

ENERGY AND MINERAL RESOURCES SUBCOMMITTEE

WATER AND POWER SUBCOMMITTEE

**“GETTING PAST GRIDLOCK: MODELS FOR
RENEWABLE ENERGY SITING AND TRANSMISSION”**



SUNZIA SOUTHWEST TRANSMISSION PROJECT

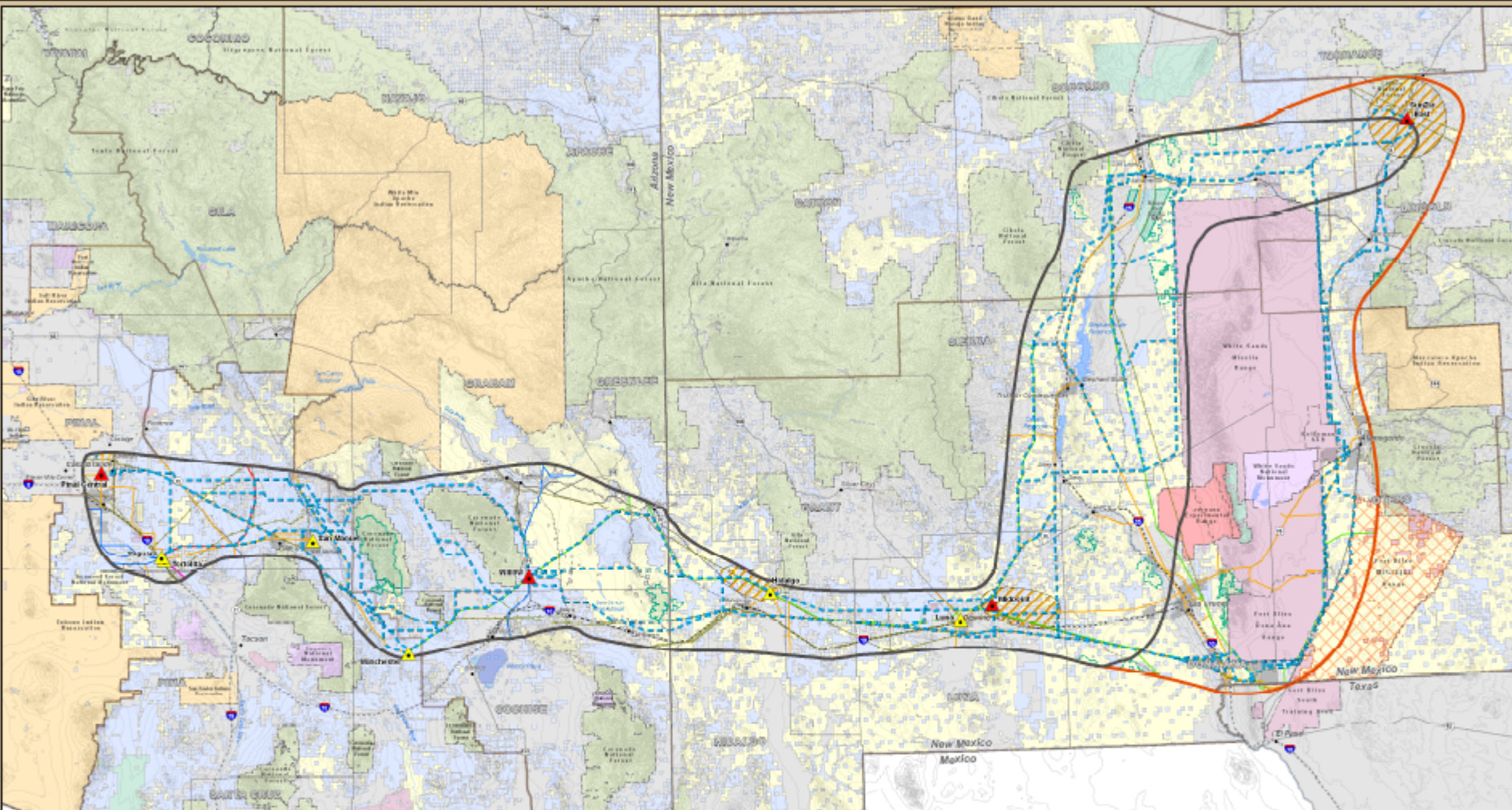


SunZia



Tom C. Wray

NOVEMBER 5, 2009



SunZia Southwest Transmission Project
Proposed and Alternative Routes
 Preliminary Scoping-October 2009



October 20, 2009



LEGEND

BLM Field Office Boundary	Federal/Other
Land Ownership	Indian Reservation
Bureau of Land Management	State/Trust Land
U.S. Dept. of Defense	Local or State Parks
McGregor Range Withdrawal	Private/Other
National Park Service	
U.S. Forest Service	
U.S. Fish and Wildlife Service	

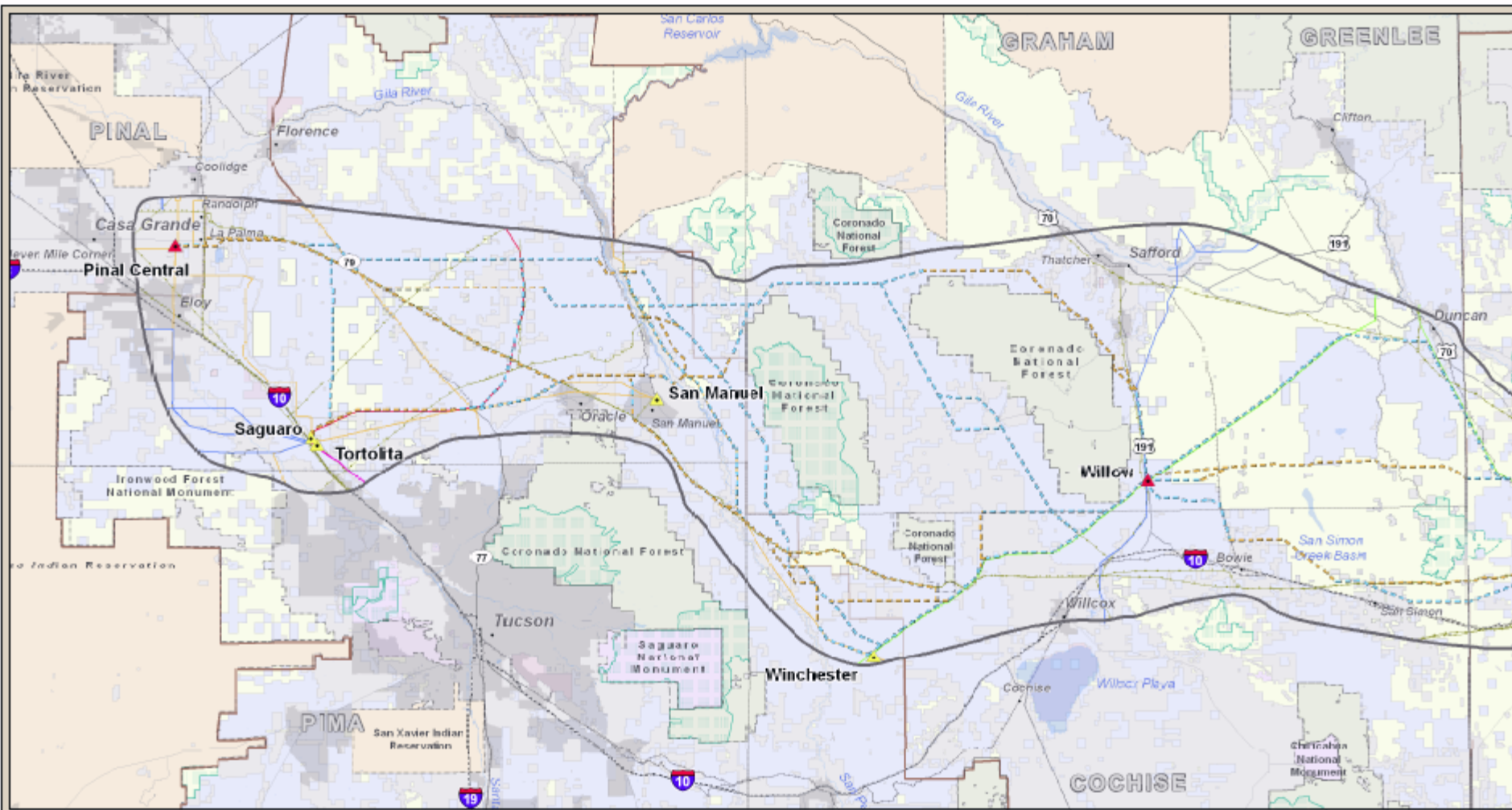
Base Features

Project Features	Utilities	Reference Features
Proposed and Alternative Routes	Proposed Substation	City
Study Area	Existing Substation	River/Stream
Proposed Study Area Expansion	Pipeline (Diameter 6")	Lake/Reservoir
Substation Siting Area	500KV Transmission Line	Urban Area
	345KV Transmission Line	State Highway
	230KV Transmission Line	US Highway
	138KV Transmission Line	Interstate
	115KV Transmission Line	Railroad

SOURCES:
 AZ BLM 2009
 AZ State Land Department and AURS 2006
 ES&S Swearing 2008, Mimbres RMP 1999
 NM BLM 2004, Socorro PRRMP 2006
 Tri-County RMP 2009
 PCN&S/Enviro. powermap@pcn&s.com
 ©2008 P&T, A Division of The McGraw-Hill Companies
 USGS, EPA, Inc. 2009



Contour Interval 200 feet



SunZia Southwest Transmission Project

Proposed and Alternative Transmission Line Routes Considered and Eliminated

September 18, 2009



LEGEND

EIM Field Office Boundary	
Land Ownership	
Bureau of Land Management	U.S. Forest Service
Military	State/Trust Land
National Park Service	Local or State Parks
U.S. Fish and Wildlife Service	Private/Other
Indian Reservation	

Base Features

Project Features	
Study Area	
Proposed and Alternative Routes: Preliminary-Gisting (May 2006)	
Routes Added or Modified	
Proposed Substation	
Substation Siting Area	
Existing Utilities	
Existing Substation	
500kV Transmission Line	
345kV Transmission Line	
230kV Transmission Line	
138kV Transmission Line	
115kV Transmission Line	
Pipeline (Diameter 6")	

Reference Features

City	State Highway	County Boundary
River/Stream	US Highway	Wilderness Area
Lake/Reservoir	Interstate	Wilderness Study Area (WSA)
Urban Area	Railroad	Jurisdictional Boundary

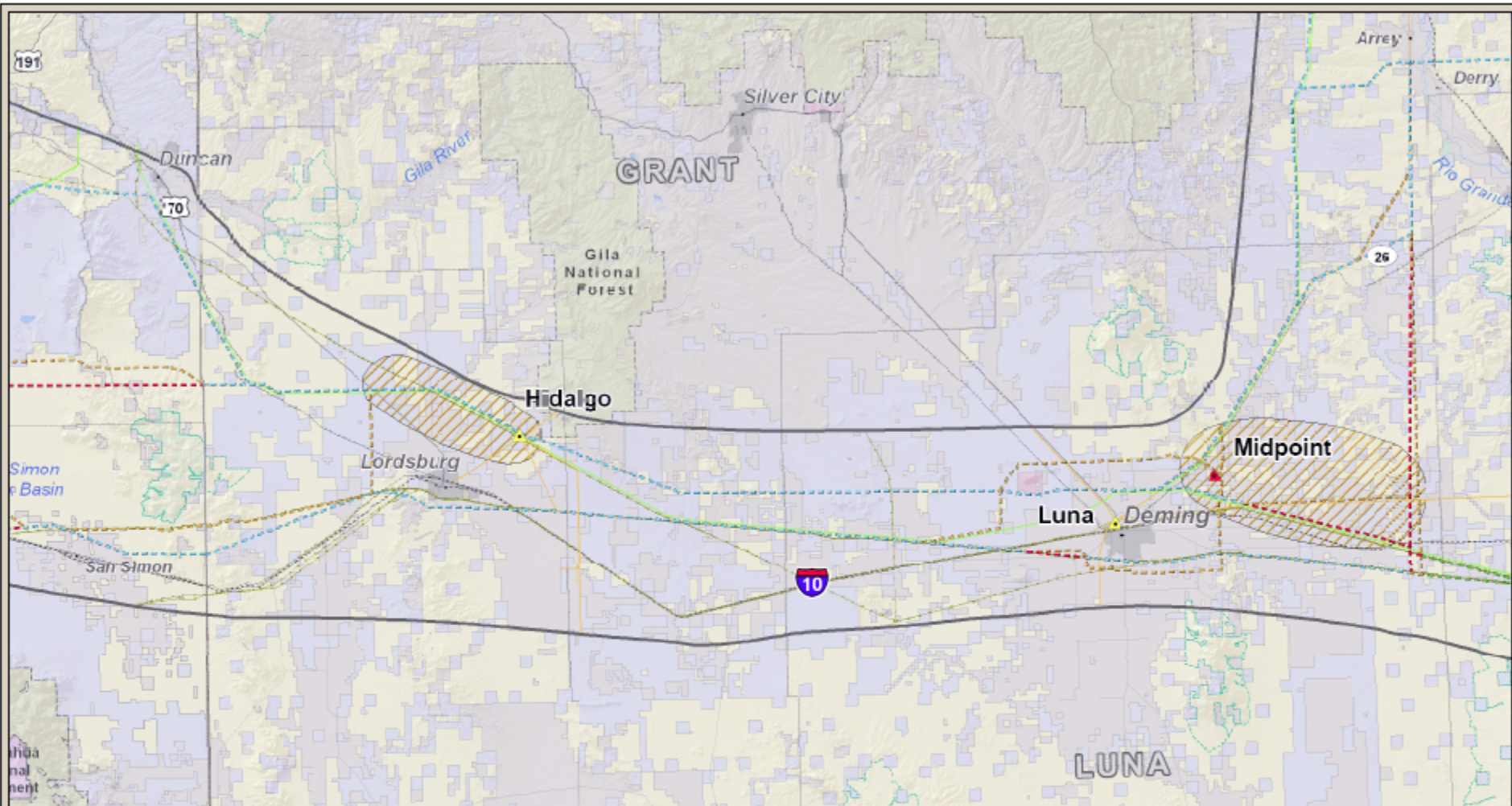
Arizona Panel



Sources:

AZ EIM 2009
 AZ State Land Department and AUSD 2008
 EIM: December 2008, Revision: April 2009
 NM EIM 2008, Sacojo PUMP 2009
 SA County RMP 2008
 FWS: Riparian, Juvenile and AFDs data
 GDDP Panel, A Division of The Microsoft Companies
 USGS, EPA, Inc. 2009





SunZia Southwest Transmission Project

Proposed and Alternative Transmission Line Routes Considered and Eliminated

September 11, 2009



LEGEND

- Project Features**
- BLM Field Office Boundary
 - Land Ownership:
 - Bureau of Land Management
 - BLM Military Withdrawal/McGregor Range (BLM/MCGR)
 - Military
 - National Park Service
 - U.S. Fish and Wildlife Service
 - Indian Reservation
 - U.S. Forest Service
 - State/Trust Land
 - Local or State Parks
 - Private/Other

Base Features

- Study Area
- Proposed and Alternative Routes: Preliminary Scoping (May 2006)
- Routes Considered and Removed
- Routes Added or Modified
- Alternative Routes Within Expanded Study Area
- Proposed Substation
- Substation Siting Area

Existing Utilities

- Existing Substation
- 500kV Transmission Line
- 345kV Transmission Line
- 230kV Transmission Line
- 138kV Transmission Line
- 115kV Transmission Line
- Pipeline (Diameter 6")

Reference Features

- City
- River/Stream
- Lake/Reservoir
- Urban Area
- State Highway
- US Highway
- Interstate
- Railroad
- County Boundary
- Wilderness Area
- Wilderness Study Area (WSA)
- Jurisdictional Boundary

Western New Mexico Panel



Sources:

- AZ BLM 2009
- AZ State Land Department and ALRS 2008
- ESRI (Copyright) 2008, ArcSWT 1999
- MI BLM 2004, Security PMSP 2009
- TA County RMP 2009
- POW/Roads, www.mta.com
- ©2008 MapX, A Division of The MicroEM Companies
- USGS, GPO, WC, 2009

