

**Report of the Select Committee on  
the Events Surrounding the 2012  
Terrorist Attack in Benghazi**  
as ordered reported on July 8, 2016  
[Classified and sensitive infor-  
mation redacted for public release.]

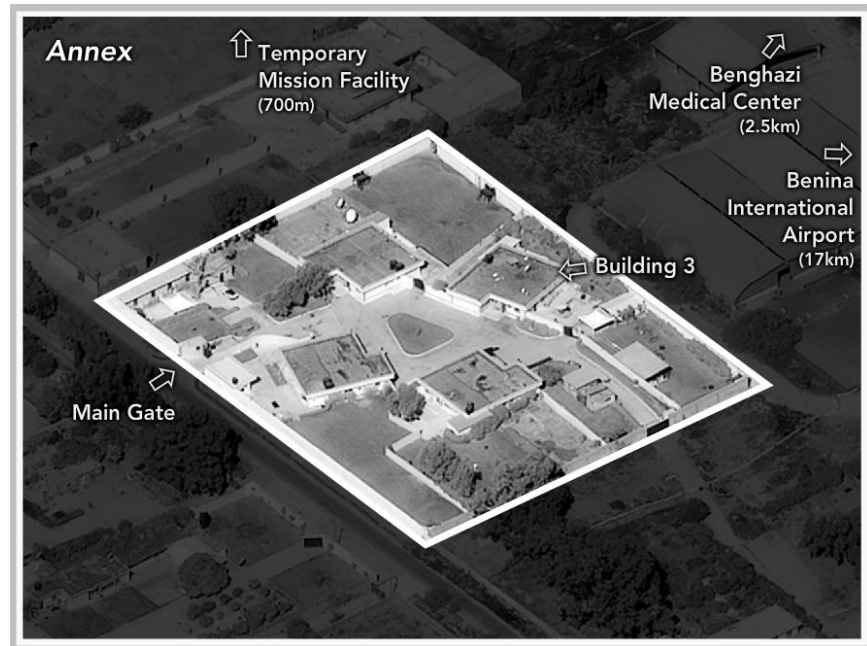
This report is dedicated to the memory and service of Glen A. Doherty,  
Sean P. Smith, J. Christopher Stevens, and Tyrone S. Woods.

## CONTENTS

Illustrations .....	iv
I. Terrorist Attacks on U.S. Facilities in Benghazi .....	I-1
II. Internal and Public Government Communications about the Terrorist Attacks in Benghazi .....	II-1
III. Events Leading to the Terrorist Attacks in Benghazi .....	III-1
IV. Compliance with Congressional Investigations.....	IV-1
V. Recommendations.....	V-1
Additional Views of Representatives Jim Jordan and Mike Pompeo .....	
Appendix A: Resolution Establishing the Select Committee on the Events Surrounding the 2012 Terrorist Attack in Benghazi .....	A-1
Appendix B: Significant Persons and Organizations.....	B-1
Appendix C: Questions for the President.....	C-1
Appendix D: Significant Events in Libya Prior to the Attacks.....	D-1
Appendix E: Security Incidents in Libya.....	E-1
Appendix F: Deterioration of Benghazi Mission Compound Security ..	F-1
Appendix G: Timelines of the Attacks .....	G-1
Appendix H: The September 12 Situation Report and the President’s Daily Brief .....	H-1
Appendix I: Witness Interview Summaries .....	I-1
Appendix J: Requests and Subpoenas for Documents.....	J-1
Appendix K: Analysis of Accountability Review Board, House Armed Services Committee and House Permanent Select Intelligence Commit- tee Reports .....	K-1
Appendix L: Glen A. Doherty, Sean P. Smith, J. Christopher Stevens, and Tyrone S. Woods.....	L-1



State Department facility in Benghazi, Libya



Central Intelligence Agency facility in Benghazi, Libya

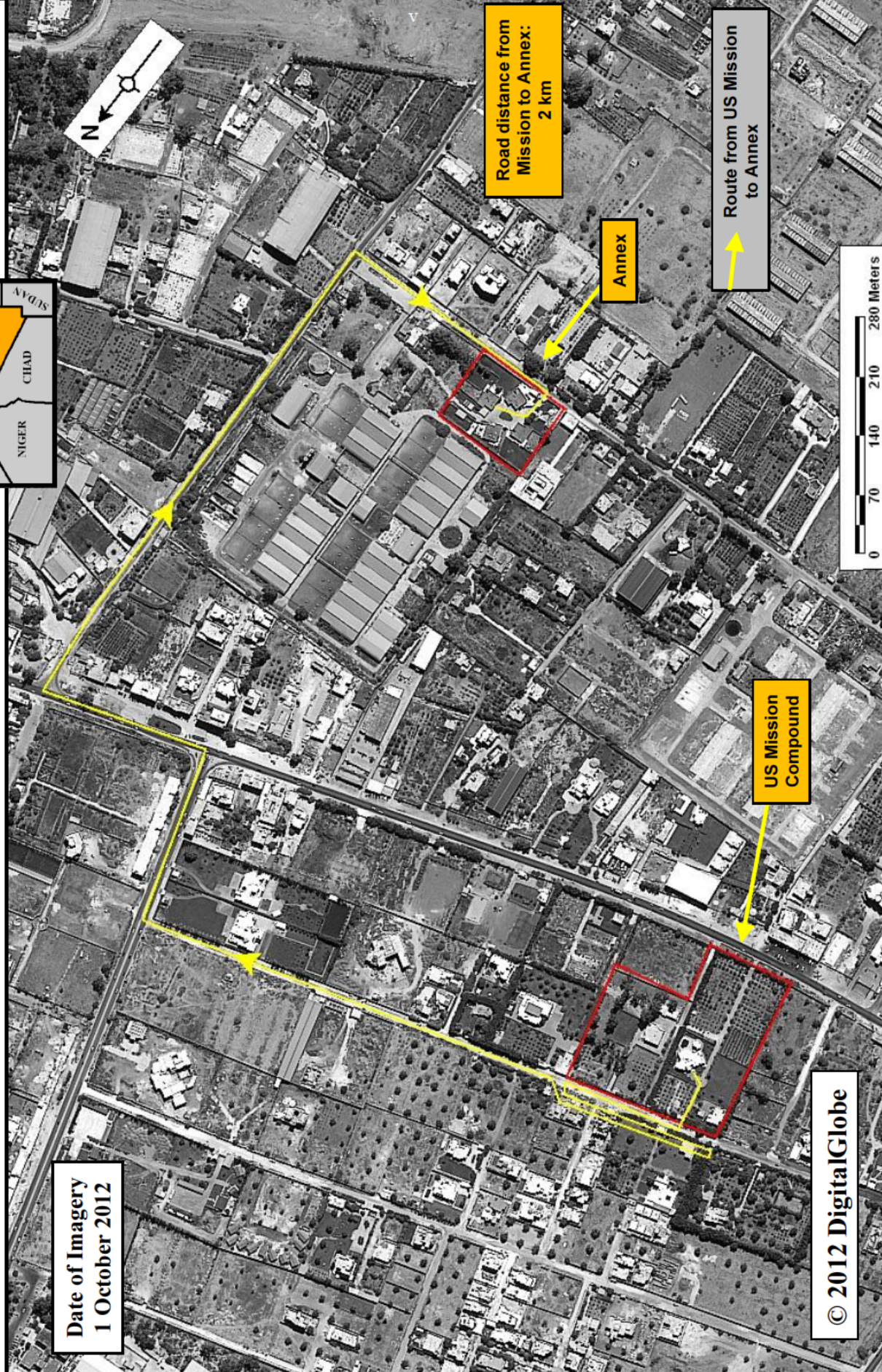


# Route from US Mission to Annex Benghazi, Libya

GEO: 32-03-40N/020-04-51E



Date of Imagery  
1 October 2012



Road distance from  
Mission to Annex:  
2 km

Annex

Route from US Mission  
to Annex

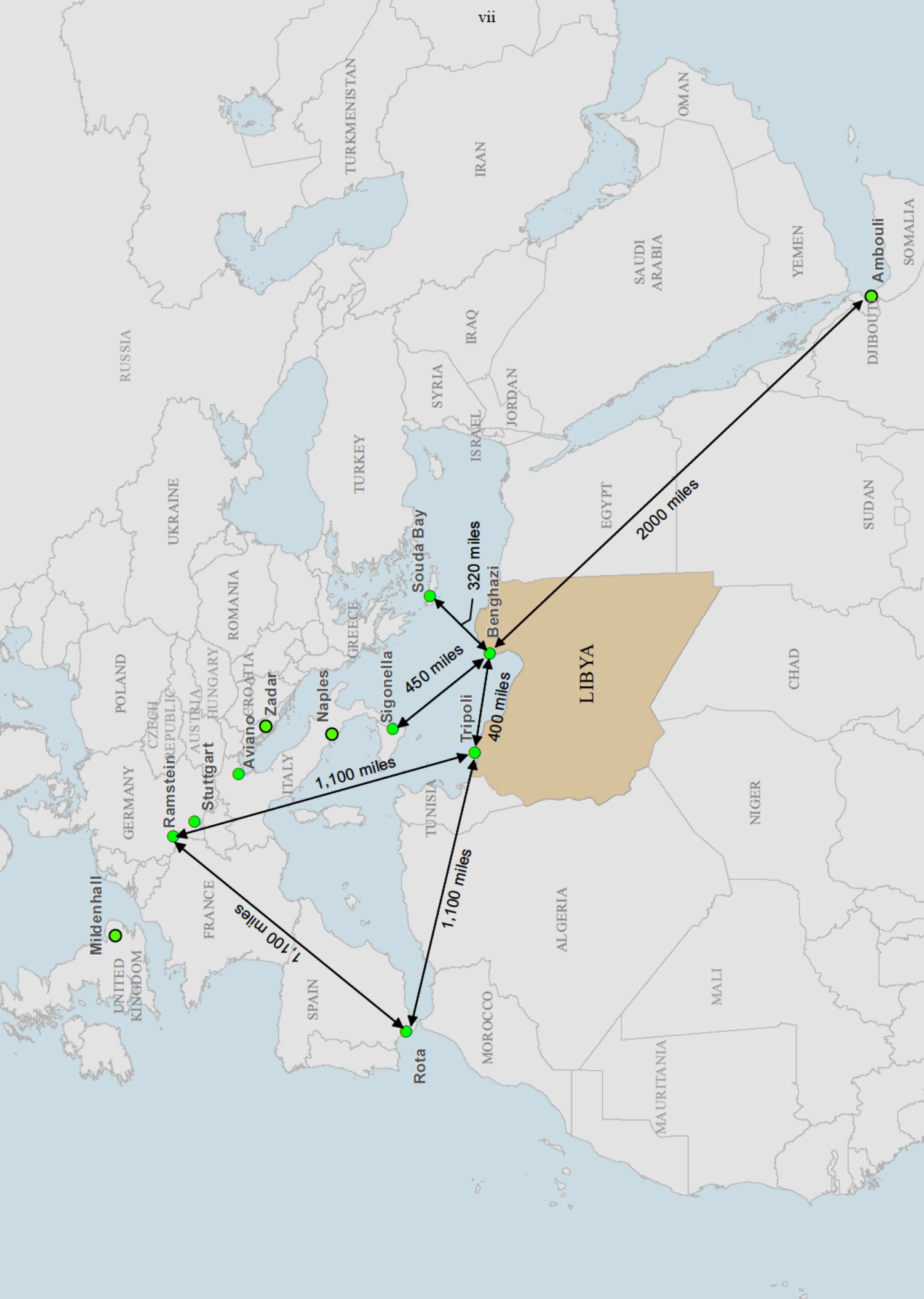
US Mission  
Compound

© 2012 DigitalGlobe









# Mediterranean Region



Note - Distances are approximate measuring the geodesic line in the software program, and do not reflect U.S. government data or estimates.  
 Source: CRS. Map borders and cities generated by Jim Uzel (adapted from Hannah Fischer) using data from Esri, 2013, and Google Maps, 2013.  
 Projection: Winkie II Date of Map: 6/17/2016