

# Our Impact

## Center for Regional Economic Innovation



Each year, the REI Center at Michigan State University sponsors research for economic innovation that will help spur job growth, business development, and help local municipalities. These projects are pitched by individuals with an array of backgrounds to a panel of educators, policymakers, and business people. After all research projects have concluded, the Leaders and Innovators from across the state gather at Michigan State University in September to listen and discuss different solutions.

“ REI is a fantastic partner helping us help Inventors and entrepreneurs in Michigan city’s and in the rural areas find pathways to succeed. There is no better group in Michigan. ”

“ REI has given us a platform to speak our message and to bring innovators together. We are now showing inventors how to turn their inventions into reality and by doing so they are creating jobs. ”

“ Our co-implementation plan for supporting youth and emerging entrepreneurs, Flint City Pop-Up, was instrumental in providing proof of concept for our new community maker space. ”

-All sources cited from partner survey

### RESEARCH FOCUSED

Our Center has supported research for about

100

projects in the State of Michigan.



### REI IGNITED

REI has directly contributed over

\$300,000

in support for innovative community and economic development projects in local communities.

### LOCALLY FOCUSED

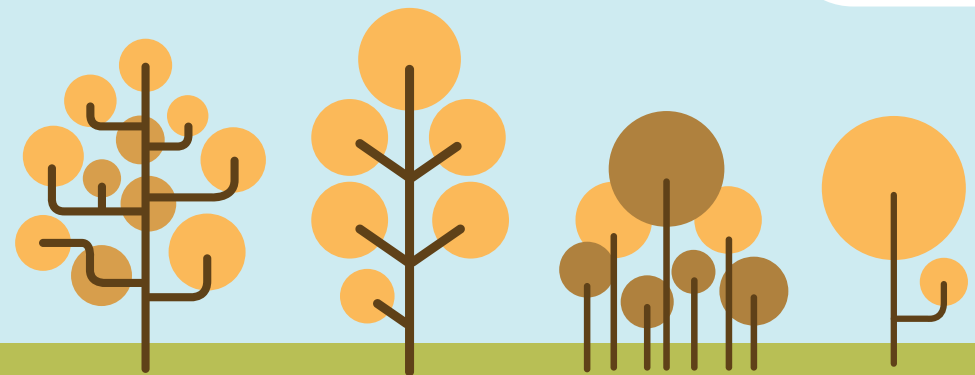
41

counties in Michigan where REI has supported research projects.

### ASTONISHING RESULTS

Impact on the Michigan Economy estimated at

\$60 Million



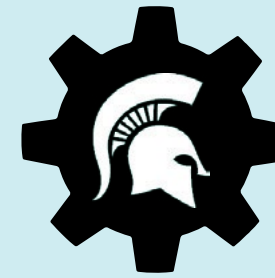
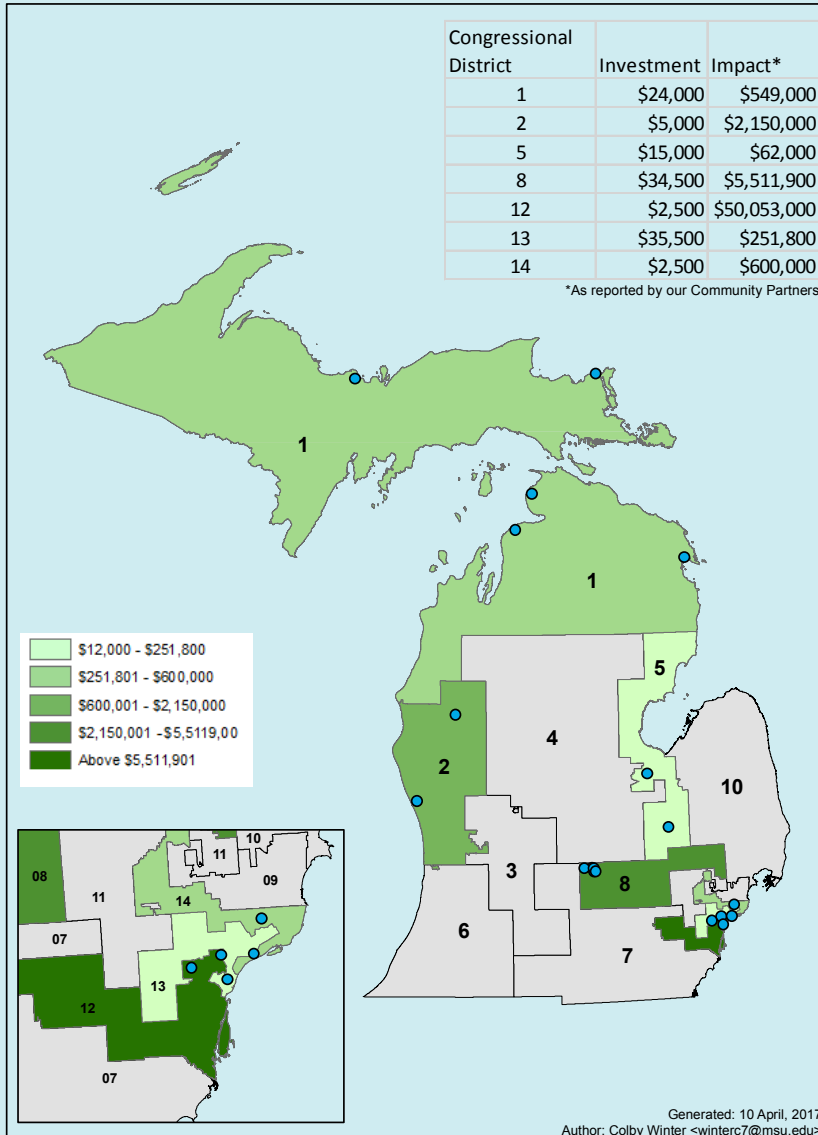
Information Source:  
<http://www.reicenter.org/>

MICHIGAN STATE  
UNIVERSITY

University Center for  
Regional Economic Innovation

# REI'S REGIONAL IMPACTS

MSU EDA UNIVERSITY CENTER 2011-2016  
RESEARCH INVESTMENT AND ECONOMIC IMPACTS



## Michigan State University EDA University Center for Regional Economic Innovation (REI)

### Our mission:

REI has been moving forward, building upon past success, stimulating innovative economic development in Michigan, for the most distressed communities of the state. REI's model provides responsive community engagement, strategic partnerships, and collaborative learning to support the creation and identification of collaborative regionally innovative tools, models, policies, and practices to improve access to capital for small businesses, increase job skill development, improve infrastructure, increase high-growth entrepreneurship, increase global competitiveness, and strengthen underserved communities and historically excluded citizens.

[reicenter.org](http://reicenter.org) | (517) 353-9555

“ 57 small businesses have accessed resources and trainings (videos) supported through the REI project. ”