

# AN AVERAGE DAY IN THE LIFE

**7** Child predators arrested




**5** REMOVAL FLIGHTS COMPLETED



**5** Suspected human traffickers arrested



more than **18** TERABYTES of forensically processed data  
EQUAL TO PLAYING 36 YEARS OF MUSIC NON-STOP



**658** ILLEGAL ALIENS REMOVED



**8** CRIMINAL CASES PROSECUTED



**216** CRIMINAL ALIEN ARRESTS



**24** VISAS REFUSED DUE TO TERRORIST CONNECTIONS OR DEROGATORY INFORMATION



**13** TRANSNATIONAL GANG MEMBERS ARRESTED




**5** DOCUMENT AND BENEFIT FRAUD ARRESTS



**10** BORDER RELATED CRIMINAL ARRESTS




**4,125** Pounds of narcotics seized



**236** DETAINERS LODGED



**2,887** IMMIGRATION HEARINGS



U.S. DEPARTMENT OF HOMELAND SECURITY  
**ICE**



\*These averages are based on 12 months of activity during FY 2016.



# AN AVERAGE DAY IN THE LIFE

\*



## ENFORCEMENT AND REMOVAL OPERATIONS

658



ILLEGAL ALIENS REMOVED



34,376

ILLEGAL ALIENS HOUSED IN DETENTION FACILITIES NATIONWIDE

MONITOR MORE THAN

46,777



ALIENS ENROLLED IN ALTERNATIVES TO DETENTION

236



DETAIERS LODGED



564

INTAKE MEDICAL SCREENINGS PERFORMED



ICE

967

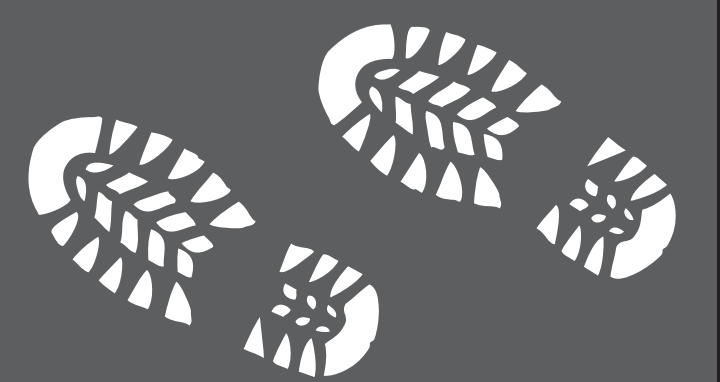
ALIENS PROCESSED INTO DETENTION CENTERS



TRACK MORE THAN

2,200,000

ALIENS IN IMMIGRATION REMOVAL PROCEEDINGS



293

PHYSICAL EXAMS PERFORMED



216

CRIMINAL ALIEN ARRESTS



\*These averages are based on 12 months of activity during FY 2016.

AN AVERAGE DAY IN THE LIFE



HOMELAND SECURITY INVESTIGATIONS



7 Child predators arrested

5



DOCUMENT AND BENEFIT FRAUD ARRESTS

4,125

Pounds of narcotics seized



24

VISAS REFUSED DUE TO TERRORIST CONNECTIONS OR DEROGATORY INFORMATION



more than

18

TERABYTES of forensically processed data



EQUAL TO PLAYING 36 YEARS OF MUSIC NON-STOP

4

CONVICTIONS FOR HUMAN SMUGGLING



\$1,295,890

SEIZED IN CURRENCY AND MONETARY INSTRUMENTS



13



TRANSNATIONAL GANG MEMBERS ARRESTED

10



BORDER RELATED CRIMINAL ARRESTS

8



Weapons seized

\$2,500,000



Intellectual Property Seizures



ICE

\*These averages are based on 12 months of activity during FY 2016.