

*Treasury's North Lawn and
Pennsylvania Avenue at the White House*



Pennsylvania Avenue

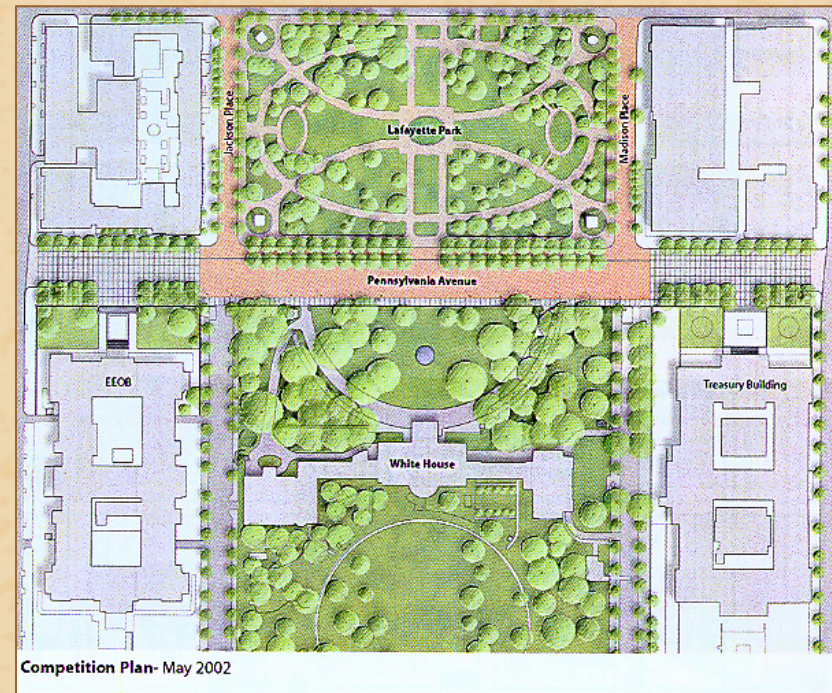
- Major redevelopment of Pennsylvania Avenue from Treasury to EEOB
- Project construction starts Nov. 2003
- Project construction ends Oct. 2004



17th Street Threshold Looking East

Pennsylvania Avenue Plan

- Streetscape and landscape redesign
- New granite and textured paving surfaces
- Trees repositioned along the Avenue
- Modified security bollards and redesigned officer booths



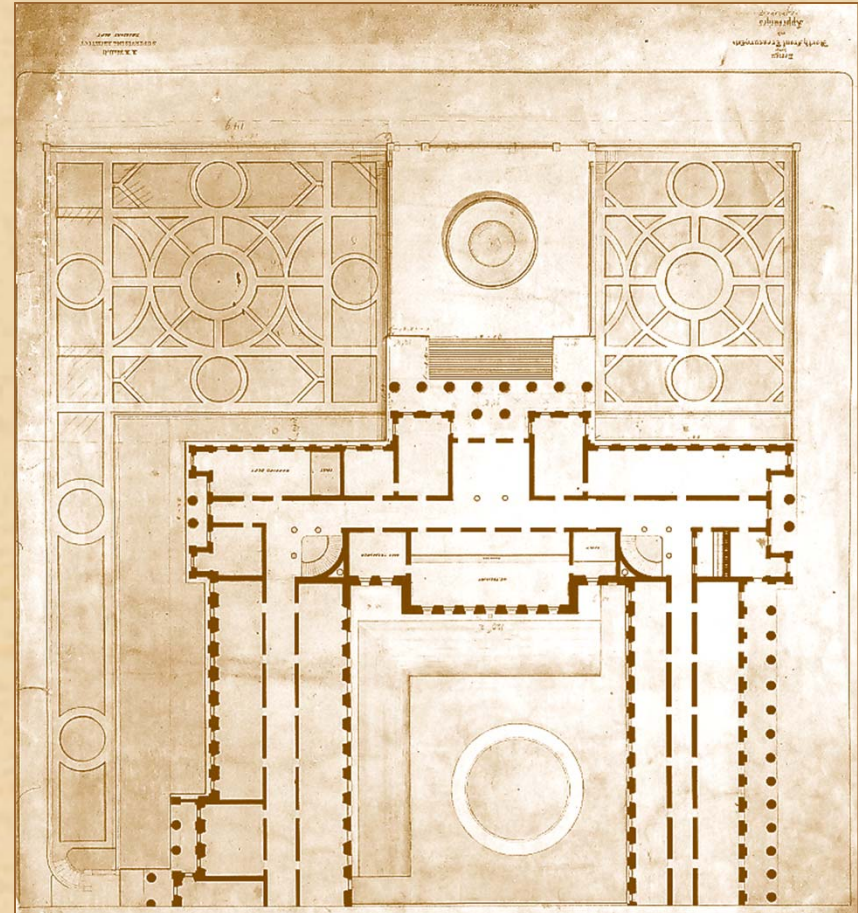
Landscape Plan 1861

- The plan was designed by A.J. Downing in 1851
- Treasury adopted the plan with the completion of the South Wing
- There were formal landscape elements on all sides of the Treasury



Landscape Plan 1867

- Alfred Mullett, Supervising Architect, reworked the North lawn plan
- Fountain erected in North plaza
- Symmetrical circular patterns became the key design motif



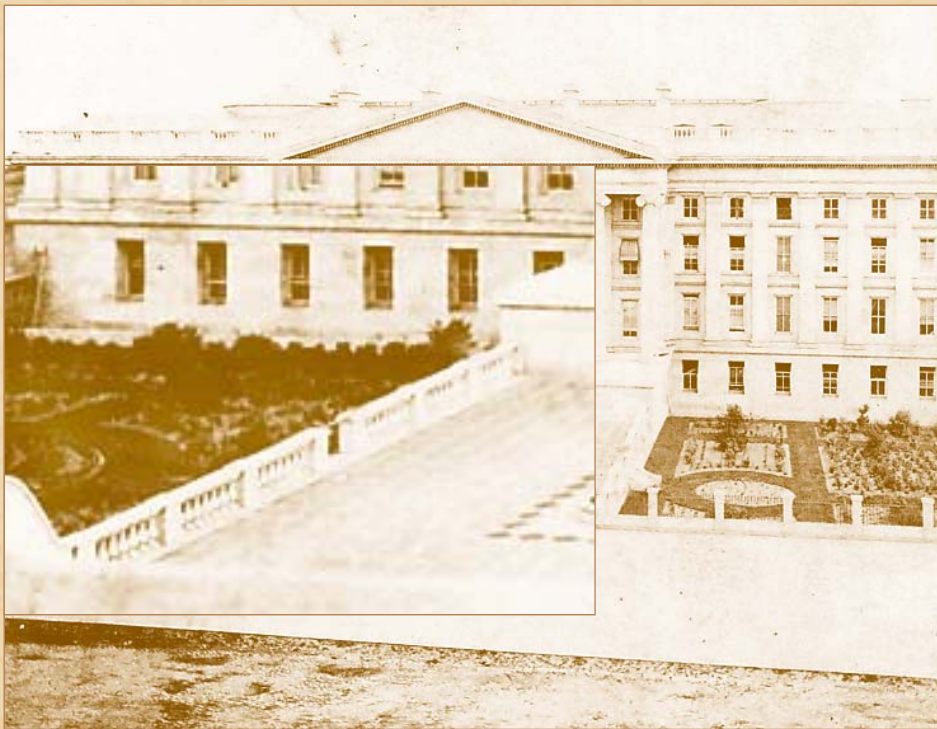
North Lawn 1890

- Period photograph, looking east, shows a well attended lawn with a circular design element



North Lawn 1919

The Downing plan continued after World War I (at that time there was a fountain in the center of the north plaza).

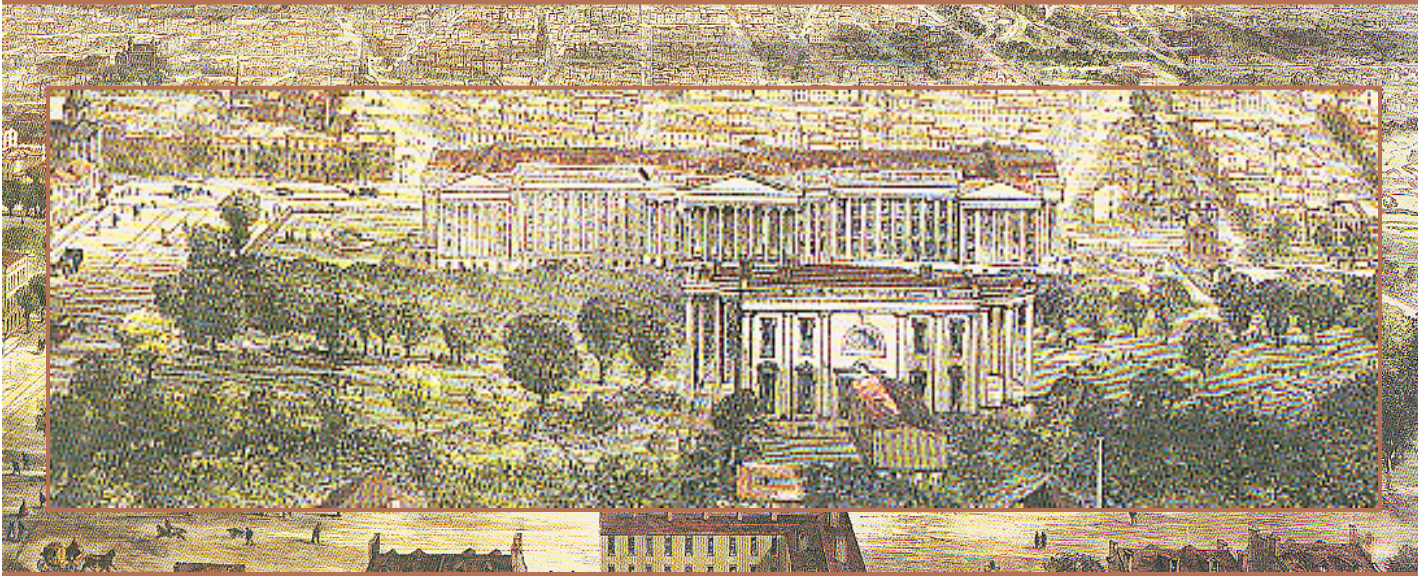


Current North Lawn

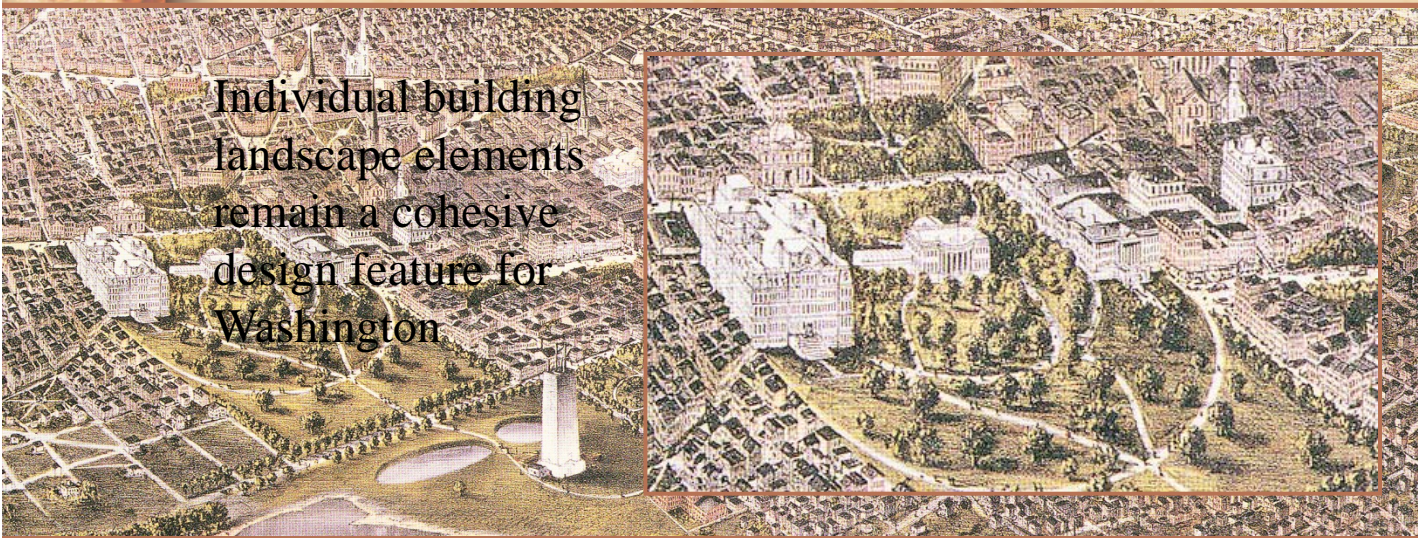
- The northeast lawn has been filled in with the completion of waterproofing project
- The northwest lawn has plants along the perimeter, which cannot be seen from the Pennsylvania Avenue street level.



North Lawn Improvements



1869

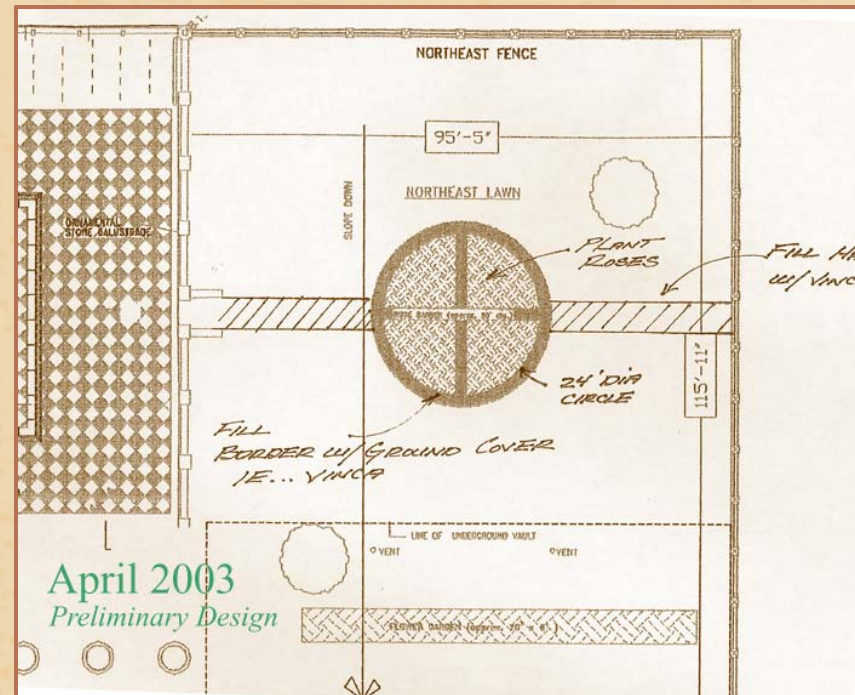


1880

Individual building
landscape elements
remain a cohesive
design feature for
Washington.



North Lawn Initial Replanting



- Proposed plan returns the circle as the focal design element.
- A central circular bed replaces the perimeter flower beds.
- The circular beds will be a “seed” for future landscape enhancements for both the North and South lawns