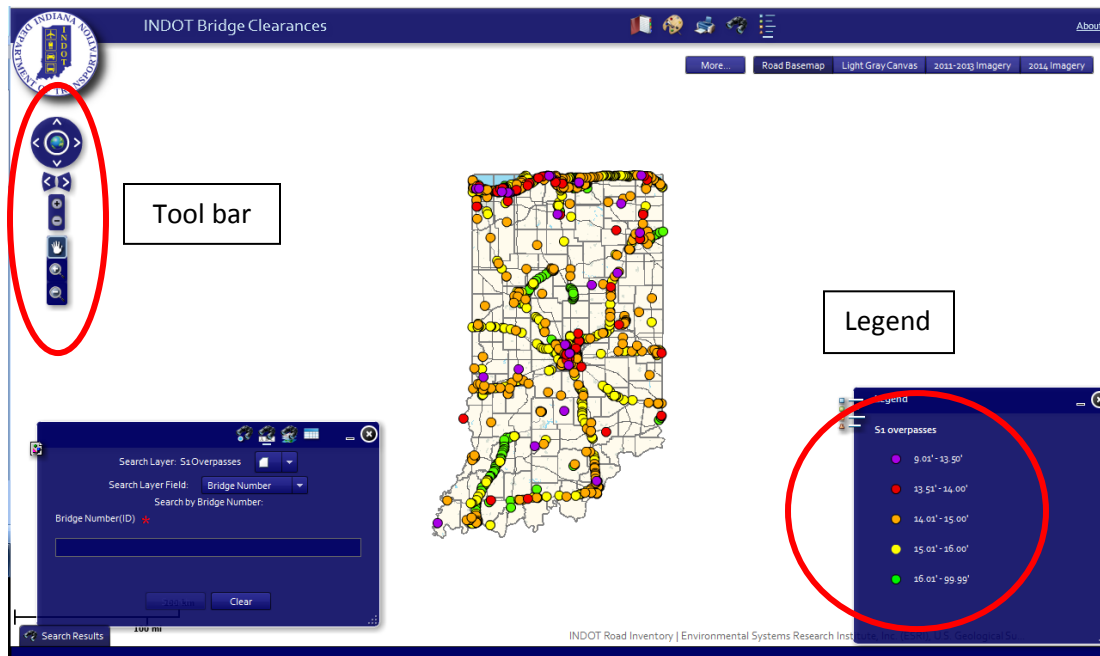


Instructions for using INDOT's [Bridge Clearance Map](#)

Click the link to open the Bridge Clearance Map, then read the WARNING and MAP INFORMATION and click on "Click to Continue" at the bottom. A map will come up with Indiana in the center, with dots of various colors representing the bridges on interstates, U.S. highways, and state routes. The functionality of the map is very similar to Google Maps: use the tool bar on the left to zoom in and out, and use the arrows or click and drag the map to change the viewable area. Dot colors correspond to the clearance range the bridge falls within; the legend is on the lower right side of the screen.



→ To change the viewable area of the map, use the arrows at the top of the tool bar (or click on the hand button, below).

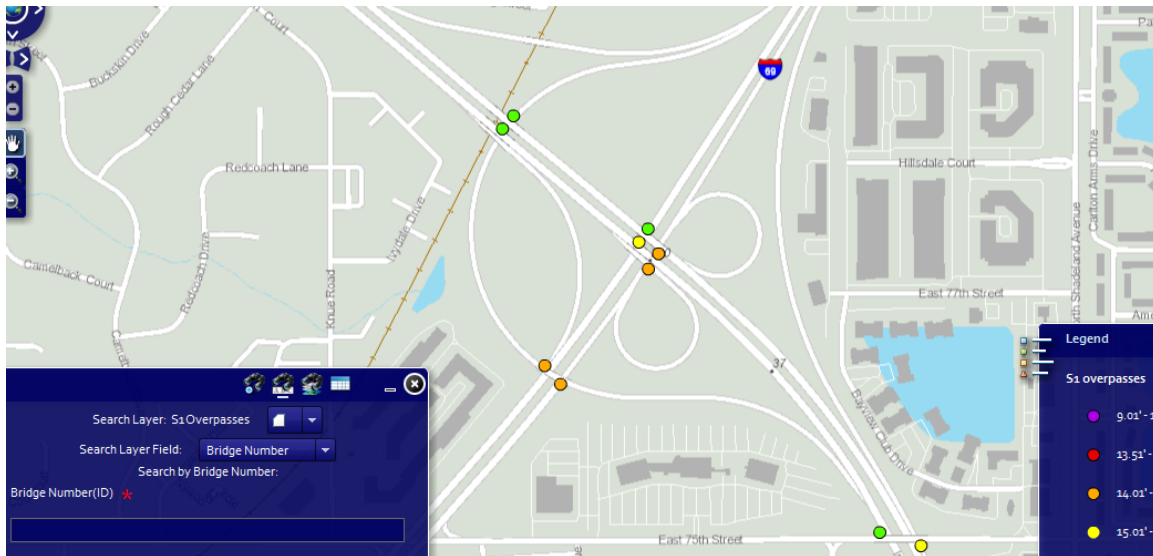
→ These arrows let you switch between your current and previous views.

→ Use these buttons to zoom in and out on the map.

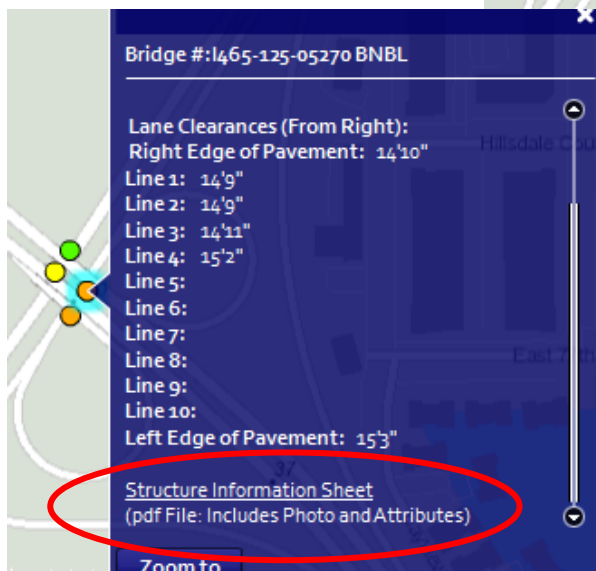
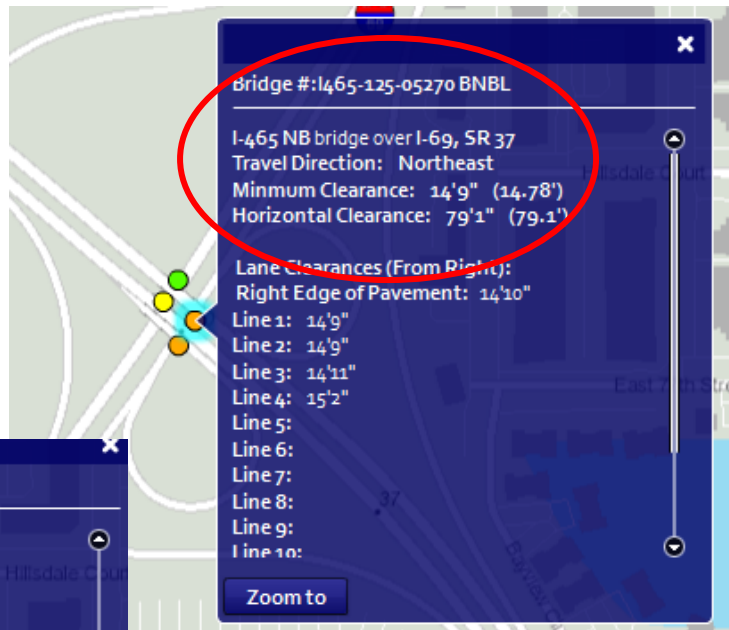
→ Click on the hand button to click on and drag the map to change the viewable area.

NOTE: This bridge clearance map only covers interstates, U.S. highways and state routes. If your route includes any city streets or county roads, you must obtain approval from the municipality before you can travel the route. Questions? Email INBridgeshelp@indot.in.gov.

1. Zoom in to find the beginning of your planned route and the relevant bridges. Zoom in far enough to be able to see the individual dot representing each bridge.



2. Click on the bridge's dot to open a blue pop-up window that includes location information, direction of travel and the minimum clearance for those travel lanes. NOTE: Bridge clearances differ depending on direction of travel; please be sure to check the information corresponding to your direction of travel.



At the bottom of the pop-up window is a link to the Structure Information Sheet for that bridge; clicking this link will open a PDF file with more detailed information about the bridge and clearances.

3. If there are additional bridges at the intersection (multiple dots may be on top of each other), this is indicated at the top of the pop-up window with scroll arrows and a notation showing the number of records. Use the arrows to access the information on each bridge.
4. Close the pop-up window by clicking the X in the top right corner.
5. Repeat this process for all bridges on your planned route.

