

Proposed Solution

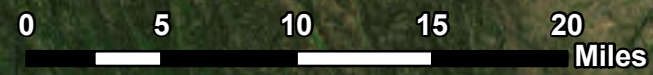
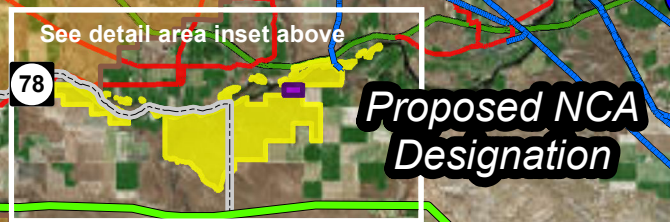
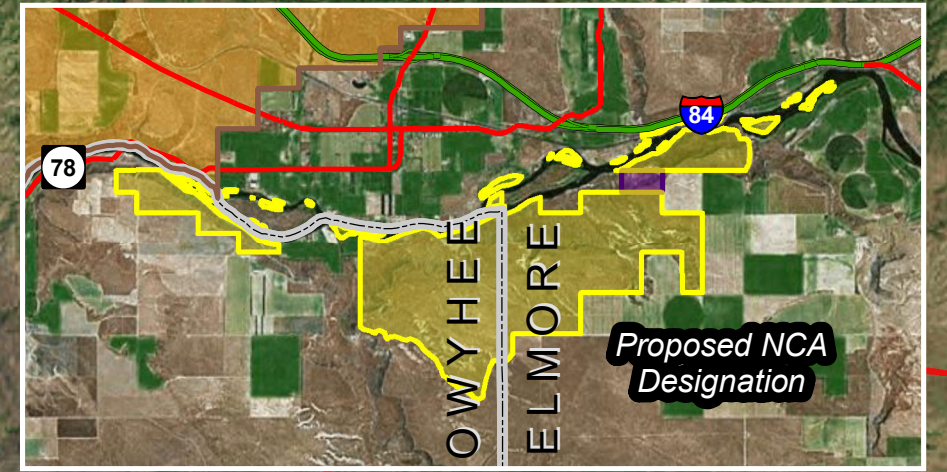
Hemingway Substation

Segment 8 Revised Proposed Route - Alternative 1

Morley Nelson Snake River Birds of Prey National Conservation Area

Segment 9 Revised Proposed Route - Alternative 1

Note: Revised Proposed Route, Alternative 1, Segments 8 & 9 follow existing transmission line corridors through NCA.



November 10, 2016

Revised Proposed Routes - Alternative 1		Transmission Lines	
	Segment 8		Existing
	Segment 9	Highways	
Proposed NCA Designation Areas			Interstate
	BLM Administered (4,694 acres)		US / State
	BOR Administered (86 acres)		



Service Layer Credits: Sources: Esri, HERE, DeLorme, USGS, Intermap, INCREMENT P, NRCan, Esri Japan, METI, Esri China (Hong Kong), Esri Korea, Esri (Thailand), MapmyIndia, NGCC, © OpenStreetMap contributors, and the GIS User Community
 Source: Esri, DigitalGlobe, GeoEye, Earthstar Geographics, CNES/Airbus DS, USDA, USGS, AEX, Getmapping, Aerogrid, IGN, IGP, swisstopo, and the GIS User Community