

SECRETARY OF STATE
STATE OF INDIANA
200 W. WASHINGTON STREET, INDIANAPOLIS, IN 46204
WWW.SOS.IN.GOV

ORDER CONSOLIDATING AND ESTABLISHING PRECINCTS

Whereas, Indiana Code 3-6-5.2-10 (as amended by HEA 1383-2018, SECTION 1) provides that in the event that no later than July 1, 2018 the Indiana Election Commission has not adopted an order for consolidation of precincts in Lake County having fewer than six hundred active voters as of November 1, 2017, the Secretary of State shall issue an order not later than August 1, 2018, to consolidate precincts consistent with the standards provided therein;

Whereas, Ind. Code 3-6-5.2-10 (a) directs the Secretary of State to make certain determinations and to issue an order for consolidation of precincts;

Whereas, Ind. Code 3-6-5.2-10 (a) directs the Secretary of State to make the following determinations:

- (1) Which precincts within the county had fewer than six hundred (600) active voters (as defined in Ind. Code 3-11-18.1-2) as of November 1 of the preceding year.
- (2) Whether compliance with the precinct boundary standards set forth in Ind. Code 3-11-1.5-4 or Ind. Code 3-11-1.5-5 would prevent the combination of a precinct described in subdivision (1) with one (1) or more adjoining precincts.
- (3) The potential savings in the administration of elections resulting from the combination of precincts under this section;

Whereas, Ind. Code 3-6-5.2-10 (b) also directs that the order for consolidations of precincts issued by the Secretary of State do the following:

- (1) Realize savings for the county.
- (2) Not impose unreasonable obstacles on the ability of the voters of the county to vote at the polls; and

Whereas, the Secretary of State is required under Ind. Code 3-6-5.2-10 (b) to issue an order for consolidation of precincts and file the order with the Lake County Board of Elections and Registration and the Indiana Election Division;

NOW THEREFORE, as the duly elected and acting Secretary of State of Indiana, I make the following findings and issue this Order:

SECRETARY OF STATE
STATE OF INDIANA
200 W. WASHINGTON STREET, INDIANAPOLIS, IN 46204
WWW.SOS.IN.GOV

FINDINGS

FINDING 1. As of July 1, 2018, the Indiana Election Commission had not adopted an order to comply with Ind. Code 3-6-5.2-10.

FINDING 2. 170 precincts in Lake County have fewer than six hundred active voters as of November 1, 2017 and are eligible for consolidation based on the findings incorporated in **Exhibit 1**. The 170 precincts are listed in **Exhibit 1**.

FINDING 3. The precinct boundary standards set forth in Ind. Code 3-11-1.5-4 and Ind. Code 3-11-1.5-5 do not prevent the consolidation of precincts listed in **Exhibit 1** with one or more adjoining precincts.

FINDING 4. Consolidating precincts listed in **Exhibit 1** will result in potential savings of \$117,300.00 per year and \$703,800.00 over a four year election cycle, as detailed in **Attachment D**.

FINDING 5. Consolidating precincts listed in **Exhibit 1** will not impose unreasonable obstacles on the ability of the voters of Lake County to vote at the polls.

IT IS THEREFORE ORDERED:

SECTION 1. The precincts listed in **Exhibit 1** are consolidated effective January 1, 2019 in the manner set forth in this exhibit.

SECTION 2. The following documents, attachments, information and data are incorporated by reference into this Order:

Exhibit 1

The suggested precinct consolidation plan filed with the Secretary of State on July 5, 2018.

The Lake County Precinct Consolidation Explanation and Findings Summary, which includes the following Attachments:

Attachment A	Consolidated Precinct Counts by Municipality
Attachment B	Demographic Study Post-Consolidation
Attachment C	Demographic Study Pre-Consolidation
Attachment D	Lake County Precinct Consolidation Cost Savings Validation
Attachment E	Omitted Precincts Under 600 Active Voters
Attachment F	Voting Location Travel Distance Study

SECRETARY OF STATE

STATE OF INDIANA

200 W. WASHINGTON STREET, INDIANAPOLIS, IN 46204
WWW.SOS.IN.GOV

Attachment G	Population Change Summary
Attachment H	Report Discrepancy Log
Attachment I	Top 5 Longest Distance Polling Location Changes with Satellite View
Attachment J	Voter Representation Proportion Analysis
Attachment K	Lake County Precinct Shape File

SECTION 3. This Order shall be construed in accordance with the following rules:

1. The definitions set forth in Ind. Code 1-1-4 and 3-5-2 apply throughout this Order, unless otherwise expressly provided.
2. This Order must be construed, if possible, to comply with Indiana law and federal law (specifically Ind. Code 3-6-5.2-10). If any part of this Order violates or an application of this Order violates Indiana law or federal law, the invalidity does not affect the other provisions or applications of this Order that can be given effect without the invalid provision or application. The provisions of the Order are severable.
3. If a conflict exists between a map showing the boundaries of an existing or consolidated precinct and a description of the existing or consolidated precinct as set forth in this Order, the boundaries of the precinct are the boundaries set forth in the text of the Order, not the boundaries shown on the map, to the extent that there is a conflict between the text and the map.
4. If any scrivener's error, mathematical error, or omission of information is found in this Order, the Order must be construed whenever possible to correct the error or omission.
5. This Order is a final agency action as defined under Ind. Code 4-21.5-1-6.

SECTION 4. The Lake County Board of Elections and Registration and the Indiana Election Division shall take all actions necessary to implement the consolidation required under this Order and in accordance with Ind. Code 3-6-5.2-10.

/s/ Connie Lawson
Connie Lawson
Indiana Secretary of State

Date: 8-1-18

SECRETARY OF STATE
STATE OF INDIANA
200 W. WASHINGTON STREET, INDIANAPOLIS, IN 46204
WWW.SOS.IN.GOV

Lake County Precinct Consolidation Explanation and Findings Summary

Effective July 1, 2018, and as a requirement issued by P.L.210-2018 (HEA 1383-2018), as codified in IC 3-6-5.2-10, the Indiana Secretary of State shall, not later than August 1, 2018, determine the following for counties having a population of more than four hundred thousand (400,000), but less than seven hundred thousand (700,000) (Ind. Code 3-6-5.2-1):

- (1) Which precincts within the county had fewer than six hundred (600) active voters (as defined in IC 3-11-18.1-2) as of November 1, 2017;
- (2) Whether compliance with the precinct boundary standards set forth in IC 3-11-1.5-4 or IC 3-11-1.5-5 would prevent the combination of a precinct described in subdivision (1) with one or more adjoining precincts; and
- (3) The potential savings in the administration of elections resulting from the combination of precincts under this section.

Furthermore, the Indiana Secretary of State shall issue an order to consolidate precincts within the county that is consistent with these standards and shall file the order with the Lake County Board of Elections and Registration and the Indiana Election Division. Consistent with the requirements of statute, the order must do the following:

- (1) Realize savings for the county; and
- (2) Not impose unreasonable obstacles on the ability of the voters of the county to vote at the polls.

The General Assembly has worked over the course of multiple sessions to craft a precinct consolidation solution with both Lake County major political parties. While those discussions resulted in establishing the 600 active voter threshold, ultimately, consolidation agreements between both parties were unsuccessful. Seeing no prospects for changing this path and reaching the end goal of consolidation, which both county political parties and municipal leadership have supported, the legislature sought to advance these discussions to a successful resolution. As a result, and in the event the county party leadership were unable to submit a negotiated plan to the Indiana Election Commission (Commission) by the June 30, 2018 deadline. In the event of a Commission impasse, the legislature saw fit to assign the ultimate responsibility for precinct consolidation to the Indiana Secretary of State.

On June 22, 2018, Lake County Republicans submitted their suggested precinct consolidation plan (hereinafter referred to as the “suggested Lake County precinct consolidation plan” or “suggested plan”). The research of Lake County Republicans was substantial and included over 700 pages of materials. We commend them for providing extremely detailed and helpful information.

SECRETARY OF STATE

STATE OF INDIANA

200 W. WASHINGTON STREET, INDIANAPOLIS, IN 46204

WWW.SOS.IN.GOV

Once these responsibilities were imposed on the Indiana Secretary of State on July 1, 2018, the Secretary issued a call for public comments, recommendations and plans. The Secretary issued a due date of July 13, 2018 for these comments. The 25 public comments received included support and objections to the legislative mandate, as well as comments regarding public transit recommendations. At least one request was made for an extension of time, which was not feasible in light of the limited time for the Secretary to complete research and issue the plan.

During and after the public comment period, at the request of municipal, Republican and Democrat county leadership, the Secretary or her staff hosted several calls and meetings. The result of those meetings included general comments on what those particular stakeholders would like to see in the consolidation. Some of those comments included demographic considerations and explanations as to why plans were not submitted since the inception of the legislative mandate.

Upon receiving the plan, the Secretary commissioned work by 39 Degrees North and Baker Tilly, the Secretary's election project management firm, with nearly two decades of experience in working with the office. 39 Degrees North is the Secretary's GIS partner and the provider for Who Are Your Elected Officials, a service unique throughout the United States. The work of the partners was substantial and extremely valuable.

39 Degrees North was tasked with investigating, correcting and or validating all GIS components of the suggested Lake County precinct consolidation plan. Baker Tilly was tasked with performing analysis for all non-GIS components. There were tens of thousands of qualitative and quantitative data points. In addition, the partners began by scanning and digitizing all 700 pages of the suggested plan. Each partner investigated, corrected and validated the metrics used in the suggested plan.

The following narrative is designed to assist in understanding this process and the rationale in crafting the order under the requirements of IC 3-6-5.2-10.

Report Validation:

The suggested Lake County precinct consolidation plan included a Cover Letter, Table of Contents, Narrative, Graphic 1, Graphic 2, Consolidation Report, Exhibit A, Exhibit B, and Exhibit C. Additionally, the authors of the suggested plan provided updated Payroll 2016 documentation since some pages were scanned together. These documents were reviewed and extracted into an inventory tracker to identify quantitative and qualitative information and logged for further validation. The data from all documents was manually recreated and compared to identify any data gaps and logged for further validation.

The suggested Lake County precinct consolidation plan calculated the average of 2016 active voters, per precinct. The averages of the 2016 active voter data source by city and town, identified in Graphics 1 and 2, originated from a source different than Exhibit A, since the averages from both documents do not substantially match, but some minor discrepancies were noted. This could represent a difference between data due to voter status changes resulting from the 2016 General Election and statewide voter list maintenance.

SECRETARY OF STATE

STATE OF INDIANA

200 W. WASHINGTON STREET, INDIANAPOLIS, IN 46204
WWW.SOS.IN.GOV

The suggested Lake County precinct consolidation plan proposes to combine some of the 523 existing precincts. 241 precincts were not included in the suggested plan. The authors of the suggested plan explained that all precincts with 600 or more active voters had been omitted. Of the 241 precincts not included in the suggested plan, 62 precincts were found to have less than 600 active voters, thereby making them eligible for potential consolidation. However, in light of the limited information and time available to consider further consolidation of these precincts, the Order is limited to those consolidations with documentation included in the suggested plan. A "consolidation" may consolidate two or more existing precincts into a single consolidated precinct. Under the suggested plan and according to the available data, the current precincts would be consolidated into 170 precincts.

Cost Savings (See Attachment D):

Attachment D includes payroll and rent and was manually recreated. The amount of \$690 was used by the authors of the suggested plan as the average cost of payroll and rent for all precincts and was obtained and validated from Exhibit B of the suggested plan.

The formula used to validate the potential savings for one and four years is as follows:

- Step 1: Multiply \$690 by number of current precincts
- Step 2: Multiply \$690 by the number of consolidated precincts
- Step 3: Subtract the product of Step 1 from the product of Step 2
- Result: Total cost savings per election year;

Therefore, the total cost savings per year and multiply by six elections (conducted over four years). This equals the total cost savings over four years.

The suggested plan realizes a potential savings of \$117,300.00 per year and \$703,800 for the four year cycle, since there are six elections. It should be noted the savings would be greater depending on the number of precincts involved in special elections over the course of the next four years.

Voting Location Travel Distance Study (See Attachment F and I):

Indiana Code 3-6-5.2-10 Section (b)(2) provides that the consolidation not impose unreasonable obstacles on the ability of the voters of the county to vote at the polls. The 170 precinct consolidations were analyzed to determine the amount of precincts that have a voting location change by comparing the voting location listed on each IEC-8 of the suggested plan, as summarized in Exhibit C, with the list of 2018 voting locations available to the public on the Lake County [website](#). 94 precinct consolidations were identified to have a potential voting location change and 76 precinct consolidations (44%) would not have a potential voting location change. Out of the 94 precinct consolidations that were identified to have a potential voting location change, there are 114 potential voting location changes because some precincts have more than one consolidation.

SECRETARY OF STATE

STATE OF INDIANA

200 W. WASHINGTON STREET, INDIANAPOLIS, IN 46204

WWW.SOS.IN.GOV

The weighted mean center population points were provided by 39 Degrees North for all precinct consolidation voting locations with a voting location change referenced in the suggested plan. The weighted mean center points were derived from census block information. Baker Tilly calculated the distance between the weighted mean center points and the voting location distances using Google Maps:

- The distance from the weighted mean center population point to the new voting location;
- The distance from the weighted mean center population point to the second consolidated voting location;
- The distance from the weighted mean center population point to the third consolidated voting location (if applicable);
- The distance between the potential future voting location and the second consolidated voting location; and
- The distance between the potential future voting location and the third consolidated voting location (if applicable).

The average distance from any prior voting location to the new voting location across all precinct consolidations in the suggested plan is 1.002 miles. The minimum and maximum distance between each precinct consolidation's prior voting location to the new voting location both decrease, on average, across all location changes.

With two exceptions, the new voting location moves closer to the weighted mean center population point when compared with the weighted mean center population point and the previous voting location for all of the precinct consolidations in the suggested plan. The two precinct consolidation exceptions are as follows:

- SJT-08: 3 miles is the difference from the prior voting location to the new voting location for the SJT-06 consolidated precinct. The new voting location is 0.3 miles farther from the weighted mean center distance to the SJT-06 consolidated voting location and has moved to other side of the weighted mean center population point. The weighted mean center point is now central in relation to the prior voting location and the new voting location.
- HO-22: 3.6 miles is the difference from the prior voting location to the new voting location for the HO-17 consolidated precinct. The new voting location is 0.8 miles farther from the weighted mean center than the HO-17 consolidated voting location and has moved to the other side of the weighted mean center population point. The weighted mean center point is now central in relation to the prior voting location and the new voting location. The new voting location is on the other side of park property, including Gordon & Faith Greiner Nature Preserve, Bur Oak Woods, Robinson Park, Hobart Woodland Trail, Glenwood Park, and Brookview Park.

Public Transit Study (See Attachment F and I):

Each city, town and township website was accessed and 36 public transit maps were downloaded, georeferenced and digitized to apply transit routes as an overlay to new and old voting locations.

SECRETARY OF STATE

STATE OF INDIANA

200 W. WASHINGTON STREET, INDIANAPOLIS, IN 46204
WWW.SOS.IN.GOV

From spatial analysis, it was determined that 119 of the proposed 288 voting locations (41%) fall within a quarter mile from these public transit corridors. Similarly, 45 out of the 94 weighted mean center population points (48%) fall within a quarter mile of these public transit routes.

Voter to Representative Proportion Analysis (See Attachment J):

The authors of the suggested plan confirmed that the proposed precinct consolidations would not result in any change to the number of city or town council seats, which is fixed by Indiana state law or municipal ordinance. The authors also confirmed that the suggested plan was not intended to result in consolidated precincts which cross the boundaries of municipalities or their council districts. The suggested plan is modified as incorporated into this order to eliminate one instance (G3-11 Consolidation Report Validation) where a typographical error indicated that a consolidated precinct would cross a city boundary line.

The ratio of each representative to active and all voters was calculated for each city, town and township, independent of the suggested plan. These calculations were analyzed to determine voter to representative increases or decreases when comparing the November 1, 2017 and July 11, 2018 Indiana Statewide Voter Registration datasets.

In most city, towns or townships, there was an increase in the ratio of active voters to each representative, with small variances. In the following four units of local government, there was a decrease in the ratio of active voters to each representative.

- Cedar Creek Township (-778);
- East Chicago (-7);
- Lake Station (-13); and
- West Creek Townships (-533).

Demographics Study (See Attachment B and C):

Demographics from the 2010 census data were incorporated and correlated to the data of both existing precincts and precincts under the suggested plan. This data was then analyzed with respect to several demographic factors. Aggregate population data from the 2016 American Community Survey (ACS) survey was also considered in the development of this plan to identify population migration resulting in the increase or decrease of population in several large municipalities since 2010.

The result of this analysis indicates that there would be no demographic change (such as dilution or compaction of minority populations resulting from the suggested plan) within any city, town or township since no proposed consolidated precincts cross any city, town or township boundaries.

Attachment A: Consolidated Precinct Counts by Municipality

7/31/2018

City/Town/Township	# of Precincts Prior to Consolidation:	# of Precincts After Consolidation:	# of Consolidations
CALUMET TOWNSHIP	6	5	1
CEDAR CREEK TOWNSHIP	9	8	1
CEDAR LAKE	10	9	1
CENTER TOWNSHIP	6	5	1
CROWN POINT	30	22	8
DYER	15	12	3
EAGLE CREEK TOWNSHIP	1	1	0
EAST CHICAGO	31	17	14
GARY	105	51	54
GRIFFITH	18	14	4
HAMMOND	79	46	33
HANOVER TOWNSHIP	2	2	0
HIGHLAND	25	18	7
HOBART	28	21	7
LAKE STATION	17	13	4
MERRILLVILLE	34	25	9
MUNSTER	25	20	5
NEW CHICAGO	4	3	1
ROSS TWN	1	1	0
SCHERERVILLE	28	21	7
ST JOHN	17	15	2
ST JOHN TOWNSHIP	9	8	1
WEST CREEK TOWNSHIP	7	5	2
WHITING	6	3	3
WINFIELD TOWNSHIP	10	8	2
Grand Total	523	353	170

Attachment B: Demographic Study Post-Consolidation

7/31/2018

Row Labels	Sum of Total Population	Sum of All Minorities	Sum of White Alone	Sum of Black or African American Alone	Sum of American Indian and Alaska Native Alone	Sum of Asian Alone	Sum of Native Hawaiian and Other Pacific Islanders Alone	Sum of Two or More Races Alone	Sum of Some Other Race Alone
CALUMET	7268	2224	5044	1643	39	16	4	228	294
CALUMET TOWNSHIP PRECINCT 05	1229	306	923	241	2	3	0	36	24
CALUMET TOWNSHIP PRECINCT 06	1464	169	1295	38	15	5	2	46	63
CALUMET TOWNSHIP PRECINCT 10	2050	491	1559	273	14	6	2	74	122
CALUMET TOWNSHIP PRECINCT 12	991	101	890	13	6	0	0	30	52
CALUMET TOWNSHIP PRECINCT 14	1534	1157	377	1078	2	2	0	42	33
CEDAR CREEK TOWNSHIP	12548	521	12027	59	36	39	5	174	208
CEDAR CREEK TOWNSHIP PRECINCT 01	1891	70	1821	5	3	2	0	33	27
CEDAR CREEK TOWNSHIP PRECINCT 02	2058	72	1986	7	5	2	0	30	28
CEDAR CREEK TOWNSHIP PRECINCT 04	1032	45	987	10	6	2	0	9	18
CEDAR CREEK TOWNSHIP PRECINCT 05	1968	92	1876	6	6	5	3	23	49
CEDAR CREEK TOWNSHIP PRECINCT 06	1337	73	1264	11	2	4	2	19	35
CEDAR CREEK TOWNSHIP PRECINCT 07	1650	57	1593	4	1	12	0	27	13
CEDAR CREEK TOWNSHIP PRECINCT 08	1147	69	1078	9	10	7	0	15	28
CEDAR CREEK TOWNSHIP PRECINCT 09	1465	43	1422	7	3	5	0	18	10
CEDAR LAKE	11613	596	11017	53	29	45	3	191	275
CEDAR LAKE PRECINCT 01	1857	119	1738	8	4	8	0	49	50
CEDAR LAKE PRECINCT 02	2095	82	2013	5	5	9	0	37	26
CEDAR LAKE PRECINCT 03	1742	122	1620	9	6	4	1	24	78
CEDAR LAKE PRECINCT 05	1568	76	1492	4	4	4	0	18	46
CEDAR LAKE PRECINCT 06	1388	53	1335	8	4	5	0	21	15
CEDAR LAKE PRECINCT 07	1062	58	1004	8	5	6	1	11	27
CEDAR LAKE PRECINCT 08	26	1	25	0	0	0	0	1	0
CEDAR LAKE PRECINCT 09	4	0	4	0	0	0	0	0	0
CEDAR LAKE PRECINCT 10	1871	85	1786	11	1	9	1	30	33
CENTER TOWNSHIP	6509	224	6285	44	6	48	1	88	37
CENTER TOWNSHIP PRECINCT 01	822	25	797	0	0	9	0	8	8
CENTER TOWNSHIP PRECINCT 03	1608	66	1542	8	4	22	0	27	5
CENTER TOWNSHIP PRECINCT 04	1387	55	1332	17	0	7	0	22	9
CENTER TOWNSHIP PRECINCT 05	1200	31	1169	1	1	6	1	18	4
CENTER TOWNSHIP PRECINCT 06	1492	47	1445	18	1	4	0	13	11
CROWN POINT	27885	3233	24652	1711	52	489	3	447	531
CROWN POINT PRECINCT 02	1372	51	1321	3	3	13	0	16	16
CROWN POINT PRECINCT 04	1620	102	1518	37	1	14	0	20	30
CROWN POINT PRECINCT 05	2059	101	1958	10	1	2	1	44	43
CROWN POINT PRECINCT 06	1677	52	1625	6	5	9	0	15	17

Attachment B: Demographic Study Post-Consolidation

7/31/2018

CROWN POINT PRECINCT 09	1221	39	1182	15	0	5	1	9	9
CROWN POINT PRECINCT 10	1531	253	1278	118	3	55	0	45	32
CROWN POINT PRECINCT 11	2451	823	1628	690	3	5	0	41	84
CROWN POINT PRECINCT 12	1341	73	1268	13	0	11	0	21	28
CROWN POINT PRECINCT 13	824	56	768	16	0	24	0	8	8
CROWN POINT PRECINCT 14	1171	25	1146	9	5	2	0	5	4
CROWN POINT PRECINCT 15	1569	112	1457	24	4	33	0	22	29
CROWN POINT PRECINCT 18	1296	330	966	182	2	37	0	46	63
CROWN POINT PRECINCT 19	1227	103	1124	31	1	32	0	21	18
CROWN POINT PRECINCT 20	881	51	830	5	3	18	0	13	12
CROWN POINT PRECINCT 21	603	49	554	30	0	18	0	0	1
CROWN POINT PRECINCT 24	885	92	793	27	0	32	0	16	17
CROWN POINT PRECINCT 25	1668	514	1154	393	9	37	0	39	36
CROWN POINT PRECINCT 26	68	0	68	0	0	0	0	0	0
CROWN POINT PRECINCT 29	1440	145	1295	28	3	63	0	21	30
CROWN POINT PRECINCT 30	1083	53	1030	9	4	14	1	15	10
CROWN POINT PRECINCT 31	790	117	673	50	0	32	0	9	26
CROWN POINT PRECINCT 32	1108	92	1016	15	5	33	0	21	18
DYER	16680	1631	15049	411	39	482	3	288	408
DYER PRECINCT 01	1423	96	1327	19	3	16	0	27	31
DYER PRECINCT 02	1196	342	854	99	2	142	0	40	59
DYER PRECINCT 03	2020	162	1858	53	4	24	1	28	52
DYER PRECINCT 04	1136	144	992	33	6	28	0	20	57
DYER PRECINCT 05	903	60	843	4	10	12	0	20	14
DYER PRECINCT 06	1703	116	1587	8	1	19	2	55	31
DYER PRECINCT 07	1517	108	1409	36	2	26	0	9	35
DYER PRECINCT 08	1075	31	1044	10	0	2	0	2	17
DYER PRECINCT 09	1380	290	1090	99	1	142	0	22	26
DYER PRECINCT 10	1534	104	1430	18	1	22	0	35	28
DYER PRECINCT 11	1683	109	1574	22	4	25	0	24	34
DYER PRECINCT 14	1110	69	1041	10	5	24	0	6	24
EAGLE CREEK TOWNSHIP	1668	39	1629	2	2	5	0	16	14
EAGLE CREEK TOWNSHIP PRECINCT 01	1668	39	1629	2	2	5	0	16	14
EAST CHICAGO	29698	19168	10530	12736	187	34	12	828	5371
EAST CHICAGO PRECINCT 02	1158	534	624	141	10	0	0	25	358
EAST CHICAGO PRECINCT 03	1883	756	1127	302	19	1	0	49	385
EAST CHICAGO PRECINCT 05	2435	1448	987	886	26	4	0	58	474
EAST CHICAGO PRECINCT 07	2511	1354	1157	680	18	1	0	75	580
EAST CHICAGO PRECINCT 08	2304	1040	1264	461	17	2	2	51	507
EAST CHICAGO PRECINCT 11	1072	354	718	88	1	4	4	37	220
EAST CHICAGO PRECINCT 13	1921	1445	476	1207	12	2	2	48	174

Attachment B: Demographic Study Post-Consolidation

7/31/2018

EAST CHICAGO PRECINCT 17	2477	1990	487	1468	26	1	0	91	404
EAST CHICAGO PRECINCT 22	1772	1181	591	700	7	2	3	49	420
EAST CHICAGO PRECINCT 23	1209	695	514	364	6	0	0	39	286
EAST CHICAGO PRECINCT 24	1421	1003	418	779	5	4	0	42	173
EAST CHICAGO PRECINCT 25	1568	1030	538	583	17	5	0	47	378
EAST CHICAGO PRECINCT 28	1612	1081	531	772	14	0	0	23	272
EAST CHICAGO PRECINCT 31	1553	1087	466	657	0	1	0	42	387
EAST CHICAGO PRECINCT 33	1396	1065	331	861	5	0	1	45	153
EAST CHICAGO PRECINCT 35	1709	1481	228	1276	3	7	0	48	147
EAST CHICAGO PRECINCT 36	1697	1624	73	1511	1	0	0	59	53
GARY	80294	71675	8619	68107	241	164	8	1685	1470
GARY PRECINCT 1-03	1792	1569	223	1487	11	2	0	50	19
GARY PRECINCT 1-08	1728	1443	285	1350	2	10	0	64	17
GARY PRECINCT 1-10	971	937	34	883	14	0	0	21	19
GARY PRECINCT 1-16	1678	1553	125	1445	2	1	0	48	57
GARY PRECINCT 1-18	1435	1240	195	1152	5	3	0	48	32
GARY PRECINCT 1-20	1730	1500	230	1390	10	8	0	55	37
GARY PRECINCT 1-22	2249	1933	316	1839	6	14	1	43	30
GARY PRECINCT 1-24	1989	1070	919	1001	6	15	0	38	10
GARY PRECINCT 2-01	2247	2107	140	1945	8	3	0	56	95
GARY PRECINCT 2-03	1155	1121	34	1095	0	3	0	18	5
GARY PRECINCT 2-04	1800	1738	62	1649	11	0	0	44	34
GARY PRECINCT 2-10	1101	1055	46	981	0	7	0	23	44
GARY PRECINCT 2-12	1674	1660	14	1634	5	1	0	14	6
GARY PRECINCT 2-17	1429	1417	12	1385	1	0	0	21	10
GARY PRECINCT 2-20	1265	1173	92	1112	5	0	0	18	38
GARY PRECINCT 2-21	1799	1747	52	1694	7	0	1	30	15
GARY PRECINCT 2-24	973	839	134	717	1	3	1	34	83
GARY PRECINCT 3-03	2131	502	1629	189	18	4	1	96	194
GARY PRECINCT 3-11	1667	1645	22	1591	1	2	0	46	5
GARY PRECINCT 3-15	1887	1864	23	1821	4	3	0	24	12
GARY PRECINCT 3-16	1333	1322	11	1311	1	0	0	9	1
GARY PRECINCT 3-17	1592	1585	7	1548	7	0	0	28	2
GARY PRECINCT 3-19	2066	2032	34	1943	1	5	0	45	38
GARY PRECINCT 3-21	1406	1361	45	1309	0	0	0	22	30
GARY PRECINCT 3-26	1594	1580	14	1538	3	0	0	31	8
GARY PRECINCT 4-03	1631	1586	45	1562	3	1	0	16	4
GARY PRECINCT 4-05	1198	1185	13	1164	6	1	0	10	4
GARY PRECINCT 4-10	1563	1547	16	1528	3	0	0	16	0
GARY PRECINCT 4-14	1601	1573	28	1547	4	0	0	11	11
GARY PRECINCT 4-16	2107	2087	20	2064	0	0	0	21	2

Attachment B: Demographic Study Post-Consolidation

7/31/2018

GARY PRECINCT 4-22	1540	1530	10	1498	7	0	0	23	2
GARY PRECINCT 4-23	1876	1837	39	1782	2	0	0	37	16
GARY PRECINCT 4-25	1864	1817	47	1758	12	2	0	26	19
GARY PRECINCT 4-28	98	37	61	21	0	0	0	1	15
GARY PRECINCT 5-01	1539	1456	83	1370	5	2	0	40	39
GARY PRECINCT 5-02	972	911	61	887	1	2	1	11	9
GARY PRECINCT 5-03	880	104	776	17	6	0	0	19	62
GARY PRECINCT 5-04	1903	359	1544	150	13	22	2	80	92
GARY PRECINCT 5-06	2089	2062	27	2003	5	3	0	39	12
GARY PRECINCT 5-13	1094	1073	21	1050	1	2	0	13	7
GARY PRECINCT 5-14	1418	1368	50	1298	6	4	0	35	25
GARY PRECINCT 5-16	940	926	14	899	4	0	0	20	3
GARY PRECINCT 5-19	1940	1837	103	1738	2	0	0	38	59
GARY PRECINCT 5-24MV	1	1	0	1	0	0	0	0	0
GARY PRECINCT 6-04	2112	1995	117	1907	7	1	0	45	35
GARY PRECINCT 6-05	1707	1611	96	1500	3	14	0	47	47
GARY PRECINCT 6-07	1346	1235	111	1151	6	0	0	48	30
GARY PRECINCT 6-10	1075	976	99	931	7	6	0	17	15
GARY PRECINCT 6-12	1191	1114	77	1071	1	4	0	3	35
GARY PRECINCT 6-14	1387	1304	83	1244	2	0	0	35	23
GARY PRECINCT 6-16	2089	1914	175	1816	4	14	0	47	33
GARY PRECINCT 6-20	2442	2237	205	2141	2	2	1	61	30
GRIFFITH	16893	4096	12797	2848	45	133	5	413	652
GRIFFITH PRECINCT 01	861	111	750	26	1	19	0	8	57
GRIFFITH PRECINCT 02	1736	1338	398	1241	3	0	1	54	39
GRIFFITH PRECINCT 03	1373	215	1158	91	2	8	1	38	75
GRIFFITH PRECINCT 05	889	89	800	30	4	7	0	18	30
GRIFFITH PRECINCT 06	1723	127	1596	32	5	16	0	38	36
GRIFFITH PRECINCT 07	1025	71	954	25	4	5	0	15	22
GRIFFITH PRECINCT 09	1038	70	968	5	0	6	0	14	45
GRIFFITH PRECINCT 10	2132	257	1875	83	6	19	0	65	84
GRIFFITH PRECINCT 11	1993	307	1686	111	5	25	3	61	102
GRIFFITH PRECINCT 12	1503	1183	320	1092	10	6	0	36	39
GRIFFITH PRECINCT 15	785	178	607	75	1	0	0	29	73
GRIFFITH PRECINCT 16	1737	143	1594	36	1	22	0	34	50
GRIFFITH PRECINCT 17	28	4	24	1	0	0	0	3	0
GRIFFITH PRECINCT 18	70	3	67	0	3	0	0	0	0
HAMMOND	80830	32846	47984	18224	411	804	24	2660	10723
HAMMOND PRECINCT 1-01	1038	235	803	48	11	5	2	21	148
HAMMOND PRECINCT 1-03	1746	319	1427	37	5	20	0	36	221
HAMMOND PRECINCT 1-05	1491	237	1254	29	0	4	0	29	175

Attachment B: Demographic Study Post-Consolidation

7/31/2018

HAMMOND PRECINCT 1-07	1543	310	1233	91	7	9	0	23	180
HAMMOND PRECINCT 1-08	1445	311	1134	54	7	7	5	28	210
HAMMOND PRECINCT 1-10	1594	357	1237	61	4	8	0	37	247
HAMMOND PRECINCT 1-12	2680	866	1814	234	28	8	0	100	496
HAMMOND PRECINCT 1-16	1812	494	1318	99	1	16	0	40	338
HAMMOND PRECINCT 2-03	2457	900	1557	265	23	1	0	108	503
HAMMOND PRECINCT 2-05	1861	874	987	470	2	2	0	70	330
HAMMOND PRECINCT 2-06	2839	1770	1069	1305	17	5	0	97	346
HAMMOND PRECINCT 2-11	2534	986	1548	310	20	6	0	87	563
HAMMOND PRECINCT 2-12	2147	1115	1032	542	14	2	0	102	455
HAMMOND PRECINCT 2-14	1918	1006	912	546	5	5	2	74	374
HAMMOND PRECINCT 3-03	1919	1106	813	802	6	16	2	84	196
HAMMOND PRECINCT 3-04	2683	1540	1143	919	23	14	0	119	465
HAMMOND PRECINCT 3-05	2240	1795	445	1433	14	2	1	66	279
HAMMOND PRECINCT 3-07	1203	1118	85	1044	0	0	0	21	53
HAMMOND PRECINCT 3-09	1646	1112	534	796	4	6	0	57	249
HAMMOND PRECINCT 3-11	1051	965	86	942	3	0	0	5	15
HAMMOND PRECINCT 3-16	2175	1039	1136	693	11	68	0	70	197
HAMMOND PRECINCT 4-05	1128	458	670	271	11	7	3	46	120
HAMMOND PRECINCT 4-06	2247	756	1491	364	18	17	1	58	298
HAMMOND PRECINCT 4-07	1950	791	1159	393	15	4	0	84	295
HAMMOND PRECINCT 4-09	1486	432	1054	187	13	6	0	39	187
HAMMOND PRECINCT 4-11	1048	483	565	264	8	1	0	35	175
HAMMOND PRECINCT 4-12	2243	668	1575	282	6	11	0	70	299
HAMMOND PRECINCT 4-14	2374	1256	1118	923	4	9	0	113	207
HAMMOND PRECINCT 4-18	1637	409	1228	170	11	8	5	74	141
HAMMOND PRECINCT 5-04	1222	506	716	325	2	40	0	31	108
HAMMOND PRECINCT 5-08	2219	732	1487	443	4	20	0	85	180
HAMMOND PRECINCT 5-12	2316	909	1407	412	3	270	0	70	154
HAMMOND PRECINCT 5-13	1666	497	1169	216	3	60	0	43	175
HAMMOND PRECINCT 5-14	1511	379	1132	146	6	7	1	48	171
HAMMOND PRECINCT 5-15	1905	533	1372	173	19	6	0	54	281
HAMMOND PRECINCT 5-17	2257	806	1451	489	14	12	1	53	237
HAMMOND PRECINCT 6-01	960	280	680	84	2	7	0	35	152
HAMMOND PRECINCT 6-04	1030	311	719	119	4	9	0	55	124
HAMMOND PRECINCT 6-05	1666	480	1186	187	14	5	0	37	237
HAMMOND PRECINCT 6-07	1211	437	774	250	8	23	0	31	125
HAMMOND PRECINCT 6-08	1497	515	982	171	11	10	1	51	271
HAMMOND PRECINCT 6-09	1177	410	767	185	13	7	0	45	160
HAMMOND PRECINCT 6-10	979	233	746	107	3	2	0	18	103
HAMMOND PRECINCT 6-12	2090	628	1462	305	13	18	0	75	217

Attachment B: Demographic Study Post-Consolidation

7/31/2018

HAMMOND PRECINCT 6-13	1822	1212	610	935	1	32	0	89	155
HAMMOND PRECINCT 6-15	1167	270	897	103	0	9	0	47	111
HIGHLAND	23727	2700	21027	997	49	380	1	474	799
HIGHLAND PRECINCT 01	1874	188	1686	50	3	30	0	30	75
HIGHLAND PRECINCT 03	1513	171	1342	35	9	13	0	39	75
HIGHLAND PRECINCT 05	1394	139	1255	38	1	32	0	26	42
HIGHLAND PRECINCT 06	1435	134	1301	21	0	11	0	24	78
HIGHLAND PRECINCT 08	1150	91	1059	34	1	11	0	18	27
HIGHLAND PRECINCT 09	981	78	903	22	0	5	0	28	23
HIGHLAND PRECINCT 10	1584	103	1481	24	5	6	0	20	48
HIGHLAND PRECINCT 11	836	55	781	2	1	8	0	17	27
HIGHLAND PRECINCT 12	1288	212	1076	115	0	12	0	22	63
HIGHLAND PRECINCT 15	1440	84	1356	15	6	18	0	20	25
HIGHLAND PRECINCT 16	947	95	852	16	1	1	0	36	41
HIGHLAND PRECINCT 18	1820	614	1206	401	1	88	0	71	53
HIGHLAND PRECINCT 19	1664	109	1555	17	8	13	1	19	51
HIGHLAND PRECINCT 20	1007	62	945	8	0	11	0	10	33
HIGHLAND PRECINCT 21	751	49	702	4	0	10	0	7	28
HIGHLAND PRECINCT 23	1552	124	1428	10	9	13	0	47	45
HIGHLAND PRECINCT 24	930	69	861	8	0	16	0	14	31
HIGHLAND PRECINCT 26	1561	323	1238	177	4	82	0	26	34
HOBART	29080	4277	24803	2028	107	299	4	686	1153
HOBART PRECINCT 02	1202	231	971	109	8	16	0	36	62
HOBART PRECINCT 03	1151	65	1086	31	0	4	0	12	18
HOBART PRECINCT 04	1782	133	1649	25	4	20	0	40	44
HOBART PRECINCT 05	1210	433	777	278	12	38	0	19	86
HOBART PRECINCT 06	1168	363	805	229	3	25	0	29	77
HOBART PRECINCT 07	1502	53	1449	12	1	7	1	8	24
HOBART PRECINCT 09	962	118	844	41	6	4	0	19	48
HOBART PRECINCT 10	1270	87	1183	22	5	1	0	15	44
HOBART PRECINCT 11	1936	104	1832	12	10	8	0	36	38
HOBART PRECINCT 12	1122	93	1029	15	3	2	0	16	57
HOBART PRECINCT 15	1296	80	1216	34	0	0	1	10	35
HOBART PRECINCT 16	672	79	593	15	3	2	0	29	30
HOBART PRECINCT 19	1923	354	1569	153	11	12	0	75	103
HOBART PRECINCT 20	759	70	689	16	1	2	0	19	32
HOBART PRECINCT 21	701	96	605	33	1	7	0	25	30
HOBART PRECINCT 22	1656	156	1500	39	6	4	0	34	73
HOBART PRECINCT 23	1976	273	1703	110	13	10	0	64	76
HOBART PRECINCT 24	1779	389	1390	227	2	21	0	48	91
HOBART PRECINCT 25	1091	180	911	71	6	17	0	37	49

Attachment B: Demographic Study Post-Consolidation

7/31/2018

HOBART PRECINCT 27	1292	114	1178	37	2	11	0	35	29
HOBART PRECINCT 29	2630	806	1824	519	10	88	2	80	107
HOBART TOWNSHIP	2642	505	2137	72	18	18	1	130	266
HOBART TOWNSHIP 05	2035	386	1649	45	14	15	1	107	204
HOBART TOWNSHIP 08	479	66	413	5	2	3	0	16	40
HOBART TOWNSHIP 09	128	53	75	22	2	0	0	7	22
LAKE MICHIGAN	0	0	0	0	0	0	0	0	0
LAKE MICHIGAN NV	0	0	0	0	0	0	0	0	0
LAKE STATION	12646	2558	10088	455	66	40	3	516	1478
LAKE STATION PRECINCT 01	1298	245	1053	22	8	0	0	52	163
LAKE STATION PRECINCT 01A	59	15	44	0	0	0	0	0	15
LAKE STATION PRECINCT 02	1284	176	1108	21	10	6	0	45	94
LAKE STATION PRECINCT 05	369	69	300	12	0	0	0	7	50
LAKE STATION PRECINCT 05A	289	61	228	10	2	0	0	8	41
LAKE STATION PRECINCT 06	1027	169	858	35	9	3	0	28	94
LAKE STATION PRECINCT 07	1130	237	893	50	4	3	0	58	122
LAKE STATION PRECINCT 07A	708	131	577	14	1	0	0	28	88
LAKE STATION PRECINCT 08	1630	399	1231	73	10	4	2	59	251
LAKE STATION PRECINCT 08A	30	6	24	4	1	0	0	0	1
LAKE STATION PRECINCT 10	837	302	535	39	1	2	0	52	208
LAKE STATION PRECINCT 11	2138	403	1735	88	17	12	1	102	183
LAKE STATION PRECINCT 13	1847	345	1502	87	3	10	0	77	168
LAKE STATION PRECINCT 14NV	0	0	0	0	0	0	0	0	0
MERRILLVILLE	35246	18908	16338	15673	70	421	6	1111	1627
MERRILLVILLE PRECINCT 01	1114	716	398	659	0	7	0	29	21
MERRILLVILLE PRECINCT 02	1051	175	876	98	1	6	0	26	44
MERRILLVILLE PRECINCT 03	1433	549	884	421	7	28	0	30	63
MERRILLVILLE PRECINCT 04	1732	811	921	682	2	28	0	40	59
MERRILLVILLE PRECINCT 05	2159	879	1280	631	5	15	0	90	138
MERRILLVILLE PRECINCT 07	1913	905	1008	713	13	21	0	53	105
MERRILLVILLE PRECINCT 08	917	410	507	346	2	4	0	27	31
MERRILLVILLE PRECINCT 09	1243	961	282	901	0	19	0	11	30
MERRILLVILLE PRECINCT 10	1125	873	252	797	4	2	0	27	43
MERRILLVILLE PRECINCT 11	895	719	176	661	1	3	0	30	24
MERRILLVILLE PRECINCT 12	2051	489	1562	337	3	19	0	53	77
MERRILLVILLE PRECINCT 13	1746	1221	525	1057	5	45	0	55	59
MERRILLVILLE PRECINCT 15	1503	795	708	625	2	5	5	62	96
MERRILLVILLE PRECINCT 16	1417	1027	390	824	1	41	0	64	97
MERRILLVILLE PRECINCT 18	1829	1335	494	1215	3	7	0	40	70
MERRILLVILLE PRECINCT 19	1140	851	289	751	2	10	0	43	45
MERRILLVILLE PRECINCT 21	2456	1115	1341	812	2	24	0	128	149

Attachment B: Demographic Study Post-Consolidation

7/31/2018

MERRILLVILLE PRECINCT 22	1622	1196	426	1083	6	22	0	29	56
MERRILLVILLE PRECINCT 23	1076	452	624	343	1	8	0	42	58
MERRILLVILLE PRECINCT 28	1374	956	418	764	4	13	0	47	128
MERRILLVILLE PRECINCT 29	1055	628	427	539	0	1	0	54	34
MERRILLVILLE PRECINCT 30	1293	372	921	206	0	16	0	69	81
MERRILLVILLE PRECINCT 32	701	252	449	214	0	9	0	4	25
MERRILLVILLE PRECINCT 33	1626	828	798	662	5	47	0	40	74
MERRILLVILLE PRECINCT 34	775	393	382	332	1	21	1	18	20
MUNSTER	23603	3395	20208	821	47	1377	3	415	732
MUNSTER PRECINCT 01	1627	307	1320	154	1	23	0	39	90
MUNSTER PRECINCT 02	1794	270	1524	54	8	113	0	45	50
MUNSTER PRECINCT 04	1312	197	1115	33	9	76	0	35	44
MUNSTER PRECINCT 05	1025	142	883	40	3	19	0	24	56
MUNSTER PRECINCT 06	1056	179	877	68	4	21	0	27	59
MUNSTER PRECINCT 08	1372	148	1224	48	0	46	0	9	45
MUNSTER PRECINCT 09	967	91	876	30	0	27	0	10	24
MUNSTER PRECINCT 11	908	81	827	9	0	20	0	17	35
MUNSTER PRECINCT 12	1389	115	1274	16	1	33	1	16	48
MUNSTER PRECINCT 13	1049	130	919	13	0	82	0	23	12
MUNSTER PRECINCT 14	959	98	861	27	2	39	0	13	17
MUNSTER PRECINCT 15	872	86	786	7	3	20	0	13	43
MUNSTER PRECINCT 16	824	86	738	12	0	40	0	8	26
MUNSTER PRECINCT 18	1156	132	1024	43	2	53	0	13	21
MUNSTER PRECINCT 19	1652	190	1462	33	1	67	1	23	65
MUNSTER PRECINCT 20	959	141	818	42	0	62	0	9	28
MUNSTER PRECINCT 21	816	135	681	29	1	71	0	8	26
MUNSTER PRECINCT 22	1408	295	1113	57	3	193	0	23	19
MUNSTER PRECINCT 24	1489	420	1069	68	7	274	0	50	21
MUNSTER PRECINCT 25	969	152	817	38	2	98	1	10	3
NEW CHICAGO	2570	100	2470	11	3	14	0	30	42
HANOVER TOWNSHIP PRECINCT 01	1580	38	1542	3	3	5	0	12	15
HANOVER TOWNSHIP PRECINCT 02	990	62	928	8	0	9	0	18	27
ROSS TOWNSHIP	224	26	198	12	6	1	0	2	5
ROSS TOWNSHIP PRECINCT 20	224	26	198	12	6	1	0	2	5
SCHERERVILLE	29417	3860	25557	1591	55	824	3	520	867
SCHERERVILLE PRECINCT 02	1076	80	996	27	0	12	1	15	25
SCHERERVILLE PRECINCT 04	1647	344	1303	146	9	46	0	29	114
SCHERERVILLE PRECINCT 06	1029	90	939	34	1	13	0	17	25
SCHERERVILLE PRECINCT 07	1689	101	1588	9	3	14	0	26	49
SCHERERVILLE PRECINCT 09	1615	99	1516	21	1	25	0	18	34
SCHERERVILLE PRECINCT 10	1836	291	1545	130	1	41	0	61	58

Attachment B: Demographic Study Post-Consolidation

7/31/2018

SCHERERVILLE PRECINCT 13	1680	155	1525	48	2	34	0	12	59
SCHERERVILLE PRECINCT 14	1506	100	1406	9	6	16	1	29	39
SCHERERVILLE PRECINCT 15	1003	136	867	63	0	44	0	18	11
SCHERERVILLE PRECINCT 16	1965	161	1804	32	3	45	0	27	54
SCHERERVILLE PRECINCT 17	2116	406	1710	208	2	45	0	34	117
SCHERERVILLE PRECINCT 18	1235	76	1159	23	2	28	0	12	11
SCHERERVILLE PRECINCT 19	842	57	785	25	1	11	0	8	12
SCHERERVILLE PRECINCT 20	1453	501	952	327	11	50	1	46	66
SCHERERVILLE PRECINCT 22	2026	343	1683	173	1	50	0	60	59
SCHERERVILLE PRECINCT 24	1007	94	913	41	1	5	0	19	28
SCHERERVILLE PRECINCT 26	950	75	875	19	2	25	0	5	24
SCHERERVILLE PRECINCT 27	1023	172	851	36	0	112	0	19	5
SCHERERVILLE PRECINCT 28	1281	138	1143	69	3	21	0	33	12
SCHERERVILLE PRECINCT 32	1388	231	1157	89	5	65	0	20	52
SCHERERVILLE PRECINCT 33	1050	210	840	62	1	122	0	12	13
ST JOHN	15195	972	14223	199	19	189	10	188	367
ST JOHN TOWN PRECINCT 01	981	52	929	11	1	6	0	4	30
ST JOHN TOWN PRECINCT 02	972	45	927	6	0	11	0	17	11
ST JOHN TOWN PRECINCT 03	1045	70	975	11	6	12	0	17	24
ST JOHN TOWN PRECINCT 04	1228	53	1175	6	0	14	0	5	28
ST JOHN TOWN PRECINCT 05	547	78	469	34	0	26	0	10	8
ST JOHN TOWN PRECINCT 06	1254	36	1218	3	2	4	0	7	20
ST JOHN TOWN PRECINCT 07	784	105	679	25	0	28	0	14	38
ST JOHN TOWN PRECINCT 08	827	55	772	6	5	14	0	14	16
ST JOHN TOWN PRECINCT 09	841	74	767	10	0	8	6	16	34
ST JOHN TOWN PRECINCT 11	1844	96	1748	23	1	5	0	26	41
ST JOHN TOWN PRECINCT 12	488	51	437	9	0	8	0	11	23
ST JOHN TOWN PRECINCT 13	179	6	173	0	0	0	0	3	3
ST JOHN TOWN PRECINCT 14	904	51	853	17	1	10	0	10	13
ST JOHN TOWN PRECINCT 15	1566	118	1448	27	2	26	4	19	40
ST JOHN TOWN PRECINCT 16	1735	82	1653	11	1	17	0	15	38
ST JOHN 18 ERROR	66	6	60	0	0	2	0	3	1
ERROR ERROR No ST JOHN TOWN 18	66	6	60	0	0	2	0	3	1
ST JOHN TOWNSHIP	10521	974	9547	204	24	105	4	208	429
ST JOHN TOWNSHIP PRECINCT 01	918	69	849	15	1	10	0	20	23
ST JOHN TOWNSHIP PRECINCT 02	1440	68	1372	4	1	6	0	16	41
ST JOHN TOWNSHIP PRECINCT 03	1317	155	1162	61	3	17	0	39	35
ST JOHN TOWNSHIP PRECINCT 04	1015	82	933	10	2	25	0	14	31
ST JOHN TOWNSHIP PRECINCT 05	506	11	495	2	2	2	2	2	1
ST JOHN TOWNSHIP PRECINCT 07	1334	88	1246	16	3	10	0	26	33
ST JOHN TOWNSHIP PRECINCT 08	2556	312	2244	42	8	27	1	66	168

Attachment B: Demographic Study Post-Consolidation

7/31/2018

ST JOHN TOWNSHIP PRECINCT 09	1435	189	1246	54	4	8	1	25	97
WEST CREEK TOWNSHIP	7126	250	6876	37	17	25	0	89	82
WEST CREEK TOWNSHIP PRECINCT 01A	277	8	269	0	3	3	0	2	0
WEST CREEK TOWNSHIP PRECINCT 02	2106	80	2026	10	2	4	0	34	30
WEST CREEK TOWNSHIP PRECINCT 03	1701	66	1635	3	2	10	0	21	30
WEST CREEK TOWNSHIP PRECINCT 04	1696	45	1651	3	9	5	0	18	10
WEST CREEK TOWNSHIP PRECINCT 06	1346	51	1295	21	1	3	0	14	12
WHITING	4997	1186	3811	174	37	34	0	158	783
WHITING PRECINCT 01	1639	441	1198	38	9	20	0	57	317
WHITING PRECINCT 03	1663	328	1335	70	24	6	0	49	179
WHITING PRECINCT 04	1695	417	1278	66	4	8	0	52	287
WINFIELD	10827	938	9889	231	28	202	5	193	279
WINFIELD TOWNSHIP PRECINCT 01	1294	208	1086	65	6	61	0	23	53
WINFIELD TOWNSHIP PRECINCT 02	948	65	883	4	1	7	4	16	33
WINFIELD TOWNSHIP PRECINCT 05	1306	95	1211	28	7	8	0	24	28
WINFIELD TOWNSHIP PRECINCT 06	1646	117	1529	26	0	15	0	35	41
WINFIELD TOWNSHIP PRECINCT 07	1735	89	1646	5	1	10	0	40	33
WINFIELD TOWNSHIP PRECINCT 08	1141	72	1069	25	3	17	0	10	17
WINFIELD TOWNSHIP PRECINCT 09	1494	224	1270	68	10	71	1	32	42
WINFIELD TOWNSHIP PRECINCT 10	1263	68	1195	10	0	13	0	13	32
Grand Total	499773	176908	322865	128343	1633	6190	108	11741	28893

Attachment C: Demographic Study Pre-Consolidation

7/31/2018

Row Labels	Sum of Total Population	Sum of All Minorities	Sum of White Alone	Sum of Black or African American Alone	Sum of Asian Alone	Sum of American Indian and Alaska Native Alone	Sum of Native Hawaiian and Other Pacific Islanders Alone	Sum of Two or More Races Alone	Sum of Some Other Race Alone
CALUMET	7268	2224	5044	1643	16	39	4	228	294
CALLUMET TOWNSHIP PRECINCT 04	756	182	574	101	2	2	1	39	37
CALUMET TOWNSHIP PRECINCT 05	1229	306	923	241	3	2	0	36	24
CALUMET TOWNSHIP PRECINCT 06	1464	169	1295	38	5	15	2	46	63
CALUMET TOWNSHIP PRECINCT 10	1294	309	985	172	4	12	1	35	85
CALUMET TOWNSHIP PRECINCT 12	991	101	890	13	0	6	0	30	52
CALUMET TOWNSHIP PRECINCT 14	1534	1157	377	1078	2	2	0	42	33
CEDAR CREEK TOWNSHIP	12548	521	12027	59	39	36	5	174	208
CEDAR CREEK TOWNSHIP PRECINCT 01	1891	70	1821	5	2	3	0	33	27
CEDAR CREEK TOWNSHIP PRECINCT 02	2058	72	1986	7	2	5	0	30	28
CEDAR CREEK TOWNSHIP PRECINCT 03	789	29	760	0	3	2	0	11	13
CEDAR CREEK TOWNSHIP PRECINCT 04	1032	45	987	10	2	6	0	9	18
CEDAR CREEK TOWNSHIP PRECINCT 05	1179	63	1116	6	2	4	3	12	36
CEDAR CREEK TOWNSHIP PRECINCT 06	1337	73	1264	11	4	2	2	19	35
CEDAR CREEK TOWNSHIP PRECINCT 07	1650	57	1593	4	12	1	0	27	33
CEDAR CREEK TOWNSHIP PRECINCT 08	1147	69	1078	9	7	10	0	15	28
CEDAR CREEK TOWNSHIP PRECINCT 09	1465	43	1422	7	5	3	0	18	10
CEDAR LAKE	11613	596	11017	53	45	29	3	191	275
CEDAR LAKE PRECINCT 01	1857	119	1738	8	8	4	0	49	50
CEDAR LAKE PRECINCT 02	2095	82	2013	5	9	5	0	37	26
CEDAR LAKE PRECINCT 03	1742	122	1620	9	4	6	1	24	78
CEDAR LAKE PRECINCT 04	1871	85	1786	11	9	1	1	30	33
CEDAR LAKE PRECINCT 05	1568	76	1492	4	4	4	0	18	46
CEDAR LAKE PRECINCT 06	1388	53	1335	8	5	4	0	21	15
CEDAR LAKE PRECINCT 07	1062	58	1004	8	6	5	1	11	27
CEDAR LAKE PRECINCT 08	26	1	25	0	0	0	0	1	0
CEDAR LAKE PRECINCT 09	4	0	4	0	0	0	0	0	0
CEDAR LAKE PRECINCT 10	0	0	0	0	0	0	0	0	0
CENTER TOWNSHIP	6509	224	6285	44	48	6	1	88	37
CENTER TOWNSHIP PRECINCT 01	822	25	797	0	9	0	0	8	8
CENTER TOWNSHIP PRECINCT 02	483	2	481	0	0	0	0	2	0
CENTER TOWNSHIP PRECINCT 03	1608	66	1542	8	22	4	0	27	5
CENTER TOWNSHIP PRECINCT 04	1387	55	1332	17	7	0	0	22	9
CENTER TOWNSHIP PRECINCT 05	1200	31	1169	1	6	1	1	18	4
CENTER TOWNSHIP PRECINCT 06	1009	45	964	18	4	1	0	11	11
CROWN POINT	27885	3233	24652	1711	489	52	3	447	531
CROWN POINT PRECINCT 01	661	122	539	73	9	1	0	28	11
CROWN POINT PRECINCT 02	1372	51	1321	3	13	3	0	16	16
CROWN POINT PRECINCT 03	809	49	760	5	1	1	1	21	20
CROWN POINT PRECINCT 04	1144	87	1057	37	13	1	0	16	20
CROWN POINT PRECINCT 05	1250	52	1198	5	1	0	0	23	23

Attachment C: Demographic Study Pre-Consolidation

7/31/2018

CROWN POINT PRECINCT 06	1027	30	997	0	7	0	0	0	13	10
CROWN POINT PRECINCT 07	476	15	461	0	1	0	0	0	4	10
CROWN POINT PRECINCT 08	650	22	628	6	2	5	0	0	2	7
CROWN POINT PRECINCT 09	992	24	968	8	1	0	1	0	6	8
CROWN POINT PRECINCT 10	870	131	739	45	46	2	0	0	17	21
CROWN POINT PRECINCT 11	2451	823	1628	690	5	3	0	0	41	84
CROWN POINT PRECINCT 12	1341	73	1268	13	11	0	0	0	21	28
CROWN POINT PRECINCT 13	824	56	768	16	24	0	0	0	8	8
CROWN POINT PRECINCT 14	1171	25	1146	9	2	5	0	0	5	4
CROWN POINT PRECINCT 15	1117	62	1055	15	0	4	0	0	15	28
CROWN POINT PRECINCT 16	645	82	563	25	14	2	0	0	15	26
CROWN POINT PRECINCT 17	731	219	512	159	21	0	0	0	19	20
CROWN POINT PRECINCT 18	1296	330	966	182	37	2	0	0	46	63
CROWN POINT PRECINCT 19	1227	103	1124	31	32	1	0	0	21	18
CROWN POINT PRECINCT 20	881	51	830	5	18	3	0	0	13	12
CROWN POINT PRECINCT 21	603	49	554	30	18	0	0	0	0	1
CROWN POINT PRECINCT 22	452	50	402	9	33	0	0	0	7	1
CROWN POINT PRECINCT 23	229	15	214	7	4	0	0	0	3	1
CROWN POINT PRECINCT 24	885	92	793	27	32	0	0	0	16	17
CROWN POINT PRECINCT 25	937	295	642	234	16	9	0	0	20	16
CROWN POINT PRECINCT 26	68	0	68	0	0	0	0	0	0	0
CROWN POINT PRECINCT 29	795	63	732	3	49	1	0	0	6	4
CROWN POINT PRECINCT 30	1083	53	1030	9	14	4	1	0	15	10
CROWN POINT PRECINCT 31	790	117	673	50	32	0	0	0	9	26
CROWN POINT PRECINCT 32	1108	92	1016	15	33	5	0	0	21	18
DYER	16680	1631	15049	411	482	39	3	288	408	408
DYER PRECINCT 01	861	59	802	16	15	0	0	0	8	20
DYER PRECINCT 02	1196	342	854	99	142	2	0	0	40	59
DYER PRECINCT 03	2020	162	1858	53	24	4	1	0	28	52
DYER PRECINCT 04	1136	144	992	33	28	6	0	0	20	57
DYER PRECINCT 05	903	60	843	4	12	10	0	0	20	14
DYER PRECINCT 06	976	57	919	7	10	0	0	0	25	15
DYER PRECINCT 07	1517	108	1409	36	26	2	0	0	9	35
DYER PRECINCT 08	1075	31	1044	10	2	0	0	0	2	17
DYER PRECINCT 09	1380	290	1090	99	142	1	0	0	22	26
DYER PRECINCT 10	1534	104	1430	18	22	0	0	0	35	28
DYER PRECINCT 11	1033	51	982	7	15	0	0	0	6	23
DYER PRECINCT 12	727	59	668	1	9	1	2	0	30	16
DYER PRECINCT 13	562	37	525	3	1	3	0	0	19	11
DYER PRECINCT 14	1110	69	1041	10	24	5	0	0	6	24
DYER PRECINCT 15	650	58	592	15	10	4	0	0	18	11
EAGLE CREEK TOWNSHIP	1668	39	1629	2	5	2	0	0	16	14
EAGLE CREEK TOWNSHIP PRECINCT 01	1668	39	1629	2	5	2	0	0	16	14
EAST CHICAGO	29698	19168	10530	12736	34	187	12	828	5371	158
EAST CHICAGO PRECINCT 01	783	277	506	95	1	3	0	0	20	158

Attachment C: Demographic Study Pre-Consolidation

7/31/2018

EAST CHICAGO PRECINCT 02	1158	534	624	141	0	10	0	25	358
EAST CHICAGO PRECINCT 03	1100	479	621	207	0	16	0	29	227
EAST CHICAGO PRECINCT 04	1007	646	361	419	4	23	0	19	181
EAST CHICAGO PRECINCT 05	1428	802	626	467	0	3	0	39	293
EAST CHICAGO PRECINCT 06	1156	604	552	268	1	12	0	36	287
EAST CHICAGO PRECINCT 07	1355	750	605	412	0	6	0	39	293
EAST CHICAGO PRECINCT 08	1040	400	640	148	0	9	0	15	228
EAST CHICAGO PRECINCT 09	1264	640	624	313	2	8	2	36	279
EAST CHICAGO PRECINCT 11	1072	354	718	88	4	1	4	37	220
EAST CHICAGO PRECINCT 12	856	465	391	268	2	12	2	38	143
EAST CHICAGO PRECINCT 13	1065	980	85	939	0	0	0	10	31
EAST CHICAGO PRECINCT 14	847	793	54	658	0	10	0	33	92
EAST CHICAGO PRECINCT 17	979	703	276	484	1	10	0	38	170
EAST CHICAGO PRECINCT 18	651	494	157	326	0	6	0	20	142
EAST CHICAGO PRECINCT 20	539	210	329	78	0	1	0	27	104
EAST CHICAGO PRECINCT 21	898	593	305	393	1	1	0	27	171
EAST CHICAGO PRECINCT 22	874	588	286	307	1	6	3	22	249
EAST CHICAGO PRECINCT 23	1209	695	514	364	0	6	0	39	286
EAST CHICAGO PRECINCT 24	882	793	89	701	4	4	0	15	69
EAST CHICAGO PRECINCT 25	918	661	257	337	3	11	0	33	277
EAST CHICAGO PRECINCT 26	650	369	281	246	2	6	0	14	101
EAST CHICAGO PRECINCT 27	488	330	158	233	0	0	0	12	85
EAST CHICAGO PRECINCT 28	815	552	263	377	0	12	0	14	149
EAST CHICAGO PRECINCT 29	324	208	116	142	0	1	0	6	59
EAST CHICAGO PRECINCT 30	473	321	152	253	0	1	0	3	64
EAST CHICAGO PRECINCT 31	1065	757	308	424	1	0	0	30	302
EAST CHICAGO PRECINCT 33	1396	1065	331	861	0	5	1	45	153
EAST CHICAGO PRECINCT 34	715	518	197	359	7	2	0	15	135
EAST CHICAGO PRECINCT 35	994	963	31	917	0	1	0	33	12
EAST CHICAGO PRECINCT 36	1697	1624	73	1511	0	1	0	59	53
GARY	80294	71675	8619	68107	164	241	8	1685	1470
GARY PRECINCT 1-03	1111	1027	84	979	0	4	0	32	12
GARY PRECINCT 1-05	920	788	132	756	0	4	0	23	5
GARY PRECINCT 1-06	681	542	139	508	2	7	0	18	7
GARY PRECINCT 1-07	423	120	303	107	5	0	0	8	0
GARY PRECINCT 1-08	741	660	81	629	0	1	0	21	9
GARY PRECINCT 1-10	971	937	34	883	0	14	0	21	19
GARY PRECINCT 1-11	1049	996	53	955	4	3	0	15	19
GARY PRECINCT 1-13	674	605	69	568	1	5	0	9	22
GARY PRECINCT 1-14	530	501	29	465	0	1	0	8	27
GARY PRECINCT 1-16	1148	1052	96	980	1	1	0	40	30
GARY PRECINCT 1-18	915	808	107	753	1	5	0	33	16
GARY PRECINCT 1-19	520	432	88	399	2	0	0	15	16
GARY PRECINCT 1-20	1056	895	161	822	7	5	0	46	15
GARY PRECINCT 1-21	605	471	134	440	7	3	0	13	8

Attachment C: Demographic Study Pre-Consolidation

7/31/2018

GARY PRECINCT 1-22	595	466	129	444	3	0	1	15	3
GARY PRECINCT 1-23	414	384	30	369	3	0	0	10	2
GARY PRECINCT 1-24	646	162	484	138	10	2	0	7	5
GARY PRECINCT 1-25	573	399	174	352	7	1	0	33	6
GARY PRECINCT 2-01	793	741	52	672	1	6	0	13	49
GARY PRECINCT 2-03	804	773	31	760	1	0	0	8	4
GARY PRECINCT 2-04	664	655	9	620	0	6	0	22	7
GARY PRECINCT 2-05	351	348	3	335	2	0	0	10	1
GARY PRECINCT 2-07	666	620	46	609	0	1	0	6	4
GARY PRECINCT 2-10	1101	1055	46	981	7	0	0	23	44
GARY PRECINCT 2-11	1157	1142	15	1117	0	5	0	15	5
GARY PRECINCT 2-12	581	580	1	571	0	3	0	5	1
GARY PRECINCT 2-13	496	488	8	478	1	1	0	3	5
GARY PRECINCT 2-14	430	418	12	391	0	0	0	11	16
GARY PRECINCT 2-15	788	746	42	664	2	1	0	37	42
GARY PRECINCT 2-16	669	667	2	648	0	1	0	11	7
GARY PRECINCT 2-17	760	750	10	737	0	0	0	10	3
GARY PRECINCT 2-18	597	592	5	585	0	1	0	6	0
GARY PRECINCT 2-20	1265	1173	92	1112	0	5	0	18	38
GARY PRECINCT 2-21	642	605	37	577	0	2	1	15	10
GARY PRECINCT 2-24	973	839	134	717	3	1	1	34	83
GARY PRECINCT 2-25	706	665	41	638	0	5	0	11	11
GARY PRECINCT 3-03	1458	259	1199	44	3	14	1	57	140
GARY PRECINCT 3-04	544	541	3	538	0	0	0	2	1
GARY PRECINCT 3-06	551	541	10	519	0	1	0	9	12
GARY PRECINCT 3-07	671	663	8	654	2	3	0	4	0
GARY PRECINCT 3-09	646	638	8	624	0	0	0	13	1
GARY PRECINCT 3-10	398	393	5	372	2	1	0	16	2
GARY PRECINCT 3-11	623	614	9	595	0	0	0	17	2
GARY PRECINCT 3-13	555	545	10	516	0	0	0	12	17
GARY PRECINCT 3-14	673	243	430	145	1	4	0	39	54
GARY PRECINCT 3-15	665	660	5	648	1	0	0	11	0
GARY PRECINCT 3-16	789	781	8	773	0	1	0	7	0
GARY PRECINCT 3-17	664	663	1	653	0	0	0	9	1
GARY PRECINCT 3-18	501	500	1	485	0	7	0	7	1
GARY PRECINCT 3-19	999	968	31	898	5	1	0	27	37
GARY PRECINCT 3-21	851	816	35	793	0	0	0	10	13
GARY PRECINCT 3-24	1067	1064	3	1045	0	0	0	18	1
GARY PRECINCT 3-25	427	422	5	410	0	0	0	12	0
GARY PRECINCT 3-26	1594	1580	14	1538	0	3	0	31	8
GARY PRECINCT 4-01	813	804	9	791	0	1	0	12	0
GARY PRECINCT 4-02	610	604	6	591	1	1	0	7	4
GARY PRECINCT 4-03	804	798	6	780	0	3	0	14	1
GARY PRECINCT 4-04	219	215	4	206	0	3	0	5	1
GARY PRECINCT 4-05	588	581	7	573	0	5	0	3	0

Attachment C: Demographic Study Pre-Consolidation

7/31/2018

GARY PRECINCT 4-08	827	788	39	782	1	0	0	0	2	3
GARY PRECINCT 4-09	492	484	8	469	0	2	0	0	9	4
GARY PRECINCT 4-10	750	743	7	737	0	2	0	0	4	0
GARY PRECINCT 4-13	892	884	8	878	0	1	0	0	2	3
GARY PRECINCT 4-14	709	689	20	669	0	3	0	0	9	8
GARY PRECINCT 4-15	496	486	10	486	0	0	0	0	0	0
GARY PRECINCT 4-16	900	894	6	882	0	0	0	0	11	1
GARY PRECINCT 4-17	711	707	4	696	0	0	0	0	10	1
GARY PRECINCT 4-19	384	378	6	376	0	0	0	0	2	0
GARY PRECINCT 4-20	459	457	2	451	0	1	0	0	4	1
GARY PRECINCT 4-22	697	695	2	671	0	6	0	0	17	1
GARY PRECINCT 4-23	1002	977	25	946	0	0	0	0	30	1
GARY PRECINCT 4-25	1153	1118	35	1083	2	7	0	0	12	14
GARY PRECINCT 4-27	874	860	14	836	0	2	0	0	7	15
GARY PRECINCT 4-28	98	37	61	21	0	0	0	0	1	15
GARY PRECINCT 5-01	862	836	26	801	2	4	0	0	22	7
GARY PRECINCT 5-02	972	911	61	887	2	1	1	1	11	9
GARY PRECINCT 5-03	880	104	776	17	0	6	0	0	19	62
GARY PRECINCT 5-04	1903	359	1544	150	22	13	2	2	80	92
GARY PRECINCT 5-05	717	714	3	695	0	3	0	0	14	2
GARY PRECINCT 5-06	1087	1070	17	1051	0	2	0	0	16	1
GARY PRECINCT 5-07	677	620	57	569	0	1	0	0	18	32
GARY PRECINCT 5-12	285	278	7	257	0	0	0	0	9	9
GARY PRECINCT 5-13	1094	1073	21	1050	2	1	0	0	13	7
GARY PRECINCT 5-14	750	718	32	680	2	0	0	0	16	20
GARY PRECINCT 5-16	940	926	14	899	0	4	0	0	20	3
GARY PRECINCT 5-19	522	505	17	470	0	0	0	0	15	20
GARY PRECINCT 5-20	952	896	56	869	0	1	0	0	8	18
GARY PRECINCT 5-21	466	436	30	399	0	1	0	0	15	21
GARY PRECINCT 5-23	668	650	18	618	2	6	0	0	19	5
GARY PRECINCT 5-24NV	1	1	0	1	0	0	0	0	0	0
GARY PRECINCT 6-02	746	685	61	654	0	1	0	0	13	17
GARY PRECINCT 6-03	779	744	35	718	0	2	0	0	19	5
GARY PRECINCT 6-04	587	566	21	535	1	4	0	0	13	13
GARY PRECINCT 6-05	614	585	29	545	13	0	0	0	22	5
GARY PRECINCT 6-07	1346	1235	111	1151	0	6	0	0	48	30
GARY PRECINCT 6-09	581	541	40	502	0	1	0	0	15	23
GARY PRECINCT 6-10	1075	976	99	931	6	7	0	0	17	15
GARY PRECINCT 6-12	1191	1114	77	1071	4	1	0	0	3	35
GARY PRECINCT 6-14	1387	1304	83	1244	0	2	0	0	35	23
GARY PRECINCT 6-15	677	597	80	562	9	1	0	0	19	6
GARY PRECINCT 6-16	659	610	49	571	5	3	0	0	17	14
GARY PRECINCT 6-17	753	707	46	683	0	0	0	0	11	13
GARY PRECINCT 6-18	1062	981	81	949	2	1	0	0	16	13
GARY PRECINCT 6-19	850	789	61	739	0	1	0	0	37	12

Attachment C: Demographic Study Pre-Consolidation

7/31/2018

GARY PRECINCT 6-20	530	467	63	453	0	0	0	1	8	5
GARY PRECINCT 6-21	512	485	27	453	1	2	0	0	10	19
GRIFFITH	16893	4096	12797	2848	133	45	5	413	652	8
GRIFFITH PRECINCT 01	861	111	750	26	19	1	0	0	8	57
GRIFFITH PRECINCT 02	1736	1338	398	1241	0	3	1	1	54	39
GRIFFITH PRECINCT 03	1373	215	1158	91	8	2	1	38	75	21
GRIFFITH PRECINCT 04	888	104	784	50	3	0	0	30	18	30
GRIFFITH PRECINCT 05	889	89	800	30	7	4	0	18	24	17
GRIFFITH PRECINCT 06	901	61	840	8	7	5	0	15	22	19
GRIFFITH PRECINCT 07	1025	71	954	25	5	4	0	14	45	63
GRIFFITH PRECINCT 08	822	66	756	24	9	0	0	24	62	39
GRIFFITH PRECINCT 09	1038	70	968	5	6	0	0	36	40	26
GRIFFITH PRECINCT 10	1244	153	1091	33	16	6	0	35	73	24
GRIFFITH PRECINCT 11	1135	142	993	45	6	5	0	24	36	107
GRIFFITH PRECINCT 12	1503	1183	320	1092	6	10	0	18	68	88
GRIFFITH PRECINCT 13	858	165	693	66	19	0	0	11	93	117
GRIFFITH PRECINCT 14	828	89	739	25	12	1	0	37	247	106
GRIFFITH PRECINCT 15	785	178	607	75	0	7	0	31	202	146
GRIFFITH PRECINCT 16	909	54	855	11	10	1	0	37	188	192
GRIFFITH PRECINCT 17	28	4	24	1	0	0	0	108	503	135
GRIFFITH PRECINCT 18	70	3	67	0	0	3	0	32	135	274
HAMMOND	80830	32846	47984	18224	804	411	24	2660	10723	0
HAMMOND PRECINCT 1-01	1038	235	803	48	5	11	2	21	148	92
HAMMOND PRECINCT 1-02	781	173	608	59	7	0	0	15	36	221
HAMMOND PRECINCT 1-03	1746	319	1427	37	20	5	0	36	107	68
HAMMOND PRECINCT 1-05	797	148	649	21	2	0	0	11	8	88
HAMMOND PRECINCT 1-06	694	89	605	8	2	0	0	8	117	93
HAMMOND PRECINCT 1-07	762	137	625	32	2	7	0	12	247	106
HAMMOND PRECINCT 1-08	770	176	594	33	4	1	5	35	202	146
HAMMOND PRECINCT 1-09	675	135	540	21	3	6	0	8	188	192
HAMMOND PRECINCT 1-10	1594	357	1237	61	8	4	0	37	247	106
HAMMOND PRECINCT 1-12	868	215	653	62	0	16	0	31	106	146
HAMMOND PRECINCT 1-13	896	309	587	67	2	3	0	35	202	146
HAMMOND PRECINCT 1-14	704	183	521	25	4	0	0	8	188	192
HAMMOND PRECINCT 1-15	916	342	574	105	6	9	0	34	188	192
HAMMOND PRECINCT 1-16	1108	311	797	74	12	1	0	32	192	106
HAMMOND PRECINCT 2-03	2457	900	1557	265	1	23	0	108	503	135
HAMMOND PRECINCT 2-04	668	441	227	274	0	0	0	32	135	274
HAMMOND PRECINCT 2-05	1078	487	591	164	0	1	0	48	15	20
HAMMOND PRECINCT 2-06	1188	923	265	881	3	4	0	15	22	56
HAMMOND PRECINCT 2-08	783	387	396	306	2	1	0	40	242	321
HAMMOND PRECINCT 2-10	1047	408	639	125	0	1	0	47	70	320
HAMMOND PRECINCT 2-11	1487	578	909	185	6	19	0	70	320	201
HAMMOND PRECINCT 2-12	1479	674	805	268	2	14	0	35	201	0
HAMMOND PRECINCT 2-13	983	461	522	220	2	3	0	35	201	0

Attachment C: Demographic Study Pre-Consolidation

7/31/2018

HAMMOND PRECINCT 2-14	1043	601	442	338	3	2	2	37	219
HAMMOND PRECINCT 2-15	875	405	470	208	2	3	0	37	155
HAMMOND PRECINCT 2-16	668	386	282	204	0	10	0	47	125
HAMMOND PRECINCT 3-03	1919	1106	813	802	16	6	2	84	196
HAMMOND PRECINCT 3-04	1747	1039	708	682	3	16	0	78	260
HAMMOND PRECINCT 3-05	1419	1080	339	821	2	9	1	46	201
HAMMOND PRECINCT 3-06	821	715	106	612	0	5	0	20	78
HAMMOND PRECINCT 3-07	701	639	62	592	0	0	0	18	29
HAMMOND PRECINCT 3-09	1143	669	474	367	6	4	0	49	243
HAMMOND PRECINCT 3-10	506	457	49	450	0	0	0	0	7
HAMMOND PRECINCT 3-11	545	508	37	492	0	3	0	5	8
HAMMOND PRECINCT 3-12	503	443	60	429	0	0	0	8	6
HAMMOND PRECINCT 3-13	936	501	435	237	11	7	0	41	205
HAMMOND PRECINCT 3-14	502	479	23	452	0	0	0	3	24
HAMMOND PRECINCT 3-15	1008	348	660	175	3	5	0	34	131
HAMMOND PRECINCT 3-16	1167	691	476	518	65	6	0	36	66
HAMMOND PRECINCT 4-01	663	216	447	119	3	0	0	10	84
HAMMOND PRECINCT 4-02	823	308	515	123	2	8	0	33	142
HAMMOND PRECINCT 4-03	910	387	523	228	2	7	0	36	114
HAMMOND PRECINCT 4-05	1128	458	670	271	7	11	3	46	120
HAMMOND PRECINCT 4-06	761	232	529	122	12	10	1	15	72
HAMMOND PRECINCT 4-07	1040	404	636	165	2	8	0	48	181
HAMMOND PRECINCT 4-08	584	163	421	80	2	4	0	15	62
HAMMOND PRECINCT 4-09	902	269	633	107	4	9	0	24	125
HAMMOND PRECINCT 4-10	785	272	513	122	2	5	0	20	123
HAMMOND PRECINCT 4-11	1048	483	565	264	1	8	0	35	175
HAMMOND PRECINCT 4-12	1458	396	1062	160	9	1	0	50	176
HAMMOND PRECINCT 4-14	987	351	636	194	6	2	0	35	114
HAMMOND PRECINCT 4-16	1387	905	482	729	3	2	0	78	93
HAMMOND PRECINCT 4-18	1637	409	1228	170	8	11	5	74	141
HAMMOND PRECINCT 5-01	855	336	519	211	1	8	0	14	102
HAMMOND PRECINCT 5-04	1222	506	716	325	40	2	0	31	108
HAMMOND PRECINCT 5-05	781	250	531	138	27	1	0	15	69
HAMMOND PRECINCT 5-07	929	281	648	140	47	0	0	23	71
HAMMOND PRECINCT 5-08	843	301	542	175	2	0	0	34	90
HAMMOND PRECINCT 5-09	777	278	499	186	2	1	0	27	62
HAMMOND PRECINCT 5-10	946	230	716	76	2	14	0	20	118
HAMMOND PRECINCT 5-11	599	153	446	82	16	3	0	24	28
HAMMOND PRECINCT 5-12	1387	628	759	272	223	3	0	47	83
HAMMOND PRECINCT 5-13	885	247	638	78	33	2	0	28	106
HAMMOND PRECINCT 5-14	1511	379	1132	146	7	6	1	48	171
HAMMOND PRECINCT 5-15	959	303	656	97	4	5	0	34	163
HAMMOND PRECINCT 5-17	1402	470	932	278	11	6	1	39	135
HAMMOND PRECINCT 6-01	960	280	680	84	7	2	0	35	152
HAMMOND PRECINCT 6-02	617	168	449	61	3	2	0	19	83

Attachment C: Demographic Study Pre-Consolidation

7/31/2018

HAMMOND PRECINCT 6-04	1090	311	719	119	9	4	0	55	124
HAMMOND PRECINCT 6-05	1049	312	737	126	2	12	0	18	154
HAMMOND PRECINCT 6-06	599	184	415	66	3	3	0	11	101
HAMMOND PRECINCT 6-07	1211	437	774	250	23	8	0	31	125
HAMMOND PRECINCT 6-08	898	331	567	105	7	8	1	40	170
HAMMOND PRECINCT 6-09	1177	410	767	185	7	13	0	45	160
HAMMOND PRECINCT 6-10	979	233	746	107	2	3	0	18	103
HAMMOND PRECINCT 6-12	1271	367	904	157	14	5	0	46	145
HAMMOND PRECINCT 6-13	1822	1212	610	935	32	1	0	89	155
HAMMOND PRECINCT 6-14	819	261	558	148	4	8	0	29	72
HAMMOND PRECINCT 6-15	1167	270	897	103	9	0	0	47	111
HIGHLAND	23727	2700	21027	997	380	49	1	474	799
HIGHLAND PRECINCT 01	802	80	722	23	16	1	0	10	30
HIGHLAND PRECINCT 02	698	88	610	19	3	8	0	31	27
HIGHLAND PRECINCT 03	815	83	732	16	10	1	0	8	48
HIGHLAND PRECINCT 04	1072	108	964	27	14	2	0	20	45
HIGHLAND PRECINCT 05	1394	139	1255	38	32	1	0	26	42
HIGHLAND PRECINCT 06	747	82	665	7	7	0	0	18	50
HIGHLAND PRECINCT 07	688	52	636	14	4	0	0	6	28
HIGHLAND PRECINCT 08	1150	91	1059	34	11	1	0	18	27
HIGHLAND PRECINCT 09	981	78	903	22	5	0	0	28	23
HIGHLAND PRECINCT 10	838	52	786	7	4	5	0	11	25
HIGHLAND PRECINCT 11	836	55	781	2	8	1	0	17	27
HIGHLAND PRECINCT 12	1288	212	1076	115	12	0	0	22	63
HIGHLAND PRECINCT 13	723	28	695	2	4	4	1	12	5
HIGHLAND PRECINCT 15	746	30	716	8	4	0	0	7	11
HIGHLAND PRECINCT 16	947	95	852	16	1	1	0	36	41
HIGHLAND PRECINCT 17	746	51	695	17	2	0	0	9	23
HIGHLAND PRECINCT 18	656	127	529	61	19	1	0	27	19
HIGHLAND PRECINCT 19	941	81	860	15	9	4	0	7	46
HIGHLAND PRECINCT 20	1007	62	945	8	11	0	0	10	33
HIGHLAND PRECINCT 21	751	49	702	4	10	0	0	7	28
HIGHLAND PRECINCT 22	694	54	640	7	14	6	0	13	14
HIGHLAND PRECINCT 23	1552	124	1428	10	13	9	0	47	45
HIGHLAND PRECINCT 24	930	69	861	8	16	0	0	14	31
HIGHLAND PRECINCT 25	1164	487	677	340	69	0	0	44	34
HIGHLAND PRECINCT 26	1561	323	1238	177	82	4	0	26	34
HOBART	29080	4277	24803	2028	299	107	4	686	1153
HOBART PRECINCT 01	924	40	884	1	0	8	0	16	15
HOBART PRECINCT 02	1202	231	971	109	16	8	0	36	62
HOBART PRECINCT 03	1151	65	1086	31	4	0	0	12	18
HOBART PRECINCT 04	932	77	855	18	9	3	0	28	19
HOBART PRECINCT 05	1210	433	777	278	38	12	0	19	86
HOBART PRECINCT 06	1168	363	805	229	25	3	0	29	77
HOBART PRECINCT 07	811	27	784	11	2	1	1	3	9

Attachment C: Demographic Study Pre-Consolidation

7/31/2018

HOBART PRECINCT 08	774	93	681	5	4	9	0	23	52
HOBART PRECINCT 09	962	118	844	41	4	6	0	19	48
HOBART PRECINCT 10	1270	87	1183	22	1	5	0	15	44
HOBART PRECINCT 11	1012	64	948	11	8	2	0	20	23
HOBART PRECINCT 12	1122	93	1029	15	2	3	0	16	57
HOBART PRECINCT 13	691	26	665	1	5	0	0	5	15
HOBART PRECINCT 14	1007	179	828	99	4	4	0	29	43
HOBART PRECINCT 15	1296	80	1216	34	0	0	1	10	35
HOBART PRECINCT 16	672	79	593	15	2	3	0	29	30
HOBART PRECINCT 17	759	65	694	13	1	4	0	11	36
HOBART PRECINCT 18	850	56	794	7	11	1	0	12	25
HOBART PRECINCT 19	1149	261	888	148	8	2	0	52	51
HOBART PRECINCT 20	759	70	689	16	2	1	0	19	32
HOBART PRECINCT 21	701	96	605	33	7	1	0	25	30
HOBART PRECINCT 22	897	91	806	26	3	2	0	23	37
HOBART PRECINCT 23	969	94	875	11	6	9	0	35	33
HOBART PRECINCT 24	1779	389	1390	227	21	2	0	48	91
HOBART PRECINCT 25	1091	180	911	71	17	6	0	37	49
HOBART PRECINCT 26	1574	688	886	492	74	8	1	46	67
HOBART PRECINCT 27	1292	114	1178	37	11	2	0	35	29
HOBART PRECINCT 29	1056	118	938	27	14	2	1	34	40
HOBART TOWNSHIP	2642	505	2137	72	18	18	1	130	266
HOBART TOWNSHIP 05	1202	201	1001	17	14	11	1	52	106
HOBART TOWNSHIP 07	833	185	648	28	1	3	0	55	98
HOBART TOWNSHIP 08	479	66	413	5	3	2	0	16	40
HOBART TOWNSHIP 09	128	53	75	22	0	2	0	7	22
LAKE MICHIGAN	0	0	0	0	0	0	0	0	0
LAKE MICHIGAN NV	0	0	0	0	0	0	0	0	0
LAKE STATION	12646	2558	10088	455	40	66	3	516	1478
LAKE STATION PRECINCT 01	1298	245	1053	22	0	8	0	52	163
LAKE STATION PRECINCT 01A	59	15	44	0	0	0	0	0	15
LAKE STATION PRECINCT 02	1284	176	1108	21	6	10	0	45	94
LAKE STATION PRECINCT 03	818	128	690	36	9	2	0	26	55
LAKE STATION PRECINCT 04	327	56	271	14	1	0	0	4	37
LAKE STATION PRECINCT 05	369	69	300	12	0	0	0	7	50
LAKE STATION PRECINCT 05A	289	61	228	10	0	2	0	8	41
LAKE STATION PRECINCT 06	700	113	587	21	2	4	0	24	57
LAKE STATION PRECINCT 07	1130	237	893	50	3	9	0	58	122
LAKE STATION PRECINCT 07A	708	131	577	14	0	1	0	28	88
LAKE STATION PRECINCT 08	842	180	662	29	3	9	0	33	106
LAKE STATION PRECINCT 08A	30	6	24	4	0	1	0	0	1
LAKE STATION PRECINCT 09	788	219	569	44	1	1	2	26	145
LAKE STATION PRECINCT 10	837	302	535	39	2	1	0	52	208
LAKE STATION PRECINCT 11	1164	224	940	44	3	8	0	63	106
LAKE STATION PRECINCT 12	974	179	795	44	9	9	1	39	77

Attachment C: Demographic Study Pre-Consolidation

7/31/2018

LAKE STATION PRECINCT 13	1029	217	812	51	1	1	0	51	113
LAKE STATION PRECINCT 14NW	0	0	0	0	0	0	0	0	0
MERRILLVILLE	35246	18908	16338	15673	421	70	6	1111	1627
MERRILLVILLE PRECINCT 01	1114	716	398	659	7	0	0	29	21
MERRILLVILLE PRECINCT 02	1051	175	876	98	6	1	0	26	44
MERRILLVILLE PRECINCT 03	1433	549	884	421	28	7	0	30	63
MERRILLVILLE PRECINCT 04	1732	811	921	682	28	2	0	40	59
MERRILLVILLE PRECINCT 05	1002	395	607	281	3	3	0	42	66
MERRILLVILLE PRECINCT 06	772	245	527	145	5	2	0	41	52
MERRILLVILLE PRECINCT 07	1029	600	429	506	8	2	0	18	66
MERRILLVILLE PRECINCT 08	917	410	507	346	4	2	0	27	31
MERRILLVILLE PRECINCT 09	1243	961	282	901	19	0	0	11	30
MERRILLVILLE PRECINCT 10	1125	873	252	797	2	4	0	27	43
MERRILLVILLE PRECINCT 11	895	719	176	661	3	1	0	30	24
MERRILLVILLE PRECINCT 12	1235	420	815	303	16	3	0	39	59
MERRILLVILLE PRECINCT 13	1746	1221	525	1057	45	5	0	55	59
MERRILLVILLE PRECINCT 14	884	305	579	207	13	11	0	35	39
MERRILLVILLE PRECINCT 15	880	426	454	351	2	2	0	37	34
MERRILLVILLE PRECINCT 16	1417	1027	390	824	41	1	0	64	97
MERRILLVILLE PRECINCT 17	606	162	444	87	9	0	0	27	39
MERRILLVILLE PRECINCT 18	1114	1000	114	926	4	1	0	14	55
MERRILLVILLE PRECINCT 19	1140	851	289	751	10	2	0	43	45
MERRILLVILLE PRECINCT 21	938	315	623	177	6	2	0	65	65
MERRILLVILLE PRECINCT 22	1622	1196	426	1083	22	6	0	29	56
MERRILLVILLE PRECINCT 23	1076	452	624	343	8	1	0	42	58
MERRILLVILLE PRECINCT 24	816	69	747	34	3	0	0	14	18
MERRILLVILLE PRECINCT 25	715	335	380	289	3	2	0	26	15
MERRILLVILLE PRECINCT 26	385	239	146	205	7	0	0	7	20
MERRILLVILLE PRECINCT 26A	623	369	254	274	3	0	5	25	62
MERRILLVILLE PRECINCT 27	912	638	274	548	9	0	0	36	45
MERRILLVILLE PRECINCT 28	1374	956	418	764	13	4	0	47	128
MERRILLVILLE PRECINCT 29	1055	628	427	539	1	0	0	54	34
MERRILLVILLE PRECINCT 30	741	235	506	129	14	0	0	45	47
MERRILLVILLE PRECINCT 31	552	137	415	77	2	0	0	24	34
MERRILLVILLE PRECINCT 32	701	252	449	214	9	0	0	4	25
MERRILLVILLE PRECINCT 33	1626	828	798	662	47	5	0	40	74
MERRILLVILLE PRECINCT 34	775	393	382	332	21	1	1	18	20
MUNSTER	23603	3395	20208	821	1377	47	3	415	732
MUNSTER PRECINCT 01	866	190	676	116	12	0	0	18	44
MUNSTER PRECINCT 02	1794	270	1524	54	113	8	0	45	50
MUNSTER PRECINCT 03	761	117	644	38	11	1	0	21	46
MUNSTER PRECINCT 04	777	142	635	25	57	8	0	19	33
MUNSTER PRECINCT 05	1025	142	883	40	19	3	0	24	56
MUNSTER PRECINCT 06	1056	179	877	68	21	4	0	27	59
MUNSTER PRECINCT 07	741	107	634	47	31	0	0	7	22

Attachment C: Demographic Study Pre-Consolidation

7/31/2018

MUNSTER PRECINCT 08	631	41	590	1	15	0	0	2	23
MUNSTER PRECINCT 09	967	91	876	30	27	0	0	10	24
MUNSTER PRECINCT 10	666	60	606	13	8	1	0	7	31
MUNSTER PRECINCT 11	908	81	827	9	20	0	0	17	35
MUNSTER PRECINCT 12	723	55	668	3	25	0	1	9	17
MUNSTER PRECINCT 13	1049	130	919	13	82	0	0	23	12
MUNSTER PRECINCT 14	959	98	861	27	39	2	0	13	17
MUNSTER PRECINCT 15	872	86	786	7	20	3	0	13	43
MUNSTER PRECINCT 16	824	86	738	12	40	0	0	8	26
MUNSTER PRECINCT 17	729	73	656	20	10	0	0	6	37
MUNSTER PRECINCT 18	1156	132	1024	43	53	2	0	13	21
MUNSTER PRECINCT 19	923	117	806	13	57	1	1	17	28
MUNSTER PRECINCT 20	959	141	818	42	62	0	0	9	28
MUNSTER PRECINCT 21	816	135	681	29	71	1	0	8	26
MUNSTER PRECINCT 22	1408	295	1113	57	193	3	0	23	19
MUNSTER PRECINCT 23	535	55	480	8	19	1	0	16	11
MUNSTER PRECINCT 24	1489	420	1069	68	274	7	0	50	21
MUNSTER PRECINCT 25	969	152	817	38	98	2	1	10	3
NEW CHICAGO	2570	100	2470	11	14	3	0	30	42
HANOVER TOWNSHIP PRECINCT 01	1580	38	1542	3	5	3	0	12	15
HANOVER TOWNSHIP PRECINCT 02	990	62	928	8	9	0	0	18	27
ROSS TOWNSHIP	224	26	198	12	1	6	0	2	5
ROSS TOWNSHIP PRECINCT 20	224	26	198	12	1	6	0	2	5
SCHERERVILLE	29417	3860	25557	1591	824	55	3	520	867
SCHERERVILLE PRECINCT 01	932	76	856	9	20	2	0	16	29
SCHERERVILLE PRECINCT 02	1076	80	996	27	12	0	1	15	25
SCHERERVILLE PRECINCT 04	1647	344	1303	146	46	9	0	29	114
SCHERERVILLE PRECINCT 05	704	30	674	1	7	0	0	5	17
SCHERERVILLE PRECINCT 06	1029	90	939	34	13	1	0	17	25
SCHERERVILLE PRECINCT 07	1017	70	947	7	9	3	0	19	32
SCHERERVILLE PRECINCT 08	811	75	736	32	11	0	0	12	20
SCHERERVILLE PRECINCT 09	911	69	842	20	18	1	0	13	17
SCHERERVILLE PRECINCT 10	1025	216	809	98	30	1	0	49	38
SCHERERVILLE PRECINCT 11	791	98	693	40	8	0	0	27	23
SCHERERVILLE PRECINCT 12	957	314	643	189	32	2	0	25	66
SCHERERVILLE PRECINCT 13	920	86	834	26	15	0	0	10	35
SCHERERVILLE PRECINCT 14	1506	100	1406	9	16	6	1	29	39
SCHERERVILLE PRECINCT 15	1003	136	867	63	44	0	0	18	11
SCHERERVILLE PRECINCT 16	1033	85	948	23	25	1	0	11	25
SCHERERVILLE PRECINCT 17	1159	92	1067	19	13	0	0	9	51
SCHERERVILLE PRECINCT 18	1235	76	1159	23	28	2	0	12	11
SCHERERVILLE PRECINCT 19	842	57	785	25	11	1	0	8	12
SCHERERVILLE PRECINCT 20	1453	501	952	327	50	11	1	46	66
SCHERERVILLE PRECINCT 21	672	31	641	2	5	0	0	7	17
SCHERERVILLE PRECINCT 22	1235	245	990	133	42	1	0	33	36

Attachment C: Demographic Study Pre-Consolidation

7/31/2018

SCHERVILLE PRECINCT 23	760	69	691	22	19	2	0	2	24
SCHERVILLE PRECINCT 24	1007	94	913	41	5	1	0	19	28
SCHERVILLE PRECINCT 26	950	75	875	19	25	2	0	5	24
SCHERVILLE PRECINCT 27	1023	172	851	36	112	0	0	19	5
SCHERVILLE PRECINCT 28	1281	138	1143	69	21	3	0	33	12
SCHERVILLE PRECINCT 32	1388	231	1157	89	65	5	0	20	52
SCHERVILLE PRECINCT 33	1050	210	840	62	122	1	0	12	13
ST JOHN	15261	978	14283	199	191	19	10	191	368
ST JOHN TOWN PRECINCT 01	981	52	929	11	6	1	0	4	30
ST JOHN TOWN PRECINCT 02	547	20	527	1	1	0	0	8	10
ST JOHN TOWN PRECINCT 03	1045	70	975	11	12	6	0	17	24
ST JOHN TOWN PRECINCT 04	1228	53	1175	6	14	0	0	5	28
ST JOHN TOWN PRECINCT 05	547	78	469	34	26	0	0	10	8
ST JOHN TOWN PRECINCT 06	1254	36	1218	3	4	2	0	7	20
ST JOHN TOWN PRECINCT 07	784	105	679	25	28	0	0	14	38
ST JOHN TOWN PRECINCT 08	827	55	772	6	14	5	0	14	16
ST JOHN TOWN PRECINCT 09	841	74	767	10	8	0	6	16	34
ST JOHN TOWN PRECINCT 10	425	25	400	5	10	0	0	9	1
ST JOHN TOWN PRECINCT 11	1026	45	981	11	1	1	0	10	22
ST JOHN TOWN PRECINCT 12	488	51	437	9	8	0	0	11	23
ST JOHN TOWN PRECINCT 13	179	6	173	0	0	0	0	3	3
ST JOHN TOWN PRECINCT 14	904	51	853	17	10	1	0	10	13
ST JOHN TOWN PRECINCT 15	1566	118	1448	27	26	2	4	19	40
ST JOHN TOWN PRECINCT 16	1735	82	1653	11	17	1	0	15	38
ST JOHN TOWN PRECINCT 17	818	51	767	12	4	0	0	16	19
ST JOHN TOWN PRECINCT 18	66	6	60	0	2	0	0	3	1
ST JOHN TOWNSHIP	10521	974	9547	204	105	24	4	208	429
ST JOHN TOWNSHIP PRECINCT 01	918	69	849	15	10	1	0	20	23
ST JOHN TOWNSHIP PRECINCT 02	1440	68	1372	4	6	1	0	16	41
ST JOHN TOWNSHIP PRECINCT 03	1317	155	1162	61	17	3	0	39	35
ST JOHN TOWNSHIP PRECINCT 04	1015	82	933	10	25	2	0	14	31
ST JOHN TOWNSHIP PRECINCT 05	506	11	495	2	2	2	2	2	1
ST JOHN TOWNSHIP PRECINCT 06	886	206	680	28	20	8	1	47	102
ST JOHN TOWNSHIP PRECINCT 07	1334	88	1246	16	10	3	0	26	33
ST JOHN TOWNSHIP PRECINCT 08	1670	106	1564	14	7	0	0	19	66
ST JOHN TOWNSHIP PRECINCT 09	1435	189	1246	54	8	4	1	25	97
WEST CREEK TOWNSHIP	7126	250	6876	37	25	17	0	89	82
WEST CREEK TOWNSHIP PRECINCT 01	809	31	778	2	1	2	0	14	12
WEST CREEK TOWNSHIP PRECINCT 01A	277	8	269	0	3	3	0	2	0
WEST CREEK TOWNSHIP PRECINCT 02	1297	49	1248	8	3	0	0	20	18
WEST CREEK TOWNSHIP PRECINCT 03	1701	66	1635	3	10	2	0	21	30
WEST CREEK TOWNSHIP PRECINCT 04	1249	31	1218	3	1	9	0	14	4
WEST CREEK TOWNSHIP PRECINCT 05	447	14	433	0	4	0	0	4	6
WEST CREEK TOWNSHIP PRECINCT 06	1346	51	1295	21	3	1	0	14	12
WHITING	4997	1186	3811	174	34	37	0	158	783

Attachment C: Demographic Study Pre-Consolidation

7/31/2018

WHITING PRECINCT 01	851	195	656	29	15	2	0	29	120
WHITING PRECINCT 02	820	135	685	24	2	10	0	23	76
WHITING PRECINCT 03	843	193	650	46	4	14	0	26	103
WHITING PRECINCT 04	856	223	633	26	1	2	0	29	165
WHITING PRECINCT 05	839	194	645	40	7	2	0	23	122
WHITING PRECINCT 06	788	246	542	9	5	7	0	28	197
WINFIELD	10827	938	9889	231	202	28	5	193	279
WINFIELD TOWNSHIP PRECINCT 01	1294	208	1086	65	61	6	0	23	53
WINFIELD TOWNSHIP PRECINCT 02	948	65	883	4	7	1	4	16	33
WINFIELD TOWNSHIP PRECINCT 03	810	56	754	5	7	0	0	20	24
WINFIELD TOWNSHIP PRECINCT 04	460	30	430	10	2	1	0	6	11
WINFIELD TOWNSHIP PRECINCT 05	846	65	781	18	6	6	0	18	17
WINFIELD TOWNSHIP PRECINCT 06	836	61	775	21	8	0	0	15	17
WINFIELD TOWNSHIP PRECINCT 07	1735	89	1646	5	10	1	0	40	33
WINFIELD TOWNSHIP PRECINCT 08	1141	72	1069	25	17	3	0	10	17
WINFIELD TOWNSHIP PRECINCT 09	1494	224	1270	68	71	10	1	32	42
WINFIELD TOWNSHIP PRECINCT 10	1263	68	1195	10	13	0	0	13	32
Grand Total	499773	176908	322865	128343	6190	1633	108	11741	28893

Attachment D: Lake County Precinct Consolidation Cost Savings

7/31/2018

City/Town/Township	Current Precinct Count	Average PCT Payroll & Rent	Current Cost	Consolidated Precinct Count	Average PCT Payroll & Rent2	Consolidated Precinct Cost	Savings
Gary	105	\$690.00	\$72,450.00	51	\$690.00	\$35,190.00	\$37,260.00
Hammond	79	\$690.00	\$54,510.00	46	\$690.00	\$31,740.00	\$22,770.00
Merrillville	34	\$690.00	\$23,460.00	25	\$690.00	\$17,250.00	\$6,210.00
Crown Point	30	\$690.00	\$20,700.00	22	\$690.00	\$15,180.00	\$5,520.00
Hobart	28	\$690.00	\$19,320.00	21	\$690.00	\$14,490.00	\$4,830.00
Schererville	28	\$690.00	\$19,320.00	21	\$690.00	\$14,490.00	\$4,830.00
Munster	25	\$690.00	\$17,250.00	20	\$690.00	\$13,800.00	\$3,450.00
Highland	25	\$690.00	\$17,250.00	18	\$690.00	\$12,420.00	\$4,830.00
East Chicago	31	\$690.00	\$21,390.00	17	\$690.00	\$11,730.00	\$9,660.00
St. John	17	\$690.00	\$11,730.00	15	\$690.00	\$10,350.00	\$1,380.00
Griffith	18	\$690.00	\$12,420.00	14	\$690.00	\$9,660.00	\$2,760.00
Lake Station	17	\$690.00	\$11,730.00	13	\$690.00	\$8,970.00	\$2,760.00
Dyer	15	\$690.00	\$10,350.00	12	\$690.00	\$8,280.00	\$2,070.00
Cedar Lake	10	\$690.00	\$6,900.00	9	\$690.00	\$6,210.00	\$690.00
Cedar Creek Twn	9	\$690.00	\$6,210.00	8	\$690.00	\$5,520.00	\$690.00
St. John Twn	9	\$690.00	\$6,210.00	8	\$690.00	\$5,520.00	\$690.00
Winfield Twn	10	\$690.00	\$6,900.00	8	\$690.00	\$5,520.00	\$1,380.00
Calumet Twn	6	\$690.00	\$4,140.00	5	\$690.00	\$3,450.00	\$690.00
Center Town	6	\$690.00	\$4,140.00	5	\$690.00	\$3,450.00	\$690.00
West Creek Twn	7	\$690.00	\$4,830.00	5	\$690.00	\$3,450.00	\$1,380.00
Hobart Twn	4	\$690.00	\$2,760.00	3	\$690.00	\$2,070.00	\$690.00
Whiting	6	\$690.00	\$4,140.00	3	\$690.00	\$2,070.00	\$2,070.00
Hanover Twn	2	\$690.00	\$1,380.00	2	\$690.00	\$1,380.00	\$0.00
Eagle Creek Twn	1	\$690.00	\$690.00	1	\$690.00	\$690.00	\$0.00
Ross Twn	1	\$690.00	\$690.00	1	\$690.00	\$690.00	\$0.00
Grand Total			\$360,870.00			\$243,570.00	\$117,300.00
4-Year Election Savings (Based on 6 elections)							\$703,800.00

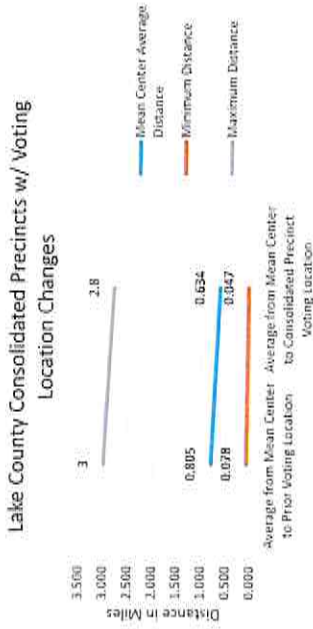
Attachment E: Omitted Precincts Under 600 Voters 7/31/2018

Omitted Precincts:	# of Active Voters (Ad Hoc Data)
CEDAR CREEK TOWNSHIP PRECINCT 04	562
CEDAR LAKE PRECINCT 08	75
CEDAR LAKE PRECINCT 09	4
CEDAR LAKE PRECINCT 10	0
CROWN POINT PRECINCT 26	150
EAST CHICAGO PRECINCT 17	599
GARY PRECINCT 4-28	39
GARY PRECINCT 5-03	329
GARY PRECINCT 5-13	569
GARY PRECINCT 5-16	404
GRIFFITH PRECINCT 04	589
GRIFFITH PRECINCT 05	581
GRIFFITH PRECINCT 07	147
GRIFFITH PRECINCT 15	449
GRIFFITH PRECINCT 17	18
GRIFFITH PRECINCT 18	147
HAMMOND PRECINCT 2-14	352
HAMMOND PRECINCT 6-01	558
HIGHLAND PRECINCT 21	555
HOBART PRECINCT 09	527
HOBART PRECINCT 16	449
HOBART PRECINCT 20	514
HOBART PRECINCT 21	487
HOBART TOWNSHIP 08	216
HOBART TOWNSHIP 09	49
LAKE MICHIGAN NV	0
LAKE STATION PRECINCT 01A	29
LAKE STATION PRECINCT 05	439
LAKE STATION PRECINCT 05A	201
LAKE STATION PRECINCT 07A	293
LAKE STATION PRECINCT 08A	9
LAKE STATION PRECINCT 10	451
MERRILLVILLE PRECINCT 06	449
MERRILLVILLE PRECINCT 08	558
MERRILLVILLE PRECINCT 14	511
MERRILLVILLE PRECINCT 15	585
MERRILLVILLE PRECINCT 17	359
MERRILLVILLE PRECINCT 18	582
MERRILLVILLE PRECINCT 21	524
MERRILLVILLE PRECINCT 24	589
MERRILLVILLE PRECINCT 25	508
MERRILLVILLE PRECINCT 26	565
MERRILLVILLE PRECINCT 26A	364
MERRILLVILLE PRECINCT 27	506
MERRILLVILLE PRECINCT 30	417
MERRILLVILLE PRECINCT 31	389
MERRILLVILLE PRECINCT 32	419
MUNSTER PRECINCT 15	595
ROSS TOWNSHIP PRECINCT 20	147
SCHERERVILLE PRECINCT 01	565
SCHERERVILLE PRECINCT 05	493
SCHERERVILLE PRECINCT 07	559
SCHERERVILLE PRECINCT 08	483
SCHERERVILLE PRECINCT 09	585
SCHERERVILLE PRECINCT 21	546
ST JOHN TOWN PRECINCT 08	568
ST JOHN TOWN PRECINCT 13	65
ST JOHN TOWNSHIP PRECINCT 03	360
ST JOHN TOWNSHIP PRECINCT 04	529
ST JOHN TOWNSHIP PRECINCT 05	375
WEST CREEK TOWNSHIP PRECINCT 01A	146
WINFIELD TOWNSHIP PRECINCT 03	512

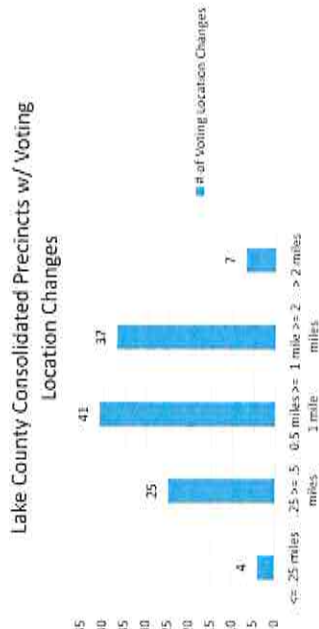
Attachment F: Voting Location Travel Distance Study

7/31/2018

Distance Measurement	Miles
Average from Mean Center to Prior Voting Location	0.805
Minimum	0.078
Maximum	3
Average from Mean Center to Consolidated Precinct Voting Location	0.634
Minimum	0.047
Maximum	2.8
Average from Prior Voting Location to New Voting Location	1.002
Minimum	0.000
Maximum	3.8



Voting Location Distance Changes	# of Voting Location Changes
<= .25 miles	4
.25 >= .5 miles	25
.5 miles >= 1 mile	41
1 mile >= 2 miles	37
> 2 miles	7
Total	114



Attachment G: Population Change Summary

7/31/2018

City	ACS 2016 Pop. Estimates	Census 2010 Pop.	Percent of Pop. Change
East Chicago	28961	29698	-2.481648596
Gary	77858	80294	-3.033850599
Hammond	78349	80830	-3.069404924
Highland	23107	23727	-2.613056855
Munster	23103	23603	-2.118374783
Whiting	4870	4997	-2.541524915
Rest of County*	253450	252856	0.234916316

* Covers all areas outside of the listed Cities

Attachment H: Report Discrepancy Log

7/31/2018

ID	Precinct Name	Category	Description of Discrepancy	Exhibit A (Voter # PCT)	Exhibit B (Payroll Local/kt)	Source Data			Ad Hoc Report Lake County Report	Ad Hoc Report Lake County Report	Ad Hoc Report Lake County Report	Ad Hoc Report Lake County Report	Ad Hoc Report Lake County Report
						Ad Hoc Report Lake County Report	Ad Hoc Report Lake County Report	Ad Hoc Report Lake County Report					
1	CL-10	Exhibit A Missing Precinct Data	CL-10 is not listed in Exhibit A but is a precinct referenced within the consolidation report	CL-10 is missing	CL-10 is included			CL-10 is included					
2	LS-5A	Exhibit A Missing Precinct Data	LS-5A is missing in Exhibit A	LS-5A is missing	LS-5A is included			LS-5A is included					
3	LS-8A	Exhibit A Missing Precinct Data	LS-8A is missing in Exhibit A	LS-8A is missing	LS-8A is included			LS-8A is included					
4	LS-12	Exhibit B Missing Precinct Data	LS-12 is missing in Exhibit B	LS-12 is included	LS-12 is missing			LS-12 is included					
5	CCT	Graphical	Graphical lists CCT as Center Town and Graphical lists CCT as Cedar Creek Twp The data for CCT appears to be merging with G-11. For example, EC-11 merging with G3-09 and EC-10 and EC-10 merging with G3-11. This is the only instance of cross town/tpy precinct consolidations referenced within the report. Based on the vote data, the report should reference G3-09 to be merged with G3-10 and G3-11 (instead of EC-11). Validation Approach - No EC precincts are included in G-11 in other documentation. - There is no EC-10 referenced as a precinct in Exhibits A, B, C.		CCT listed as Center Town			CCT listed as Cedar Creek Twp					
6	G3-08, G3-10, G3-11, EC-10, and EC-31	Consolidation Report	On pg. 5 of the consolidation report, CCT-3 and CC-4 is listed and should include CCT-3 (1589 active voters) and CCT-5 (704 voters) and the active voter total should be 1296 (incorrect)	CCT-3 (842) + CCT-5 (704) is included				CCT-3 (842) + CCT-5 (704) is included					
7	CCT-3 and CCT-5	Consolidation Report	Exhibit B Missing Precinct Data	EC-23-30 is missing	EC-23-30 is included			EC-23-30 is included					
8	EC-23 through EC-30	Payroll Data	EC-23-30 is missing in Exhibit B	EC-23-30 is missing	EC-23-30 is included			EC-23-30 is included					
9	G3-08 through G3-15	Payroll Data	G3-05-G3-15 is missing in Exhibit B	G3-05-G3-15 is missing	G3-05-G3-15 is included			G3-05-G3-15 is included					
10	M-01 through M-10	Payroll Data	M-01-M-10 is missing in Exhibit B	M-01-M-10 is missing	M-01-M-10 is included			M-01-M-10 is included					
11	Giffin	Graphical	Graphical lists 1411 active voters in G-aphic 1 and Graphical 2, after when comparing the new AVG Precinct (11/02/07) size under 1411 of active voters. The new AVG Precinct (11/02/07) size under 1411 of active voters in G-aphic 1 and Graphical 2, after when comparing the new AVG Precinct (11/02/07) size under 1411 of active voters in G-aphic 1 and Graphical 2, after when comparing the new AVG Precinct (11/02/07) size under 1411 of active voters.	711	750			711					
12	Haines Township	Graphical	Graphical lists 995 active voters in G-aphic 1 and Graphical 2, after when comparing the new AVG Precinct (11/02/07) size under 995 of active voters. The new AVG Precinct (11/02/07) size under 995 of active voters in G-aphic 1 and Graphical 2, after when comparing the new AVG Precinct (11/02/07) size under 995 of active voters.	995	993			995					
13	Hobart	Graphical	Graphical lists 680 active voters in G-aphic 1 and Graphical 2, after when comparing the new AVG Precinct (11/02/07) size under 680 of active voters. The new AVG Precinct (11/02/07) size under 680 of active voters in G-aphic 1 and Graphical 2, after when comparing the new AVG Precinct (11/02/07) size under 680 of active voters.	680	681			680					
14	St John Township	Graphical	Graphical lists 834 active voters in G-aphic 1 and Graphical 2, after when comparing the new AVG Precinct (11/02/07) size under 834 of active voters. The new AVG Precinct (11/02/07) size under 834 of active voters in G-aphic 1 and Graphical 2, after when comparing the new AVG Precinct (11/02/07) size under 834 of active voters.	834	843			834					
15	ST JOHN PRECINCT 18	Clarification	The consolidation report (pp6165-17) incorrectly lists 1217 active total voters. The data in Exhibit A lists 1197 active voters. The consolidation report incorrectly lists both MER 30 and MER 31 as having 806 active voters and should be corrected to show MER 30 417 and MER 31 389.	Do not have this as a precinct	Do not have this as a precinct			Do not have this as a precinct					
16	HO-18	Consolidation Report	HO-18 sum total 1197 active voters	HO-18 sum total 1197 active voters	HO-18 (847) and HO-04 (859) are included			HO-18 sum total 1217 active voters					
17	MER 30 and MER 31	Consolidation Report	MER 30 417 and MER 31 389 County's reasoning since there are less than 800 active voters and should have been included in the consolidation report. Additionally, the # in column N is the # of active voters which should be listed.	MER 30 - 417 MER 31 - 389	MER 30 - 417 MER 31 - 389			MER 30 - 866 MER 31 - 926					
18	CEDAR CREEK TOWNSHIP PRECINCT 04	Consolidation Report	County's reasoning since there are less than 800 active voters and should have been included in the consolidation report. Additionally, the # in column N is the # of active voters which should be listed.										
19	CEDAR LAKE PRECINCT 08	Consolidation Report	County's reasoning since there are less than 800 active voters and should have been included in the consolidation report. Additionally, the # in column N is the # of active voters which should be listed.										
20	CEDAR LAKE PRECINCT 09	Consolidation Report	County's reasoning since there are less than 800 active voters and should have been included in the consolidation report. Additionally, the # in column N is the # of active voters which should be listed.										
21	CEDAR LAKE PRECINCT 10	Consolidation Report	County's reasoning since there are less than 800 active voters and should have been included in the consolidation report. Additionally, the # in column N is the # of active voters which should be listed.										

Attachment H: Report Discrepancy Log

7/31/2018

40	HOBBART PRECINCT 21	Consolidation Report	Unlimited from the consolidation report but conflicts with Lake County's reasoning since there are less than 600 active voters and should have been included in the consolidation report. Additionally, the # in column N is the # of active voters which should be listed.	384h	467
41	HOBBART TOWNSHIP 08	Consolidation Report	County's reasoning since there are less than 600 active voters and should have been included in the consolidation report. Additionally, the # in column N is the # of active voters which should be listed.	384h	218
42	HOBBART TOWNSHIP 09	Consolidation Report	Unlimited from the consolidation report but conflicts with Lake County's reasoning since there are less than 600 active voters and should have been included in the consolidation report. Additionally, the # in column N is the # of active voters which should be listed.	384h	49
43	LAKE MICHIGAN NW	Consolidation Report	Unlimited from the consolidation report but conflicts with Lake County's reasoning since there are less than 600 active voters and should have been included in the consolidation report. Additionally, the # in column N is the # of active voters which should be listed.	384h	Non Voting PCT
44	LAKE STATION PRECINCT 01A	Consolidation Report	County's reasoning since there are less than 600 active voters and should have been included in the consolidation report. Additionally, the # in column N is the # of active voters which should be listed.	384h	29
45	LAKE STATION PRECINCT 05	Consolidation Report	Unlimited from the consolidation report but conflicts with Lake County's reasoning since there are less than 600 active voters and should have been included in the consolidation report. Additionally, the # in column N is the # of active voters which should be listed.	384h	459
46	LAKE STATION PRECINCT 05A	Consolidation Report	County's reasoning since there are less than 600 active voters and should have been included in the consolidation report. Additionally, the # in column N is the # of active voters which should be listed.	384h	201
47	LAKE STATION PRECINCT 07A	Consolidation Report	Unlimited from the consolidation report but conflicts with Lake County's reasoning since there are less than 600 active voters and should have been included in the consolidation report. Additionally, the # in column N is the # of active voters which should be listed.	384h	293
48	LAKE STATION PRECINCT 08A	Consolidation Report	County's reasoning since there are less than 600 active voters and should have been included in the consolidation report. Additionally, the # in column N is the # of active voters which should be listed.	384h	9
49	LAKE STATION PRECINCT 10	Consolidation Report	Unlimited from the consolidation report but conflicts with Lake County's reasoning since there are less than 600 active voters and should have been included in the consolidation report. Additionally, the # in column N is the # of active voters which should be listed.	384h	451
50	MERRILLVILLE PRECINCT 06	Consolidation Report	County's reasoning since there are less than 600 active voters and should have been included in the consolidation report. Additionally, the # in column N is the # of active voters which should be listed.	384h	449
51	MERRILLVILLE PRECINCT 08	Consolidation Report	Unlimited from the consolidation report but conflicts with Lake County's reasoning since there are less than 600 active voters and should have been included in the consolidation report. Additionally, the # in column N is the # of active voters which should be listed.	384h	558
52	MERRILLVILLE PRECINCT 14	Consolidation Report	County's reasoning since there are less than 600 active voters and should have been included in the consolidation report. Additionally, the # in column N is the # of active voters which should be listed.	384h	511
53	MERRILLVILLE PRECINCT 15	Consolidation Report	Unlimited from the consolidation report but conflicts with Lake County's reasoning since there are less than 600 active voters and should have been included in the consolidation report. Additionally, the # in column N is the # of active voters which should be listed.	384h	585
54	MERRILLVILLE PRECINCT 17	Consolidation Report	County's reasoning since there are less than 600 active voters and should have been included in the consolidation report. Additionally, the # in column N is the # of active voters which should be listed.	384h	359
55	MERRILLVILLE PRECINCT 18	Consolidation Report	Unlimited from the consolidation report but conflicts with Lake County's reasoning since there are less than 600 active voters and should have been included in the consolidation report. Additionally, the # in column N is the # of active voters which should be listed.	384h	592
56	MERRILLVILLE PRECINCT 21	Consolidation Report	County's reasoning since there are less than 600 active voters and should have been included in the consolidation report. Additionally, the # in column N is the # of active voters which should be listed.	384h	574
57	MERRILLVILLE PRECINCT 24	Consolidation Report	Unlimited from the consolidation report but conflicts with Lake County's reasoning since there are less than 600 active voters and should have been included in the consolidation report. Additionally, the # in column N is the # of active voters which should be listed.	384h	699

Attachment H: Report Discrepancy Log

7/31/2018

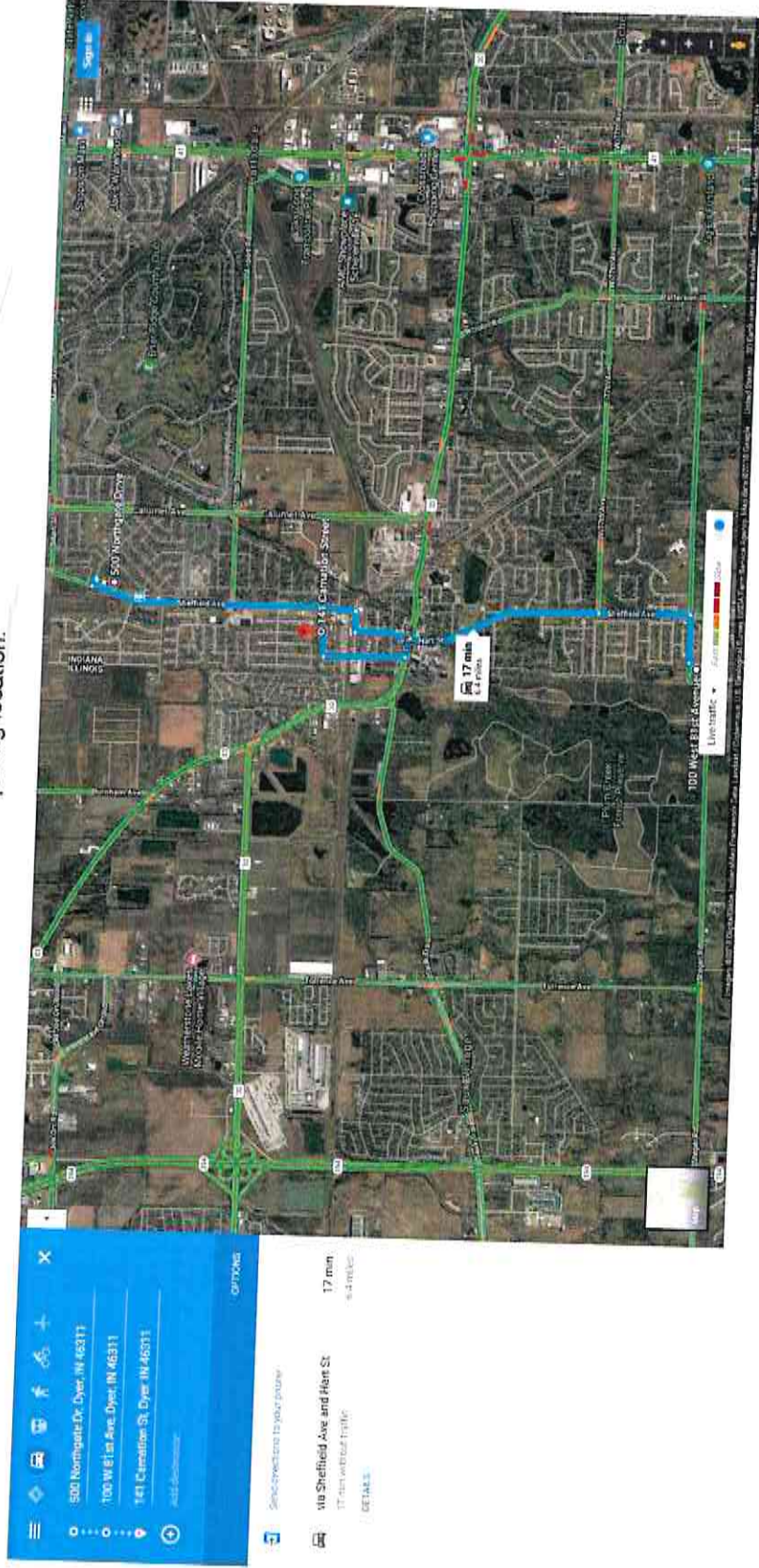
Line #	Township/Precinct	Report Type	Description of Discrepancy	Count	Count	Count	Count	Count	Count	Count	Count
26	ST JOHN TOWNSHIP PRECINCT 04	Consolidation Report	Unrated from the consolidation report but contacts with Lake County's reasoning since there are less than 600 active voters and should have been included in the consolidation report. Additionally, the # in column H is the # of active voters which should be listed.								529
27	ST JOHN TOWNSHIP PRECINCT 05	Consolidation Report	Unrated from the consolidation report but contacts with Lake County's reasoning since there are less than 600 active voters and should have been included in the consolidation report. Additionally, the # in column H is the # of active voters which should be listed.								375
28	WEST CREEK TOWNSHIP PRECINCT 01A	Consolidation Report	Unrated from the consolidation report but contacts with Lake County's reasoning since there are less than 600 active voters and should have been included in the consolidation report. Additionally, the # in column H is the # of active voters which should be listed.								746
29	WINFIELD TOWNSHIP PRECINCT 01	Consolidation Report	Unrated from the consolidation report but contacts with Lake County's reasoning since there are less than 600 active voters and should have been included in the consolidation report. Additionally, the # in column H is the # of active voters which should be listed.								512

Attachment I: Top 5 Longest Distance Polling Location Changes with Satellite View

Monday, July 30, 2018

1. D-11 merged with D-15

Future Polling Location: 500 Northgate Dr, Dyer, IN 46311
Previous Polling Location: FAITH REFORMED CHURCH, 100 W 81st Ave, Dyer, IN 46311
New Mean Center Population Point: 41.5010635850309, -87.5213198464634
Observation: This is the largest difference in a polling location change (3.8 mi) in the Lake County precinct consolidation report. As a result of the precinct consolidation, the new mean center is 1.1 mi closer to the new polling location.



Attachment I: Top 5 Longest Distance Polling Location Changes with Satellite View

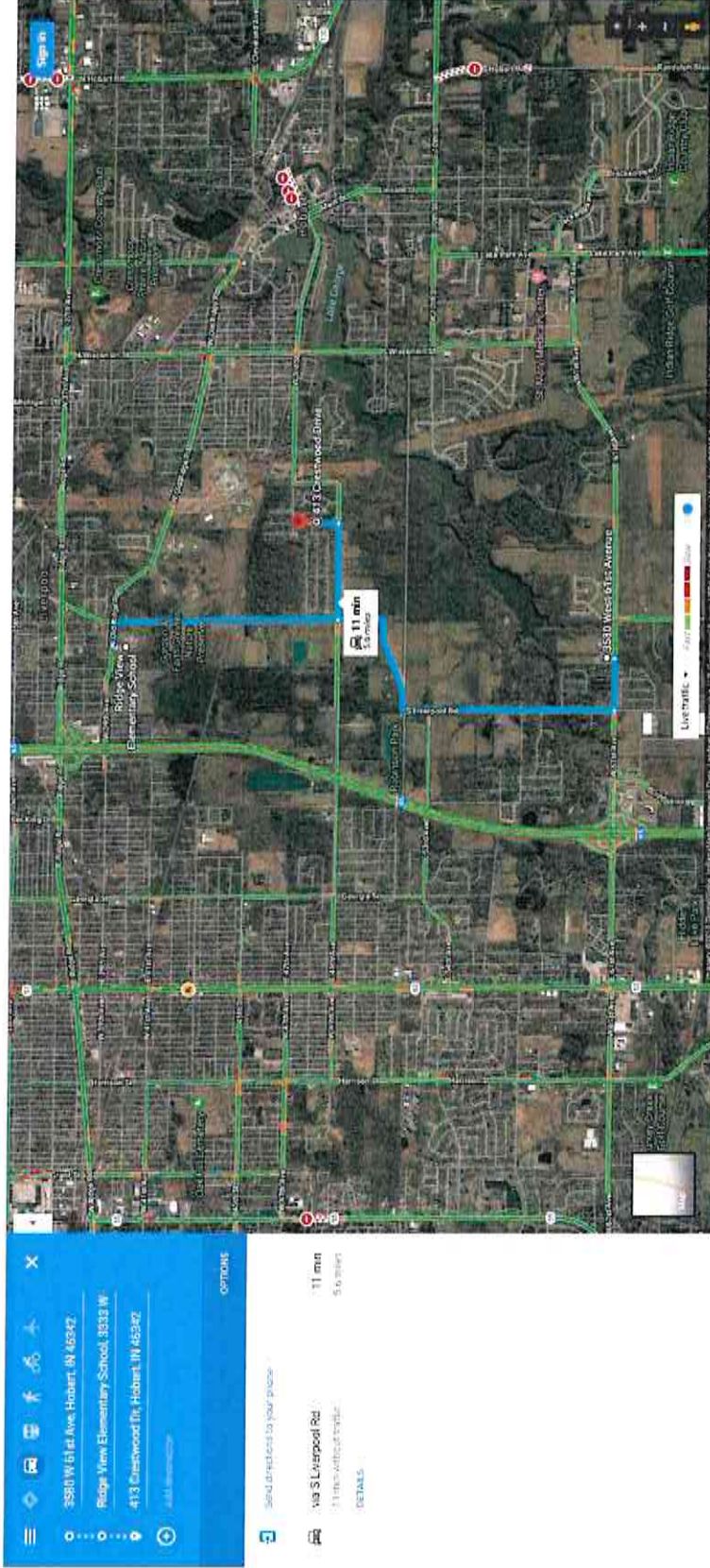
2. HO-22 merged with HO-17

Future Polling Location: 3580 W 61st Ave, Hobart, IN 46342

Previous Polling Location: Ridge View Elementary School 3333 W Old Ridge Rd, Hobart, IN 46342

New Mean Center Population Point: 41.53095542, -87.28671973

Observation: The new polling location is .8 mi further from the mean center than the HO-17 consolidated polling location, but is central in relation to the prior polling location and the new polling location. The new polling location is on the other side of park land, including Gordon & Faith Greiner Nature Preserve, Bur Oak Woods, Robinson Park, Hobart Woodland Trail, Glenwood Park, and Brookview Park.



Monday, July 30, 2018
Attachment I: Top 5 Longest Distance Polling Location Changes with Satellite View

3. G1-03 merged with G1-06

Future Polling Location: 8901 E 5th Ave, Gary, IN 46403

Previous Polling Location: MILLER DUNES POST #279, 6601 Hobart Rd, Gary, IN 46403

New Mean Center Population Point: 41.5999845114639, -87.2381393128877

Observation: The new polling location is .6mi closer to the mean center than the G1 -06 consolidated polling location and is central in relation to the prior polling location and the new polling location. The new polling location is on the other side of park land John Merle Coulter Nature Preserve and the Indiana Dunes.



Attachment I: Top 5 Longest Distance Polling Location Changes with Satellite View

4. SJT-08 merged with SJT-06

Future Polling Location: 9105 W 85th Ave, Schererville, IN 46375

Previous Polling Location: SCHERERVILLE FIRE STATION# 3, 1949 Springvale Dr, Crown Point, IN 46307

New Mean Center Population Point: 41.46084345, -87.41145339

Observation: The new polling location is .3 mi further from the mean center than the SJT-06 consolidated polling location, but is central in relation to the prior polling location and the new polling location.



Monday, July 30, 2018
Attachment I: Top 5 Longest Distance Polling Location Changes with Satellite View

5. G4-22 merged with G4-19 and G4-20

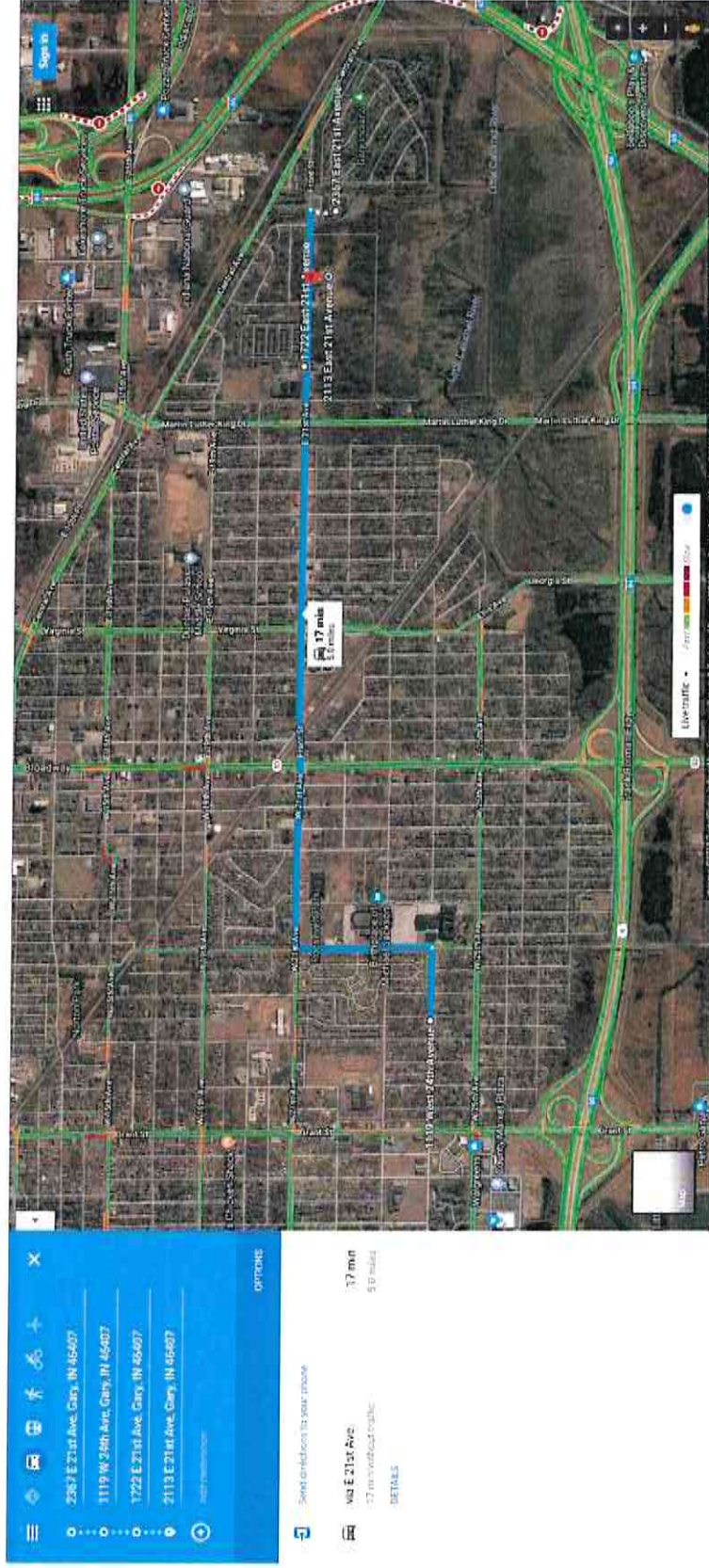
Future Polling Location: 2367 E 21st Ave, Gary, IN 46407

Previous Polling Location (G4-19): IRONWOOD PARK, 1119 W 24th Ave, Gary, IN 46407

Previous Polling Location (G4-20): DORIE MILLER OFFICE, 1722 E 21st Ave, Gary, IN 46407

New Mean Center Population Point: 41.5793656393382, -87.3110688387414

Observation: The new polling location is closer to the mean center population (.2 mi) and only .04 mi from the G4-20 polling location.



Attachment J: Voter Representation Proportion Analysis 7/31/2018

City/Town	Lake County Precinct Consolidation Report Active Voters	Lake County Precinct Consolidation Report Inactive Voters	Lake County Precinct Consolidation Report Grand Total of Voters	Seats Per City/Town	City/Town/District Council Type	# Of Districts/Wards, At-Large Seats	Ratio of Representation to Active Voters	Ratio of Representation to Grand Total
CALUMET TOWNSHIP	3978	341	4319					
CEDAR CREEK TOWNSHIP	7913	466	8379	5	This includes Lowell City city/district councils.	5 Wards for Council Members	1582	1677
CEDAR LAKE	7975	643	8618	7	Town Council	7 Wards	1139	1231
CENTER TOWNSHIP	4519	223	4742					
CROWN POINT	20933	1346	22279	7	Common Council	5 Districts, 2 At-Large Seats	2990	3183
DYER	11545	569	12114	5	Town Council	5 Wards	2309	2423
EAGLE CREEK TOWNSHIP	1111	77	1188					
EAST CHICAGO	15233	2284	17517	9	Common Council	6 Districts, 3 At-Large Seats	1700	1946
GARY	47527	6642	54169	9	City Council	6 Districts, 3 At-Large Seats	5281	6021
GRIFFITH	9952	908	12140	5	Town Council	5 Wards	1990	2279
HAMMOND	43982	4401	48383	9	Common Council	6 Districts, 3 At-Large Seats	4885	5374
HANOVER TOWNSHIP	1992	122	2114					
HIGHLAND	16194	1102	17296	5	Town Council	5 Wards	3238	3459
HOBART	18481	1194	19675	7	Common Council	5 Districts, 2 At-Large Seats	2640	2801
LAKE STATION	6868	480	7348	7	City Council	5 Districts, 2 At-Large Seats	979	1019
MERRILLVILLE	23484	1919	25403	7	Town Council	7 Wards	3302	3572
MUNSTER	17227	1099	18326	5	Town Council	5 Wards	3445	3665
NEW CHICAGO	1439	110	1549	5	Town Council	5 Wards	288	310
ROSS TWN	147	9	156					
SCHERERVILLE	20079	1369	21448	5	Town Council	5 Wards	4016	4290
ST JOHN	12504	478	12982	5	Town Council	3 Wards	2501	2579
ST JOHN TOWNSHIP	6099	375	6474					
WEST CREEK TOWNSHIP	4477	247	4176	3	This includes city/district councils.	3 Wards for Schneider City Council Members At Large	1492	1044
WHITING	2860	261	3121	7	City Council	3 Districts, 2 At-Large Seats	409	445
WINFIELD TOWNSHIP	8001	529	8530	5	This includes city/district councils.	5 Crown Point City Council Members	1600	1706
Grand Total	314500	27194	342426					

Attachment J: Voter Representation Proportion Analysis 7/31/2018

City/Town	SVRS Report (as of 7/11/2018) Active Voters	SVRS Report (as of 7/11/2018) Inactive Voters	SVRS Report (as of 7/11/2018) Grand total of Voters	Seats Per City/Town	City/Town/District Council Type	# Of Districts/Wards, At-Large Seats	Ratio of 1 Representative to Active Voters	Ratio of Representation to Grand Total
CALUMET TOWNSHIP	4024	354	4378					
CEDAR CREEK TOWNSHIP	7991	493	8484	5	This includes city/district councils.	5 Wards for Lowell City Council Members	804	876
CEDAR LAKE	8167	628	8795	7	Town Council	7 Wards	1167	1256
CENTER TOWNSHIP	4617	221	4838					
CROWN POINT	21476	1300	22776	7	Common Council	5 Districts, 2 At-Large Seats	3068	3254
DYER	11679	550	12229	5	Town Council	5 Wards	2336	2446
EAGLE CREEK TOWNSHIP	1144	75	1219					
EAST CHICAGO	15238	2364	17602	9	Common Council	6 Districts, 3 At-Large Seats	1693	1956
GARY	47790	6693	54483	9	City Council	6 Districts, 3 At-Large Seats	5310	6054
GRIFFITH	10629	951	11580	5	Town Council	5 Wards	2126	2316
HAMMOND	44570	4503	49073	9	Common Council	6 Districts, 3 At-Large Seats	4952	5452
HANOVER TOWNSHIP	2060	120	2180					
HIGHLAND	16404	1054	17458	5	Town Council	5 Wards	3281	3497
HOBART	18869	1144	20033	7	Common Council	5 Districts, 2 At-Large Seats	2698	2862
LAKE STATION	6761	466	7227	7	City Council	5 Districts, 2 At-Large Seats	966	1032
MERRILLVILLE	23601	1825	25426	7	Town Council	7 Wards	3372	3623
MUNSTER	17448	1068	18516	5	Town Council	5 Wards	3490	3703
NEW CHICAGO	1450	102	1552	5	Town Council	5 Wards	290	310
ROSS TOWNSHIP	154	8	162					
SCHERERVILLE	20481	1341	21822	5	Town Council	5 Wards	4096	4363
ST JOHN	13049	487	13536	5	Town Council	3 Wards	2610	2707
ST JOHN TOWNSHIP	6149	403	6552					
WEST CREEK TOWNSHIP	4601	244	4845	3	This includes city/district councils.	3 Wards for Schneider City Council Members At Large	959	1043
WHITING	2878	253	3131	7	City Council	3 Districts, 2 At-Large Seats	411	447
WINFIELD TOWNSHIP	8180	511	8691	5	This includes city/district councils.	5 Crown Point City Council Members	1636	1738
Grand Total	319430	27158	346588					

Attachment J: Voter Representation Proportion Analysis 7/31/2018

City/Town	Active Voter Difference Between Lake County Precinct Consolidation Report & SVRS Report	Inactive Voter Difference Between Lake County Precinct Consolidation Report & SVRS Report	Grand Total Voter Variance Between Lake County Precinct Consolidation Report & SVRS Report	Comparison of Representation to Active Voters	Comparison of Representation to Grand Total of Voters
CALUMET TOWNSHIP	46	13	59	0	0
CEDAR CREEK TOWNSHIP	78	27	105	-778	-801
CEDAR LAKE	192	-15	177	28	25
CENTER TOWNSHIP	543	-46	497	0	0
CROWN POINT	98	-2	96	78	71
DYER	134	-19	115	27	23
EAGLE CREEK TOWNSHIP	5	80	85	0	0
EAST CHICAGO	33	-2	31	-7	10
GARY	243	51	294	29	33
GRIFFITH	134	55	189	136	37
HAMMOND	608	102	710	67	78
HANOVER TOWNSHIP	210	-48	162	0	0
HIGHLAND	408	-50	358	43	38
HOBART	11	-8	3	58	61
LAKE STATION	68	-2	66	-13	13
MERRILLVILLE	316	-2	324	70	51
MUNSTER	221	-31	190	45	38
NEW CHICAGO	481	-60	421	2	0
ROSS TOWNSHIP	7	-1	6	0	0
SCHERERVILLE	402	-28	374	80	73
ST JOHN	630	9	639	109	128
ST JOHN TOWNSHIP	50	28	78	0	0
WEST CREEK TOWNSHIP	16	-8	10	-533	-1
WHITING	124	-10	114	2	2
WINFIELD TOWNSHIP	179	-18	84	36	32
Grand Total				0	0

Green	Increase in voters per representative
Red	Decrease in voters per representative

EXHIBIT A**Lake County Precincts Eligible for Consolidation Summary**

City/Township	Current Precinct Count	Consolidations
Eagle Creek Township	1	0
Winfield Township	10	2
Hanover Township	2	0
Cedar Creek Township	9	1
Dyer	15	3
Hammond	79	33
Schererville	28	7
Whiting	6	3
Crown Point	30	8
Gary	105	54
Merrillville	34	9
Center Township	6	1
Highland	25	7
East Chicago	31	14
West Creek Township	7	2
Cedar Lake	10	1
Hobart	28	7
Munster	25	5
St. John	17	2
Calumet Township	6	1
St. John Township	9	1
Griffith	18	4
Lake Station	17	4
Hobart Township	4	1
Ross Township	1	0
Total:	523	170

EXHIBIT A**Lake County Precincts Eligible for Consolidation Summary**

City/Township	Current Precinct Count	Consolidations
Eagle Creek Township	1	0
Winfield Township	10	2
Hanover Township	2	0
Cedar Creek Township	9	1
Dyer	15	3
Hammond	79	33
Schererville	28	7
Whiting	6	3
Crown Point	30	8
Gary	105	54
Merrillville	34	9
Center Township	6	1
Highland	25	7
East Chicago	31	14
West Creek Township	7	2
Cedar Lake	10	1
Hobart	28	7
Munster	25	5
St. John	17	2
Calumet Township	6	1
St. John Township	9	1
Griffith	18	4
Lake Station	17	4
Hobart Township	4	1
Ross Township	1	0
Total:	523	170