



United States Department of Agriculture
National Agricultural Statistics Service

September Crop Production
Executive Summary

Lance Honig, Chief
Crops Branch



Contents

Field Crops	Fruit & Nuts	Specialty Crops
Corn	Navel Oranges (CA)	Tobacco
Soybeans	Hazelnuts	Sugarbeets
Cotton	Walnuts	Sugarcane
Rice		Dry Edible Peas
Peanuts		Lentils
Sorghum		Austrian Winter Peas



Survey Overview

	Ag Yield	Objective Yield
Survey Type	Farmer Reported	Field Measurement
Crops Included	Field Crops	Corn, Cotton, and Soybeans
Sample Size	9,820	4,952
Collection Period	Aug 30 – Sept 7	Aug 25 – Sept 1



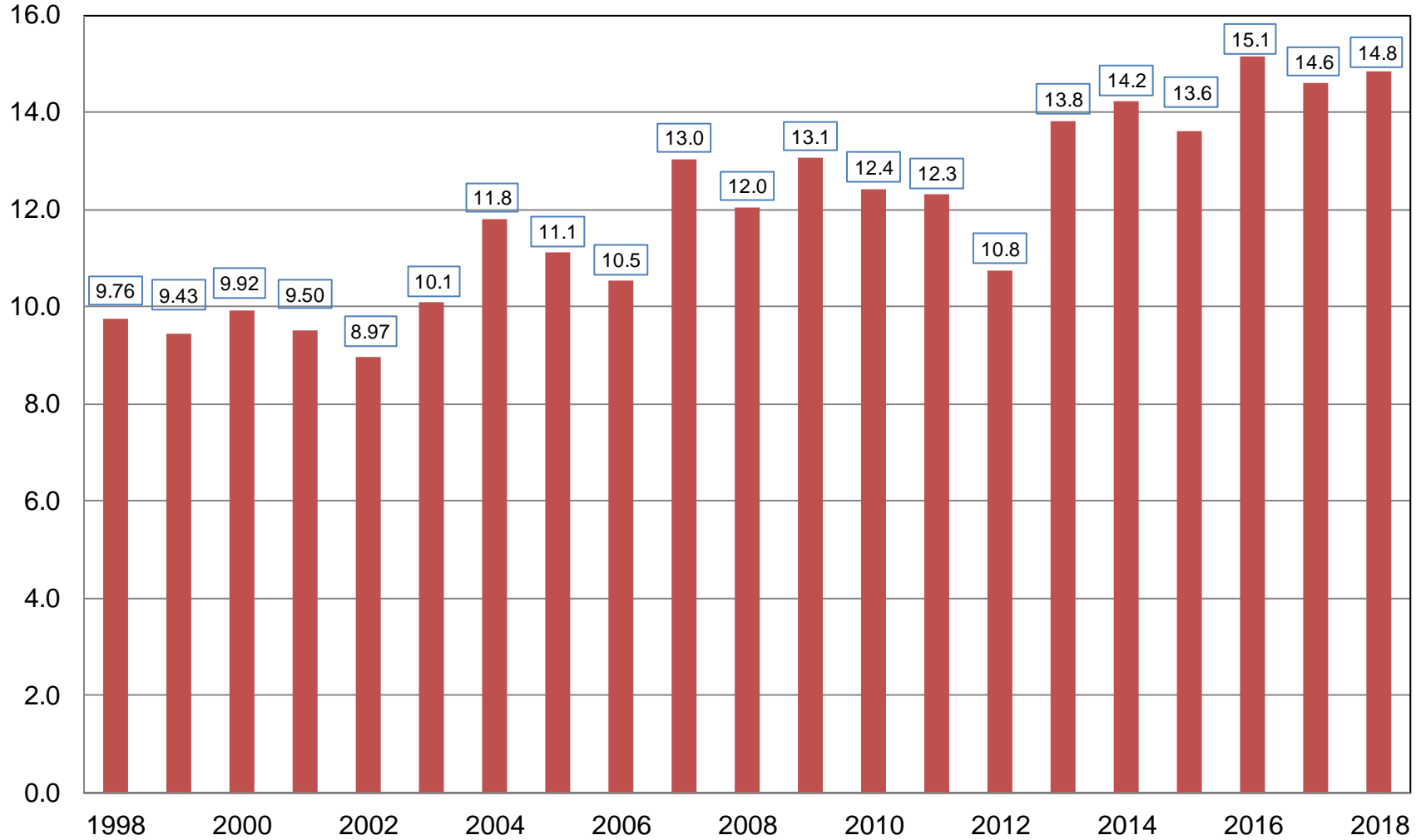
September 2018 Crop Production

Crop	Unit	September 2018	% Change From Previous Forecast	% Change From Previous Season
Corn				
Planted	Mil Ac	89.1	NC	-1.2
Harvested	Mil Ac	81.8	NC	-1.1
Yield	Bu/Ac	181.3	+1.6	+2.7
Production	Bil Bu	14.8	+1.6	+1.5



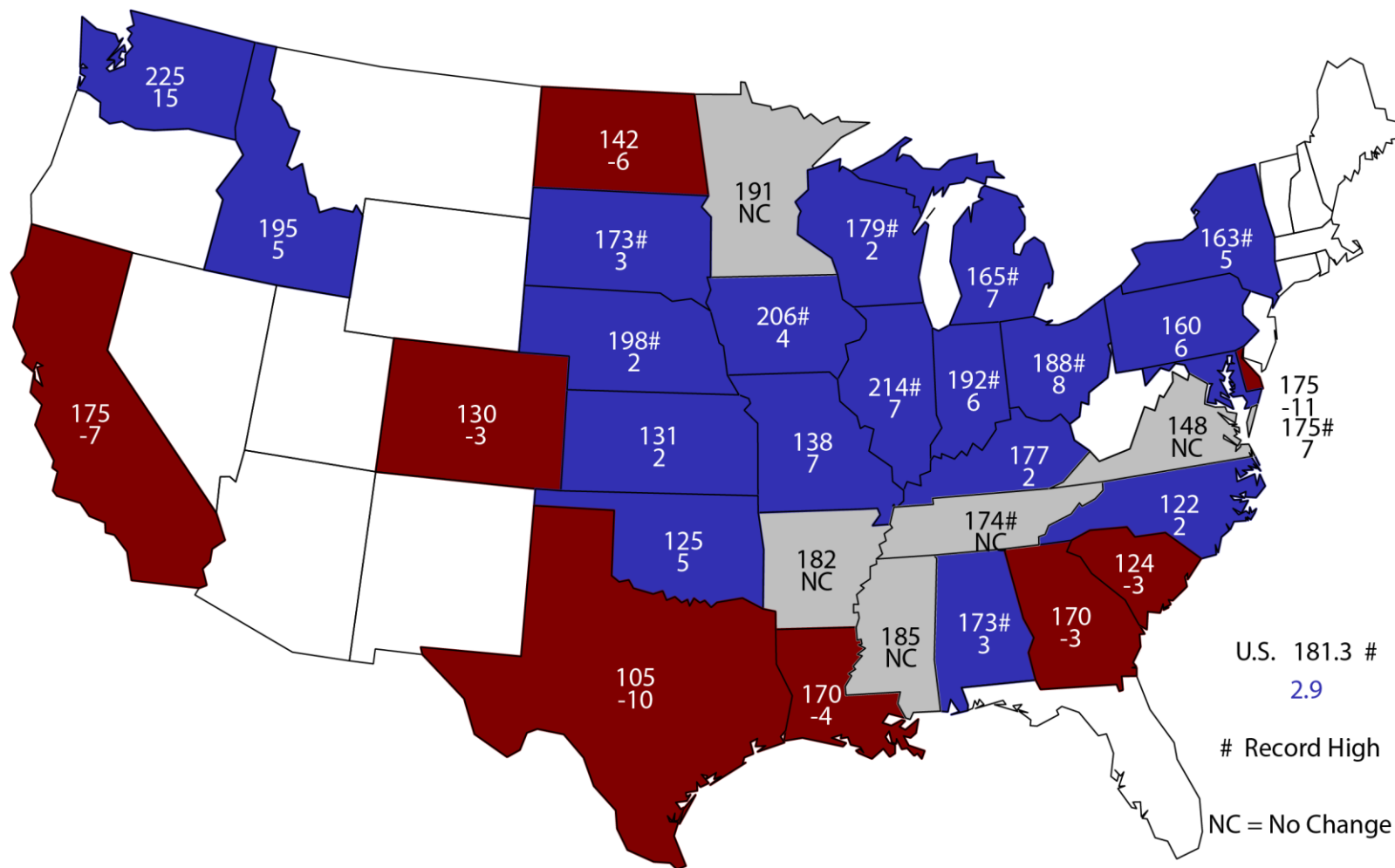
Corn for Grain Production United States

Billion Bushels



September, 2018 Corn Yield

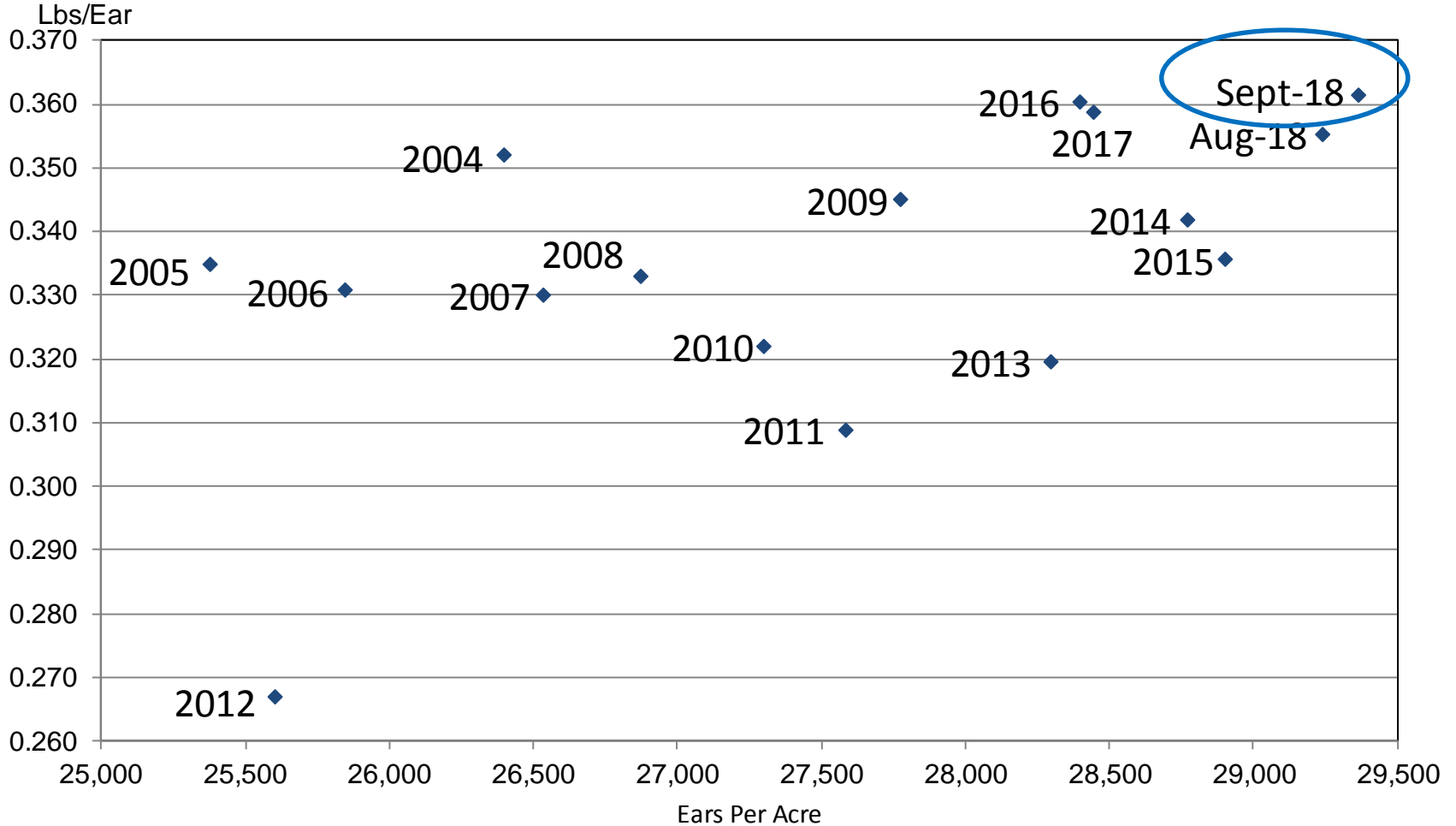
Bushels and Change From Previous Forecast



U.S. 181.3 #
 2.9
 # Record High
 NC = No Change

Corn Objective Yield Region

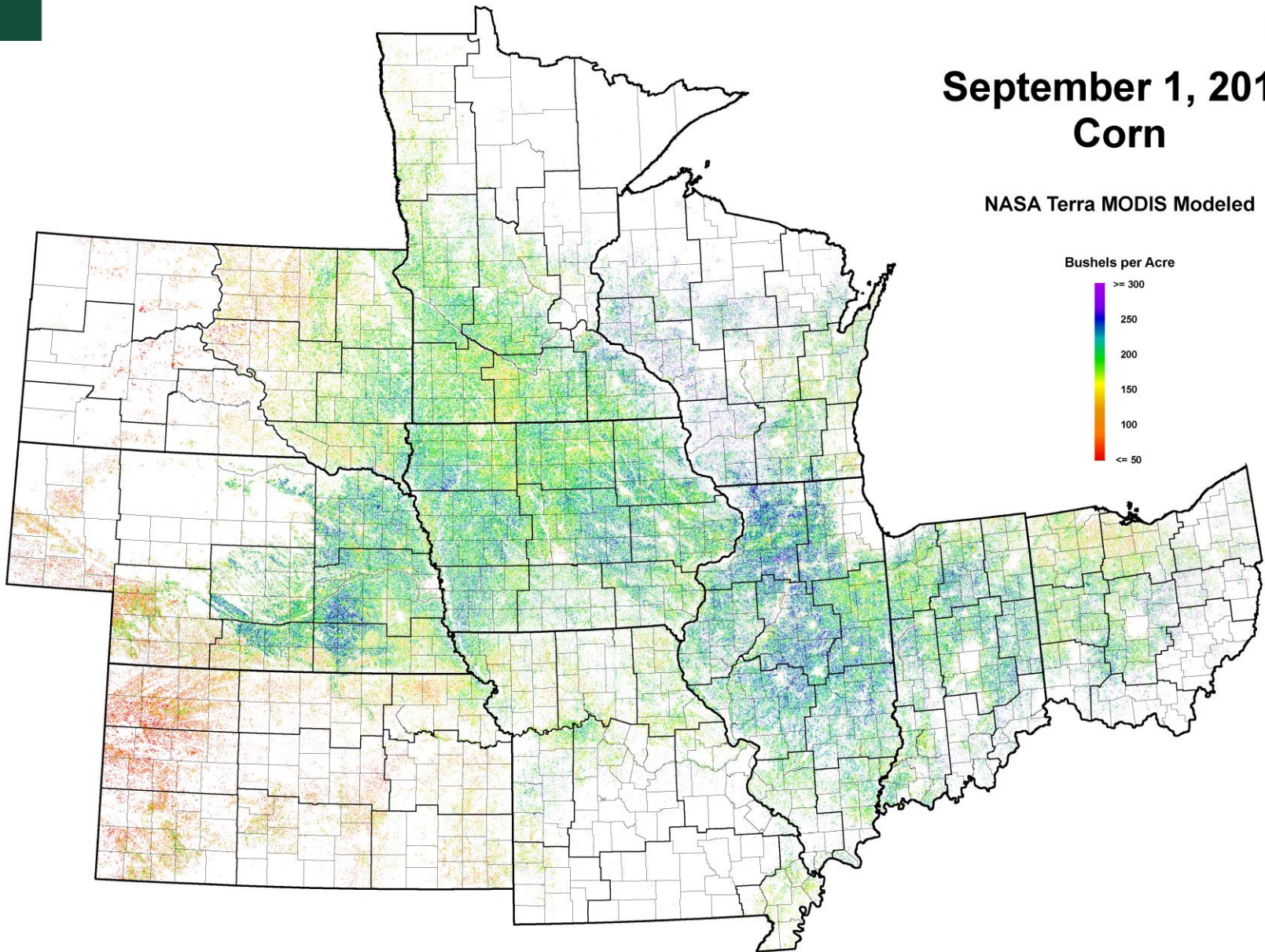
Ears Per Acre vs. Implied Ear Weight



Implied Ear Weight = (Published Yield * 56) / Ears

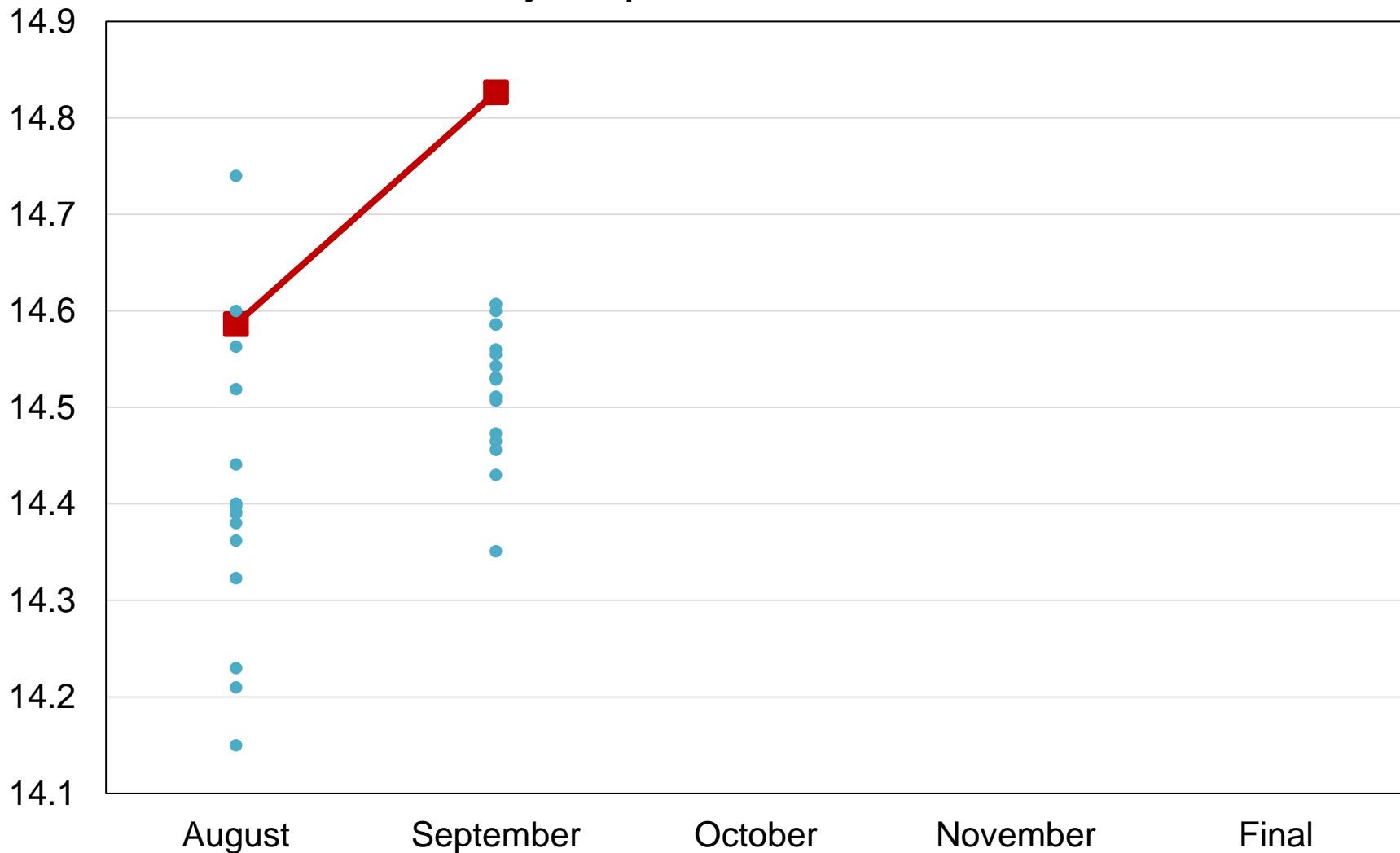
September 1, 2018 Corn

NASA Terra MODIS Modeled



2018 United States Corn Production Industry Expectations vs NASS

Billion Bushels



■ NASS Forecast
 ● Individual Industry Expectation



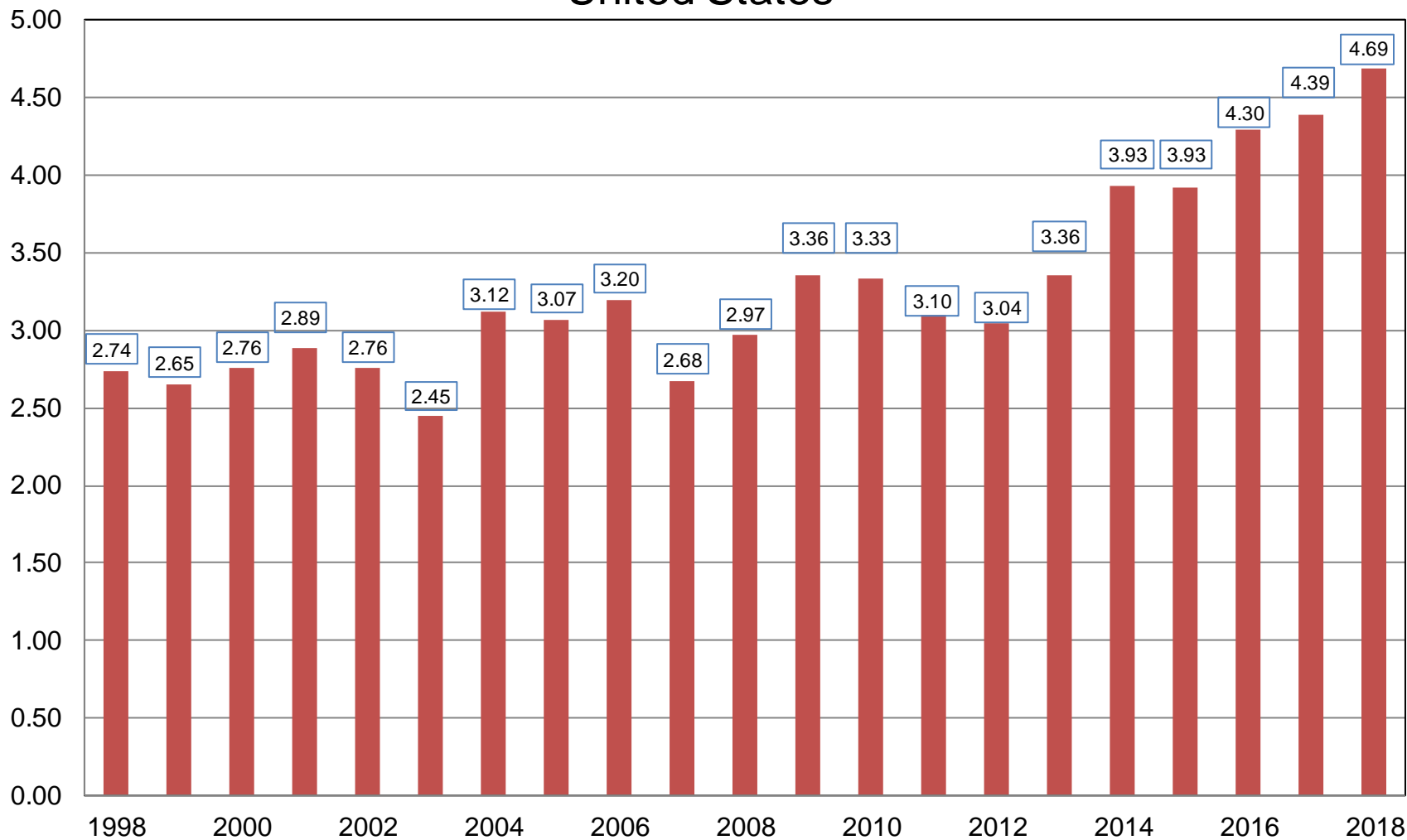
September 2018 Crop Production

Crop	Unit	September 2018	% Change From Previous Forecast	% Change From Previous Season
Soybeans				
Planted	Mil Ac	89.6	NC	-0.6
Harvested	Mil Ac	88.9	NC	-0.7
Yield	Bu/Ac	52.8	+2.3	+7.5
Production	Bil Bu	4.69	+2.3	+6.9



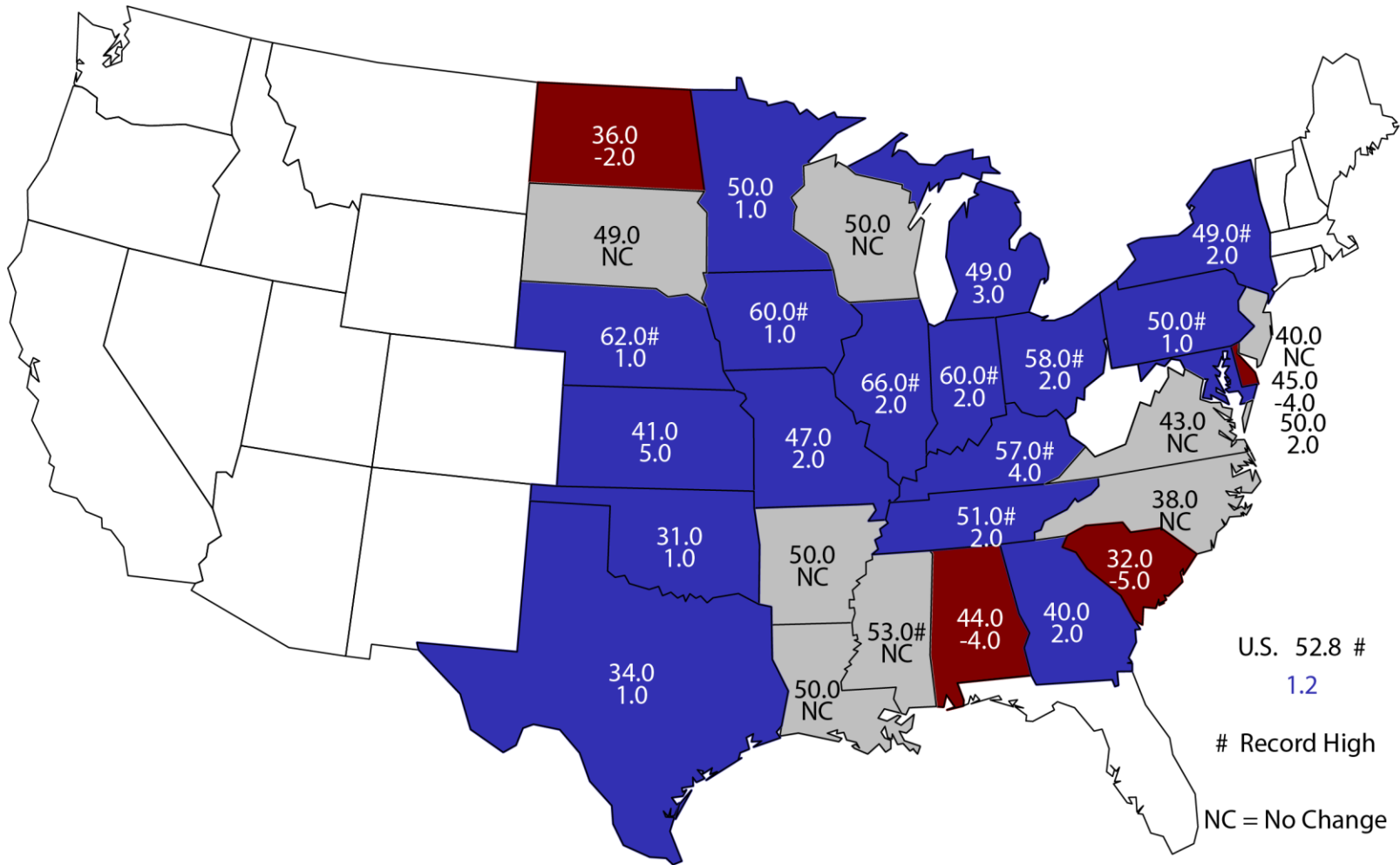
Soybean Production United States

Billion Bushels



September 1, 2018 Soybean Yield

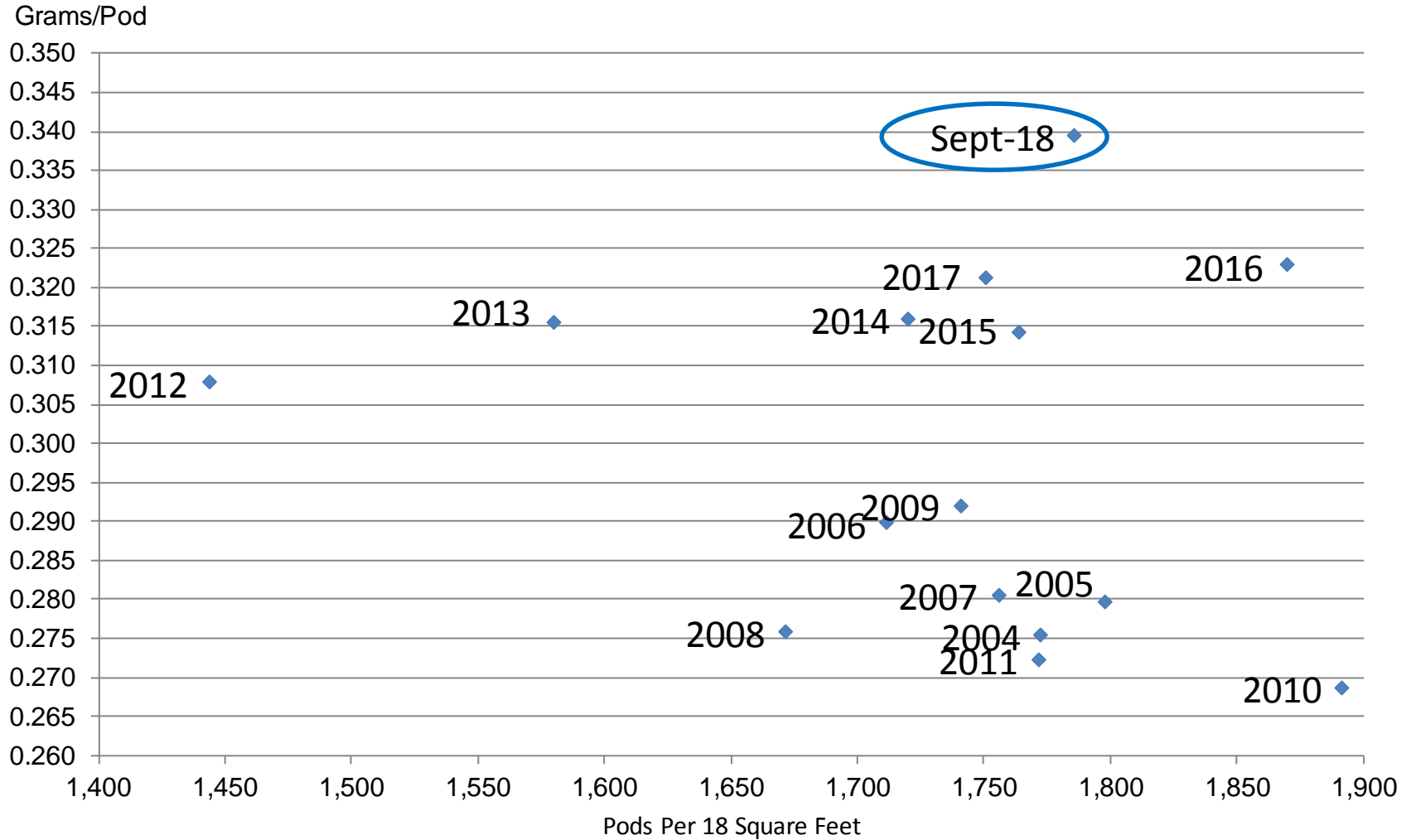
Bushels and Change From Previous Month



Record High
NC = No Change

Soybean Objective Yield Region

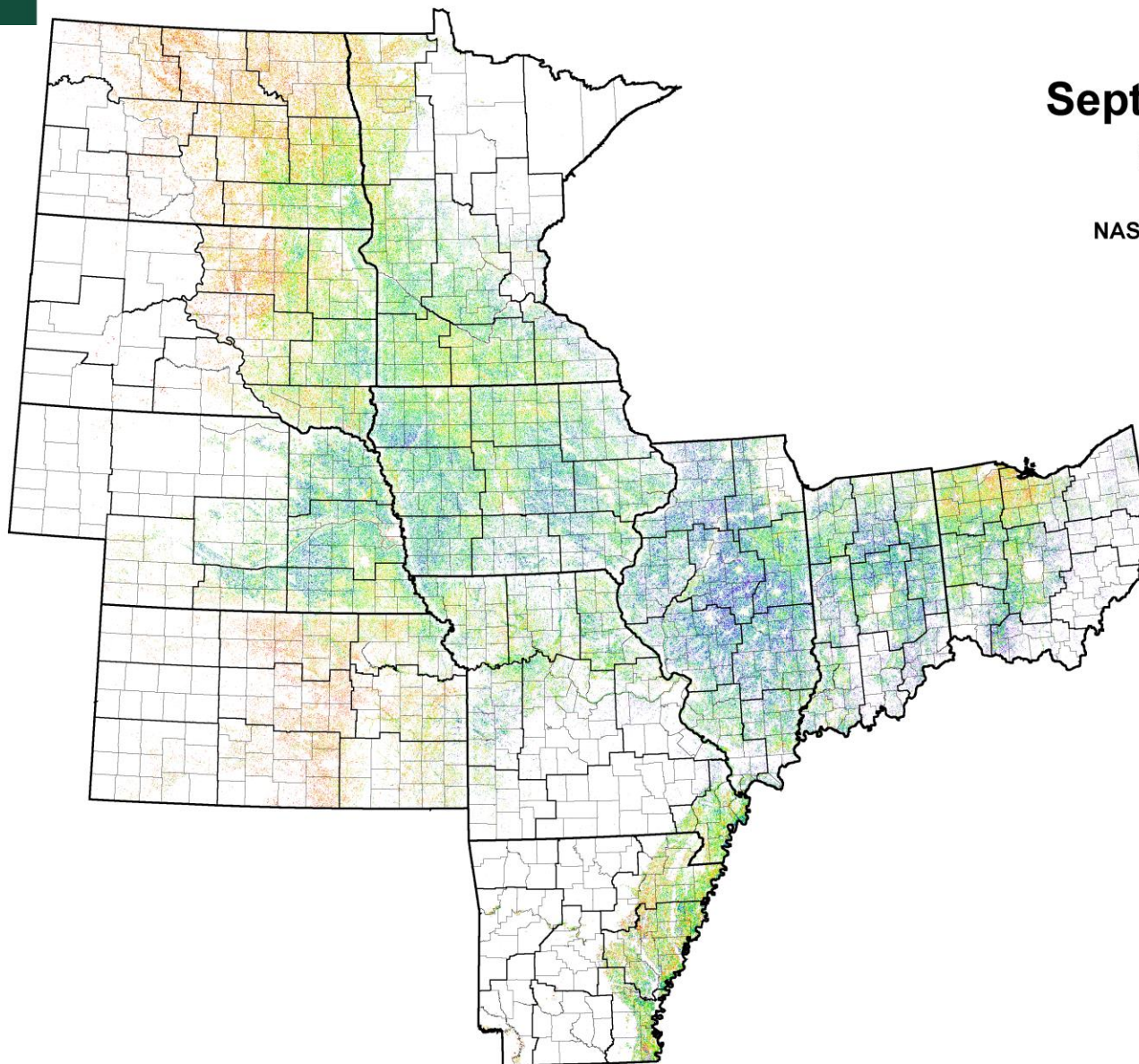
Pods Per 18 Square Feet vs. Implied Pod Weight



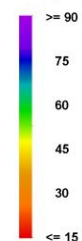
Implied Pod Weight = (Published Yield / Pods) / 0.0889

September 1, 2018 Soybeans

NASA Terra MODIS Modeled

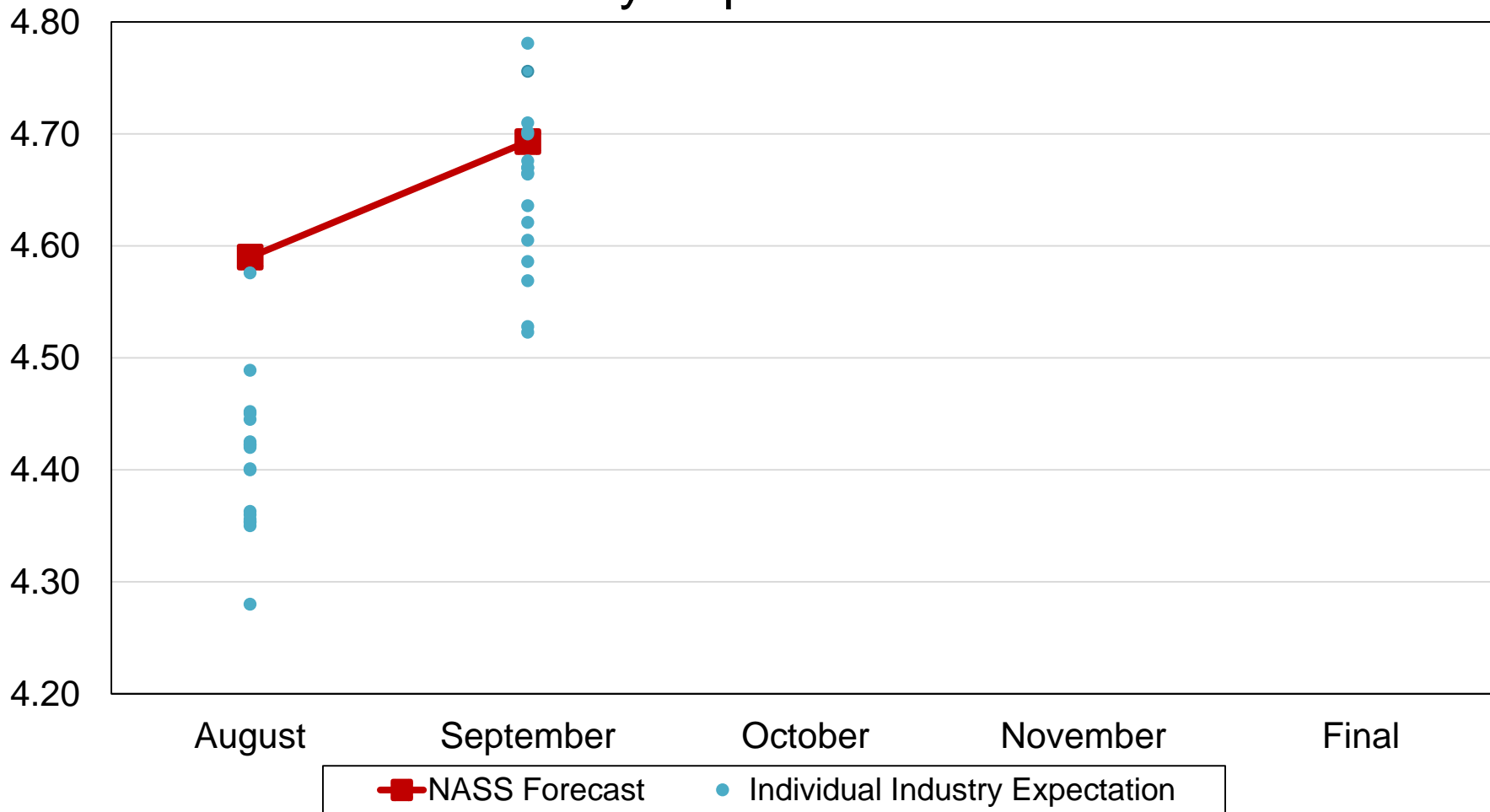


Bushels per Acre



2018 United States Soybean Production Industry Expectations vs NASS

Billion Bushels



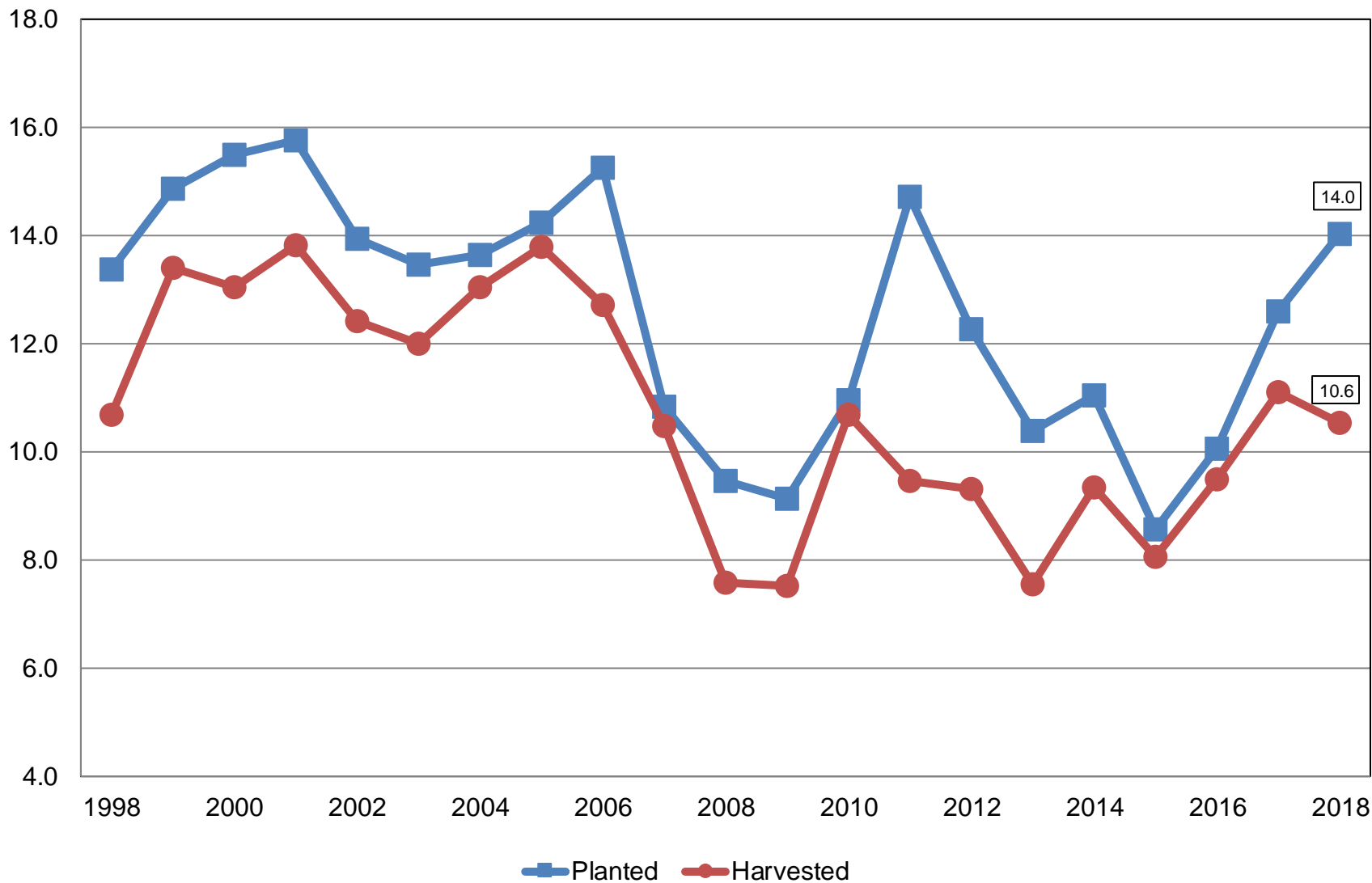


September 2018 Crop Production

Crop	Unit	September 2018	% Change From Previous Forecast	% Change From Previous Season
All Cotton				
Planted	Mil Ac	14.0	+3.9	+11.3
Harvested	Mil Ac	10.6	+4.1	-4.9
Yield	Lb/Ac	895	-1.8	-1.1
Production	Mil Bls	19.7	+2.3	-5.9

All Cotton Acres United States

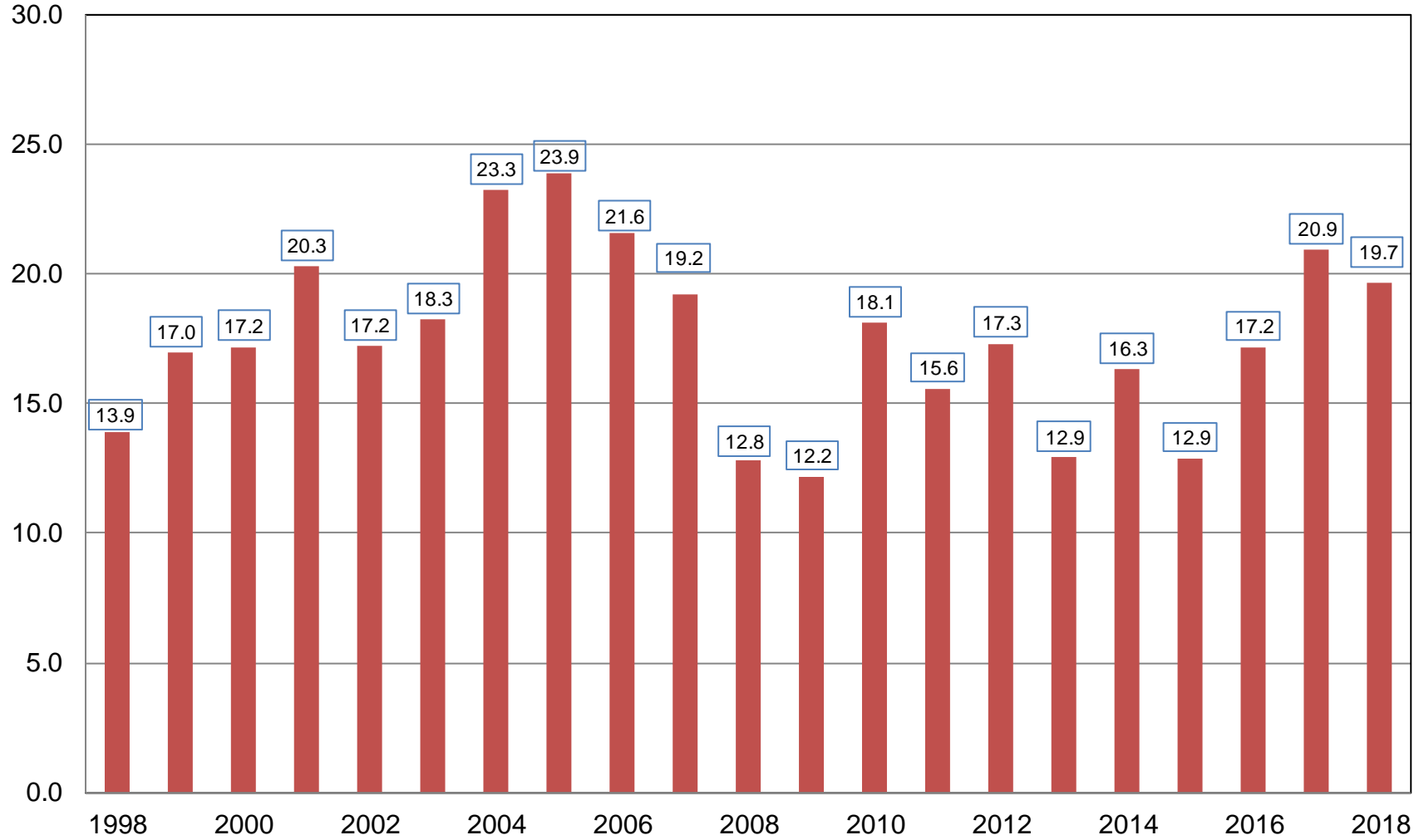
Million Acres





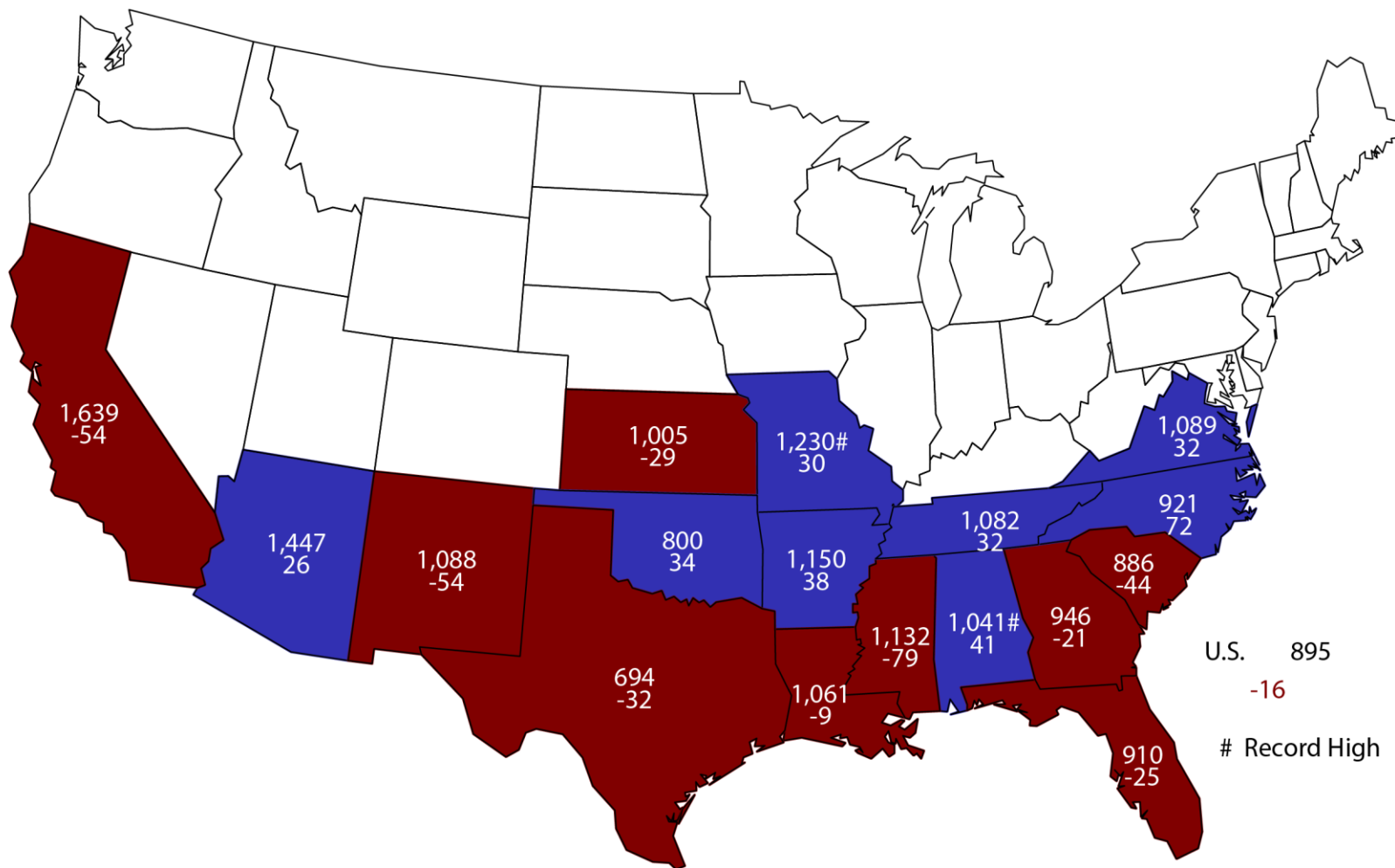
All Cotton Production United States

Million Bales



September 1, 2018 All Cotton Yield

Pounds and Change From Previous Forecast



U.S. 895
-16
Record High



September 2018 Crop Production

Crop	Unit	September 2018	% Change From Previous Forecast	% Change From Previous Season
Rice				
Planted	Mil Ac	2.94	+3.6	+19.5
Harvested	Mil Ac	2.90	+3.5	+22.2
Yield	Lbs/Ac	7,563	+0.5	+0.7
Production	Mil Cwt	219	+4.1	+23.1



September 2018 Crop Production

Crop	Unit	September 2018	% Change From Previous Forecast	% Change From Previous Season
Peanuts				
Planted	Mil Ac	1.43	-5.0	-23.7
Harvested	Mil Ac	1.39	-5.0	-21.9
Yield	Lbs/Ac	4,151	-0.4	+1.9
Production	Bil Lbs	5.76	-5.4	-20.4



September 2018 Crop Production

Crop	Unit	September 2018	% Change From Previous Forecast	% Change From Previous Season
Sorghum	Mil Bu	376	+0.3	+3.5
All Tobacco	Mil Lbs	637	-1.5	-10.3
Sugarbeets	Mil Tons	36.0	+2.1	+1.9
Sugarcane	Mil Tons	32.7	+0.5	-1.5



September 2018 Crop Production

Crop	Unit	September 2018	% Change From Previous Forecast	% Change From Previous Season
A. Winter Peas	Thou Cwt	146	NA	+16.8
Dry Edible Peas	Mil Cwt	13.9	NA	-2.1
Lentils	Mil Cwt	8.79	NA	+17.4



September 2018 Crop Production

Crop	Unit	September 2018	% Change From Previous Forecast	% Change From Previous Season
Navel Oranges (CA)	Mil Tons	1.60	NA	+11.4
Hazelnuts (OR)	Thou Tons	52.0	NA	+62.5
Walnuts (CA)	Thou Tons	690	NA	+9.5



Upcoming Reports

Release Date	Report Title
September 13	Potatoes
September 21	Cattle on Feed
September 27	Ag Prices Hogs and Pigs
September 28	Grain Stocks Small Grains Summary
October 1	CAIR: Cotton, Fats & Oils, and Grain Crushings
October 11	Crop Production Cotton Ginnings

STAT CHAT SERIES

You can tweet questions in advance to [@usda_nass](https://twitter.com/usda_nass).

#STATCHAT

Join [@usda_nass](https://twitter.com/usda_nass) on Twitter using [#StatChat](https://twitter.com/hashtag/StatChat) on Wednesday, Sept. 12 at 1 p.m. ET to discuss the *Crop Production* report with Lance Honig.

**WED,
SEPT. 12
1PM ET**





United States Department of Agriculture
National Agricultural Statistics Service

All Reports Available At
www.nass.usda.gov

For Questions
202-720-2127
800-727-9540
nass@nass.usda.gov