



United States Department of Agriculture  
**National Agricultural Statistics Service**

---

---

**Small Grains Summary**  
**Grain Stocks**  
Executive Summary

Lance Honig, Chief  
Crops Branch



# Contents

| Field Crops | Grain Stocks | Oilseed Stocks |
|-------------|--------------|----------------|
| Wheat       | Corn         | Soybeans       |
| Barley      | Wheat        | Sunflower      |
| Oats        | Barley       | Safflower      |
| Rye         | Oats         | Mustard Seed   |
|             | Sorghum      |                |

# Survey Overview

|                   | September Ag Survey                       | Off- Farm Grain Stocks Survey   |
|-------------------|---|---|
| Survey Type       | Farmer Reported                           | Off-Farm Grain Stock Facilities   |
| Collection Method | Mail, Phone, Internet, Personal Interview | Mail, Phone, Internet, Personal Interview                                       |
| Crops Included    | Barley, Oats, Rye, Wheat                  | Barley, Corn, Mustard Seed, Oats, Soybean, Safflower, Sorghum, Sunflower, Wheat |
| States            | All States Except HI, MA, NH, RI, and VT  | All States Except AK, HI, and NV  |
| Sample Size       | 66,343                                    | ~ 8,500 Facilities  |
| Collection Period | August 30 – September 15                  | August 30 – September 18  |



# Small Grains Annual Summary

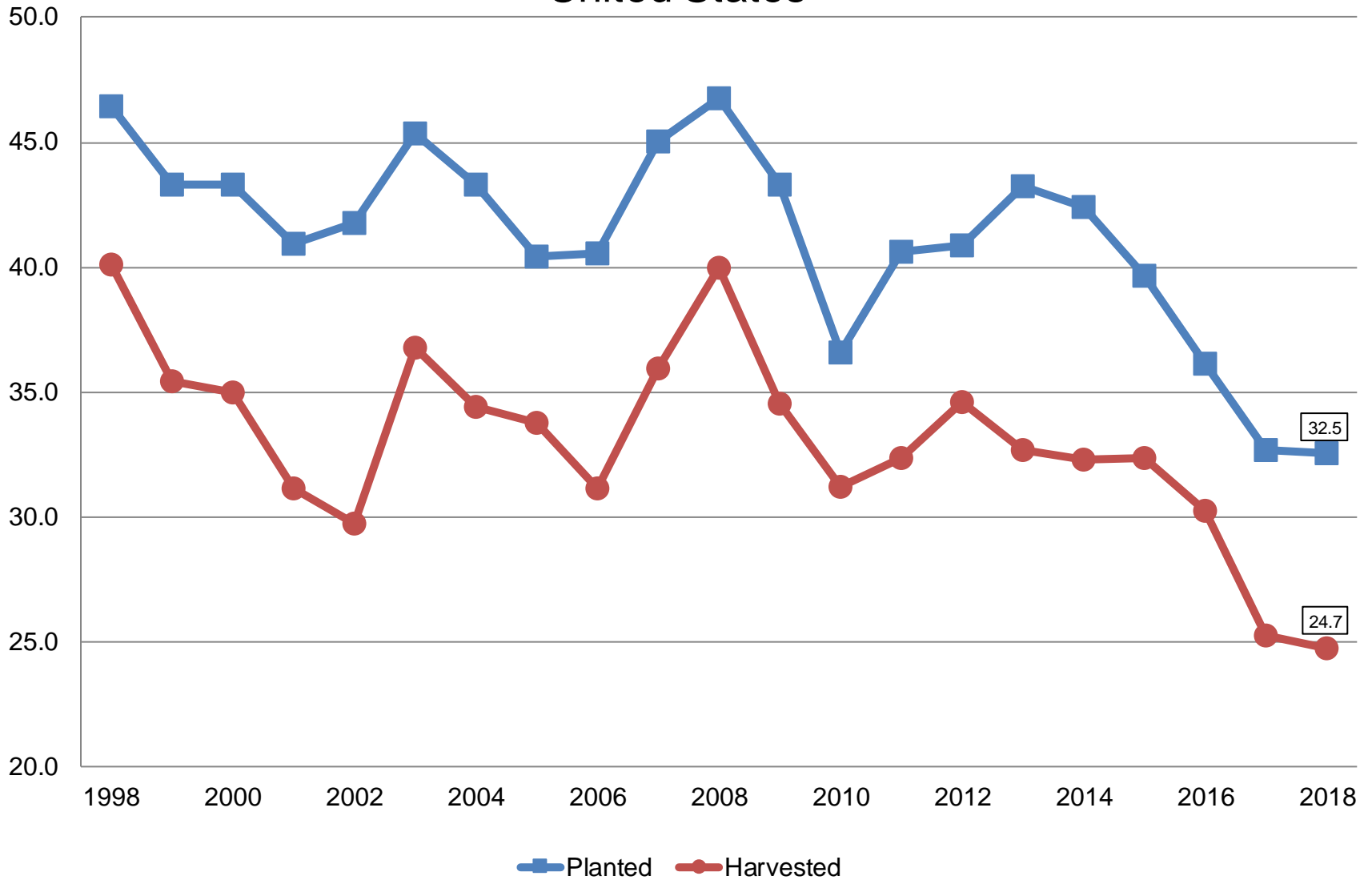
| Crop          | Unit   | September 2018 | % Change From Previous Forecast | % Change From Previous Season |
|---------------|--------|----------------|---------------------------------|-------------------------------|
| Wheat, Winter |        |                |                                 |                               |
| Planted       | Mil Ac | 32.5           | -0.6                            | -0.5                          |
| Harvested     | Mil Ac | 24.7           | -0.3                            | -2.2                          |
| Yield         | Bu/Ac  | 47.9           | NC                              | -4.6                          |
| Production    | Bil Bu | 1.18           | -0.4                            | -6.7                          |



# Winter Wheat Acres

## United States

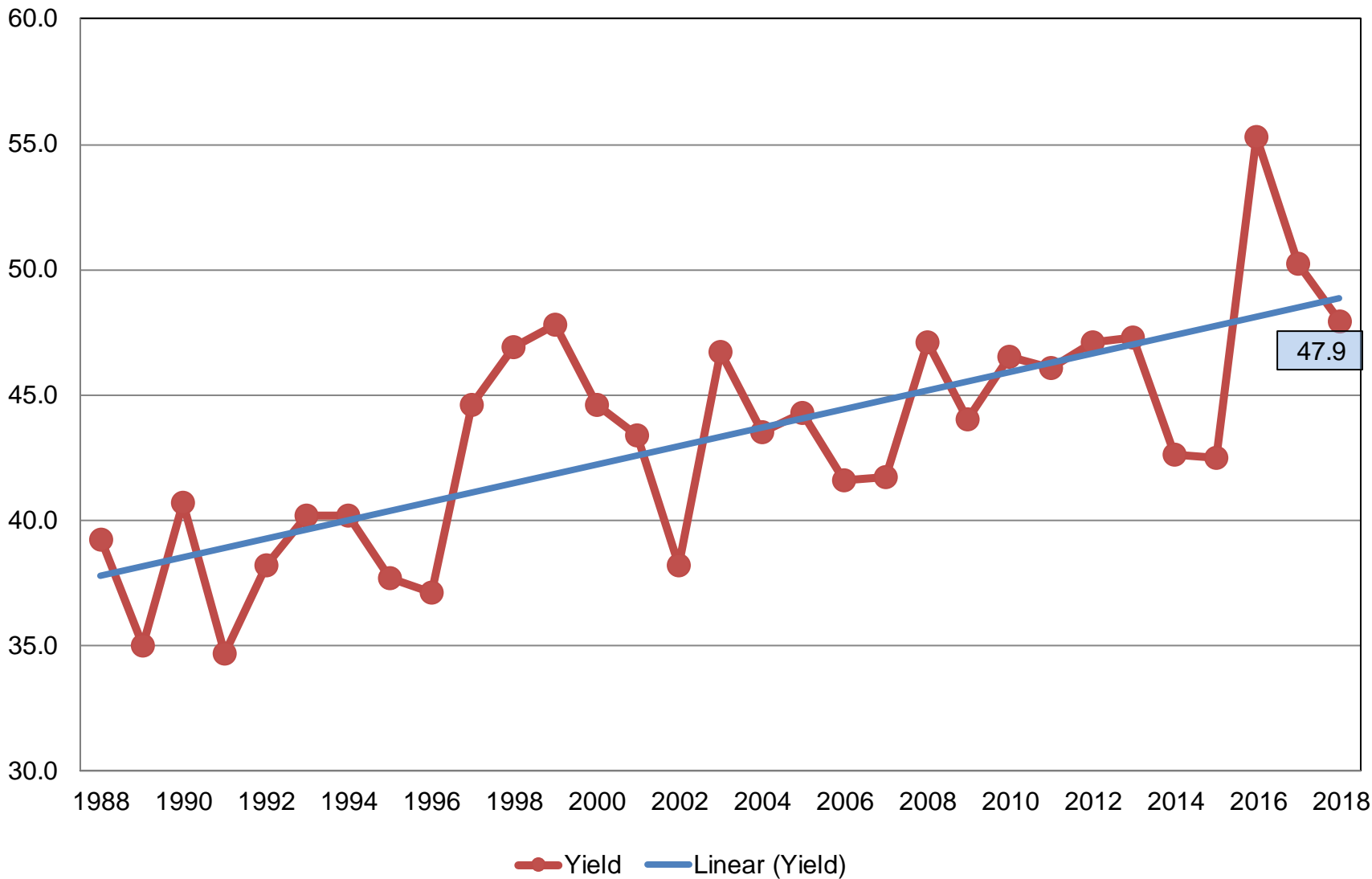
Million Acres





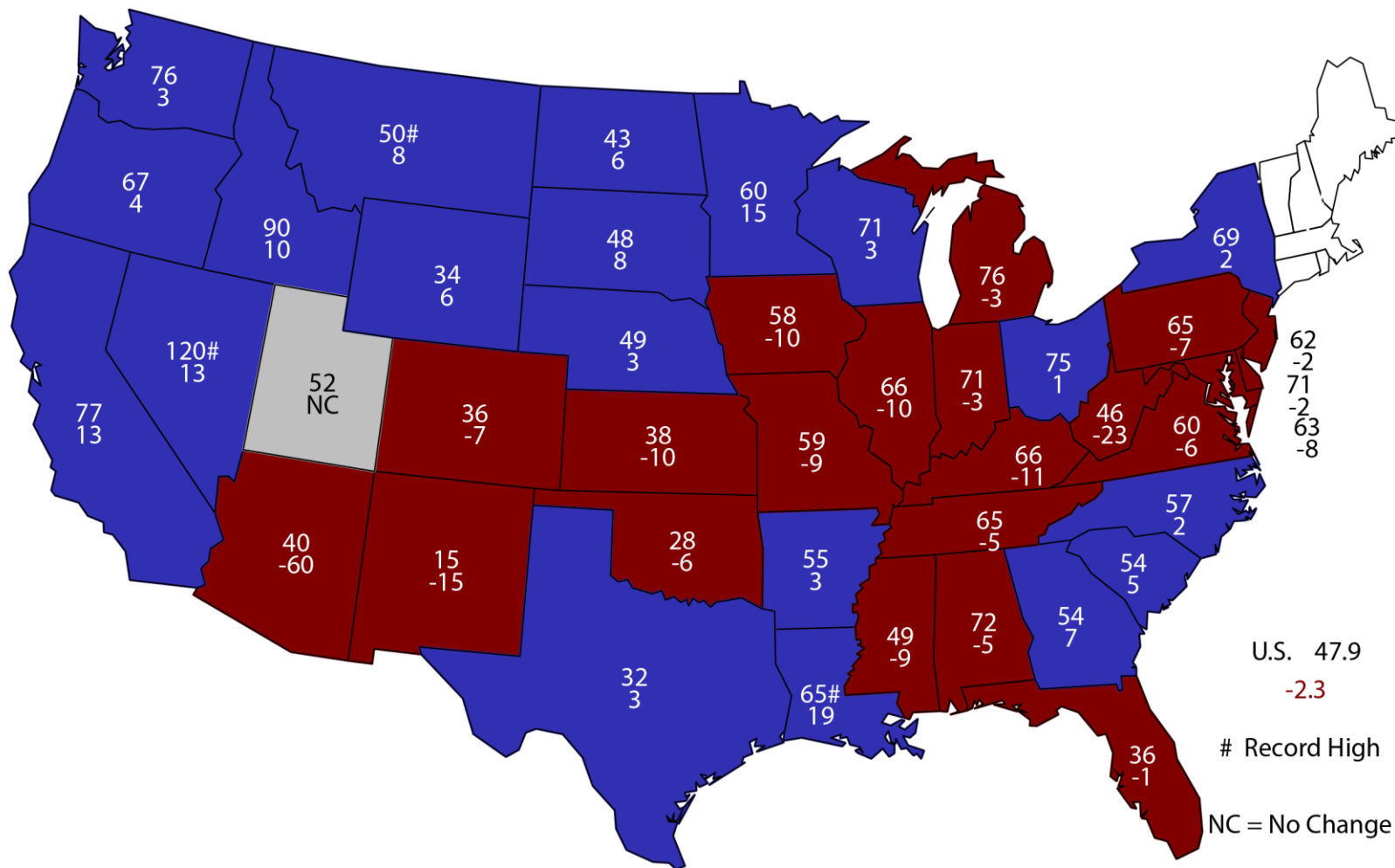
# Winter Wheat Yield United States

Bushels per Acre



# 2018 Winter Wheat Yield

## Bushels and Change From Previous Year



U.S. 47.9  
 -2.3  
 # Record High  
 NC = No Change



# Small Grains Annual Summary

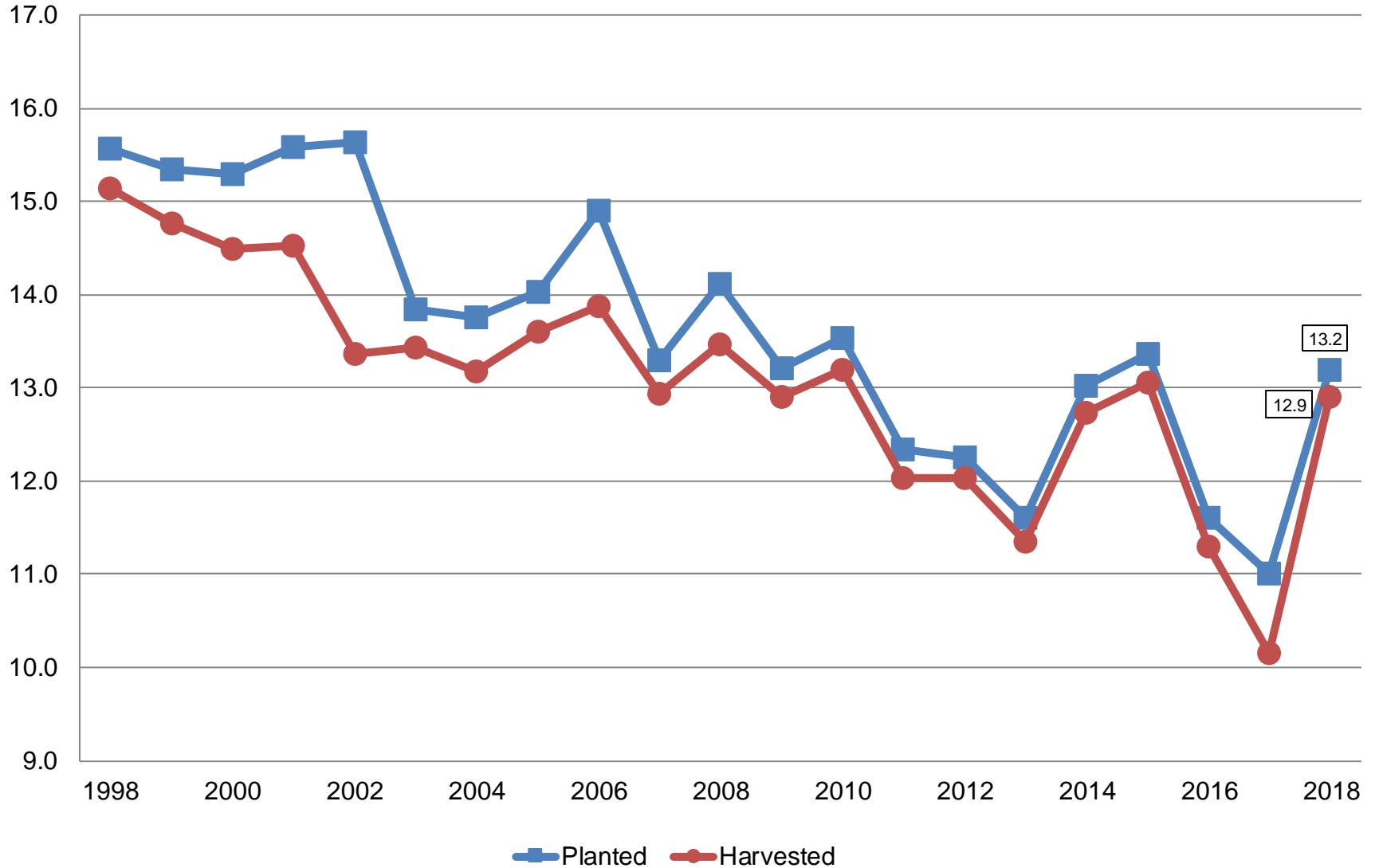
| Crop          | Unit   | September 2018 | % Change From Previous Forecast | % Change From Previous Season |
|---------------|--------|----------------|---------------------------------|-------------------------------|
| Wheat, Spring |        |                |                                 |                               |
| Planted       | Mil Ac | 13.2           | -<0.1                           | +19.8                         |
| Harvested     | Mil Ac | 12.9           | -<0.1                           | +27.1                         |
| Yield         | Bu/Ac  | 48.3           | +1.5                            | +17.8                         |
| Production    | Mil Bu | 623            | +1.5                            | +50.0                         |





# Other Spring Wheat Acres United States

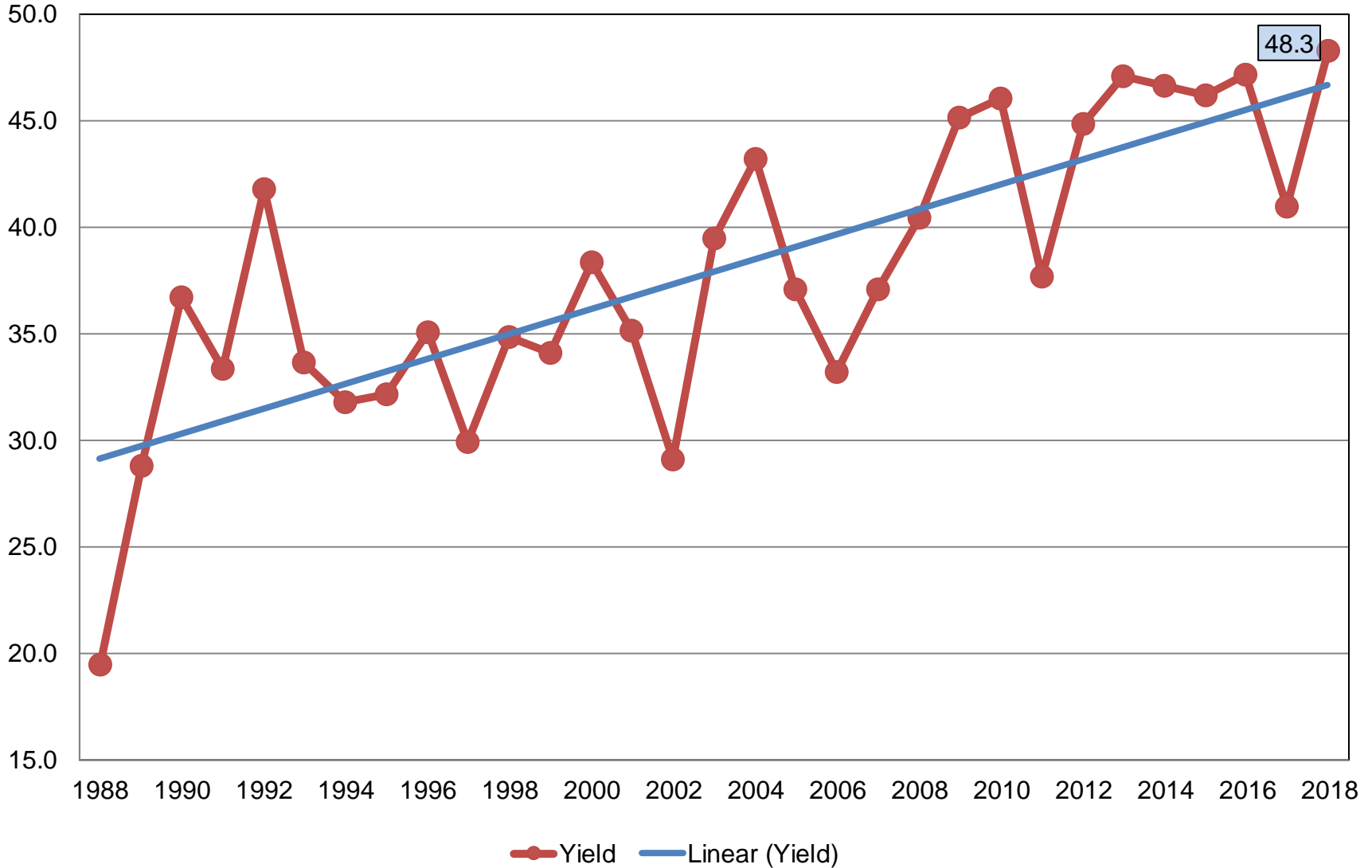
Million Acres





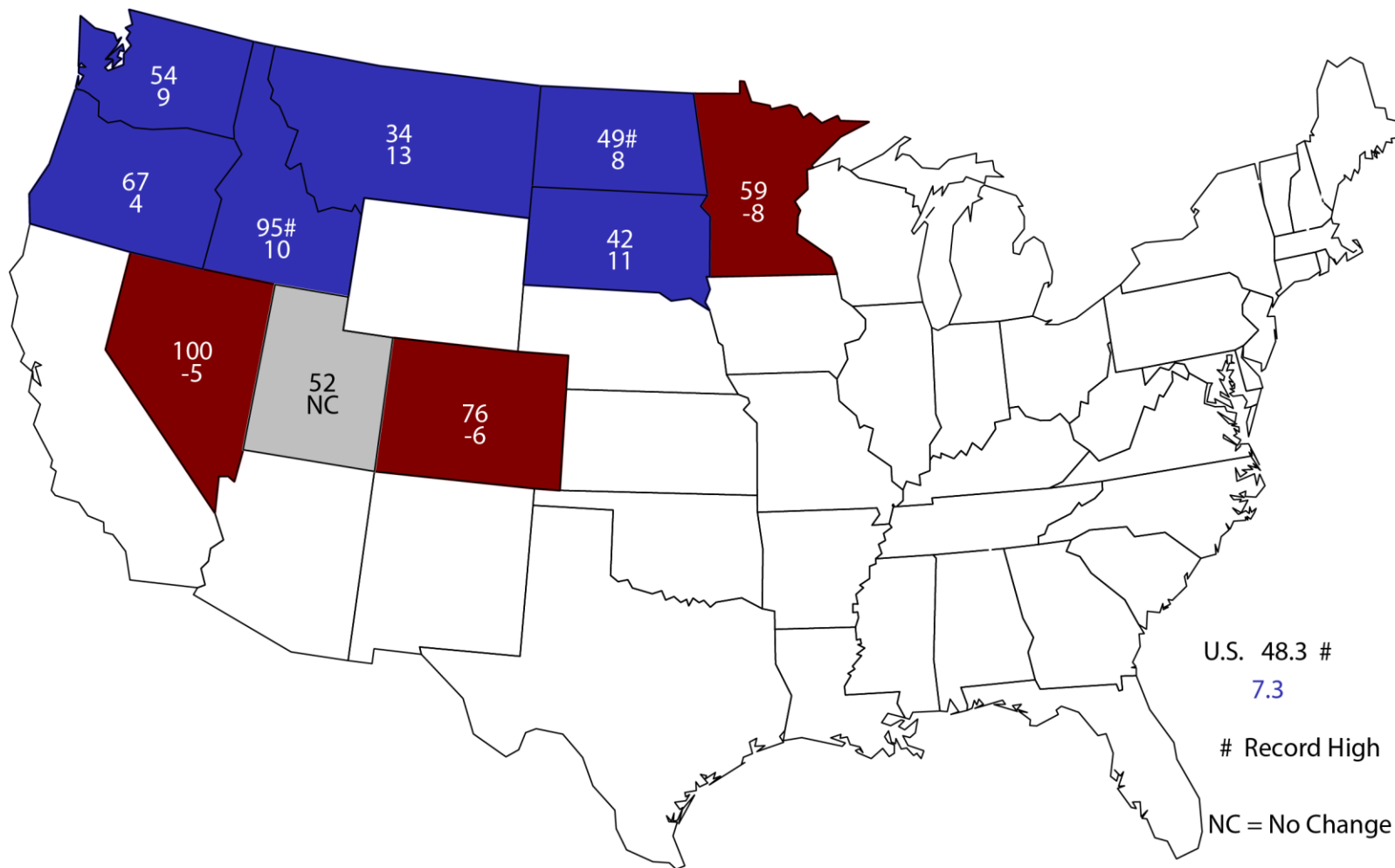
# Other Spring Wheat Yield United States

Bushels per Acre



# 2018 Other Spring Wheat Yield

## Bushels and Change From Previous Year



U.S. 48.3 #  
 7.3  
 # Record High  
 NC = No Change



# Small Grains Annual Summary

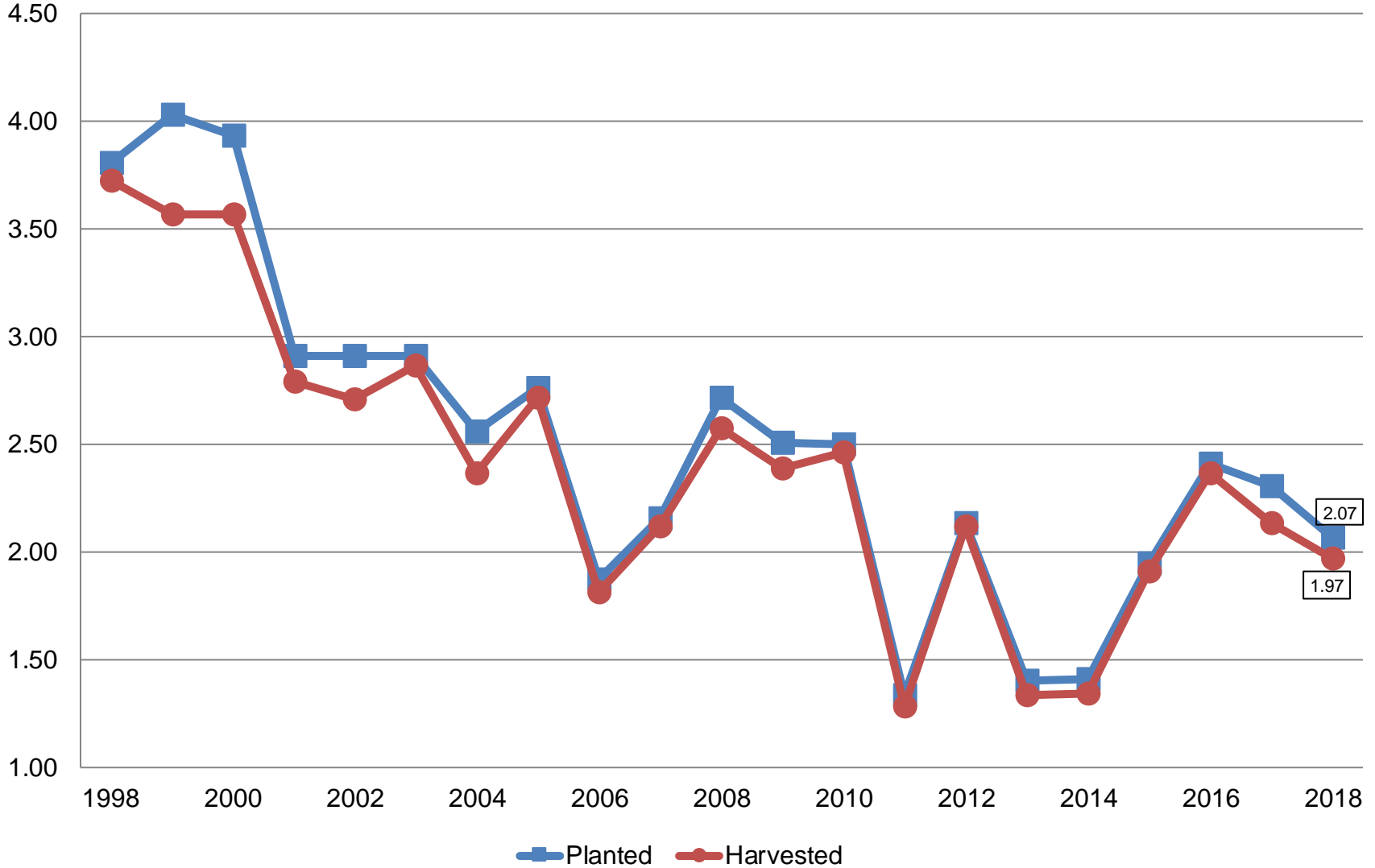
| Crop         | Unit   | September 2018 | % Change From Previous Forecast | % Change From Previous Season |
|--------------|--------|----------------|---------------------------------|-------------------------------|
| Wheat, Durum |        |                |                                 |                               |
| Planted      | Mil Ac | 2.07           | +9.4                            | -10.5                         |
| Harvested    | Mil Ac | 1.97           | +6.8                            | -6.6                          |
| Yield        | Bu/Ac  | 39.3           | -1.5                            | +51.2                         |
| Production   | Mil Bu | 77.3           | +5.2                            | +41.1                         |



# Durum Wheat Acres

## United States

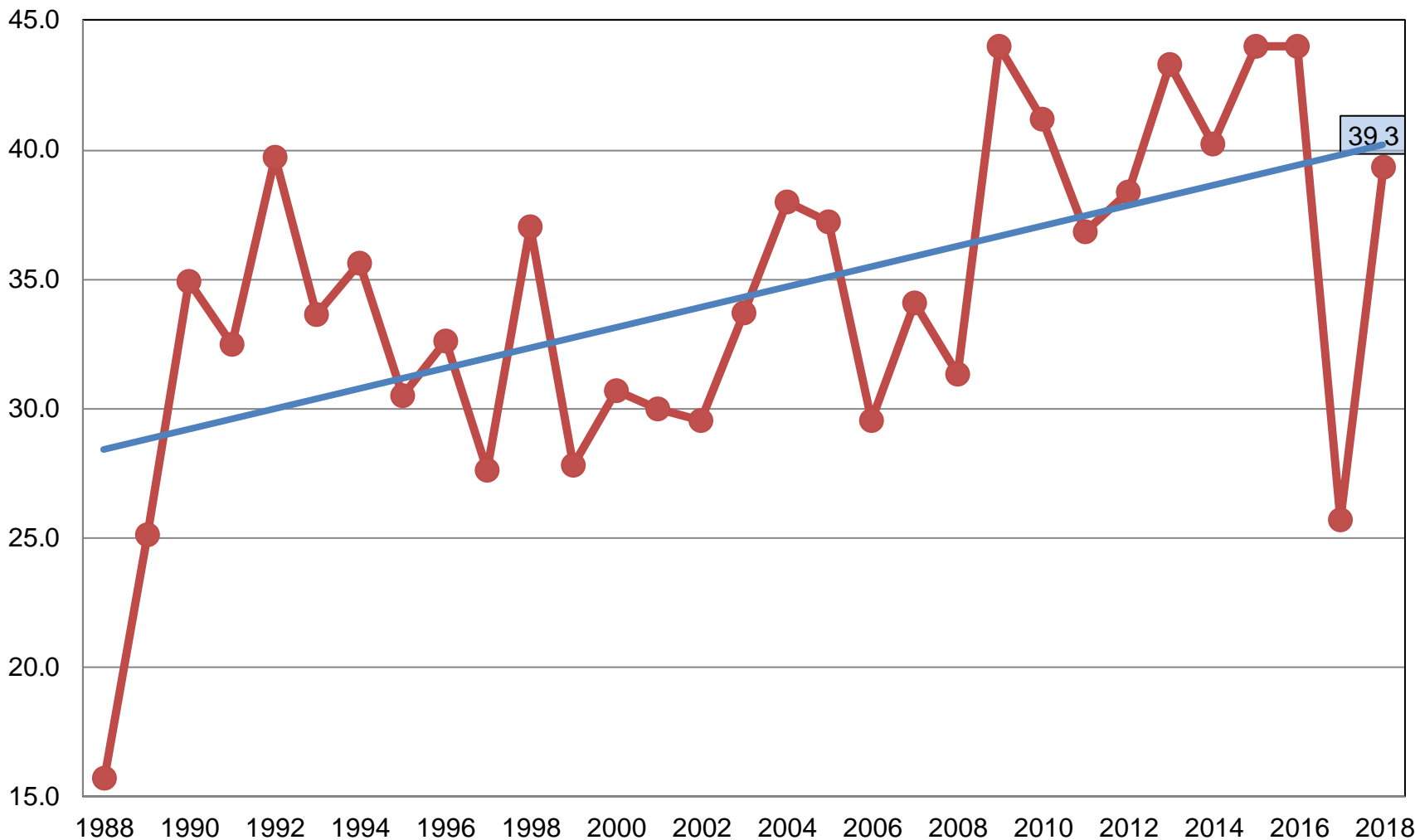
Million Acres



# Durum Wheat Yield

## United States

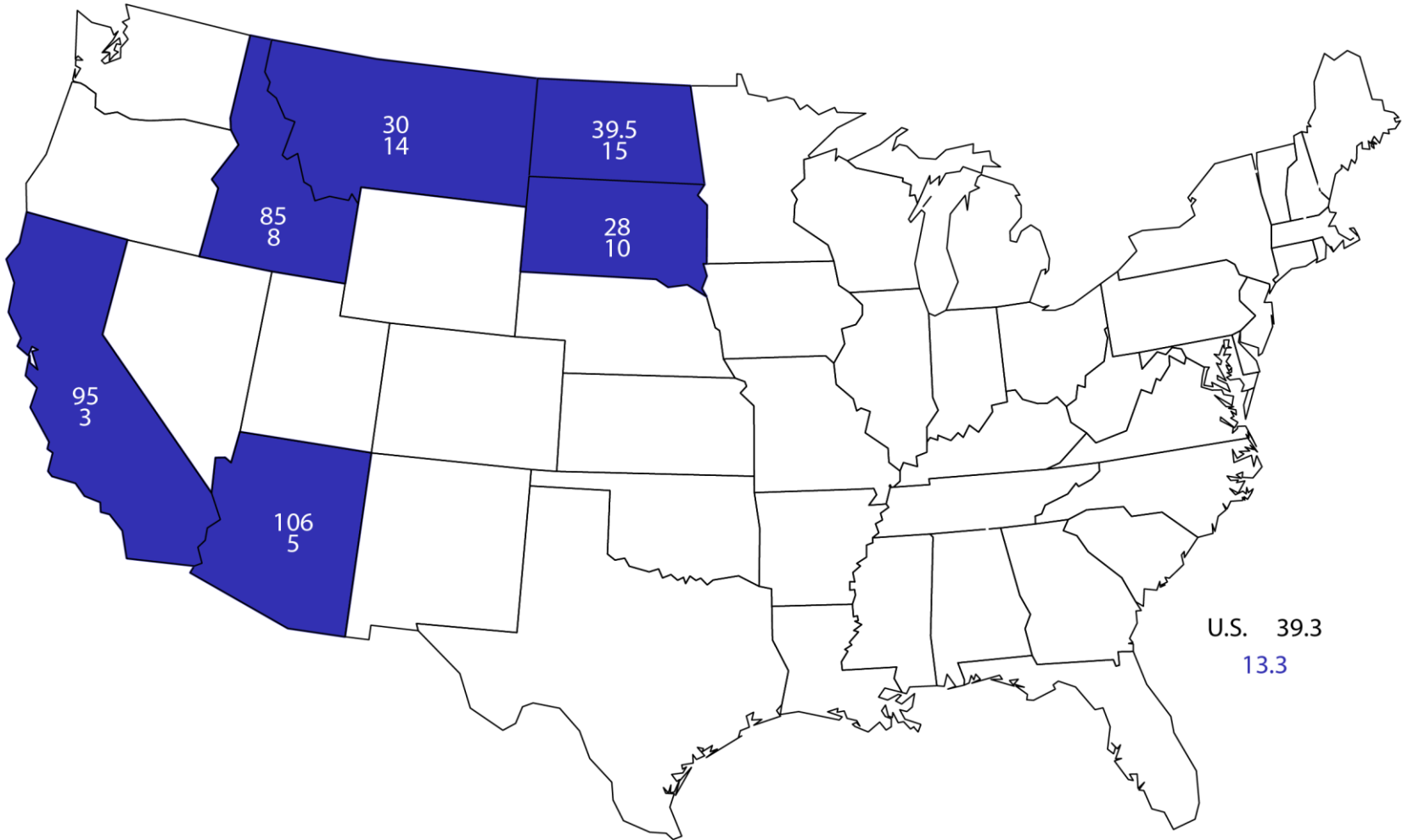
Bushels per Acre



—●— Yield    — Linear (Yield)

# 2018 Durum Wheat Yield

## Bushels and Change From Previous Year





# Small Grains Annual Summary

| Crop       | Unit   | September 2018 | % Change From Previous Forecast | % Change From Previous Season |
|------------|--------|----------------|---------------------------------|-------------------------------|
| Wheat, All |        |                |                                 |                               |
| Planted    | Mil Ac | 47.8           | -<0.1                           | +3.9                          |
| Harvested  | Mil Ac | 39.6           | +0.1                            | +5.5                          |
| Yield      | Bu/Ac  | 47.6           | +0.4                            | +2.8                          |
| Production | Bil Bu | 1.88           | +0.4                            | +8.3                          |

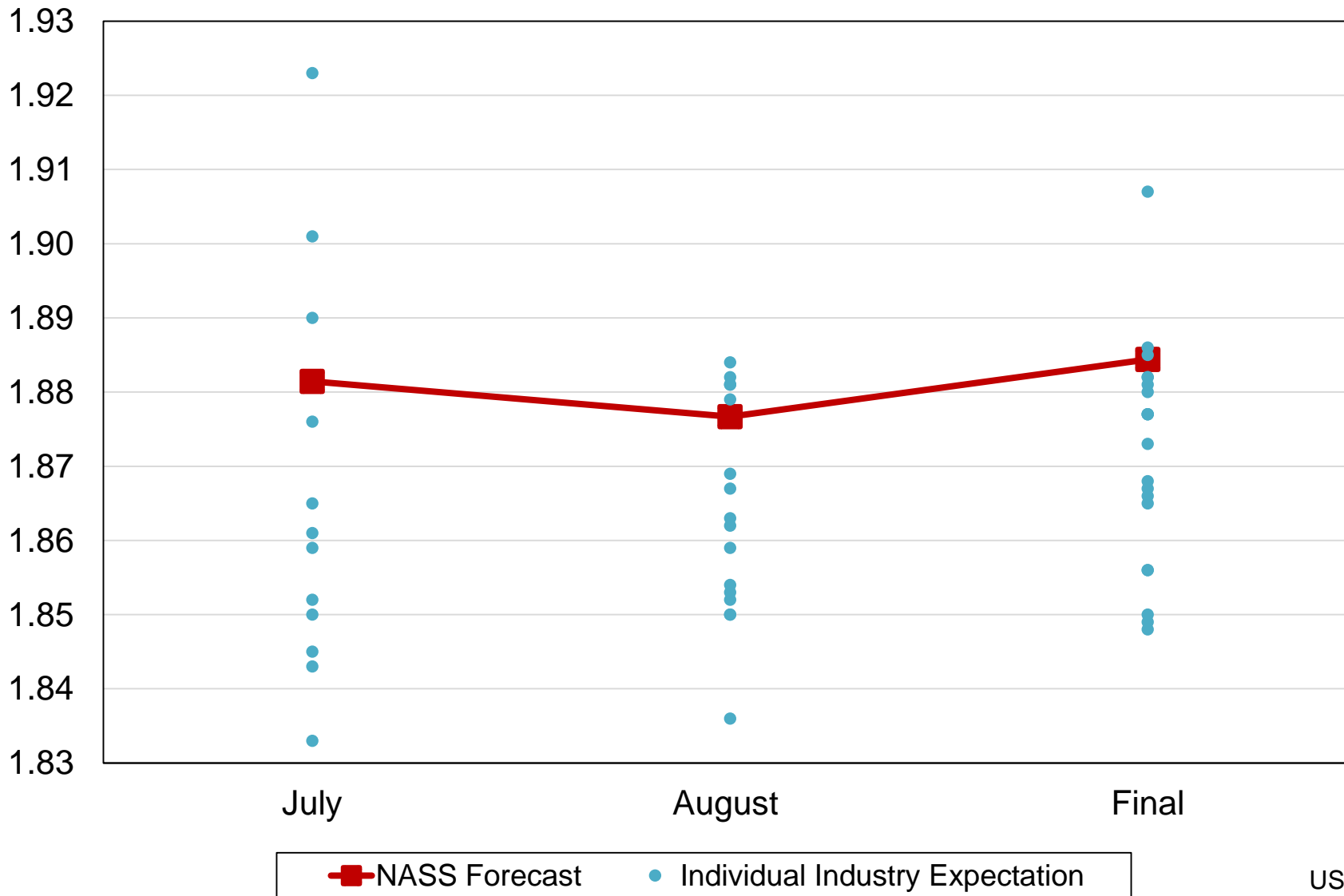




Billion Bushels

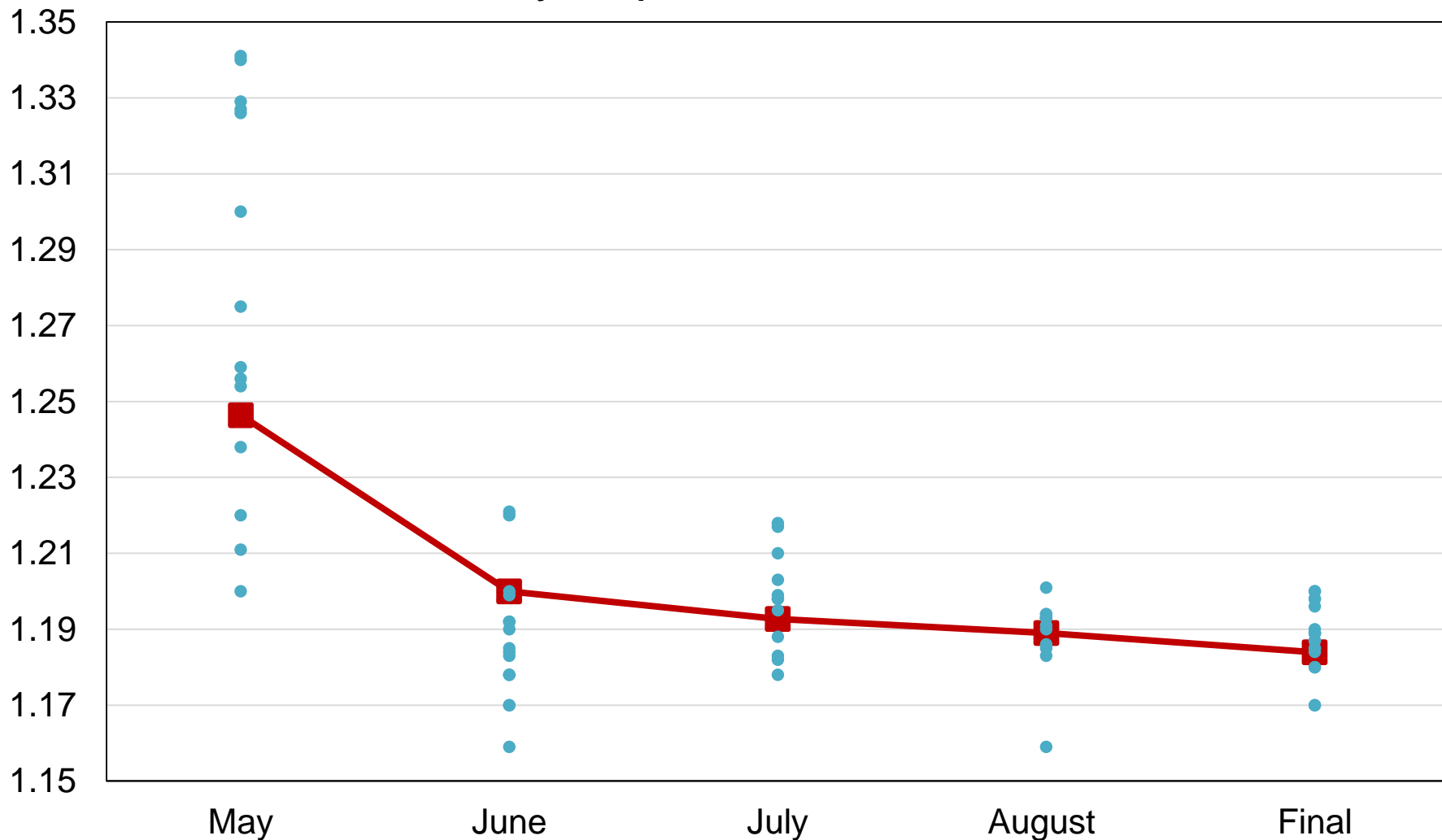


# 2018 United States All Wheat Production Industry Expectations vs NASS



# 2018 United States Winter Wheat Production Industry Expectations vs NASS

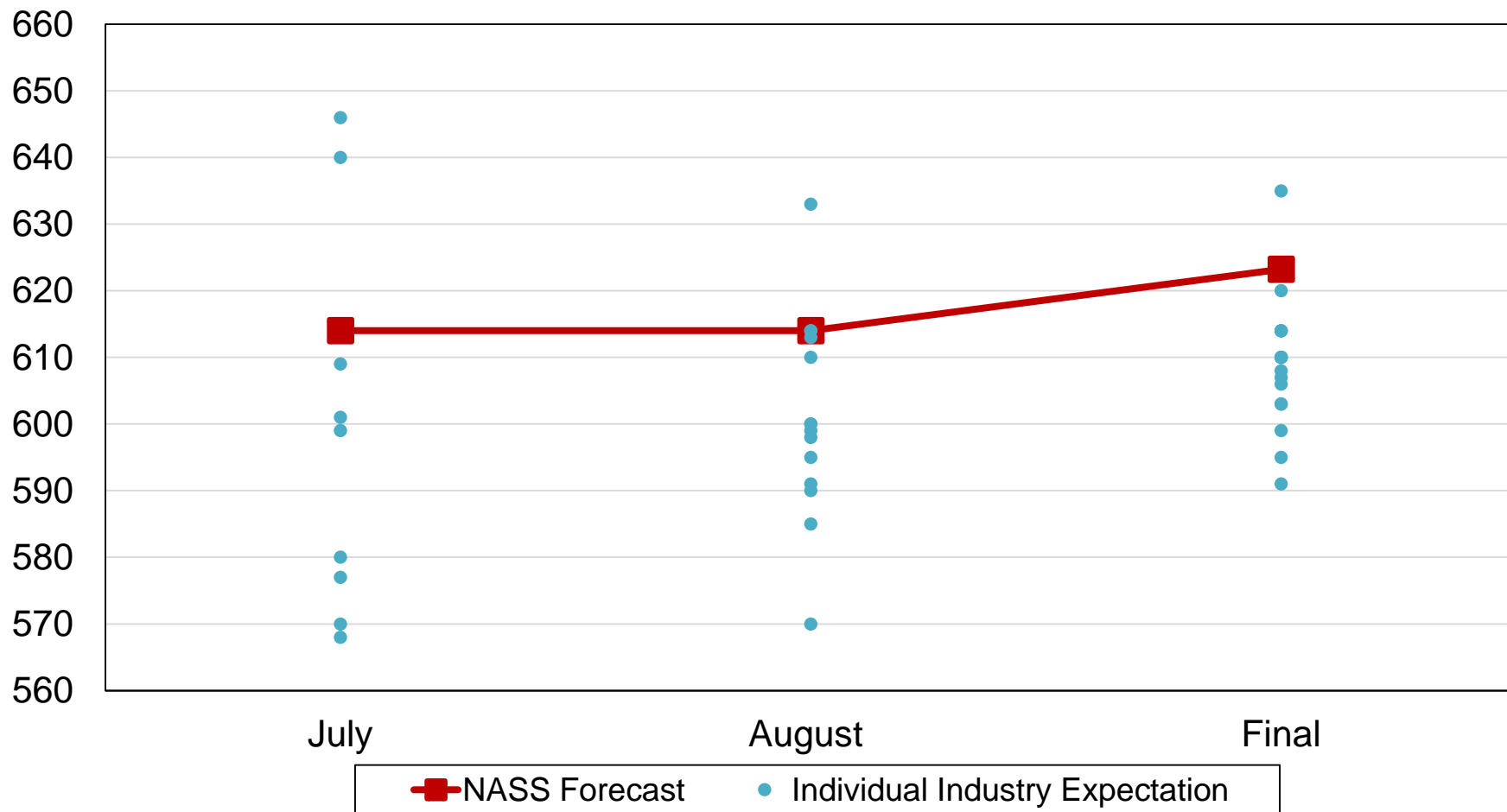
Billion Bushels



■ NASS Forecast    
 ● Individual Industry Expectation

# 2018 United States Other Spring Wheat Production Industry Expectations vs NASS

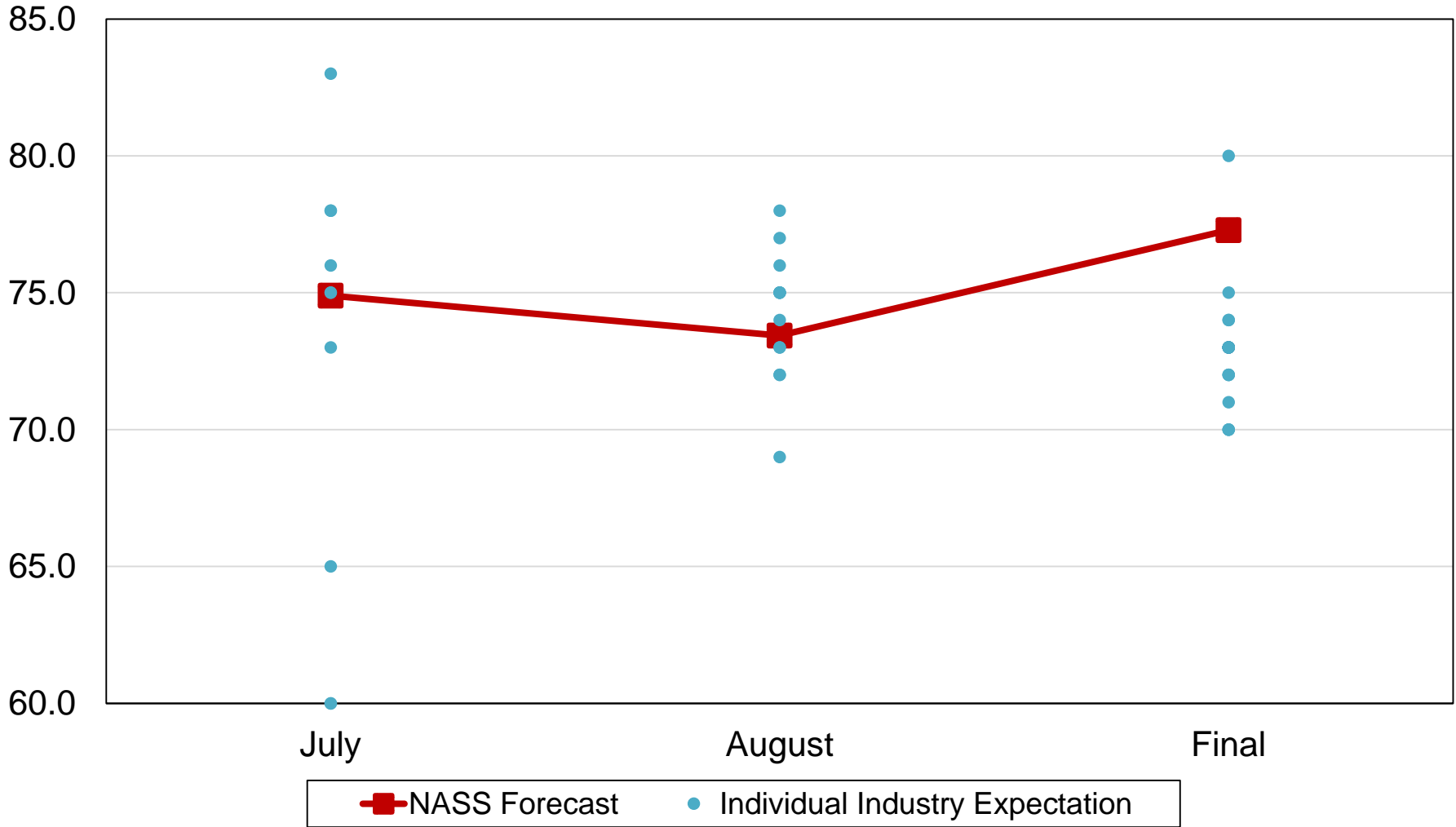
Million Bushels





# 2018 United States Durum Wheat Production Industry Expectations vs NASS

Million Bushels





# Small Grains Annual Summary

| Crop       | Unit   | September 2018 | % Change From Previous Forecast | % Change From Previous Season |
|------------|--------|----------------|---------------------------------|-------------------------------|
| Barley     |        |                |                                 |                               |
| Planted    | Mil Ac | 2.54           | -0.2                            | +2.5                          |
| Harvested  | Mil Ac | 1.98           | -3.3                            | +1.2                          |
| Yield      | Bu/Ac  | 77.4           | +1.4                            | +6.6                          |
| Production | Mil Bu | 153            | -2.0                            | +7.9                          |



# Small Grains Annual Summary

| Crop       | Unit   | September 2018 | % Change From Previous Forecast | % Change From Previous Season |
|------------|--------|----------------|---------------------------------|-------------------------------|
| Oats       |        |                |                                 |                               |
| Planted    | Mil Ac | 2.75           | -4.9                            | +6.1                          |
| Harvested  | Mil Ac | 0.865          | -14.3                           | +8.0                          |
| Yield      | Bu/Ac  | 64.9           | -0.3                            | +5.2                          |
| Production | Mil Bu | 56.1           | -14.5                           | +13.6                         |



# Small Grains Annual Summary

| Crop       | Unit   | September 2018 | % Change From Previous Forecast | % Change From Previous Season |
|------------|--------|----------------|---------------------------------|-------------------------------|
| Rye        |        |                |                                 |                               |
| Planted    | Mil Ac | 2.01           | +2.0                            | +2.5                          |
| Harvested  | Mil Ac | 0.273          | -22.7                           | -4.5                          |
| Yield      | Bu/Ac  | 30.9           | NA                              | -8.8                          |
| Production | Mil Bu | 8.43           | NA                              | -13.0                         |



# Percent of Acres Left to be Harvested

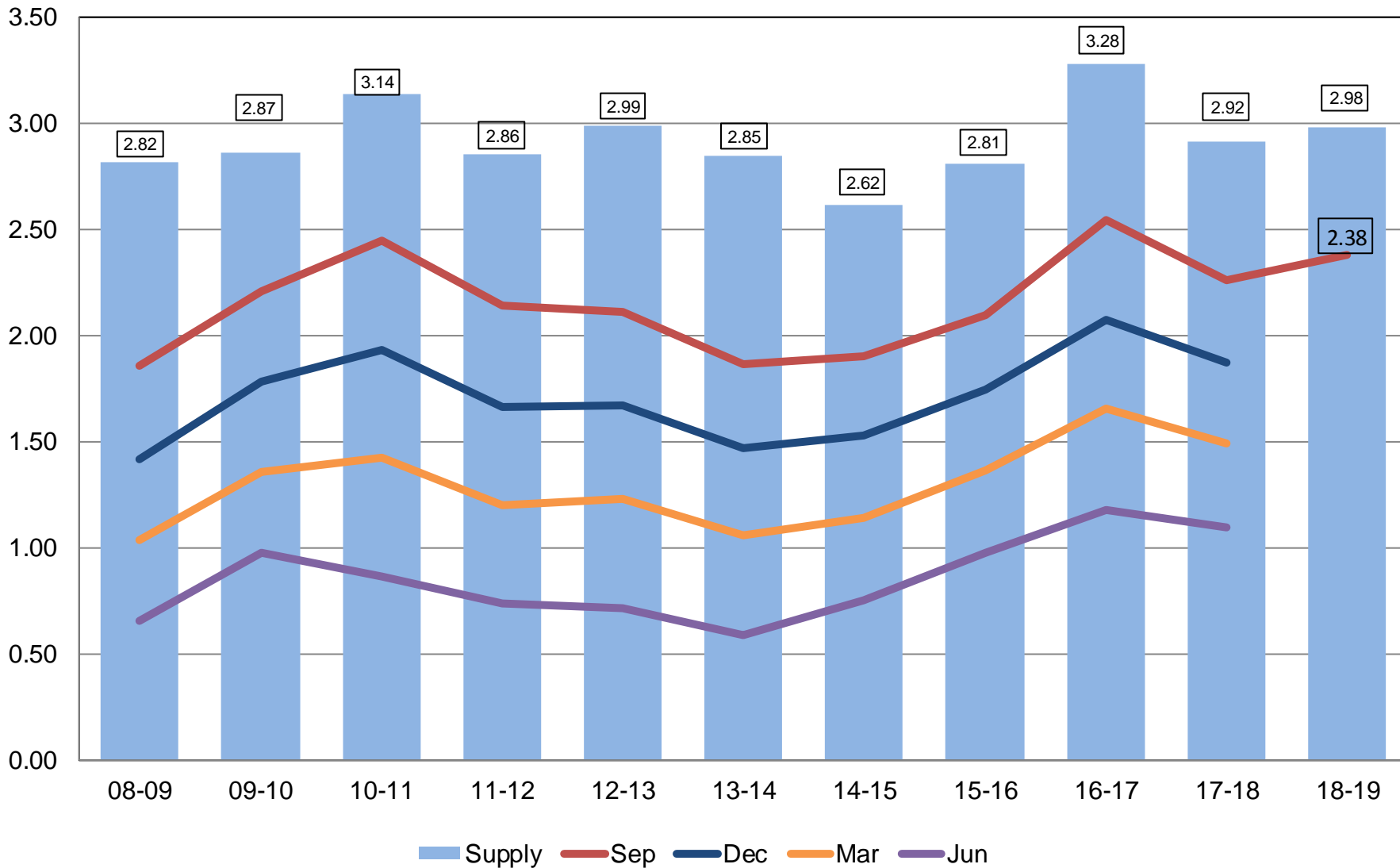
## United States

| Crop               | 2016           | 2017 | 2018 |
|--------------------|----------------|------|------|
|                    | <i>Percent</i> |      |      |
| Other Spring Wheat | 8.4            | 8.1  | 10.3 |
| Durum Wheat        | 17.0           | 8.5  | 28.5 |
| Barley             | 5.7            | 7.0  | 10.7 |
| Oats               | 7.7            | 13.4 | 10.1 |



# All Wheat Stocks United States

Billion Bushels

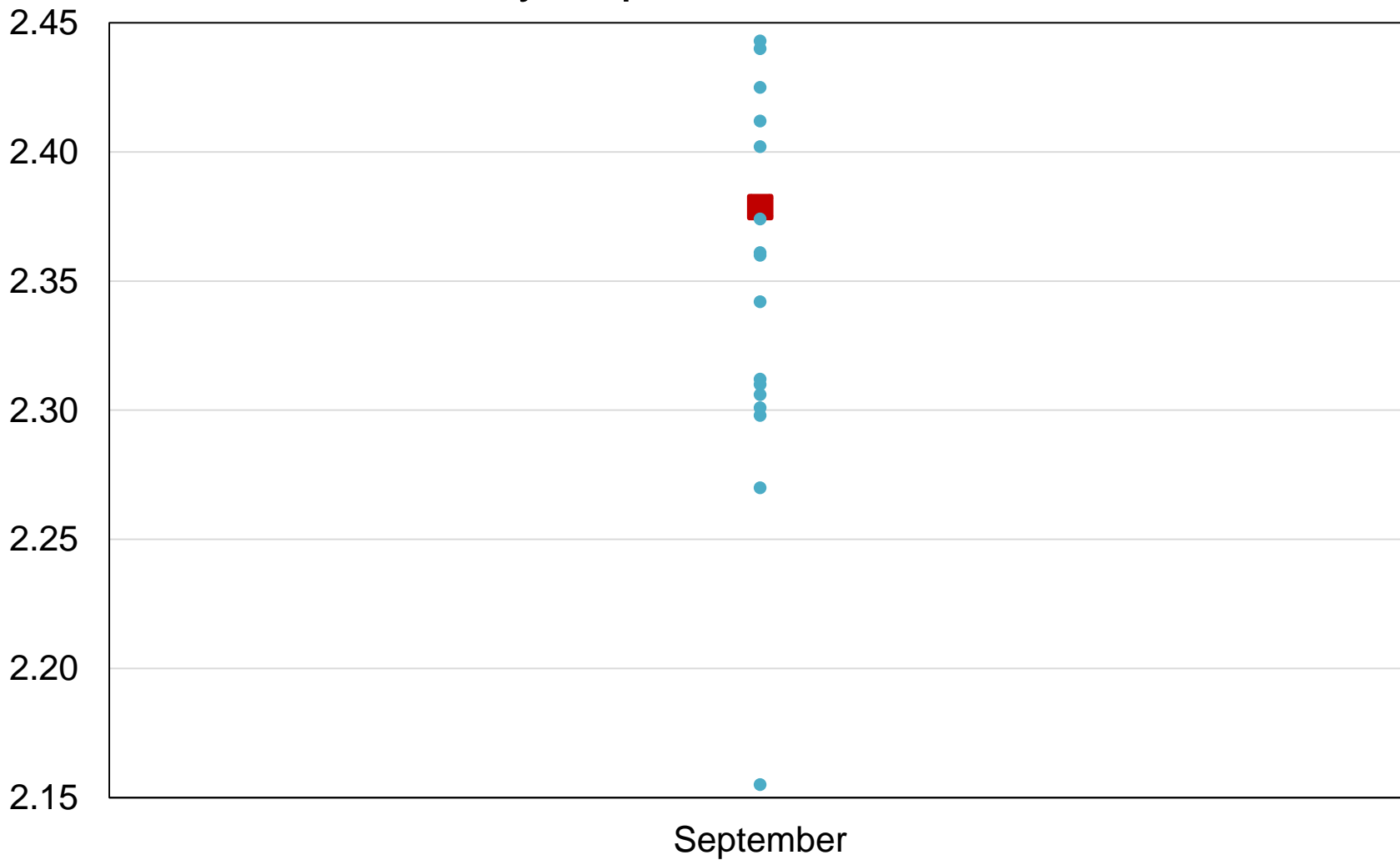




Billion Bushels



# 2018 United States All Wheat Stocks Industry Expectations vs NASS

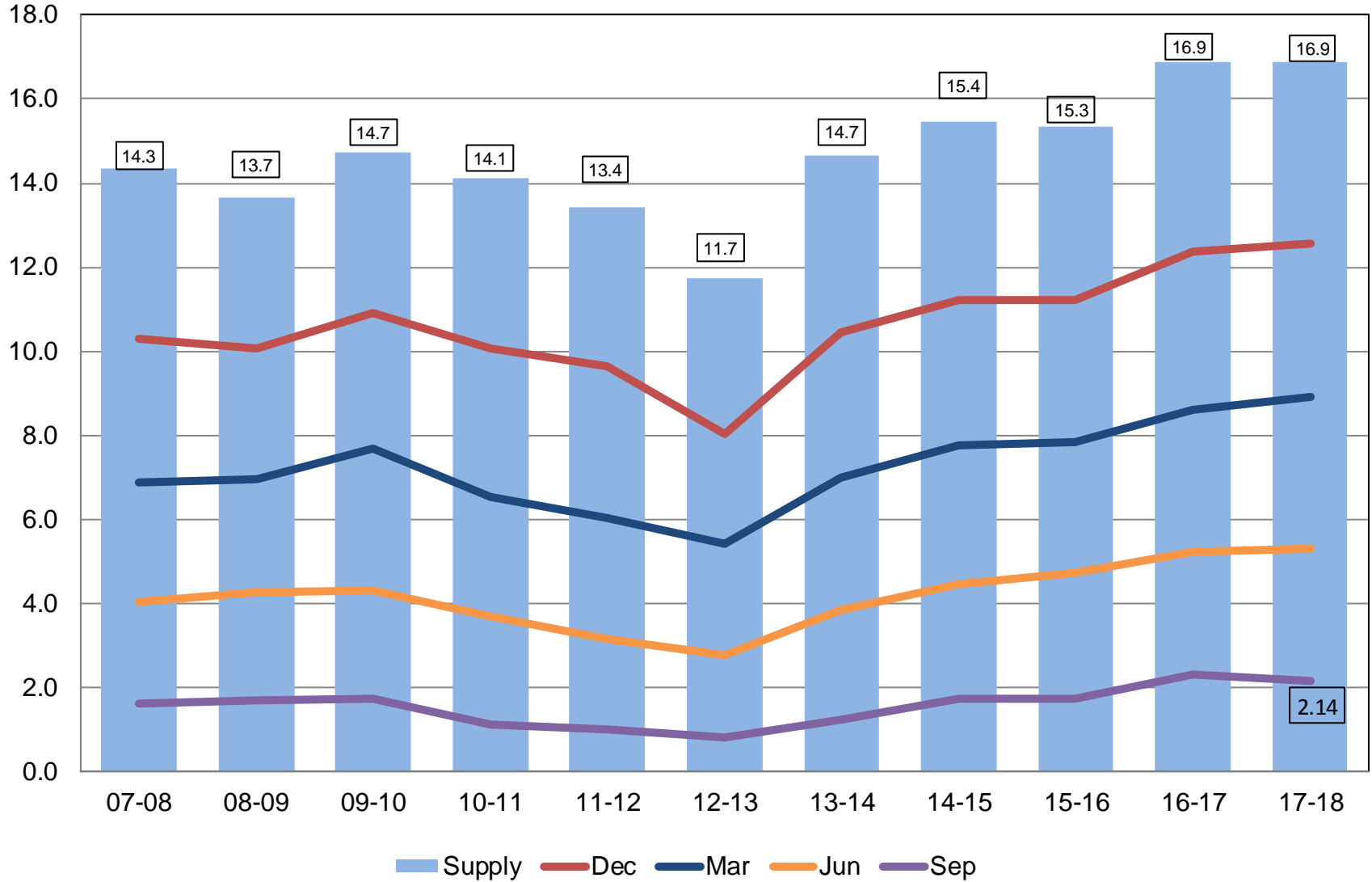


 NASS Forecast     Individual Industry Expectation



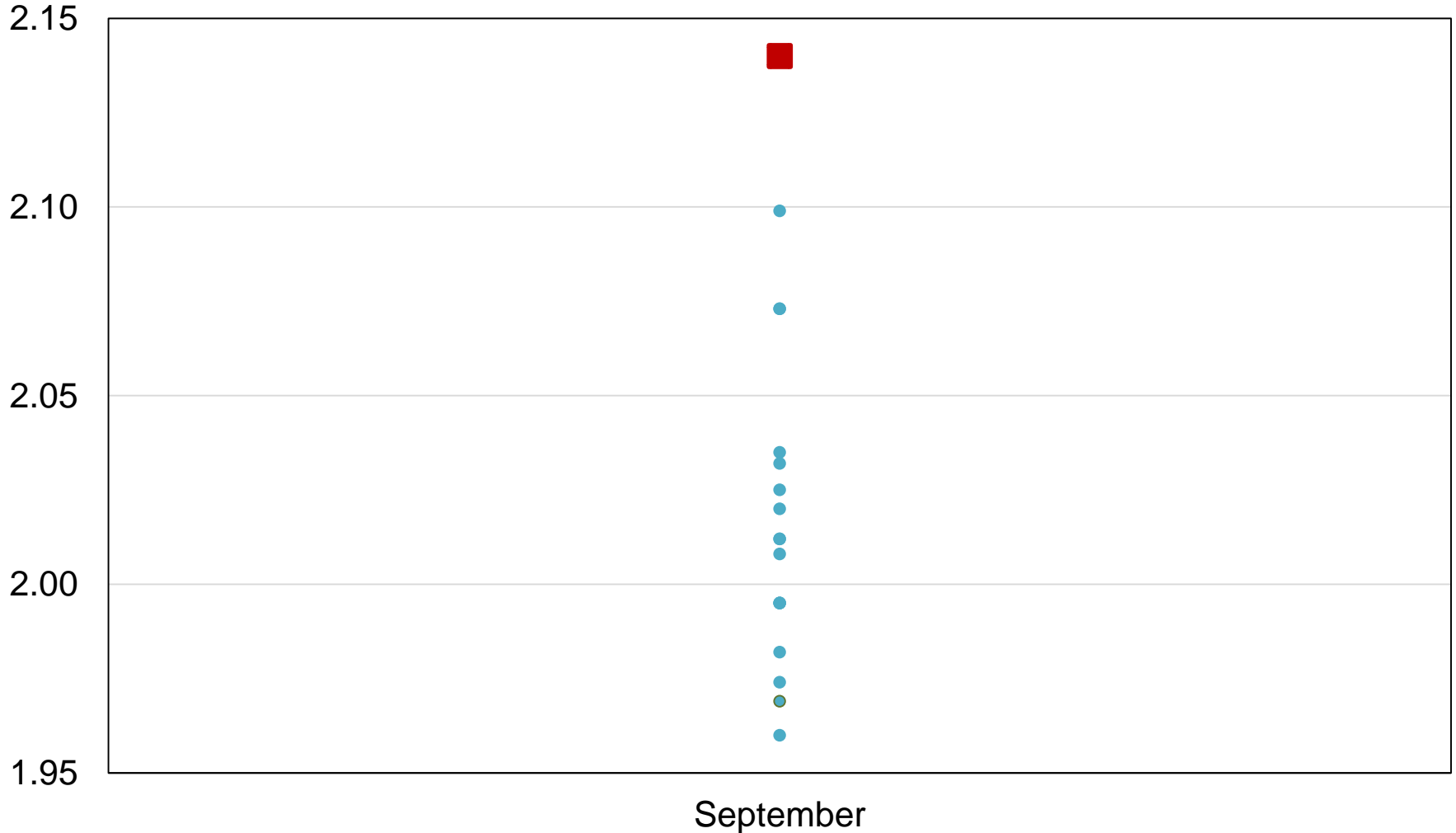
# Corn Stocks United States

Billion Bushels



# 2018 United States Corn Stocks Industry Expectations vs NASS

Billion Bushels

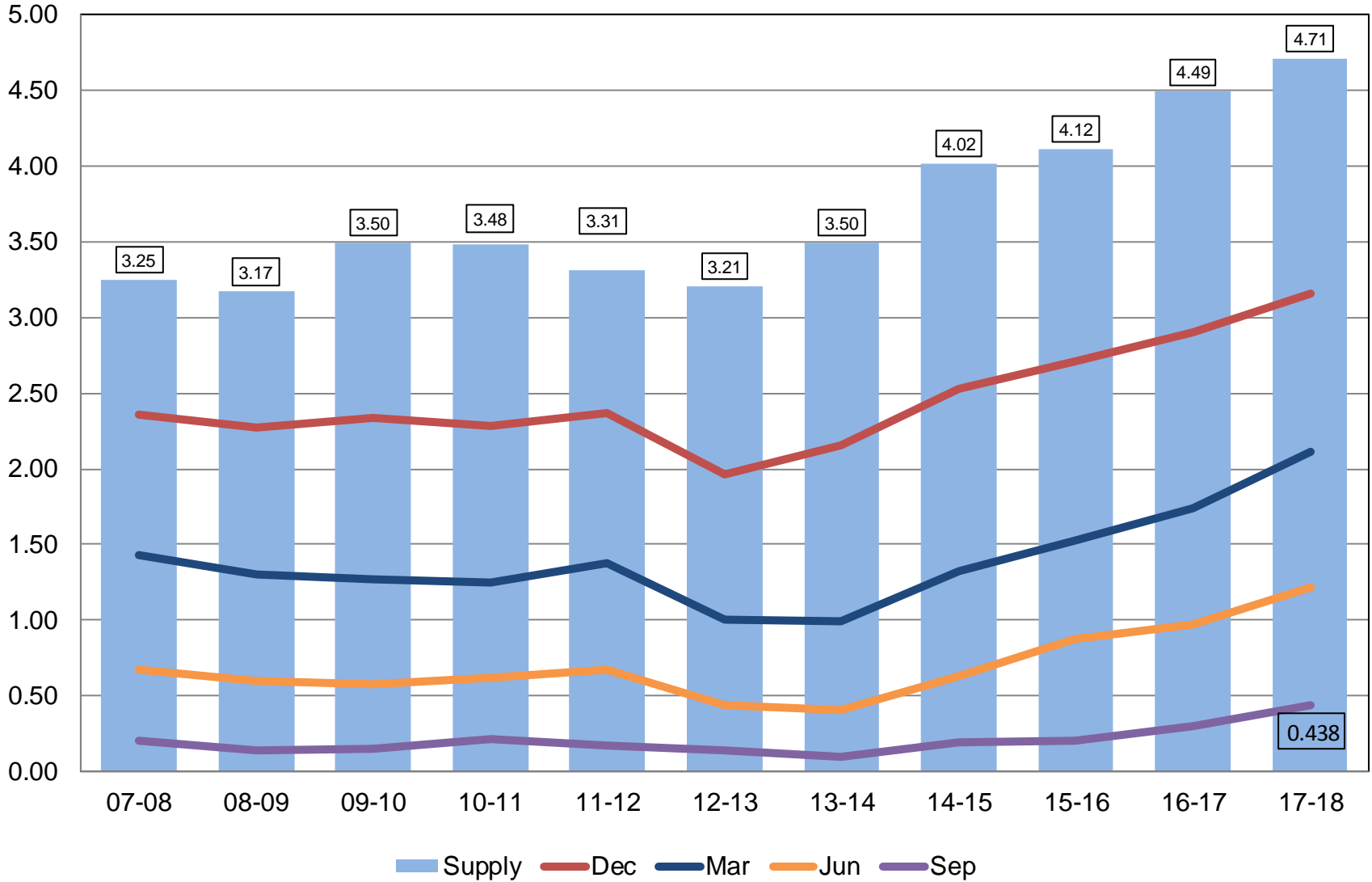


NASS Forecast      Individual Industry Expectation



# Soybean Stocks United States

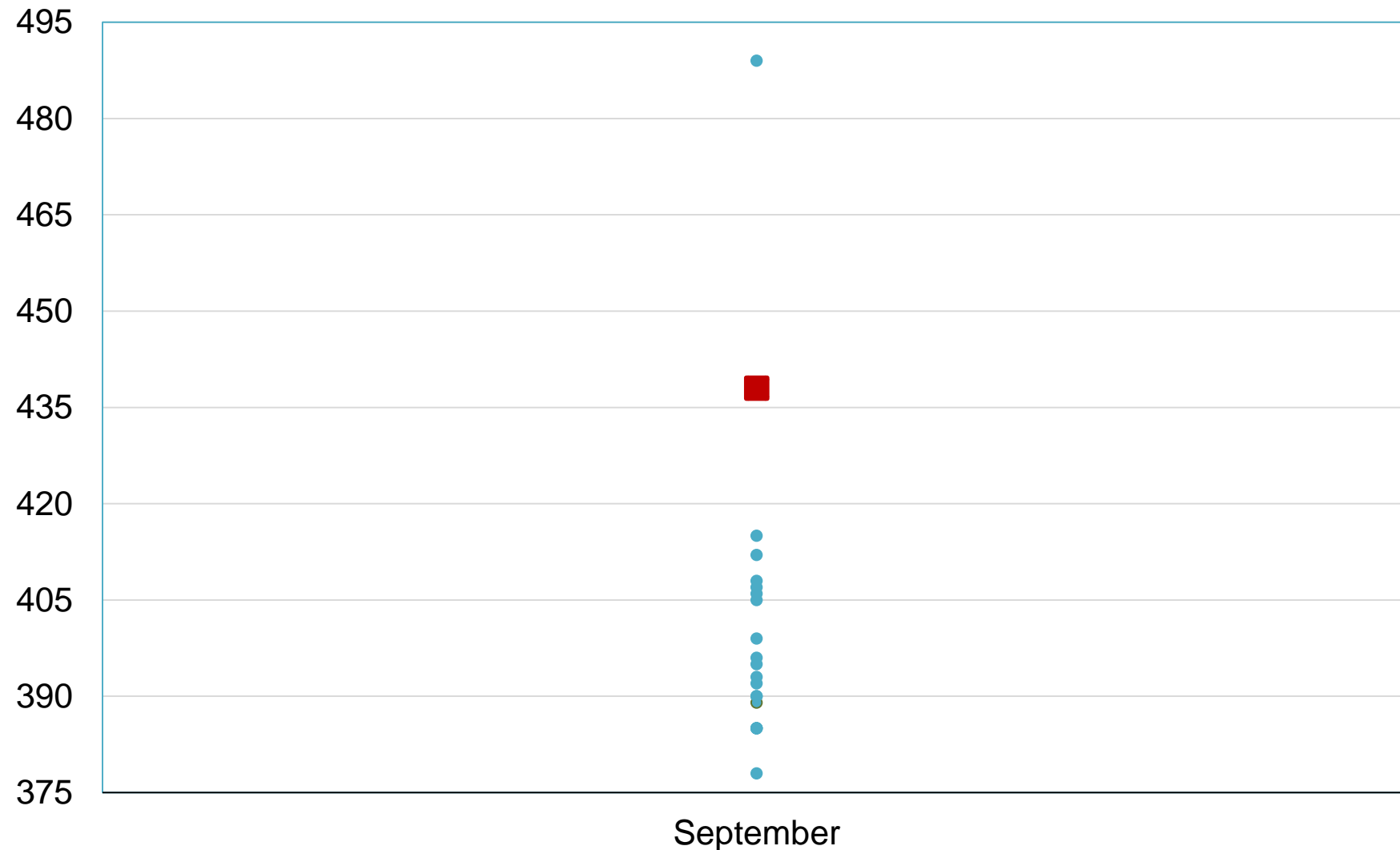
Billion Bushels





# 2018 United States Soybean Stocks Industry Expectations vs NASS

Million Bushels



 NASS Forecast       Individual Industry Expectation



# 2017 Soybean Crop

|                               | Previous Estimates     | Sept 28 Estimates | Change     |
|-------------------------------|------------------------|-------------------|------------|
|                               | <i>Million Bushels</i> |                   |            |
| Sept 1, 2017 Beginning Stocks | 302                    | 302               | NC         |
| 2017 Production               | 4,392                  | 4,411             | +19        |
| Imports                       | *22                    | *22               | NC         |
| <b>Total Supply</b>           | <b>4,716</b>           | <b>4,735</b>      | <b>+19</b> |
| Crushings                     | *2,055                 | *2,055            | NC         |
| Exports                       | *2,130                 | *2,130            | NC         |
| Seed                          | *104                   | *104              | NC         |
| Measured Disappearance        | *4,289                 | *4,289            | NC         |
| Ending Stocks                 | *395                   | 438               | +43        |
| Residual                      | 32                     | 8                 | -24        |

\*WAOB Forecast – September WASDE Report



# September 1, 2018 Grain Stocks

| Crop    | Unit   | September 2018 | % Change From Previous Estimate | % Change From Previous Year |
|---------|--------|----------------|---------------------------------|-----------------------------|
| Stocks  |        |                |                                 |                             |
| Barley  | Mil Bu | 175            | NA                              | -2.9                        |
| Oats    | Mil Bu | 74.9           | NA                              | +4.0                        |
| Sorghum | Mil Bu | 34.9           | NA                              | +4.2                        |





# September 1, 2018 Oilseed Stocks

| Crop          | Unit    | September 2018 | % Change From Previous Estimate | % Change From Previous Year |
|---------------|---------|----------------|---------------------------------|-----------------------------|
| Stocks        |         |                |                                 |                             |
| All Sunflower | Mil Lbs | 386            | NA                              | -34.5                       |
| Safflower     | Mil Lbs | 10.7           | NA                              | -42.6                       |
| Mustard Seed  | Mil Lbs | 9.30           | NA                              | +31.7                       |




# Upcoming Reports

| Release Date | Report Title                                   |
|--------------|--|
| October 1    | CAIR: Cotton, Fats & Oils, and Grain Crushings |
| October 11   | Crop Production<br>Cotton Ginnings             |
| October 19   | Cattle on Feed                                 |
| October 23   | Cotton Ginnings                                |
| October 26   | Rice Stocks                                    |
| October 30   | Ag Prices                                      |



# STAT CHAT SERIES

You can tweet  
questions in advance  
to [@usda\\_nass](https://twitter.com/usda_nass).



Join [@usda\\_nass](https://twitter.com/usda_nass) on Twitter using [#StatChat](https://twitter.com/hashtag/StatChat)  
to discuss the *Grain Stocks* and *Small Grains  
Summary* reports with Lance Honig.

## #STATCHAT



**FRIDAY, SEPT. 28 @ 1PM ET**



United States Department of Agriculture  
**National Agricultural Statistics Service**

---

---

**All Reports Available At**  
[www.nass.usda.gov](http://www.nass.usda.gov)

**For Questions**  
202-720-2127  
800-727-9540  
[nass@nass.usda.gov](mailto:nass@nass.usda.gov)