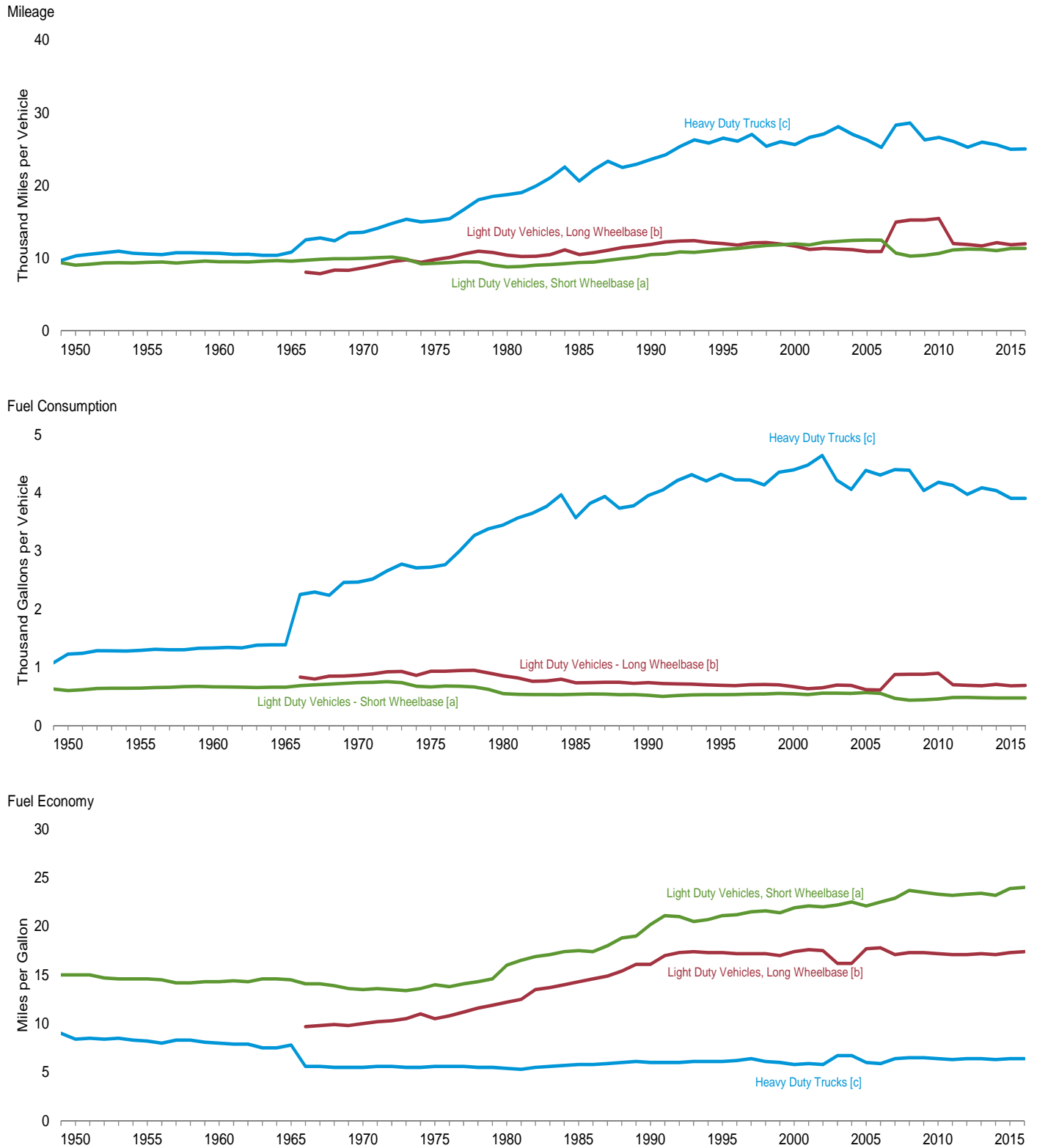


**Figure 1.8 Motor Vehicle Mileage, Fuel Consumption, and Fuel Economy, 1949-2016**



[a] Through 1989, data are for passenger cars and motorcycles. For 1990–2006, data are for passenger cars only. Beginning in 2007, data are for light-duty vehicles (passenger cars, light trucks, vans, and sport utility vehicles) with a wheelbase less than or equal to 121 inches.

[b] For 1966–2000, data are for vans, pickup trucks, and sport utility vehicles. Beginning in 2007, data are for light-duty vehicles (passenger cars, light trucks, vans, and sport utility vehicles) with a wheelbase greater than 121 inches.

[c] For 1949–1965, data are for single-unit trucks with 2 axles and 6 or more

tires, combination trucks, and other vehicles with 2 axles and 4 tires that are not passenger cars. For 1966–2006, data are for single-unit truck with 2 axles and 6 or more tires, and combination trucks. Beginning in 2007, data are for single-unit trucks with 2 axles and 6 or more tires (or a gross vehicle weight rating exceeding 10,000 pounds), and combination trucks.

Note: Through 1965, “Light-Duty Vehicles, Long Wheelbase” data are included in “Heavy-Duty Trucks.”

Web Page: <http://www.eia.gov/totalenergy/data/monthly/#summary>.

Source: Table 1.8.