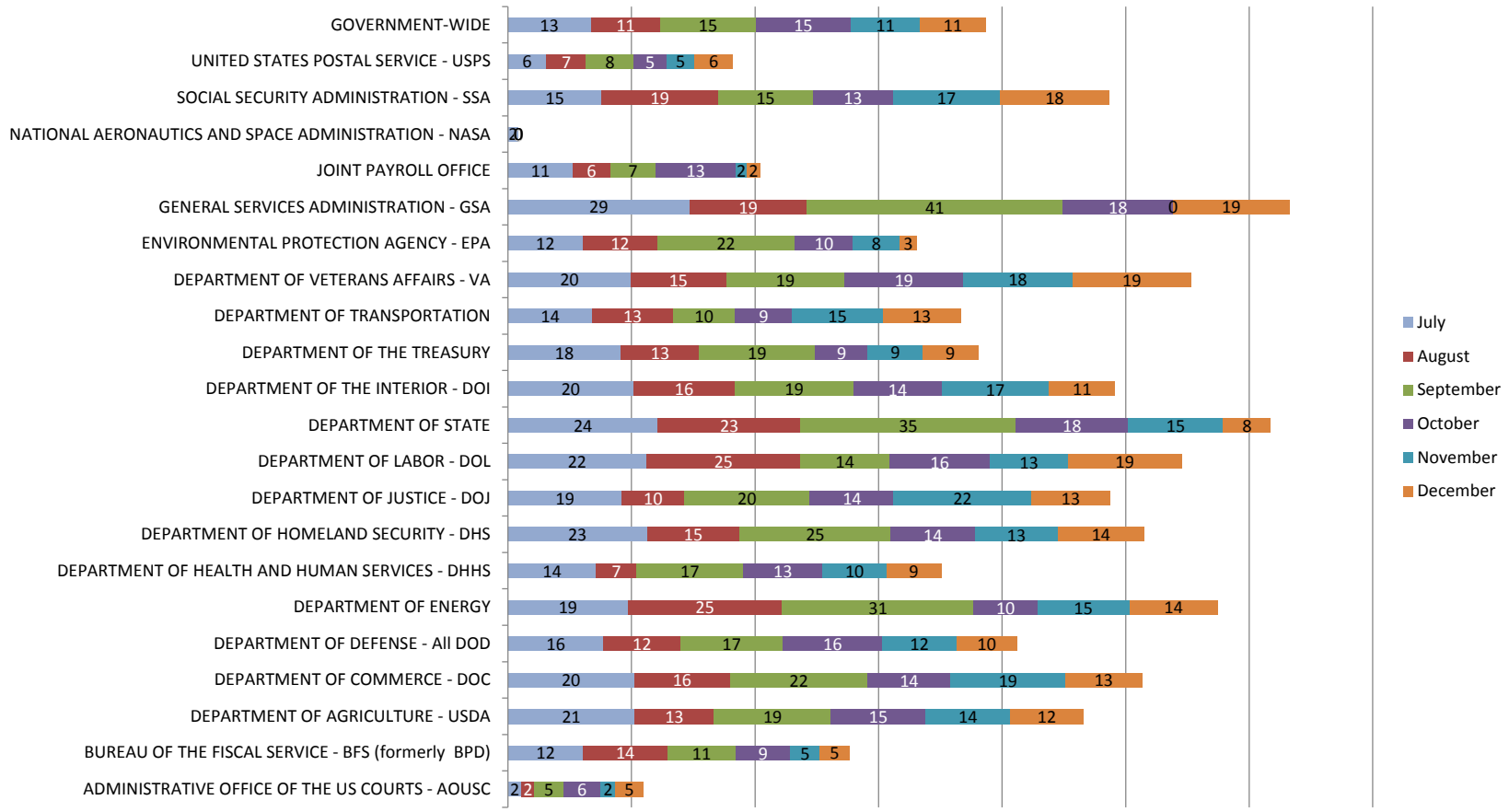


## Percentage of CSRS/FERS New Claims w/ Errors by Agency



Agency	July		August		September		October		November		December	
	# of Cases	% of Cases w/ Errors	# of Cases	% of Cases w/ Errors	# of Cases	% of Cases w/ Errors	# of Cases	% of Cases w/ Errors	# of Cases	% of Cases w/ Errors	# of Cases	% of Cases w/ Errors
ADMINISTRATIVE OFFICE OF THE US COURTS - AOUSC	89	2	48	2	43	5	84	6	84	2	66	5
BUREAU OF THE FISCAL SERVICE - BFS (formerly BPD)	41	12	22	14	27	11	34	9	21	5	21	5
DEPARTMENT OF AGRICULTURE - USDA	361	21	194	13	206	19	321	15	204	14	177	12
DEPARTMENT OF COMMERCE - DOC	103	20	64	16	63	22	89	14	65	19	48	13
DEPARTMENT OF DEFENSE - All DOD	2,129	16	1,577	12	1,671	17	1,726	16	1,575	12	1,268	10
DEPARTMENT OF ENERGY	67	19	36	25	29	31	39	10	47	15	21	14
DEPARTMENT OF HEALTH AND HUMAN SERVICES - DHHS	168	14	92	7	110	17	156	13	154	10	91	9

DEPARTMENT OF HOMELAND SECURITY - DHS	454	23	254	15	253	25	352	14	253	13	164	14
DEPARTMENT OF JUSTICE - DOJ	260	19	150	10	216	20	352	14	198	22	164	13
DEPARTMENT OF LABOR - DOL	49	22	28	25	42	14	55	16	48	13	27	19
DEPARTMENT OF STATE	37	24	26	23	23	35	22	18	26	15	26	8
DEPARTMENT OF THE INTERIOR - DOI	355	20	159	16	150	19	176	14	149	17	112	11
DEPARTMENT OF THE TREASURY	387	18	197	13	214	19	371	9	261	9	188	9
DEPARTMENT OF TRANSPORTATION	190	14	108	13	109	10	153	9	116	15	95	13
DEPARTMENT OF VETERANS AFFAIRS - VA	995	20	747	15	812	19	973	19	787	18	485	19
ENVIRONMENTAL PROTECTION AGENCY - EPA	58	12	33	12	36	22	42	10	40	8	36	3
GENERAL SERVICES ADMINISTRATION - GSA	34	29	21	19	29	41	28	18	19	0	16	19
JOINT PAYROLL OFFICE	38	11	33	6	55	7	54	13	57	2	48	2
NATIONAL AERONAUTICS AND SPACE ADMINISTRATION - NASA	59	2	29	0	20	0	36	0	33	0	35	0
SOCIAL SECURITY ADMINISTRATION - SSA	171	15	117	19	130	15	201	13	167	17	102	18
UNITED STATES POSTAL SERVICE - USPS	3,690	6	1,943	7	1,705	8	2,116	5	1,667	5	1,026	6
<b>GOVERNMENT-WIDE</b>	<b>9,942</b>	<b>13</b>	<b>6,031</b>	<b>11</b>	<b>6,096</b>	<b>15</b>	<b>6,096</b>	<b>15</b>	<b>6,145</b>	<b>11</b>	<b>4,329</b>	<b>11</b>

\*\*The table above shows the retirement application error rates for agencies with at least 15 cases reviewed for the month indicated. The table shows the number of cases for the agency and the percent of cases with errors. If a case has more than one error, it is counted as a single case with an error. The Government-wide results are also shown.