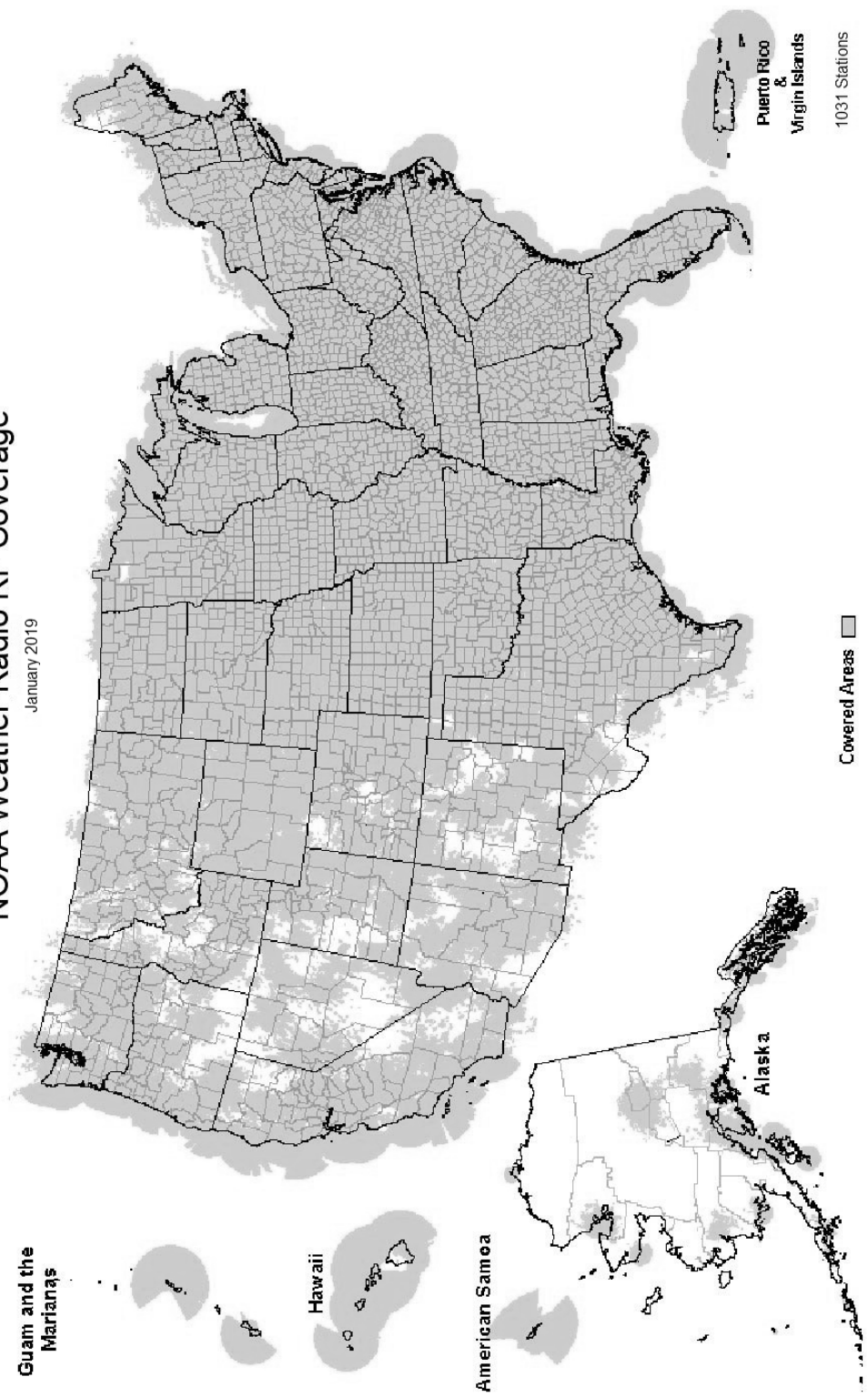
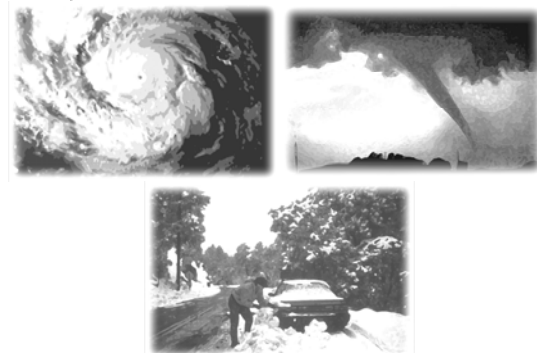


NOAA Weather Radio RF Coverage

January 2019



NOAA/PA 94062
Rev January 2019



The Voice of NOAA's National Weather Service

< Over 1000 Transmitters >

Broadcasting Continuous Weather Information on the Following Frequencies:

- 162.400 MHz
- 162.425 MHz
- 162.450 MHz
- 162.475 MHz
- 162.500 MHz
- 162.525 MHz
- 162.550 MHz

U.S. Department of Commerce
National Oceanic and Atmospheric Administration
National Weather Service

<http://www.weather.gov/nwr/>

NOAA WEATHER RADIO

The Voice of NOAA's National Weather Service

<http://www.weather.gov/nwr>

NOAA Weather Radio is a service of the National Oceanic and Atmospheric Administration (NOAA) of the U.S. Department of Commerce. As the "voice of the National Weather Service," it provides continuous broadcasts (24 hours a day) of the latest weather information from local National Weather Service offices. Weather messages are repeated every 4 to 6 minutes and are routinely updated every 1 to 6 hours or more frequently in rapidly changing local weather or if a nearby natural hazardous or manmade condition exists.



The regular broadcasts are specifically tailored to weather information needs of the people within the service area of the transmitter. For example, in addition to general weather information, stations in coastal areas provide information of interest to mariners. Other specialized information, such as hydrological forecasts and other climate data may be broadcast.

During severe weather, National Weather Service forecasters can interrupt the routine weather broadcasts and insert special warning messages concerning imminent threats to life and property. The forecaster can also add special signals to warnings that trigger "alerting" features of specially equipped receivers. In the simplest case, this signal activates audible or visual alarms, indicating that an emergency condition exists within the broadcast areas of the station being monitored, and alerts the listener to turn up the volume and stay tuned for more information. More sophisticated receivers are automatically turned on and set to an audible volume when an alert is received.

In the most sophisticated alerting system, NOAA Weather Radio Specific Area Message Encoding (SAME), digital coding is employed to activate only those special receivers programmed for specific emergency conditions in specific area, typically a county. SAME can activate specially equipped radio and cable television receivers and provide a short text message that identifies the location and type of emergency. SAME is the primary activator for the FCC Emergency Alert System (EAS).

To program NWR SAME receivers with the proper county(s) and marine area(s) of choice, you need to know the 6-digit SAME code number(s) for that county(s). Once you have your code number(s), follow the manufacturer's directions for programming your NWR SAME receiver. You can obtain your SAME code numbers by dialing:

888-NWR-SAME (888-697-7263) – Voice & TTY/TTD Accessible

Under a January 1975 White House policy statement, NOAA Weather Radio was designated the sole Government-operated radio system to provide direct warning into private homes for both

<p>PUERTO RICO Maricao162.550 San Juan162.400</p> <p>RHODE ISLAND Providence162.400</p> <p>SOUTH CAROLINA Aiken162.450 Aynor162.400 Barnwell162.500 Beaufort162.450 Charleston162.550 Cheraw162.450 Columbia162.400 Cross162.475 Florence162.550 Georgetown162.500 Greenville162.550 Jasper County162.400 Kirksey162.425 Orangeburg162.525 Rock Hill162.425 Sumter162.425</p> <p>SOUTH DAKOTA Aberdeen162.475 Arlington162.525 Faith162.475 Firesteel162.425 Hot Springs162.425 Lead162.525 Lowry162.500 Mitchell162.450 Philip162.450 Pickstown162.425 Pierre162.400 Porcupine162.500 Rapid City162.550 Reliance162.525 Sioux Falls162.400 South Shore162.425 Wessington162.550 White River162.550</p> <p>TENNESSEE Bristol162.550 Centerville162.450 Chattanooga162.550 Clarksville162.500 Clifton162.500 Cookeville162.400 Dyersburg162.500 Hickman162.500 Jackson162.550 Knoxville162.475 La Follette162.450 Lafayette162.525 Lawrenceburg162.425 Lobelville162.525 Memphis162.475 Nashville162.550 Shelbyville162.475 Spencer162.450 Vale162.450 Waverly162.400 Winchester162.525</p> <p>TEXAS Abilene162.400 Alpine162.550 Amarillo162.550 Austin162.400</p>	<p>Bay City162.425 Beaumont162.475 Big Spring162.475 Borger162.400 Brownsville162.550 Bryan162.550 Burkeville162.425 Carrizo Springs162.550 Center162.525 Childress162.525 Cisco162.500 Coleman162.475 Corpus Christi162.550 Corsicana162.525 Cumby162.500 Dallas162.400 Del Rio162.400 D'Hanis162.525 Dickens162.500 Dilley162.500 El Paso162.475 El Paso Spanish162.550 Fort Worth162.550 Galveston162.550 Gilmer162.425 Gonzales162.525 Guadalupe Mt Nat'l. Park162.525 Junction162.475 Kerrville162.450 La Grange162.500 Laredo162.550 Llano162.425 Lubbock162.400 Lufkin162.550 Marietta162.525 Miami162.450 Midland/Odessa162.400 Milano162.525 Mineral Wells162.525 Muenster162.425 New Taiton162.450 Onalaska162.500 Ozona162.500 Palestine162.450 Paris162.550 Pecos162.450 Perryton162.475 Pharr162.400 Pharr Spanish162.475 Plainview162.450 Port O'Connor162.475 Richland Springs162.525 Richmond162.475 Rio Grande City162.425 Riviera162.525 San Angelo162.550 San Antonio162.550 Seguin162.475 Seminole162.425 Sherman162.475 Stephenville162.450 Summerfield162.500 Sweetwater162.425 Texarkana162.550 Three Rivers162.450 Throckmorton162.425 Tomball162.400 Tyler162.475 Uvalde162.425 Victoria162.400 Waco162.475 Wichita Falls162.475</p>	<p>UTAH Charleston162.400 Clarksburg162.550 Garfield162.500 Gilbert162.475 Greggs Knob162.500 Hinton162.425 Monterville162.525 Moorefield162.400 Morgantown162.475 Sutton162.450</p> <p>WISCONSIN Ashland162.525 Baraboo162.450 Black River Falls162.500 Coloma162.400 Crandon162.450 Dubuque162.400 Fond Du Lac162.500 Green Bay162.550 Gresham162.500 Janesville162.425 Ladysmith162.550 Madison162.550 Menomonie162.400 Milwaukee162.400 New London162.525 Park Falls162.500 Prairie Du Chien162.500 Racine162.450 Rhinelander162.400 Richland Center162.475 Sheboygan162.525 Sister Bay162.425 Spooner162.475 Tomah162.525 Wausau162.475 Wausaukee162.400 Winona162.425 Withee162.425</p> <p>VERMONT Burlington162.400 Castleton162.500 St. Johnsbury162.425 Windsor162.475</p> <p>VIRGIN ISLANDS St. Croix162.500</p> <p>VIRGINIA Accomack162.525 Coveseville162.450 Fredericksburg162.425 Heathsville162.400 Lynchburg162.550 Manassas162.550 Norfolk162.550 Richlands162.425 Richmond162.475 Roanoke162.475 Sand Mtn.162.450 South Boston162.525</p> <p>WASHINGTON Astoria162.400 Capitol Peak162.475 Cle Elum162.400 Davis Peak162.525 Dayton162.525 Forks162.425 H Street - Blaine Area162.525 Neah Bay162.550 Okanogan162.525 Plymouth162.425 Puget Sound Marine162.425 Randle162.425 Richland162.450 Seattle162.550 Spokane162.400 Wenatchee162.475 Yakima162.550</p> <p>WEST VIRGINIA Backbone Mountain162.450 Beckley162.550</p> <p>WYOMING Afton162.475 Casper162.400 Cheyenne162.550 Cody162.400 Dubois162.450 Elk Plaza162.425 Evanston162.450 Gillette162.500 Glendo162.450 Grant Village162.450 Jackson162.525 Kaycee162.550 Kemmerer162.525 Lander162.475 Newcastle162.475 Pinedale162.500 Rawlins162.425 Rock Springs162.550 Sheridan162.475 Thermopolis162.500 Worland162.525</p>
--	--	--

The National Weather Service requests your assistance in reporting any outages of NOAA Weather Broadcast Stations.

Please use our Toll Free Number (888) 697-7263 or send an Email to nwroutage@noaa.gov to report the outage.

Clinton.....	162.500	Norfolk	162.550
Columbia.....	162.400	North Platte.....	162.550
Crocker.....	162.500	Omaha.....	162.400
Doniphan.....	162.450	Ord.....	162.525
El Dorado Springs.....	162.475	Oshkosh.....	162.525
Eldon.....	162.550	Scottsbluff.....	162.475
Fredericktown.....	162.500	Shubert.....	162.500
Gainesville.....	162.425	Sidney.....	162.500
Hannibal.....	162.475	Superior.....	162.525
Hermitage.....	162.450	Trenton.....	162.500
Jamestown.....	162.425	Valentine.....	162.450
Joplin.....	162.550	Yankton.....	162.500
Kansas City.....	162.550		
La Plata.....	162.525		
Lancaster.....	162.550		
Maryville.....	162.425		
Medill.....	162.450		
Neosho.....	162.450		
Piedmont.....	162.425		
Springfield.....	162.400		
St. Louis.....	162.550		
Summersville.....	162.475		
Trenton.....	162.500		
Wardell.....	162.525		
West Plains.....	162.525		

MONTANA			
Baker.....	162.550		
Belgian Hill.....	162.500		
Billings.....	162.550		
Bozeman.....	162.500		
Broadus.....	162.425		
Browning.....	162.525		
Butte.....	162.550		
Circle.....	162.550		
Dillon.....	162.475		
Ekalaka.....	162.475		
Forsyth.....	162.525		
Glasgow.....	162.400		
Glendive.....	162.475		
Glentana.....	162.525		
Great Falls.....	162.550		
Hardin.....	162.450		
Havre.....	162.400		
Helena.....	162.400		
Jordan.....	162.500		
Kalispell.....	162.550		
Lewistown.....	162.500		
Livingston.....	162.525		
Malta.....	162.475		
Miles City.....	162.400		
Missoula.....	162.400		
Plentywood.....	162.475		
Poplar.....	162.425		
Ryegate.....	162.450		
Scobey.....	162.450		
Wibaux.....	162.500		
Winnett.....	162.400		

NEBRASKA			
Albion.....	162.500		
Bassett.....	162.475		
Beatrice.....	162.450		
Cambridge.....	162.525		
Chadron.....	162.525		
Columbus.....	162.450		
Grand Island.....	162.400		
Holdrege.....	162.475		
Lexington.....	162.425		
Lincoln.....	162.475		
Merna.....	162.500		
Merriman.....	162.400		
Mullen.....	162.425		

NEVADA			
Battle Mtn.....	162.425		
Bullhead City.....	162.500		
Elko.....	162.550		
Ely.....	162.400		
Eureka.....	162.550		
Fernley.....	162.450		
Hawthorne.....	162.475		
Jackpot.....	162.500		
Las Vegas.....	162.550		
Owyhee.....	162.450		
Pahrump.....	162.400		
Reno.....	162.550		
Tonopah.....	162.400		
Winnemucca.....	162.400		

NEW HAMPSHIRE			
Clarksville.....	162.400		
Concord.....	162.400		
Deerfield.....	162.450		
Hanover.....	162.525		
Holderness.....	162.550		
Mt. Washington.....	162.500		
Pack Monadnock.....	162.525		
NEW JERSEY			
Atlantic City.....	162.400		
Hardyston.....	162.500		
Southard.....	162.450		

NEW MEXICO			
Albuquerque.....	162.400		
Artesia.....	162.425		
Carlsbad.....	162.475		
Des Moines.....	162.550		
Farmington.....	162.475		
Hobbs.....	162.400		
Las Cruces.....	162.400		
Portales.....	162.475		
Roswell.....	162.450		
Ruidoso.....	162.550		
Santa Fe.....	162.550		
Silver City.....	162.425		

NEW YORK			
Albany.....	162.550		
Binghamton.....	162.475		
Buffalo.....	162.550		
Call Hill.....	162.425		
Cattaraugus.....	162.425		
Cooperstown.....	162.450		
Elmira.....	162.400		
Frewsburg.....	162.525		
Gore Mtn.....	162.450		
Highland.....	162.475		
Ithaca.....	162.500		
Lyons.....	162.475		
Middleville.....	162.425		
Mt. Washington.....	162.450		
New York City.....	162.550		

Norwich.....	162.525	Toledo.....	162.500
Riverhead.....	162.475	Youngstown.....	162.500
Rochester.....	162.400		
Spencerport.....	162.525		
Stamford.....	162.400		
Syracuse.....	162.550		
Walton.....	162.425		
Watertown.....	162.475		
White Hill.....	162.525		

NORTH CAROLINA			
Asheville.....	162.400		
Buck Mountain.....	162.500		
Cape Hatteras.....	162.475		
Chapel Hill.....	162.550		
Charlotte.....	162.475		
Ellerbe.....	162.400		
Garner.....	162.450		
Henderson.....	162.500		
Linville.....	162.450		
Mamie.....	162.425		
Margarettsville.....	162.450		
Mooreville.....	162.525		
Mount Jefferson.....	162.500		
New Bern.....	162.400		
Robbinsville.....	162.525		
Rocky Mount.....	162.475		
Saint Pauls.....	162.475		
Warsaw.....	162.425		
Windsor.....	162.525		
Winnabow.....	162.550		
Winston-Salem.....	162.400		

NORTH DAKOTA			
Bismarck.....	162.475		
Cavalier.....	162.450		
Dickinson.....	162.400		
Fargo.....	162.475		
Fort Ransom.....	162.525		
Grand Forks.....	162.475		
Jamestown.....	162.550		
Langdon.....	162.500		
Minot.....	162.400		
New Town.....	162.525		
Petersburg.....	162.400		
Rolla.....	162.475		
Scranton.....	162.525		
Sheyenne.....	162.525		
Steele.....	162.400		
Webster.....	162.425		
Williston.....	162.550		
Willow City.....	162.450		

NORTHERN MARIANA ISLANDS			
Saipan.....	162.550		

OHIO			
Akron.....	162.400		
Athens.....	162.425		
Bridgeport.....	162.525		
Carey.....	162.525		
Chillicothe.....	162.500		
Cleveland.....	162.550		
Columbus.....	162.550		
Dayton.....	162.475		
Grafton.....	162.500		
High Hill.....	162.475		
Lima.....	162.400		
Mansfield.....	162.450		
Marietta.....	162.400		
New Philadelphia.....	162.425		
Otway.....	162.525		
Sandusky.....	162.400		

Toledo.....	162.500
Youngstown.....	162.500

OKLAHOMA	
Altus.....	162.425
Antlers.....	162.400
Ardmore.....	162.525
Atoka.....	162.500
Bartlesville.....	162.425
Broken Bow.....	162.450
Chickasha.....	162.450
Clinton.....	162.525
Enid.....	162.475
Grove.....	162.525
Guymon.....	162.500
Lawton.....	162.550
McAlester.....	162.475
Oklahoma City.....	162.400
Oktaha.....	162.525
Ponca City.....	162.450
Stillwater.....	162.500
Tulsa.....	162.550
Wewoka.....	162.550
Woodward.....	162.500

OREGON	
Bend/Redmond.....	162.500
Brookings.....	162.550
Burns Butte.....	162.475
Cape Blanco.....	162.425
Carney Butte.....	162.475
Coos Bay.....	162.400
Eugene.....	162.400
Florence.....	162.500
Fossil.....	162.550
Heppner.....	162.425
John Day.....	162.500
Klamath Falls.....	162.550
Medford.....	162.400
Mt Hebo.....	162.525
Mt. Ashland.....	162.475
Neahkahnie.....	162.425
Newport.....	162.550
Portland.....	162.550
Reedsport.....	162.525
Roseburg.....	162.550
Salem.....	162.475
Spout Springs.....	162.400
The Dalles.....	162.400
Tillamook.....	162.475

PENNSYLVANIA	
Allentown.....	162.400
Altoona.....	162.425
Clearfield.....	162.550
Coudersport.....	162.500
Erie.....	162.400
Harrisburg.....	162.550
Hibernia Park.....	162.425
Honesdale.....	162.450
Huntingdon.....	162.525
Johnstown.....	162.400
Meadville.....	162.475
Parker.....	162.425
Philadelphia.....	162.475
Pittsburgh.....	162.550
Reynoldsville.....	162.500
State College.....	162.475
Towanda.....	162.525
Warren.....	162.450
Wellsboro.....	162.475
Wilkes-Barre.....	162.550
Williamsport.....	162.400

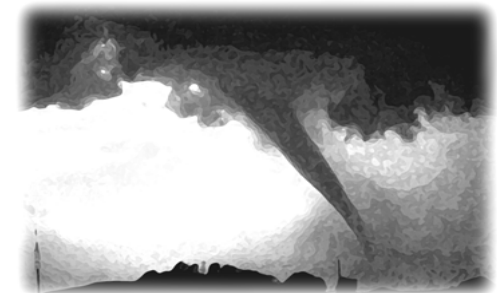
natural disasters and nuclear attack. This concept has been expanded to include warnings for all hazardous conditions that pose a threat to life and safety, both at a local and national level. As a result, NOAA Weather Radio is being better integrated with other National Weather Service systems to provide state and local emergency managers and other warning providers better access to local weather forecast offices, allowing hazard warnings of all types to be broadcast on NOAA Weather Radio within seconds

NOAA Weather Radio currently broadcasts from 1031 stations in fifty states, Puerto Rico, the U.S. Virgin Islands, American Samoa, Guam, and Saipan on seven frequencies in the VHF band, ranging from 162.400 to 162.550 megahertz (MHz). These frequencies are outside the normal AM or FM broadcast bands.

Special radios that receive only NOAA Weather Radio, both with and without special alerting features, are available from numerous manufacturers. In addition, other manufacturers are including NWR capability in a variety of receivers. NOAA Weather Radio capability is currently available on automobile, aircraft, marine, citizens band, and standard AM/FM radios as well as communications receivers, transceivers, scanners, and cable TV.

By nature and design, NOAA Weather Radio coverage is limited to an area within 40 miles of the transmitter. The quality of reception is dictated by transmitter distance, local terrain, and the quality and location of the receiver. In general, those using a high quality receiver on flat terrain or at sea can expect reliable reception beyond 40 miles. Those with standard receivers, surrounded by large buildings in cities and those in mountain valleys may experience little or no reception at considerably less than 40 miles. If possible, a receiver should be tested in the location where it will be used prior to purchase.

NOAA Weather Radio is directly available to a large portion of the U.S. population. The National Weather Service is currently engaged in a program to increase coverage to at least 95 percent of the population.



If you have a question regarding the technical aspects of NOAA Weather Radio such as transmitter location, reception, and characteristics or if you are interested in becoming a partner with the National Weather Service to identify or provide local funding and/or facilities for the installation of a NOAA Weather Radio transmitter, please contact your local National Weather Service Office or send a letter to:

National Weather Service
 Attn: Dissemination Systems Branch, W/OPS17
 1325 East-West Highway
 Silver Spring, MD 20910

