

## USGS Science Center for Coastal and Marine Geology Located in Woods Hole, MA

The Woods Hole Coastal and Marine Geology Team is one of three marine teams that conduct research within the USGS Coastal and Marine Geology Program. The team is located on WHOI's Quissett Campus. The team has a staff of about 100, including 24 research scientists and 75 scientific and administrative support staff. USGS earth scientists explore and study many aspects of the underwater areas between shorelines and the deep ocean, off the U.S. East Coast, the Gulf of Mexico, and in parts of the Caribbean and Great Lakes.



### Ongoing Research

- Boston Harbor
- Massachusetts Seafloor Mapping
- Benthic Habitats
- Stellwagen Bank
- Marine Invasive Species
- Seabed Analyses
- Gas Hydrates
- New York Bight
- Long Island Sound
- National Assessment of Coastal Vulnerability
- North Carolina
- Coastal Vulnerability of National Parks
- Glacier Studies
- Lake Mead
- Aggregates
- Gulf of Mexico
- South Carolina
- Caribbean
- Coastal Sediment Transport
- Coastal Erosion

### News



In mid-June 2004, researchers from the Woods Hole Oceanographic Institution (WHOI) and the U.S. Geological Survey (USGS) participated in a 5-day cruise aboard the research vessel Pelican to investigate gas-hydrate mounds in the northern Gulf of Mexico.- MORE



In May 2004, **Dann Blackwood, Brian Andrews, Barry Irwin** (all of USGS, Woods Hole), and **Seth Ackerman** (CZM, Woods Hole) conducted a remote sea-floor ground-truthing survey in the South Essex Ocean Sanctuary, using a new version of the successful SEABOSS (SEABed Observation and Sampling System).- MORE



The U.S. Geological Survey (USGS)'s Coastal and Marine Geology Program's Internet Map Server (IMS), maintained by **Valerie Paskevich** at the USGS Woods Hole Science Center, is highlighted in "What's New" on the Environmental Systems Research Institute (ESRI)'s Geography Network.- MORE



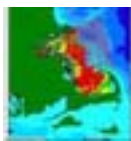
Members of the U.S. Geological Survey (USGS)'s Woods Hole Science Center dive team (**Dann Blackwood, Michael Casso, and Rick Rendigs**) successfully completed emplacement and recovery of "seepage samplers" in the offshore sediment of Ashumet Pond. - MORE

### Other CMG Centers

- Coastal and Marine Geology
- St. Petersburg, FLA
- Menlo Park, CA

### Explore

**GIS information** - Our interactive map server with displays on various information layers from a number of USGS research programs.



**Marine Realms Information Bank** - MRIB is a distributed geolibrary that provides access to information about oceanic and coastal environments.

**Photographs** - a collection of photographs documenting sea floor characteristics and operations in the field.

### Current Activities

### Questions??

Field Activity  
Schedule

What is Marine  
Geology?

Software  
Developed at  
USGS Woods  
Hole Science  
Center

What is USGS?

Why are we in  
Woods Hole?

Animations /  
Movies

Geologic History  
of Cape Cod

Make Your Own  
Map

Ask a Geologist

Outreach

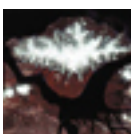
Search for  
Information

News (Sound  
Waves)

### Recent Publications



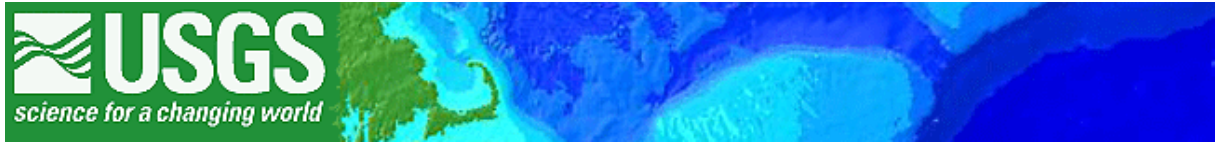
Coastal Vulnerability Assessment of Olympic National Park to Sea-Level Rise



Satellite Image Atlas of Glaciers of the World -- North America



Maps Showing the Stratigraphic Framework of South Carolina's Long Bay from Little River to Winyah Bay



US Geological Survey - Woods Hole Science Center

