

The Birth of Nuclear Power



Part of the EBR-I team posing in front of the reactor facility's chalkboard where their historic achievement was recorded.

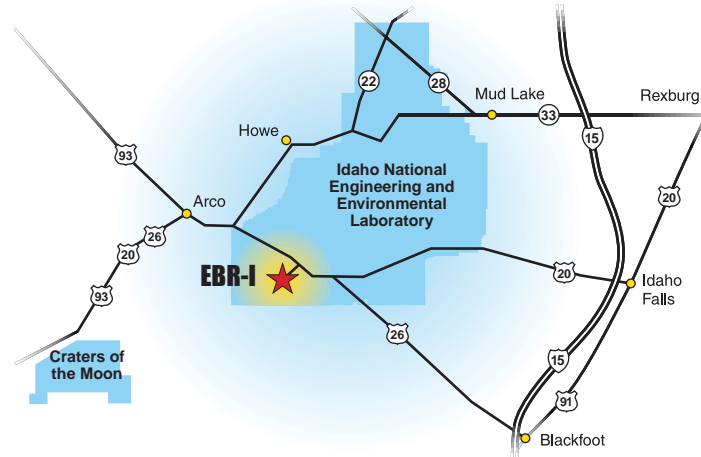
The first production of usable electric power from a nuclear reactor occurred in December 1951 at the National Reactor Testing Station in Southeast Idaho, now known as the Department of Energy's

Idaho National Engineering and Environmental Laboratory. Since then, more than 50 other pioneering nuclear reactors have been designed and built at the Idaho site.



This bulb is one of four lit by nuclear-generated electricity in 1951.

How to get there...



Distance in miles to EBR-I road junction from:

Arco	18
Blackfoot	40
Craters of the Moon	46
Idaho Falls	50

Come see one of Idaho's historic landmarks...

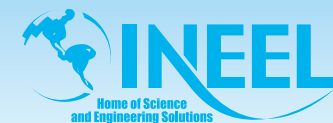
EBR-I



PN94-0613-01-13

Experimental Breeder Reactor-I (EBR-I) generated the world's first usable amount of electricity from nuclear energy in December 1951.

The INEEL is a U.S. Department of Energy National Laboratory
Operated by Bechtel BWXT Idaho, LLC.



An Energy Landmark

Have you ever seen a nuclear reactor? Ever wonder how electricity is generated from nuclear energy? Satisfy your curiosity by visiting the Experimental Breeder Reactor-I (EBR-I) visitor center, located on U.S. Highway 20-26 between Idaho Falls and Arco (see map on back).

The facility, a National Historic Landmark where usable electricity was first generated from nuclear energy in 1951, is open to the public from Memorial Day weekend through Labor Day weekend—seven days a week—from 9 a.m. to 5 p.m. Admission is free.

You'll see four nuclear reactors, including two aircraft nuclear propulsion prototypes, a reactor control room, remote handling devices for radioactive materials, radiation detection equipment, and much more. You'll learn how electricity is produced from splitting atoms and

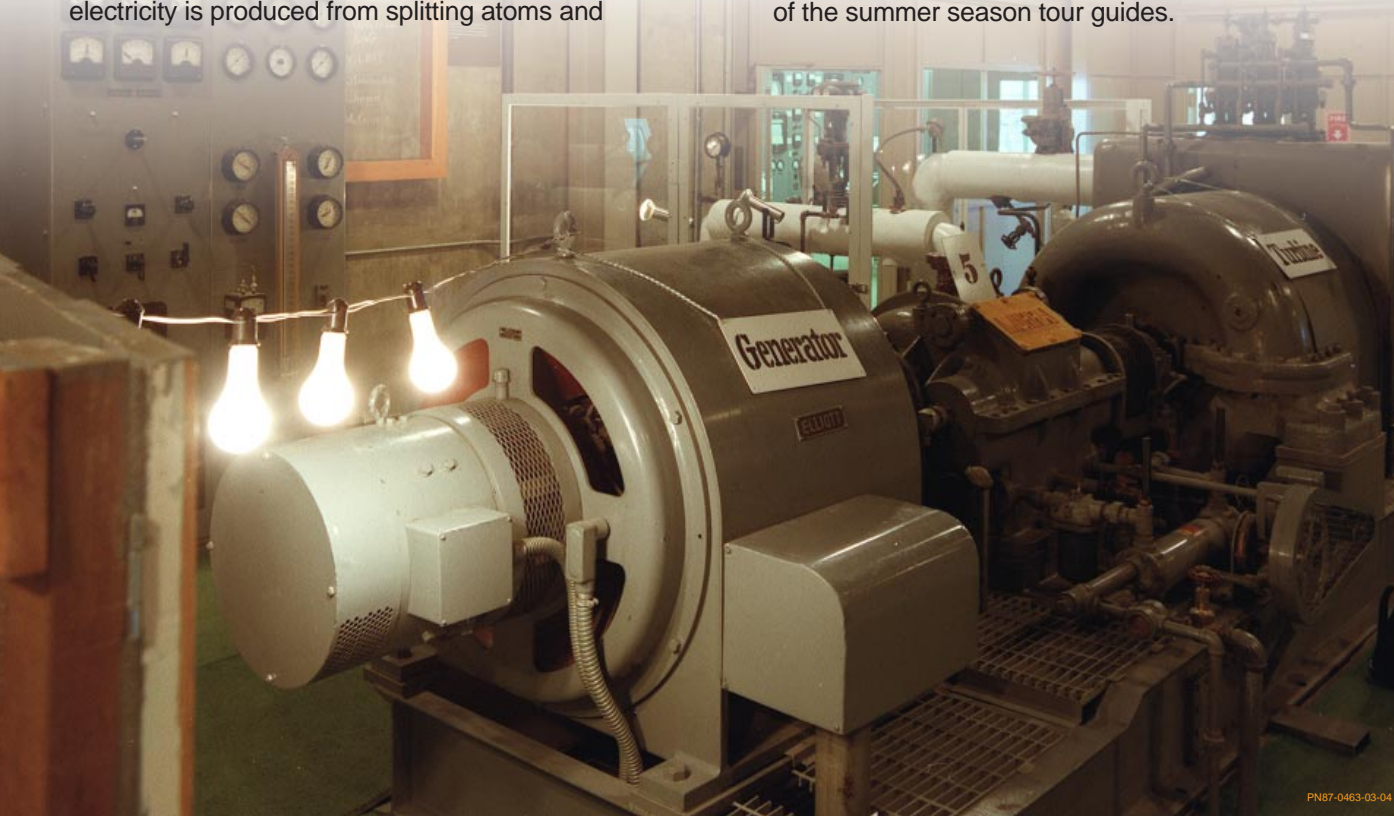
see numerous explanatory displays and exhibits. You can walk through the plant using the printed tour instructions, or take a guided tour with one of the summer season tour guides.

After Labor Day weekend, you can schedule group tours for weekdays only by calling the INEEL Tours Group at (208) 526-0050, E-mail vdm@inel.gov.

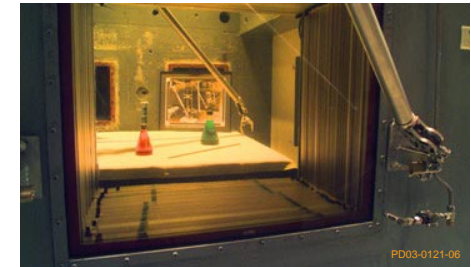


Groups, such as this one visiting the EBR-I control room, can arrange tours by calling (208) 526-0050.

PN97-0633-01-07A



PN87-0463-03-04



PD03-0121-06

Remote manipulators offer visitors a hands-on experience.



PN99-0446-01-08A

The EBR-I site is also home to these nuclear aircraft engine prototypes.