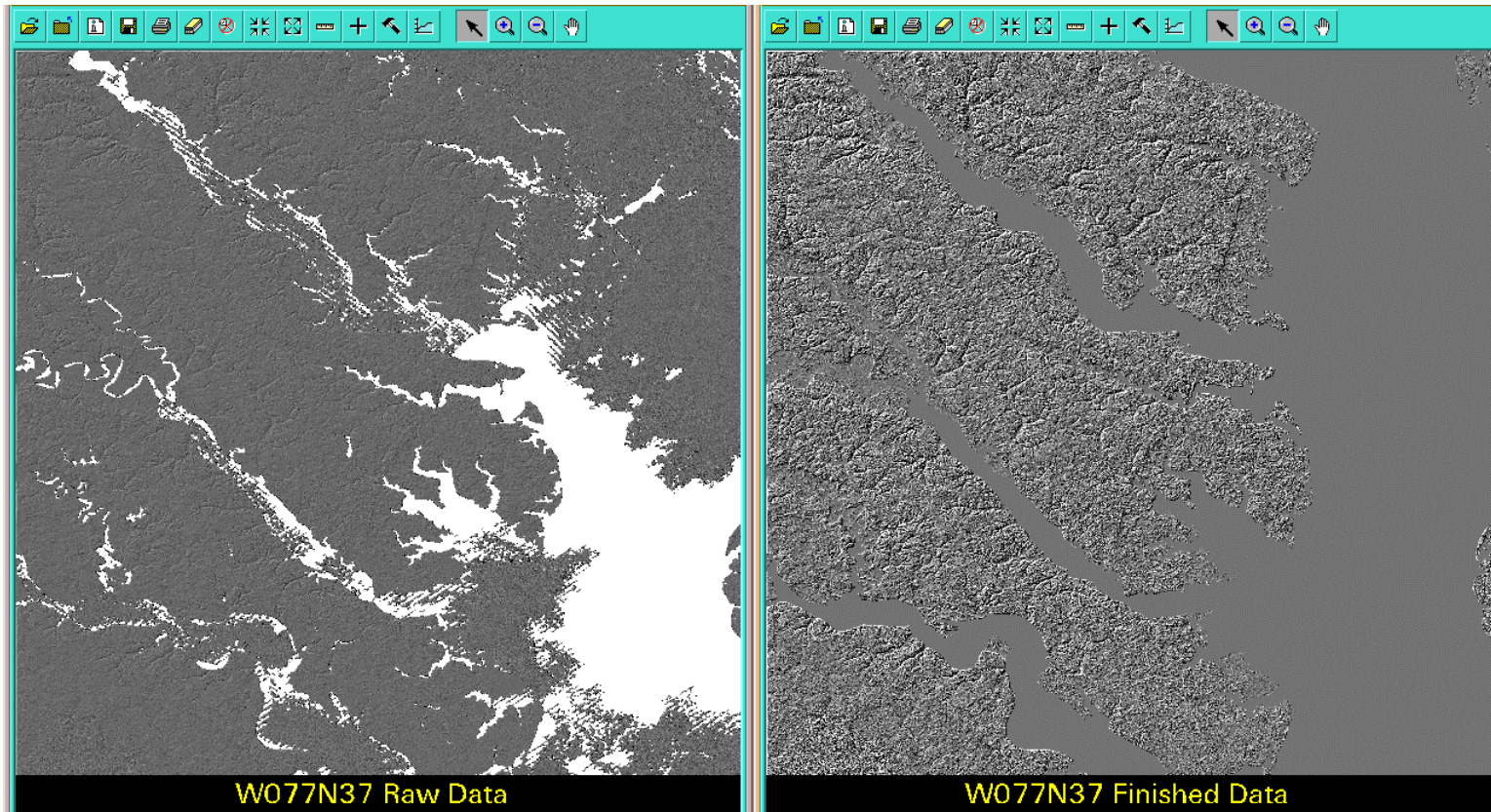
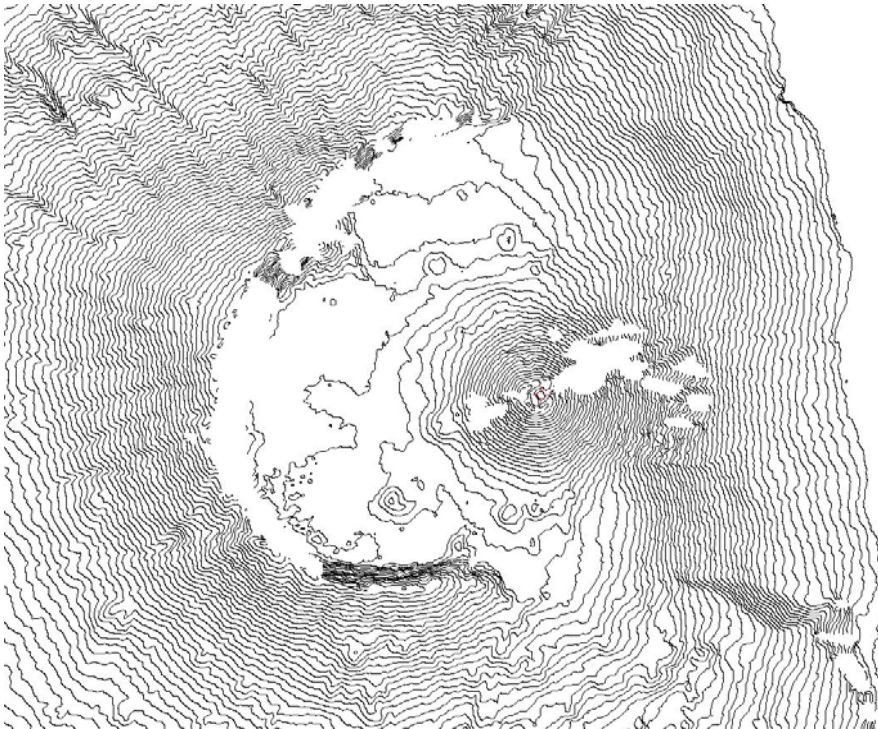


“UNFINISHED” vs. “FINISHED” SRTM DTED CHESAPEAKE BAY AREA, VIRGINIA



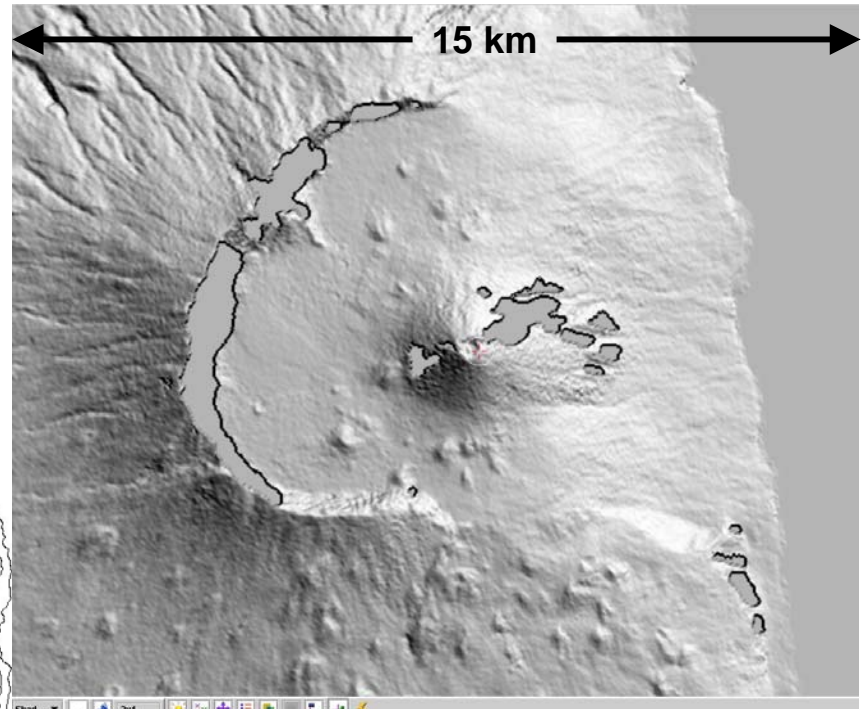
Terrain shaded relief images of “unfinished” SRTM elevation data (left) and “finished” SRTM elevation data (right) for a $1^{\circ} \times 1^{\circ}$ cell with Southwest corner coordinates W077N37. The white areas in the left image are missing data. The smooth gray areas in the right image are water. To be represented in the finished product, rivers must be greater than 183 meters wide and lakes must be greater than 600 meters in length. Ocean elevations are set to 0 meters. Spikes and wells greater than 100 meters have been removed in the finished data. Probably due to the latter, the shaded relief representation of the finished DTED[®] is scaled over a smaller range of elevation values than the unfinished data and thus appears to have better resolution in the finished image.

SRTM ELEVATION CONTOURS FOR VOLCANO IN CELLS W025N14 & W025N15 CAPE VERDE ISLAND AREA



Contour Plot

- Voids not filled
- 40 m contour interval



Terrain Shaded Relief

- Min. Elevation 31 m
- Max. Elevation 2,769 m