

BATES[®]
UNIFORM FOOTWEAR

WOLVERINE
Warrior
LEATHER



Upper:
Wolverine[®] Warrior Leather
with 1000 Denier Cordura[®]

- Minimal break-in
- Durable
- Breathable
- Quick drying

Midsole: Polyether

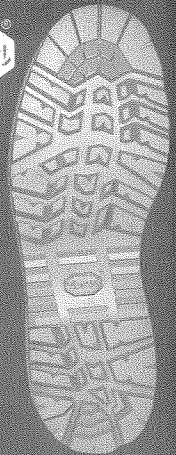
- Lightweight
- Shock absorbing

Outsole: Vibram[®] Sierra

- Cleated rubber bottom for traction
- Oil & Slip resistant
- Abrasion resistant
- Heat resistant up to 800°
- Lightweight

Steel Toe: Rated ANSI Z41 PT99 I/75 C/75

MEN'S SIZES M 7-12 EW 7-12



USMC Certified
#07-2003
40501 Steel-Toe
Jungle Desert Boot

PHOTOS: KIRHNE - USMC, GARCIA - USMC, DICKSON - USMC, THOMPSON - USMC