

**Department of Health and Human Services
National Institutes of Health
National Center for Research Resources
Division of Research Infrastructure (DRI)**

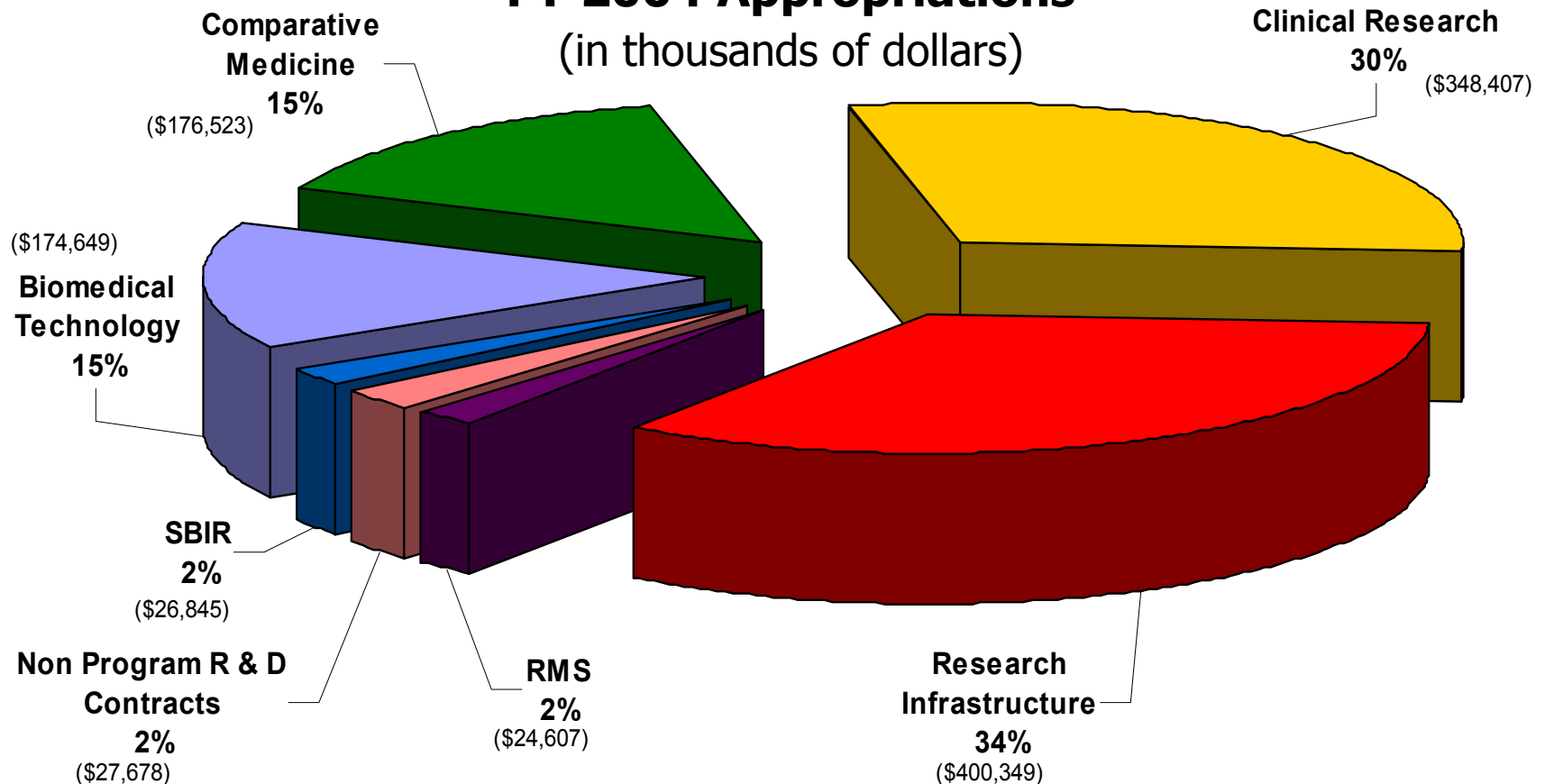
July 13, 2004 RFIP Presentation

**Sidney A. McNairy, Jr., Ph.D., D.Sc.
Director, DRI**

National Center for Research Resources

FY 2004 Appropriations

(in thousands of dollars)



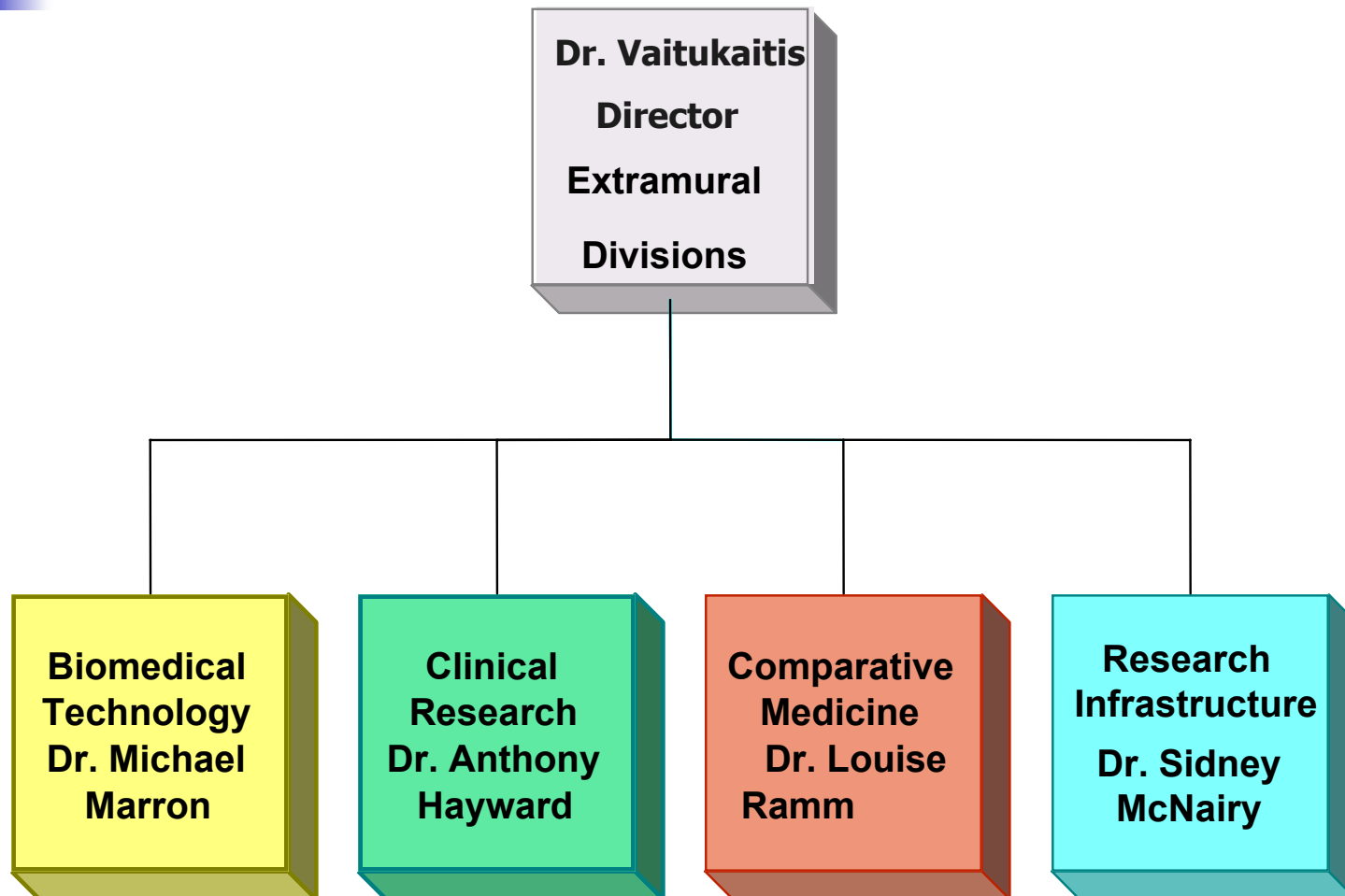
NCRR Total: \$1,179,058,000



National Center for Research Resources

Mission:

“...to strengthen and enhance the research environments of entities engaged in health-related research by developing and supporting essential research resources.” {PHS Act, Title III, Part E, Section 479}





Division of Research Infrastructure

**GOAL: TO DEVELOP THE NATION'S
CAPACITY FOR BIOMEDICAL
RESEARCH BY PROVIDING SUPPORT
FOR THE DEVELOPMENT OF
RESEARCH INFRASTRUCTURE**



Division of Research Infrastructure Activities

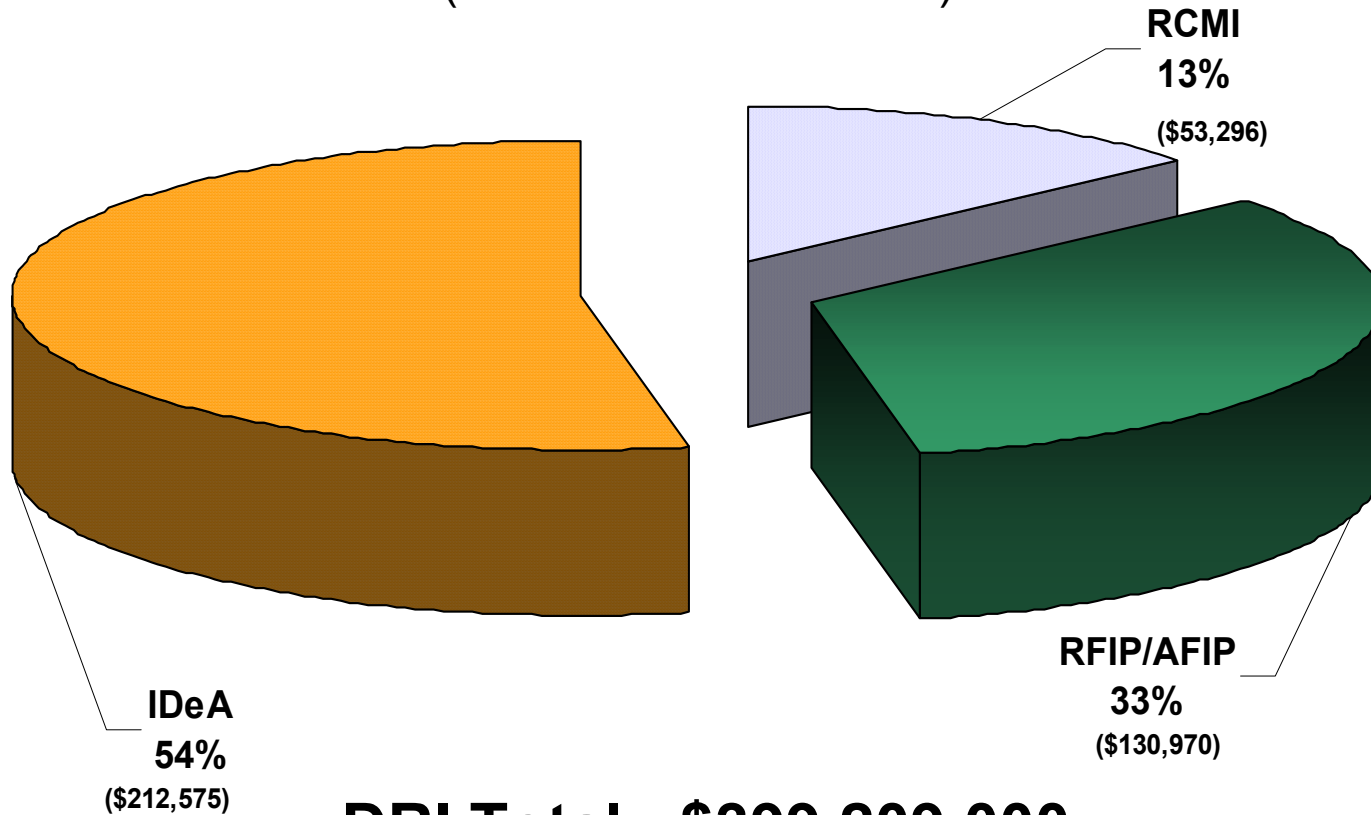
- ***Institutional Development Award (IDeA)
Program***
- ***Research Centers in Minority Institutions
(RCMI) Program***
- ***Facilities Improvement Programs***



Division of Research Infrastructure

FY 2004 Appropriations

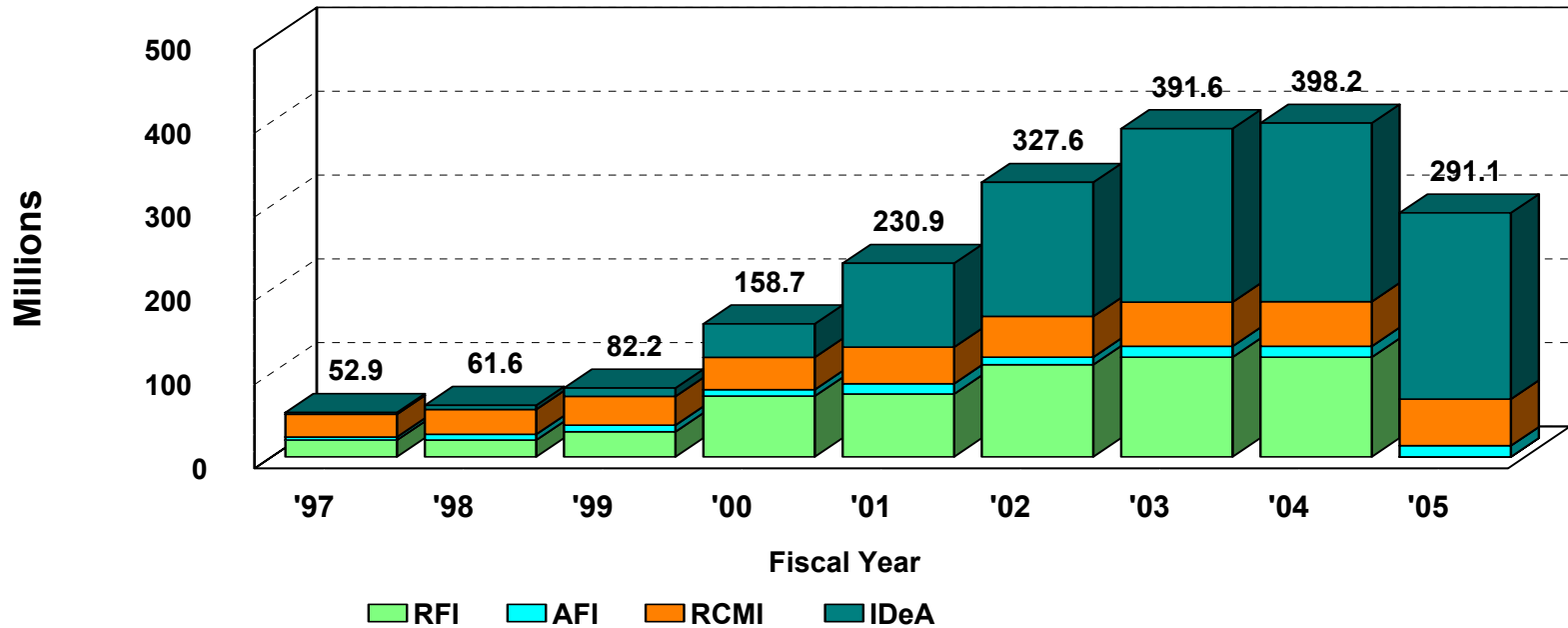
(in thousands of dollars)



DRI Total: \$399,209,000

Division of Research Infrastructure

Budget History



The '05 figure is the President's budget.



Institutional Development Award Program (IDeA)

IDeA Program established in 1993

- ✓ **Authorized in NIH Revitalization Act of 1993**
- ✓ **Congressional intent to enhance geographical distribution of research funds and increase research capacity**
- ✓ **Comparable to NSF Experimental Program to Stimulate Competitiveness in Research (EPSCoR), established in 1980**
- ✓ **EPSCoR-like programs across 8 Federal Agencies (NIH, NSF, USDA, NASA, DOE, DOC, DOD, EPA)**



Institutional Development Award Program

Division of Research Infrastructure

Perceived needs to increase research capacity:

- ✓ **Core Laboratories**
- ✓ **Senior and Junior Faculty development**
- ✓ **Infrastructure (equipment)**
- ✓ **Facilities alteration and renovation/development**
- ✓ **Post-doctoral, student and staff development**
- ✓ **Faculty recruitment**
- ✓ **Bioinformatics training for students and faculty**
- ✓ **“State of the Art” Instrumentation**
- ✓ **Release time for teaching and clinical faculty**
- ✓ **Undergraduate, graduate, post-doctoral recruitment**
- ✓ **Training opportunities in grant management**



CURRENT IDeA PROGRAMATIC MECHANISMS

Division of Research Infrastructure

- Centers of Biomedical Research Excellence (**COBRE**), began FY 2000, currently **62 centers**
- Biomedical Research Infrastructure Networks (**BRIN**), began FY 2001 / recompleted FY 2004 as IDeA Networks of Biomedical Research Excellence (**INBRE**), currently **24 networks**
- BRIN Western Region Infonet (**IDeANET**), FY 2003
- **Co-funding** (Shannon-like awards), FY 1998-2000, FY 2004



Division of Research Infrastructure COBRE

- To build a **multidisciplinary center** at doctoral institutions or research institutes.

Center Characteristics:

- To develop a **thematic scientific focus**.
- **Led by an established investigator**, funded by NIH, NSF or other comparable Federal or private sector source.
- To include 3 to 5 **research projects** each supervised by a **junior investigator**.
- To include a clear plan for **mentoring**, graduation and replacement of junior investigators.
- Must describe long-term plans for **development of the center, collaborations and physical infrastructure**.



IDeA NETWORKS OF BIOMEDICAL RESEARCH EXCELLENCE (INBRE), (BRIN Phase II) Division of Research Infrastructure

- To develop a **statewide multi-disciplinary research network** of doctoral degree granting and undergraduate institutions.
- To build and increase the research capacity by **supporting faculty, fellows and students** at participating institutions.
- To provide undergraduate faculty and students research support, serve as **“pipeline”** to health research careers.
- To provide **outreach** to students at undergraduate institutions, community colleges and tribal colleges.
- To enhance statewide **science and technology knowledge base**.



Division of Research Infrastructure IDeANET

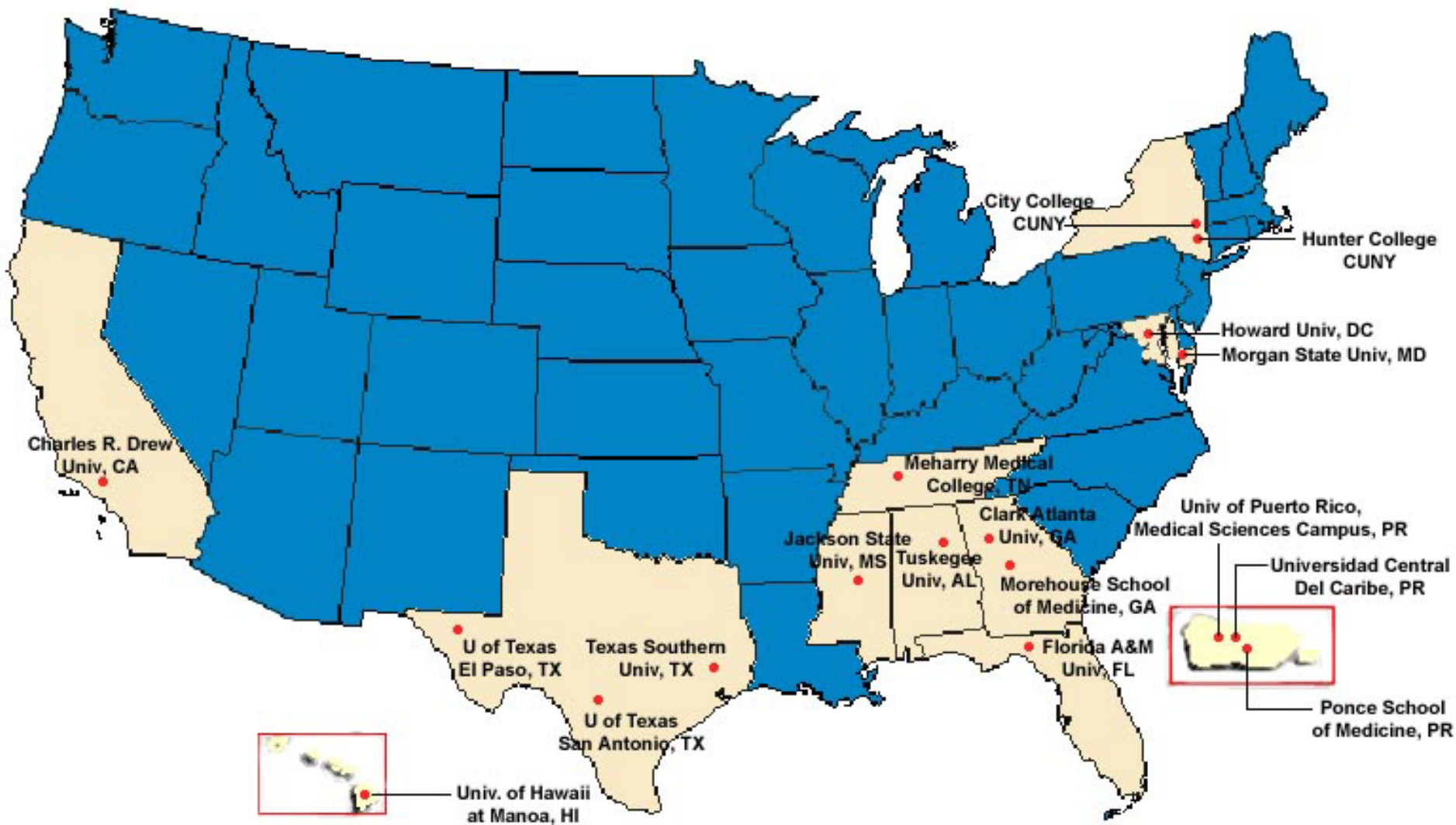
- IDeANET test-bed is a consortium of six IDeA states in the Northwest including Montana, Idaho, Nevada, Alaska, Hawaii and Wyoming (Lariat)
- **Communications**
 - E-mail and basic computer services
 - Library access
 - Website design and utilization
 - Video teleconferencing
- Genomics and Proteomics **data management**
- Imaging
- **Specialized equipment access** (virtual laboratories) and **collaborations** between laboratories and investigators
- Data Mining



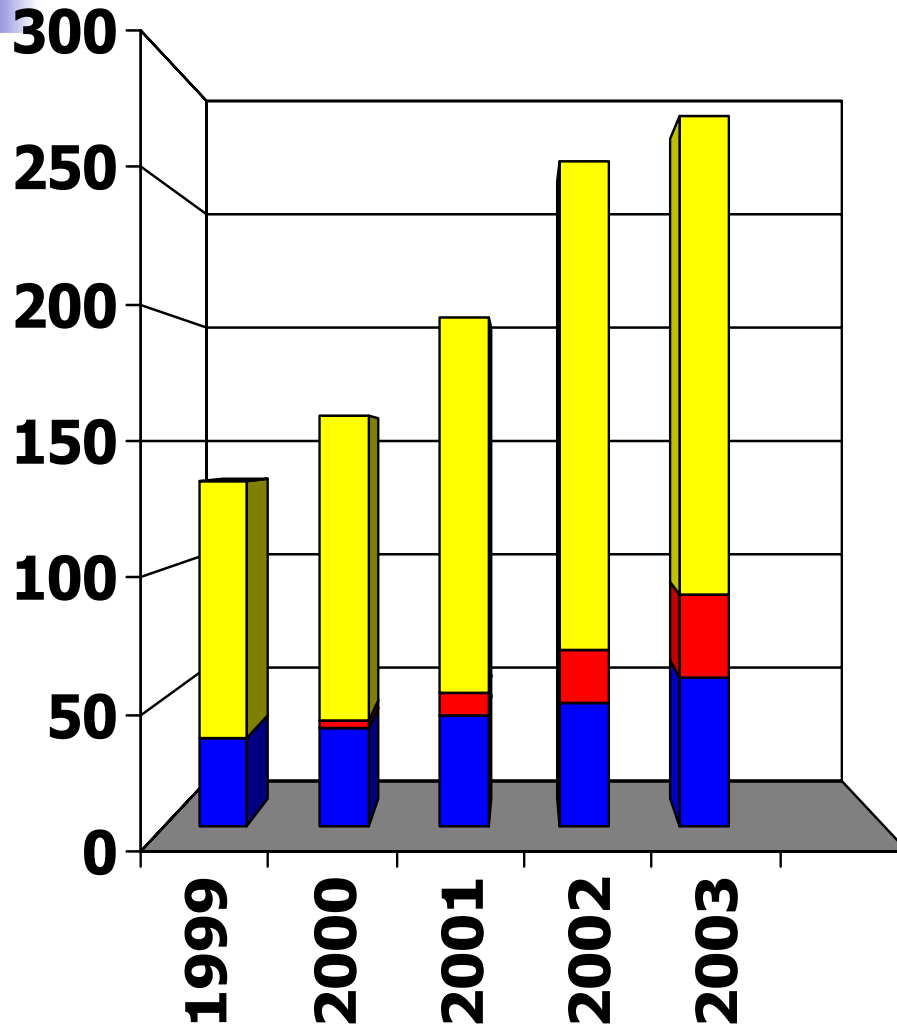
Division of Research Infrastructure IDeANET

- Computing at high speed, high capacity
- Archiving of databases
- Provide funding specifically to enhance IT infrastructure
- Highlight support for:
 - staff in bioinformatics and data management cores
 - computer hardware and software
 - Internet2 **broad-bandwidth access** for biomedical applications
- Fund a **national IDeA network** such as Lariat

NIH-NCRR: RCMI SITES



Division of Research Infrastructure Research Centers in Minority Institutions Budget History for all programs (in millions)



- Other NIH**
- Other DRI CO6, COBRE, BRIN**
- RCMI, RCRII, CCRE, CCHD, CRECD, SNRP, SPIRP, CRSP**



Division of Research Infrastructure NIH Roadmap

- **RCMI, RCRII, CCRE** (Infrastructure, including but not limited to access to enabling technologies, databases, and other scientific resources; translational research core services; faculty development and recruitment of experienced investigators)
- **Comprehensive Centers on Health Disparities** (research teams of the future; re-engineering clinical research)
- **Clinical Research Education and Career Development and Loan Re-payment Programs** (enhancing clinical research workforce training)
- **RCMI Translational Research Network (RCMI Net)** (integration of clinical research networks; interdisciplinary research; clinical research informatics)



Division of Research Infrastructure

Comprehensive Centers on Health Disparities (CCHD)

Goals

- **Develop sustainable, replicable, and culturally appropriate prevention and/or intervention research programs designed to decrease the incidence and prevalence of disease**
- **Enhance opportunities for multi-disciplinary research collaborations between basic and clinical scientists; other centers conducting health disparity research; community organizations**
- **Increase the role of research in maintaining a vigorous and stimulating academic environment that will inspire students and fellows to pursue careers that focus on health disparities**
- **Three CCHD that focus on HIV/AIDS and Chronic Kidney Disease will be supported in FY 04 -Puerto Rico Consortium (UPRMS, Ponce and UCC), Meharry, and Charles R.Drew**



Division of Research Infrastructure Clinical Research Education and Career Development Awards (CRECD)

- **CRECD awards are intended to support the development and implementation of curriculum-dependent programs to train doctoral and post-doctoral candidates in clinical research leading to a Master of Science in Clinical Research or Master of Public Health in a clinically relevant area**
- **The award provides partial support for the above activities and for external consultants, advisors, and research mentors; trainees may receive partial salaries/stipends and supplies for up to two years**
- **Five CRECD Awards will be supported in FY 04 at Meharry; Drew; Morehouse; UPR, Medical Sciences Campus; and the University of Hawaii**
- **ICs co-funding this award with NCRR are NIAMS, NIDDK, NCMHD, NEI, NIA, NIDA, and NHLBI**



Division of Research Infrastructure RCMI Translational Research Network (RCMI Net)

- **A consortia of RCMI and other institutions located within a variety of communities that suffer from disproportionate adverse health outcomes**
- **Goal is to assess, understand, and integrate socio-cultural/ biological/ environmental/ community factors into the strategy of translating research advances into improved patient outcomes**
- **Enhance the capability for collaboration within the NCRR and the broader biomedical community**
- **Promote interdisciplinary interactions and team science**



Division of Research Infrastructure

Co-funding of NIH Activities

- **Stroke Prevention and Intervention Research Program (NINDS, NHLBI)** is designed to evaluate and develop appropriate prevention and intervention protocols for reduction of stroke in African Americans
 - In FY 2004 NCRR will co-funded one award
- **Cooperative Reproductive Science Research Programs at Minority Institutions (NICHD)**
 - In FY 2004 NCRR will co-funded two awards
- **Specialized Neuroscience Research Programs (SNRP) at Minority Institutions (NINDS)**
 - In FY 2004 NCRR will co-funded six to eight awards



Division of Research Infrastructure NIH Collaborative Partners

- NIEHS
- NIDCR
- NIDDK
- NCI
- NEI
- NIAMS
- NIA
- NICHD
- NHGRI
- NCMHD
- NIAID
- NHLBI
- NIDA
- NIMH
- NINDS
- NIAAA
- OAR
- ORWH



9th RCMI International Symposium on Health Disparities

- **9th RCMI International Symposium on Health Disparities**

December 8-14, 2004

Baltimore, MD

highlighting the environmental, economic, cultural, bio-behavioral and genetic bases of health disparities in

- **Cancer**
 - **Cardiovascular disease**
 - **Diabetes**
 - **HIV/AIDS**
 - **Asthma and autoimmunity**
 - **Perinatology and reproductive biology**
 - **Neurological disease**
-
- **<https://www.mpi-evv.com/RCMI/Frame.htm>**

Division of Research Infrastructure

Facilities Improvement Programs

- ✓ **The Research Facility Improvement (RFI) Program**
- ✓ **The Animal Facility Improvement (AFI) Program**