

# The National Fire Plan

[fireplan.gov](http://fireplan.gov)



## National Fire Plan Operations and Reporting System

### Exercise 4 – New Treatment Unit

#### Part 1 – Create New Treatment Unit

**Step 1:** Click on the “New Treatment Unit” link in the “Administrative Tasks” portlet.

Administrative Tasks

Search within Gifford Pinchot NF hazardous fuels data

Search

[Reports] [New Project] [New Activity] [New Treatment] [New Treatment Unit]

**Step 2:** Enter your treatment unit name (e.g. “Mill Creek” + Student Number + “Unit 1”).

**Step 3:** Enter the size of the treatment unit, in acres.

**Step 4:** Select the state that the treatment unit is within.

New Treatment Unit

\* Treatment unit name

Area (acres)

State

Fire regime  I  II  III  IV  V

Cancel Next >

**Step 5:** Select the predominant fire regime.

**Step 6:** Click the “Next” button.

**Step 7:** Click on the “UseMap” link.

Select Treatment Unit Location

\* Treatment unit name  Buffalo Creek Unit 1

Area (acres)  500

Fire regime  I  II  III  IV  V

\* Latitude  Use Map

\* Longitude

State  Washington

County

Congressional district

Representative

< Back Save

**Step 8:** Zoom in to an area of interest in Washington by drawing a bounding rectangle around the area.

To draw a bounding rectangle, left-click on the upper left hand corner of the area of interest, while holding down your mouse button, drag your cursor to the lower right hand corner of the area of interest and release the mouse button.

**Step 9:** Click on the “Get Location” button.

**Step 10:** Click on the “OK” button after reading the pop-up instructions.

**Step 11:** Click on the treatment unit location.

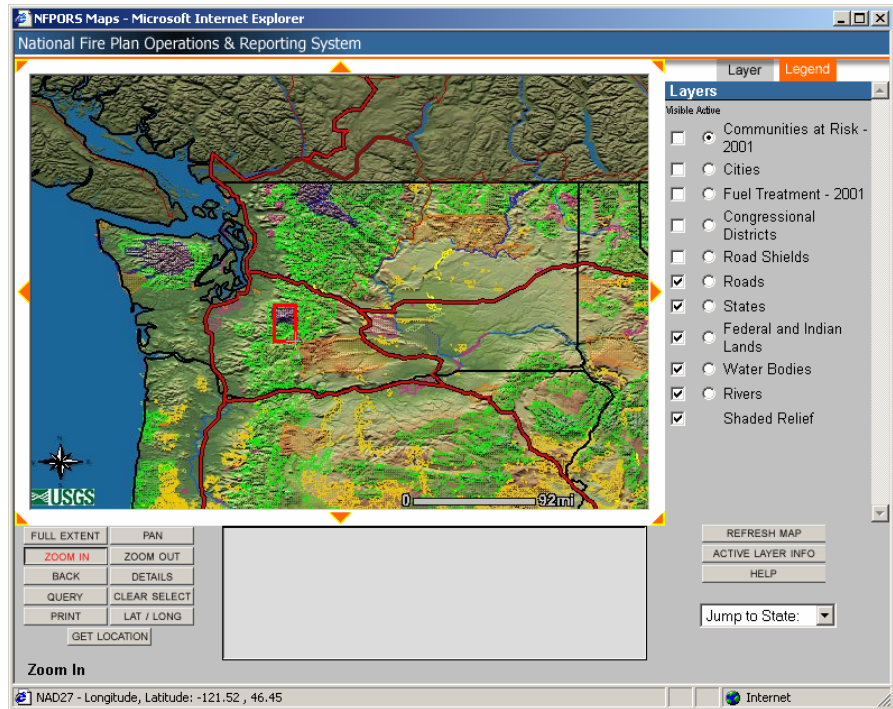
**Step 11:** Let the screen refresh and then click “OK” to the confirm location pop-up message.

Russell Berry  
Project Manager  
Office of Wildland Coordination  
Interior Department  
[russell\\_berry@ios.doi.gov](mailto:russell_berry@ios.doi.gov)

Peter Bedker  
Assistant Project Manager  
National Information Center for State and Private Forestry  
USDA Forest Service  
[pbedker@fs.fed.us](mailto:pbedker@fs.fed.us)

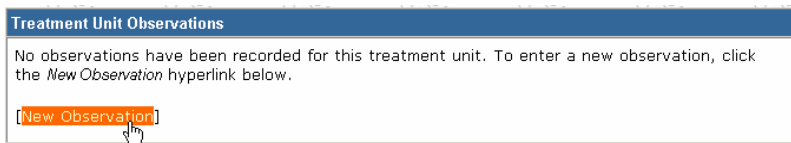
This will return you to the NFPORS Select Treatment Unit Location page and enter the location information for the location you identified.

**Step 12:** Click the “Save” button.



*Part 2 – Create New Treatment Unit Observation*

**Step 1:** Click on the “New Observation” link with in the “Treatment Unit Observations” portlet.



**Step 2:** Enter the percentage of the treatment unit area in each condition class (e.g. 25% Condition Class 1, 50% Condition Class 2 and 25% Condition Class 3). The percentages must total 100%.

**Step 3:** Click the “Save” button.