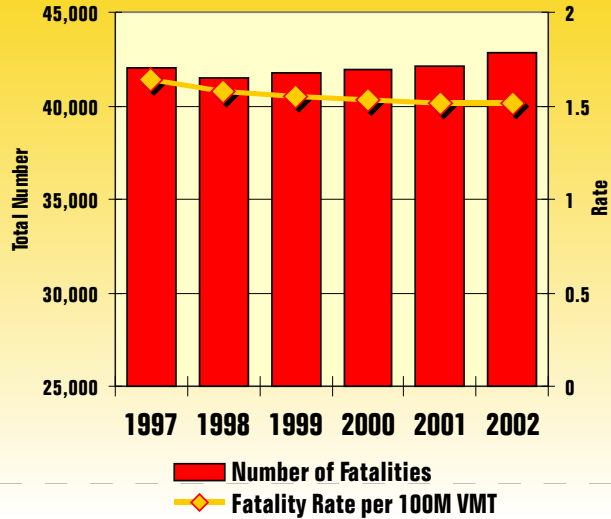
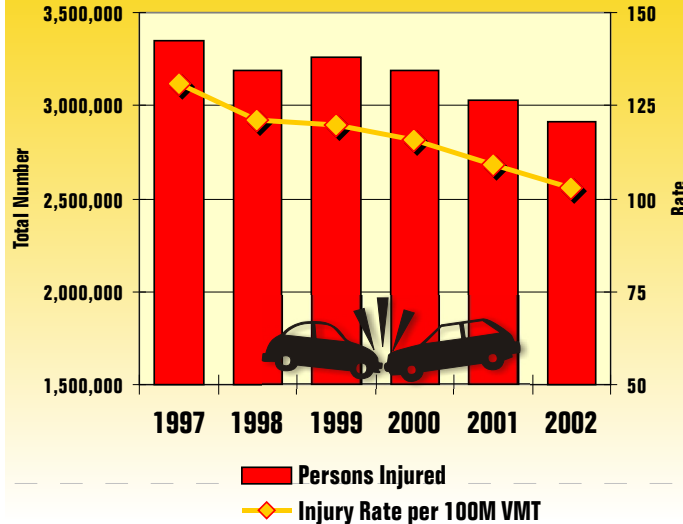


National Overview of Recent Highway Safety Data

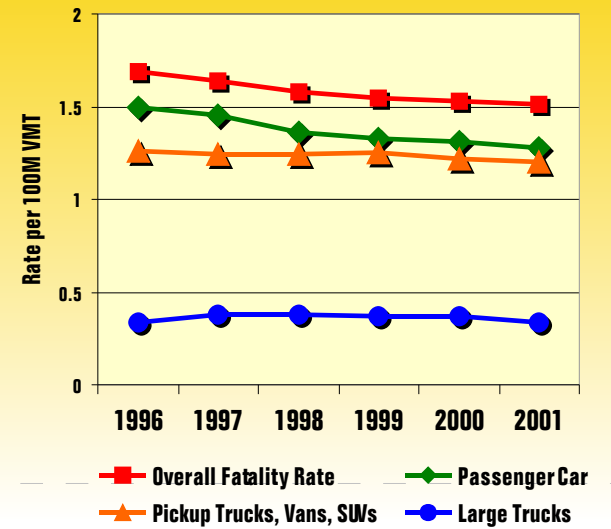
Motor Vehicle Traffic-Related Fatalities



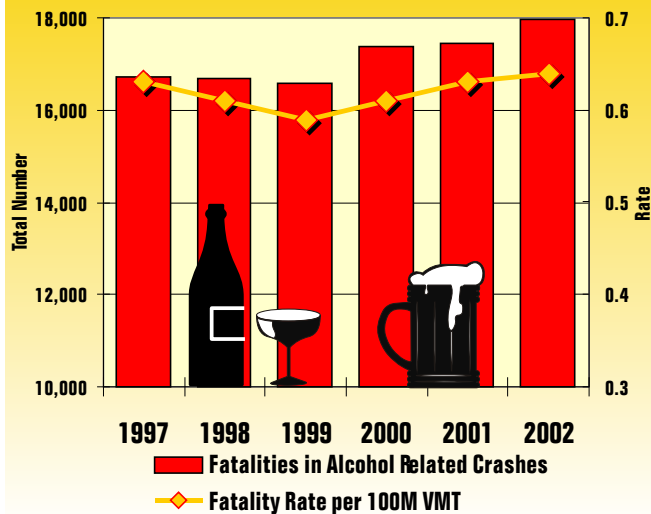
Motor Vehicle Traffic-Related Injuries



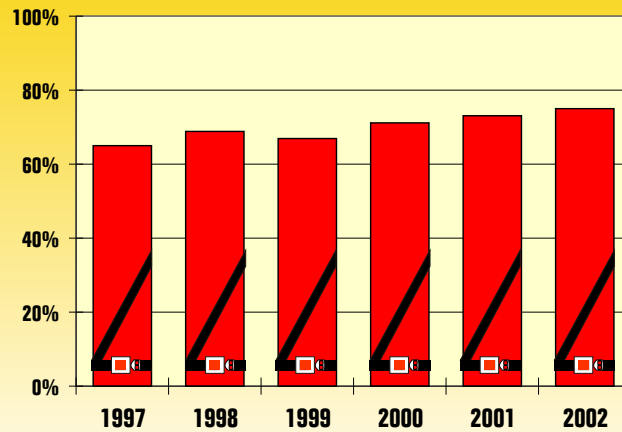
Overall Fatality Rate and Occupant Fatality Rates by Vehicle Type



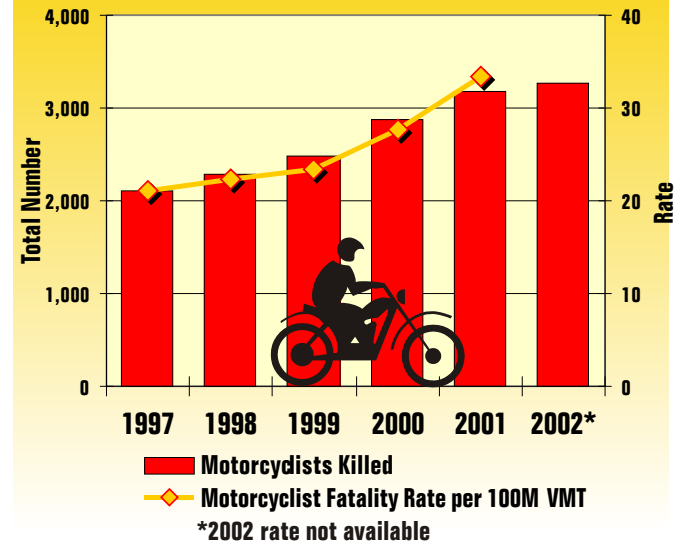
Alcohol-Related Fatalities



Percentage of Passenger Vehicle Occupants Observed Wearing Safety Belts

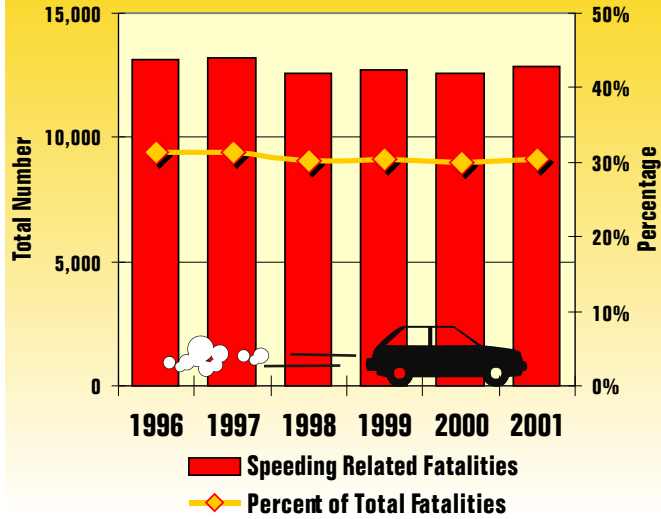


Motorcyclist Fatalities

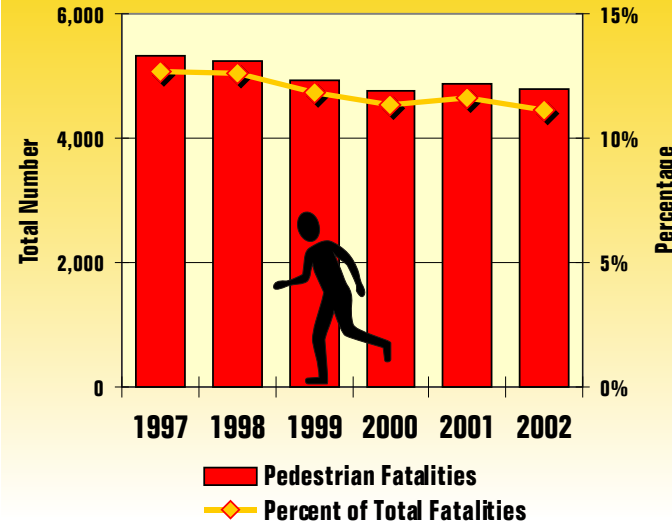


National Overview of Recent Highway Safety Data, page two

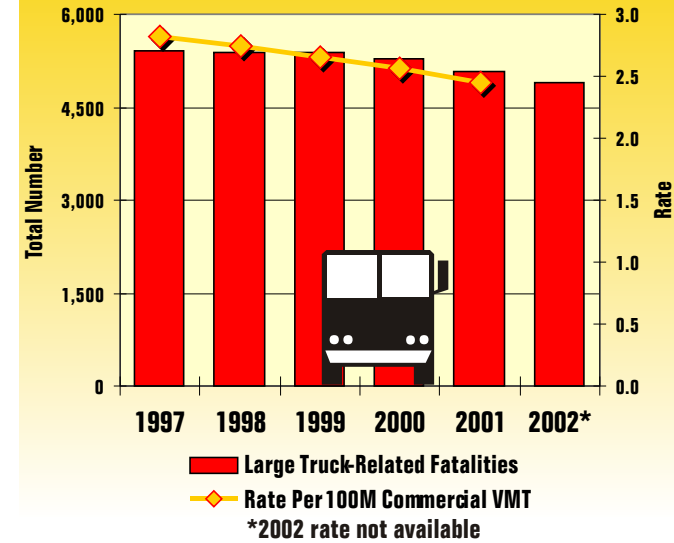
Speeding-Related Fatalities



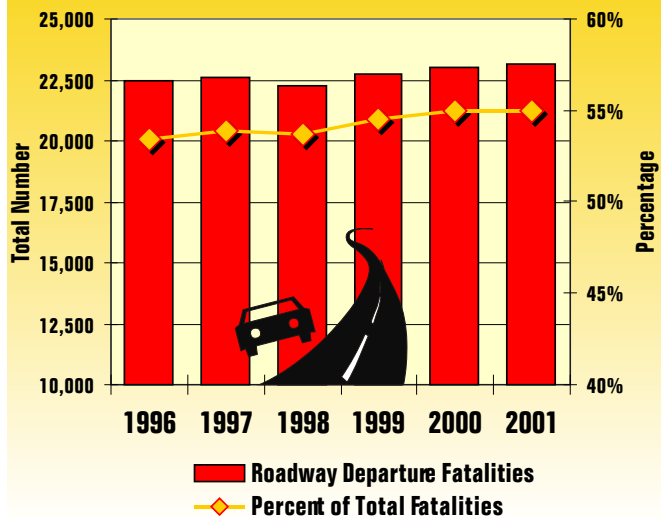
Pedestrian Fatalities



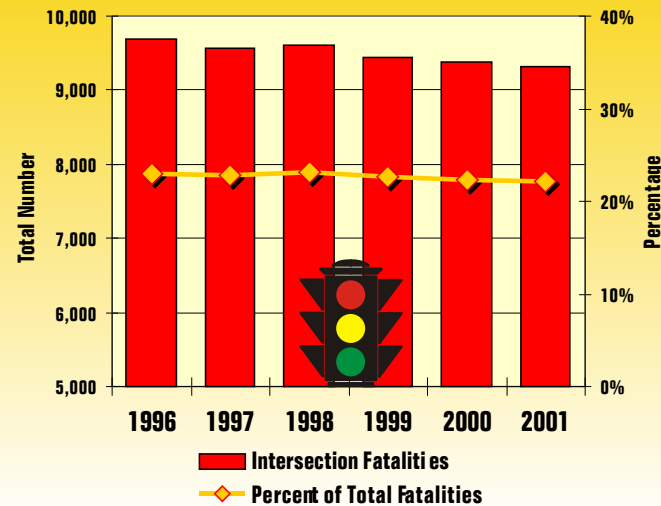
Large Truck-Related Fatalities



Roadway Departure Fatalities



Intersection-Related Fatalities



Data Sources

- Fatality data: Fatality Analysis Reporting System (FARS), 1996-2000 Final File, 2001 Annual Report File, 2002 Early Assessment File.
- Injury data: National Automotive Sampling System (NASS)/General Estimates System (GES) 1996-2001, 2002 Early Assessment File.
- Safety Belt Use data: National Occupant Protection Use Survey (NOPUS).
- All data available from the National Center for Statistics & Analysis (NCSA), National Highway Traffic Safety Administration (NHTSA).
- Vehicle Miles of Travel and Licensed Drivers data: Highway Performance Monitoring System (HPMS), Federal Highway Administration (FHWA).

Notes

- Rates are number of persons killed or injured per 100 million Vehicle Miles Traveled (VMT).
- Percentages have total number of traffic fatalities as the denominator.
- Alcohol-related crashes refer to drivers with Blood Alcohol Concentrations of .01 grams per deciliter or higher. NHTSA estimates alcohol involvement when alcohol test results are unknown.
- "Speeding" is defined as driver charged with speedway-related offense or police officer indication of driving too fast for conditions, racing, or exceeding posted speed limit.
- Large truck-related fatalities refers to persons killed in crashes involving a large truck.
- "Roadway departure" includes crashes involving single-vehicle run-off-road, head-on collisions, and opposite direction sideswipes.
- "Intersection Fatalities" include fatalities in or related to intersections.