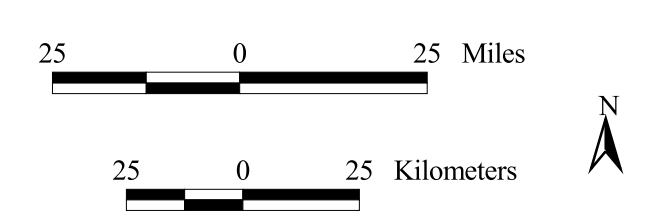


MMS U.S. Department of the Interior
Minerals Management Service
Gulf of Mexico OCS Region

Military Warning Areas August 2003

- Military Warning Area boundary
- Planning area boundary
- Protraction boundary



Scale: 1:1624000
Projection: Albers Equal-Area Conic
Spheroid: Clarke 1866
Central Meridian: -89.17433
Reference Latitude: 27.03441
Standard Parallel 1: 24.89332
Standard Parallel 2: 29.17550

Water Depth (meters)