

# Medical Reserve Corps

---

State  
Of  
California





**California,  
Working with Federal Partners to  
Capture a Vast Medical Personnel  
Resource**

# California is a BIG State

- 34 Million People
- Over 50 Languages
- 156,000 Square Miles
- Almost 1000 Miles in Length
  - 58 Counties
- From Extremely Populated to Actual Frontier





# California (America's Multi-Hazard Disaster Theme Park)



Earthquakes

Floods

Riots

Tsunamis

Fires

Mudslides

Volcanoes

Terrorism

- Cooperation & Coordination
  - State-Coordinated
    - SEMS
    - NIMS



# HHS OSG MRC Demo Grants

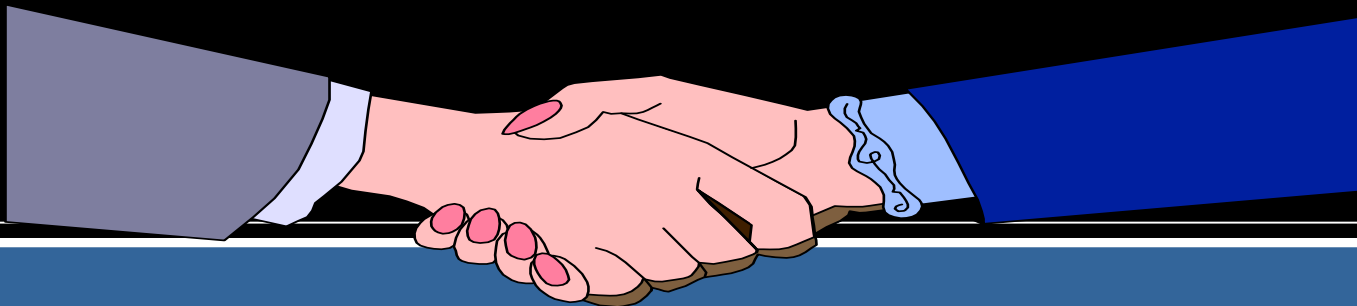
- ❄️ “A Ha”
- ❄️ Initiate SEMS Concept
- ❄️ HBPP CDC/HRSA Grant
- ❄️ Increase Surge Capacity
- ❄️ Create a State MRC Network
- ❄️ Encourage MRC Development
- ❄️ Capture “SUVs” prior to event



# Collaborating State Departments

---

- **GO SERV** CA Governor's Office on Service and Volunteerism [www.goserv.ca.gov](http://www.goserv.ca.gov)
- **EMSA / DMS** CA Emergency Medical Services Authority Disaster Medical Services Division [www.emsa.ca.gov](http://www.emsa.ca.gov)





# California MRCs

- 2002 - Three Demonstration Grant Recipients
- 2003 - Nine additional Grant Recipients
- 2004 - 20 MRCs registered with the State & actively participating in state coordination efforts

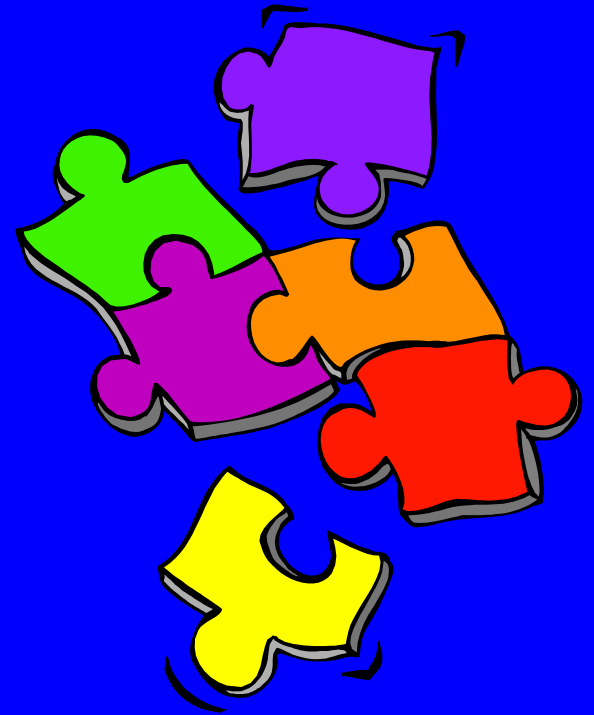


# California MRCs

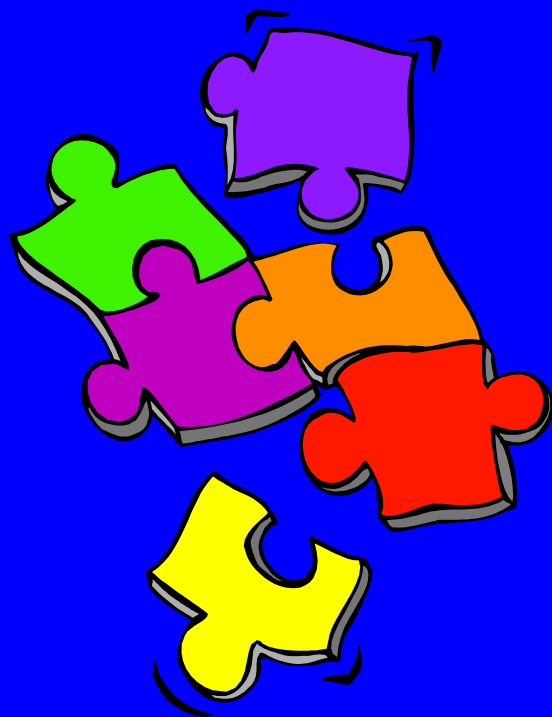
- ▶ Unit Membership Up to 600+
- ▶ LA & San Francisco Bay Areas
  - ▶ Southern Desert Counties
    - ▶ One in High Sierra
- ▶ One in Central Valley (Fresno)

# Different Ways CA MRCs Fit into Local Disaster Plans

- ❄ Augment First Responders
- ❄ Increase Surge Capacity
- ❄ Assist in Evacuation of Stabilized Casualties
- ❄ Provide Mental Health Intervention
- ❄ Address Special-Needs Population Issues



# Different Ways CA MRCs Fit into Local Disaster Plans (cont)



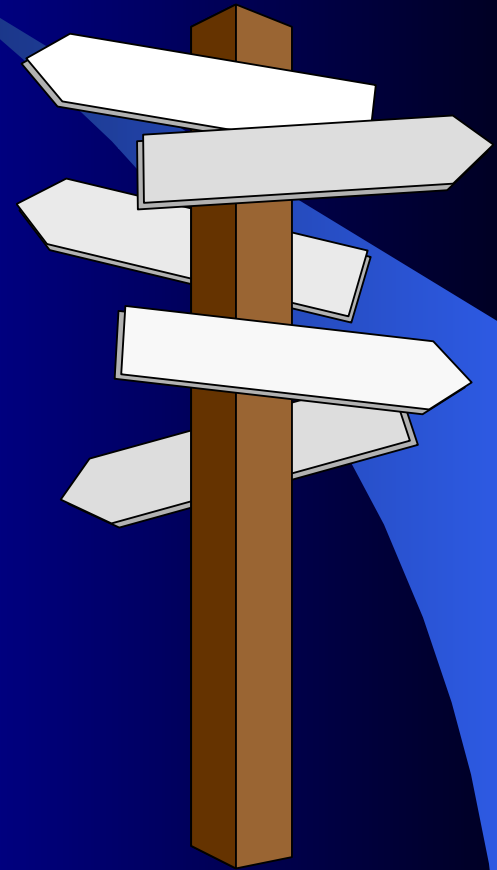
- ✓ Public Health Initiatives / Education
- ✓ Assist in Mass Prophylaxis Efforts
- ✓ Logistical Support to Healthcare Professionals
- ✓ Provide Welfare Status-Checks
- ✓ Manage SUVs

# Benefits of Statewide Coordination

- ▶ Work on Same Page
- ▶ Collaboration Between Units
  - ▶ Use of “Best Practices”
- ▶ Streamline MRC Establishment
  - ▶ Increase Number of Units
- ▶ Development of Professional Registry
  - ▶ Increase Surge Capacity
    - ▶ Harness SUVs

# Where We're Going

- Statewide Registry
- Statewide Credentialing
- Definitive State Malpractice Protection
- State Disaster Legislation
- Statewide Templates
- Non-English Language Resource Interpretation



# Medical Reserve Corps of California





# Thank You

---

Sherrill Reed, RN  
CA MRC State Coordinator  
CA Emergency Medical Services Authority  
1930 9<sup>th</sup> Street, Sacramento, CA 95814  
916-322-4336  
[sherrill.reed@emsa.ca.gov](mailto:sherrill.reed@emsa.ca.gov)