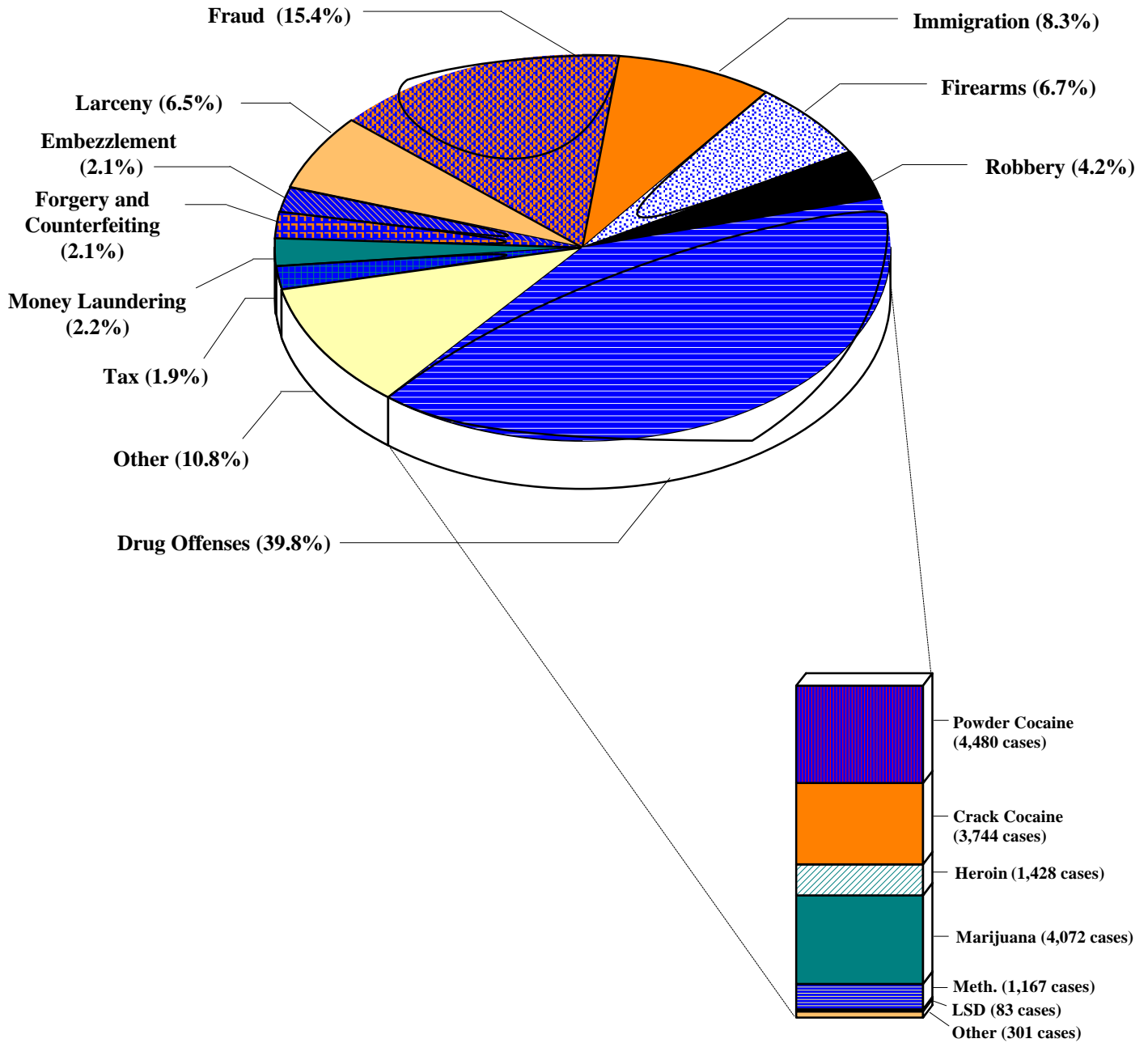


Figure B

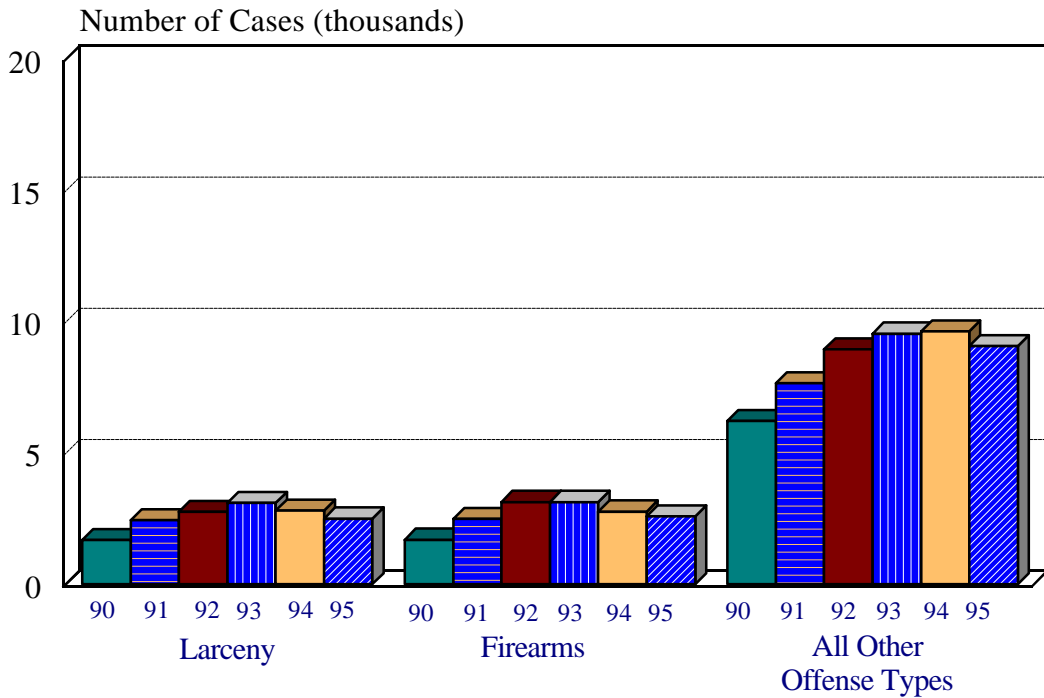
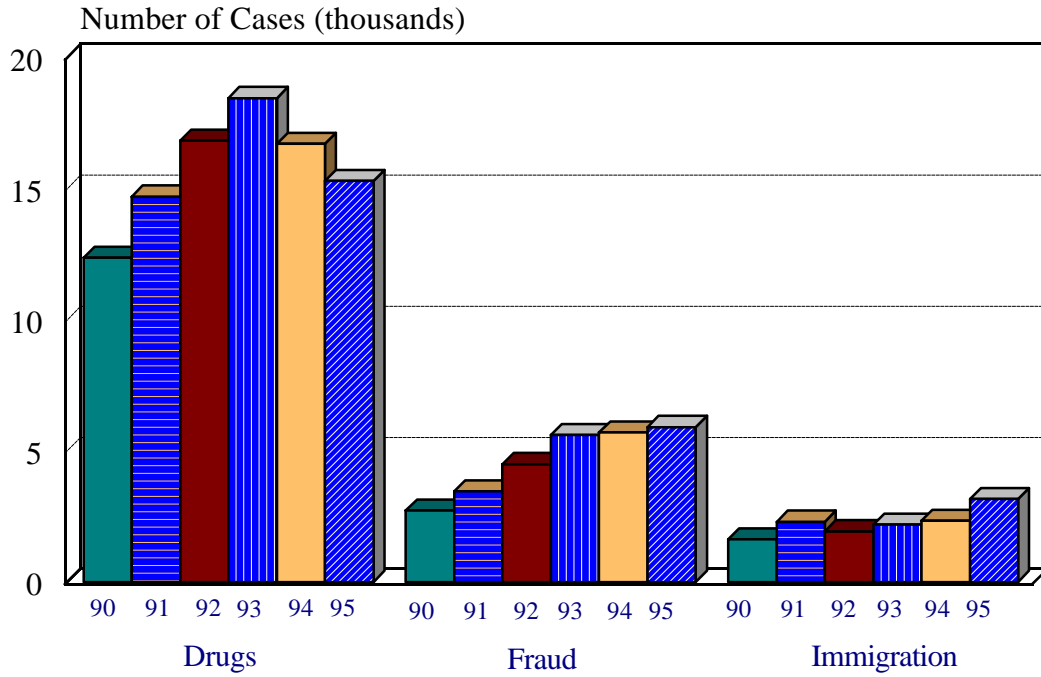
**DISTRIBUTION OF SENTENCED GUIDELINE
DEFENDANTS BY PRIMARY OFFENSE CATEGORY ¹**
(October 1, 1994, through September 30, 1995)



¹Of the 38,500 guideline cases, 123 were excluded due to missing primary offense category. The number of cases in each category is reflected in Table 10. Of the 15,288 drug cases (including trafficking, use of a communication facility, and simple possession), 13 were excluded from the bar chart due to missing drug type. Descriptions of variables used in this figure are provided in Appendix A.

SOURCE: U.S. Sentencing Commission, 1995 Data File, MONFY95.

Figure C
NUMBER OF GUIDELINE CASES BY SELECTED OFFENSE TYPES AND YEAR ¹
(October 1, 1989, through September 30, 1995)

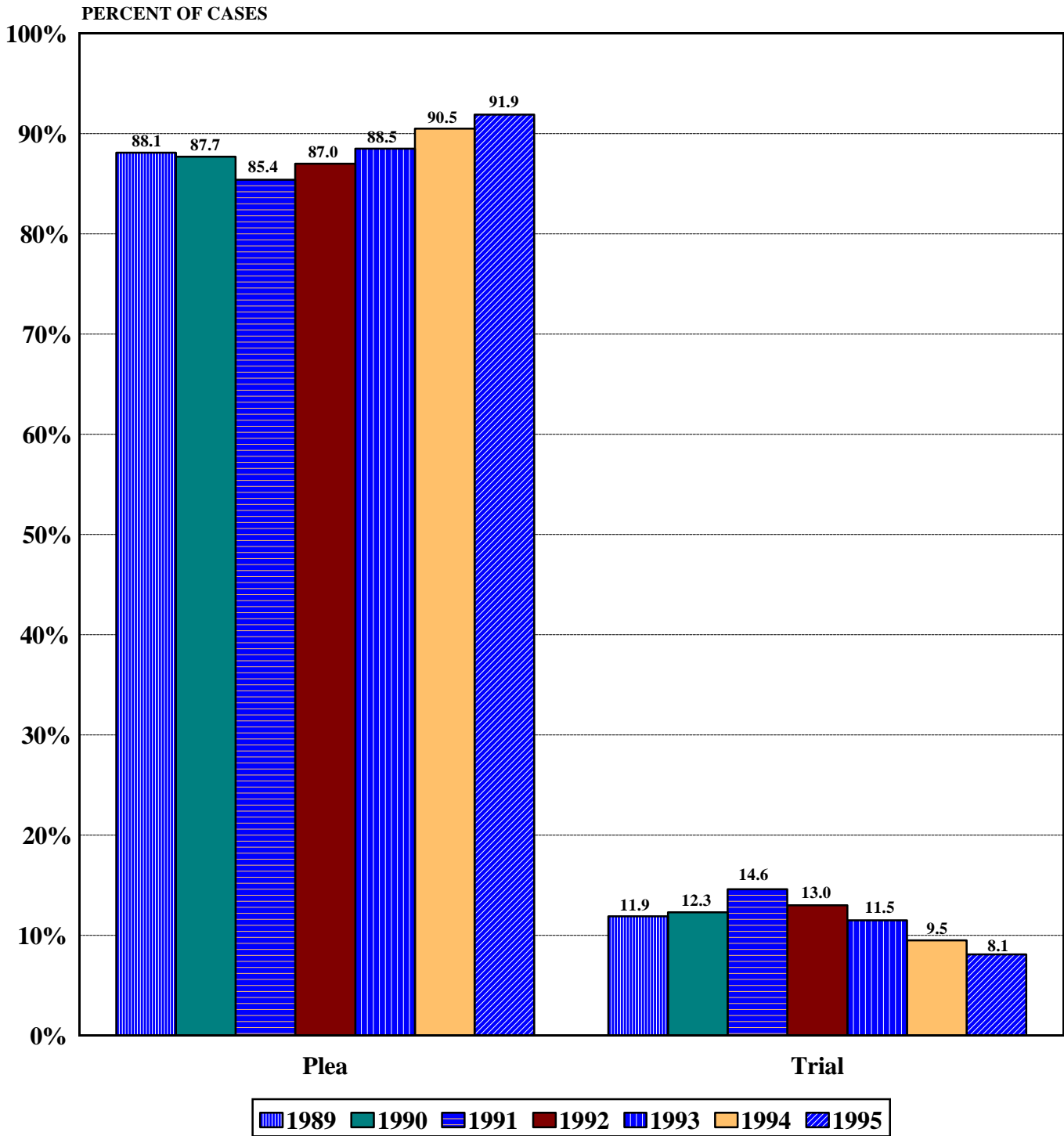


¹ Drug offenses in this bar chart include: trafficking, use of a communication facility, and simple possession. Descriptions of variables used in this figure are provided in Appendix A.

SOURCE: U.S. Sentencing Commission, Monitoring Datafiles.

Figure D

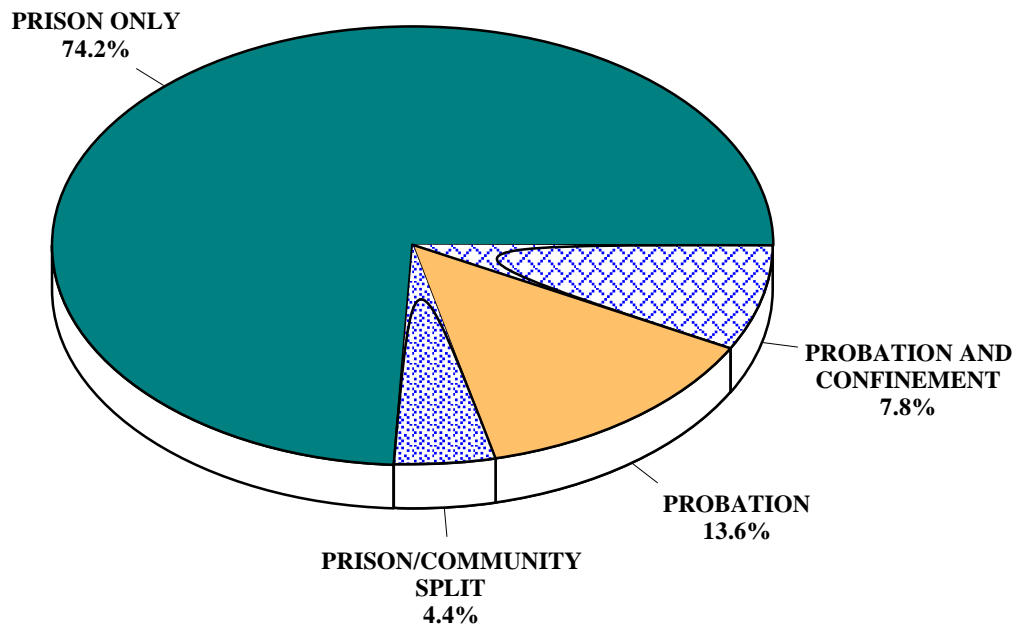
MODE OF CONVICTION BY SENTENCING YEAR¹
(January 19, 1989, through September 30, 1995)



¹ Information through August 1990 is imported from the AO's FPSSIS datafiles; subsequent information is derived from the Commission's monitoring datafiles. Additionally, 1989 information is for the calendar year (1/19/89 - 12/31/89); the Commission changed to a fiscal year format beginning in 1990. This change in reporting practice results in overlap of case reporting from October 1989 through December 1989. Descriptions of variables used in this figure are provided in Appendix A.

Source: U.S. Sentencing Commission, Monitoring Datafiles, MONFY89-MONFY95.

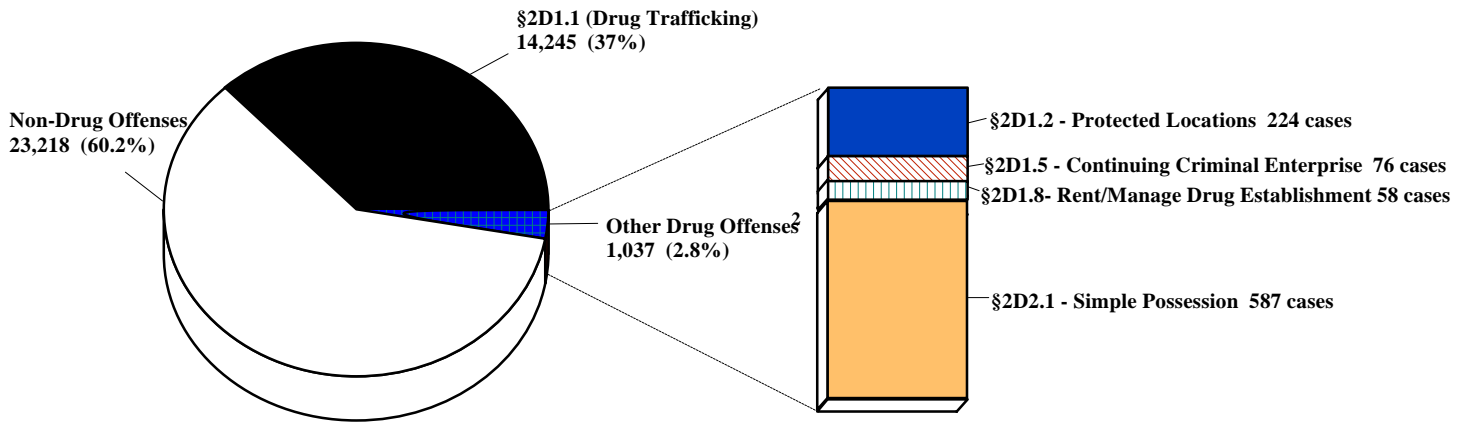
Figure E
TYPE OF GUIDELINE SENTENCE IMPOSED¹
(October 1, 1994, through September 30, 1995)



¹Of the 38,500 cases, 265 were excluded due to one or both of the following reasons: cases in which the defendant received no prison or probation (113); missing sentencing information (152). Prison/Community Split includes all cases in which defendants received prison and conditions of confinement as defined in USSG §5C1.1. The number of cases in each category is reflected in Table 18. Descriptions of variables used in this figure are provided in Appendix A.

SOURCE: U.S. Sentencing Commission, 1995 Datafile, MONFY95.

Figure J
DISTRIBUTION OF DRUG GUIDELINE OFFENSES ¹
(October 1, 1994, through September 30, 1995)

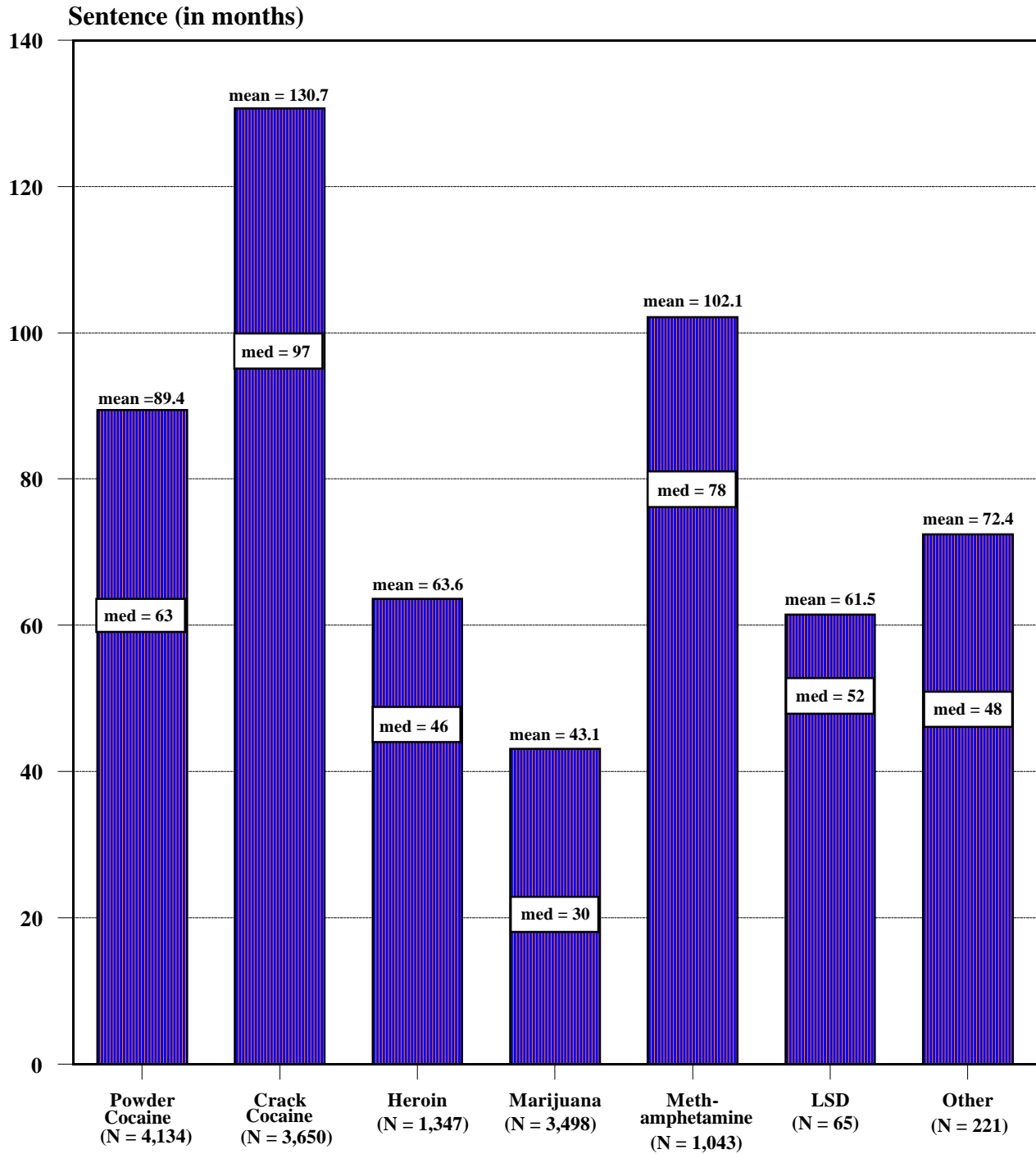


¹ Of the 38,500 cases, 15,282 were sentenced under USSG Chapter Two, Part D (drugs). Descriptions of variables used in this table are provided in Appendix A.

² Of the 15,282 cases sentenced under USSG Chapter Two, Part D (drugs), 1,037 were sentenced for drug offenses other than §2D1.1. Of these 1,037 cases, 945 were sentenced under the four drug guidelines depicted in the column chart.

SOURCE: U.S. Sentencing Commission, 1995 Datafile, MONFY95.

Figure K
AVERAGE LENGTH OF IMPRISONMENT BY DRUG TYPE¹
(October 1, 1994, through September 30, 1995)



¹Of the 38,500 cases, 15,282 were sentenced under USSG Chapter Two, Part D (drugs). Of these, 92 sentenced under Part D guidelines other than §§2D1.1, 2D1.2, 2D1.5, 2D1.8, or 2D2.1 are not depicted in this figure. Additionally, 1,141 cases with zero months prison ordered were excluded. Of the remaining 14,049 cases, nine were excluded due to missing drug type and 82 due to missing sentencing information.

SOURCE: U.S. Sentencing Commission, 1995 Datafile, MONFY95.

Figure M
RACE BY DRUG TYPE AND YEAR FOR DRUG¹
DEFENDANTS
 (October 1, 1991, through September 30, 1995)

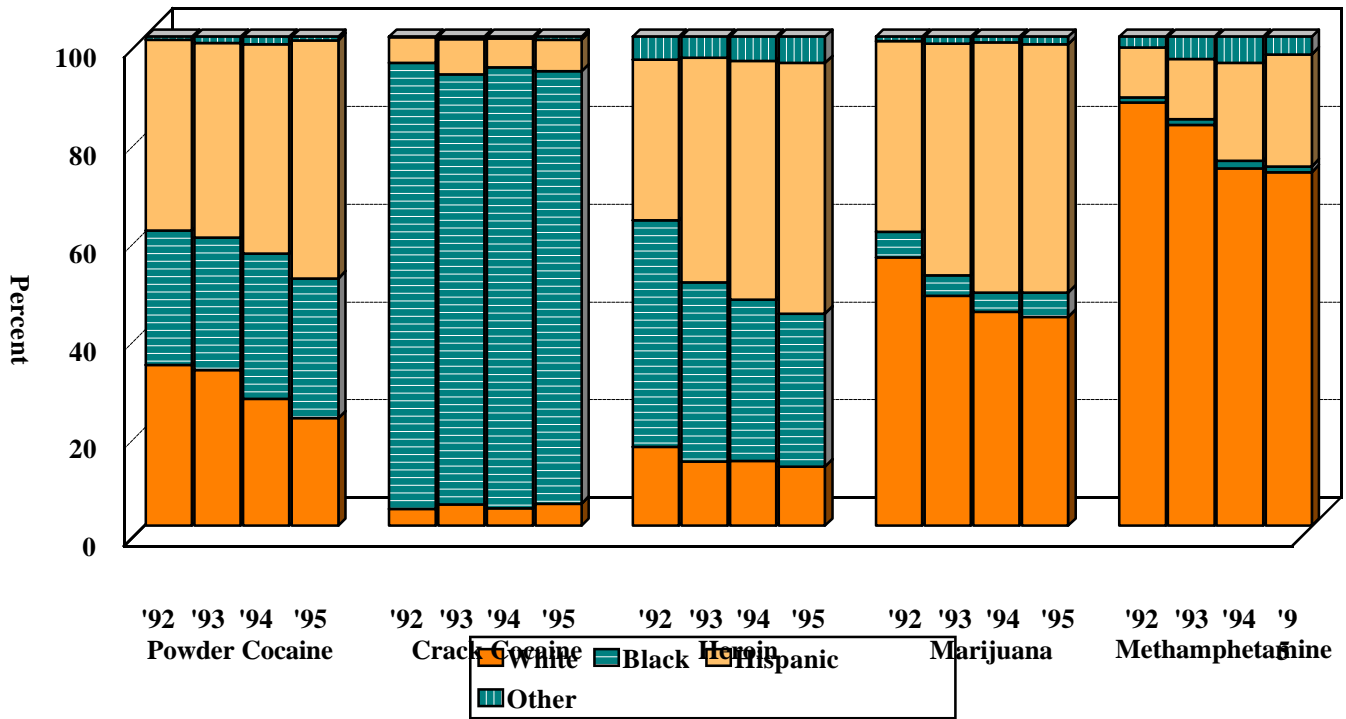
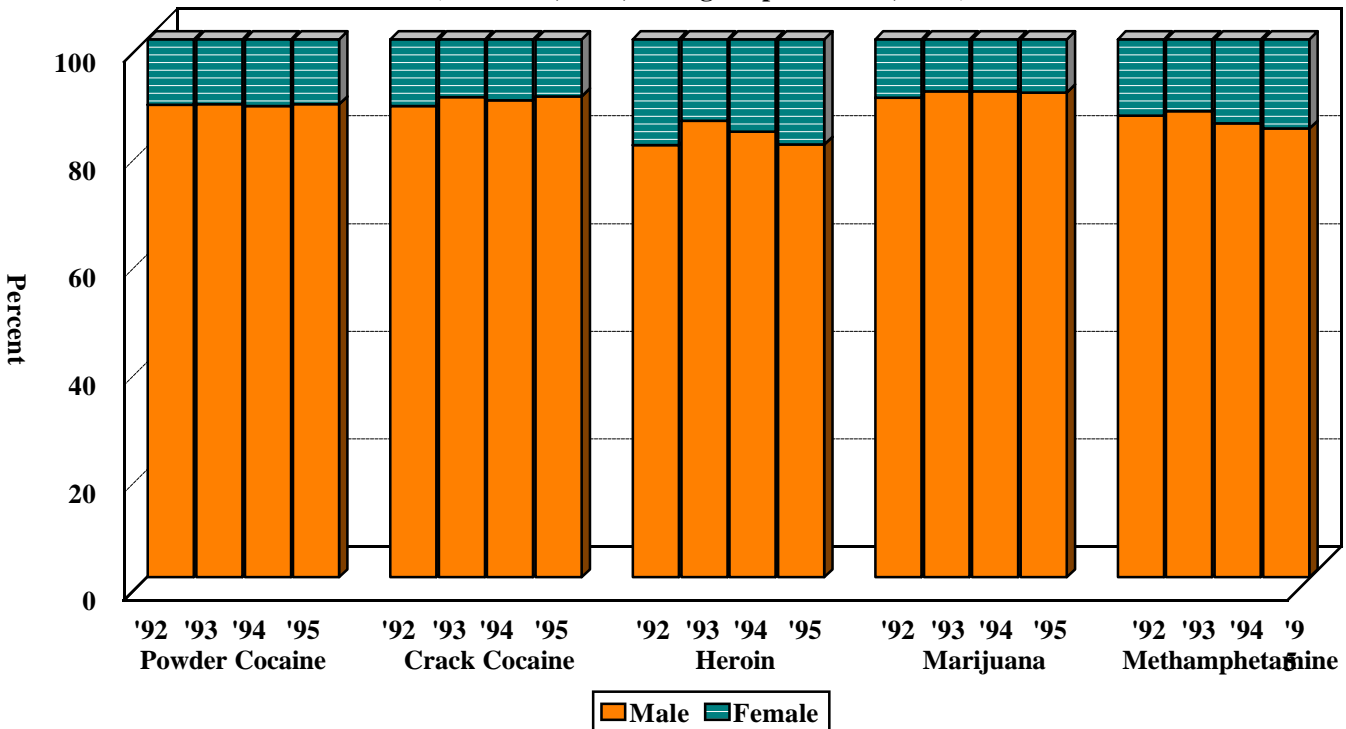


Figure N
GENDER BY DRUG TYPE AND YEAR FOR DRUG¹
DEFENDANTS
 (October 1, 1991, through September 30, 1995)



¹ Only cases sentenced under §§2D1.1 (Drug Trafficking), 2D1.2 (Protected Locations), 2D1.5 (Continuing Criminal Enterprise), 2D1.8 (Rent/Manage Drug Establishment), or 2D2.1 (Simple Possession) are depicted in this figure. Additional cases were excluded due to missing information on type of drug or demographic information.

Figure O
CITIZENSHIP STATUS BY DRUG TYPE AND YEAR FOR DRUG¹
DEFENDANTS
 (October 1, 1991, through September 30, 1995)

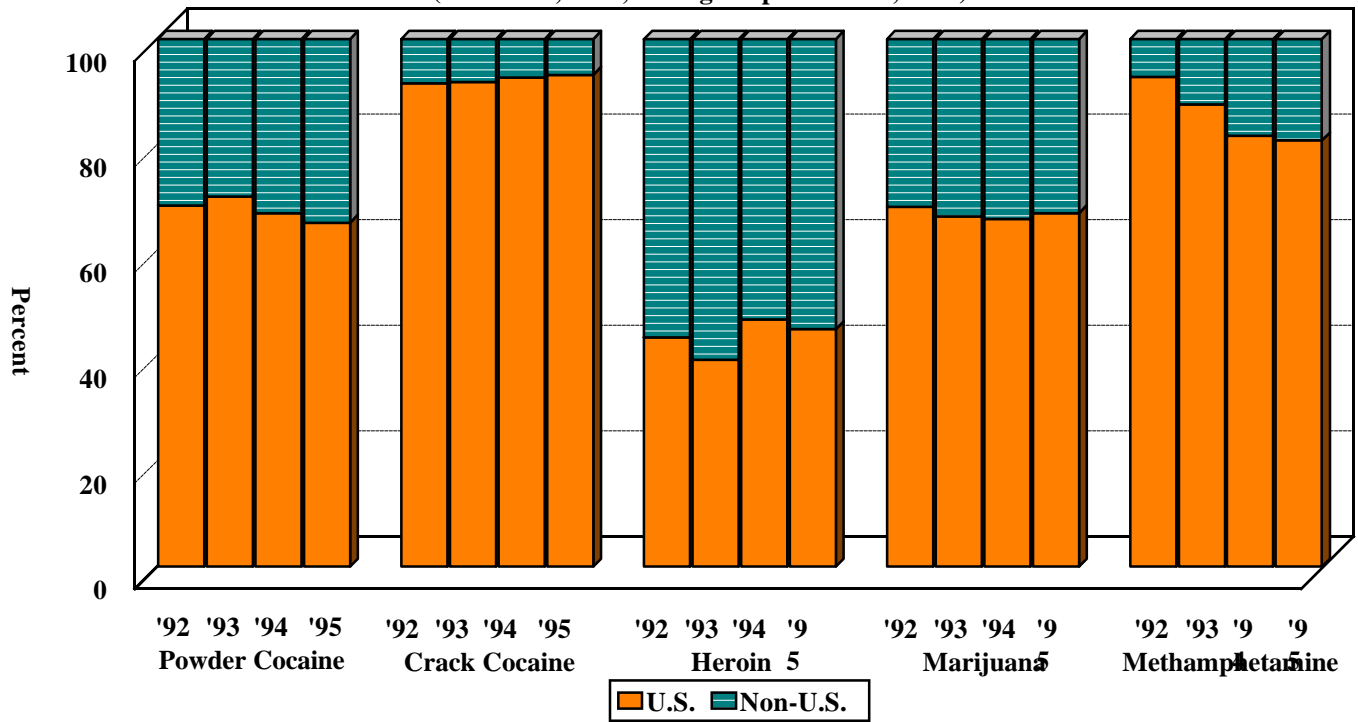
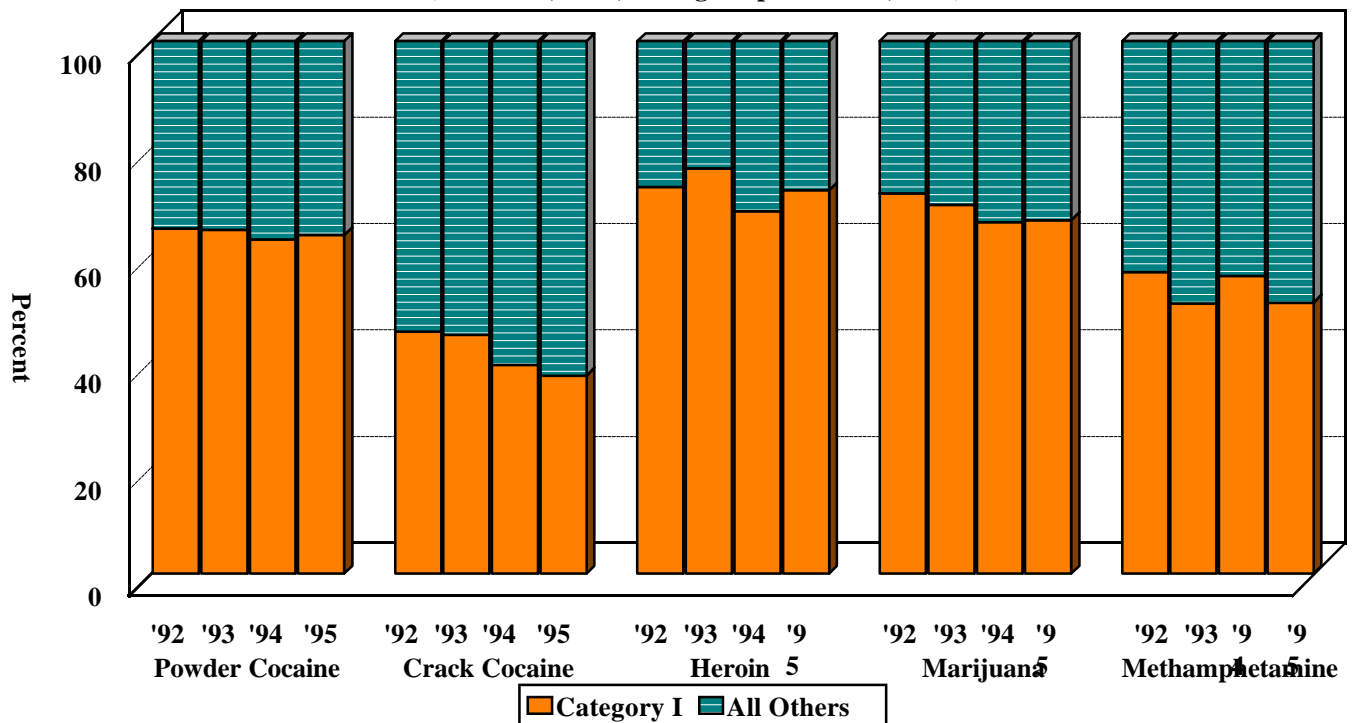


Figure P
CRIMINAL HISTORY STATUS BY DRUG TYPE AND YEAR FOR DRUG¹
DEFENDANTS
 (October 1, 1991, through September 30, 1995)



¹ Only cases sentenced under §§2D1.1 (Drug Trafficking), 2D1.2 (Protected Locations), 2D1.5 (Continuing Criminal Enterprise), 2D1.8 (Rent/Manage Drug Establishment), or 2D2.1 (Simple Possession) are depicted in this figure. Only cases with complete guideline application information were included in the second figure. Additional cases were excluded due to missing information on type of drug, citizenship status, or criminal history information.

Figure Q
MODE OF CONVICTION BY DRUG TYPE AND YEAR FOR DRUG¹
DEFENDANTS
 (October 1, 1991, through September 30, 1995)

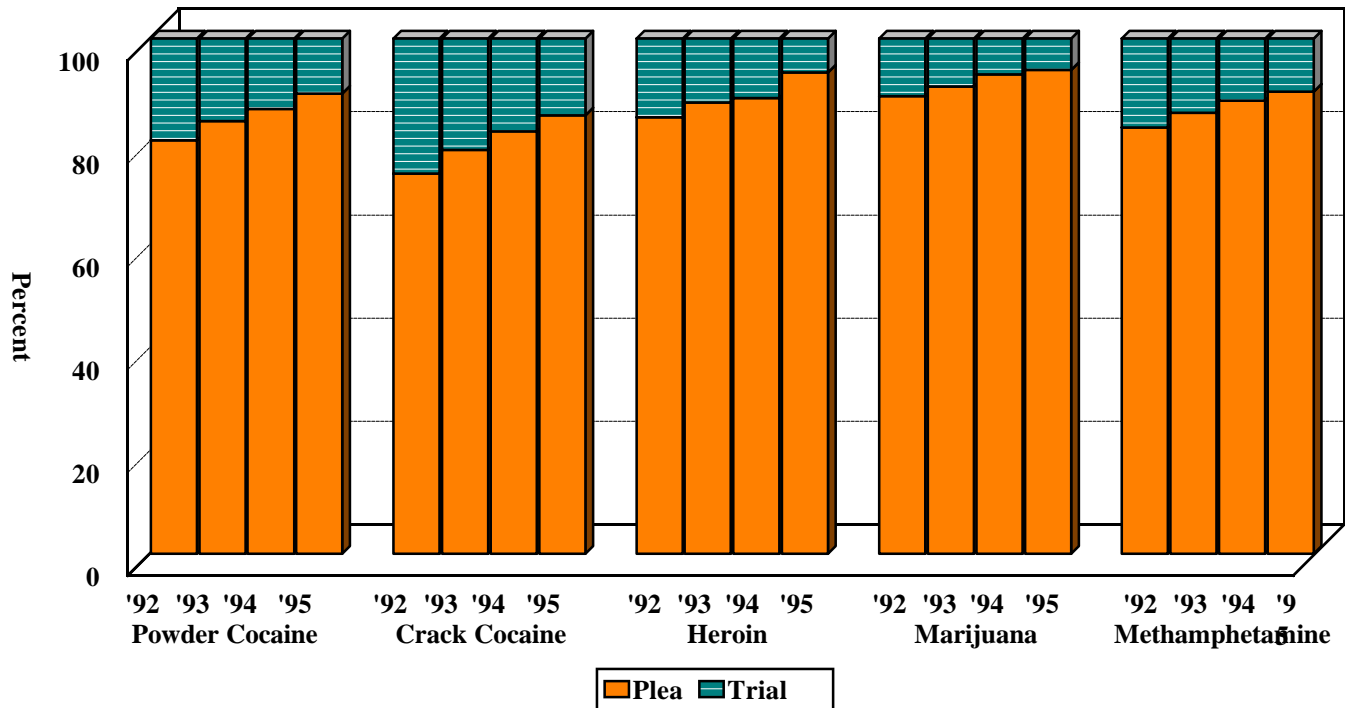
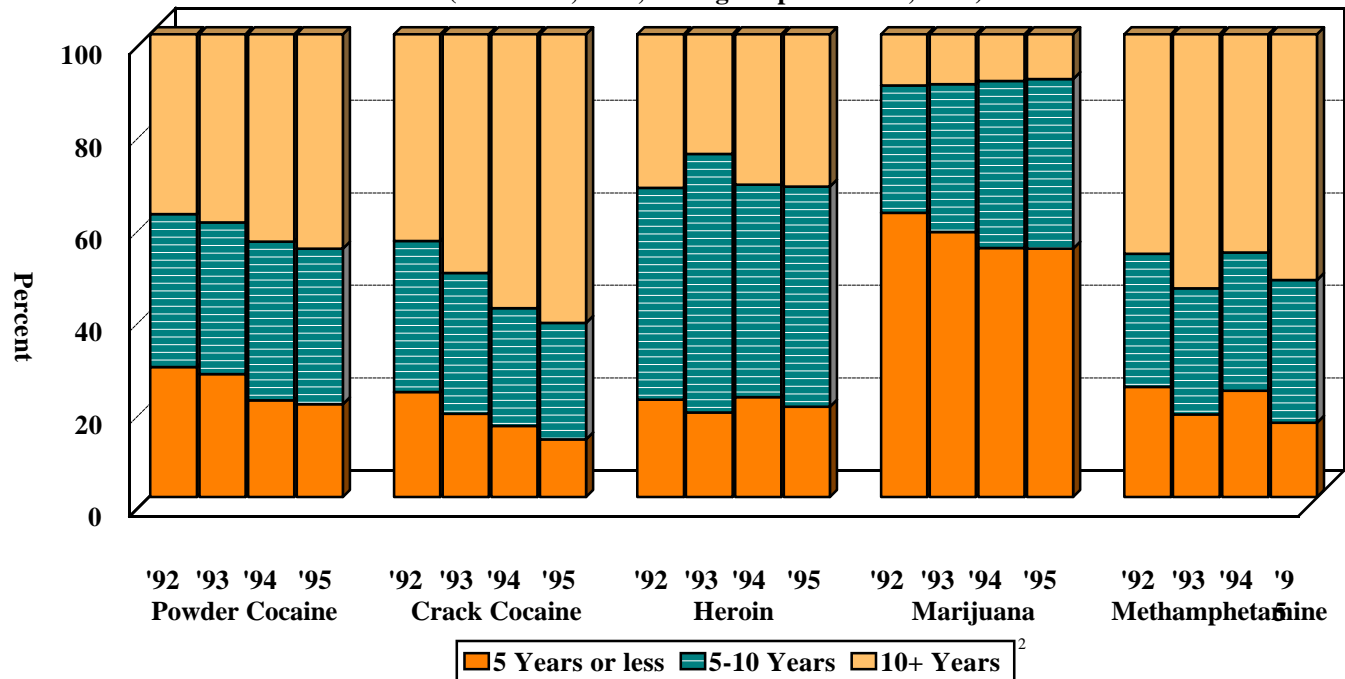


Figure R
BASE OFFENSE LEVEL BY DRUG TYPE AND YEAR FOR DRUG¹
DEFENDANTS
 (October 1, 1991, through September 30, 1995)



¹ Only cases sentenced under §§2D1.1 (Drug Trafficking), 2D1.2 (Protected Locations), 2D1.5 (Continuing Criminal Enterprise), 2D1.8 (Rent/Manage Drug Establishment), or 2D2.1 (Simple Possession) are depicted in these figures. Only cases with complete guideline application information were included in the second figure. Additional cases were excluded due to missing information on type of drug, mode of conviction, or base offense level.

² Base offense level in drug cases is established by the quantity of drug involved in the case. For this analysis BOL < 26 represents defendants who, based on quantity alone, are exposed to sentences of up to 63 months at Criminal History Category I. BOL 26-30 represents defendants who, based on quantity alone, are exposed to sentences between 63 and 121 months at Criminal History Category I. BOL 32+ represents defendants who, based on quantity alone, are exposed to sentences at or above 121 months at Criminal History Category I.

Figure S
WEAPON STATUS BY DRUG TYPE AND YEAR FOR DRUG¹
DEFENDANTS
 (October 1, 1991, through September 30, 1995)

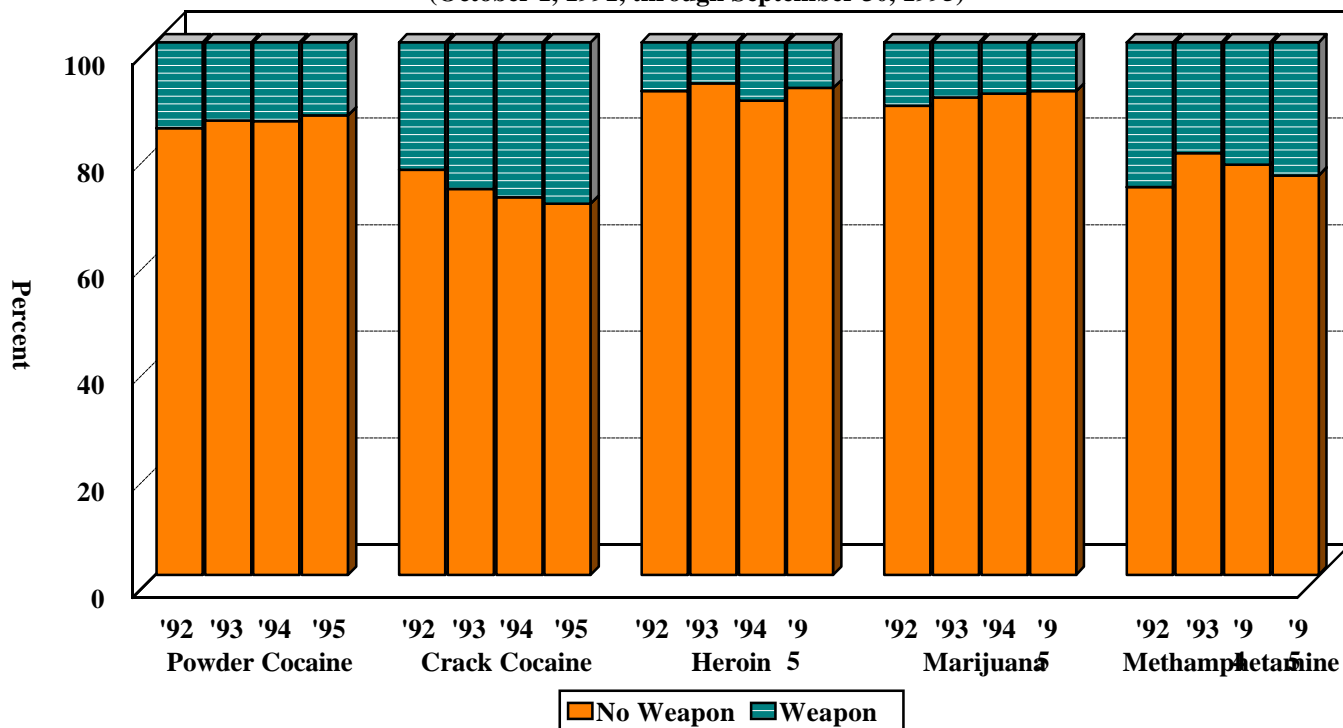
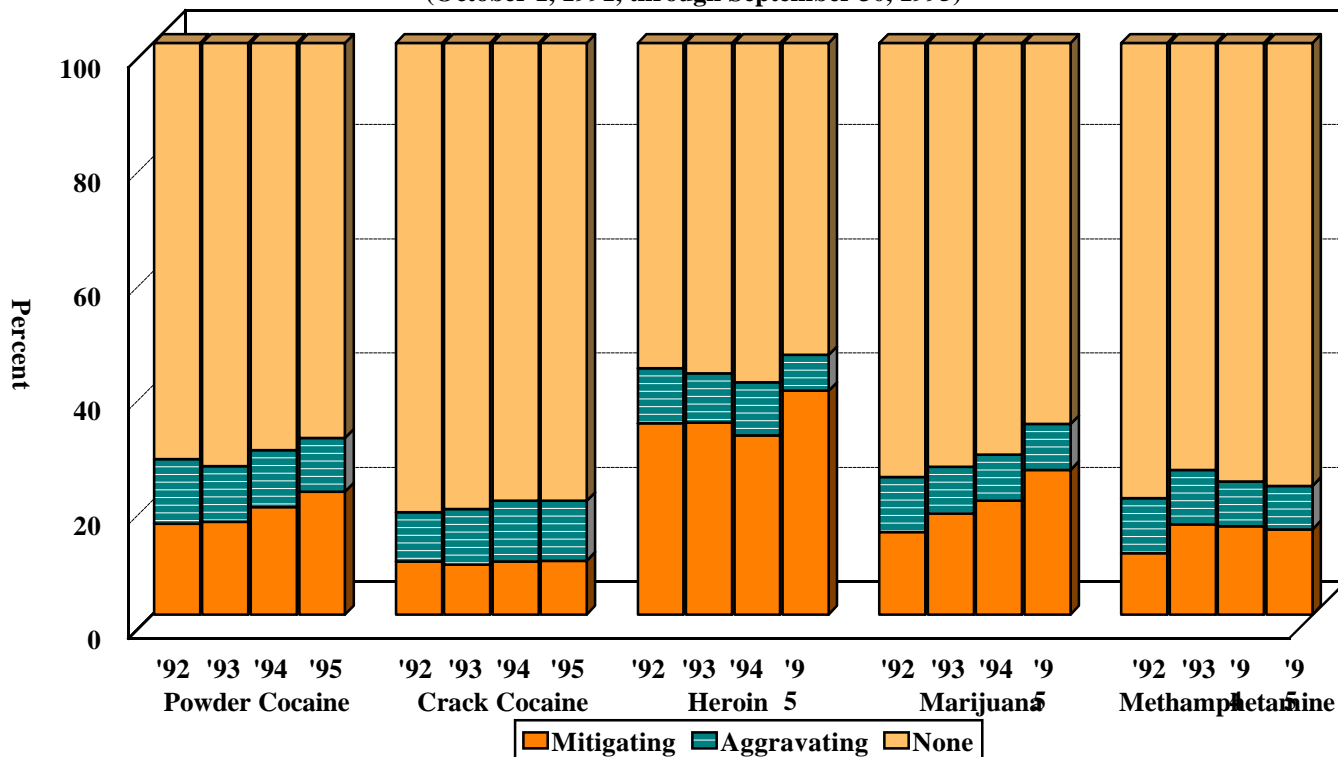


Figure T
ROLE BY DRUG TYPE AND YEAR FOR DRUG¹
DEFENDANTS
 (October 1, 1991, through September 30, 1995)



¹ Only cases sentenced under §§2D1.1 (Drug Trafficking), 2D1.2 (Protected Locations), 2D1.5 (Continuing Criminal Enterprise), 2D1.8 (Rent/Manage Drug Establishment), or 2D2.1 (Simple Possession) are depicted in these figures. Only cases with complete guideline application information were included. Additional cases were excluded due to missing information on type of drug, weapon status, or role in the offense.

Figure U
ACCEPTANCE OF RESPONSIBILITY BY DRUG TYPE AND YEAR FOR DRUG¹
DEFENDANTS
 (October 1, 1991, through September 30, 1995)

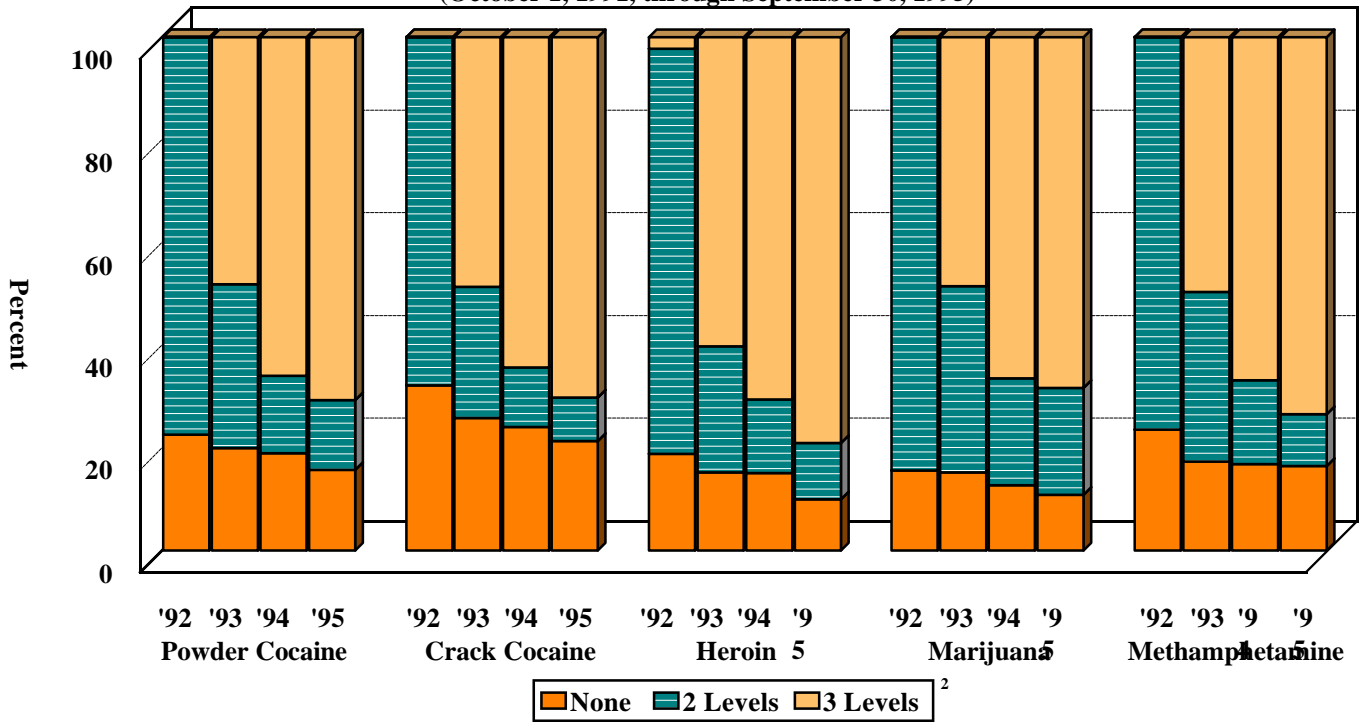
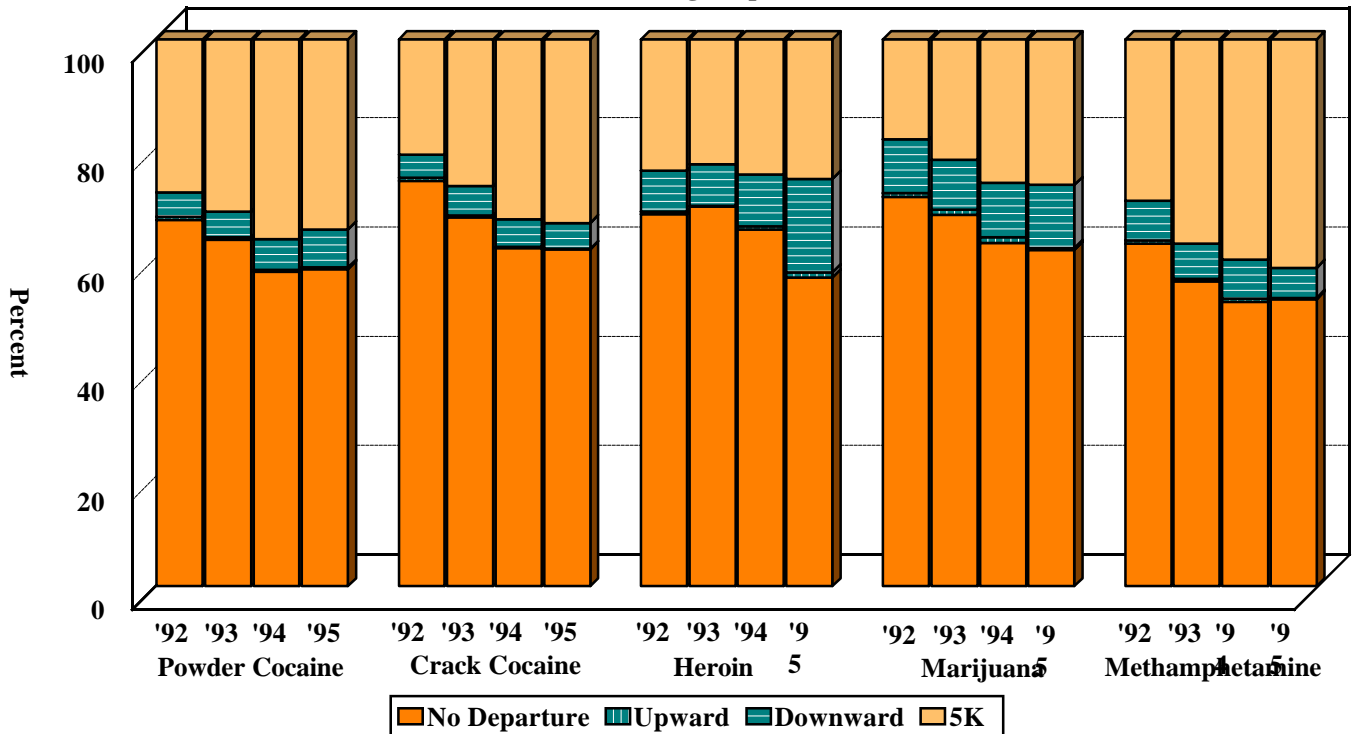


Figure V
DEPARTURE STATUS BY DRUG TYPE AND YEAR FOR DRUG¹
DEFENDANTS
 (October 1, 1991, through September 30, 1995)

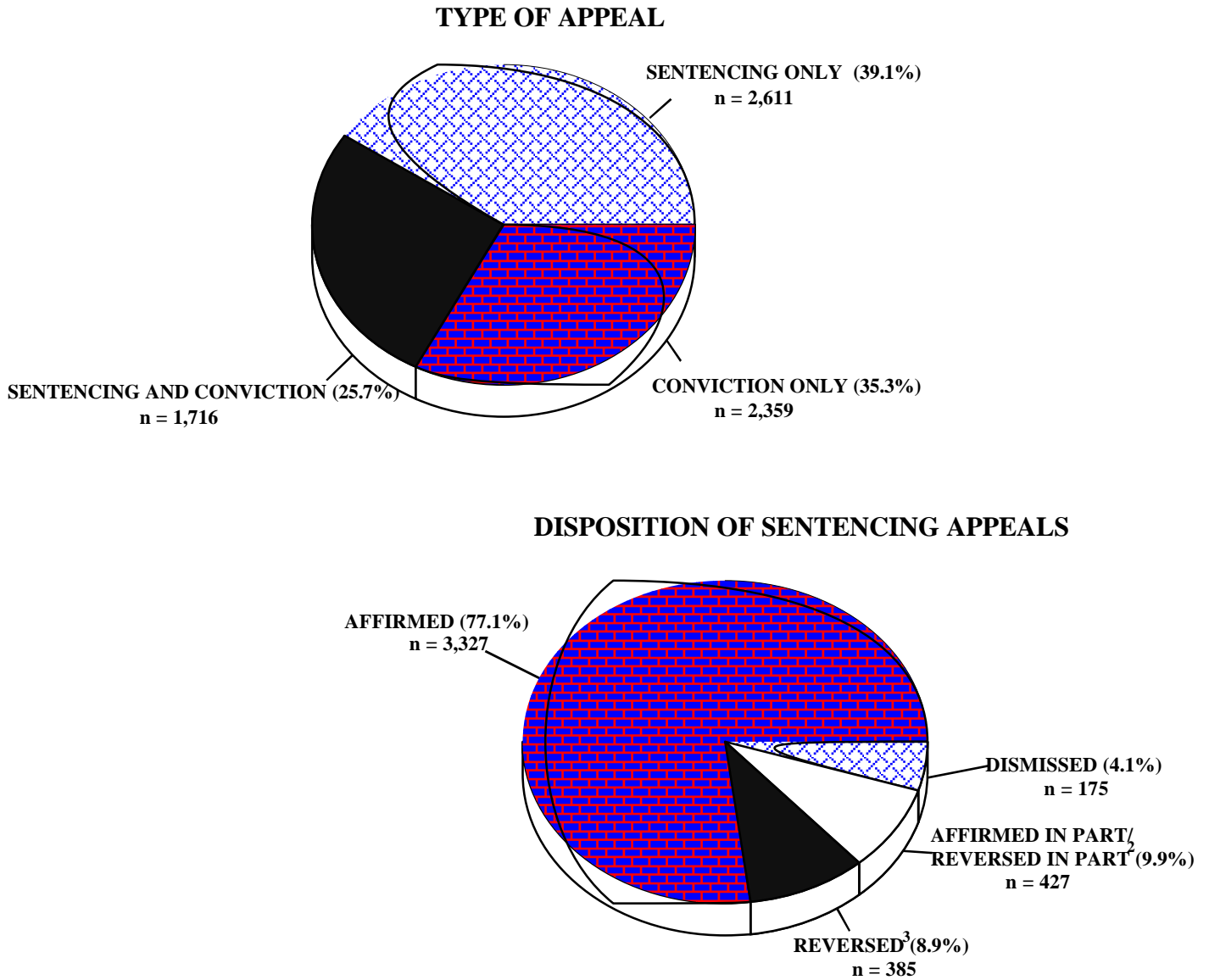


¹ Only cases sentenced under §§2D1.1 (Drug Trafficking), 2D1.2 (Protected Locations), 2D1.5 (Continuing Criminal Enterprise), 2D1.8 (Rent/Manage Drug Establishment), or 2D2.1 (Simple Possession) are depicted in these figures. Only cases with complete guideline application information were included in the first figure. Additional cases were excluded due to missing information on type of drug, acceptance of responsibility, or departure status.

² The three-level decrease was added to the Acceptance of Responsibility Guideline (§3E1.1) in fiscal year 1993.

Figure X

TYPE AND DISPOSITION OF APPEALS CASES¹
(October 1, 1994, through September 30, 1995)



¹Of the 6,863 appeals defendants, 177 (2.6%) had missing information on type of appeal.

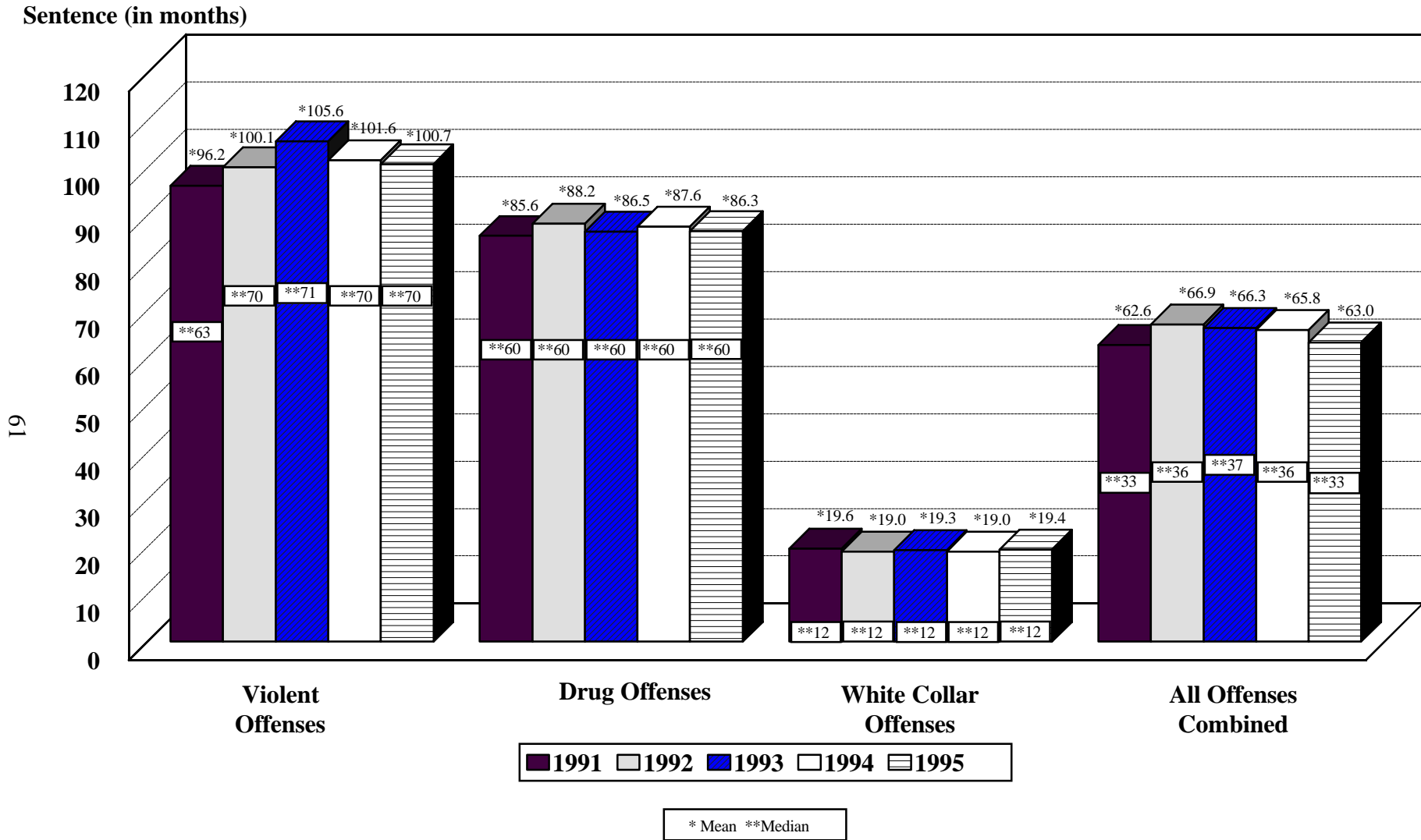
²Of the 427 cases affirmed in part and reversed in part, 397 (93.07%) were remanded to the lower courts.

³Of the 385 cases reversed by the courts of appeals, 349 (90.6%) were remanded to the lower courts.

SOURCE: U.S. Sentencing Commission, 1995 Appeals Datafile, APPFY95.

Figure F

AVERAGE LENGTH OF IMPRISONMENT BY GROUPED PRIMARY OFFENSE CATEGORIES AND YEAR¹
(October 1, 1990, through September 30, 1995)



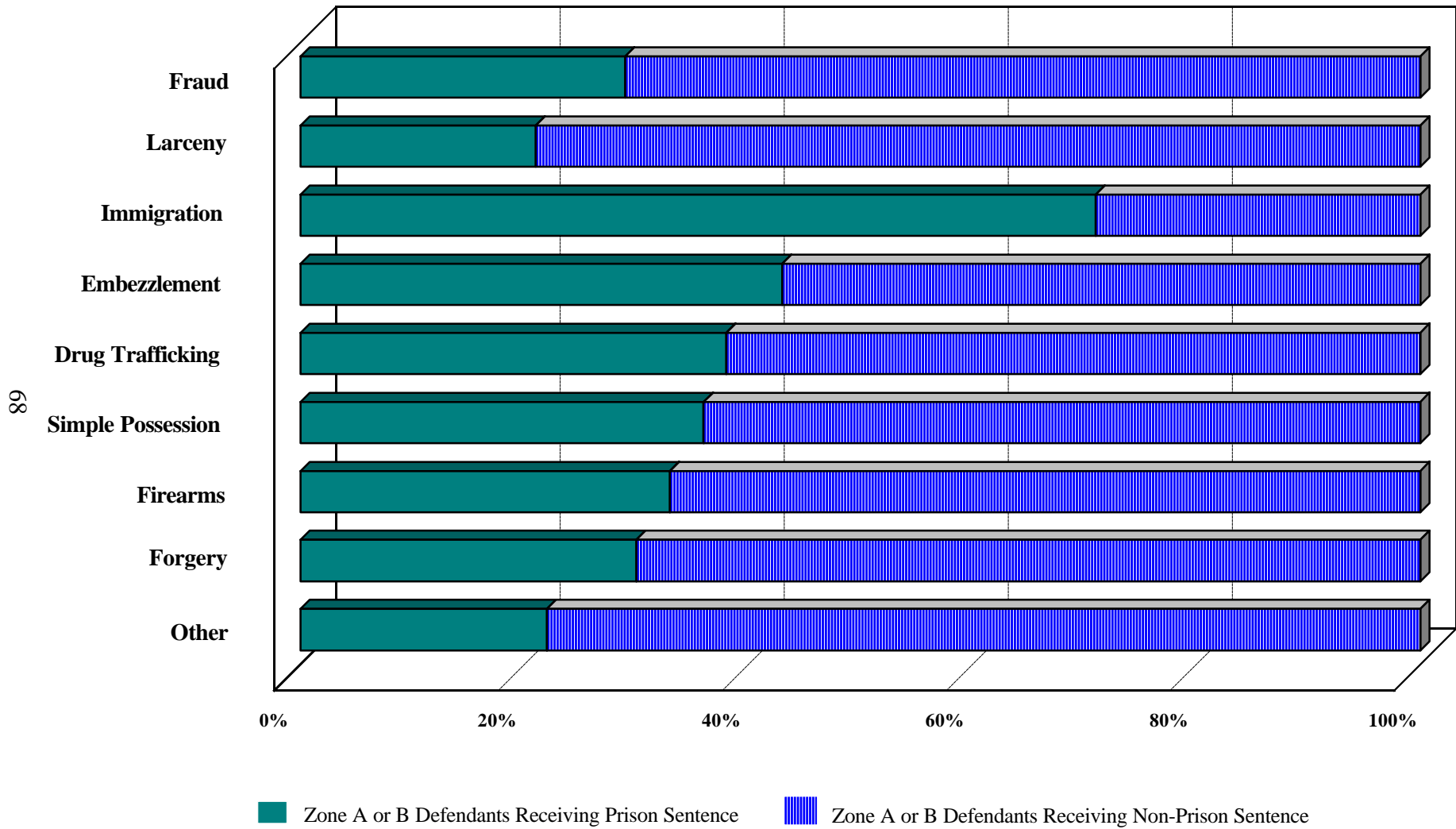
¹ Violent Offenses encompass the following offense types: murder, manslaughter, kidnapping, sexual abuse, assault, bank robbery, and arson. Drug Offenses include the following offense types: drug trafficking, drug communication facilities, and simple drug possession. White Collar Offenses include the following offense types: fraud, embezzlement, forgery/counterfeiting, bribery, tax offenses, and money laundering. The information presented in this table does not include any confinement as defined in USSG §5C1.1. Descriptions of variables used in this figure are provided in Appendix A.

SOURCE: U.S. Sentencing Commission, Monitoring Datafiles.

Figure G

IMPRISONMENT RATES OF DEFENDANTS ELIGIBLE FOR NON-PRISON SENTENCES BY SELECT PRIMARY OFFENSE TYPE¹

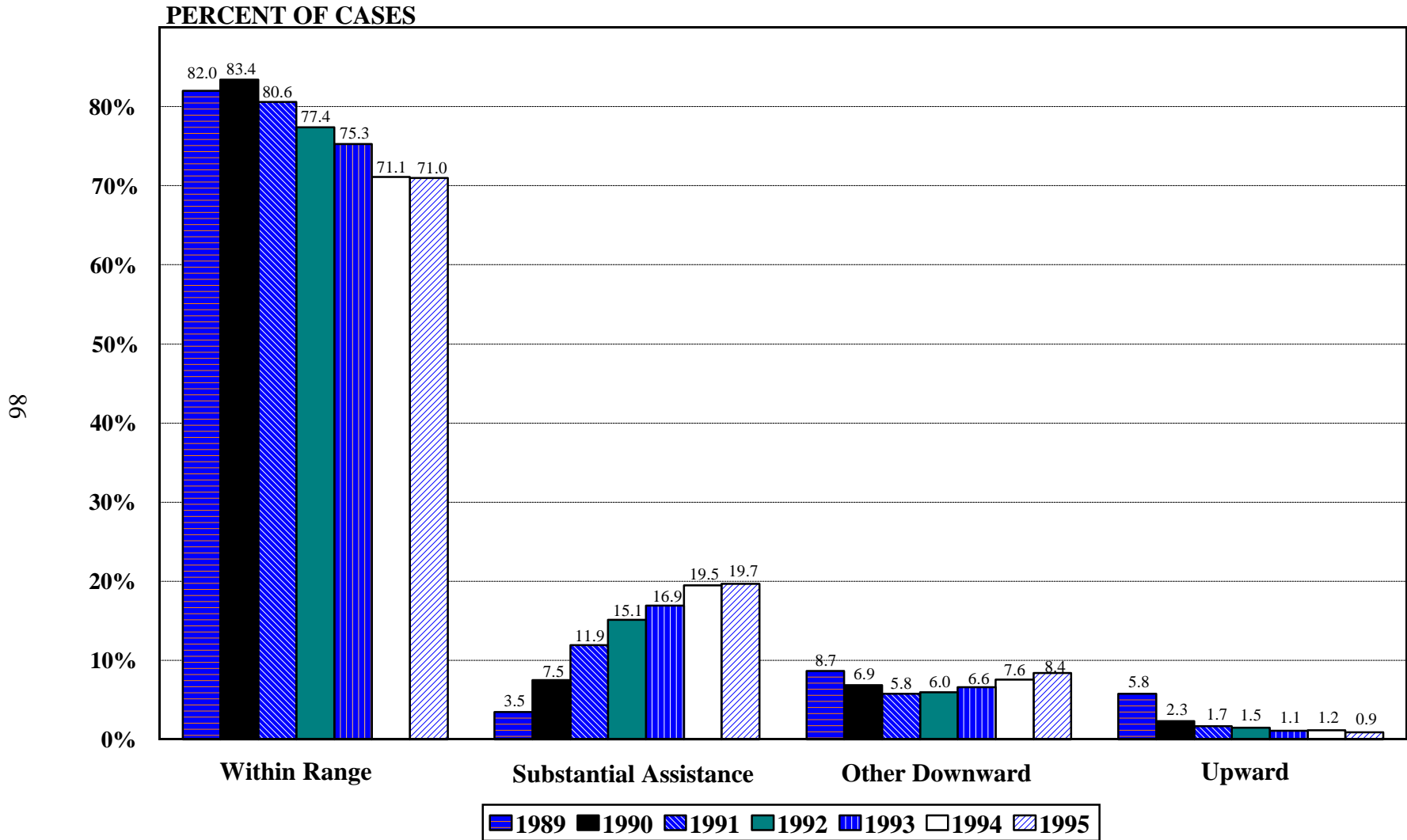
(October 1, 1994, through September 30, 1995)



¹ Of the 38,500 cases, the Commission received complete guideline application information for 32,855. Of these 32,855 cases, 7,592 were eligible for non-prison sentences because their guideline sentence ranges were in Zones A or B. In addition, 35 cases were excluded due to missing information on offense type. Prison sentences include either prison alone or prison with conditions of alternate confinement as defined in USSG §5C1.1. Non-prison sentences include either probation alone or probation with conditions of confinement. Descriptions of variables used in this figure are provided in Appendix A.

Figure H

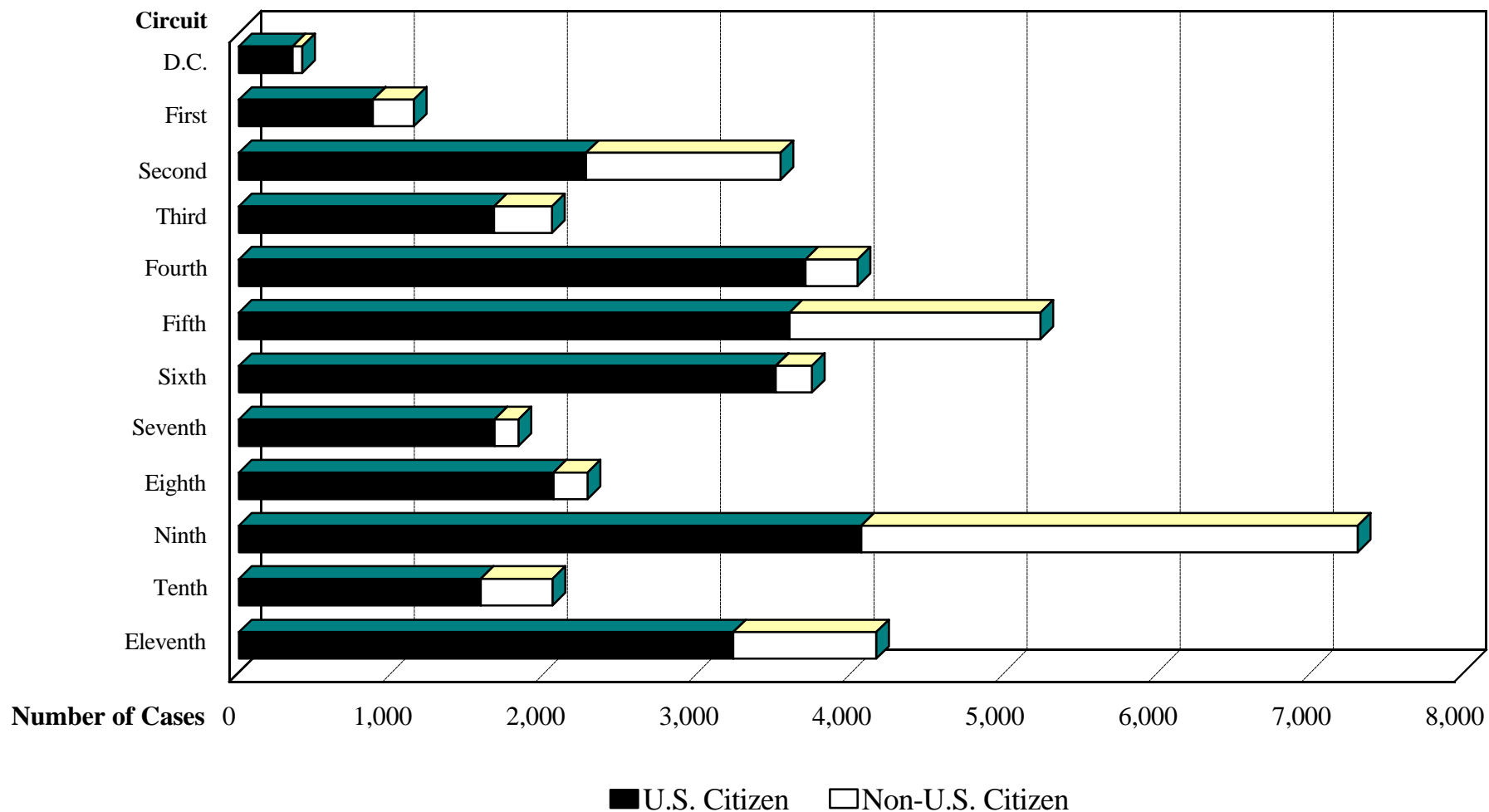
TYPE OF DEPARTURE BY SENTENCING YEAR¹
 (January 19, 1989, through September 30, 1995)



¹ Information for 1989 and 1990 is derived from a 25-percent random sample of cases. For 1991 - 1995, departure information represents all guideline cases for which complete court data are available. Additionally, 1989 information is for 1/19/89 - 12/31/89; the Commission changed to a fiscal year format beginning in 1990. This change in reporting practice results in an overlap of case reporting from October 1989 through December 1989. Descriptions of variables used in this figure are provided in Appendix A.

SOURCE: U.S. Sentencing Commission, Monitoring Datafiles.

Figure I
DEFENDANT CITIZENSHIP STATUS BY CIRCUIT¹
(October 1, 1994, through September 30, 1995)



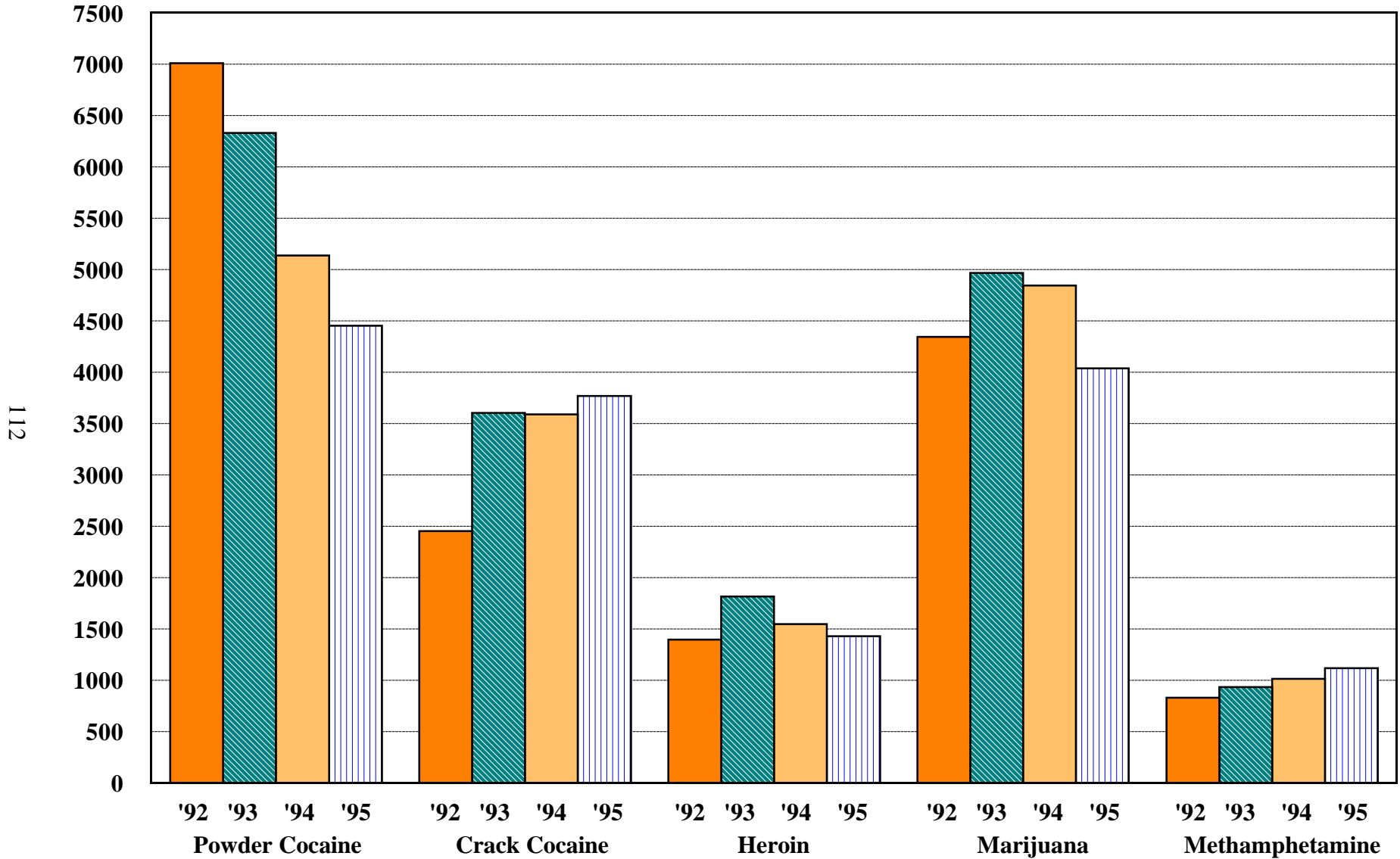
95

¹ Of the 39,500 cases, 736 were excluded due to missing citizenship information. Descriptions of variables used in this figure are provided in Appendix A.

SOURCE: U.S. Sentencing Commission, 1995 Datafile, MONFY95.

Figure L

NUMBER OF DRUG DEFENDANTS BY DRUG TYPE AND YEAR¹
(October 1, 1991, through September 30, 1995)

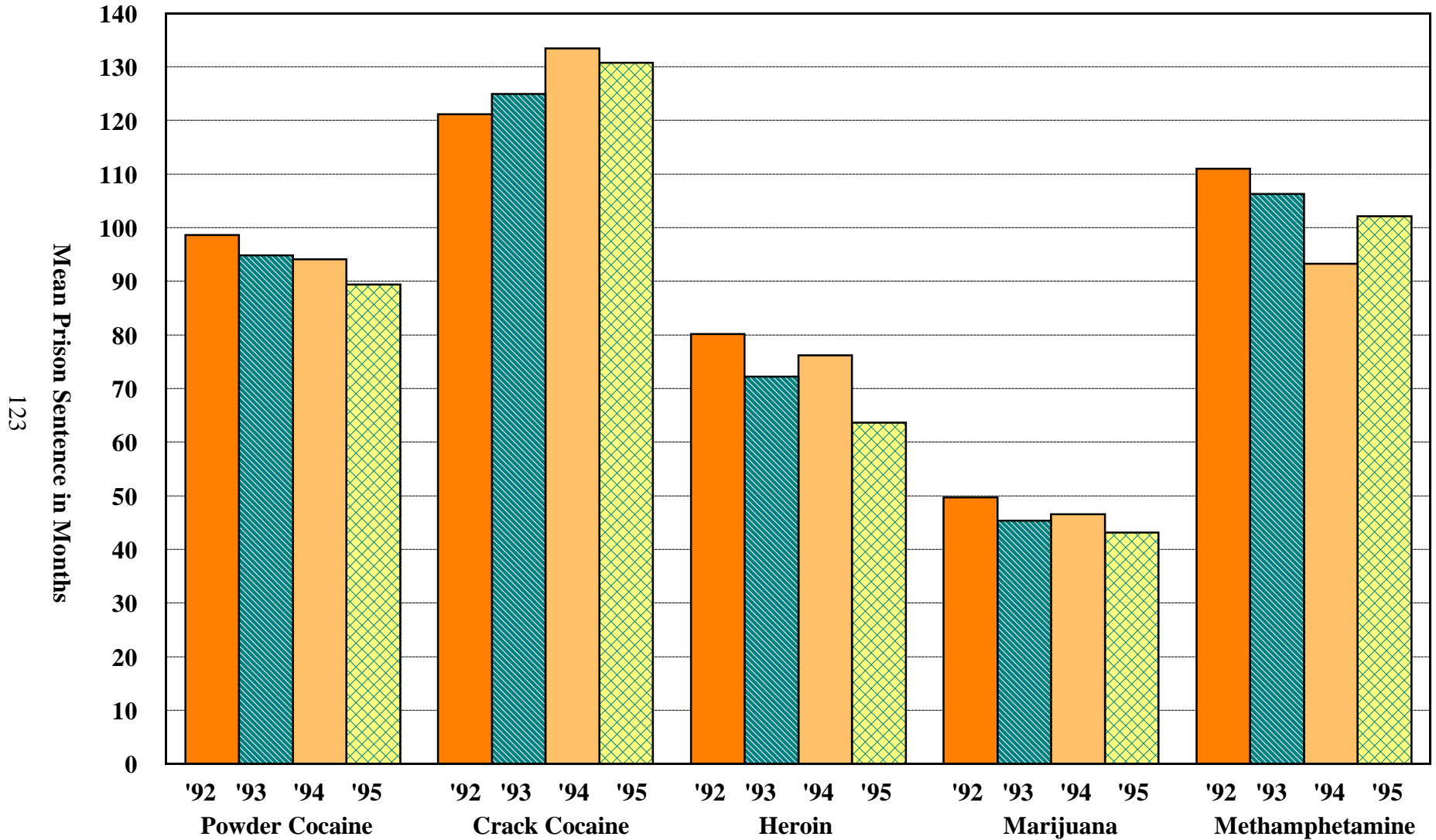


¹Only cases sentenced under §§2D1.1 (Drug Trafficking), 2D1.2 (Protected Locations), 2D1.5 (Continuing Criminal Enterprise), 2D1.8 (Rent/Manage Drug Establishment), or 2D2.1 (Simple Possession) are depicted in this figure. Additional cases were excluded due to missing information on drug type.

SOURCE: U.S. Sentencing Commission, 1992-1995 Datafiles, MONFY92-MONFY95.

Figure W

PRISON SENTENCE IMPOSED BY DRUG TYPE AND YEAR FOR DRUG DEFENDANTS¹
(October 1, 1991, through September 30, 1995)



¹Only cases sentenced under §§2D1.1 (Drug Trafficking), 2D1.2 (Protected Locations), 2D1.5 (Continuing Criminal Enterprise), 2D1.8 (Rent/Manage Drug Establishment), or 2D2.1 (Simple Possession) are depicted in this figure. Additionally, cases with zero months prison were excluded. Cases missing drug type or sentencing information were not included in this figure.