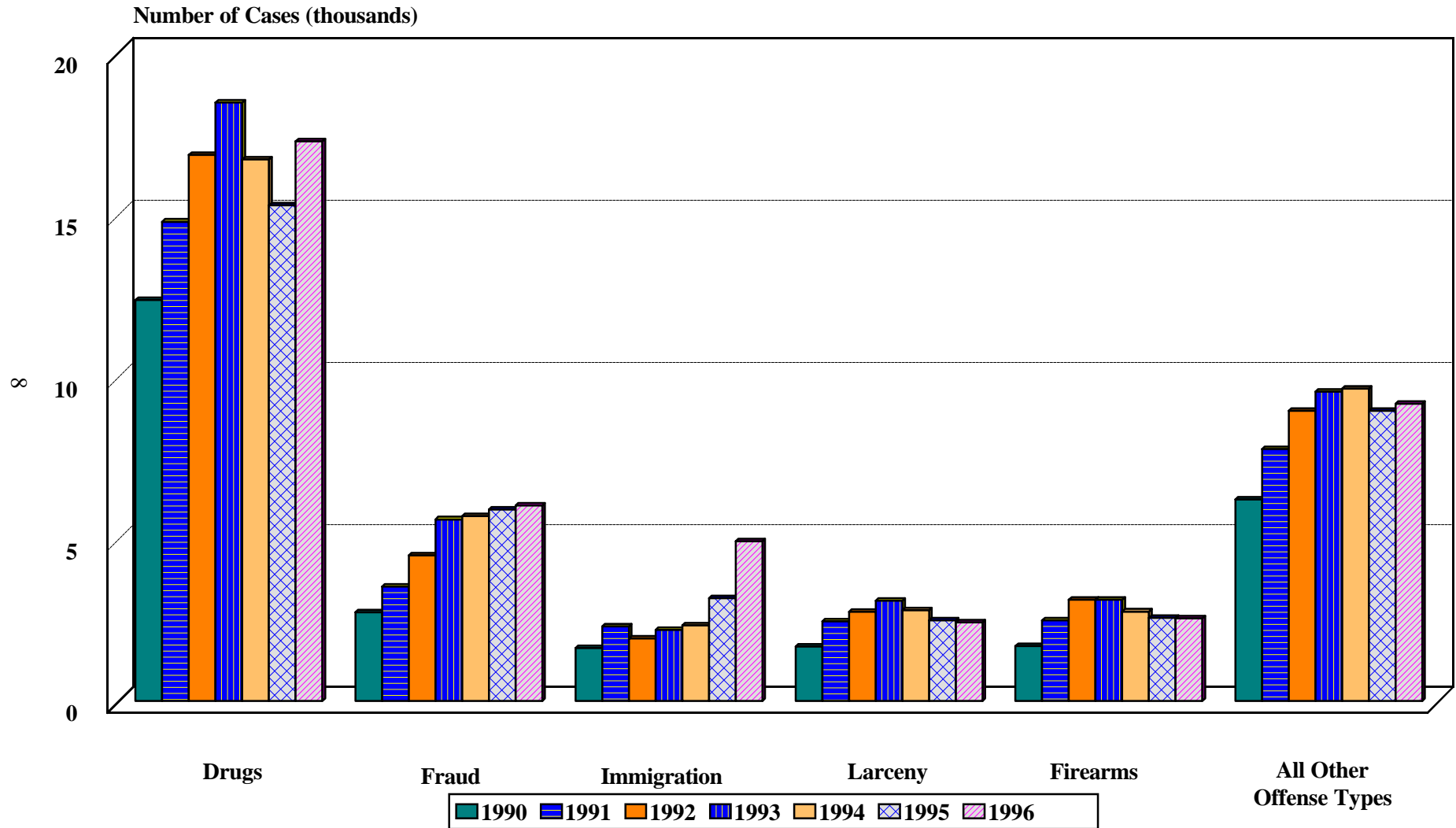


Figure B

NUMBER OF GUIDELINE CASES BY SELECTED OFFENSE TYPES AND YEAR ¹
(October 1, 1989, through September 30, 1996)



¹ Drug offenses in this bar chart include: trafficking, use of a communication facility, and simple possession. Descriptions of variables used in this figure are provided in Appendix A.

SOURCE: U.S. Sentencing Commission, 1990 - 1996 Monitoring Datafiles, MONFY90-MONFY96.