

Appendix A
Facility Maps with Monitoring Locations

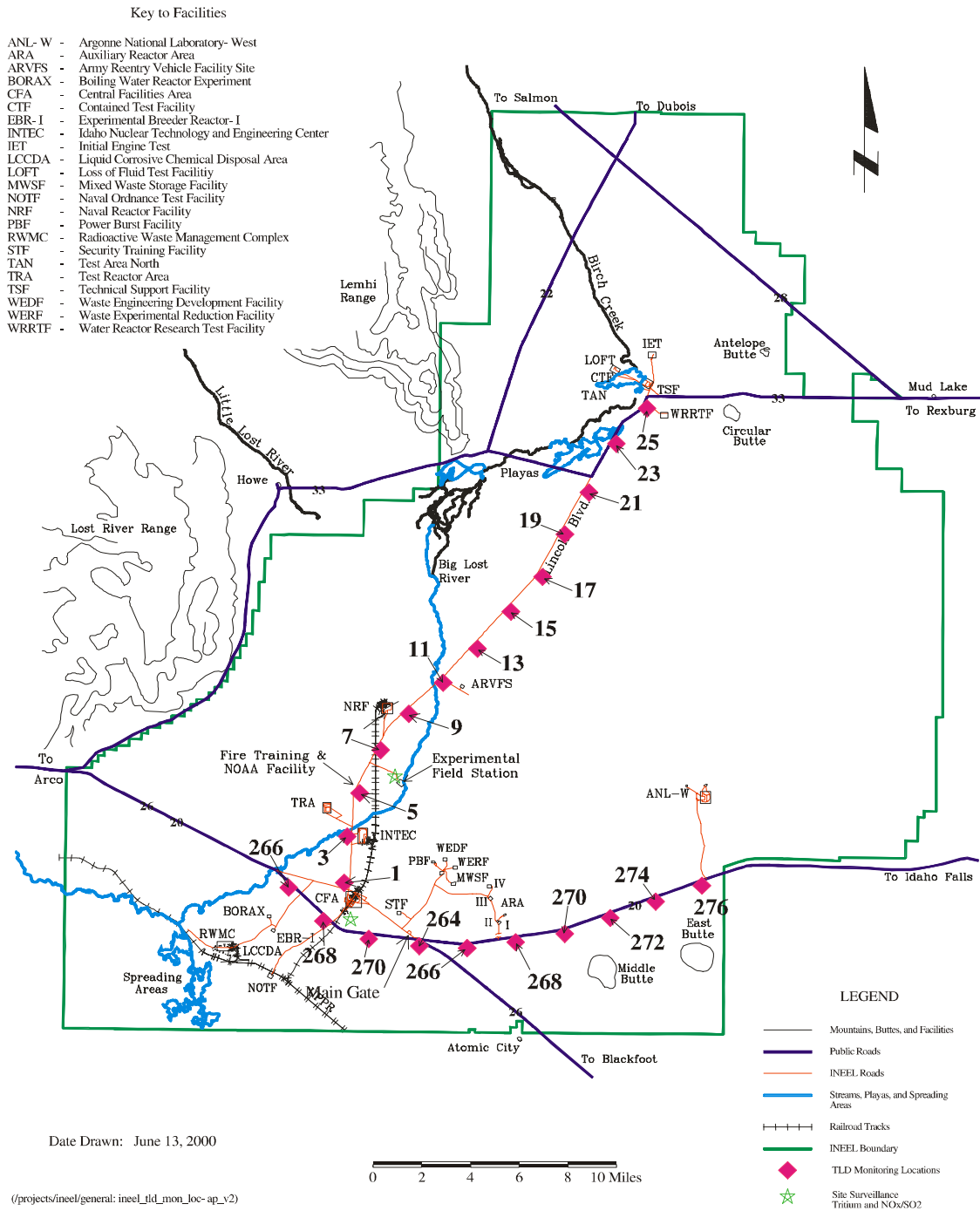


Figure A-1. Thermoluminescent dosimeter, tritium, and nitrogen dioxide/sulfur dioxide monitoring locations.

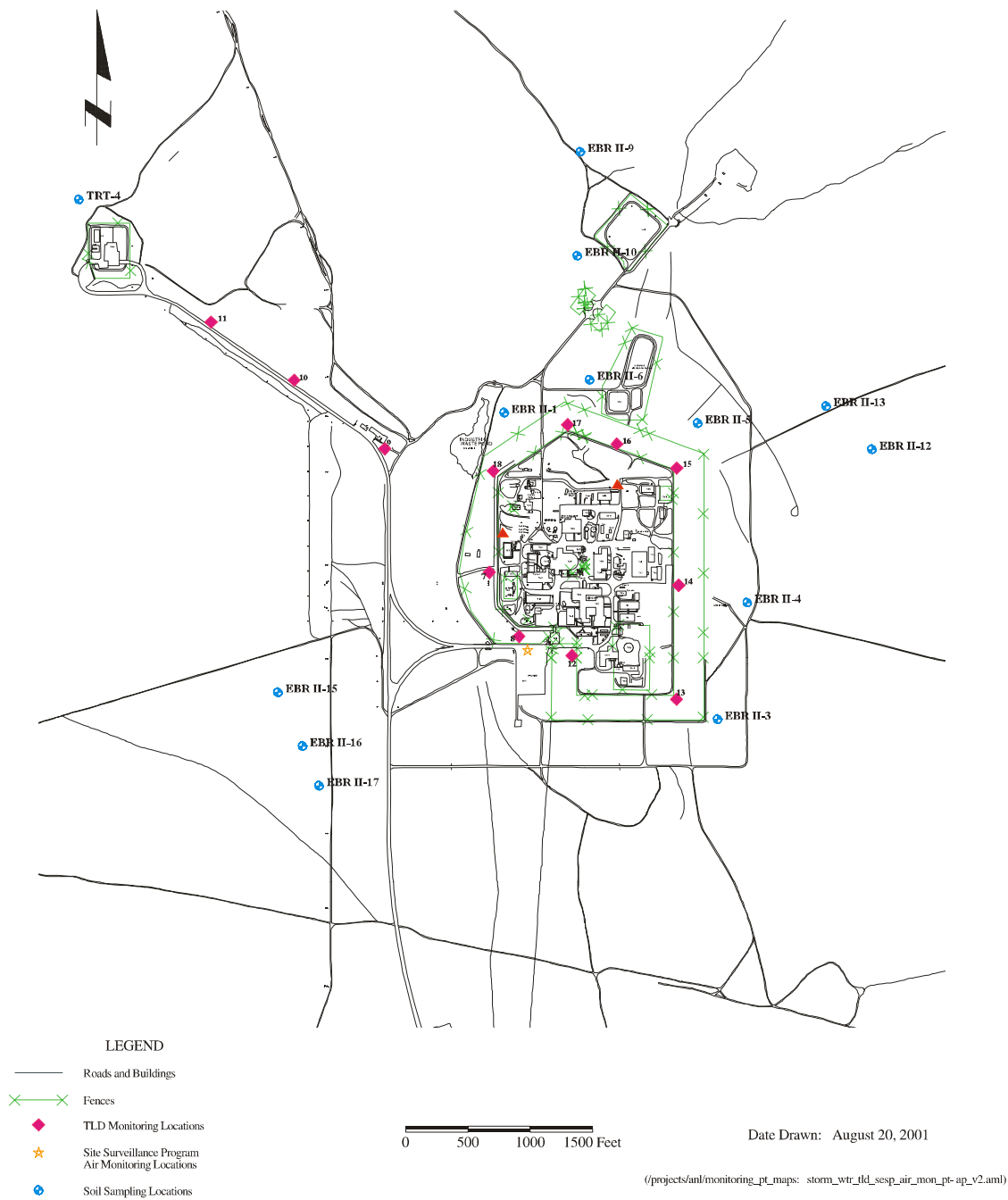


Figure A-2. Argonne National Laboratory-West monitoring locations.

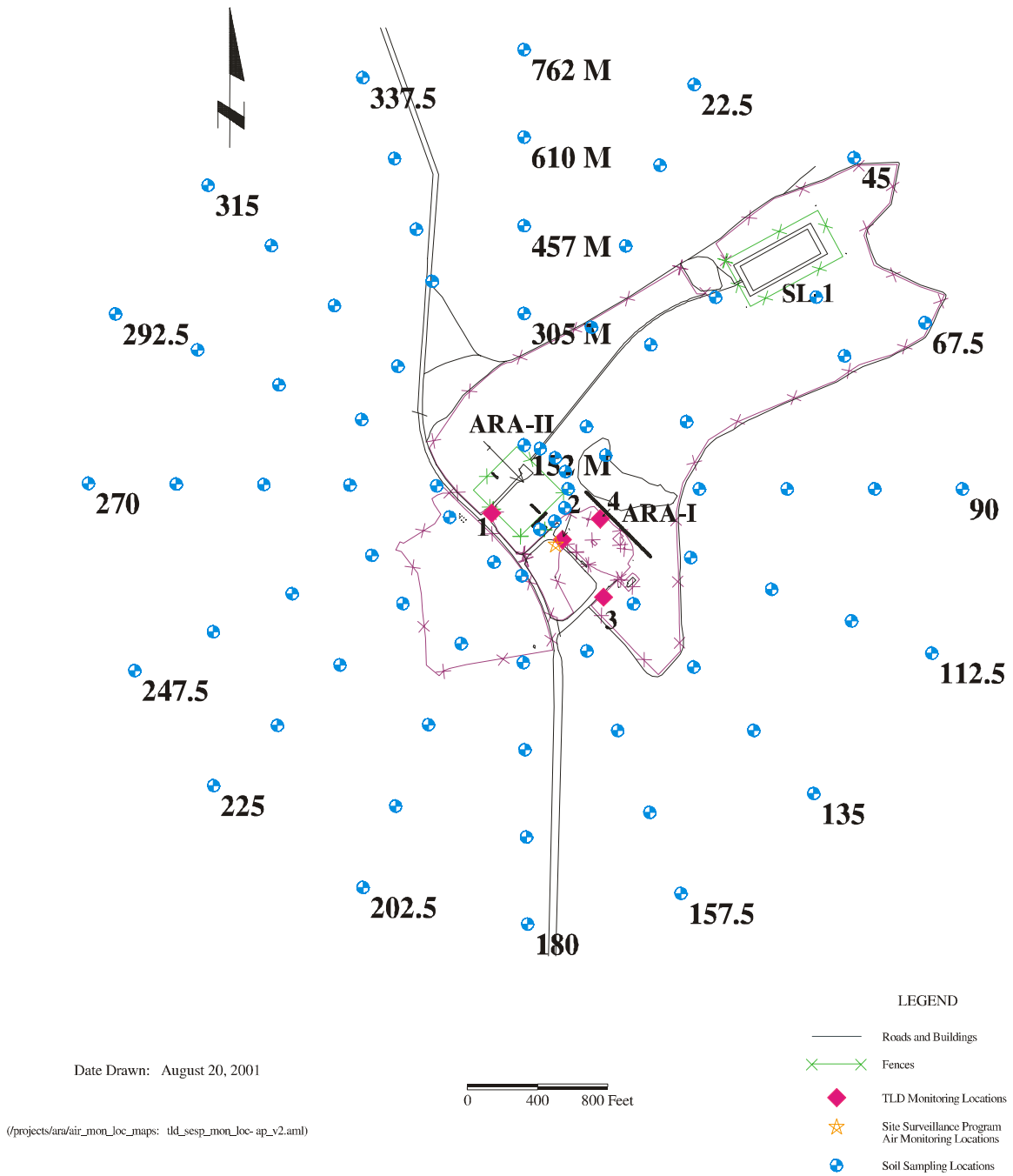


Figure A-3. Auxiliary Reactor Area monitoring locations.

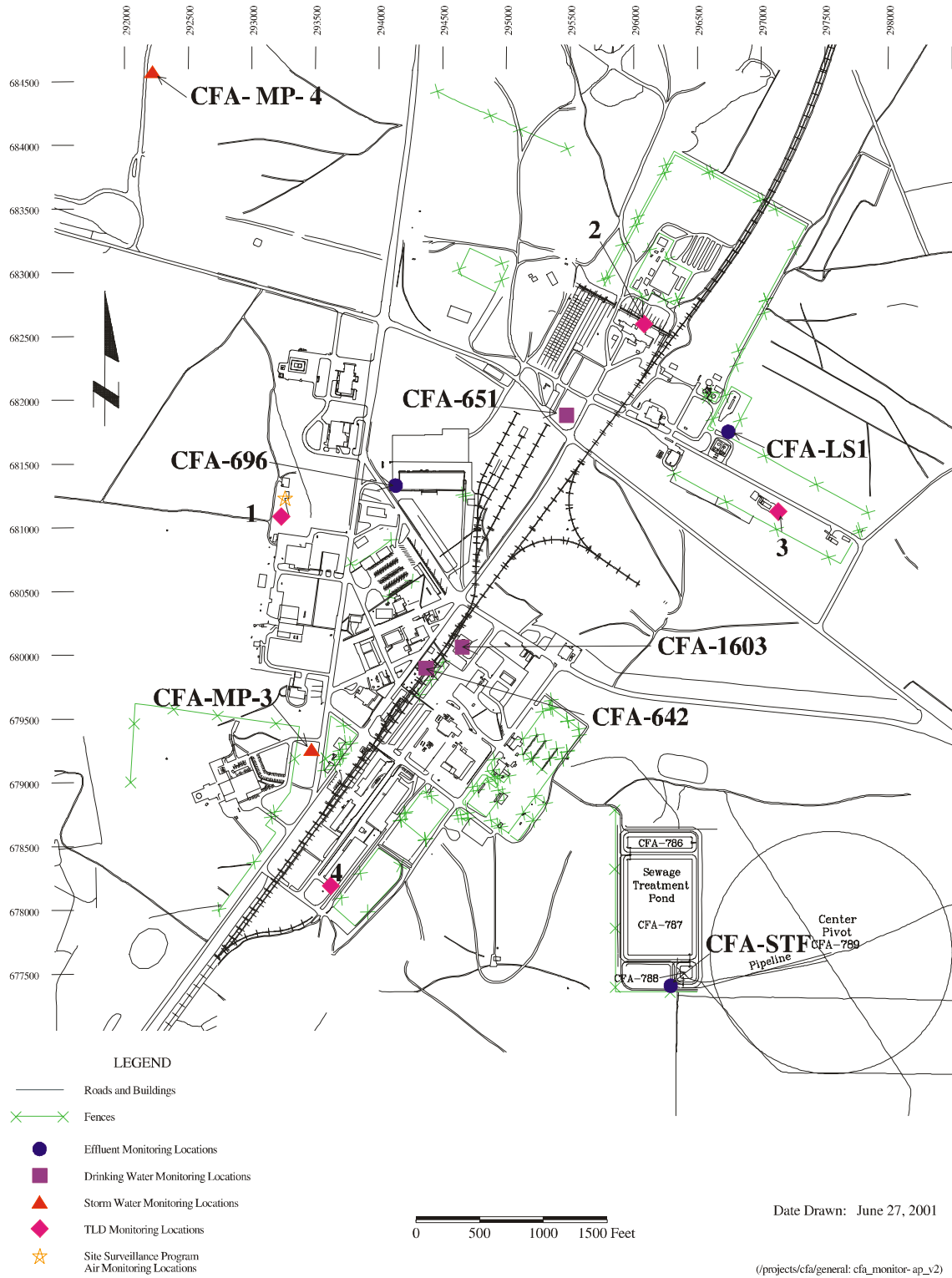


Figure A-4. Central Facilities Area monitoring locations.

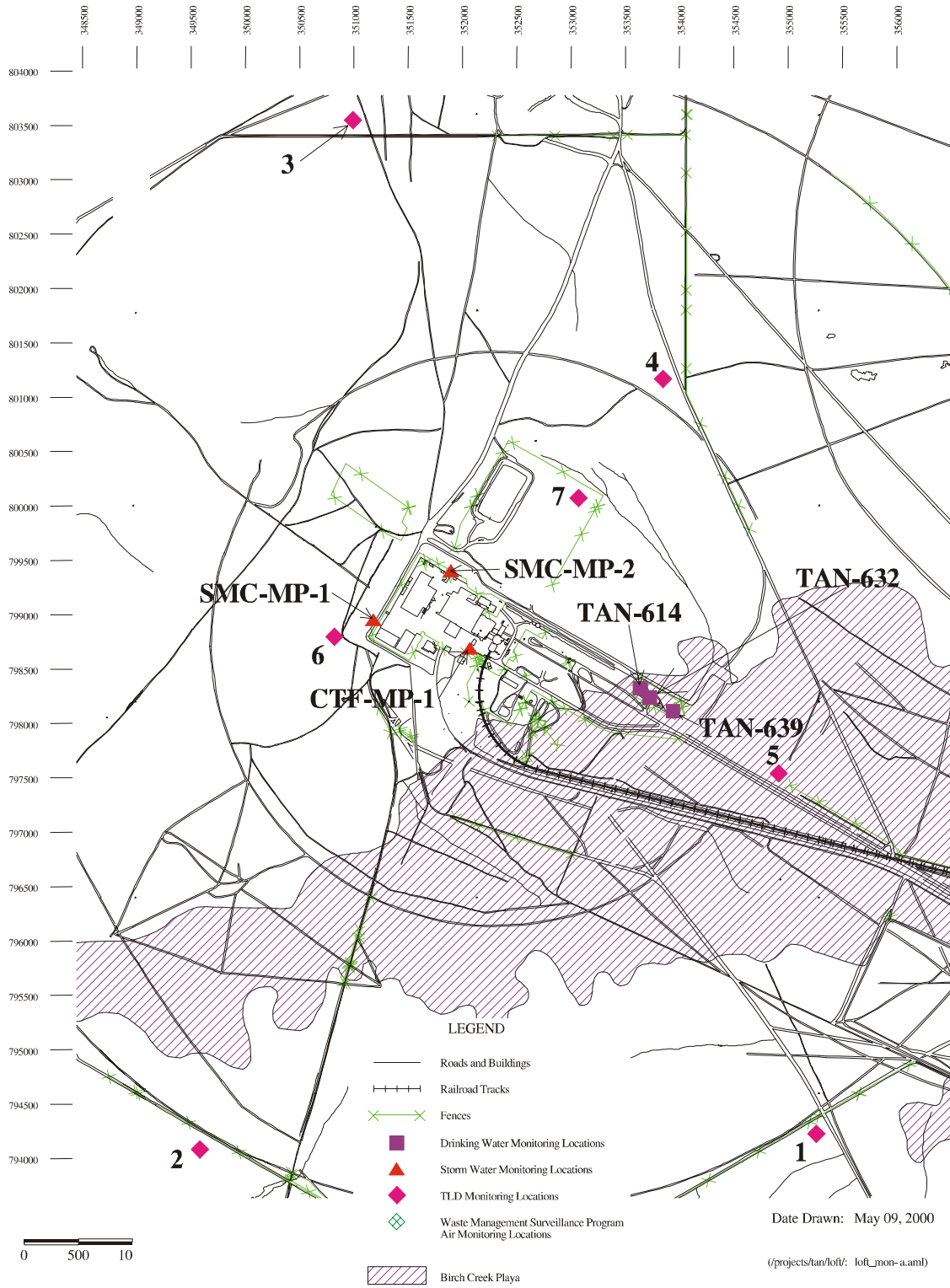
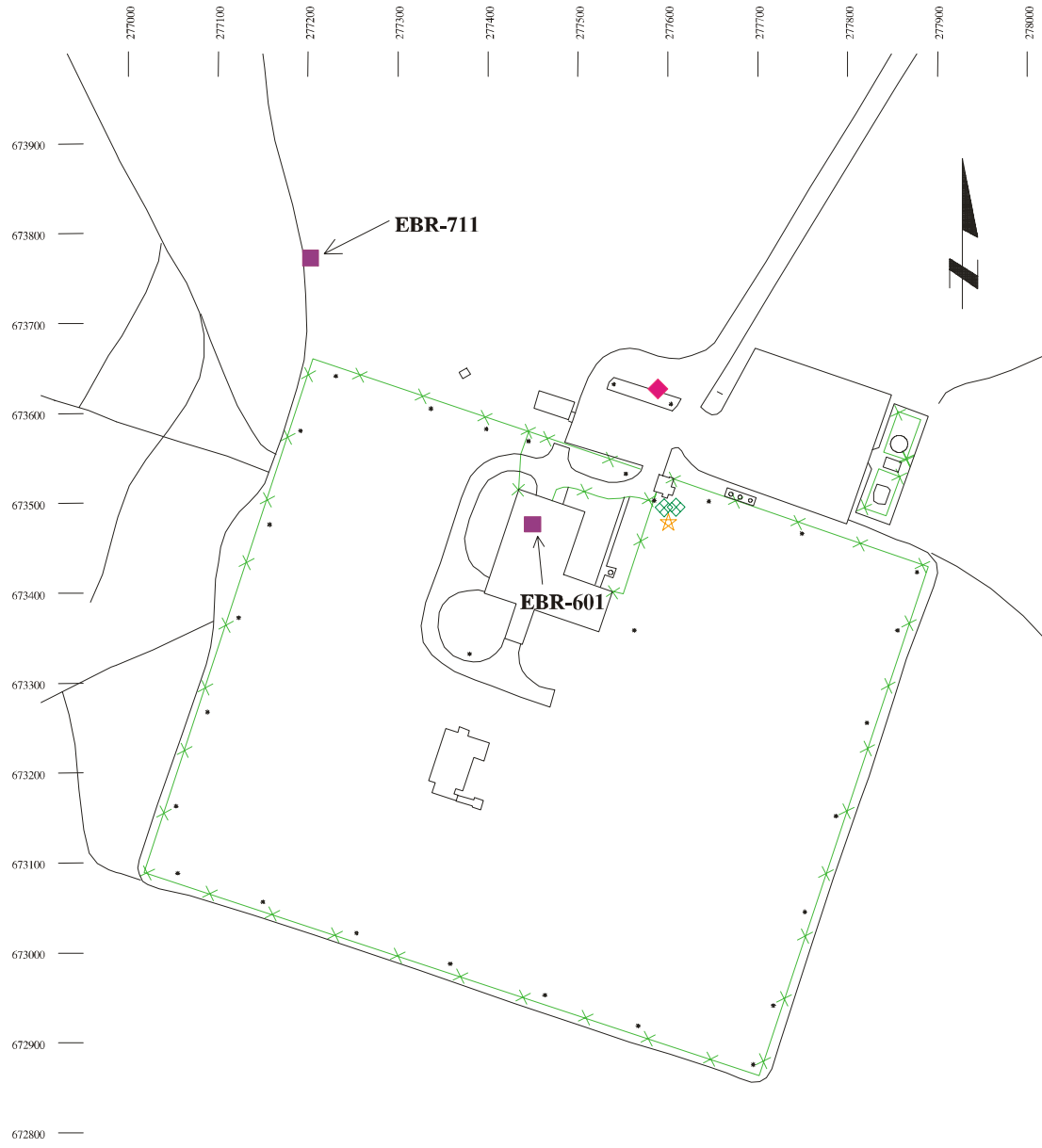
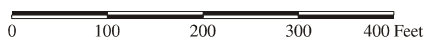


Figure A-5. Test Area North/Specific Manufacturing Capability monitoring locations.



- LEGEND**
- Roads and Buildings
 - X — Fences
 - Drinking Water Monitoring Locations
 - ★ Site Surveillance Program Air Monitoring Locations
 - ◇ Waste Management Surveillance Program Air Monitoring Locations
 - ◆ TLD Monitoring Location



Date Drawn: June 13, 2000

(projects/ebri/general: ebr_mon-a)

Figure A-6. Experimental Breeder Reactor-I monitoring locations.



Figure A-7. Gun Range monitoring locations.

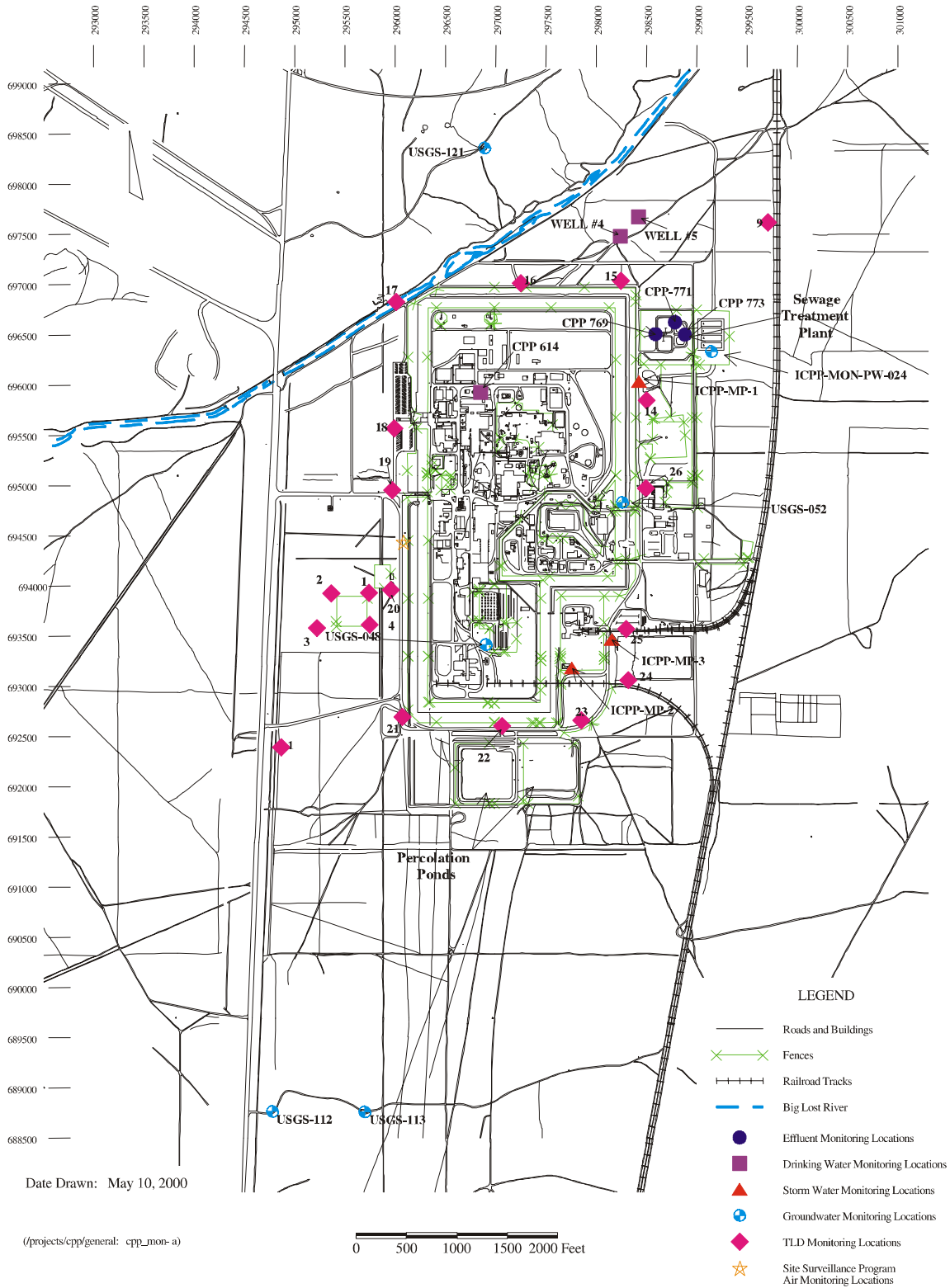


Figure A-8. Idaho Nuclear Technology and Engineering Center monitoring locations.

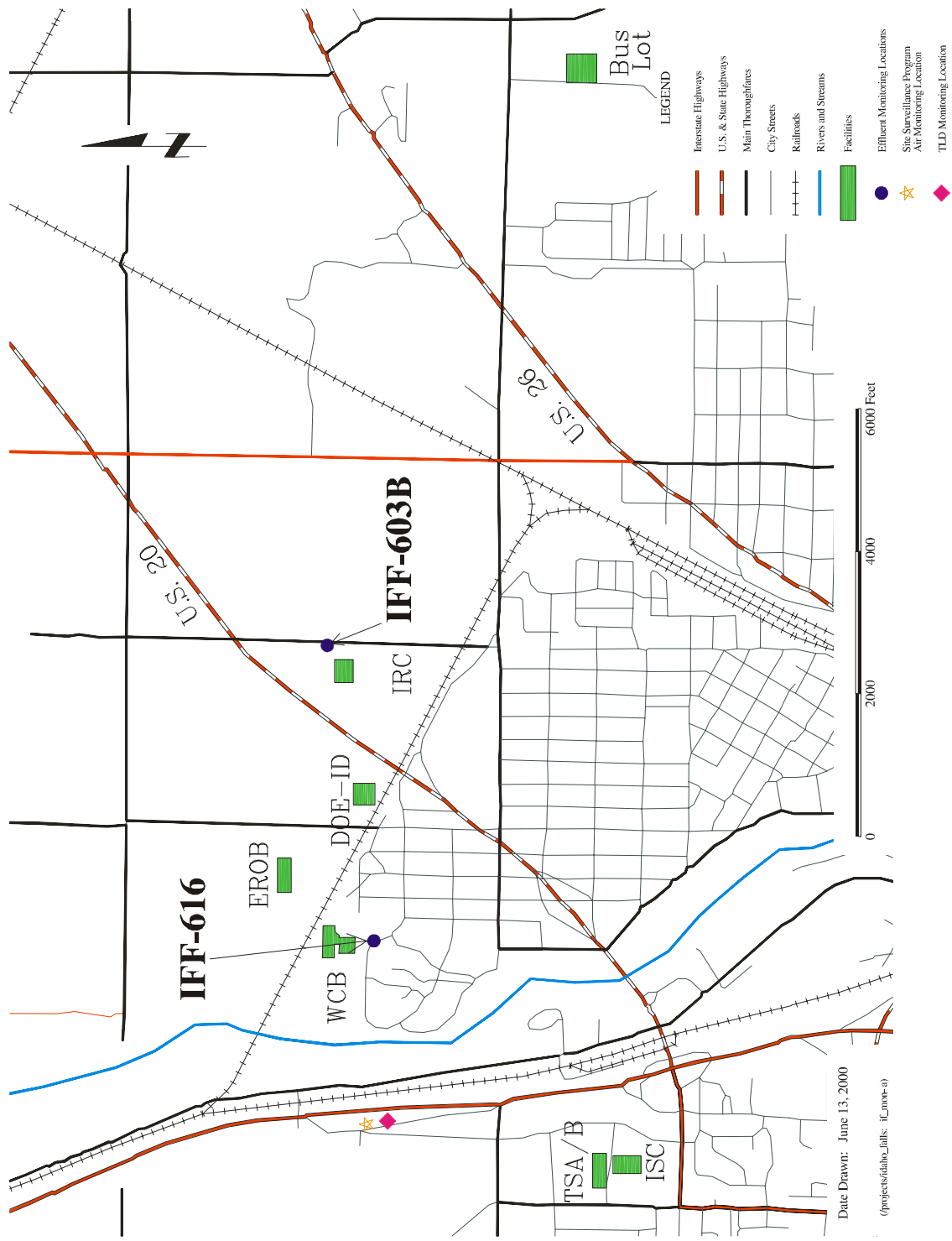


Figure A-9. Idaho Falls monitoring locations.

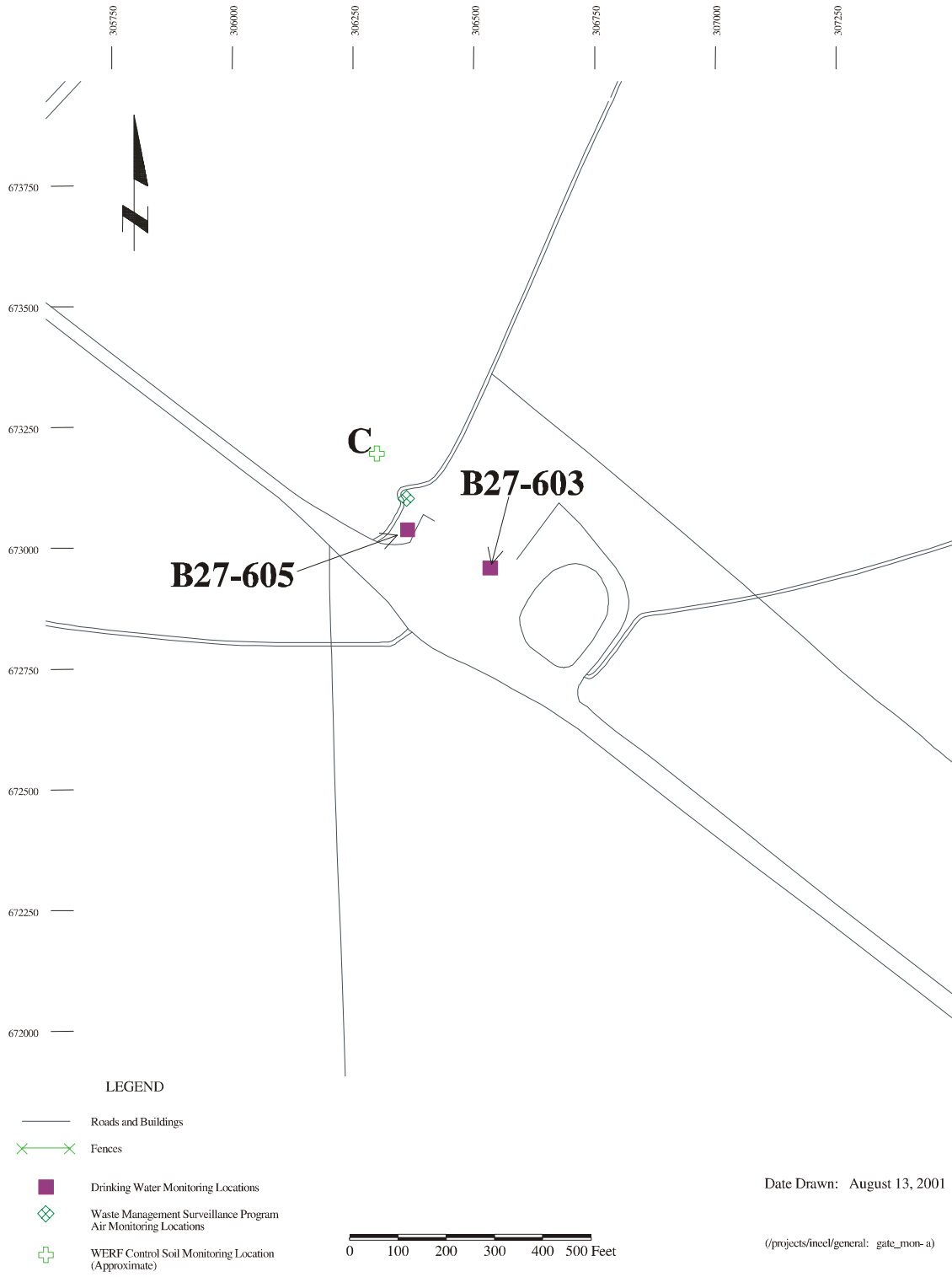


Figure A-10. Main Gate monitoring locations.

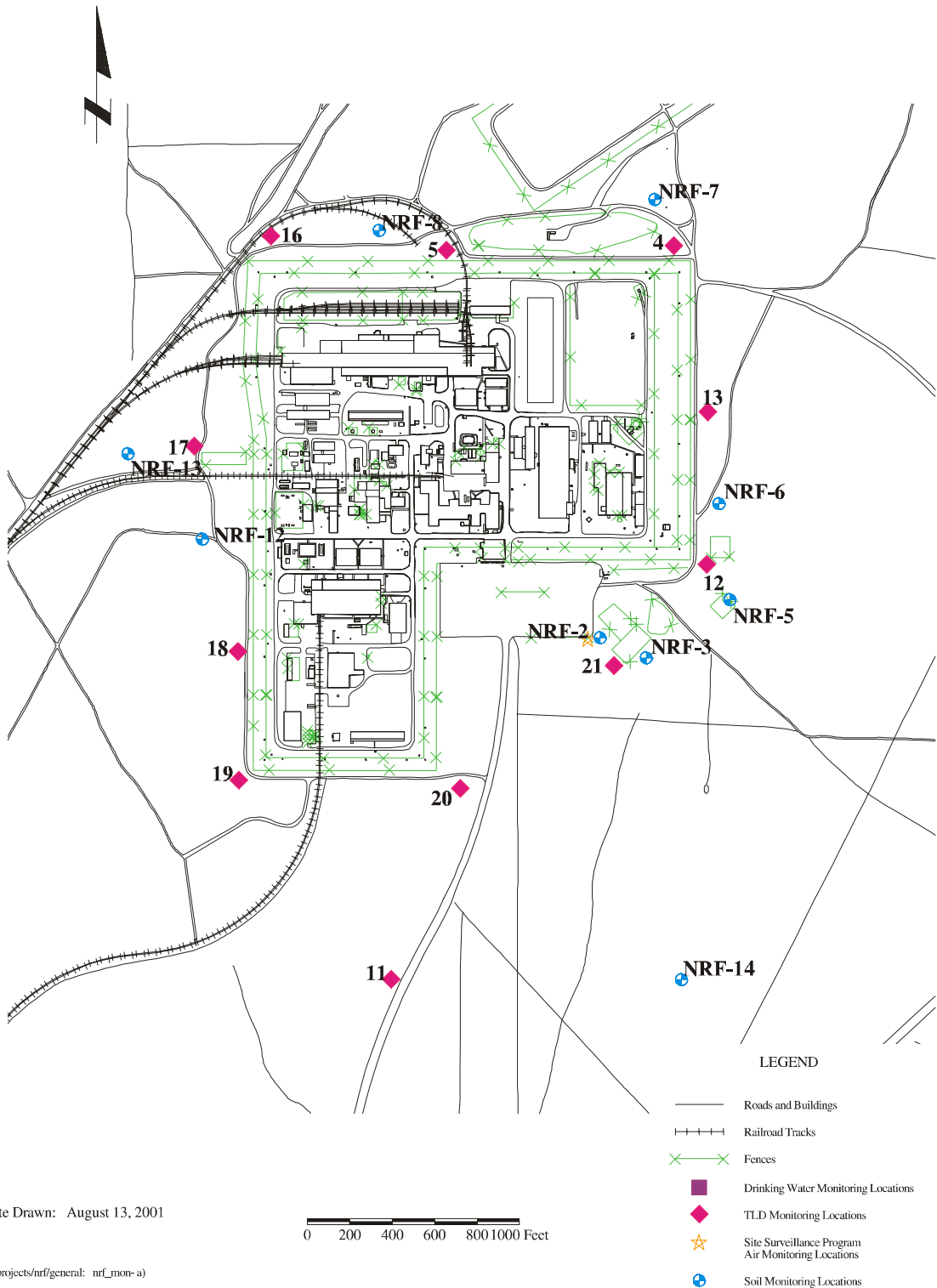


Figure A-11. Naval Reactors Facility monitoring locations.

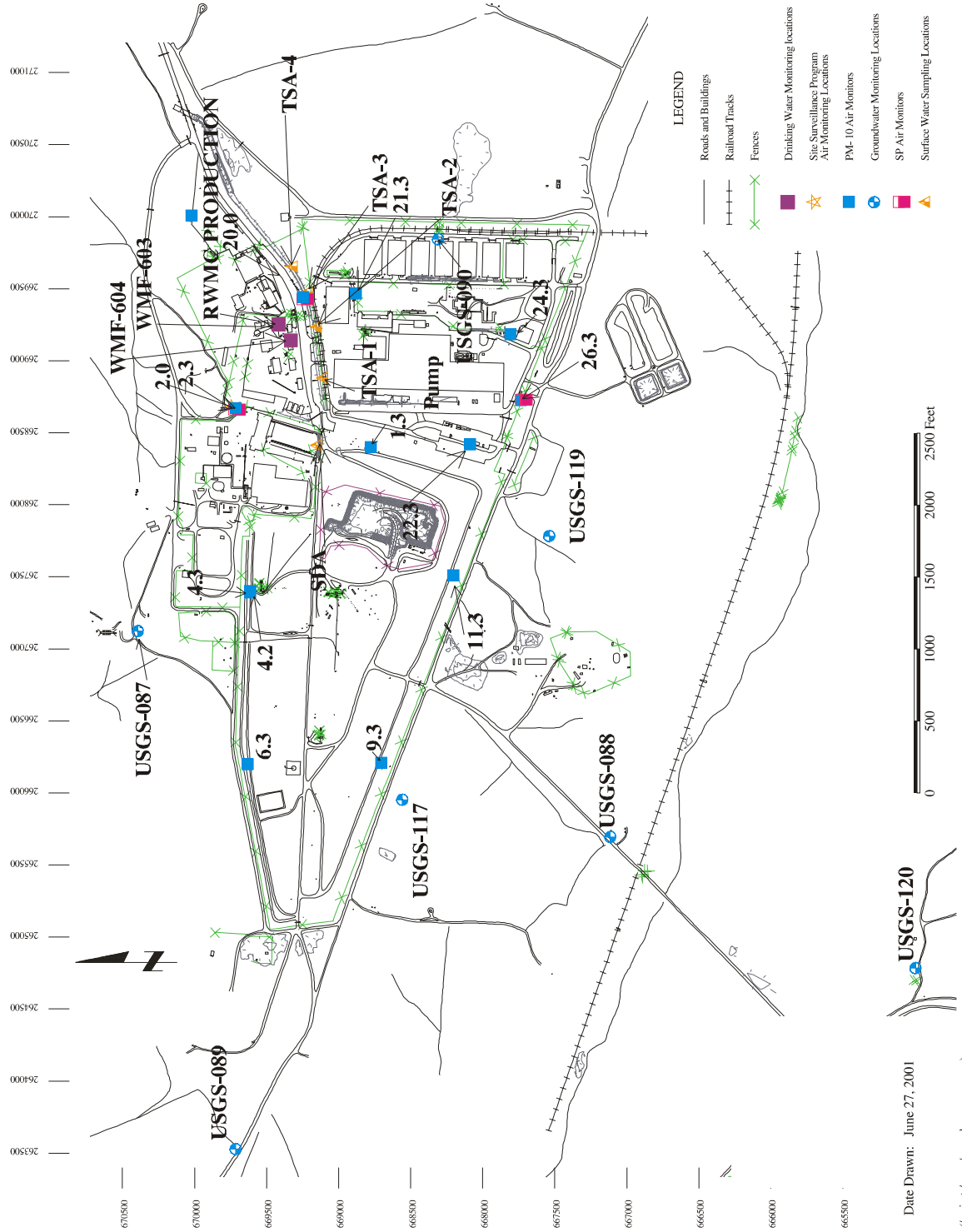


Figure A-12. Radioactive Waste Management Complex monitoring locations.

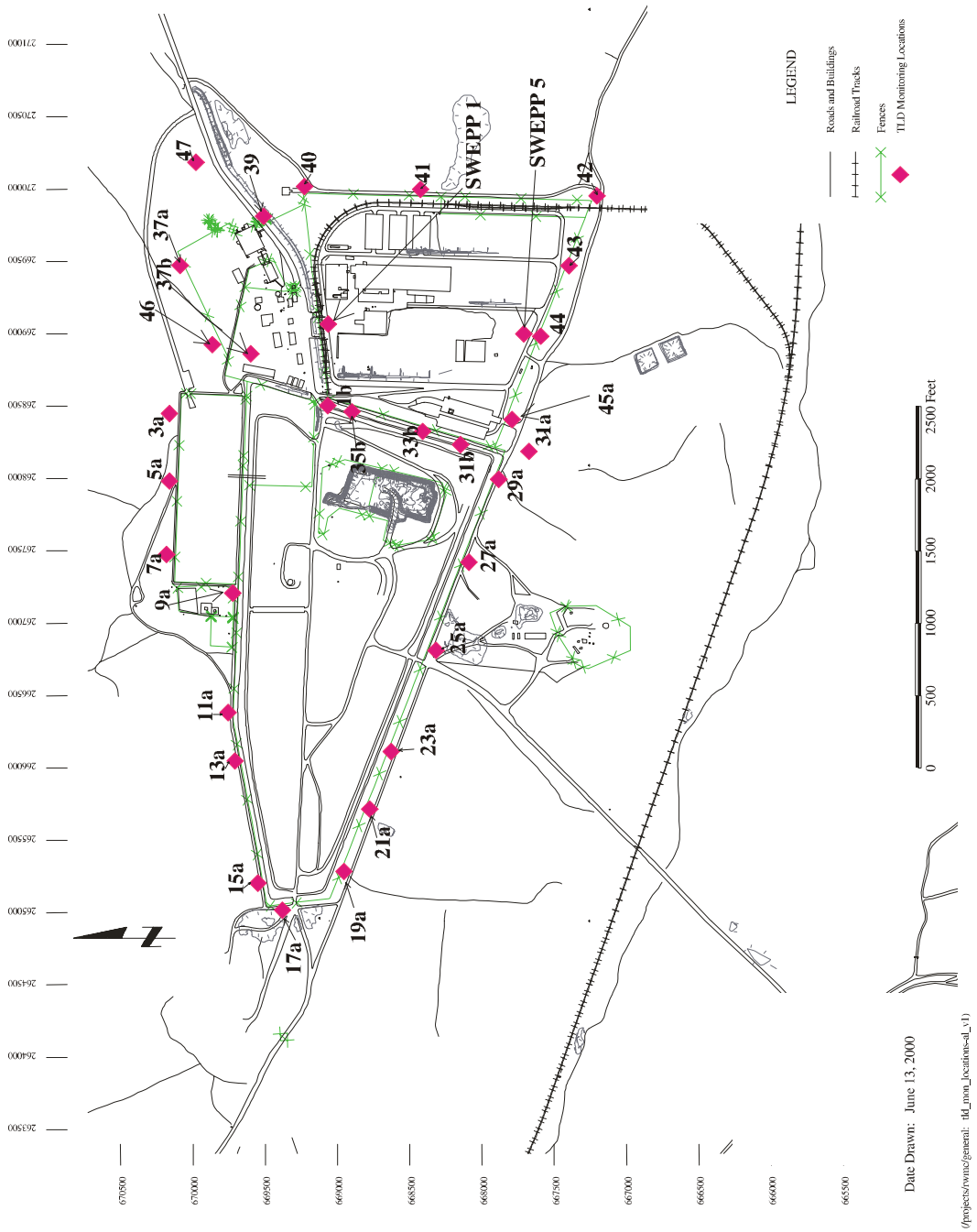


Figure A-13. Radioactive Waste Management Complex thermoluminescent dosimeter monitoring locations.



Figure A-14. Radioactive Waste Management Complex storm water monitoring locations.

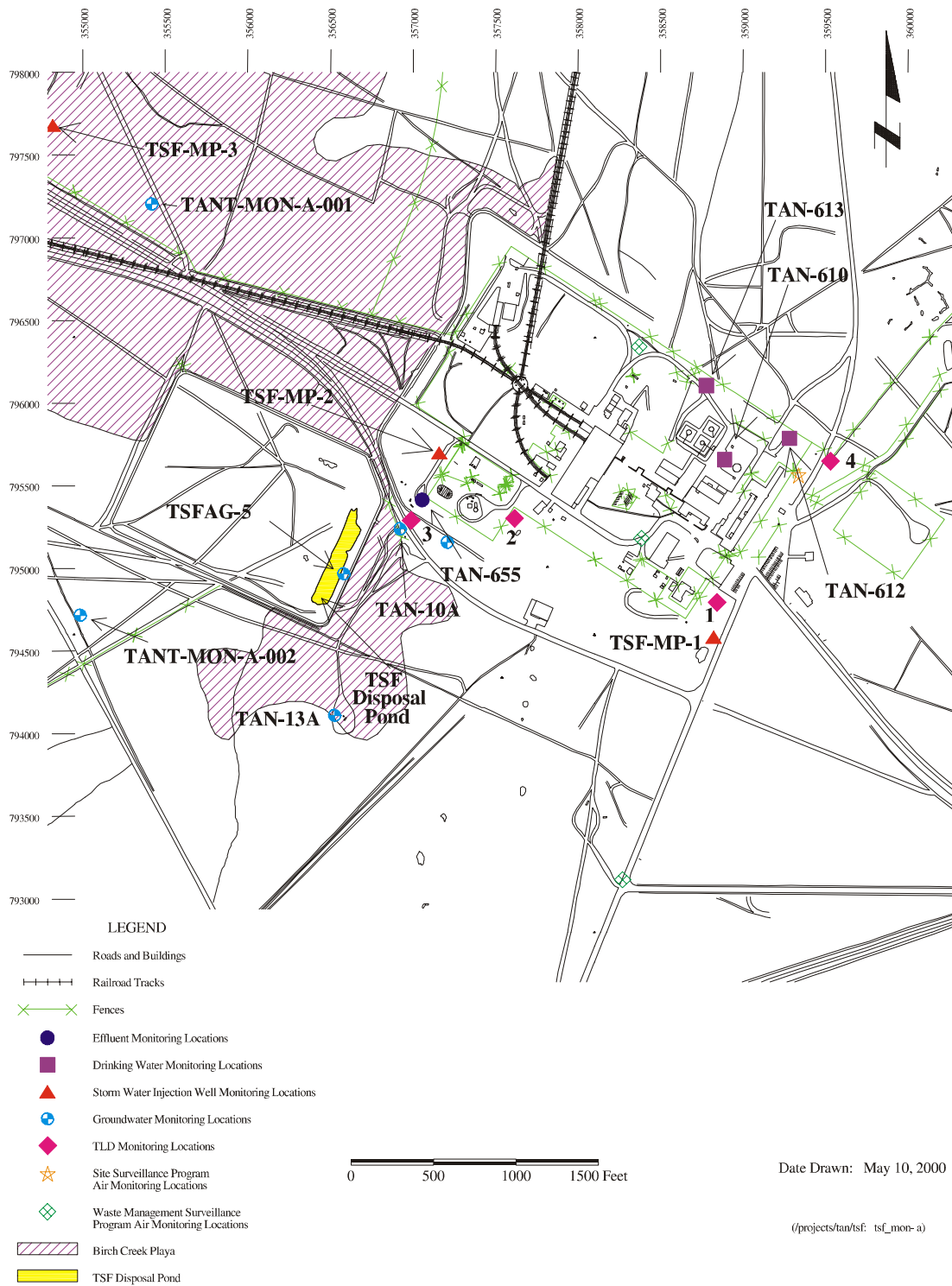


Figure A-15. Test Area North/Technical Support Facility monitoring locations.

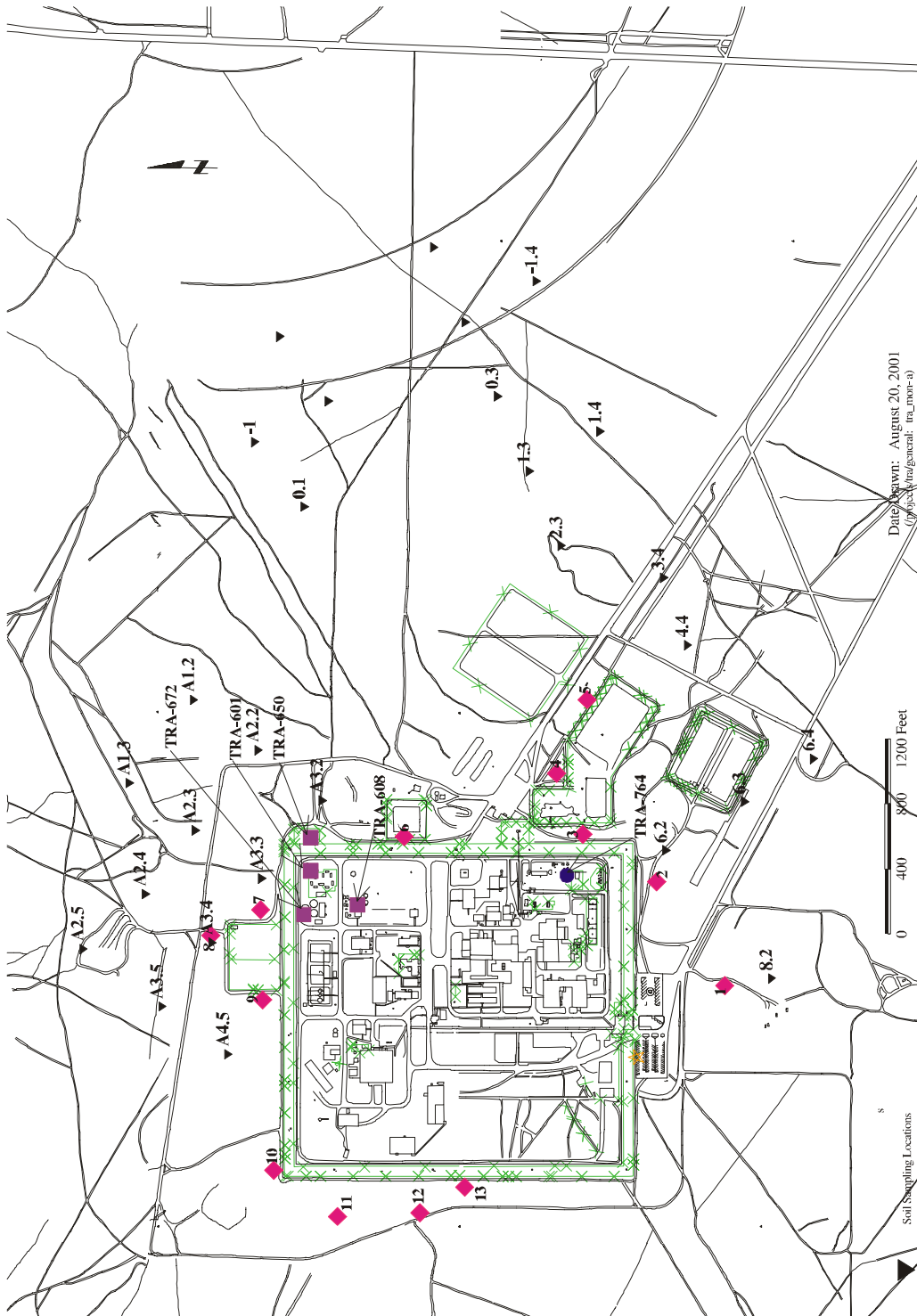
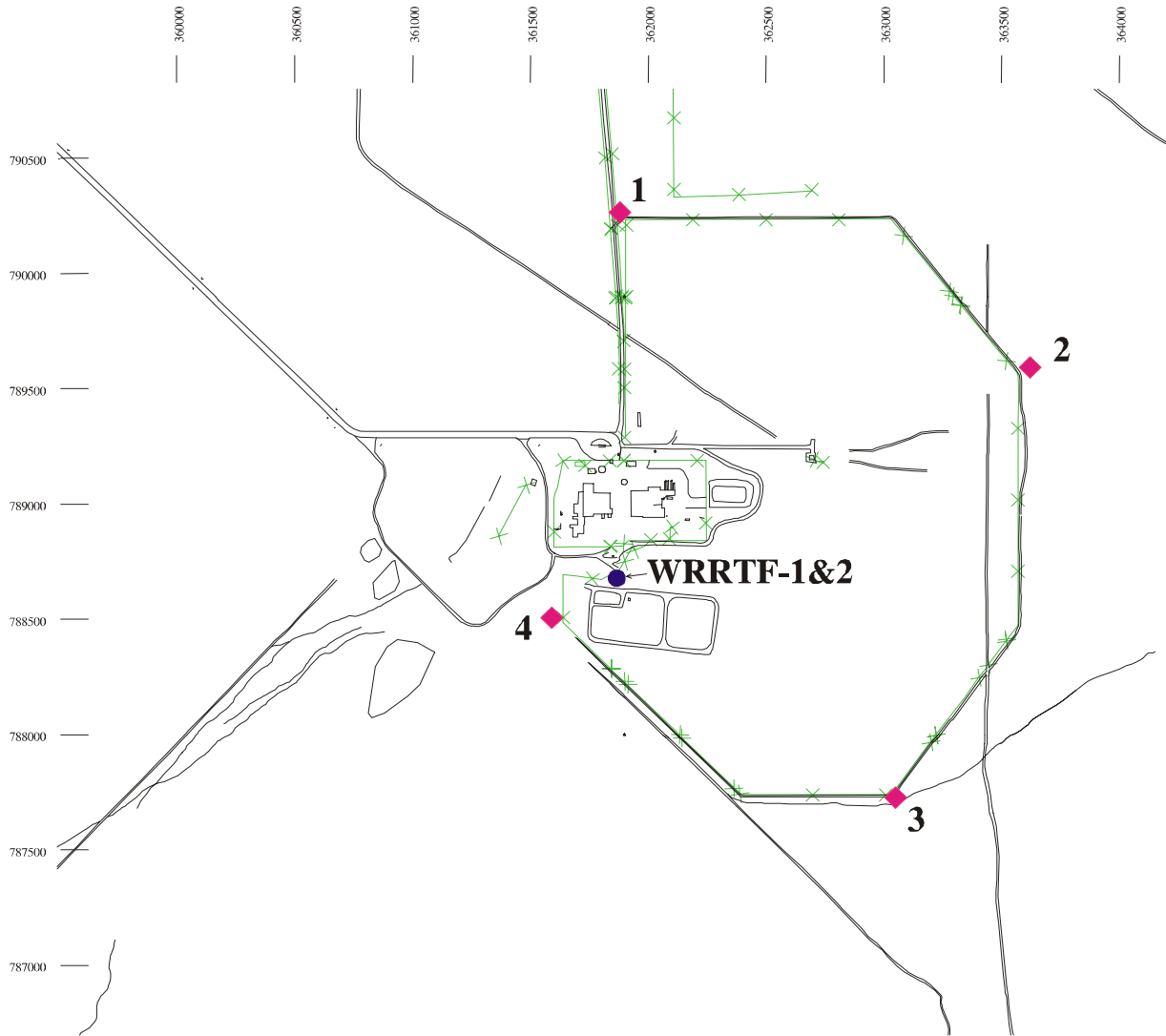


Figure A-16. Test Reactor Area monitoring locations.



LEGEND

- Roads and Buildings
- × Fences
- ◆ TLD Monitoring Locations
- Effluent Monitoring Locations



Date Drawn: June 13, 2000

(/projects/tan/wrrtf: wrtf_mon-a)

Figure A-17. Water Reactor Research Test Facility monitoring locations.

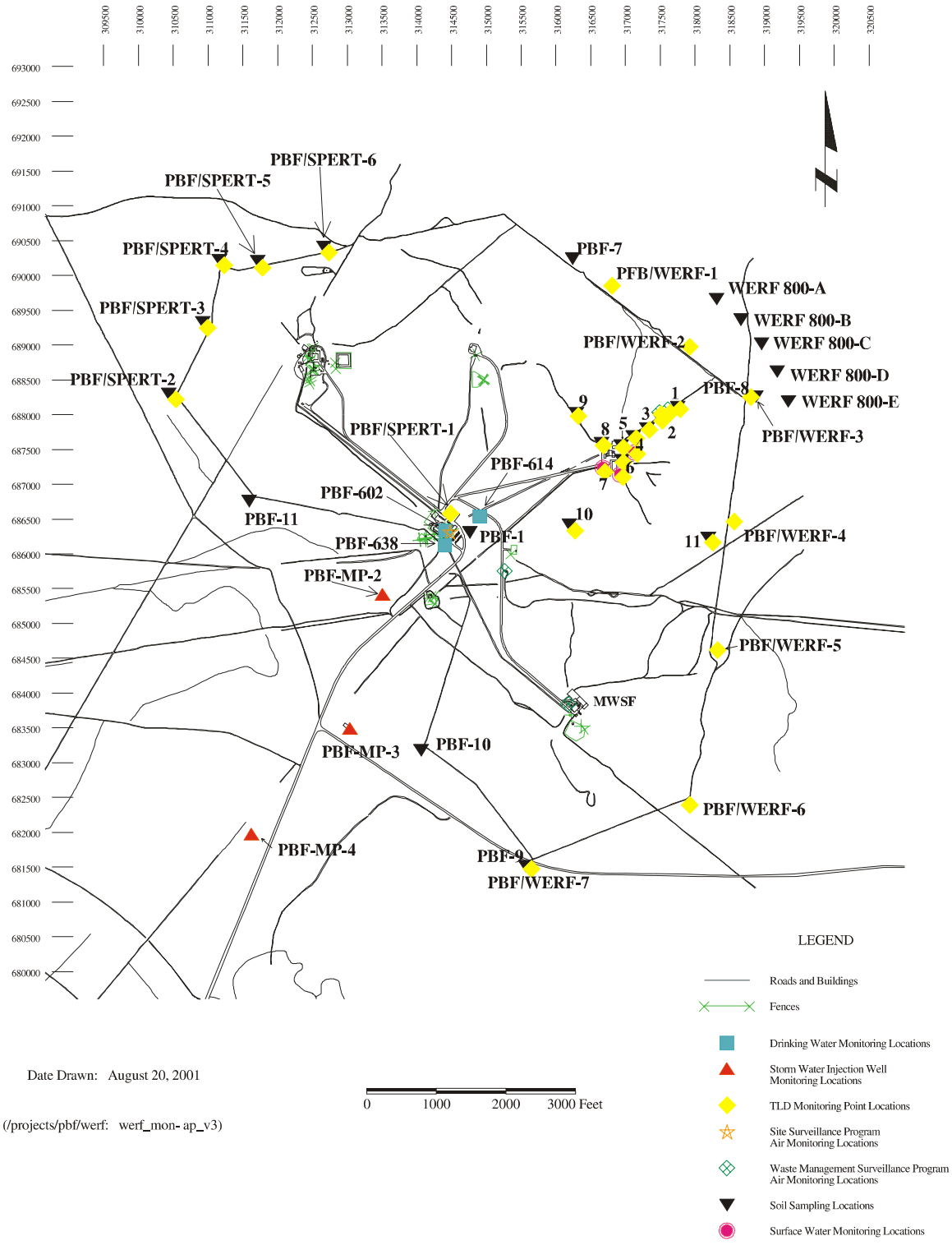
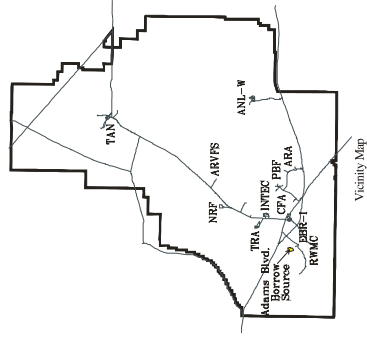


Figure A-18. Waste Experimental Reduction Facility monitoring locations.

Adams Blvd. Gravel Pit

- LEGEND**
- Roads
 - Primary Contours
 - Intermediate Contours
 - Channels Tributary to Big Lost River System
 - Gravel Pit
 - Storm Water Monitoring Locations
- NOTE: Flyover data is at 2-ft. intervals, October 1993.



DATE DRAWN: June 13, 2000
 SCALE: 0 300 600 900 1200 1500 Feet
INTELL SPATIAL ANALYSIS LABORATORY
 PROJECTED: gravel_Pit_adams_bvld_gravelpit_n_2.mxd

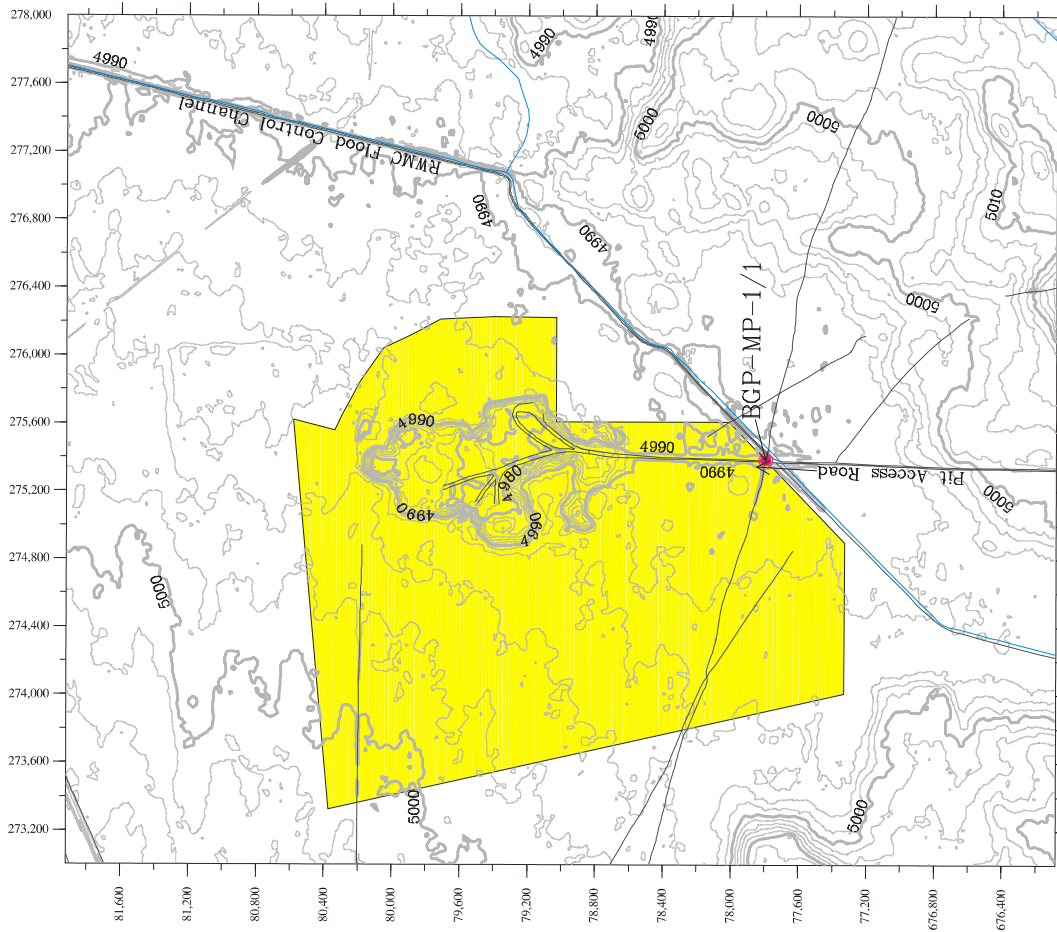
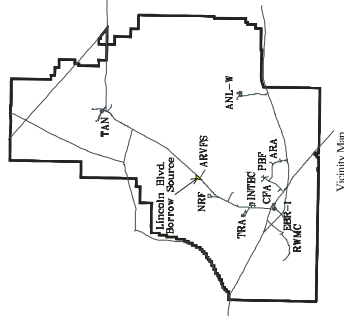


Figure A-19. Adams Boulevard storm water monitoring locations.

Lincoln Blvd. Gravel Pit

- LEGEND**
- Roads
 - Primary Contours
 - Intermediate Contours
 - Big Lost River System
 - Channels/Tributary to Big Lost River System
 - Gravel Pit
 - Storm Water Monitoring Locations

NOTE: Flyover data is at 2-ft. intervals.
October 1993.



Date Drawn: June 13, 2000

INEEL SPATIAL ANALYSIS LABORATORY
 ANALYTICAL TECHNOLOGIES TO MEET ENVIRONMENTAL NEEDS
 (g:\projects\gravel_pit_lincoln_bldg_gravelpit-04_02.dwg)

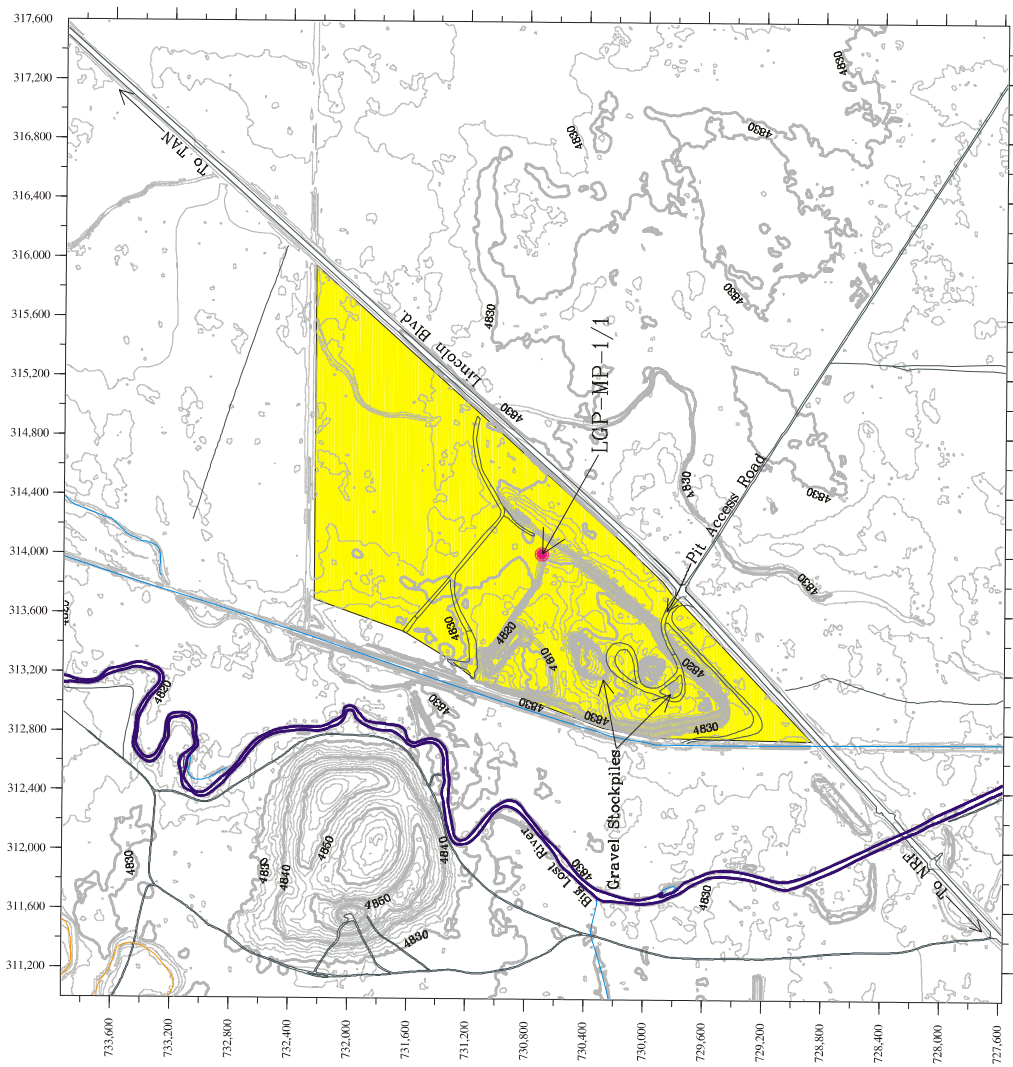


Figure A-20. Lincoln Boulevard Gravel Pit storm water monitoring locations.

Monroe Blvd. Gravel Pit

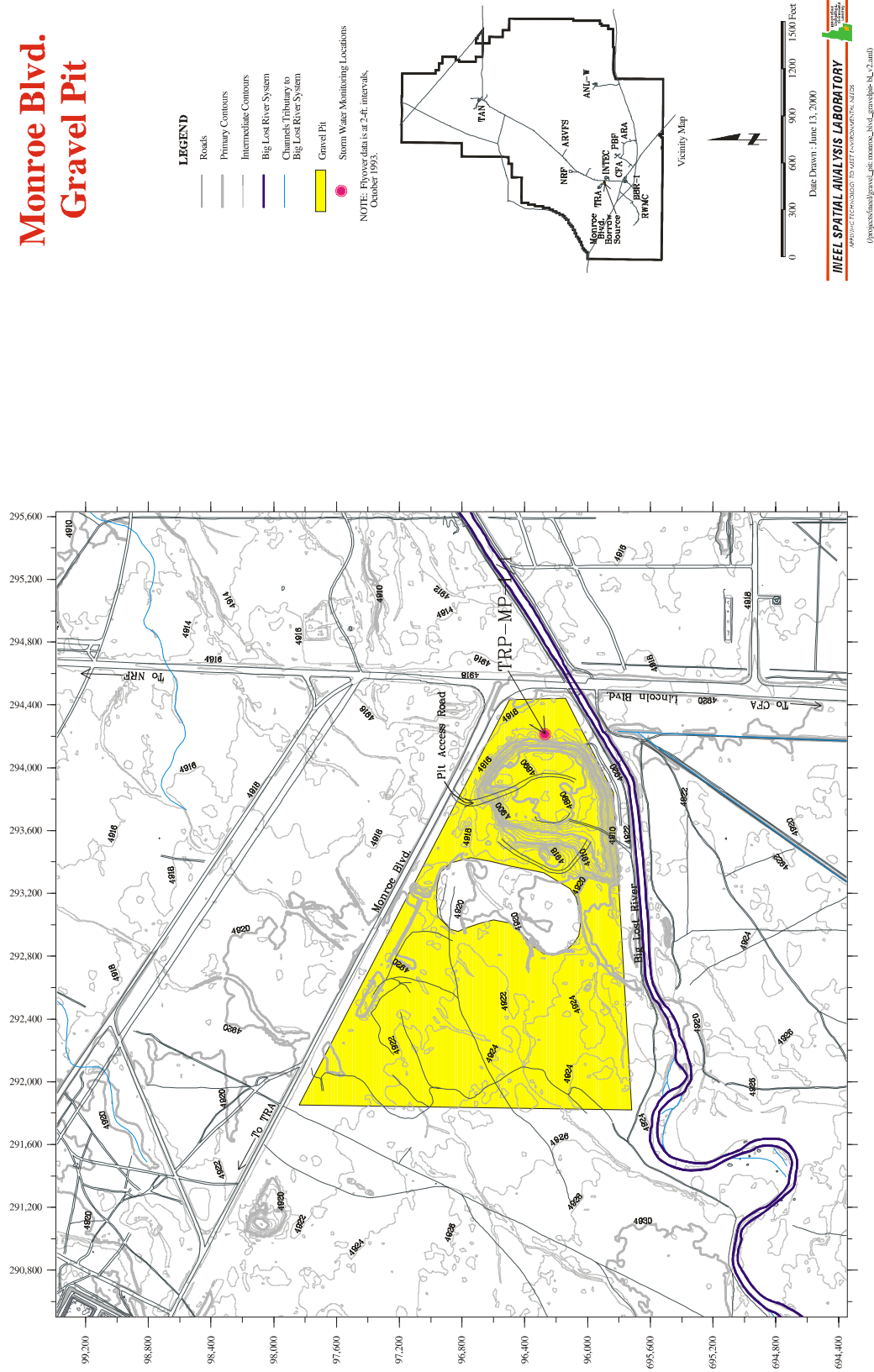
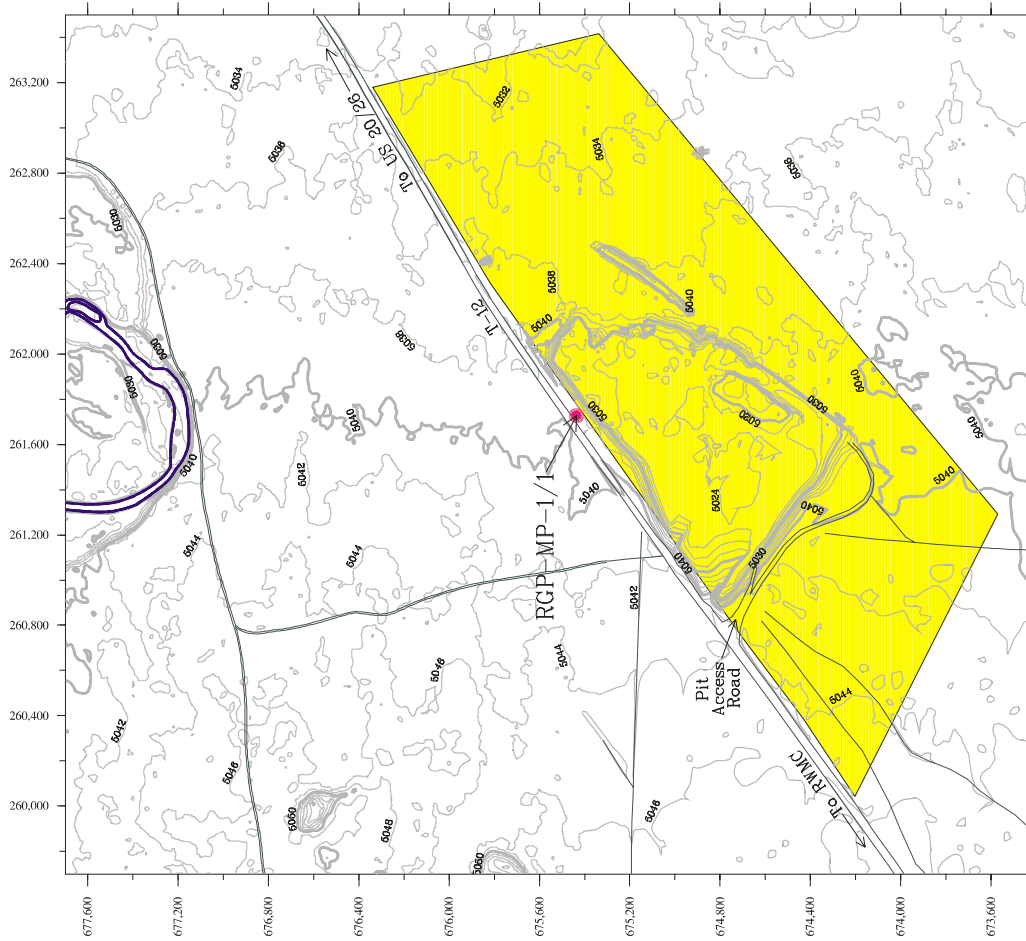


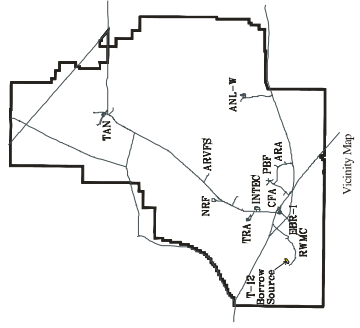
Figure A-21. Monroe Boulevard storm water monitoring locations.

T-12 Gravel Pit



- LEGEND**
- Roads
 - Primary Contours
 - Intermediate Contours
 - Big Lost River System
 - ▨ Gravel Pit
 - Storm Water Monitoring Locations

NOTE: Flyover data is at 2-ft. intervals, October 1993.



Date Drawn: June 13, 2000

INEEL SPATIAL ANALYSIS LABORATORY
AN INSTITUTE OF THE UNIVERSITY OF CALIFORNIA

(Project:\ineel\gravel_pit\17_gravel_pit-bk_v3.mxd)

Figure A-22. T-12 Gravel Pit storm water monitoring locations.

T-28 North Gravel Pit

- LEGEND**
- State Highway
 - INEEL Trails (T-Roads)
 - Contours (20 ft. Intervals)
 - Big Lost River System
 - Big Lost River System Tributary Channels
 - Channels Not Tributary to Big Lost River System
 - Gravel Pit
 - Storm Water Monitoring Locations

NOTE: USGS 1:24,000 scale contour data (1969).

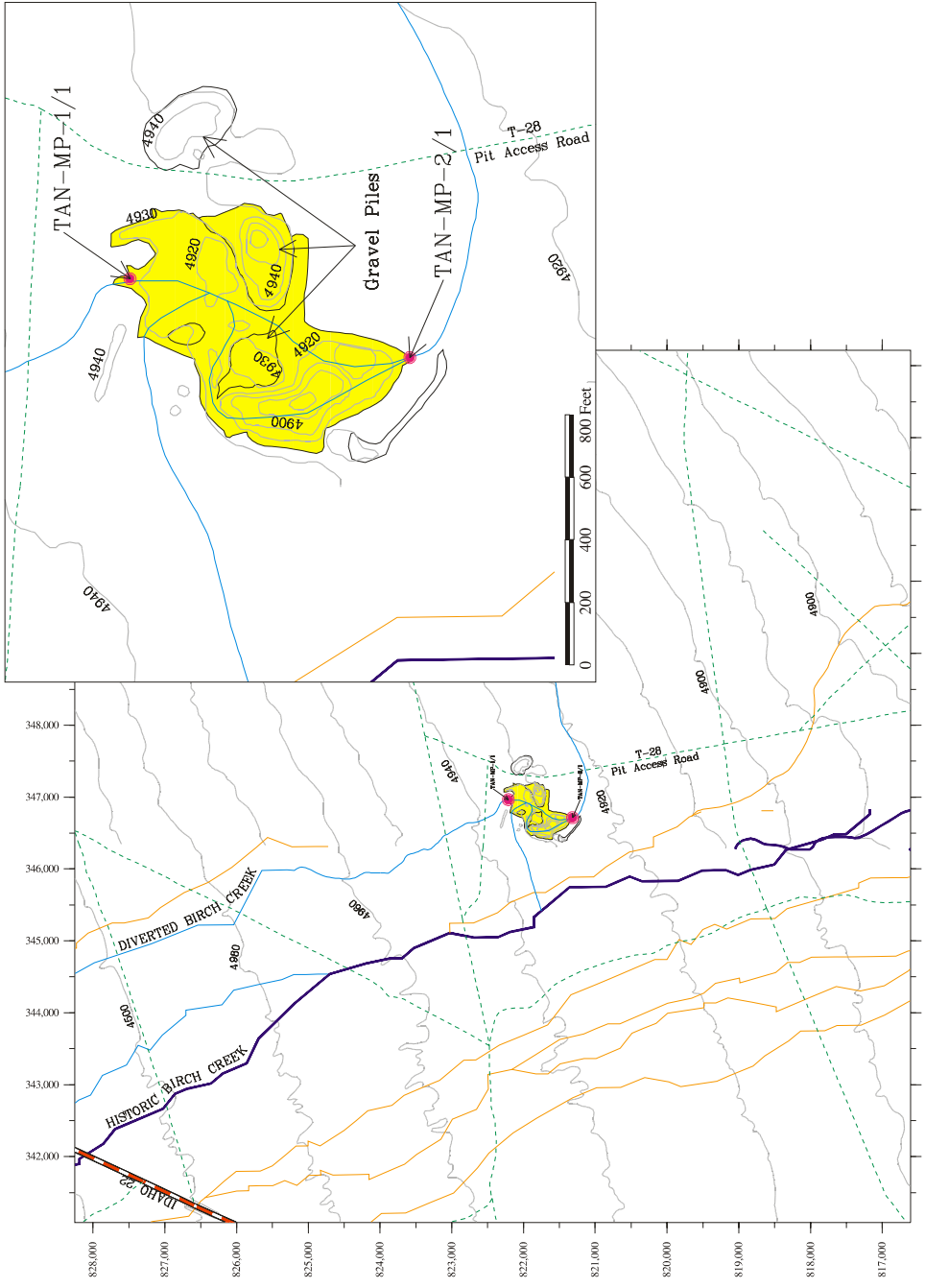
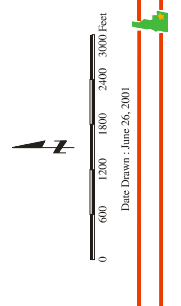
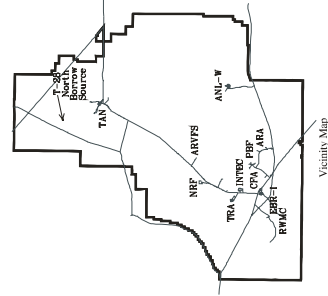


Figure A-23. T-28 North Gravel Pit storm water monitoring locations.

T-28 South Gravel Pit

- LEGEND**
- Roads
 - Primary Contours
 - Intermediate Contours
 - Fences
 - Big Lost River System
 - Channels Not Tributary to Big Lost River System
 - Gravel Pit
 - CERCLA Site
 - Storm Water Monitoring Locations
- NOTE: Flowmeter data is at 2-6 intervals, October 1993.

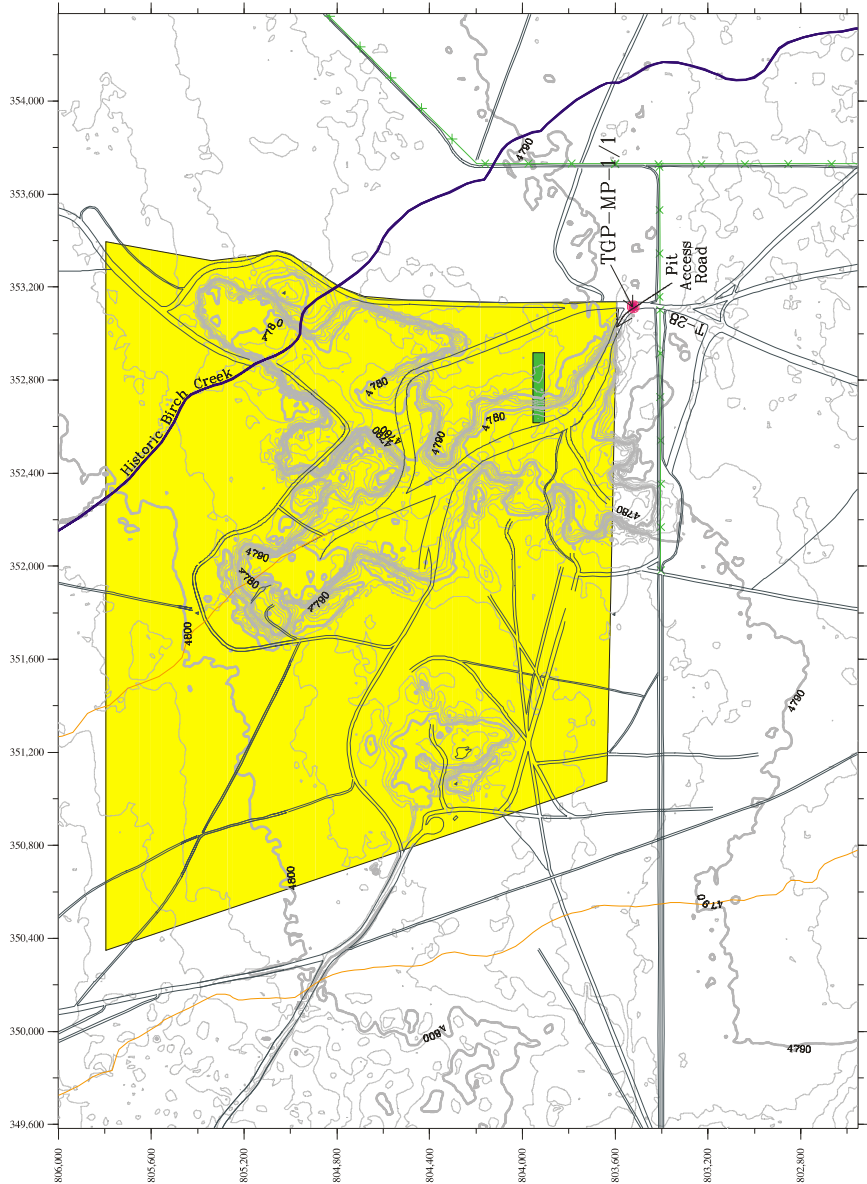
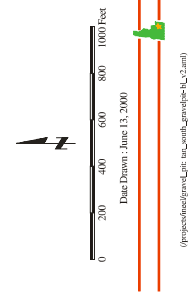
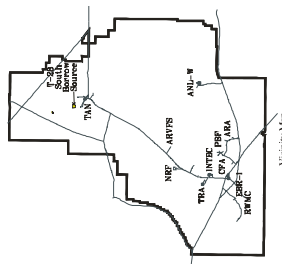


Figure A-24. T-28 South Gravel Pit storm water monitoring locations.

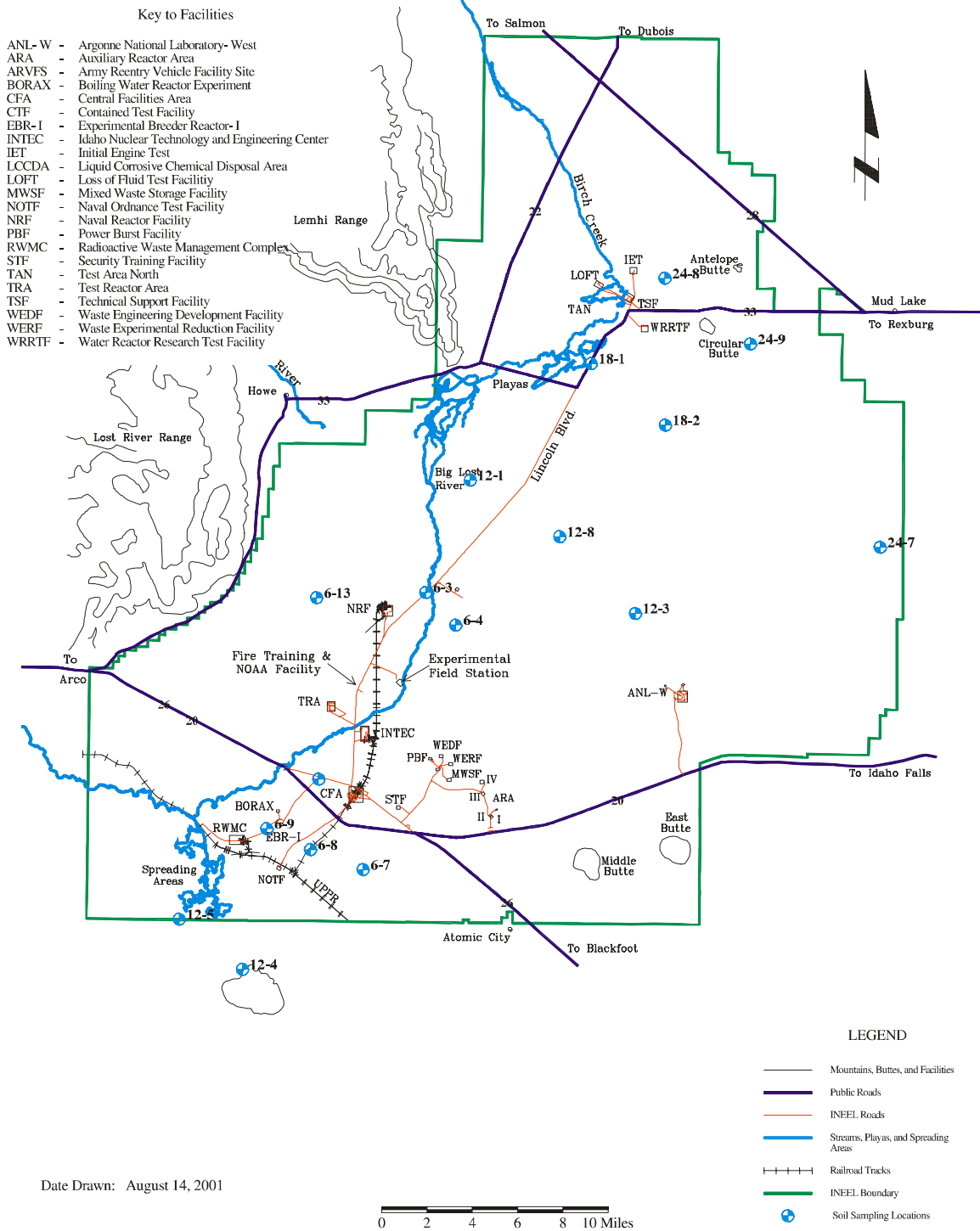


Figure A-25. INEEL soil sampling large grid.

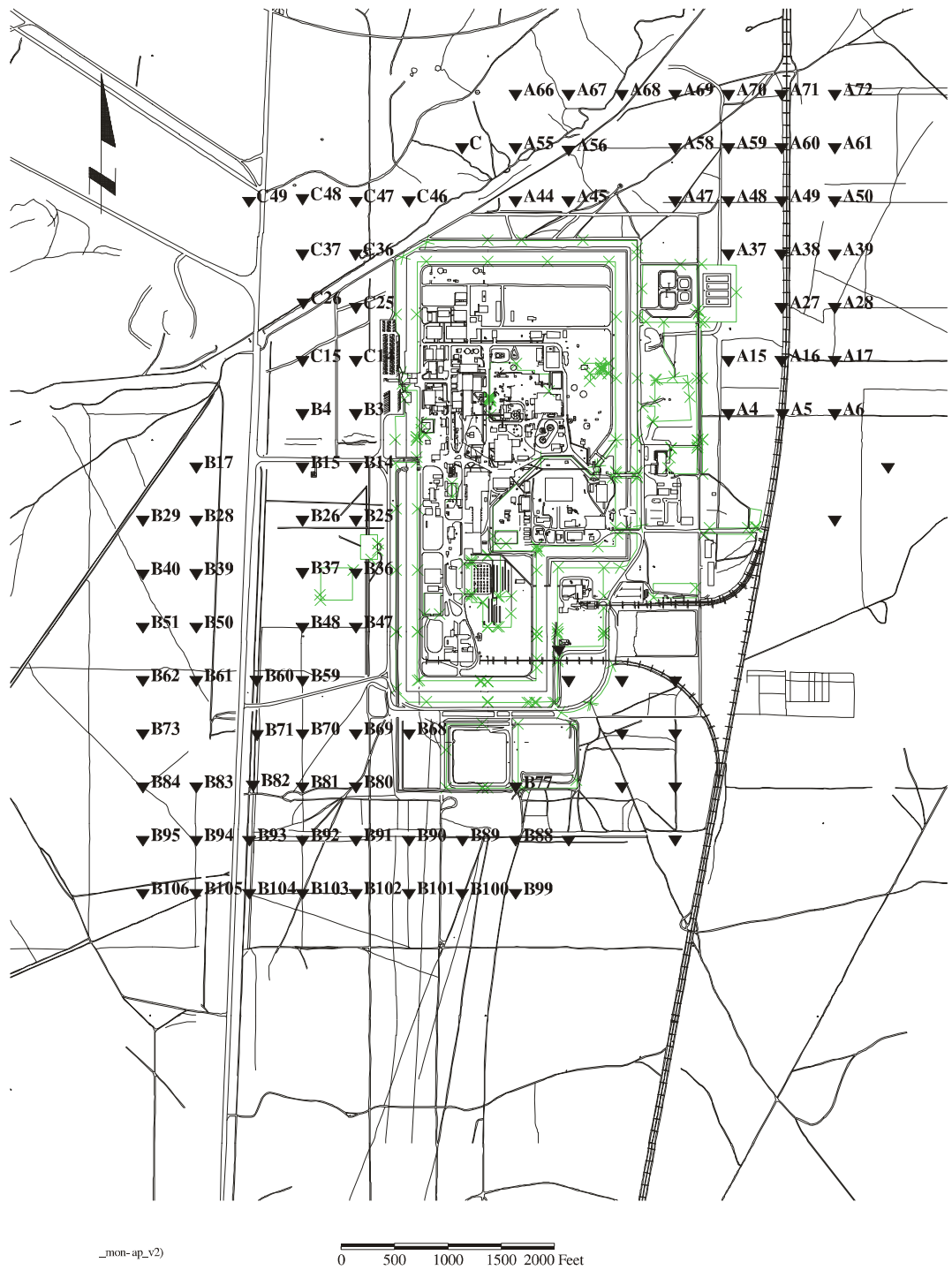


Figure A-26. INTEC soil sampling small grid.

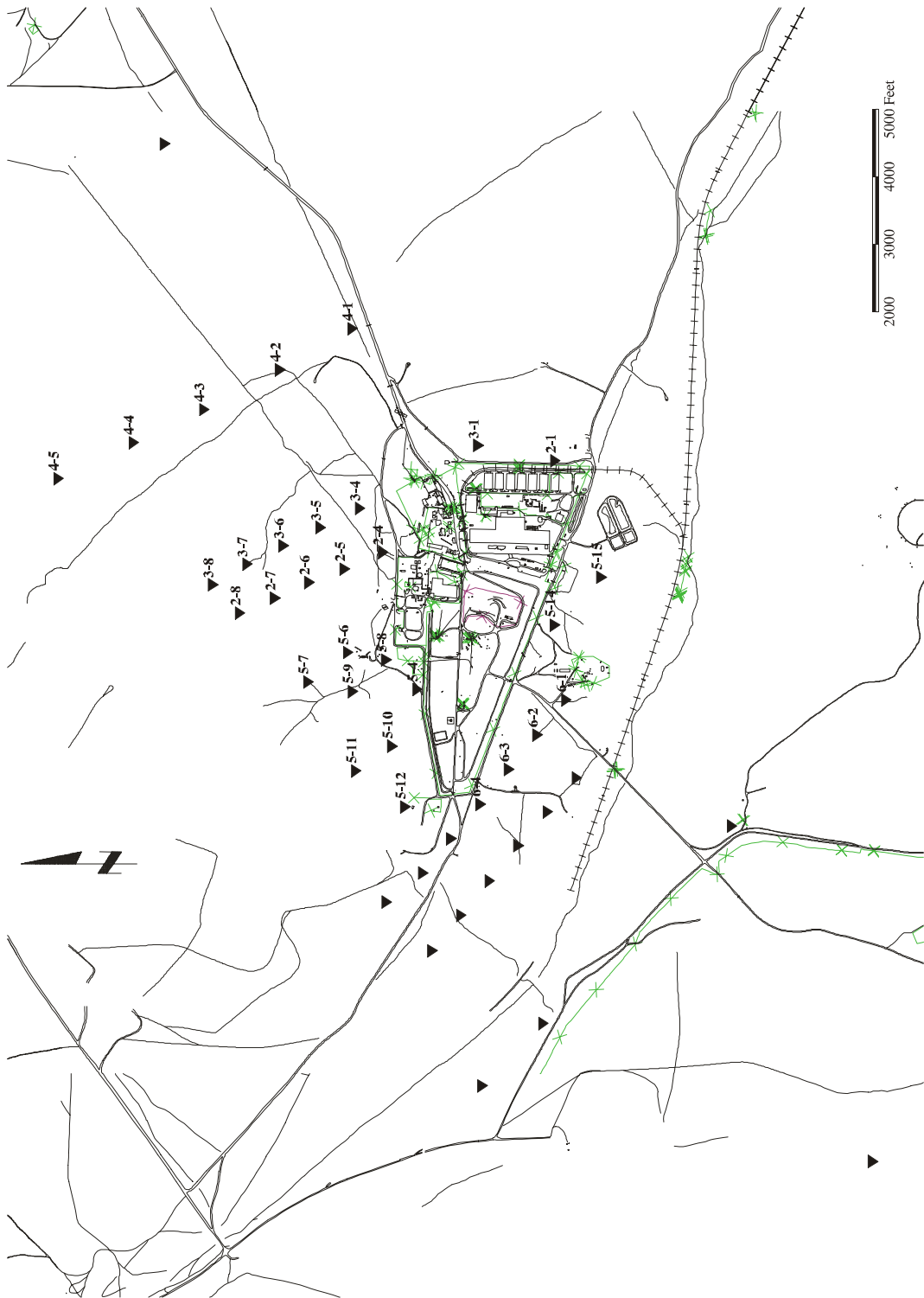


Figure A-27. RWMC soil monitoring locations.

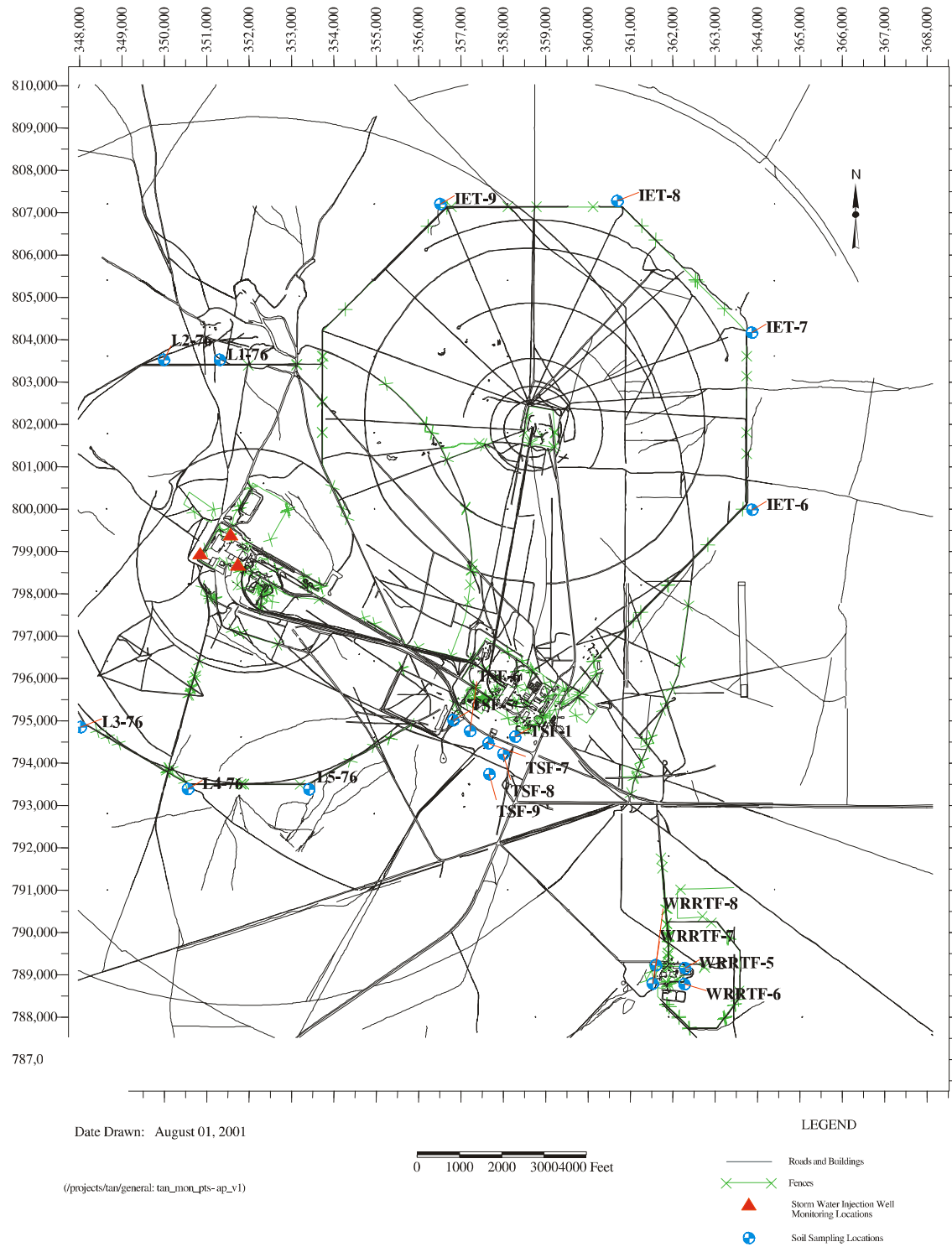


Figure A-28. Test Area North soil sampling locations.

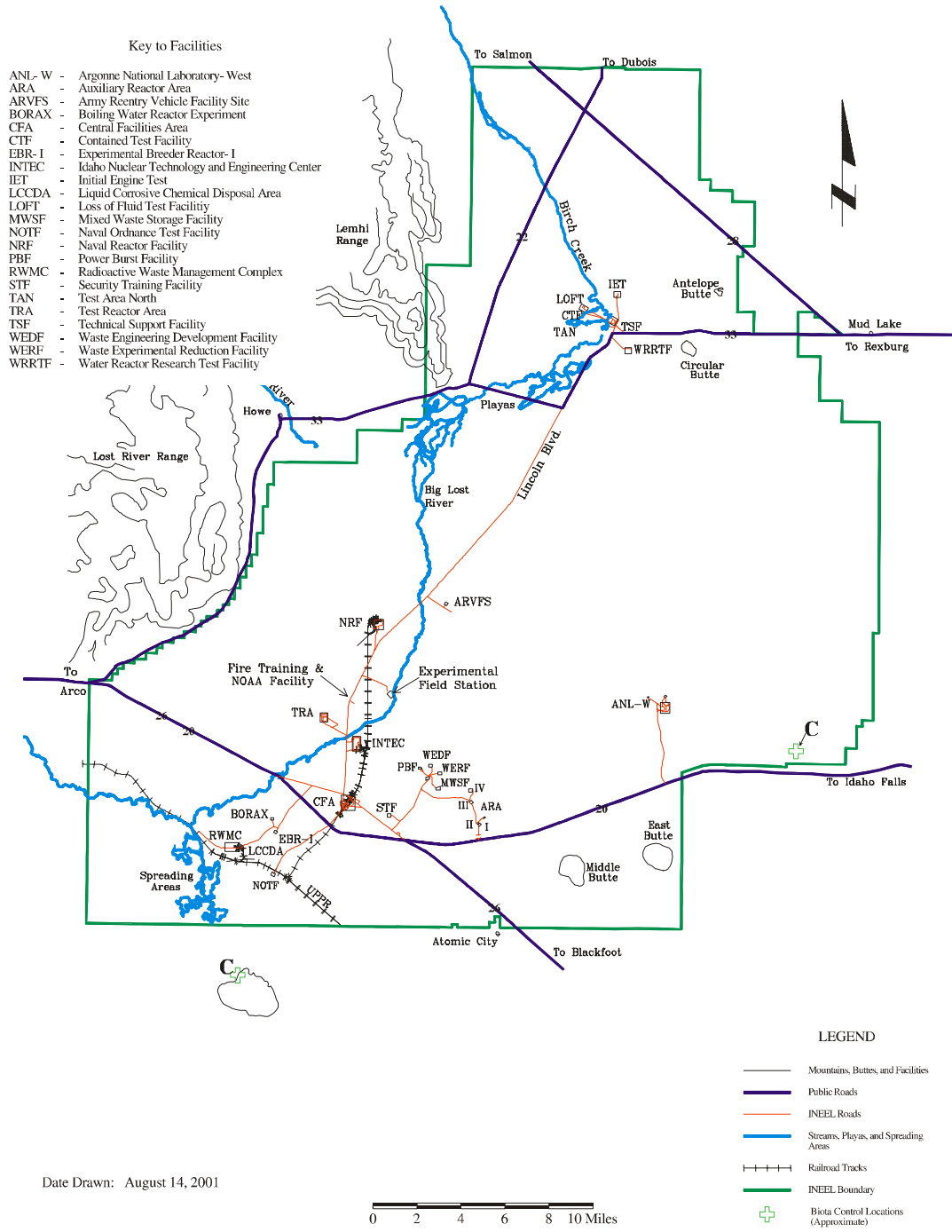


Figure A-29. Biota control locations (RWMC—Frenchman's Cabin, WERF—Tractor Flats).