

Incidence and Mortality Rate Trends

Lymphoma, including Hodgkin's lymphoma and non-Hodgkin's lymphoma (NHL), represents approximately five percent of all cancers in the United States. While Hodgkin's lymphoma is the better-known form of lymphoma, the incidence of Hodgkin's lymphoma is much less than that of NHL. Due to improvements in the treatment of Hodgkin's lymphoma, the mortality rate has significantly decreased over the past 25 years. However the incidence and mortality rates for NHL have increased, with the incidence rate nearly doubling, since the early 1970s, then stabilizing in the last five years. For both forms of lymphoma, incidence and mortality rates have been higher for Whites than African Americans and other ethnic groups.

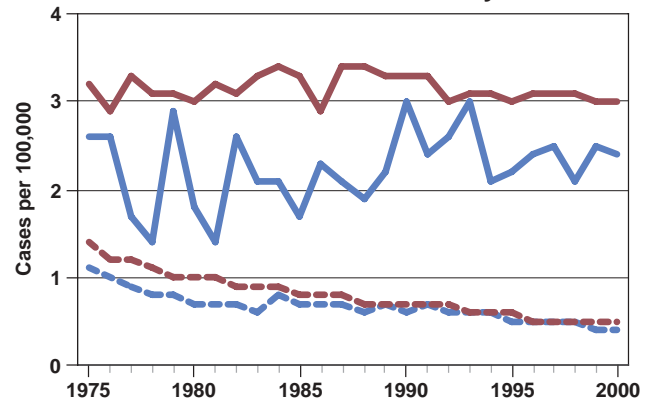
It is estimated that approximately \$3 billion* is spent in the United States each year on treatment for lymphoma.

*In 1996 dollars, as determined by Brown, Riley, Schussler, and Etzioni and reported in the National Cancer Institute's *Cancer Progress Report - 2003 Update* at: <http://progressreport.cancer.gov>

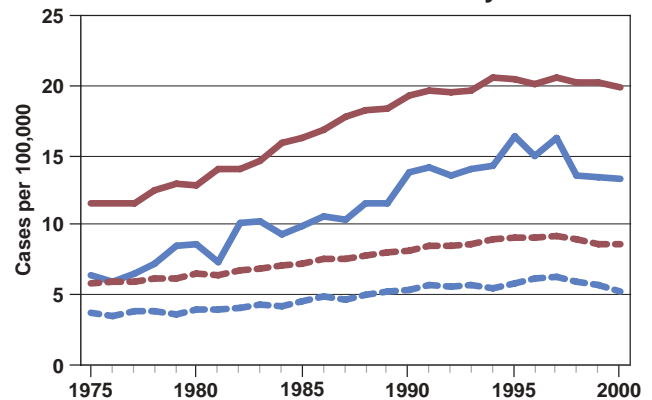
Source for incidence and mortality data: Surveillance, Epidemiology, and End Results (SEER) Program and the National Center for Health Statistics. Additional statistics and charts are available at:

http://seer.cancer.gov/faststats/html/inc_hodg.html
http://seer.cancer.gov/faststats/html/mor_hodg.html
http://seer.cancer.gov/faststats/html/inc_nhl.html
http://seer.cancer.gov/faststats/html/mor_nhl.html

U.S. Hodgkin's Lymphoma Incidence and Mortality



U.S. Non-Hodgkin's Lymphoma Incidence and Mortality



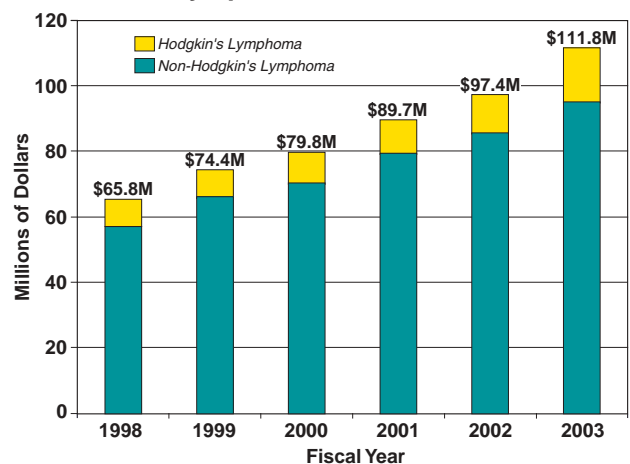
— White Incidence — African American Incidence
 - - - White Mortality - - - African American Mortality

Trends in NCI Funding for Lymphoma Research

The National Cancer Institute's (NCI's) investment in lymphoma research has increased from \$65.8 million in fiscal year 1998 to \$111.8 million in fiscal year 2003.

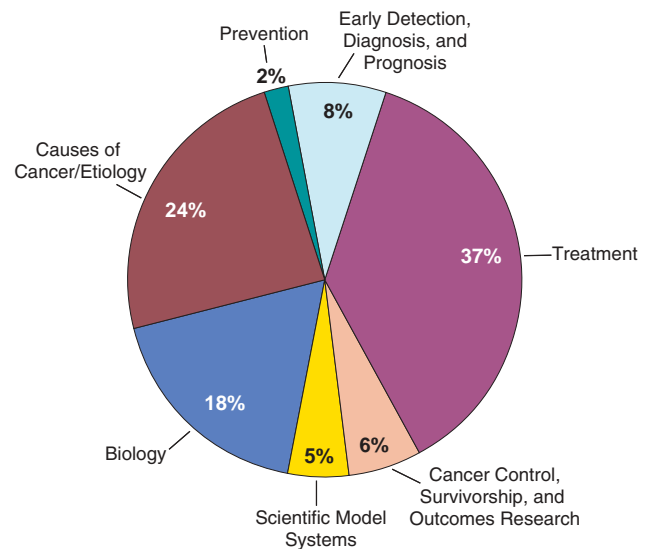
Source: NCI Financial Management Branch
<http://www3.cancer.gov/admin/fmb>

NCI Lymphoma Research Investment



NCI Lymphoma Research Portfolio

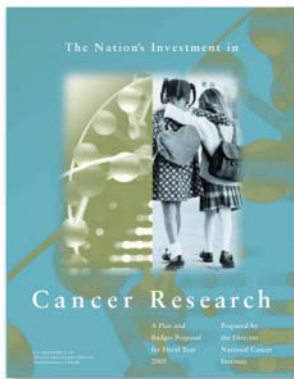
The pie chart shows the distribution of NCI lymphoma research dollars by scientific area for fiscal year 2002. Such portfolio analyses along with the recommendations of the Progress Review Groups (PRGs) are used to (1) identify research gaps, (2) develop strategic plans that will address future research needs, and (3) track and assess progress.



NCI Lymphoma Research Portfolio*
Percentage of Total Dollars by Scientific Area
Fiscal Year 2002

*A description of the relevant research projects can be found at the NCI Cancer Research Portfolio website at <http://researchportfolio.cancer.gov>.

Examples of NCI Research Initiatives Relevant to Lymphoma



- Two lymphoma-specific **Specialized Programs of Research Excellence (SPOREs)** are moving results from the laboratory to the clinical setting. <http://spores.nci.nih.gov/lymphoma/lymphoma.html>
- The **Leukemia, Lymphoma, and Myeloma (LLM) PRG**, a panel of prominent scientists and patient advocates, assessed the state of the science and identified future research priorities. <http://prg.cancer.gov>
- The **Academic-Public-Private-Partnership Program (AP4)**, a new initiative that is the direct result of PRG recommendations, will support the discovery of new therapeutic agents for orphan cancers, including hematologic cancers, and their rapid translation to human trials. <http://grants1.nih.gov/grants/guide/rfa-files/RFA-CA-04-005.html>
- The **Interlymph Consortium** will share data and biological samples to enhance the ability of investigators to analyze gene-environment interactions and the study of various lymphoma subtypes.
- The **Mouse Models of Human Cancers Consortium** has developed six models available to the community to study hematologic malignancies. http://emice.nci.nih.gov/mouse_models/organ_models/hema_models
- The **Cancer Trials Support Unit (CTSU)** supports a national network of physicians and patients participating in Phase III clinical trials to treat several adult cancers including lymphoma. <http://www.ctsu.org>
- NCI's **Quick Trials for Novel Cancer Therapies** program speeds the translation of ideas developed in the laboratory into early-stage clinical studies. Sixteen projects focus on hematologic malignancies. <http://grants.nih.gov/grants/guide/pa-files/PA-00-047.html>
- The **Lymphoma and Hodgkin's Disease Home Pages** direct visitors to up-to-date information on lymphoma treatment, prevention, genetics, causes, screening, testing, and other topics. <http://cancer.gov/cancerinfo/types/non-hodgkins-lymphoma> and <http://cancer.gov/cancerinfo/types/hodgkinslymphoma>