

Instruction Manual

for the

Community Development Benchmark Management System

**June 2000
Version 4**

**USDA Rural Development
Office of Community Development**

Benchmark Quick Reference Guide

Using the Benchmark Management System

- **Do I need any specific software to use the Benchmark Management System?** No, the information is stored in a database in Washington D.C. and you can access it through the internet. You can access your community's benchmarks with any computer that has a connection to the internet. If your computer is older and slower it may take more time to navigate through the Benchmark Management System, but it will still work. (Page 3)
- **Is there a way to practice entering a benchmark before I start with my community's password?** Yes, on page 4 of this manual, there is a training password and user name that will let you practice entering benchmarks. OCD strongly encourages communities to practice using the training system. (Page 4)
- **Are there Help Screens in the Benchmark Management System?** Yes, when you are on the main screen entering a benchmark move your cursor to one of the underlined words on the left such as "Goal" or "Target" and click on it with the left button of your mouse. A help screen window will pop up explaining the type of information requested for this field. (Page 6)
- **What time frame should we have in mind when writing benchmarks?** The benchmarks are a living document for your community, to see where it has been and where it intends to go. Generally your benchmarks should encompass the projects from your strategic plan for the next two years. Some benchmarks will be projects that progress over the full ten years of the designation in which case the progress will be documented in the Benchmark Management System. (Pages 6-8)
- **Can I log on to the Benchmark Management System website and stay logged on all day?** No, if you are not actively using the system it will automatically kick you out after 15 minutes and you will have to log in again. All of the changes you made will be saved in the system up until you were kicked out. As long as you are entering or updating information in your benchmarks you will not be kicked out of the system. (Pages 4-6,10)
- **If I have my cursor on one of the links in the Benchmark Management System and I continue to click on the button on my mouse will it make the Benchmark Management System connect faster?** No, in fact it will take longer and if you are in the process of creating a new benchmark it will oftentimes confuse the automatic numbering system. This will cause the system to skip numbers and your benchmarks will be out of sequence or have gaps. Be patient and click on a link once until the Benchmark Management System responds. (Page 3)
- **If someone else in the community wants to view our benchmarks can we give them our password and user name?** No, if someone has your password they can access your benchmarks in the system and change or delete your benchmarks. For security reasons only one or two people should have access to your community's password. If someone wants to view the benchmarks, the community can either print out a "Detailed Report" for them or provide them with the training password and training user name on page 4 of this manual. The training password enables a person to view all the benchmarks, but not change the information. (Pages 3-4)
- **If I update some information in one of my benchmarks and the changes I made do not immediately appear on my screen what should I do?** Click on the right button on your mouse and the word "Refresh" (Microsoft Explorer) or "Reload" (Netscape) will be one of the options that appears. If you select Refresh or Reload and click on it with the left button on your mouse the Benchmark Management System will pull the most current information from the database in Washington, DC and present it on your screen.

- **Is there a way to prepare information using a word processing program and then cut and paste it into the benchmark management system.** Yes, you can cut and paste information by clicking your right mouse button and using the "copy" option to copy the text you want to place in the Benchmark Management System and then log in to the Benchmark Management System and click on the right button on your mouse and selecting the "paste" option. For other methods and shortcuts, refer to your word processing software manual.
- **Can we create reports from the benchmarks of other communities?** Yes, you can create detailed reports or general overview reports by selecting the different fields on the "Create a New Report" link. These can be reports on your own community's benchmarks or other EZ/EC and Champion communities. (Pages 23-31)
- **Who is the person I call in OCD if I have a question about using the Benchmark Management System?** Your Desk Officer is your point of reference for the Benchmark Management System. They have been trained by OCD to provide technical assistance on using the system. (Page 2)
- **What are the two annual reports required of each Community?**
The On-line Annual Narrative Report due each February and the On-line Annual Benchmark Report due each August. The Annual Narrative Report asks the community to respond to eight questions pertaining to overall accomplishments, partnerships formed, obstacles, solutions and best practices over the previous year. The Rural Development State Office will review this report and then it will be reviewed by OCD. The Annual Benchmark Report is a Detailed Report from the Benchmark Management System to review the progress and documentation of each community's benchmarks. Those communities that keep the information in their online benchmarks current each month will already have a complete report. (Pages 5, 17, 19, 23)

Updating Benchmarks in the System

- **Who should be responsible for updating the information in the online Benchmark Management System?** Each community needs to identify one person who will be responsible for updating the information in the system each month. It is best to have one person responsible for actually entering the data, if there is more than one the responsibility for updating the information becomes clouded and the entries become less systematic. However, it is the responsibility of board members to ensure that the person responsible for updating the benchmark information is provided with the data they need. One person can't be expected to track down all the information and also enter it into the system. (Page 17)
- **How often should we be updating the information about our community in the Benchmark Management System?** Financial figures and project status such as output to date, completion of tasks should be updated monthly. The on-line benchmarks should be thought of as a living document that is distributed at each board meeting and on a regular basis to the community to let them know what progress has been made since the designation. The Benchmark reports can serve as a valuable public relations tool if you keep the information contained in the benchmarks current. (Page 17, 23)
- **Can I create a report of the total funding that has been received by my community?** Yes, if you select "Create a New Report" and then select "Partners and Resources", the Benchmark Management System will create a report of the total "Funds Requested" and "Funds Received" broken down into several categories including Federal Agencies, State Government, Local and Regional government, Private Sector, and Non Profit. (Pages 23, 27-28)
- **Can a Community Delete a Benchmark?** No. The benchmarks are a running list of what the community has worked on and will work on in the future. As stated before it is a living document, if the community votes to not implement one of its benchmarks it can mark it as "Inactive" and in the Notes section list the reason why the benchmark will no longer be pursued. (Page 6)

- **How many Benchmarks should we have? And how many tasks under each Benchmark?** The number of benchmarks can vary between communities depending on their preference. Some communities choose to create benchmark goals that are very specific such as "Purchase new playground equipment for the Hatterfield Elementary School and Birchwood Park to make them safer." Others choose to have Benchmarks that cover a wider scope of activity "Improve the level of community safety by upgrading the crime prevention capabilities of the EC area." The tasks listed will then identify specific projects under this benchmark such as establishing a community watch program, purchasing two new police cars, creating a 911 emergency response system, etc. The key to properly creating benchmarks is not in having the right amount, but rather ensuring that they properly cover the scope of activities taking place within the designated area. Every community should be creating benchmarks that are focused, feasible and measurable. See the training benchmarks in Appendix B. (Pages 6-12)

Documenting Funding

- **If my community wants to enter funds we received from our designation (Round I or Round II) for a project we are working on how should it be entered in the funding section of the Benchmark Management System.** Page 14 of this manual explains this in detail. Note the difference for which agency should be listed as the funder: if you are a Round I community the Agency *Department of Health and Human Services*, if you are a Round II community it is *USDA Rural Development*. (Pages 13-15)
- **Should we make entries for funding we are considering applying for or only for those funds we have actually applied for?** List only those funds in which an actual request for funds has been made; do not enter potential funding sources. Set up a process within your community such as the day the application is submitted, you enter the data into the Benchmark Management System. (Pages 14)
- **After we have received funding we applied for how should we update our funding section in the benchmark?** Enter the amount you received under the "Funds Received" column and leave the original amount applied for under the "Funds Requested" column. If you received less than you requested do not change the amount requested to match the amount received. Also, do not enter a zero in the amount requested after you enter the amount of funds received. (Pages 14-15)
- **If we receive both a grant and a loan for a project under one of our benchmarks, for example a \$10,000 Community Facilities loan and a \$5,000 Community Facilities grant from USDA Rural Development for the purchase of a police car do we have to enter each of these separately.** Yes, the loan and grant need to be entered on separate lines and under the field labeled "program" you need to list what the funds are for. Example, "Community Facilities grant for the purchase of a police car in town of Bloomington." See the training benchmark on housing in the Appendix B for more examples. (Pages 13-15)
- **Should I enter a zero in the "Funds Requested" column when I receive requested funds?** No. When applying for funding enter the amount of funding that has been applied for under the "funds requested" column and a zero in the "funds received" column until funding is received. Then if the funds are granted, change the zero in the funds received column to the amount of funding that has been awarded. If the amount awarded is less than the amount requested **do not** change the amount requested to the amount awarded. Those reviewing the benchmarks will assume the community will seek other funds to cover the difference. Do not enter a zero in the funds requested column once funds have been received despite what earlier versions of the training manual may have implied. (Pages 13-15)

Units of Measurement/Secondary Outputs

- **Why is it important to add secondary outputs?** When communities create a benchmark they choose a primary unit of measurement that monitors the progress on a project. A community's benchmark might be to establish a youth center for at risk youth and the primary unit of measurement selected might be "# of youth centers". While this indicator will tell us when the youth center has been created it will not tell us how many children are using the center or how many jobs the youth center created in the community. By adding secondary outputs such as "# of youth participating" and "# of jobs created" we are better able to grasp the aggregate benefits to the community from the implementation of this benchmark. A community can add as many secondary outputs as it wishes. (Pages 8-9, 15-16)
- **If there is a unit of measurement that I want to use in my community, but it does not exist in the Benchmark Management System can it be created?** Yes, email your desk Officer at OCD with your request and one will be created for you. (Page 9)
- **Can I print out a list of all the units of measurement in the Benchmark Management System to keep as a reference when writing benchmarks?** Yes, if you log on to the Benchmark Management System you will see the activity menu. Select the link that says "show all measures" and the system will create a complete list of all the measures, you can print this out and use it as a reference. (Page 32)

Baselines and Output Date

- **Should the output to date always be zero?** Not necessarily. The baseline is the starting points for the benchmark and it will often be zero. If the baseline is a number other than zero, this means that you have documented a starting point in a benchmark that had a pre-existing output level, e.g. "# of homes constructed, "miles of sewer lines." The reason for choosing this number needs to be explained in the Notes section of the benchmark. If you enter "2" as the baseline and do not enter what this number means in the Notes section it will be hard for those reviewing the benchmarks who may not be familiar with the specifics of this project to know what this starting point means. (Pages 9-10)
- **Does the Output to Date measure the amount of progress made on a yearly basis or since the start of the program?** The Output to Date along with the information in the funding section and secondary outputs will measure the progress from the start of the benchmark. If you want to keep yearly updates of your progress you can print and save a report each year and use it to measure the progress from year to year. We recommend this as a "Best Practice." See the section on saving reports with specific data for later use. (Pages 18, 31)

Inactive and Active Benchmarks

- **When should a benchmark be considered Inactive?** Active benchmarks are all the benchmarks that a community is currently implementing or will implement in the near future (next two years). A community should make a benchmark "inactive" if it is a benchmark that they will no longer pursue, the community should mention in the Notes section the reasons why they no longer intend to implement this benchmark. Inactive benchmarks are not just on "the back burner," they are projects that will not be undertaken. The community should not mark benchmarks inactive that they feel they have "completed" because often these benchmarks will continue to generate benefits that the community should be documenting. When a community creates a report in the Benchmark Management System they have the option of excluding or including the "Inactive" benchmarks. (Pages 6, 18, 20)

Table of Contents

Preface	2
Accessing the System	3
Log-in Page.....	4
Training Log-in.....	4
Activity Menu	5
Add a New Benchmark	6
Email Notification.....	10
Benchmark Main Menu	11
Main.....	11
Tasks Page.....	12
Funding and Assistance Page.....	13
Secondary Outputs Page.....	15
View All.....	17
Revise/Update Benchmarks	17
View Benchmarks Page.....	18
Review Benchmarks	20
View Benchmarks Page.....	20
State Office Review Page.....	21
Email Notification.....	21
View Benchmarks or View Other Communities	22
Filter Benchmarks Page.....	22
Create a Report	23
Reports Menu.....	23
Benchmark Overview Report.....	24
Benchmark Detail Report.....	26
Partners and Resources Report.....	27
Output to Date Report.....	29
Run Existing Reports	30
Saving Reports with Specific Data for Later Use.....	31
Log Off	32
Display All Measures	32
Administrative Functions	33
Categories, Activities, and Performance Measures.....	33
Link Activities and Measures.....	33
Sources and Agencies.....	34
Community Information.....	34
Community Types.....	34
State Office Information.....	34
Appendix A	35
EZ/EC Benchmark Review & Approval Process.....	35
Appendix B	36
Training Benchmarks on Housing.....	36

Preface

USDA Rural Development's Office of Community Development (OCD) initially chose to develop a system of monitoring community benchmarks as a component of the new Empowerment Zones/Enterprise Communities/Champion Community (EZ/EC) Initiative in 1995. The benchmark process started out as paper reports that were sent between the communities, the Rural Development State office and OCD. This process was time consuming and difficult for all parties involved; it also did not allow communities to create reports to serve their own needs. Through suggestions from communities and Rural Development staff, OCD set out to recreate the process of monitoring benchmarks. An information system was needed that could be flexible enough to accommodate community individuality, yet standardized enough for national reporting. This led to the creation of the Benchmark Management System (BMS) in 1998. The BMS was designed to fulfill the following objectives:

- To create a management tool for communities and USDA.
- To identify best practices and success stories for wider application and peer learning.
- To spot problems early and target technical assistance.
- To streamline the flow of information.
- To demonstrate accountability to Congress, the White House and the public.
- To promote the many accomplishments of rural communities

If you have a question about using the Benchmark Management System call your Desk Officer. Your Desk Officer is your point of reference for the Benchmark Management System. They have been trained by OCD to provide technical assistance on using the system.

Accessing the System

To use the Benchmark Management System, you must have three things:

- Username
- Password
- Computer with Internet access

The Office of Community Development (OCD) issues one username and password to each community and to each USDA State Office. Each community should then decide which individuals are responsible for updating benchmark information or reporting. USDA State Offices with Round I EZ/EC communities should share their password with the Title XX Administrative Agency in their state.

Internet Access

You access the Benchmark Management System at the url address <http://ocdx.usda.gov>

For proper viewing, you must have Internet Explorer or Netscape Navigator versions 3.0 or higher. These web browsers are available free on the Internet. The Benchmark Management System works more smoothly on higher versions.

The Benchmark Management System is not a software package that you can buy and install on your computer. All information is stored in a database in OCD's offices in Washington, DC. When you access the system, you will use an internet Web Site to enter information. You can access information as long as you are an authorized user and have internet access.

Types of users

There are three types of users: communities, states, and OCD. All users have access to the same information, but are allowed different activities. Community users can add new benchmarks, update existing benchmarks, view other communities' benchmarks and create reports. State users can review benchmarks, view other communities and create reports. As the system manager, OCD can add new users, create new categories, activities and measures, and maintain the database.

Security

Each community can change its own data, but not that of any other community. Communities should only give out their passwords to individuals responsible for updating benchmarks. OCD will not make any additions or changes to benchmarks unless requested by communities.

Log-in Page

Type your username, password, and your own name in the boxes provided. Use the Tab key or the mouse to move to the next box. Then click on the "Log On" button. If you typed an incorrect username or password, your log in will fail and you will need to re-enter the information.

Training Log-in

If you want to try out the functions of the Benchmark Management System without using your community's actual data, you should log in with the training ID. You will be able to use all system features. OCD will periodically "clean out" the data in the training community section.

The training password for a community user is:

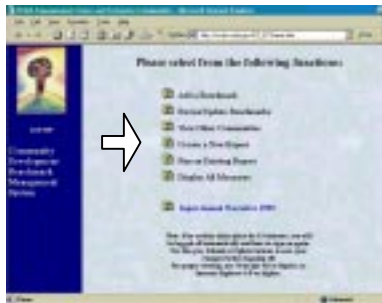
Username: traincom
Password: trn0713

The training password for a state user is:

Username: trainstate
Password: trn0713



Activity Menu



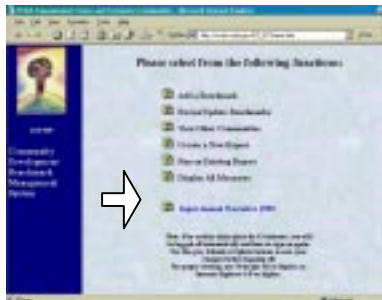
You are now logged into the Benchmark Management System. If no activity takes place for 15 minutes, you will be logged off automatically and have to sign on again.

You should now see the Activity Menu. The activities you see listed will depend on whether you are logged on as a community, state, or OCD user. As you move to other pages in the Benchmark Management System, the activity menu will continue to be displayed in the left column of your screen. If you want to return to this page later, click on Activity Menu.

The full list of activities is as follows:

- Add Benchmark (community)
- Revise/Update Benchmarks (community)
- Review Benchmarks (state)
- View Benchmarks (OCD)
- View Other Communities (community, state, OCD)
- Create New Report (all)
- Run Saved Report (all)
- Display All Measures (all)
- Instruction Manual
- Administer Database (OCD)
- Log Off (all)

Click on the icon next to the activity you wish to go to. If for some reason you do not see any items in your Activity Menu, click on the Reload or Refresh button on your web browser.



When it is time to complete your Annual Narrative Report, you will see an additional activity listed at the bottom of the menu in blue text: "Input Annual Narrative Report"

The Annual Narrative Report is not technically part of the Benchmark Management System, but you access it using the <http://ocdx.usda.gov> web address.

Add a New Benchmark



Active and Inactive status

Use this function when you want to add a new benchmark. [Note: State and OCD users will not be able to access this activity.] Your benchmarks will automatically be assigned the next whole number available. For example, if you have 15 benchmarks in the system, the next benchmark you add will receive number 16. This number will not appear until you have submitted all the required information about your benchmark. You cannot change this number. If you make a mistake and want to "reuse" a number, you must use the revise/update section to make changes. You can't delete benchmarks.

The first screen you will see contains entry boxes for the required information about your benchmark. You must enter information in all of the text boxes in this section, except page numbers and Internal ID, in order to submit your benchmark data.

Help Screens

If you don't know what information is being asked for, click on the underlined text for an explanation of each field. Use the Tab key to move around.

If you take longer than 15 minutes to enter the information for a new benchmark you will be bounced out of the system, have your data prepared ahead of time so it can be entered quickly.

Use this feature to "hide" benchmarks the community will no longer pursue. Inactive benchmarks can be "hidden" from display in the View Benchmarks screen and excluded from reports. Only a community user has the ability to designate a benchmark as active or inactive, but all users can display all benchmarks in the reports.

Active benchmarks are all the benchmarks that a community is currently implementing or will implement in the near future (next two years). An "Inactive" benchmark is one the community will no longer pursue. The community should mention in the Notes section the reasons why they no longer intend to implement this benchmark. Inactive benchmarks are not just on "the back burner," they are projects that will not be undertaken

Benchmarks that are completed should not be made "inactive" because in most cases the projects under the benchmark will continue to generate benefits that the community should be documenting.

<p>Internal ID</p>	<p>New benchmarks will be assigned numbers automatically through the Benchmark Management System. This is the official numbering system recognized by USDA. You cannot change the Benchmark Numbers. If your community wishes to use a different numbering system for internal use, you can assign each benchmark an Internal ID. You can only enter numbers, not letters in this field. <u>You may use numbers with a single decimal</u> (i.e. 1.1, 1.2, 1.3).</p> <p><i>Enter an Internal ID number for this benchmark if you do not want to use USDA's official numbering system. [Optional]</i></p>
<p>Problem/Opportunity</p>	<p>The Strategic Plan identifies and prioritizes issues in a community. Typical categories include housing, health care, education, infrastructure, economic opportunity, environment, crime, and social services.</p> <p><i>Enter the Problem or Opportunity that was identified in your Strategic Plan.</i></p>
<p>Goal/Objective</p>	<p>The "Goal" states what your community wants to achieve with respect to a particular problem or opportunity. Select the goals from your Strategic Plan that you want to focus on for the next two years and enter them into the BMS. The information in your benchmarks should be updated monthly, and always keep in mind that your benchmarks should be a two-year projection of the activities your community hopes to achieve. It is important that benchmarks are written with a clear and measurable goal in mind.</p>
<p>Pages from Strategic Plan</p>	<p>Please enter the page number from your Strategic Plan that relates to this Goal/Objective. This will speed up USDA State Office review of your benchmark. This is an optional field, but it is recommended that you provide the information.</p> <p><i>Enter the page numbers from your Strategic Plan that refers to this Goal/Objective. [Optional]</i></p>
<p>Benchmark Description</p>	<p>Describe what you are going to do to achieve your goal. Select strategies that can be measured, because you will also choose performance indicators for them. Benchmarks will usually involve a number of smaller projects and tasks, such as applying for funding or preparing a plan. If you create an extremely large number of benchmarks, you may have difficulty tracking them. If you create very few benchmarks, they may not reflect the whole range of problems and issues that you are addressing. Enter a description of your benchmark.</p>

Sample Benchmark Description

*Make the description focused and measurable,
“Construct forty new single family homes in the EC area over the next two years.”*

"Create three new after school computer training programs and provide training to 200 students over the next two years."

"Establish a business incubator and generate three new businesses per year over the ten years of the designation"

Category

Ten major categories of community activities are listed in the drop down box. They are used by USDA to group similar community benchmarks for national reporting purposes. You will have the ability to link your benchmark to additional categories when you update your benchmark.

The Category field is linked to the Activity and Unit of Measurement fields in the Benchmark Management System. This allows you to sort information and create reports later. You must select a Category before you can select an Activity. This means that if you change one, you may have to change them all.

Select the category that best describes your benchmark from the drop down list (e.g., Housing or Education).

Type of Activity

The Benchmark Management System will provide you with a list of activities that are linked to the category that you selected. The Type of Activity is used by USDA to group similar community benchmarks for national reporting purposes.

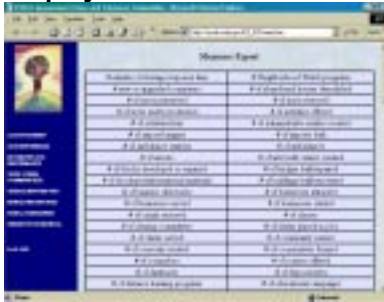
The Activity field is linked to the Category and Unit of Measurement. You must select an Activity before you can select a Unit of Measurement. If you change the Activity, you will have to reenter the Unit of Measurement.

Select the activity that best describes your benchmark from the drop down list (e.g., Single Family Housing or Job Training).

Unit of Measurement

A unit of measurement shows your progress towards meeting a goal. A benchmark may have several outputs (30 new housing units constructed, 30 new homeowners, 15 jobs created), but you should choose only one of these as your main indicator. Choose something that reflects progress toward addressing the goal (e.g., “number of housing units constructed”, not “number of programs started”). Adding additional units of measurement, called Secondary Outputs will be discussed later.

Display All Measures



The Benchmark Management System will provide you with a list of performance measures that are linked to the category and activity that you selected earlier. Other communities with similar activities are using these measures, or the measures are recommended by OCD as being appropriate for the category. Select a performance measure from the existing list if at all possible. This will help make reporting consistent among different communities. If you do not find an appropriate measure, you can select from the entire list of measures available in the Benchmark Management System by clicking with your mouse on the underline link "show all measures". Logging in to the system and selecting the Display All Measures will create a complete list of all the available units of measure in the system. Community users cannot create their own new performance measures.

If the measure you would like to use is unique and not listed in the system, you must contact OCD to request that it be added. You can send this request to your Desk Officer. You need to provide the name of the unit of measurement, the type of activity and category it is linked to, and an explanation of why your benchmark cannot be measured using the existing choices. In the meantime, you must select a different measure in order to complete your benchmark addition. Unit of measurement is a required field, and the system will not allow you to submit data without selecting a measure.

If you change the Category and/or Activity, your unit of measurement, baseline, and target information will be automatically erased. You will have to reenter this information.

Source of Data

Please indicate where you will get your information. The data should be readily available each year so that you can evaluate your progress and report on outputs. Ideally, it should be the same source for both the baseline and benchmark target.

Enter the source of data for your benchmark.

Baseline

The baseline is the starting points for the benchmark and it will often be zero. If the baseline is a number other than zero, this means that you have documented a starting point in a benchmark that had a pre-existing output level, e.g. "# of houses constructed," "miles of sewer lines." The reason for choosing this number needs to be explained in the Notes section of the benchmark. If you enter "2" as the baseline and do not enter what this number means in the Notes section it will be hard for those reviewing the benchmarks who may not be familiar with

the specifics of this project to know what this starting point means.

Enter the baseline for your benchmark. You can only enter a number in this field, not text.

Benchmark Target

The target is a figure that identifies the goal for your benchmark in relation to the chosen unit of measure. Hence, when you complete your benchmark you will have progressed from the baseline to the target that was set. For example, from 0 houses renovated to 20 houses renovated. The relationship from baseline to the target needs to be positive; the BMS will not register a negative relationship between the baseline and the target. For example, if there are 700 people in your community on the welfare rolls and you have a benchmark goal of assisting 100 people to get off welfare you would have to select a baseline of 0 and a target of 100. You could not show a baseline of 700 with a target of 600, since the BMS will not register a negative relationship as a success.

Enter the benchmark target. You can only enter a number in this field, not text.

Submitting Data

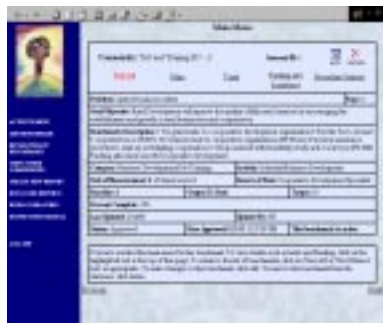
Click on the "Submit" button once you have entered all the required information. If you have missed a required field, you will receive an error message. If you entered everything correctly, you will view the main menu for your new benchmark.

Email Notification

When you add a new benchmark, an email message will be sent to your USDA Rural Development State Office, and the approval status of the benchmark will be reset to "Awaiting Review." The message will be sent after you log out of the benchmark system.

If you are automatically logged out of the system because there was no activity for 15 minutes, an email message will not be sent. The next time you log into the system, you will see a message on the Activity menu indicating that you have email notifications that need to be sent.

Benchmark Main Menu



This page displays overview information about a benchmark and allows you to access detailed information. Note the benchmark number at the top of the chart. You can also see who has entered information about the benchmark most recently, check its review status by the Rural Development State Office, and see how much progress has been made. There is space available to record the Output to Date as you make progress on your benchmark. The field for "output to date" does not show up on the Add a New Benchmark menu. After you have finished creating a new benchmark you must click on the main page of the benchmark and select the "edit" button in the upper right hand corner of the page. The benchmark will show a blank for the field "Output to Date" enter the number that reflects the progress for the unit of measurement for this benchmark. If no progress has taken place, enter a zero in this field, do not leave the field blank.

Across the top of the page you will see underlined text with different headings. Main, Tasks, Funding and Assistance, and Secondary Outputs are used to "move around" in a benchmark record. Click on the underlined text to change pages. The Benchmark Number or Internal ID is at the top of the page.

View All

The "View All" text link takes you back to the entire list of your community's benchmarks, or if you are a state user, to a list of all communities in your state. It is explained further on page 18.

Main

The "Main" text link will take you back to the Benchmark Main Menu if you are viewing one of the detail pages. The "detail pages" are Tasks, Funding and Assistance, and Secondary Outputs. The main menu contains overview information about a benchmark. If you make changes in this section, it may require USDA State Office review. Changes made in the Tasks, Funding and Assistance, and Secondary Outputs pages generally do not require USDA review and approval. See **Appendix A** for additional information on EZ/EC benchmark review and approval process.

At the top right-hand corner of the page is an Edit icon. Click on this picture if you want to make any changes in the information you see in the chart. To view details such as tasks and funding, click on the highlighted text.

Review Status

OCD will refer to this section when reviewing projects at the National Office, particularly when writing letters of support and approving request for USDA Rural Development Earmark Funds. When an EZ/EC community applies for USDA Rural Development Program area funds (e.g. Rural Business, Rural Housing and Rural Utilities), that have been earmarked for EZ/EC communities the granting program agency submits a form to OCD. This form is reviewed by the Desk Officer for the region to be sure the project and the funding are entered properly in the Benchmark Management System and the Rural Development State Office has approved the project. If so, the Desk Officer and the EPD Director sign off on the form and fax it back to the appropriate Rural Development Program area.

Title XX Administering agencies (for Round I EZ/EC communities) should also take note of the review status of a benchmark. If a benchmark has not been reviewed by an USDA State Office for 45 days (Status = Awaiting Review), it will automatically be approved. If a benchmark is Under Review, the 45-day approval date does not take effect.

Benchmarks must have an "Approved" status before they are eligible for SSBG spending, USDA EZ/EC Grants, or USDA earmarked funding.

Tasks Page

Click on the "Tasks" text link to reach this page.

In this section you can add detailed information about this benchmark. This information will help you coordinate and manage activities related to your benchmark.

Benchmark Leader(s)

Identify who will coordinate activities for this benchmark. It can be a person or agency.

Enter the name of the Benchmark Leader directly in the white box provided. Click on the gray "Update" key to save your changes.

Tasks

Tasks and Projects are the specific actions required to complete each benchmark. Tasks could include: apply for funding, hold a public hearing, hire a contractor, select a site, etc. Identify a task leader, projected timelines with start and end dates, and a projected budget for each task. Do not duplicate costs under multiple tasks. If the task is to seek funds, don't list the amount you seek, just the cost of applying for funding.

Funding and Assistance Page

Funding Resources

Click on "Add New Task" to create a new entry. Type information in the appropriate boxes. Enter dates in the month/day/year format. Example: 7/1/99. Click the gray "Submit" button to save your changes. Tasks will automatically be lettered (A, B, C) in order by the system. Click on Edit or Delete to make changes in an existing task.

If you want to check off the box to the right of the Task to show that the Task has been completed you must click on the Edit button first or you changes will not be saved after you log out.

Click on the "Funding" text link to reach this page.

In this section you can track the resources that are going into this benchmark.

Identify all funding for this benchmark not just EZ/EC funds or USDA Rural Development Funds.

When entering funding three things must be listed:

- The Source, such as Federal Government, State Government, Local or Regional Government, Private Sector, Non profit, or Private Sector that provided the funding.
- The Agency, the name of the government agency, non-profit organization or private business that provided the funding.
- The Program, that is the specific name of the program within the organization or agency that provided the funding and if there is more than one entry of funding from a source add a reference to the project being funded.

The Source for funding must be selected from the pull-down screen. If the agency is part of the Federal government it can be selected from the list on the pull-down screen, if the federal agency is not listed you can select the word "other" and add the name of the federal agency along with the program information under the field for "program."

If you select the source as "private sector" or "non-profit" list the name of the organization under the "agency" field. Do not leave it blank. All funds entered must be accounted for, and the appropriate Source, Agency and Program identified

As mentioned before, if there are multiple sources of funding from one source/agency enter the name of the agency and the relevant program information, but also add a reference to the project in which the funds will be used. For example, if you

have more than one grant from USDA Rural Development from the Community Facilities program, identify which project under this benchmark will utilize these funds. See the Training Housing Benchmark at the end of this manual as an example.

Funds Received are those that have been received and are currently available for use. Funds Requested are those funds you have actually written applications for and submitted to the funding agency. **Do not enter funding requests that you are considering. Rather, wait until a grant or loan request is actually submitted.**

Benchmarks that will not be allocated SSBG dollars or USDA EZ/EC grant funds by the community still need to be entered into the BMS and all funding needs to be listed like any other benchmark. The proper way to enter EZ/EC funds is listed below:

Round I EZ/EC Community

List SSBG dollars in the funding section as shown below:

Source- SSBG from Designation or RII USDA EZ/EC grant

Agency- Dept. of Health and Human Services or HHS

Program- EZ/EC

Round II EZ/EC Community

List USDA EZ/EC grant dollars in the funding section as shown below:

Source- SSBG from Designation or RII USDA EZ/EC grant

Agency- USDA Rural Development

Program- EZ/EC

It is important to be consistent when entering funding information. Review all the Source and Agency selections closely to choose the best option. Funds that are from USDA Rural Development should be identified as such; they should not be placed in the “other Department of Agriculture agencies” category. All agencies and grants should be identified by their specific name; use the “Other” option only if the agency is not listed. Remember, only make an entry into the funding section when a grant or loan request has actually been submitted.

When applying for funding enter the amount of funding that has been applied for under the "amount requested" column and a zero in the "amount received" column. Then if the funds are granted, change the zero in the "amount received" column to the amount of funding that has been awarded. If the amount awarded is less than the amount requested **do not** change the

Technical Assistance and In-Kind Resources

amount requested to the amount awarded. Those reviewing the benchmarks will anticipate that the community will seek other sources of funds to cover the shortfall. **Do not enter a zero in the amount requested once funds have been received despite what earlier versions of the training manual may have implied.**

Click on "Add New Funding" to add new information. Enter information in the white boxes provided. You must enter a Source/Partner for all Funds Received. When you are finished, click on the gray "Submit" button to save your changes. Click on "Edit" or "Delete" to make changes in existing funding information.

Identify the non-monetary things you have secured (in-kind, technical assistance, or volunteer resources). Be creative. Start with the resources that are already available. Identify the partners (private, non-profit, local, state, federal) that can help you. Then enter the type of contribution and the quantity of in-kind or technical assistance. The "Quantity" field will only accept numbers, not text. Therefore describe the assistance under the type of contribution in such a way that a number can measure it. For example, the source might be AmeriCorps. The type of contribution would be 20 volunteers for 8 Saturdays (160 days of volunteer assistance). The Quantity would be 160.

Click on "Add Assistance" to add new information. Enter the information in the white boxes provided. Click on the gray "Submit" button to save your changes. Click on "Edit" or "Delete" to make changes in existing Assistance information.

Secondary Outputs Page

Click on the "Secondary Outputs" text link to reach this page.

In this section you can document additional successes and record comments about your benchmark.

Secondary Outputs

Secondary Outputs are measurable outputs that are in addition to the benchmark's primary unit of measurement. The Category, Activity and Performance Measure lists are treated the same as the Add a Benchmark page. You may create as many Secondary Outputs as you need.

Click on Add Secondary Output to add new information. Select a category and Activity from the drop down lists. Click on Edit or Delete to change an existing output measure.

**EZ/EC Key Indicator
Report (Unit of
Measurements)**

Many Secondary Outputs are key national indicators that USDA uses to compare the progress of all EZ/EC, REAP and Champion Communities. When you select the option to create a secondary output, the list will only contain indicators that you have not already selected for that benchmark.

The Secondary Outputs component of the benchmark system is a very important tool to measure the aggregate benefits that have occurred in a community as a result of completing a benchmark.

Some of the key indicators to consider include:

- # of jobs created
- # of jobs saved
- # of clients placed in jobs
- # of clients served
- # of loan funds established
- # of loans given
- # of buildings built/renovated
- # of houses constructed
- # of houses rehabilitated
- # of new/upgraded computers

Notes

This is an optional section for community use, but it is very useful for helping communities explain pertinent information about the benchmark. Communities can describe the progress of a benchmark (e.g., Delayed due to bad weather, scaled back project due to lack of funding, extremely successful program will be duplicated elsewhere). This section can also be used to record information about community meetings or public outreach related to this benchmark. If a baseline other than zero is chosen you can use the Notes section to explain the figure that was selected. You will probably find it useful to date each of these entries in the Notes section. When dated, these entries give a time line of events. The Notes section will assist in the USDA State Office review of the benchmark.

Enter comments in the white box provided for notes.

Click on the gray "Update" button to save your changes.

View All

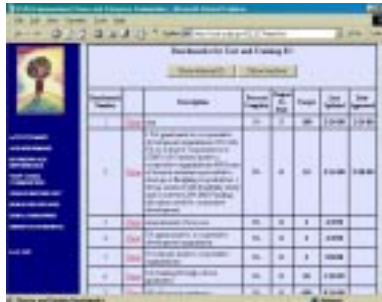
View All Benchmarks Page

If you select this link you will be taken to a list of all benchmarks for your community, or if you are a state user, to a list of all communities in your state.

This page provides summary information about each benchmark, including the Description, Percent Complete, Output To Date, Target, Last Updated, and Date Approved. Percent Complete is calculated automatically by comparing the Output to Date to the Benchmark Target. Last Updated is also entered automatically, depending upon when the last revision was made to a particular benchmark. The Date Approved is the last time that a State Office approved the benchmark. If there is no date in that column, it means the benchmark has not yet been approved.

[Note: This page can be accessed by all users from different parts of the system, so the description is repeated in other sections of this Instruction Manual]

Revise/Update Benchmarks



Name	Description	Percent	Target	Date	User
1
2
3
4
5

We strongly suggest that every community update its benchmarks on a monthly basis. This includes updating the outputs to date, task information, funding information, secondary outputs and relevant information in the notes section.

Communities that do not update their benchmarks on a monthly basis will risk losing eligibility for USDA Rural Development earmarked funding and OCD letters of support for grant applications. Communities that persist in neglecting to update their benchmarks on a monthly basis will have all SSBG dollars and USDA EZ/EC grant funds suspended and will be considered for revocation of their Empowerment Zone, Enterprise Community or Champion Community status.

Annual Benchmark Report

Every August all Empowerment Communities will be required to complete an **Annual Benchmark Report**. The report is a "Detailed Report" of each community's benchmarks. Communities that have all their benchmark information current will merely have to print out a report. Those communities that have outdated information will be required to update all the information in their benchmarks or face the penalties listed above until they comply.

[Note: All users will be able to view information about benchmarks, but only community users have the ability to revise or update information.]

View Benchmarks Page

This section is accessed by selecting "View All" from the Benchmark Main Menu.

This page provides summary information about each benchmark, including the Description, Percent Complete, Output To Date, Target, Last Updated, and Date Approved. Percent Complete is calculated automatically by comparing the Output to Date to the Benchmark Target. Last Updated is also entered automatically, depending upon when the last revision was made to a particular benchmark. The Date Approved is the last time that a State Office approved the benchmark. If there is no date in that column, it means the benchmark has not yet been approved.

[Note: This page can be accessed by all users from different parts of the system, so the description is repeated in other sections of this Instruction Manual.]

Show Inactive

At the top of the page is a gray button that says "Display Inactive." You can use this button to display only current benchmarks or to view them all. Only a community user has the ability to designate a benchmark as active or inactive, but all users can display all benchmarks.

Changes to existing Benchmarks should be made from the Benchmark Main Menu. Refer to the section on **Add a Benchmark** (Page 6) for detailed explanations of each page.

Output to Date

When you add a new benchmark, you will not be asked to provide an output to date. However, you should provide data for the Output to Date when you update or revise your benchmark.

To enter data for the Output to Date, go to the main menu for each benchmark. Click on the Edit icon and type in the white box provided for this field.

When you change your Output to Date, the system will automatically recalculate the percentage of benchmark completed. Always enter a zero in the Output to Date field if no progress has been made; do not leave it blank.

Category, Activity, Unit of Measurement

The Category, Activity and Unit of Measurement fields are linked in the Benchmark Management System (this allows you to sort information and create reports). This means that if you change one, you may have to change them all. For example, if you change the Category, the system will reset your Activity, Unit of Measurement, Source of Data, Baseline and Target. You

will need to reselect these fields. Likewise, if you change the Activity, you need to reenter the Unit of Measurement, Source of Data, Baseline and Target.

Tasks Done

When you update benchmark information, you should also indicate which tasks have been completed.

To indicate that a task is completed, go to the Tasks Page for each benchmark. Click on "edit" for each task and then place a checkmark in the Task Done box. If you do not click edit before placing a checking the box your changes will not be saved

If you have updated your tasks properly, the system will automatically recalculate the percentage of tasks completed. If a budget is listed for the task, update the estimated budget to reflect the actual expenditures now that the task has been completed.

Preparing for the Annual Benchmark Report

The Annual Benchmark Report, mentioned earlier in this section consists of a printout of all the data for your community's benchmarks that is in the system. **If you keep your benchmarks updated on a regular basis, you will not have any additional work for the report.** When updating your benchmarks, take special note of the following items:

- Output to Date
- Secondary Outputs
- Budgets for Tasks
- Funding and Technical Assistance Resources
- Tasks Done

Email Notification

When a significant change has been made to a benchmark, an email message will be sent to your USDA Rural Development State Office, and the approval status of the benchmark will be reset to "Awaiting Review." The message will be sent after you log out of the benchmark system.

If you are automatically logged out of the system because there was no activity for 15 minutes, an email message will not be sent. The next time you log into the system, you will see a message on the Activity menu indicating that you have email notifications that need to be sent.

Review of Benchmarks

View Benchmarks Page

Click on "Review Benchmarks" in the Activity Menu or "View All" in the Benchmark Main Menu to reach this section.

This page is the same as what community users see when they select "Revise/Update Benchmarks." However, it displays all the benchmarks for a given state. State users will only see communities in their state.

This page provides summary information about each benchmark, including the Description, Percent Complete, Output To Date, Target, Last Updated, and Date Approved. Percent Complete is calculated automatically by comparing the Output to Date to the Benchmark Target. Last Updated is also entered automatically, depending upon when the last revision was made to a particular benchmark. The Date Approved is the last time that a State Office approved the benchmark. If there is no date shown, it means the benchmark has not yet been approved.

Show Internal ID

[Note: This feature is only available to community users.] This feature allows community users to display their benchmarks using an internal numbering system, rather than the official USDA benchmark number. The benchmarks will be listed from the smallest to largest numbers.

Click on the "Internal ID" button to display benchmarks by their Internal ID instead of their Benchmark Number.

Show Inactive

At the top of the page is a gray button that says "Display Inactive." You can use this button to display only current benchmarks or to view them all (active and inactive). Only a community user has the ability to designate a benchmark as active or inactive, but all users can display all benchmarks.

Click on the "Display Inactive" button to view all benchmarks instead of just active ones.

Community name and benchmark number

Community users will see the word "View" highlighted in red text and underlined next to each Benchmark Number or Internal ID. State and OCD users will see the community name highlighted in red text and underlined.

To view detailed information about a benchmark, click on the underlined text for a Benchmark Number (or Internal ID). This will take you to the main menu for that benchmark. To return to this page later, click on "View All" at the top of the Benchmark Main Menu.

State Office Review Page

[Note: Community users do not have access to this activity.] In this section, state users can change the review status of a benchmark. Every time a significant revision is made to a benchmark, the review status will be reset to "Awaiting Review." Refer to **Appendix A** for guidelines on what is considered a "significant revision" and the factors to consider in reviewing a benchmark.

A USDA State Office may request that the community provide information in their benchmark submission to assist in the review. This information includes the page numbers from their strategic plan that refer to a benchmark or comments in the Notes section to indicate when community outreach meetings took place. However, additional documentation or information may still be needed complete the review. **USDA State Offices are responsible for keeping the Title XX Administering Agencies (for Round I EZ/EC communities) informed about changes to community benchmarks.**

Click on Add Entry to indicate whether the benchmark is awaiting review, under review, approved or denied. The community and the Office of Community Development will be notified of your review action by email.

Email Notification

When a community adds a new benchmark or significantly changes an existing one, an email message will be sent to the State Office automatically, and the approval status of the relevant benchmarks will be reset to "Awaiting Review."

After you "Approve" or "Deny" a community benchmark, an email message will automatically be sent to OCD. The message will be sent after you log out of the benchmark system.

If you are automatically logged out of the system because there was no activity for 15 minutes, an email message will not be sent. The next time you log into the system, you will see a message on the Activity menu indicating that you have email notifications that need to be sent.

View Benchmarks or View Other Communities

OCD users access this section by selecting "View Benchmarks" from the Activity Menu. State and community Users access this section by selecting "View Other Communities" in the Activity Menu.

This section allows communities and state users to view the activities of other communities. It was added to the Benchmark Management System based on feedback from users. Since all communities receive federal funding, benchmark information is considered public. Community users may find it useful to see how others have financed or managed activities similar to those they are planning.

Filter Benchmarks Page

You can filter your view of community benchmarks in one of two ways:

Option 1: Select State(s) and Community Type(s)

Option 2: Select specific communities by name

You can only use one type of filter criteria. If you select specific communities, the system will ignore anything you have selected in the State or Community Type section.

To select more than one menu item, hold down the "Control" key on your keyboard while you click on items. Click on the gray "Submit" button when you are ready.

You will be taken to a page that contains the same information as the "View Benchmarks Page."

Show All

If you click on the text "Show All" you will see a list of all community benchmarks. You will see a list of alphabetical letters at the top of the page. To move around in this section, select the first letter of the community name that you wish to view.

Hide Filter

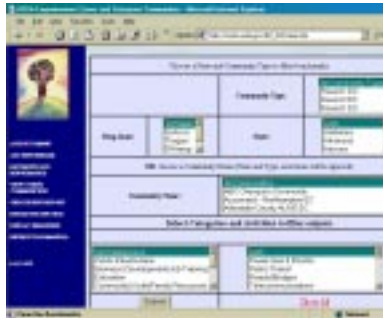
After you have selected filter criteria, you can hide the filter criteria at the top of the page.

Change Filter

You can also change the criteria that you selected. By choosing new items and clicking on the gray "Change Filter" button.

Create a Report

Reports Menu



The Benchmark Management System includes built-in reports that allow you to print out the information in the system. These reports are useful for internal community management, providing information to the public as well as state and national reporting purposes. For example, a standard progress report can be printed out every month for Board meetings. The reports also provide an overview of progress by totaling the amount of funding received or "jobs created" for selected benchmarks.

At the top of the reports menu, there is a box that lists the four types of reports available:

- **Benchmark Overview Report:** This report will allow you to display summary information about more than one benchmark. You will not be able to view tasks/projects or funding by source in this report. This type of report is an excellent hand out for board meetings and public meetings to illustrate progress to date on every benchmark.
- **Benchmark Detail Report:** This report will allow you to view detailed information about benchmarks, including tasks/projects, funding by source, and assistance received. This type of report is similar to the Benchmarking Worksheets provided in the *Guide to Implementation and Benchmarking for Rural Communities*. It is also used for the Annual Benchmark Report discussed earlier.
- **Partners and Resources Report:** This report displays funding, assistance and partners for one or more benchmarks. This report is very useful in determining the total amount of funds leveraged by a community and is a useful tool for developing articles for a community newsletter or other media.
- **Output to Date Report:** This report displays output information for one or more benchmarks. This report measures the output to date of all the units of measurement and helps to give a quick total of the benefits brought about by the EZ/EC, REAP Zone or Champion Community.

The Reports Menu will load more slowly than other pages, because it contains so much information.

Select the type of report you want from the list at the top of the page.

Filter Benchmarks

You must also select filter criteria for the benchmarks. This is the same as the Filter Benchmarks menu in the View Benchmarks and View Other Communities sections.

You can filter your view of community benchmarks in one of two ways:

Option 1: Select State(s) and Community Type(s)

Option 2: Select specific communities by name

You can only use one type of filter criteria. If you select specific communities, the system will ignore anything you have selected in the State or Community Type section.

To select more than one menu item, hold down the "Control" key on your keyboard while you click on items. Click on the gray "Submit" button when you are ready.

Once the communities you want to include in the report have selected, you can also filter down by selecting only those benchmarks that fall under a particular Category or Activity.

If you selected the Benchmark Overview Report, you will see the settings menu for this report.

You can create a title for this report, or it will be given this default title automatically:

Benchmark Overview Report
[Community Name]

Enter a title for the report if you do not want the default title.

Next, you must select the benchmarks you want to include. The default setting is all the benchmarks of your selected communities.

Select the benchmarks you want to include. Hold down the "Control" key on your keyboard to select more than one item.

You have the option of displaying the Benchmark Number, Benchmark Description or both items. [You can select Internal ID as a sorting feature in the following sections.] You also have the option of displaying active benchmarks only or all benchmarks. The default settings are for both Benchmark Number and Benchmark Description to be included, and for only active benchmarks to be displayed.

Benchmark Overview Report

Choosing Report Settings

Display Options

Select the display options you want.

Next, choose the items you wish to view. These items will be displayed as columns across the top of the report. You will be able to view all items on your computer screen, but the number of items you can print out is limited by your page width. Change the page setup in your web browser to landscape or horizontal in order to print more items. You should be able to print about seven or eight items in one report. Use the Print Preview in your web browser to see how many items you can include. You will need to create more than one report to print out all the items.

Click on the boxes by each item to add or remove check marks. Click on the gray "Select All" button if you want to place check marks in all boxes. Change the page setup in your web browser if you want to print more items.

You have the option of changing the sort order of the report. The default sort will be benchmark number. If you want to view information by Internal ID, select that instead.

Select another option if you do not want information sorted by Benchmark Number.

Click on the gray "Submit" button when you are ready to create the report.

You will be taken to the report view. The column headings at the top of the page are the items you selected.

Changing Sort Order

The data is displayed according to the sort order you selected. You can change the sort order by clicking on any of the column headings.

Click on any column heading to use it as the sorting item.

Changing Report Settings

To change your report settings, use the Back button on your web browser to return to the previous page.

Printing

To print this report, use the Print function in your web browser.

Save Report Settings

You can save your report settings for future use and the information will be automatically updated. To save the specific contents of this particular version of the report see page 31.

Click on "Save This Report" if you want to reuse the same report settings. Enter the title you want to give the report and click on the gray "Submit" button.

To Create Another Report

Benchmark Detail Report

Choosing Report Settings

Viewing Benchmark Data

You will be taken to the Saved Reports Page. See the section on **Run Saved Reports** for more detail.

If you want to create another report, click on "Create New Report" in the Activity Menu on the left side of your screen, or use the Back button on your web browser.

If you selected the Benchmark Detail Report, you will see the settings menu for this report.

You can create a title for this report, or it will be given this default title automatically:

Benchmark Detail Report
[Community Name]

Enter a title for the report if you do not want the default title.

Next, you must select the benchmarks you want to include, the default setting is all the benchmarks of the selected communities.

Select the benchmarks you want to include. Hold down the "Control" key on your keyboard to select more than one item.

You have the option of displaying benchmarks by Benchmark Number or Internal ID. You also have the option of displaying active benchmarks only or all benchmarks. The default settings for displaying by Benchmark Number, and including only active benchmarks.

Select the display options you want.

Next, choose the items you wish to view.

Click on the boxes by each item to add or remove check marks. Click on the gray "Select All" button if you want to place check marks in all boxes.

Click on the gray "Submit" button when you are ready to create the report.

You are now in the report view. Since this report has a large amount of detail, you will only be able to view and print 10 benchmarks at a time. This is designed to prevent Benchmark Management System from "crashing" or "timing out" from heavy use. At the top of the page, you will see "First 10," "Previous 10," "Next 10" and "End." Navigate through your benchmarks in blocks of ten using these buttons.

Changing Report Settings

To change your report settings, use the Back button on your web browser to return to the previous page.

Printing

You can only print the benchmarks that are currently displayed on your screen, which means that you can only print 10 benchmarks at a time.

Use the Print function in your web browser to print the benchmarks that you are currently viewing. You can only print 10 benchmarks at a time.

Unfortunately when printing benchmarks they will not always fit neatly on to one page, it depends on the amount of information listed under each of the fields.

Saving Report Settings

You can save your report settings for future use. You cannot save the contents of this particular version of the report within the Benchmark Management System.

Click on "Save This Report" if you want to reuse the same report settings. Enter the title you want to give the report and click on the gray "Submit" button.

You will be taken to the Saved Reports Page. See the section on **Run Saved Reports** for more detail.

Create a New Report

If you want to create another report, click on "Create New Report" in the Activity Menu on the left side of your screen, or use the Back button on your web browser. This will take you back to the Reports Menu.

Partners and Resources Report

If you selected the Partners and Resources Report, you will see the settings menu for this report.

Choosing Report Settings

You can create a title for this report, or it will be given this default title automatically:

Partners and Resources Report

Enter a title for the report if you do not want the default title.

Next, you must select the benchmarks you want to include. The default setting is all the benchmarks of your selected communities.

Select the benchmarks you want to include. Hold down the "Control" key on your keyboard to select more than one item.

This report is organized by Source/Partner. These are listed in the next drop down box. Sources can be selected by highlighting the appropriate text. If you want to choose sources in a random order, hold down the "Control" key on your keyboard as you click on benchmark numbers.

Select the Sources/Partners you want.

You have the option of displaying Funding data only, Assistance data only, or both. You also have the option of displaying active benchmarks only or all benchmarks. The default settings is for Funding data only to be included, and for only active benchmarks to be displayed.

Select the display options you want.

Click on the gray "Submit" button when you are ready to create the report.

You are now in the report view. The report will total the Funds Received and Funds Requested from each Source/Partner.

Changing Report Settings

To change your report settings, use the Back button on your web browser to return to the previous page.

Printing

Use the Print function in your web browser to print this report.

Saving Report Settings

You can save your report settings for future use. You cannot save the contents of this particular version of the report.

Click on "Save This Report" if you want to reuse the same settings. Enter the title you want to give the report and click on the gray "Submit" button.

You will be taken to the Saved Reports Page. See the section on **Run Saved Reports** for more detail.

Create a New Report

If you want to create another report, click on "Create New Report" in the Activity Menu on the left side of your screen, or use the Back button on your web browser. This will take you back to the Reports Menu.

Output to Date Report

Choosing Report Settings

If you selected the Output to Date report, you will see the settings menu for this report.

You can create a title for this report, or it will be given this default title automatically:

Output to Date Report

Enter a title for the report if you do not want the default title.

Next, you must select the benchmarks you want to include. The default setting is all the benchmarks of your selected communities.

Select the benchmarks you want to include. Hold down the "Control" key on your keyboard to select more than one item.

You can filter your view of outputs in one of two ways to view outputs.

Option 1: Select Category and Activity

Option 2: Select specific performance measures.

You can only use one of these two options. If you select performance measures, the system will ignore any category and activity selections.

Select the filter criteria for your outputs.

You can view outputs by performance measures only or sorted by categories and activities. You also have the option of displaying active benchmarks only or all benchmarks. The default setting is for active and inactive benchmarks to be included, and outputs displayed by performance measures only.

Choose the display settings you want.

You can also choose a time limitation for your report. You can specify a start and end date, based on four quarters each year. The default is to include all outputs, regardless of date.

Select start and end dates if you want.

Click on the gray "Submit" button when you are ready to create the report.

You are now in the report view. The report displays total outputs for each performance measure selected. If you do not see some performance measures that you selected, it means that the benchmarks you selected do not have outputs for those measures.

Changing Report Settings

Printing

Saving Report Settings

Create a New Report

Run Existing Reports

Existing Reports Page



To change your report settings, use the Back button on your web browser to return to the previous page.

Use the Print function in your web browser to print this report.

You can save your report display options for future use. You cannot save the contents of this particular version of the report.

Click on "Save This Report" if you want to reuse the same display options. Enter the title you want to give the report and click on the gray "Submit" button.

You will be taken to the Saved Reports Page. See the section on **Run Saved Reports** for more detail.

If you want to create another report, click on "Create New Report" in the Activity Menu on the left side of your screen, or use the Back button on your web browser.

Click on the Run Existing Reports text in the Activities menu on the left side of your screen.

You are now at the Existing Reports Page. You will also see this page after you have saved a report. The chart on this page will display only those reports that have been created by your office (community, state or OCD). You can create reports using the same display options as a report you have previously run. These reports will display the most current data available in the system.

A new feature of this menu is the ability to choose to have your report displayed in an Excel format.

To create a report, click on the name of the report. To make changes to it, click on Edit or Delete.

If you choose to edit a report, you will be taken back to the Create Reports Page. After you change the menu items, you have the option of saving the changes to that existing report or saving them as a new report.

Select the options you want to change, if desired.

Saving Reports with Specific Data for Later Use

The Benchmark Management System allows you to save report settings so you can re-run reports over and over again confident that the recurring reports you generate from your community's data will be consistently displayed, but updated with all the latest information in the system.

You also have the ability to save a static report of your benchmark information to keep as snapshot of where your community was at a particular point in time. Some communities like to keep these as annual report for comparison from year to year.

To permanently save any of the reports you may have created (along with all its formatting), in a "static form" follow these simple steps.

First Way to Save Report

1. Locate your report by first going into the "Run an Existing Report" menu.
2. When you have determined which report you wish to save, right-click on the report and choose the "Save Target As" option.
3. In the pop up window, choose a file name and a location to save your file. The file type will be html; this file can be read by your browser or edited with most word processing programs.
4. Click the "Save" button and you're done.

Second Way to Save Report (Excel Format)

1. Locate your report by first going into the "Run an Existing Report" menu.
2. When you have determined which report you wish to save, choose the "View with Excel" option to run the report.
3. After the report has run and is displayed on your screen, drop down the "file" menu on your browser and select the "File As" option.
4. In the pop up window, choose a file name and a location to save your file. The file type will be an Excel workbook (.xls); this file can be opened by Excel.
5. Click the "Save" button and you're done.

Remember these static reports will not update with the latest information in the Benchmark Management System.

Log Off

Use the gray "Submit" or "Update" buttons to save your changes before logging off. If the system does not detect any activity for 15 minutes, it will automatically log you off. This is to prevent OCD's server from being "tied up" with log-ins that are not active.

Click on Log Off when you are ready to exit the Benchmark Management System. You will be taken back to the Log-in Page.

Display All Measures

This page displays all the performance measures that are currently available in the Benchmark Management System. You can print this out using the "Print" function in your web browser.

Administrative Functions

This section contains instructions for the OCD Database Administrator.

The OCD Database Administrator will periodically need to make changes in the system to make sure it is operating smoothly. The Administrator can add, edit and delete information by using the following Administrative Functions:

- Edit Categories
- Edit Activities
- Edit Performance Measures
- Link Activities and Measures
- Edit Sources
- Edit Agencies
- Edit Community Information
- Edit Community Types
- Edit State Office Information

Editing

The editing menus look the same for all the functions. The chart at the top of each page allows you to edit or add information, and the list of existing entries appears in the chart below.

Type in the white box to add a new entry, and then click on the gray "Submit" button. Click on "Edit" to make changes to an existing entry. Type the changes in the white box in the top chart, and then click on the gray "Submit" button to save the change. Click on "Delete" to remove an entry. You will not be able to delete any entry that has benchmarks linked to it.

Categories, Activities, and Performance Measures

Each Activity must be linked to a Category, and each Measure must be linked to at least one Activity and Category. In the Edit Activities Page, you will see the word "Measures" highlighted and underlined for each existing activity description. If you click on this text, you will be taken to the Link Activities and Measures Page.

Link Activities and Measures

In this section, you can link a performance measure to additional categories and activities. For example, you may want to add the "# of jobs created" measure to Category: Education, Activity: Alternative Schools. In the Add a Benchmark or Secondary Outputs sections, a community may choose a performance measure that is not currently linked to the Activity and Category they have selected (from the View More Measures list). Once they submit this choice, a link is automatically created between that measure and the new activity and category.

Select a Category and Activity from the drop down lists. You will then see a list of the measures that are currently linked. If you do not see the measure you want, select it from the drop down list of all measures. Click on the gray "Link Activity and Measure" button. You must do the last step to save your change.

Sources and Agencies

These items can be edited in the same way as categories, activities and measures.

Community Information

Use this section to keep community contact information current or to add new communities. Each community must be linked to at least one state. Each community should be identified by a community type. There should be only one main email contact for each community, inform your Desk Officer if your email address changes.

Community Types

Use this section to add new community types or to edit existing ones.

State Office Information

Enter the name of the USDA Rural Development coordinator in this section. It is important that these names and email addresses are kept current, because the Benchmark Management System will send notification of benchmark changes to this individual.

Appendix A

EZ/EC Benchmark Review & Approval Process

The USDA review and approval process for benchmarks has been updated to incorporate the Benchmark Management System. The automatic email notification replaces the requirement for communities and USDA State Offices to submit paper copies of benchmarks. However, in order for the system to work effectively the email addresses in the Benchmark Management System must remain current. There should be one main contact for Empowerment Initiative Communities at each USDA State Office who will receive the email notifications. OCD must be informed immediately of personnel changes at the USDA State Office level. Changes should be sent to: benchmark@ocdx.usda.gov to the attention of the System Administrator.

NOTE: Review & Approval Letter is a separate document.

Appendix B

Training Housing Benchmark Part I Setting Up the Benchmark Structure

Items to Notice in the Benchmark

- The benchmark description, goal, and problem are focused, feasible and measurable.
- The unit of measurement directly correlates with the problem identified and the goal that is outlined.
- The funding section clearly identifies each source of funding that will be applied for and the amount.
- The notes section provides relevant information about the status of this benchmark
- The benchmark utilizes secondary measurements to capture all the benefits that will occur as a result of this benchmark.
- Each task has a specific task leader, proposed budget, start date and end date.

Main Section of a Benchmark

Community: Training Housing Benchmark EC - 1					EDIT
Main	Tasks	Funding and Assistance	Secondary Outputs	View All	DELETE
Problem: Lack of affordable single family housing					Page: 42-45
Goal/Objective: Construct 12 new single family houses and rehabilitate 10 houses over the next two years to assist low-income families in the EC area.					
Benchmark Description: Construct 12 affordable single family houses and assist families to move into these homes and rehabilitate 10 houses over the next two years.					
Category: Housing			Activity: Single Family		
Unit of Measurement: # of houses constructed			Source of Data: Local Housing Authority		
Baseline: 0		Output To Date: 0		Target: 12	
Percent Complete: 0%					
Last Updated: 8/24/99			Updated By: OCD		
Status: Under Review			This benchmark is active.		

Tasks Section

Tasks and Projects									
Training Housing Benchmark EC - 1									
Main	Tasks	Funding and Assistance	Secondary Outputs	View All					
Benchmark Leader: Housing Subcommittee									
Task	Task Description	Task Leader	Start Date	End Date	Budget	Task Done			
A	Identify land for construction	Mark Asbrey of Housing Subcommittee	1/15/98	3/15/98	\$500		Edit	Delete	
B	Seek grants for housing construction	Paul Skorshod of Housing Subcommittee	1/15/98	12/15/98	\$5,000		Edit	Delete	

C	Acquire Land for construction	Kristie Lokken of Housing Subcommittee	3/16/98	6/15/98	\$200,000		Edit	Delete
D	Establish construction plans and hire contractors	Steve Andersen of Housing Subcommittee	6/15/98	8/15/98	\$1,000		Edit	Delete
E	Inform the public about the program and establish selection criteria for housing rehabilitation applicants	Lauren Helms of Housing Subcommittee	3/15/98	5/15/98	\$0		Edit	Delete
F	Select the ten housing applicants for rehabilitation	Housing Subcommittee	6/1/98	6/10/98	\$0		Edit	Delete
G	Begin construction of new houses	Housing Subcommittee	7/10/98	9/1/99	\$700,000		Edit	Delete
H	Begin rehabilitation of ten houses	Bob Vela of Housing Subcommittee	6/15/98	6/15/99	\$150,000		Edit	Delete
I	Create application process for families seeking to purchase new homes	Lauren Helms of Housing Subcommittee	4/15/99	6/15/99	\$0		Edit	Delete
J	Notify families selected for home purchasing program	Kristie Lokken of Housing Subcommittee	6/16/99	6/16/99	\$0		Edit	Delete
K	Develop and implement home educational and ownership program	Mark Asbrey of Housing Subcommittee	6/15/99	7/15/99	\$2,500		Edit	Delete
L	Acquire funds to assist home buyers	Angela Hayes of Housing Subcommittee	6/16/99	7/30/99	\$2,000		Edit	Delete
M	Qualify home purchasers and arrange financing, close on homes	Erik Samuelson of Housing Subcommittee	7/1/99	8/30/99	\$10,000		Edit	Delete
Total Budget:					\$1,063,082			
			Help on Tasks					

Funding and Assistance Section

Funding and Assistance						
Training Housing Benchmark EC - 1						
Main	Tasks	Funding and Assistance	Secondary Outputs	View All		
Funding						
Partner	Agency	Program	Funds Received	Funds Requested		
SSBG from designation	HHS	EZ/EC	\$50,000	\$100,000	Edit	Delete
Federal government	USDA Rural Development	504	\$0	\$250,000	Edit	Delete
Non-profit	Neighborhood Reinvestment Corp.	Home Owner Rehabilitation Grants	\$0	\$12,000	Edit	Delete
Private sector	Wal-mart	Community grants	\$0	\$1,000	Edit	Delete
State government	Dept. of Commerce	Housing Assistance Program (HAP)	\$0	\$20,745	Edit	Delete
Federal government	USDA Rural Development	Housing Preservation Grant	\$0	\$75,000	Edit	Delete
Non-profit	Presbyterian Church	One great hour of sharing	\$0	\$5,000	Edit	Delete
Private sector	Regional Banks	Community Development and Outreach (low-interest housing loans)	\$0	\$600,000	Edit	Delete
Non-profit	Housing Assistance Council	We Build	\$0	\$30,000	Edit	Delete
Local or regional government	Local and county government	Housing Operation	\$50,000	\$50,000	Edit	Delete
		Totals:	\$100,000	\$1,143,745		
			Help on Funding			

In-Kind and Technical Assistance

In-Kind and Technical Assistance					
Sources/Partner/ Volunteers	Type of Contribution	Quantity			
Habitat for Humanity	20 volunteers for 8 Saturdays (160 days of assistance)	160	Edit	Delete	
The ten homeowners selected for housing rehabilitation	Sweat Equity of 250 hours (10 homeowners for 250 hours)	2500	Edit	Delete	
A real estate agent will provide a seminar to the ten potential home buyers on the process of purchasing a home	One free seminar for ten participants	1	Edit	Delete	
A local financial planner is going to provide a free seminar on creating household budgets, keeping good credit, and ways to curb debt	one free seminar for ten people	1	Edit	Delete	
			Help on Assistance		

Secondary Outputs Section

Secondary Outputs					
Training Housing Benchmark EC - 1					
Main	Tasks	Funding and Assistance	Secondary Outputs	View All	
Category	Type of Activity	Output	Unit of Measurement		
Housing	Single Family	0	# of houses rehabilitated	Edit	Delete
Housing	Single Family	0	# of families served	Edit	Delete
			Help on Secondary Outputs		

Notes Section

Notes
The grant writing process has already begun, and we are still looking for more potential funding agencies. Discussions have begun with regional banks to arrange low interest loans for the families that will become homeowners under this housing benchmark.

Training Housing Benchmark Part II Updating the Benchmark Changes to Notice in the Updated Benchmark

- The output to date and secondary outputs have been updated to show the progress that has taken place.
- Tasks that are completed have budgets that show exact costs and the task has been checked off as completed.
- The notes section documents relevant information about the current status of the benchmark.
- As grants were applied for and received they were documented under the funding section.

Main Benchmark Section

Community: Training Housing Benchmark EC - 1 (Part II Updated Benchmark Six Months Down the Road)					EDIT
Main	Tasks	Funding and Assistance	Secondary Outputs	View All	DELETE
Problem: Lack of affordable single family housing					Page: 42-45
Goal/Objective: Construct 12 new single family houses and rehabilitate 10 houses over the next two years to assist low-income families in the EC area.					
Benchmark Description: Construct 12 affordable single family houses and assist families to move into these homes and rehabilitate 10 houses over the next two years.					
Category: Housing			Activity: Single Family		
Unit of Measurement: # of houses constructed			Source of Data: Local Housing Authority		
Baseline: 0		Output To Date: 4		Target: 12	
Percent Complete: 33%					
Last Updated: 8/24/99			Updated By: OCD		
Status: Under Review			This benchmark is active.		

Tasks Section

Tasks and Projects									
Training Housing Benchmark (Six Months Down the Road) EC - 1									
Main	Tasks	Funding and Assistance	Secondary Outputs	View All					
Benchmark Leader: Housing Subcommittee									
Task	Task Description	Task Leader	Start Date	End Date	Budget	Task Done			
A	Identify land for construction	Mark Asbrey of Housing Subcommittee	1/15/98	3/15/98	\$432	X	Edit	Delete	
B	Seek grants for housing construction	Paul Skorshod of Housing Subcommittee	1/15/98	12/15/98	\$7,400	X	Edit	Delete	
C	Acquire Land for construction	Kristie Lokken of Housing Subcommittee	3/16/98	6/15/98	\$188,000	X	Edit	Delete	

D	Establish construction plans and hire contractors	Steve Andersen of Housing Subcommittee	6/15/98	8/15/98	\$2,650	X	Edit	Delete
E	Inform the public about the program and establish selection criteria for housing rehabilitation applicants	Lauren Helms of Housing Subcommittee	3/15/98	5/15/98	\$100	X	Edit	Delete
F	Select the ten housing applicants for rehabilitation	Housing Subcommittee	6/1/98	6/10/98	\$0	X	Edit	Delete
G	Begin construction of new houses	Housing Subcommittee	7/10/98	9/1/99	\$700,000		Edit	Delete
H	Begin rehabilitation of ten houses	Bob Vela of Housing Subcommittee	6/15/98	6/15/99	\$150,000		Edit	Delete
I	Create application process for families seeking to purchase new homes	Lauren Helms of Housing Subcommittee	4/15/99	6/15/99	\$0		Edit	Delete
J	Notify families selected for home purchasing program	Kristie Lokken of Housing Subcommittee	6/16/99	6/16/99	\$0		Edit	Delete
K	Develop and implement educational home ownership program	Mark Asbrey of Housing Subcommittee	6/15/99	7/15/99	\$2,500		Edit	Delete
L	Acquire funds to assist home buyers	Angela Hayes of Housing Subcommittee	6/16/99	7/30/99	\$2,000		Edit	Delete
M	Qualify home purchasers and arrange financing, close on homes	Erik Samuelson of Housing Subcommittee	7/1/99	8/30/99	\$10,000		Edit	Delete
Total Budget:					\$1,063,082			
			Help on Tasks					

Funding Section

Funding and Assistance						
Training Housing Benchmark (Six Months Down the Road) EC - 1						
Main	Tasks	Funding and Assistance	Secondary Outputs	View All		
Funding						
Partner	Agency	Program	Funds Received	Funds Requested		
SSBG from designation	HHS	EZ/EC	\$50,000	\$100,000	Edit	Delete
Federal government	USDA Rural Development	504	\$250,000	\$250,000	Edit	Delete
Non-profit	Neighborhood Reinvestment Corp.	Home Owner Rehabilitation Grants	\$0	\$12,000	Edit	Delete
Private sector	Wal-mart	Community grants	\$1,000	\$1,000	Edit	Delete
State government	Dept. of Commerce	Housing Assistance Program (HAP)	\$20,745	\$20,745	Edit	Delete
Federal government	USDA Rural Development	Housing Preservation Grant	\$75,000	\$75,000	Edit	Delete
Non-profit	Presbyterian Church	One great hour of sharing	\$5,000	\$5,000	Edit	Delete
Private sector	Regional Banks	Community Development and Outreach (low-interest housing loans)	\$600,000	\$600,000	Edit	Delete
Non-profit	Housing Assistance Council	We Build	\$15,000	\$30,000	Edit	Delete
Local or regional government	Local and county government	Housing Operation	\$50,000	\$50,000	Edit	Delete
		Totals:	\$1,066,745	\$1,143,745		
			Help on Funding			

In-Kind and Assistance Section

In-Kind and Technical Assistance					
Sources/Partner/Volunteers	Type of Contribution	Quantity			
Habitat for Humanity	20 volunteers for 8 Saturdays (160 days of assistance)	160	Edit	Delete	
The ten homeowners selected for housing rehabilitation	Sweat Equity of 250 hours (10 homeowners for 250 hours)	2500	Edit	Delete	
A real estate agent will provide a seminar to the ten potential home buyers on the process of purchasing a home	One free seminar for ten participants	1	Edit	Delete	
A local financial planner is going to provide a free seminar on creating household budgets, keeping good credit, and ways to curb debt	one free seminar for ten people	1	Edit	Delete	
Illinois State University	One construction planner gave 60 hours of his time	60	Edit	Delete	
			Help on Assistance		

Secondary Outputs Section

Secondary Outputs					
Training Housing Benchmark (Six Months Down the Road) EC - 1					
<u>Main</u>	<u>Tasks</u>	<u>Funding and Assistance</u>	<u>Secondary Outputs</u>	<u>View All</u>	
Category	Type of Activity	Output	Unit of Measurement		
Housing	Single Family	3	# of houses rehabilitated	Edit	Delete
Housing	Single Family	3	# of families served	Edit	Delete
			Help on Secondary Outputs		

Notes Section

Notes
<p>Three houses have been rehabilitated so far and construction on four houses has been completed. The cost of planning was reduced due to in-kind assistance from a construction planner from Illinois State University, his contribution is valued at \$3000. Discussions with regional banks were successful and an agreement has been signed with the EC to provide low interest loans for this housing benchmark. The nonprofit organization Housing Assistance Council has provided \$15,000 of the \$30,000 requested, they stated that after progress reports are delivered for the first grant they will consider funding a second grant for \$15,000. The housing subcommittee is considering a "We Are Halfway There Celebration" after the sixth house is constructed and the rehabilitation of the fifth house has been completed. Arrangements are being made with the local community center.</p>