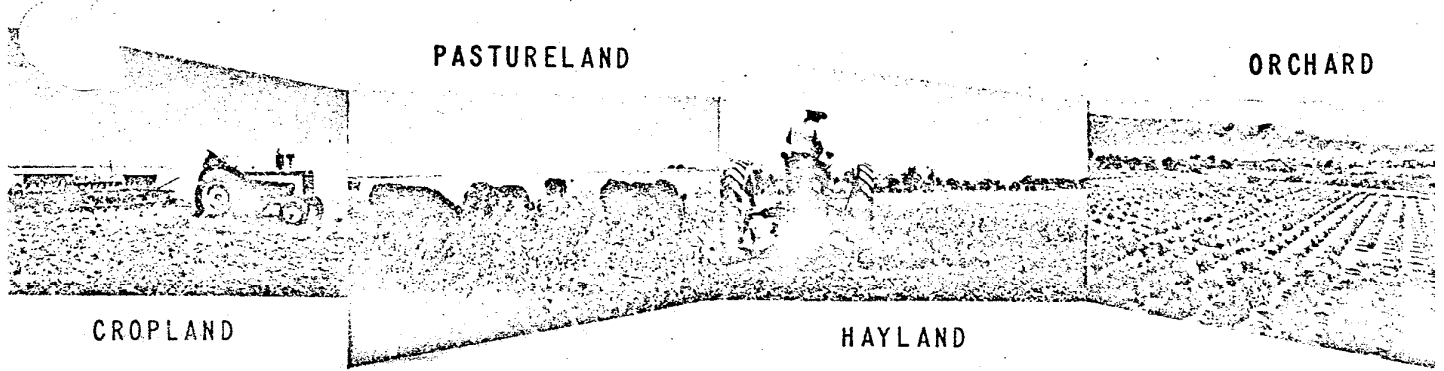


# CONSERVATION AGRONOMY TECHNICAL NOTES



U. S. DEPARTMENT OF AGRICULTURE

NEW MEXICO

SOIL CONSERVATION SERVICE

NOTE NO. 18

January 10, 1972

RE: Convenient Conversion Factors

The attached Agronomy Technical Note contains some convenient conversion factors. Many of these should be useful as we rush headlong toward adopting the metric system.

The metric system was adopted by France around 1840. England has adopted the system. Canada and Australia have decided they will also go to this system. About 75 per cent of the world's trade is carried on in metric measurements.

Attachment

AO  
Regional Agronomist, Portland  
NMSO Records Mgt - 1

CONVENIENT CONVERSION FACTORS

<u>Multiply</u>	<u>By</u>	<u>To Get</u>
Acres	43,560	Square Feet
Acres	4,840	Square Yards
Acres	2.4711	Hectares
Acres	5,645.376	Square Varas
Barrels	7.056	Cubic Inches Dry Commodities
Barrels	105	Quarts (Dry)
Board Feet	144	Cubic Inches
Bushels	2,150.42	Cubic Inches
Bushels	4	Pecks
Bushels	64	Pints
Bushels	32	Quarts
Bushels	1.244	Cubic Feet
Centimeters	0.3937	Inches
Centimeters	0.01	Meters
Centimeters	10	Millimeters
Cords	128	Cubic Feet
Cubic Feet	1,728	Cubic Inches
Cubic Feet	0.03704	Cubic Yards
Cubic Feet	7.4805	Gallons
Cubic Feet	59.84	Pints (Liquid)
Cubic Feet	29.92	Quarts (Liquid)
Cubic Inches	16.39	Cubic Centimeters

<u>Multiply</u>	<u>By</u>	<u>To Get</u>
Cubic Meters	1,000,000	Cubic Centimeters
Cubic Meters	35.31	Cubic Feet
Cubic Meters	61,023	Cubic Inches
Cubic Meters	1.308	Cubic Yards
Cubic Meters	264.2	Gallons
Cubic Meters	2,113	Pints (Liquid)
Cubic Meters	1,057	Quarts (Liquid)
Cubic Yards	27	Cubic Feet
Cubic Yards	46,656	Cubic Inches
Cubic Yards	0.7646	Cubic Meters
Cubic Yards	202	Gallons
Cubic <sup>3</sup> Yards	1,616	Pints (Liquid)
Cubic Yards	807.9	Quarts (Liquid)
Feet	30.48	Centimeters
Feet	12	Inches
Feet	0.3048	Meters
Feet	1/3 or 0.33333	Yards
Feet Per Minute	0.01667	Feet Per Second
Feet Per Minute	0.01136	Miles Per Hour
Gallons	3,785	Cubic Centimeters
Gallons	0.1337	Cubic Feet
Gallons	231	Cubic Inches
Gallons	128	Ounces (Liquid)
Gallons	8	Pints (Liquid)
Gallons	4	Quarts (Liquid)

<u>Multiply</u>	<u>By</u>	<u>To Get</u>
Gallons	3.7854	Liters
Gallons of Water	8.3453	Pounds of Water
Gallons of Milk	8.6	Pounds of Milk
Gallons of Cream	8.4	Pounds of Cream
Gills	4	Pints
Grains	0.0648	Grams
Grams	15.43	Grains
Grams	0.001	Kilo Grams
Grams	1,000	Milligrams
Grams	0.0353	Ounces
Grams Per Liter	1,000	Parts Per Million
Hectares	0.4047	Acres
Inches	2.54	Centimeters
Inches	0.08333	Feet
Inches	0.02778	Yards
Kilograms	1,000	Grams
Kilograms	2.205	Pounds
Kilometers	3,281	Feet
Kilometers	1,000	Meters
Kilometers	0.6214	Miles
Kilometers	1,094	Yards
K	1.2	K20
K20	0.83	K
Liters	1,000	Cubic Centimeters

<u>Multiply</u>	<u>By</u>	<u>To Get</u>
Liters	0.0353	Cubic Feet
Liters	61.02	Cubic Inches
Liters	0.001	Cubic Inches
Liters	0.2642	Gallons
Liters	2.113	Pints (Liquid)
Liters	1.057	Quarts (Liquid)
Meters	100	Centimeters
Meters	3.281	Feet
Meters	39.37	Inches
Meters	0.001	Kilometers
Meters	1,000	Millimeters
Meters	1.094	Yards
Miles	5,280	Feet
Miles	320	Rods
Miles	1760	Yards
Miles	3	Leagues
Miles Per Hour	88	Feet Per Minute
Miles Per Hour	1.467	Feet Per Second
Miles Per Minute	88	Feet Per Second
Miles Per Minute	60	Miles Per Hour
Ounces (Dry)	437.5	Grains
Ounces (Dry)	28.3495	Grams
Ounces (Dry)	0.0625	Pounds
Ounces (Liquid)	1.805	Cubic Inches

<u>Multiply</u>	<u>By</u>	<u>To Get</u>
Ounces (Liquid)	0.0078125	Gallons
Ounces (Liquid)	29.573	Milliliters (Cubic Centimeters)
Ounces (Liquid)	0.0625	Pints (Liquid)
Ounces (Liquid)	0.03125	Quarts (Liquid)
Parts Per Million	0.0584	Grains Per U.S. Gallon
Parts Per Million	0.001	Grams Per Liter
Parts Per Million	8.345	Pounds Per Million Gallons
Pecks	0.25	Bushels
Pecks	537.605	Cubic Inches
Pecks	16	Pints (Dry)
Pecks	8	Quarts (Dry)
Phosphorus	2.3	P <sub>2</sub> O <sub>5</sub>
P <sub>2</sub> O <sub>5</sub>	0.44	Phosphorus
Pints (Dry)	0.015625	Bushels
Pints (Dry)	33.6003	Cubic Inches
Pints (Dry)	0.0625	Pecks
Pints (Dry)	0.5	Quarts (Dry)
Pints (Liquid)	28.875	Cubic Inches
Pints (Liquid)	0.125	Gallons
Pints (Liquid)	0.4732	Liters
Pints (Liquid)	16	Ounces (Liquid)
Pints (Liquid)	0.5	Quarts (Liquid)
Potassium	1.2	K <sub>2</sub> O

<u>Multiply</u>	<u>By</u>	<u>To Get</u>
K <sub>2</sub> O	0.83	K (Potassium)
Pounds	7,000	Grains
Pounds	453.5924	Grams
Pounds	16	Ounces
Pounds	0.0005	Tons
Pounds	0.4536	Kilograms
Pounds of Water	0.01602	Cubic Feet
Pounds of Water	27.68	Cubic Inches
Pounds of Water	0.1198	Gallons
Quarts (Dry)	0.03125	Bushels
Quarts (Dry)	67.20	Cubic Inches
Quarts (Dry)	0.125	Pecks
Quarts (Dry)	2	Pints (Dry)
Quarts (Liquid)	57.75	Cubic Inches
Quarts (Liquid)	0.25	Gallons
Quarts (Liquid)	0.9463	Liters
Quarts (Liquid)	32	Ounces (Liquid)
Quarts (Liquid)	2	Pints (Liquid)
Rods	16.5	Feet
Square Feet	144	Square Inches
Square Feet	0.11111	Square Yards
Square Feet	0.000023	Acres
Square Inches	0.00694	Square Feet
Square Miles	640	Acres

<u>Multiply</u>	<u>By</u>	<u>To Get</u>
Square Miles	28,878,400	Square Feet
Square Miles	3,097,600	Square Yards
Square Yards	0.0002066	Acres
Square Yards	9	Square Feet
Square Yards	1,296	Square Inches
Square Rods	30.25	Square Yards
Temperature ( $^{\circ}$ C) + 17.98	1.8	Temperature $^{\circ}$ F
Temperature ( $^{\circ}$ F) - 32	5/9 or 0.5555	Temperature $^{\circ}$ C
Ton	907.1849	Kilograms
Ton	32,000	Ounces
Ton	2,000	Pounds
Yards	3	Feet
Yards	36	Inches
Yards	0.9144	Meters
Yards	0.000568	Miles
Yards	5.5	Rods