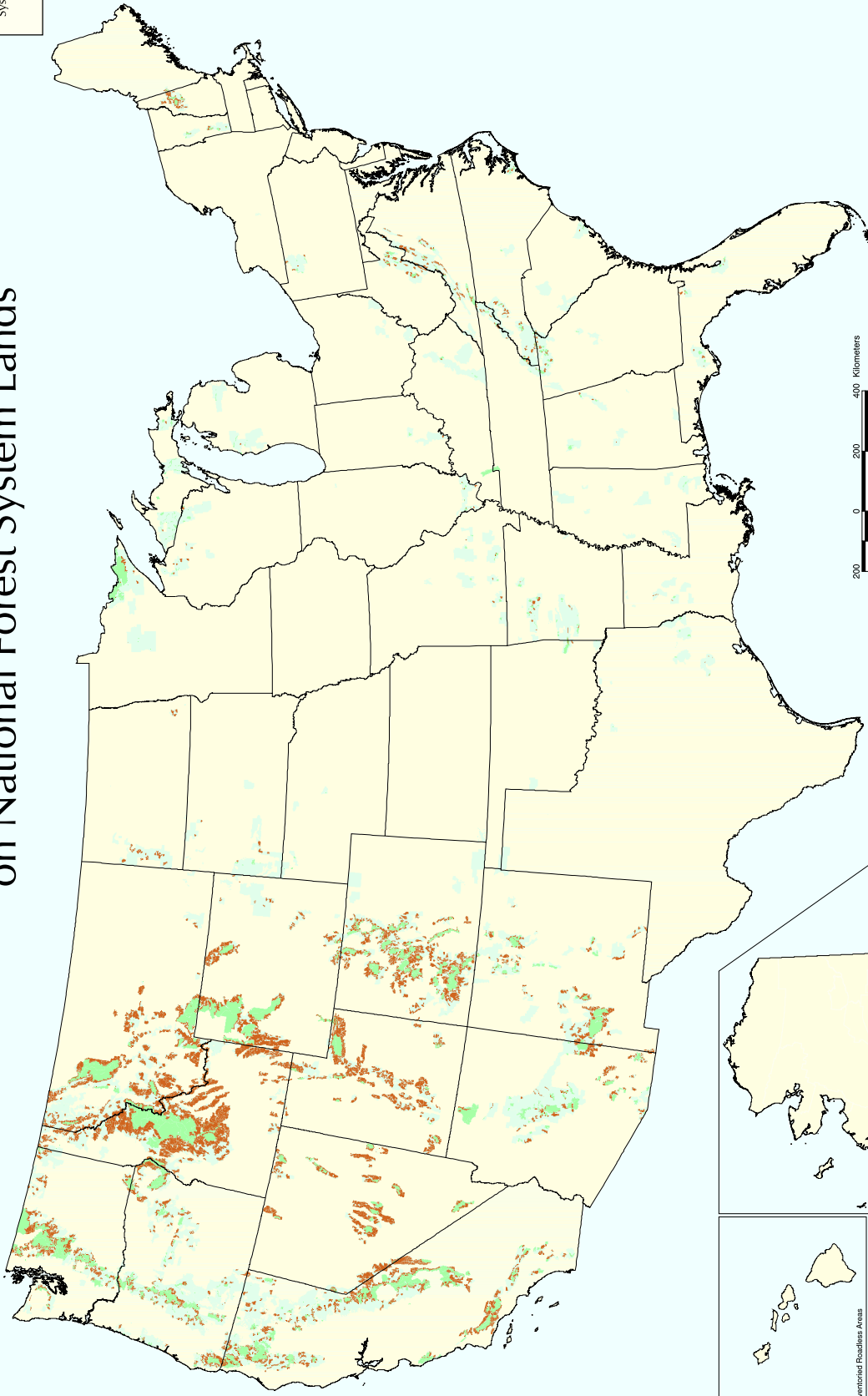
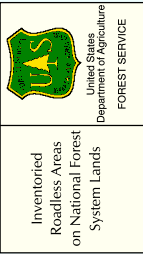
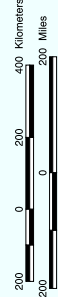


Inventoried Roadless Areas on National Forest System Lands



LEGEND

- Inventoried Roadless Areas
- Designated Areas outside of Inventoried Roadless Areas
- National Forest System land outside of Inventoried Roadless Areas - not all private land is shown on the map



Credits:
 Data supplied by individual National Forests and Grasslands.
 For further information, contact individual National Forest System land managers or visit the Forest Service website at www.fs.fed.us.
 Created November 6, 2009
 Corrected November 2, 2009
 Authors: Project Team
 Authors: Project Team

Corrections to this map have been made to remove NEA East and West, Sawtooth NEA, and Square Creek NEA, and to correct the boundary between NEA East and West and the Roadless Rule.
 The USDA Forest Service uses the most current and available data for its products. The USDA Forest Service reserves the right to update this map at any time without notification.

Hawaii No Inventoried Roadless Areas

Alaska

Puerto Rico

Scale bars for Kilometers (0, 200, 400) and Miles (0, 200) are provided for each inset map.