

Table XX-1
OVARY CANCER (Invasive)

TRENDS IN SEER INCIDENCE^a AND U.S. MORTALITY^b USING THE JOINPOINT REGRESSION PROGRAM, 1975-2000
WITH UP TO THREE JOINPOINTS BY RACE AND AGE

		<u>Joinpoint Segment 1</u>		<u>Joinpoint Segment 2</u>		<u>Joinpoint Segment 3</u>		<u>Joinpoint Segment 4</u>	
		Year	APC	Year	APC	Year	APC	Year	APC
<u>SEER Cancer Incidence^a</u>									
All Races	All Ages	1975-1986	0.0	1986-1989	4.7	1989-2000	-0.7 ^c		
All Races	Under 65	1975-1986	-1.0 ^c	1986-1989	5.3	1989-2000	-0.6 ^c		
All Races	65 and Over	1975-1991	1.7 ^c	1991-2000	-1.1 ^c				
White	All Ages	1975-1986	0.1	1986-1989	4.9	1989-2000	-0.7 ^c		
White	Under 65	1975-1986	-0.8 ^c	1986-1989	5.5	1989-2000	-0.6		
White	65 and Over	1975-1991	1.8 ^c	1991-2000	-0.9				
Black	All Ages	1975-2000	0.4						
Black	Under 65	1975-2000	-0.3						
Black	65 and Over	1975-2000	1.0 ^c						
<u>SEER Delay-Adjusted Incidence^a</u>									
White	All Ages	1975-1986	0.1	1986-1989	4.8	1989-2000	-0.4		
Black	All Ages	1975-2000	0.5 ^c						
<u>U.S. Cancer Mortality^b</u>									
All Races	All Ages	1975-1983	-1.1 ^c	1983-1991	0.5	1991-2000	-0.8 ^c		
All Races	Under 65	1975-1980	-3.3 ^c	1980-2000	-1.5 ^c				
All Races	65 and Over	1975-1985	0.7 ^c	1985-1991	1.9 ^c	1991-2000	-0.3		
White	All Ages	1975-1981	-1.5 ^c	1981-1991	0.3	1991-2000	-0.7 ^c		
White	Under 65	1975-1980	-3.3 ^c	1980-2000	-1.4 ^c				
White	65 and Over	1975-1984	0.5 ^c	1984-1991	1.7 ^c	1991-2000	-0.1		
Black	All Ages	1975-1992	0.4 ^c	1992-2000	-1.0				
Black	Under 65	1975-2000	-1.7 ^c						
Black	65 and Over	1975-1992	2.3 ^c	1992-2000	-1.2				

The APC is the Annual Percent Change based on rates age-adjusted to the 2000 U.S. standard population by 5-year age groups using the Joinpoint Regression Program.

^a Trends are from the SEER 9 areas.

^b Trends are from the NCHS public use data file.

^c The APC is significantly different from zero (p<.05).

Table XX-2
OVARY CANCER (Invasive)

SEER INCIDENCE^a AND U.S. DEATH^b RATES, AGE-ADJUSTED AND AGE-SPECIFIC RATES, BY RACE

	Incidence ^a			US Death ^b		
	All Races, Females	White Females	Black Females	All Races, Females	White Females	Black Females
<u>AGE-SPECIFIC RATES, 1996-2000</u>						
AGE AT DIAGNOSIS/DEATH:						
<1	-	-	-	-	-	-
1-4	-	-	-	-	-	-
5-9	-	-	-	-	-	-
10-14	0.8	0.7	-	-	-	-
15-19	1.9	1.9	-	0.1	-	-
20-24	3.2	3.3	-	0.2	0.2	-
25-29	4.2	4.4	-	0.3	0.3	0.4
30-34	6.1	6.5	3.6	0.7	0.7	0.7
35-39	8.1	8.8	4.5	1.3	1.3	1.3
40-44	13.9	14.5	8.9	3.0	3.1	2.8
45-49	21.5	22.6	13.8	6.2	6.5	4.6
50-54	30.0	32.9	16.2	10.7	11.2	8.6
55-59	35.7	38.3	23.1	16.3	17.1	12.5
60-64	43.9	46.8	28.7	23.7	24.9	19.2
65-69	50.5	54.6	36.1	31.6	32.5	29.1
70-74	58.8	62.5	51.5	40.9	41.9	38.0
75-79	60.5	63.2	51.0	49.9	51.4	41.7
80-84	60.0	62.8	54.5	55.9	57.6	42.7
85+	52.4	54.4	42.4	55.0	56.4	44.3
<u>AGE-ADJUSTED RATES, 1996-2000</u>						
AGE AT DIAGNOSIS/DEATH:						
All ages	16.9	18.0	11.9	8.8	9.1	7.4
Under 65	11.2	11.9	6.9	3.7	3.9	3.0
65 and over	56.3	59.6	46.5	44.1	45.4	37.8
All ages (world std.) ^c	12.4	13.2	8.4	5.7	5.9	4.8

^a SEER 9 areas. Rates are per 100,000 and are age-adjusted to the 2000 U.S. standard population by 5-year age groups, unless noted.

^b NCHS public use data file. Rates are per 100,000 and are age-adjusted to the 2000 U.S. standard population by 5-year age groups, unless noted.

^c Rates are per 100,000 and are age-adjusted to the world standard population.

- Statistic not shown. Rate based on less than 25 cases for the time interval.

Table XX-3
OVARY CANCER (Invasive)

SEER INCIDENCE^a AND U.S. DEATH^b RATES, AGE-ADJUSTED RATES, BY RACE AND AGE

	All Races, Females			White Females			Black Females		
	All	<65	65+	All	<65	65+	All	<65	65+
<u>SEER INCIDENCE RATES</u>									
YEAR OF DIAGNOSIS:									
1975	16.3	11.6	48.9	16.8	12.0	49.8	11.7	7.4	41.6
1976	15.9	11.2	47.8	16.6	11.9	49.5	11.4	7.4	39.3
1977	15.6	11.2	46.2	16.2	11.6	48.0	11.2	8.6	-
1978	15.4	10.8	47.2	16.1	11.4	49.3	10.0	6.1	36.8
1979	15.4	10.7	47.9	15.8	10.9	50.0	11.9	9.1	31.8
1980	15.4	10.6	48.6	16.2	11.2	50.9	11.7	7.4	41.6
1981	15.4	10.5	49.5	16.0	10.9	51.5	11.5	7.4	40.1
1982	15.6	10.1	53.4	16.1	10.5	55.1	12.3	7.4	46.2
1983	16.0	10.4	54.3	16.4	10.7	55.9	13.1	9.2	39.9
1984	16.3	11.0	53.0	17.2	11.7	54.8	10.9	5.7	47.1
1985	16.5	10.8	56.3	17.4	11.4	59.1	11.3	7.3	39.3
1986	15.0	9.9	50.4	15.7	10.5	51.7	10.7	6.3	41.5
1987	16.1	10.1	57.5	17.0	10.8	59.7	11.8	6.3	50.3
1988	17.3	11.4	57.9	18.1	12.0	60.3	12.8	7.6	48.4
1989	17.9	11.8	60.0	19.0	12.7	63.1	12.5	7.0	50.9
1990	17.8	11.6	60.5	18.8	12.4	62.9	12.1	6.8	48.6
1991	18.1	11.9	60.9	19.1	12.7	63.3	12.0	6.4	50.4
1992	17.6	11.8	58.0	18.6	12.3	61.6	12.3	8.6	37.6
1993	17.7	11.5	60.6	18.6	12.1	63.7	13.1	8.0	48.6
1994	17.0	11.4	56.3	17.6	11.7	58.6	14.8	8.7	57.4
1995	17.4	11.4	58.4	18.4	12.3	60.9	12.0	6.8	47.6
1996	17.0	11.0	57.9	18.4	12.1	61.5	10.6	5.8	43.8
1997	17.4	11.8	55.9	18.3	12.6	58.1	12.3	7.0	48.5
1998	16.7	10.9	56.8	17.6	11.5	60.0	12.5	7.4	47.9
1999	17.1	11.1	58.9	18.2	11.6	63.4	12.2	7.3	45.7
2000	16.3	11.1	51.9	17.3	11.9	54.9	12.1	7.0	46.8
1996-2000	16.9	11.2	56.3	18.0	11.9	59.6	11.9	6.9	46.5
<u>U.S. DEATH RATES</u>									
YEAR OF DEATH:									
1975	9.8	5.8	37.5	10.2	6.0	38.8	7.2	4.6	24.6
1976	10.0	5.7	39.7	10.3	5.9	40.6	8.0	4.6	31.5
1977	9.6	5.5	38.0	9.9	5.6	39.1	7.4	4.3	29.2
1978	9.6	5.4	38.0	9.8	5.6	38.9	7.4	4.2	29.3
1979	9.3	5.1	38.6	9.6	5.2	39.7	7.5	4.4	28.9
1980	9.3	5.0	39.1	9.5	5.1	40.0	7.9	4.2	33.2
1981	9.2	4.9	38.9	9.5	5.1	39.8	7.4	3.7	32.4
1982	9.2	4.8	39.8	9.5	5.0	40.7	7.4	3.6	33.5
1983	9.2	4.7	40.3	9.4	4.8	41.4	7.7	4.1	32.3
1984	9.1	4.6	40.1	9.4	4.8	40.9	7.6	3.8	33.8
1985	9.1	4.6	40.2	9.3	4.7	41.3	7.3	3.7	31.9
1986	9.2	4.6	41.6	9.5	4.7	42.6	7.4	3.7	33.4
1987	9.2	4.5	41.9	9.5	4.6	42.8	7.6	3.5	35.5
1988	9.3	4.4	43.2	9.6	4.6	44.1	7.9	3.7	36.9
1989	9.2	4.3	43.2	9.5	4.5	44.3	7.4	3.3	36.2
1990	9.3	4.3	44.4	9.6	4.5	45.2	7.9	3.3	39.2
1991	9.5	4.3	45.4	9.7	4.5	46.1	8.4	3.4	42.5
1992	9.5	4.2	45.5	9.7	4.4	46.5	8.2	3.6	40.0
1993	9.1	4.0	44.1	9.3	4.2	44.9	7.7	3.0	40.4
1994	9.4	4.1	45.6	9.7	4.3	46.7	7.8	3.2	39.7
1995	9.1	4.0	44.8	9.5	4.2	46.1	7.4	2.9	38.0
1996	8.9	3.8	43.7	9.1	4.0	44.8	7.3	2.9	37.9
1997	8.9	3.8	44.7	9.2	3.9	45.6	7.9	3.1	41.2
1998	8.7	3.7	43.6	9.0	3.8	45.0	7.4	3.2	36.1
1999	8.8	3.7	43.6	9.1	3.9	44.8	7.4	3.1	37.3
2000	8.9	3.7	45.1	9.3	3.9	46.6	7.2	2.9	36.7
1996-2000	8.8	3.7	44.1	9.1	3.9	45.4	7.4	3.0	37.8

^a SEER 9 areas. Rates are per 100,000 and are age-adjusted to the 2000 U.S. standard population by 5-year age groups, unless noted.

^b NCHS public use data file. Rates are per 100,000 and are age-adjusted to the world standard population.

- Statistic not shown. Rate based on less than 25 cases for the time interval.

Table XX-4
OVARY CANCER (Invasive)

SURVIVAL RATES, BY RACE, DIAGNOSIS YEAR, STAGE AND AGE

	<u>All Races, Females</u>			<u>White Females</u>			<u>Black Females</u>		
	<u>All</u>	<u><65</u>	<u>65+</u>	<u>All</u>	<u><65</u>	<u>65+</u>	<u>All</u>	<u><65</u>	<u>65+</u>
<u>5-YR RELATIVE SURVIVAL RATES</u>									
YEAR OF DIAGNOSIS:									
1960-1963 ^a	-	-	-	32	-	-	32	-	-
1970-1973 ^a	-	-	-	36	-	-	32	-	-
1974-1976 ^b	36.9	43.1	23.8	36.6	42.8	23.5	41.2	44.9	33.2 ^d
1977-1979 ^b	38.5	46.7	22.3	37.9	46.0	22.7	39.8	49.1	10.1
1980-1982 ^b	39.1	48.3	23.5	38.7	48.2	23.5	39.1	46.7	22.8 ^d
1983-1985 ^b	41.0	50.6	25.9	40.3	50.0	25.8	41.5	52.3	20.8
1986-1988 ^b	42.1	53.8	25.4	41.9	53.7	25.5	39.0	49.9	21.4
1989-1991 ^b	49.6	63.0	29.5	49.7	63.5	29.7	41.9	55.2	22.9
1992-1999 ^b	53.0 ^c	65.8	32.9	52.4 ^c	65.8	32.5	51.5 ^c	63.7	28.7 ^c
1992-1999 ^b									
ALL STAGES	53.0	65.8	32.9	52.4	65.8	32.5	51.5	63.7	28.7
LOCALIZED	94.7	95.4	92.6	94.8	95.4	93.1	92.5	94.2	84.7 ^d
REGIONAL	72.0	79.8	57.6	71.3	79.4	58.2	72.0 ^d	80.1 ^d	-
DISTANT	30.7	40.7	19.7	30.8	41.4	19.6	26.3	33.3	17.4
UNSTAGED	28.0	50.2	15.3	26.4	48.5	14.2	38.4 ^d	-	21.1 ^d

STAGE DISTRIBUTION (%) 1992-1999^b

ALL STAGES

Number of cases	15,199	8,551	6,648	13,145	7,195	5,950	1,016	611	405
Percent	100%	100%	100%	100%	100%	100%	100%	100%	100%
LOCALIZED	29	41	15	29	41	15	28	38	14
REGIONAL	6	7	5	6	6	5	8	10	5
DISTANT	59	50	70	60	50	71	56	48	68
UNSTAGED	6	3	9	6	3	9	8	4	13

5-YR RELATIVE SURVIVAL RATES, 1992-1999^b

AGE AT DIAGNOSIS:

<45	82.3	-	-	83.0	-	-	77.1	-	-
45-54	63.6	-	-	64.0	-	-	60.4	-	-
55-64	49.7	-	-	49.6	-	-	47.6	-	-
65-74	39.2	-	-	38.9	-	-	30.5	-	-
75+	24.5	-	-	24.3	-	-	26.1	-	-
Under 65	65.8	-	-	65.8	-	-	63.7	-	-
65 and over	32.9	-	-	32.5	-	-	28.7	-	-

- ^a Rates are based on End Results data from a series of hospital registries and one population-based registry.
^b Rates are from the SEER 9 areas. They are based on data from population-based registries in Connecticut, New Mexico, Utah, Iowa, Hawaii, Atlanta, Detroit, Seattle-Puget Sound and San Francisco-Oakland. Rates are based on follow-up of patients into 2000.
^c The difference in rates between 1974-1976 and 1992-1999 is statistically significant (p<.05).
^d The standard error of the survival rate is between 5 and 10 percentage points.
^e The standard error of the survival rate is greater than 10 percentage points.
- Statistic could not be calculated.

Table XX-5
OVARY CANCER (Invasive)

INCIDENCE, DEATH, AND SURVIVAL RATES^c

By Year of Diagnosis/Death

All Races, Females

Year of Diagnosis/Death

	1975- 1979	1980- 1984	1985	1986	1987	1988	1989	1990	1991	1992	1993	1994	1995	1996	1997	1998	1999	2000
Incidence																		
SEER ^a	15.7	15.7	16.5	15.0	16.1	17.3	17.9	17.8	18.1	17.6	17.7	17.0	17.4	17.0	17.4	16.7	17.1	16.3
Mortality																		
U.S. ^b	9.7	9.2	9.1	9.2	9.2	9.3	9.2	9.3	9.5	9.5	9.1	9.4	9.1	8.9	8.9	8.7	8.8	8.9
SEER ^a	9.9	9.1	9.3	9.6	9.2	9.8	9.5	9.0	9.5	9.4	9.4	9.7	8.5	8.5	8.9	8.5	8.8	9.1
Relative Survival Rates (SEER ^a)																		
1-year	65.1	70.6	72.2	69.2	71.0	73.2	75.6	76.2	76.5	79.0	76.5	76.4	78.1	78.9	80.9	79.4	78.2	
2-year	49.6	54.0	55.5	52.5	54.0	61.6	62.2	64.0	64.8	67.0	65.0	67.3	67.4	69.0	71.7	69.7		
3-year	42.9	46.7	48.1	46.3	46.5	55.0	54.7	56.9	57.0	59.5	57.0	61.2	60.2	61.6	64.2			
4-year	39.5	42.4	42.8	42.2	42.5	50.8	49.9	53.5	52.5	55.6	52.2	56.4	56.3	56.2				
5-year	37.6	40.1	39.9	38.6	39.1	47.9	47.6	51.1	50.0	52.4	48.9	54.4	53.4					
6-year	36.4	38.4	37.8	37.0	37.6	46.3	45.5	49.7	48.1	50.6	47.3	51.6						
7-year	35.4	37.8	36.3	35.9	37.0	45.6	44.6	48.8	46.6	49.4	46.8							
8-year	34.7	36.6	36.0	35.5	36.1	45.2	43.6	47.9	45.9	48.9								
9-year	34.4	35.9	35.0	35.1	35.8	44.7	43.6	47.6	45.4									
10-year	34.4	35.4	34.8	34.8	35.7	44.5	43.6	47.4										
11-year	34.2	35.3	34.8	34.8	35.7	44.2	43.5											
12-year	33.9	35.0	34.8	34.3	35.2	44.0												
13-year	33.9	34.7	34.8	34.3	34.9													
14-year	33.7	34.7	34.8	34.3														
15-year	33.4	34.7	34.8															
16-year	33.4	34.7																
17-year	33.4																	
18-year	33.4																	
19-year	33.4																	
20-year	33.4																	

^a Rates are from the SEER 9 areas.

^b Rates are from the NCHS public use data file.

^c Incidence and death rates are per 100,000 and are age-adjusted to the 2000 U.S. standard population by 5-year age groups. Survival rates are relative rates expressed as percents.

Table XX-6
OVARY CANCER (Invasive)

Percent Diagnosed With Cancer In 10, 20 and 30 Years and In Remaining Lifetime,
 Given Cancer Free At Current Age By Race

Lifetime Risk (Percent) of Being Diagnosed (12 SEER Areas) With Cancer and
 Lifetime Risk (Percent) of Dying (Total U.S.) From Cancer

1998-2000

All Races

Current Age	+10 yrs	+20 yrs	+30 yrs	Eventually
0	0.00	0.02	0.05	1.72
10	0.01	0.05	0.12	1.74
20	0.04	0.11	0.27	1.73
30	0.07	0.24	0.54	1.70
40	0.17	0.47	0.88	1.64
50	0.31	0.73	1.16	1.51
60	0.44	0.89	1.18	1.25

Lifetime Risk of Being Diagnosed = 1.72%
 Lifetime Risk of Dying = 1.02%

Whites

Current Age	+10 yrs	+20 yrs	+30 yrs	Eventually
0	0.00	0.01	0.05	1.85
10	0.01	0.05	0.12	1.87
20	0.04	0.11	0.29	1.86
30	0.07	0.25	0.58	1.83
40	0.18	0.50	0.95	1.77
50	0.33	0.79	1.26	1.62
60	0.48	0.97	1.27	1.34

Lifetime Risk of Being Diagnosed = 1.85%
 Lifetime Risk of Dying = 1.07%

Blacks

Current Age	+10 yrs	+20 yrs	+30 yrs	Eventually
0	0.00	0.01	0.04	1.10
10	0.01	0.04	0.09	1.13
20	0.03	0.08	0.18	1.13
30	0.05	0.15	0.32	1.11
40	0.11	0.28	0.57	1.08
50	0.18	0.49	0.80	1.01
60	0.33	0.67	0.85	0.90

Lifetime Risk of Being Diagnosed = 1.10%
 Lifetime Risk of Dying = 0.72%

Table XX-7
OVARY CANCER (Invasive)

AGE-ADJUSTED SEER INCIDENCE AND U.S. DEATH RATES

By Race/Ethnicity and Sex

Incidence^a

RACE/ETHNICITY	Rate 1996-2000	Trend 1992-2000
	Rate per 100,000 persons	APC (%)
	<u>Females</u>	<u>Females</u>
All Races	16.8	-0.8 ^d
White	17.9	-0.7 ^d
White Hispanic ^b	14.5	-1.4
White Non-Hispanic ^b	18.3	-0.6 ^d
Black	11.9	-0.7
Asian/Pacific Islander	12.2	-0.3
Amer Ind/Alaska Nat	10.7	-2.0
Hispanic ^b	14.0	-1.2

Mortality^c

RACE/ETHNICITY	Rate 1996-2000	Trend 1992-2000
	Rate per 100,000 persons	APC (%)
	<u>Females</u>	<u>Females</u>
All Races	8.8	-0.8 ^d
White	9.1	-0.7 ^d
White Hispanic ^b	6.3	-1.0
White Non-Hispanic ^b	9.3	-0.5
Black	7.4	-1.2 ^d
Asian/Pacific Islander	4.7	-0.8
Amer Ind/Alaska Nat	4.5	-5.3 ^d
Hispanic ^b	6.1	-0.9

The APC is the Annual Percent Change over the time interval.

- Statistic not shown. Rate based on less than 25 cases for the time interval. Trend based on less than 10 cases for at least one year within the time interval.

^a Incidence data are from the 12 SEER areas (San Francisco, Connecticut, Detroit, Hawaii, Iowa, New Mexico, Seattle, Utah, Atlanta, San Jose-Monterey, Los Angeles, and Alaska Native Registry).

^b Hispanic and Non-Hispanic are not mutually exclusive from whites, blacks, Asian Pacific Islanders, and American Indians/Alaska Natives. Incidence data for Hispanics and Non-Hispanics do not include cases from Detroit, Hawaii and Alaska Native Registry. For mortality, information is included for all states except Connecticut, Oklahoma, New York, and New Hampshire.

^c Mortality data are analyzed from a public use file provided by the National Center for Health Statistics (NCHS).

^d The APC is significantly different from zero (p<.05).

Table XX-8
OVARY CANCER (Invasive)

AGE-ADJUSTED SEER INCIDENCE RATES^a AND SEER DEATH RATES^b
 By Registry, Race and Age

	All Races, Females			White Females			Black Females		
	All	<65	65+	All	<65	65+	All	<65	65+
<u>SEER INCIDENCE RATES^a, 1996-2000</u>									
REGISTRY									
12 registries	16.8	11.2	55.3	17.9	11.9	59.2	11.9	7.1	45.1
11 registries	16.8	11.2	55.3	17.9	11.9	59.2	11.9	7.1	45.1
9 registries	16.9	11.2	56.3	18.0	11.9	59.6	11.9	6.9	46.5
San Francisco-Oakland	16.8	11.4	54.2	18.7	12.4	62.0	11.8	7.9	38.9
Connecticut	15.9	10.5	53.4	16.6	11.0	54.9	7.3	4.3	-
Metropolitan Detroit	17.3	11.5	57.6	18.6	12.9	58.1	13.9	7.9	55.8
Hawaii	14.7	11.4	37.4	18.3	13.5	51.4	-	-	-
Iowa	17.8	12.0	57.7	17.8	12.0	58.1	-	-	-
New Mexico	14.5	9.7	47.9	14.5	9.7	48.3	-	-	-
Seattle-Puget Sound	20.1	12.9	69.7	21.0	13.6	72.5	14.3	-	-
Utah	16.2	10.8	53.5	16.5	11.0	54.7	-	-	-
Metropolitan Atlanta	15.2	9.2	57.0	17.1	10.5	63.0	10.8	6.4	41.2
San Jose-Monterey	16.0	10.7	52.6	17.0	11.0	58.1	-	-	-
Los Angeles	16.5	11.2	52.8	17.9	12.1	57.9	11.9	7.7	41.5
<u>SEER DEATH RATES^b, 1996-2000</u>									
REGISTRY									
12 registries	8.8	3.7	43.5	9.4	4.0	47.0	7.0	3.0	34.8
11 registries	8.8	3.7	43.4	9.4	4.0	46.9	7.0	3.0	34.8
9 registries	8.8	3.7	43.6	9.4	4.0	46.8	6.7	2.7	34.7
San Francisco-Oakland	8.6	3.9	41.1	9.9	4.4	47.7	7.6	3.5	35.7
Connecticut	8.4	3.6	41.9	8.7	3.8	43.2	4.5	-	-
Metropolitan Detroit	8.5	3.7	42.2	9.2	4.2	44.3	6.3	2.3	33.6
Hawaii	5.9	3.6	21.8	8.4	5.3	30.3	-	-	-
Iowa	9.3	3.9	47.2	9.4	3.9	47.6	-	-	-
New Mexico	7.8	3.6	37.3	8.1	3.7	38.2	-	-	-
Seattle-Puget Sound	10.5	4.0	55.3	10.9	4.1	57.6	-	-	-
Utah	8.7	3.6	44.2	8.8	3.7	44.5	-	-	-
Metropolitan Atlanta	8.6	3.3	45.6	8.9	3.3	47.7	7.7	3.2	39.2
San Jose-Monterey	8.4	3.6	41.2	9.1	3.9	45.2	-	-	-
Los Angeles	8.9	3.9	43.2	9.7	4.2	47.7	7.6	3.6	35.1

Note: San Jose-Monterey and Los Angeles are new SEER areas as of 1992 and their data are only used in tables where indicated.

^a SEER 9 areas. Incidence rates are per 100,000 and are age-adjusted to the 2000 U.S. standard population by 5-year age groups.

^b NCHS public use data file. Death rates are per 100,000 and are age-adjusted to the 2000 U.S. standard population by 5-year age groups.

- Statistic could not be calculated or populations are inadequate.

Table XX-9
OVARY CANCER (Invasive)

AVERAGE ANNUAL AGE-ADJUSTED CANCER DEATH^a RATES BY STATE, 1996-2000

All Races, Females

State	Rate	SE	Rank	PD	State	Rate	SE	Rank	PD
TOTAL U.S.	8.8	0.03							
High Five States									
Washington	10.3 ^{bc}	0.27	(01)	17.0					
Maine	10.2 ^b	0.52	(02)	15.9					
South Dakota	9.9	0.68	(03)	12.5					
Idaho	9.9	0.56	(04)	12.5					
Oregon	9.8	0.32	(05)	11.4					
Low Five States									
Mississippi	8.1	0.32	(47)	-8.0					
Oklahoma	8.0	0.29	(48)	-9.1					
Arizona	7.8 ^c	0.24	(49)	-11.4					
New Mexico	7.8	0.42	(50)	-11.4					
Hawaii	5.9 ^{bc}	0.43	(51)	-33.0					
Alabama	9.0	0.26	(19)	2.3	Montana	9.5	0.61	(09)	8.0
Alaska	9.1	1.09	(17)	3.4	Nebraska	8.5	0.42	(38)	-3.4
Arizona	7.8 ^c	0.24	(49)	-11.4	Nevada	8.5	0.45	(36)	-3.4
Arkansas	8.8	0.34	(23)	0.0	New Hampshire	8.6	0.52	(32)	-2.3
California	9.0	0.11	(20)	2.3	New Jersey	9.5	0.20	(08)	8.0
Colorado	8.6	0.30	(33)	-2.3	New Mexico	7.8	0.42	(50)	-11.4
Connecticut	8.4	0.29	(39)	-4.5	New York	9.1	0.13	(16)	3.4
Delaware	9.6	0.67	(06)	9.1	North Carolina	8.4	0.20	(41)	-4.5
District of Columbia	8.7	0.74	(26)	-1.1	North Dakota	8.5	0.67	(37)	-3.4
Florida	8.4	0.13	(40)	-4.5	Ohio	8.7	0.16	(28)	-1.1
Georgia	8.7	0.22	(30)	-1.1	Oklahoma	8.0	0.29	(48)	-9.1
Hawaii	5.9 ^{bc}	0.43	(51)	-33.0	Oregon	9.8	0.32	(05)	11.4
Idaho	9.9	0.56	(04)	12.5	Pennsylvania	9.3	0.15	(13)	5.7
Illinois	9.2	0.17	(15)	4.5	Rhode Island	8.8	0.53	(24)	0.0
Indiana	9.3	0.24	(11)	5.7	South Carolina	8.3	0.28	(43)	-5.7
Iowa	9.3	0.32	(12)	5.7	South Dakota	9.9	0.68	(03)	12.5
Kansas	8.7	0.34	(29)	-1.1	Tennessee	9.0	0.24	(21)	2.3
Kentucky	8.5	0.28	(35)	-3.4	Texas	8.2 ^c	0.13	(46)	-6.8
Louisiana	8.3	0.27	(44)	-5.7	Utah	8.7	0.46	(27)	-1.1
Maine	10.2 ^b	0.52	(02)	15.9	Vermont	8.2	0.70	(45)	-6.8
Maryland	8.7	0.25	(31)	-1.1	Virginia	8.9	0.22	(22)	1.1
Massachusetts	8.7	0.22	(25)	-1.1	Washington	10.3 ^{bc}	0.27	(01)	17.0
Michigan	9.2	0.19	(14)	4.5	West Virginia	9.4	0.40	(10)	6.8
Minnesota	9.1	0.27	(18)	3.4	Wisconsin	9.6	0.25	(07)	9.1
Mississippi	8.1	0.32	(47)	-8.0	Wyoming	8.3	0.82	(42)	-5.7
Missouri	8.6	0.23	(34)	-2.3					

^a NCHS public use data file. Rates are per 100,000 and are age-adjusted to the 2000 U.S. standard population by 5-year age groups.

^b Absolute percent difference between state rate and total U.S. rate is 15% or more.

^c Difference between state rate and total U.S. rate is statistically significant ($p \leq .0002$).

SE Standard error of the rate.

PD Percent difference between state rate and total U.S. rate.

Table XX-10
OVARY CANCER (Invasive)

Estimated United States Cancer Prevalence Counts^a on January 1, 2000
By Race/Ethnicity, Sex and Years Since Diagnosis

Years Since Diagnosis	0 to <5	5 to <10	10 to <15	15 to <20	20 to <25	0 to <10	0 to <25	>=25 ^f	Complete ^g
<u>Race</u>									
All Races ^b	70,400	42,213	25,933	17,685	13,578	112,613	169,809	33,140 ^h	202,949
White ^b	62,914	37,690	23,540	16,020	12,177	100,604	152,341	27,175 ^h	179,516
Black ^b	4,610	2,827	1,624	1,107	1,021	7,437	11,189	+	+
Asian/Pacific Islander ^c	2,009	1,145	+	+	+	3,154	+	+	+
Hispanic ^d	4,435	2,684	+	+	+	7,119	+	+	+

Estimated prevalence percent^a on January 1, 2000, of the SEER 11 population diagnosed in the previous 10 years
By Age at Prevalence, Race/Ethnicity and Sex

Age at Prevalence	All Ages	Age Specific (Crude)									Age-Adjusted ^e All Ages
		0-9	10-19	20-29	30-39	40-49	50-59	60-69	70-79	80+	
<u>Race</u>											
All Races ^c	0.0741%	-	0.0055%	0.0225%	0.0479%	0.0905%	0.1594%	0.2063%	0.2142%	0.1460%	0.0753%
White ^c	0.0821%	-	0.0050%	0.0227%	0.0514%	0.0970%	0.1722%	0.2278%	0.2301%	0.1525%	0.0810%
Black ^c	0.0395%	-	-	0.0180%	0.0302%	0.0605%	0.0872%	0.1116%	0.1508%	0.0982%	0.0470%
Asian/Pacific Islander ^c	0.0567%	-	0.0103%	0.0236%	0.0419%	0.0736%	0.1332%	0.1363%	0.1325%	0.1062%	0.0584%
Hispanic ^d	0.0420%	-	0.0055%	0.0238%	0.0394%	0.0679%	0.1320%	0.1644%	0.1952%	0.1278%	0.0632%

^a US 2000 cancer prevalence counts are based on 2000 cancer prevalence proportions from the SEER registries and 1/1/2000 US population estimates based on the average of 1999 and 2000 population estimates from the US Bureau of the Census. Prevalence was calculated using the First Malignant Primary Only for a person.

^{b c d} Statistics based on b) SEER 9 Areas c) SEER 11 Areas d) SEER 11 Areas excluding Hawaii and Detroit.

^e Percentages are age-adjusted to the 2000 US standard population by 5-year age groups.

^{f g h} (f) Cases diagnosed 25 years or more ago were estimated using the completeness index method (Capocaccia et. al. 1997, Merrill et. al. 2000). (g) Complete prevalence is obtained by summing 0 to <25 with >=25. (h) Age-specific completeness index was approximated using empirical data from historical Connecticut tumor registry.

- Statistics not shown. Rate based on less than 25 cases estimated alive for the time interval.

+ Not available.

SEER Incidence, Delay Adjusted Incidence and US Death Rates+ Ovary Cancer, by Race

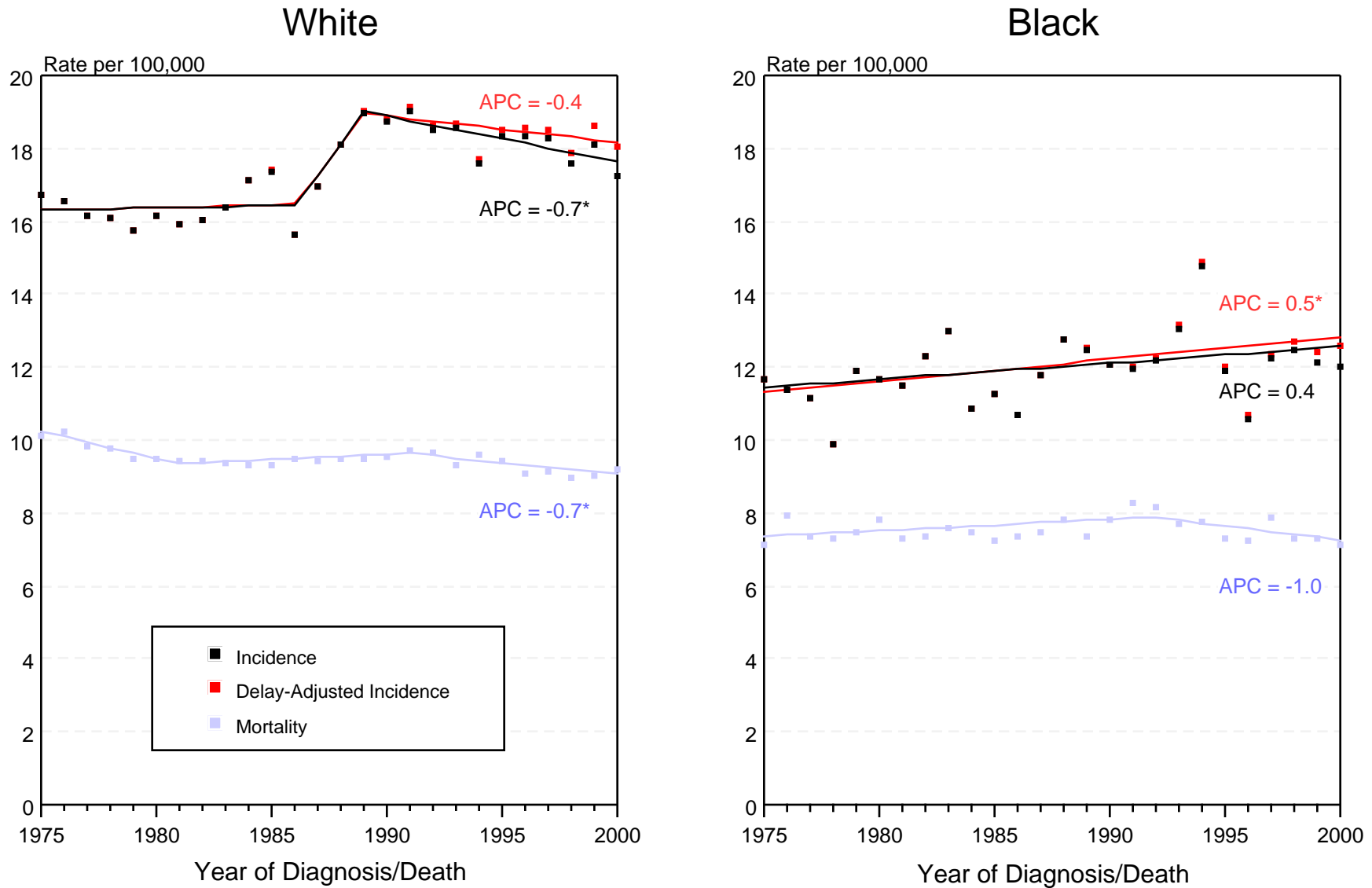


Figure XX-1

+ Source: SEER 9 areas and NCHS public use data file. Rates are age-adjusted to the 2000 US standard million population by 5-year age groups. Regression lines and APCs are calculated using the Joinpoint Regression Program. The APC is the Annual Percent Change for the regression line segments. The APC shown on the graph is for the most recent trend.

* The APC is significantly different from zero ($p < 0.05$).

SEER Incidence and US Death Rates+ Ovary Cancer, by Age and Race

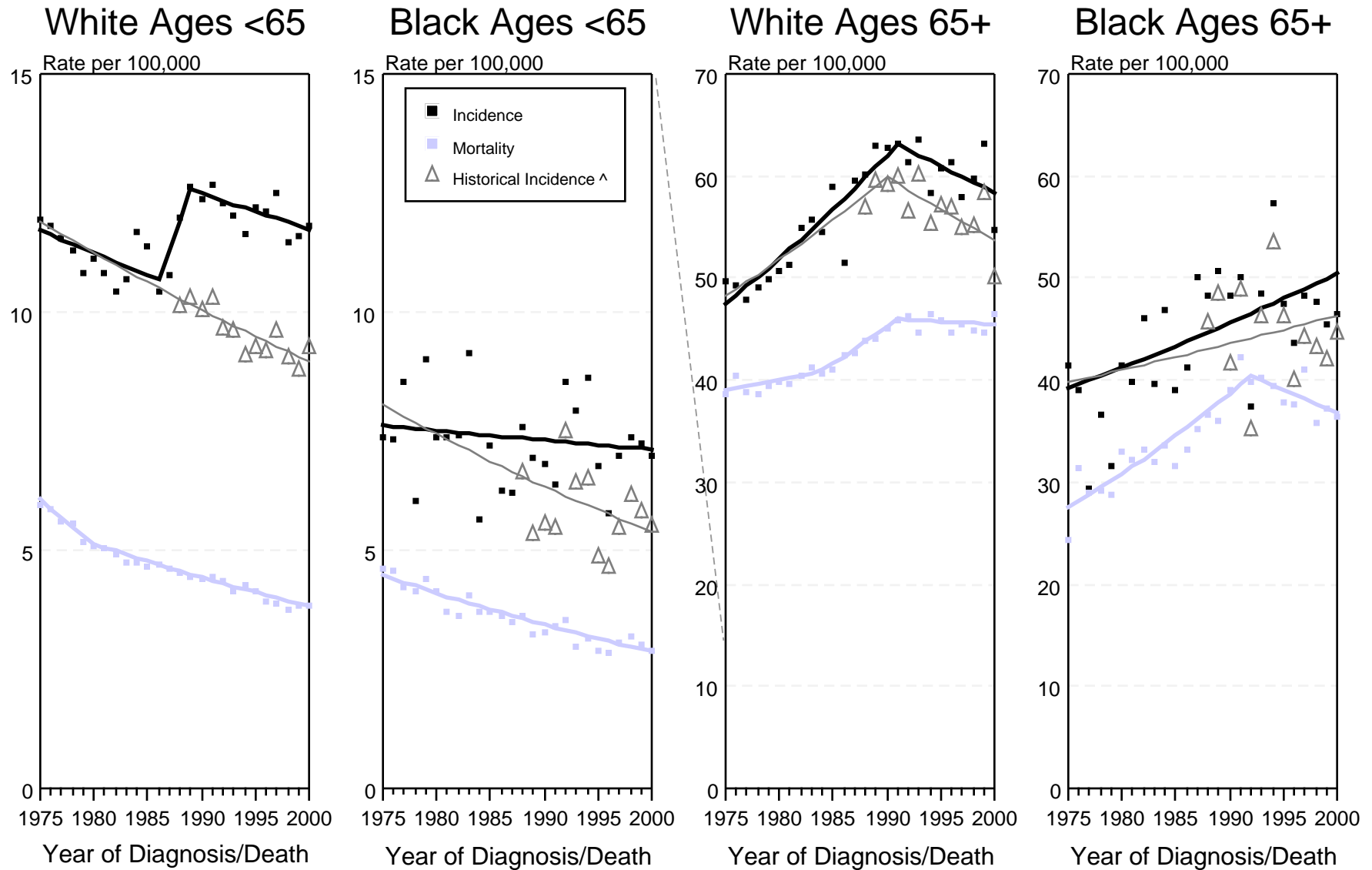


Figure XX-2

+ Source: SEER 9 areas and NCHS public use data file. Rates are age-adjusted to the 2000 US standard million population by 5-year age groups. Regression lines are calculated using the Joinpoint Regression Program.

^ The Incidence trends represented by the thin line excludes histologies 8442, 8451, 8462, 8472, and 8473 which only became reportable as malignancies after 1987.