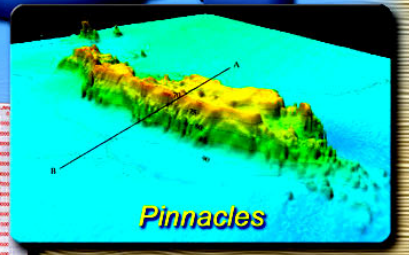
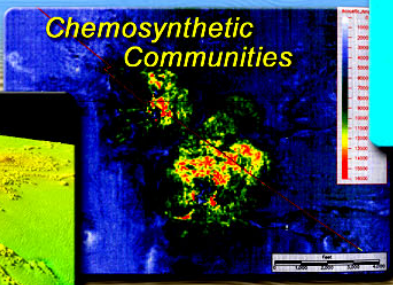
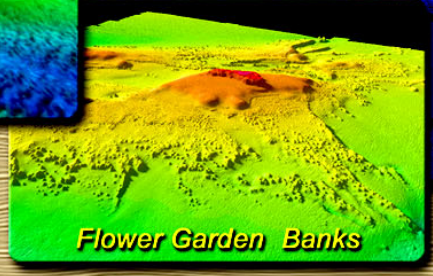
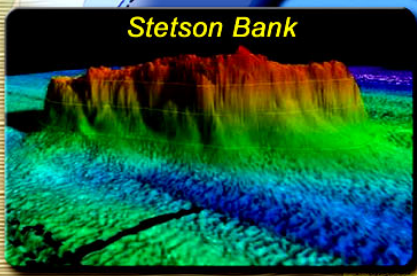
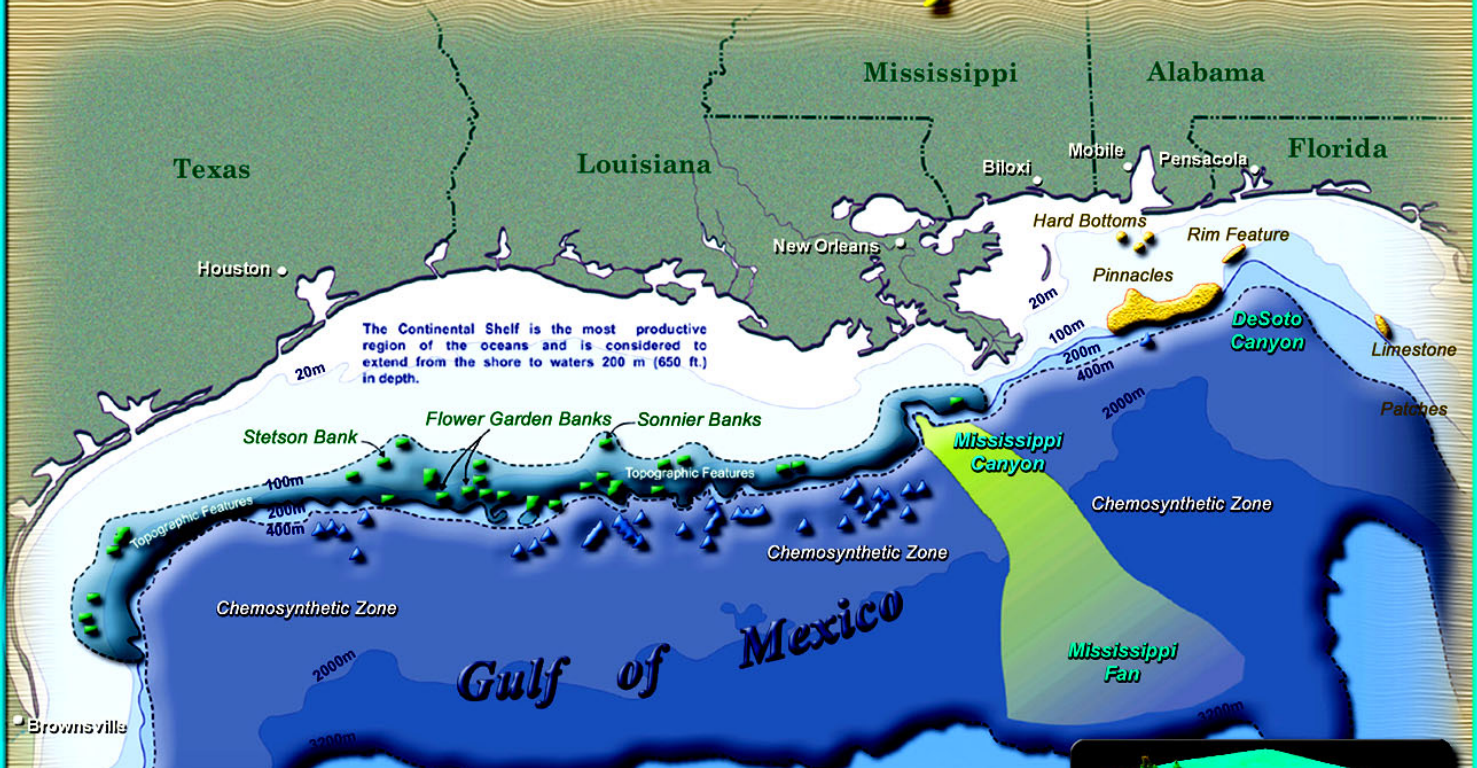


Gulf of Mexico Offshore Oases

A Teacher's Companion



GULF OF MEXICO OFFSHORE OASES

A Teacher's Companion



Susan A. Childs and Gregory S. Boland
Minerals Management Service
Gulf of Mexico OCS Region
James Sinclair
University of New Orleans

Photo/Image Credits

Susan A. Childs
Gregory S. Boland
Terry Rankin
Harley Moody
Douglas Weaver
J. Blair
LGL Ecological Research Associates

Class Exercises

Susan A. Childs
Gregory S. Boland
James Sinclair
Seaworld.com

Note to Teachers

Gulf of Mexico Offshore Oases is a teacher's instructional guide to accompany the poster of the same title. In this guide, you will find information that focuses on the various seafloor habitats and the geology that drives them, as well as the marine animals associated with these extraordinary systems. This guide will focus on three specific habitat features. The information and activities are intended for use at the 6-12 grade levels. Additional topics and resources are included at the end of the guide.

The Minerals Management Service (MMS) has funded numerous scientific studies to understand better the oceanographic processes in the Gulf of Mexico. This Teacher's Resource contains information that was gathered during these studies. The MMS is the Federal agency that regulates oil and gas activities on the U.S. Outer Continental Shelf. To learn more about the MMS, please visit our website at www.mms.gov.

Where to Get the Poster and Teacher's Companion

Copies of the poster and Teacher's Resource may be obtained from the Public Information Office at the following address:

**U.S. Department of the Interior
Minerals Management Service
Gulf of Mexico OCS Region
Public Information Office (MS 5034)
1201 Elmwood Park Boulevard
New Orleans, Louisiana 70123-2394
Telephone Number: (504) 736-2519 or
1-800-200-GULF**

**You can also access this Teacher's Companion
through the WWW at:**

<http://www.mms.gov>

- Select:**
- ⇒ **Managing Offshore Resources**
 - ⇒ **Gulf of Mexico OCS Region**
 - ⇒ **Lagniappe (Educational Resources)**

Table of Contents

	Page Number
About This Lesson	4
GULF OF MEXICO OFFSHORE OASES	5
INTRODUCTION	5
Substrate	5
Relief	6
Nepheloid Layer	6
Habitat Complexity	6
Distance from Shore	7
Temperature	7
Class Exercises	8
UNIQUE SEAFLOOR HABITATS OF THE GULF OF MEXICO	11
GULF OF MEXICO (MAP)	12
Coral Reefs of the Flower Garden Banks National Marine Sanctuary including Stetson Bank	13
Introduction	13
Living Coral Reefs	13
Partially Drowned Reefs	15
Drowned Reefs	15
Geology	16
Stetson Bank	17
Protection	18
Class Exercises	19
Chemosynthetic Communities	22
Chemosynthetic Communities: A New Way of Living	22
Class Exercises	26
Pinnacle Trends	28
Studying the Pinnacles	29
Class Exercise	33
Review Exercise	34
Minerals Management Service Mission Statement	36
Glossary of Terms	37

About This Lesson

This lesson is designed to teach students at the middle and high school levels about Offshore Oases habitats of the Gulf of Mexico. Each topic covered within the lesson is followed directly by class exercises. The material presented follows the National Science Education Content Standards guidelines. You can also access this Teacher's Resource online at <http://www.mms.gov>.

Where It Fits in the Curriculum

Topics: This lesson can be used to help students learn about factors that influence unique offshore habitats. It can also be used as part of a biology and geology curriculum.

Standards: The material meets the content standards for grades 7-12 as defined by National Science Education Content Standards from the National Science Teachers Association. The following content standards apply:

Science as Inquiry

- Abilities Necessary to do Scientific Inquiry
 - Think critically and logically to understand the relationships between evidence and explanations.
 - Identify questions and concepts that guide scientific investigation.
- Understandings about Scientific Inquiry
 - Different kinds of questions require different kinds of scientific investigations, including observing and describing, collecting, experimentation, research, discovery, and developing models.
- Scientists usually inquire about how physical, living, or designed systems function.

Life Science

- Structure and Function in Living Systems

Science in Personal and Social Perspectives

- Science and Technology in Local, National, and Global Challenge
 - Science and technology can indicate what can happen, not what should happen. The latter involves human decisions about the use of knowledge.

Objectives for Students

- 1) To learn the factors that influence Offshore Oases habitats.
- 2) To understand the importance of substrates in the Gulf of Mexico.
- 3) To gain knowledge about marine life associated with each Offshore Oasis.
- 4) To apply basic biology and geology concepts related to unique offshore features.

Materials for Students

The materials in the lesson can be printed out, photocopied, and distributed to students.

GULF OF MEXICO OFFSHORE OASES

INTRODUCTION

The Gulf of Mexico encompasses approximately 1.5 million km² of area where most of the seafloor is made of soft sediments (sand and mud). Factors that influence Offshore Oases habitats include substrate and relief types, the nepheloid layer, habitat complexity, distance from shore, and temperature. Focusing on each of these influences will enhance understanding and sharpen the image of the unique Offshore Oases habitats of the Gulf of Mexico.

SUBSTRATE

Substrate is one of the major factors that determine what kind of community a habitat will support. The word substrate literally refers to the "layer below," or the bottom of the ocean underneath the water. The substrate forms the structure of the habitat. There are two basic types of substrate: soft and hard.

Soft substrate is composed of mud, sand, or gravel. Although individual pieces of gravel are hard, the substrate is considered soft because it is not "fixed" in place. It can be moved about by currents and wave action. Most residents of soft bottoms live in the substrate and are adapted to their changing environment.

Several types of hard substrate occur in the Gulf of Mexico and most are composed of rock. The Florida peninsula is carbonate (limestone) that was built up over millions of years after which the peninsula was covered by a shallow sea harboring reef-building animals. West of Florida, sediments from river runoff accumulate in thick layers, eventually forming sedimentary rock. In some places geologic upheaval or the formation of salt diapirs exposes the rock.

Salt diapirs are formed by tremendous pressure on thick layers of salt deep in the sediments. Early in its history, the Gulf of Mexico was a shallow sea that repeatedly dried out and refilled, leaving massive deposits of salt. Later, when the sea returned, sediments deposited by rivers into the Gulf of Mexico buried the salt deposits. The sediments continued to build, forming sedimentary rock over the salt. The weight of the rock and the sediments caused the salt to flow and squeeze up through faults in the rock. This action lifted some of the rock up through the overlying sediments, exposing it on the bottom of the seafloor.

Coral reefs developed on hard substrates thousands of years ago. In some cases, these are still living coral reefs, built up by reef animals to keep pace with the rise of sea level and the subsidence of the seafloor. In other cases, the reefs do not build as quickly as the relative rise in sea level and the reef is drowned. So, the substrate is coral reef, but not living coral reef.

Hard substrates in the Gulf of Mexico are sparse. Most of the floor of the Gulf is soft substrate. Silt and clay from hundreds of rivers form a blanket of mud that covers most of the seafloor. Thriving communities can bloom in the few places where rocks are thrust up from the seafloor.

These rocks nurture layer upon layer of organisms that could not survive on the soft bottoms. The rocks become covered with a layer of algae, sponge, bryozoans, and all manner of encrusting organisms. Hydroids, anemones, corals, and many other organisms that attach and grow upright form a complex, labyrinthine second layer of living habitat. In these layers live crabs, shrimp, worms, snails, bivalves, urchins, featherstars, fishes, and other animals. In the outermost layer are fishes, which forage above the reef. Many fish are nomads that visit the hard bottom habitats routinely for food and shelter. There is no doubt that these habitats are essential to many of the fisheries in the Gulf of Mexico. Every such habitat is like an oasis in a vast wilderness of soft bottom in the Gulf of Mexico.

RELIEF

Relief of the substrate is a significant factor affecting the development of the community associated with that habitat. The term "relief" refers to the elevation of the substrate compared with the surrounding seafloor. If a hard bottom has low relief (less than one or two meters), the community will likely be of low diversity and density, that is, few organisms in small numbers. If a habitat has medium relief (up to six meters), diversity and density will increase. Habitats with high relief (over six meters) may have high diversity and density. The difference is largely caused by sedimentation near the bottom caused by the nepheloid layer.

NEPHELOID LAYER

The nepheloid layer is a bottom layer of water that carries a large amount of suspended sediment. Fine sediments enter the Gulf of Mexico from rivers and settle on the bottom. Often these clays and silts are stirred back into the water column by wind, waves, and currents. Nepheloid layers in the Gulf are variable and may frequently affect a habitat. Any habitat within the nepheloid layer is subject to heavy sedimentation and low light levels. Only animals tolerant to these conditions can survive within the nepheloid layer. This is why habitats with low relief have a low diversity and density of organisms. Substrates that have high enough relief to stand above the nepheloid layer can support a community at its pinnacle very different from that at its base.

HABITAT COMPLEXITY

The complexity of a habitat affects the complexity of the community that develops. A smooth pyramid could represent the least complex of habitats. It would have only one type of substrate for the attachment of organisms: smooth, steep sides. Habitats with flat tops that protrude above the nepheloid layer have much more complex communities. Many more animals are able to settle and live on the horizontal surface of the top. Below the nepheloid layer, animals survive better on the steep vertical surfaces because these shed sediment deposits. In between the top and the nepheloid layer, the more complex the surface, the more diversity and density of organisms it supports. If the surface is pockmarked with depressions, gullies, and pits with overhangs, and even holes and tunnels that make the substrate hollow, then many more types of animals will be able to colonize the habitat. Community diversity and density are related to the topography of the habitat, and are also affected by the topography of the seafloor surrounding it. If the habitat is part of a trend or large area with similar habitats in the vicinity, it will have higher diversity and density because of its association with organisms in other habitats. The habitats in a large area

support each other by supplying larvae for colonization. Larvae have a better chance to survive and grow because of an increased likelihood for them to find a suitable home.

DISTANCE FROM SHORE

The distance of a habitat from shore controls the community that develops on any hard substrate. Salinity, nutrient load, turbidity, and the depth of water are all related to distance from shore. Rain runoff and rivers transport freshwater into the nearshore waters of the Gulf of Mexico, diluting the salt content of nearshore waters, reducing salinity. Many animals do not tolerate reduced salinity and are therefore restricted from nearshore waters. Rain and rivers also wash nutrients into the Gulf of Mexico, often producing plankton blooms. Plankton blooms, along with sediments from rivers, cloud the water, making it turbid. These combine to restrict light penetration to organisms on the substrate. Add to this the fact that even clear water filters out light, and you have a dynamic combination of factors that greatly influence communities. Nearshore communities are more likely to be exposed to high turbidity and low light penetration. Communities farther from shore may have less turbid water but are deeper, with more water between the animals and sunlight. This is why most of the animals on most of the oasis habitats in the Gulf of Mexico are filter feeders that do not require sunlight for their survival. These filter-feeding animals survive better if they are farther from shore and elevated above the bottom with less suspended sediment to cover them.

TEMPERATURE

Two major factors control the prevailing temperature on an oasis habitat: latitude and water movement. The distance of a habitat from the equator, latitude, greatly influences the temperature by changing the angle of the sun. The latitude of oasis habitats in the northern Gulf of Mexico is from 26° to about 30° north of the equator and is far enough north that they are exposed to a temperate climate. At these latitudes, temperatures frequently fall below 16°C in winter on many of the Offshore Oasis habitats. The 16°C isotherm is stressful for most coral and considered the lower limit for coral growth; therefore, tropical reefs are rare in the northern Gulf of Mexico.

Each Offshore Oasis in the Gulf of Mexico is an area of critical concern to the Minerals Management Service (MMS). Since the early 80's, the MMS has regulated the oil industry in the offshore environment. The MMS has sponsored many studies to improve its understanding of the offshore environment and its habitats. Offshore hard-bottom communities are particularly susceptible to impacts by man. Because of their prolific nature, these communities are targets of considerable commercial and recreational fishing as well as scuba diving. In addition, the geologic processes that formed many of these habitats also produced natural traps or outlets of petroleum products. Here, the MMS requires the oil industry to study and plan to avoid impacts on these sensitive habitats in the Gulf of Mexico. Continued efforts of MMS and other stewards of this unique marine resource ensure a continuance of sound management decisions while protecting and preserving each and every "Offshore Oasis."

Class Exercise 1

Sediments vary in the Gulf of Mexico and in order to examine the porosity and permeability of these sediments, you will need the following:

- Four large transparent containers at
- Measuring cup
- Mesh window screen
- Water
- About 2 kg of dry gravel
- About 2 kg of sand
- About 2 kg of clay or potting soil

Fill each of the glass jars, as shown in the illustration, with an equal volume of materials as follows: one with clay, one with sand, one with gravel and one with two-thirds gravel on the bottom and one-third clay on top. Pack each one firmly. Using the measuring cup, add water to each until no more will soak in and it just covers the surface. Record the volume added in each case.

Using the wire mesh to hold the sediments in place, pour the water out of each jar into the measuring cup and record the amount that comes back. Take note of how quickly the water pours out.

Questions for Students:

1. Spaces between particles are called pore spaces and their percentage of the total volume of the sediment is the porosity of the sediment. The porosity will vary depending on the size of the grains and the way that they are packed together. The amount of water required to fill the pore space of the sediment is relative to its porosity. Note which jar took the most water and which the least; that will indicate which type of sediment had the greatest porosity.
2. Permeability is a measure of the ease with which a fluid can flow through a material. It is related to how well the individual pore spaces are interconnected. Which jar did the water flow out of the fastest? Which jar did the water flow out of the slowest? Which sediment has the greatest permeability? Are they the same ones that had the greatest and least porosity? Which sediment has the least permeability?
3. What happened when water was added to the jar with the clay overlying the gravel? Is the clay an impermeable seal?
4. Name the sedimentary rock formed from sand; name the sedimentary rock formed from clay.

Expected Answers:

5. The sand and gravel jars will "absorb" the most water. If the gravel is coarse, students will actually see the water in the pore spaces. The sand-filled jar may well take almost as much. The clay-filled jar and the jar with a clay layer on top will likely absorb NO water, or at very least a mere fraction of the previous two. The students should be able to provide a qualitative statement about the size of the material and the associated pore spaces.
6. This exercise is an attempt to define permeability as a measure of ability to transmit fluids (the rate of flow). It will be important to ensure that the students actually observe and measure the water coming from within the sediment. In the case of the clay-filled jar, ensure they are not merely pouring water off the top. It may not be possible to actually time the discharge of water, but it will be obvious that the coarser sediments have better ability to discharge the fluids. An additional point should be made that, when these loose sediments become cemented to form rocks, the materials that cement the grains together generally reduce the porosity and permeability. Nevertheless, the general relationship is the same. The coarser material tends to have better porosity and permeability.

It should be readily apparent that the clay does not "absorb" any water (unless it was allowed to dry out significantly prior to the experiment). The gravel beneath the clay should be dry and the resulting interpretation about a seal should be evident.

Class Exercise 2

Circle the correct answer in the puzzle for the definitions listed below. The words may be vertical, horizontal, on a diagonal, or even backward.

S	O	M	S	E	D	I	M	E	N	T	S	I	C	E	P
Q	R	M	A	P	I	D	N	O	X	M	N	C	L	O	O
R	E	S	E	R	V	O	I	R	A	T	U	B	E	D	R
Y	N	I	F	S	P	R	S	T	T	X	A	B	L	S	O
N	A	N	8	Q	R	Z	A	G	X	M	H	Y	B	C	S
P	C	A	O	U	F	U	B	W	R	Y	H	G	I	I	I
S	E	G	A	G	U	T	Y	E	D	F	Y	A	C	N	T
S	L	R	V	J	M	N	P	R	K	L	V	C	N	O	Y
S	A	O	M	E	N	M	O	R	G	A	N	I	C	T	B
A	H	T	R	E	I	C	Z	C	A	H	K	E	L	K	Y
N	S	M	K	S	A	I	O	R	F	A	T	M	Z	N	M
D	C	E	T	R	O	B	I	C	N	G	H	S	J	A	O
S	A	L	B	L	V	N	I	A	W	U	V	C	D	L	R
T	H	O	D	A	B	O	K	L	A	R	C	I	N	P	T
O	N	H	E	S	J	T	E	R	I	R	L	D	O	J	L
N	S	L	K	Z	E	W	E	A	Y	T	I	V	A	R	G
E	T	A	S	N	E	D	N	O	C	B	Y	C	A	O	X

Definitions: The number in brackets is the number of letters in each word. (Teachers, remove the letter number to increase the activity level.)

1. A depression where sediments collect (5)
2. Pore space in rocks (8)
3. A type of mudstone that splits easily (5)
4. A compound containing hydrogen and carbon (11)
5. Compounds that contain carbon (6)
6. Organisms that float in water are (10)
7. Gas underground but liquid at the surface (10)
8. A rock containing oil or natural gas (9)
9. The characteristic that allows fluids to pass through rocks (12)
10. A coarse-grained sedimentary rock (9)
11. The material formed when rocks erode (8)
12. What every individual animal is; the word is derived from organic (8)
13. A rock that forms a barrier to liquids (11)

UNIQUE SEAFLOOR HABITATS OF THE GULF OF MEXICO

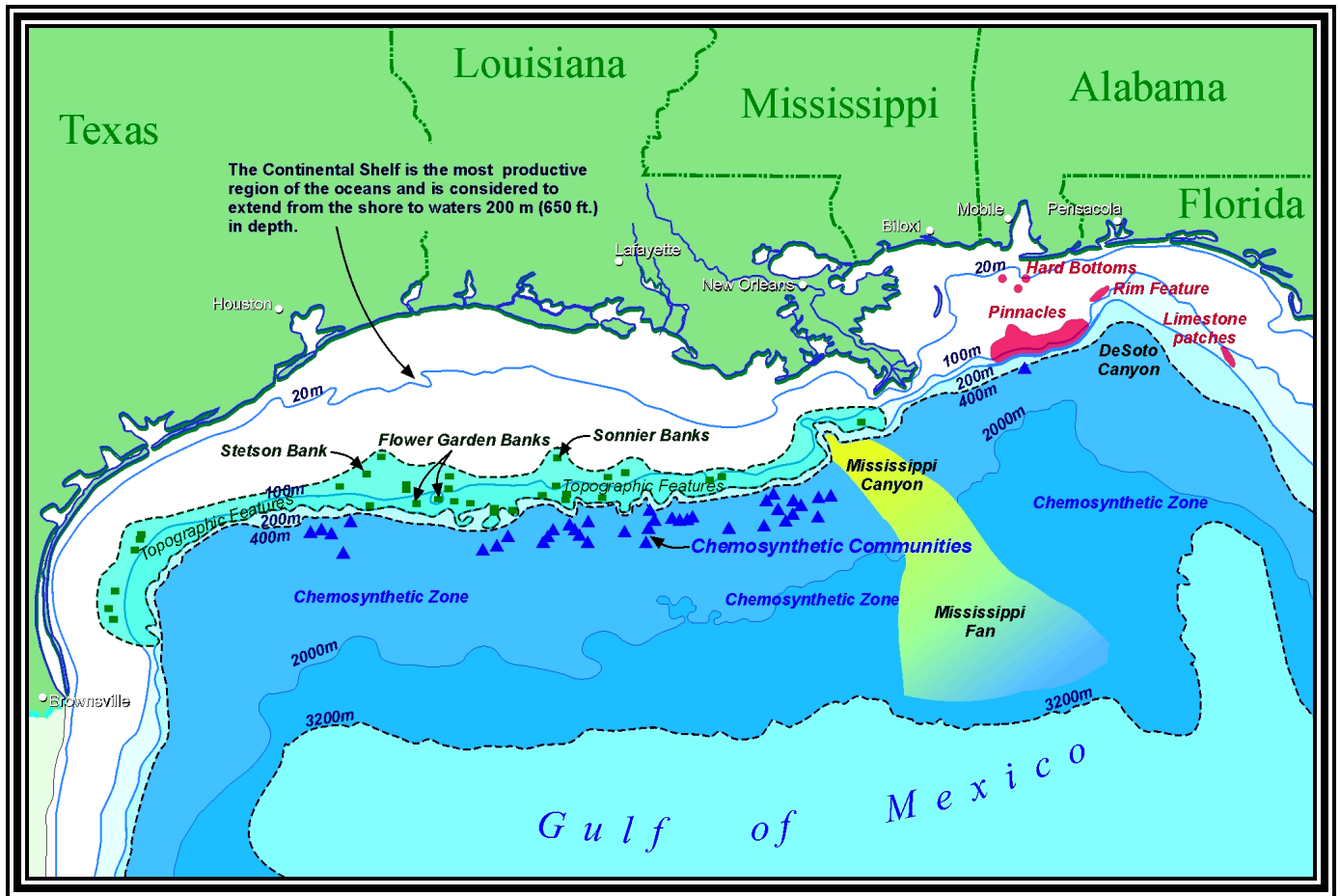
Whereas all of the different habitats associated with the *Gulf of Mexico* are important and play a vital role in the overall ecosystem health and sustainability of the *Gulf's* resources, this teacher's package is dedicated to the unique seafloor habitats. Unique seafloor habitats include Coral Reefs, Pinnacle Trends, and Deepsea Chemosynthetic Communities.

In various locations, geologic processes have "thrust up" or "pushed up" rocks to stand above the soft bottom, somewhat similar to stalagmites found in the complex cavern systems in the desert Southwest areas of the U.S. These comparatively small areas support a totally different community of organisms from the soft bottoms around them. The stability and complexity of these hard-bottom habitats provide a relatively unchanging home for a wide array of reef animals. As a result, a complex, thriving, and often densely packed community of organisms develops.

The organisms inhabiting hard bottoms in the *Gulf of Mexico* are especially adapted to the ecosystems and habitats in which they are found. Hard substrate supports a variety of alga and animal communities that attach directly to the surface, where these organisms become fixed in place. Algae, sponges, bryozoans, tunicates, and corals form encrusting layers that cover much of the rock. These and other animals such as hydroids, anemones, mollusks, and soft corals can also attach upright. The habitat produced by the hard bottom and its attached organisms provides shelter and food for many others. Millions of tiny crustaceans, worms, and larvae of all sorts consume plankton and bacteria and are in turn consumed by larger crustaceans, worms, larvae, corals, anemones, crabs, lobster, shrimp, etc. These animals are the targets of many fish, large and small. All of them together find a home in the varied and complex ecological niches produced by the hard substrates and their attached organisms. In addition to this, many fish such as jacks, tuna, sharks, rays, and even animals such as squid, dolphins, and sea turtles are attracted to these hard-bottom communities in the *Gulf of Mexico*. For most of these animals, the hard substrate is a requirement of life. For others, it is a great place to visit. For all of them, these unique habitats are like an oasis in the offshore environment.

THE GULF OF MEXICO

Location and Bathymetry of Unique Ecosystems of the Gulf of Mexico's Offshore Oases



Map Exercise

1. What state coastline comes closest to the deepwaters of the Gulf?
2. Which states have the widest and narrowest continental shelf, and how does this affect the coastal water habitats of these states?
3. What are the Mississippi Canyon and Mississippi Fan, and what is their role in sediment transport to the Gulf of Mexico?
4. Are there similarities with other oceans or is the Gulf of Mexico a unique resource? If it is unique, give examples of what makes it unique.

Coral Reefs of the Flower Garden Banks National Marine Sanctuary including Stetson Bank

Introduction

The Flower Garden Banks National Marine Sanctuary, including Stetson Bank, is a unique habitat on the Outer Continental Shelf of the Gulf of Mexico (Figures 1 and 2). It is located approximately 110 miles south of Galveston, Texas, and is the northernmost coral reef on the continental shelf of



Figure 1. Photograph of reef-building hermatypic corals that are dominant at the Flower Gardens - this is large-grooved brain coral (*Copophelia natans*). (Photo by Moody)

the habitat at the Flower Garden Banks National Marine Sanctuary. The most obvious controlling factor is the intensity of light at any particular depth. The banks are made up of living coral reef, partly drowned coral reef, and drowned coral reef. These components are the result of the varying amounts of light that reach the substrate at each depth. Each part of the reef harbors different groups of plants and animals.

Living Coral Reefs

The living coral reef (Figures 1 and 2) comprises the upper part of the reef or "cap" and is found in water depths of 18 - 52 meters. The reef is considered living because the "rock" of the reef is actually growing. Studies sponsored by MMS show that the stony corals and other organisms build or add approximately 4 - 8 mm of thickness each year to the surface of the reef. They accomplish this by extracting calcium from the water and building their own skeletons, forming deposits of calcium carbonate (limestone). As corals develop and other organisms die and new ones grow, the reef is built.

North America and one of the most pristine reefs in the world. The Minerals Management Service (MMS) has long been concerned with the protection and preservation of this Offshore Oasis habitat. The work of MMS, along with the National Oceanographic and Atmospheric Administration (NOAA), was instrumental in the establishment of the Flower Garden Banks as a National Marine Sanctuary in 1991.

Three distinct levels can be seen in



Figure 2. Many marine organisms use the reef system of Stetson Bank as nursery ground, for feeding, and prey avoidance. Pictured among others are creole fish (*Paranthias furcifer*), spotfin butterfly fish (*Chaetodon ocellatus*), and reef squirrelfish (*Holocentrus coruscus*). (Photo by Boland)

The living coral reef exhibits several distinct communities. The upper part of the living coral reef, above 36 meters, is an area of higher diversity. Although not as biologically diverse as most tropical reefs, the Flower Gardens are a regional reservoir of shallow-water Caribbean reef fishes and invertebrates in the Gulf of Mexico. There are more than 200

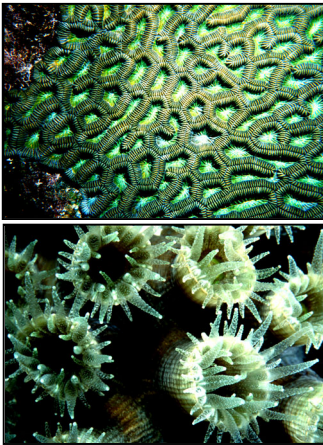


Figure 4. Polyps of a star coral (*Montastraea annularis*) and large grooved brain coral (*Colpophylia natans*), two of the most abundant large reef builders found at the Flower Gardens. (Photos by Moody)

species of reef fishes and 253 species of invertebrates with 18 species of reef-building corals (Figures 3 and 4). This part of the living coral reef is the most studied because it is accessible with scuba gear. The reef is a maze of coral structures riddled with small caverns, pockets, and overhangs, with occasional patches of sand or gravel. This makes for a complex habitat with a much more decidedly diverse community than other areas of the reef system. A myriad of animals make their homes in this complex structure, which provides them food to eat and refuge to avoid being eaten. Many fish that do not live in the reef routinely visit to feed on those fish and invertebrates that are a part of the reef community.



Figure 3. Christmas tree worms inhabit all areas of the reef with tubes typically encased in the massive reef building corals. (Photo by Childs)

Perhaps the most significant of all organisms found on the reef are the coral animals themselves and the algae they harbor in their tissues. The term "essential flora and fauna" is used to describe

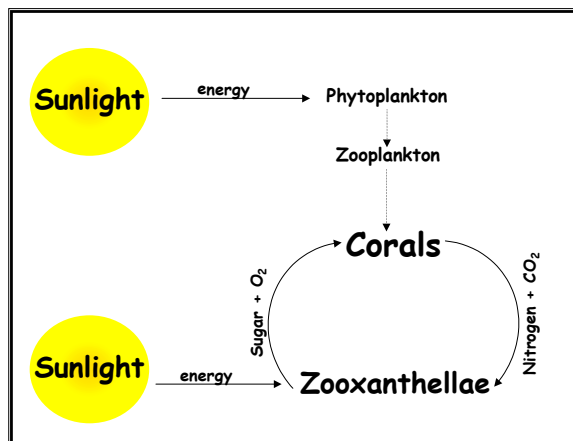


Figure 5. The symbiotic relationship between the coral animal and their interstitial algae, Zooxanthellae, is the building block of a coral reef.

the coral animal and leafy algae, or Zooxanthellae, which are of primary importance to the coral reef. The corals and Zooxanthellae have a distinctive symbiotic relationship that enhances creation of the corals' massive calcium carbonate skeletons. During this symbiosis, the Zooxanthellae absorb and use the nitrogen (Figures 4 and 5) produced by the coral animal, which in turn changes the pH of the water, allowing for greater deposition of calcium carbonate in the coral skeleton. Calcium carbonate produced in great quantities by many species of calcareous algae also bind these formations produced by the corals. Together, the reef corals and algae create a framework that becomes habitat to a highly diverse and productive marine community (Figures 1 and 2).

The lower part of the living coral reef is of lesser diversity, with approximately eight species of reef-building corals and fewer species of other invertebrates and fish than the upper reef. Reasons for this difference include lower intensity of sunlight at water depths of 36 - 52 meters;

however, it is still sufficient to support a thriving coral reef. Lower levels of available light favor different species of corals and a substantial increase in coralline algae, the essential flora component mentioned earlier, so important to the growth and stability of coral reefs.

On the outer margin of the Flower Gardens coral reefs, at depths of 28 - 44 meters, are occasional large knolls with yet different communities. These knolls are composed of both living and dead remains of a small branching coral known as yellow pencil coral. Some knolls are dominated by stands of this coral and others are covered by thick stands of leafy algae.

Partially Drowned Reefs

Partly drowned reefs occur in water depths of approximately 46 - 88 meters. At these depths, light intensity is too low to support communities dominated by organisms that build coral reefs. Reef-building corals do live here but not in sufficient quantities to cover substantial portions of rock. Partly drowned reefs were once living coral reefs, but because of sea level rise over the past 2,000 years, they are no longer near the surface.

Coralline algae play a large role in the partly drowned reef zone. The alga produces encrusting growth over any solid surface, cementing coral and shell debris to form nodules. The algal nodules cover 50 to 80 percent of the bottom, creating a complex habitat of high diversity comparable to living coral reefs in more shallow waters.

In addition to the coralline algae, an abundance of sponges and leafy algae grow among the nodules and structure of partly drowned reefs. Also to be found are calcareous green algae, sea urchins, sea stars, basket stars, feather stars, anemones, snails, bivalves, and many species of fish.

Some animals are present only in the lower portions of partly drowned reefs. A white, bedspring-shaped sea whip occurs from 52 to over 90 meters deep and is most abundant near the bottom of the partly drowned reefs. At 73 - 76 meters depth, the bottom changes abruptly to a coarse, level sand with fine silt and clay, supporting numerous sea urchins and sea stars. Some areas at 80 - 90 meters depth have a large population of small crinoids, clearly marking the transition from partly drowned reefs to drowned reefs.

Drowned Reefs

Drowned reefs at the Flower Garden Banks National Marine Sanctuary are in water depths below 88 meters with little light penetration. This area is typically turbid and covered with thin layers of sediment. No reef-building corals or coralline algae thrive at these depths; however, many animals do live on and around drowned reefs. The most conspicuous attached animals are crinoids, sea whips, sea fans, encrusting sponges, and solitary corals. Numerous fishes inhabit the drowned reefs as well, including snapper, grouper, butterflyfish, scorpionfish, and bass. Most of these fish are commonly found only on drowned reefs and deep, partly drowned reefs.

Geology

The physiographic provinces in the Gulf of Mexico—shelf, slope, rise, and abyssal plain—reflect the underlying geology. The erosion of land and deposition of sediments form sedimentary features, such as deltas, fans, canyons, and sediment flow forms. The Flower Garden Banks are the result of a geologic phenomenon, the formation of salt diapirs (Figure 6). Early in its formation, the Gulf of Mexico was a shallow sea, which repeatedly dried out and refilled, leaving massive deposits of salt.

Later, when the sea returned, sediments deposited by rivers into the Gulf of Mexico buried the salt deposits. The sediments continued to build, forming sedimentary rock over the salt. The weight of the rock and the sediments caused the salt to flow and squeeze up through faults in the rock. This action lifted some of the rock up through the overlying sediments, exposing it to the bottom of the seafloor. The sedimentary rock at the base of the Flower Garden

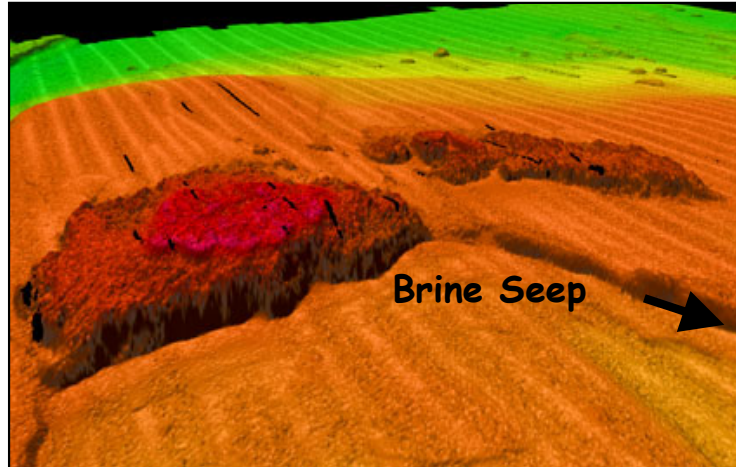


Figure 6. Multibeam bathymetry image of the East Flower Garden Bank illustrating some of the distinct geological formations (USGS 2000). The East Bank also features a unique underwater salt lake, fed by a brine seep 233 feet below the surface.

Banks was lifted in this manner. The salt layers that gave rise to the salt dome beneath the Flower Gardens formed 160 to 170 million years ago. The living coral reefs one sees today probably began forming 10 to 15 thousand years ago.

The Flower Garden Banks are distinguished from other salt diapir formations by several characteristics. Their distance from shore, 110 miles, removes them from the direct influence of land runoff. Therefore, clear waters with good light penetration surround them. These banks also have a much higher profile than other banks. The East Flower Garden Bank rises 116 meters from the surrounding seabed. The West Flower Garden Bank rises 130 meters. In addition to their high relief, these banks are much larger than similar banks, with the East Bank covering approximately 67 km² and the West Bank covering 137 km². This makes the Flower Garden Banks a unique habitat of great potential and one of the premier Offshore Oasis habitats of the Gulf of Mexico.

Stetson Bank

Another premier Offshore Oasis is Stetson Bank -- distinctly different from the Flower Garden Banks in its geological morphology. As seen in Figure 7, outcrops of vertically oriented claystone, siltstone, and sandstone of mid-Tertiary origin form Stetson Bank. Stetson is isolated from other banks by deep waters over 50 m and is characterized by its exposed bedrock and colorful sponges and fire corals. Stetson lies near the northern physiological limit for reef-building hermatypic corals, resulting in a species composition markedly different from that of tropical coral reefs. The reef is dominated by a variety of sponges and fire coral. There are also sparsely distributed, coral species, like the ten-ray star coral, a leaf-like coral known as fragile saucer coral, and the symmetrical brain coral. Because the species of star coral is so

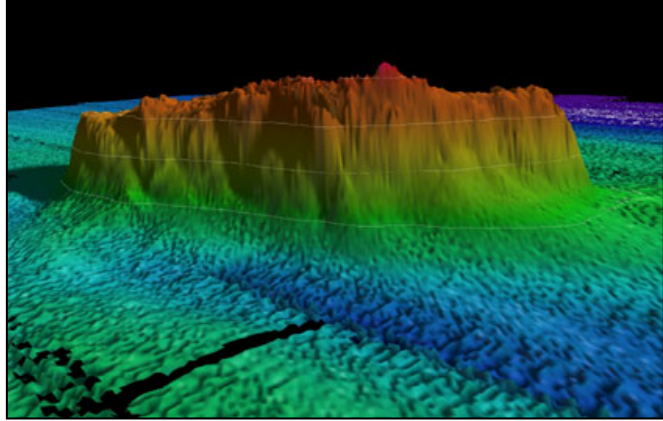


Figure 7. Multibeam bathymetry image of Stetson Bank showing the vertical orientation of the formation. (USGS 2000)

susceptible to being covered up through sedimentation, it tends to grow on sharp ledges around the reef and has developed an extraordinary formation known as the "Madracis wall" (referring to the

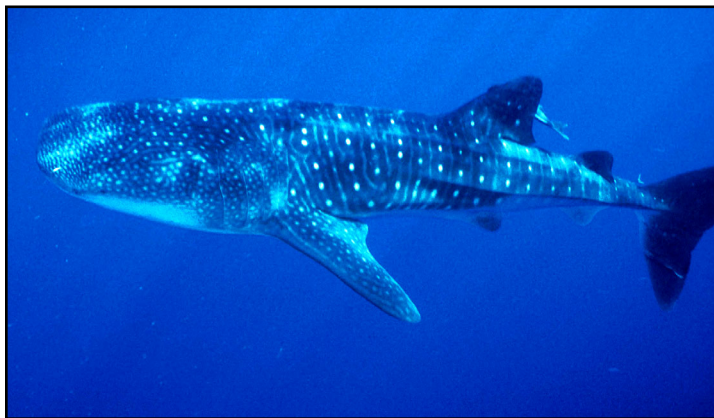


Figure 8. The whale shark, an occasional visitor at Stetson and the Flower Gardens, is easily recognized by its large size and spotted appearance. The whale shark is the largest fish known, with recorded specimens greater than 35 feet in length. (Photo by Boland)

scientific name *Madracis decactus*). Even though Stetson is deeper and located near the northern limits for coral growth, there are several hermatypic corals that occur. However, these species are sparsely distributed across the bank and small in comparison to those found at the Flower Gardens. Blushing star coral and symmetrical brain coral are two of the more common species found. Stetson Bank is considerably smaller than either the East or West Flower Garden Bank, measuring approximately 0.5 nautical miles long and 0.1 nautical miles wide.

In addition to Stetson's distinct landscape and topographic features, there is a large distribution of marine life residing at the bank. For example, there are over 143 species of reef and schooling fishes, 108 mollusks, and 3 common echinoderms. One of the most predominant biological features of the upper zones is the perforation of the substrate created by boring pelecypods, a rock-boring mollusk. In a study conducted in the mid-1970's, researchers found up to 350 holes per square meter of bottom in

places, with an average of 30 holes per square meter believed to harbor living pelecypods. Estimates of the population of these boring mollusks were greater than 1.5 million during this time.

Because of its vertical expression, Stetson attracts a number of pelagic species (Figure 8) that move back and forth across the continental shelf, using various banks, including the Flower Gardens, for seasonal feeding, mating, and as nursery ground. These large pelagic animals include species such as manta, eagle, and devil rays, and the filter-feeding whale shark (Figure 8). During winter months, December through March, large numbers of sharks and rays concentrate both at Stetson and the Flower Garden Banks. Scalloped hammerheads, tiger sharks, sandbar sharks, spotted devil and manta rays, are among the largest groups found during this time.

Stetson's unique characteristics have resulted in use by divers, boaters, and commercial and sport fishermen, as well as being utilized by professional photographers and mentioned in national publications when referring to the Flower Gardens National Marine Sanctuary. Stetson Bank became part of the Flower Garden Banks National Marine Sanctuary in 1996.

Protection

The MMS is charged with managing mineral resources on the OCS in an environmentally sound and safe manner. This means managing mineral exploration, production, and transport in a manner that protects and preserves the environment while providing for the economic recovery and processing of natural resources. The MMS has sponsored studies of the Flower Garden Banks for years and requires continued monitoring of the effects of gas and oil activities in the marine environment. The MMS is one of the primary agents in the protection of this unique and natural Offshore Oasis habitat.

Class Exercise 1

TACKLING TAXONOMY

We share the earth with approximately 1.4 million other kinds of organisms (that we know of). To study these organisms, scientists have developed a classification system called taxonomy. Taxonomy is the science of classifying animals and plants on the basis of their natural relationships. Using this system, scientists can easily save and recall information. Animals are grouped into several phyla. Each phylum includes animals that share similar characteristics. For example, all jellyfishes and sea anemones are in the phylum Cnidaria. Sea urchins and sea stars are in the phylum Echinodermata. You can use a variety of publications on fish and corals to find scientific names of these animals.

Match the correct common name with the corresponding binomial reference (scientific names)

Common Name	Binomial Reference	Correct Common Name
Fire Coral	<i>Colpophylia natans</i>	
Devil Ray	<i>Paranthias furcifer</i>	
Vermilion Snapper	<i>Lactophrys triqueter</i>	
Barbfish	<i>Spirobranchus annularis</i>	
Red Snapper	<i>Madracis mirabilis</i>	
Blushing Star Coral	<i>Scorparena plumieri</i>	
Common Octopus	<i>Diadema antillarum</i>	
Scalloped Hammerhead Shark	<i>Agaricia fragilis</i>	
Large Grooved Brain Coral	<i>Neofibularia nolitangere</i>	
Creole Fish	<i>Sphyrna lewini</i>	
Manta Ray	<i>Diploria strigosa</i>	
Gray Snapper	<i>Eucidaris tribuloides</i>	
Ruby Brittle Star	<i>Lutjanus analis</i>	
Calcareous Tube Worm	<i>Montastraea annularis</i>	
Yellowtail Snapper	<i>Rhincodon typus</i>	
Ten Ray Star Coral	<i>Mobula hypostoma</i>	
Spotfin Butterfly Fish	<i>Millipora alcicornis</i>	
Red Stinging Sponge	<i>Madracis decactis</i>	
Slate Pencil Urchin	<i>Arbatia arbatia</i>	
Fragile Saucer Coral	<i>Scorpaena brasiliensis</i>	
Smooth Trunk Fish	<i>Lutjanus griseus</i>	
Symmetrical Brain Coral	<i>Ocyurus chrysurus</i>	
Yellow Pencil Coral	<i>Stephanocoenia michilini</i>	
Whale Shark	<i>Manta birostris</i>	
Spotted Scorpion Fish	<i>Echinometra lucunter</i>	
Common Octopus	<i>Carcharhinus plumbeus</i>	
Star Coral	<i>Spondylus americanus</i>	
Banded Coral Shrimp	<i>Galeocerdo cuvier</i>	
Mutton Snapper	<i>Chaetodon ocellatus</i>	

Long-spin Sea Urchin	<i>Anisotrenus surinanaensis</i>	
Dog Snapper	<i>Lutjanus compechanus</i>	
Gray Snapper	<i>Rhomboplites aurorubens</i>	
Rockboring Sea Urchin	<i>Octopus vulgaris</i>	
Sandbar Shark	<i>Ophioderma rubicundum</i>	
Tiger Shark	<i>Stenopus hispidus</i>	

Class Exercise 2

Place each animal listed in Exercise 1 in the correct phylogenetic order to include:

PHYLUM
CLASS
ORDER
FAMILY
GENUS
SPECIES

Class Exercise 3

OPTIONAL FIELD STUDY

Materials

5" x 7" index cards

11 tables

pencils

paper

animal specimens. Use slides, mounts, taxidermy specimens, or photos of species representing each of the phyla listed below:

- 4 species of Porifera
- 4 species of Cnidaria
- 4 species of Ctenophore
- 4 species of Platyhelminthes
- 4 species of Nematoda
- 4 species of Bryozoa
- 4 species of Echinodermata
- 4 species of Annelida
- 4 species of Mollusca
- 4 species of Anthropoda
- 4 species of Chordata

1. Collect specimens for student observations.
2. Create cards listing the predominant characteristics of each phylum. For example, the Cnidaria card may read: Invertebrate animal that is radially symmetrical, has a central mouth

surrounded by tentacles, and has nematocysts. Omit the phylum name from each card. Students will determine the phylum from the information given and the specimens they observe.

3. Set up 11 tables; clearly number each. Place three specimens of the same phylum on each table. Include the correct card for the phylum represented. Place one remaining specimen on each table so that each table has one incorrect specimen - the specimen will not meet the requirements of the phylum represented.
4. Divide the class into cooperative learning groups. Groups have five minutes at each table to determine what phylum the specimens represent. Groups must also determine which specimen does not belong. Each group chooses one student (in their group) to record findings. This student will write the table number, the phylum represented at that table, which specimen does not belong on that table, and the phylum the group thinks this "misplaced specimen" belongs to.
5. After students have visited each table, groups report findings to the class. For each table, students discuss the phylum and explain why the incorrect specimen does not belong.

Which of these animals does not belong? Answer: The crab is an arthropod. The octopus, abalone, and snail are all molluscs.

From Diversity of Life|Missing Links

(c)1997 Sea World, Inc.

All Rights Reserved.

Chemosynthetic Communities

It is not widely known that the Gulf of Mexico, a relatively small body of water when compared with the Atlantic or Pacific Oceans, is home to some remarkable deep-sea animals usually associated with

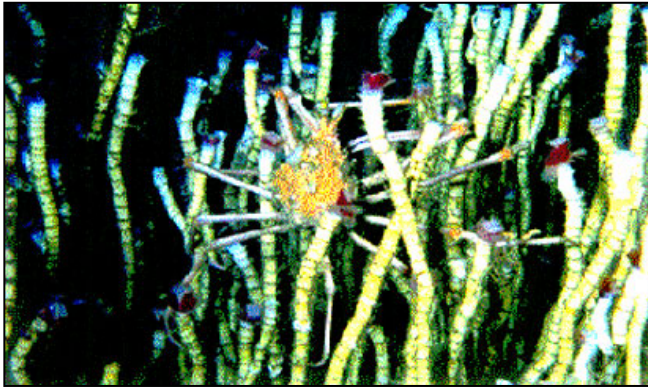


Figure 1. "Tube worm forests" harbor numerous attached as well as motile species like the spider crab. (Photo J. Blair, National Geographic Society)

geological features in the major oceans' great basins. The animals in these habitats, known as chemosynthetic communities, literally eat gas. In more specific terms, chemosynthetic communities are defined as persistent, largely sessile assemblages of marine organisms dependent upon chemosynthetic bacteria as their primary food source. These unique communities consist of clams, mussels, and tube worms (Figures 1 and 2) and have been discovered in association with hydrocarbon seeps in the northern Gulf of Mexico, hence the statement "literally eating gas." To clarify, "literally eating gas" refers to the consumption of the gas symbiotic bacteria, not

the animals that inhabit these communities.

Less than 10 years ago, a team of scientists from Texas A&M University under contract to Minerals Management Service (MMS) and the oil and gas industry, discovered chemosynthetic life forms on the floor of the Gulf of Mexico thousands of feet below the surface. The discovery was surprising and their presence unsuspected. In fact, the scientific investigation was one of many sponsored by MMS on the Gulf's Outer Continental Shelf since the passage of the National Environmental Policy Act of 1969.

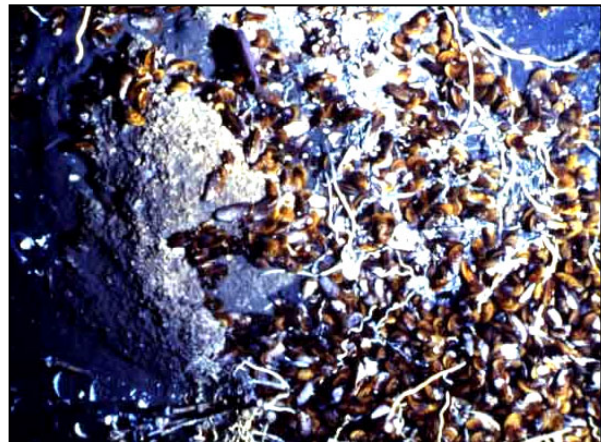


Figure 2. Chemosynthetic mussels use methane gas as their energy source for high-density mats. They are also a significant part of deepwater chemosynthetic communities providing food and shelter for many other organisms. (Photo by LGL/MMS)

CHEMOSYNTHETIC COMMUNITIES: A NEW WAY OF LIVING

For the most part, deep-sea animals live under conditions of total darkness, low temperature, nearly featureless mud, and sparse food resources. Devoid of living plant material, the source of food for most benthic (bottom-dwelling) fish and invertebrate life is the energy-poor remains of organic material that rain slowly down from surface waters. As a result, deep-sea animals tend to be generally small and fragile and display low densities and overall biomass (Figures 3 and 4).

Until about two decades ago, it was thought that all living things, plants and animals, were dependent upon the process of photosynthesis. But in 1977 other remarkable forms of life known as "chemosynthetic animals" were discovered. These animals were later found to be able to extract

their energetic needs from dissolved gasses in their environment in the presence of dissolved oxygen. The first discoveries of chemosynthetic animals, huge tube worms (known as vestimentiferans) and large clams, were in the Pacific Ocean. Living near hydrothermal vents in the spreading seafloor at the mid-ocean ridge, these remarkable animals were obtaining their energy from dissolved hydrogen sulfide issuing from the vents.

During the MMS-funded Northern Gulf of Mexico Continental Slope Study by LGL and Texas A&M University, well-developed chemosynthetic communities were discovered near natural petroleum seeps in the Gulf of Mexico. The community, known as "Bush Hill" for its "bushes" of giant tubeworms (Figure 5), was investigated by using a submersible. These Gulf



Figure 3. Photograph of a member of the Chimaeridae family of ratfish, *Hydrolagus alberti*. This is a deepsea/benthopelagic species that ranges from 348 m to 823 m depth in the Gulf of Mexico. (Photo by Boland)



Figure 4. Deepsea crab, *Chaceon quinqueedens* photographed at approximately 800 m depth in the Gulf of Mexico. (Photo by LGL/MMS)

communities were shown to be similar to those of other discoveries

around the world. In all cases, chemosynthetic forms were shown to harbor huge numbers of bacteria in their bodies and to possess various anatomical and physiological adaptations and intricate biochemical pathways that allow the use of chemical compounds produced by the symbiotic chemosynthetic bacteria. Aside from the fact that some of the chemicals used are ultimately the products of ancient photosynthesis

laid deep into sedimentary rocks over geologic time, these chemosynthetic animals had successfully broken their dependence upon photosynthesis and conventional eating (called heterotrophy).

With the discovery of the Gulf chemosynthetic communities, the MMS required that the oil and gas industry protect them from the physical effects of continental slope exploration and production. This protection evolved, and in December 1988, the MMS issued regulatory guidelines, which became effective on February 1, 1989. The guidelines required "...avoidance or protection of chemosynthetic communities and avoidance of shallow hazards..." It required that, in depths greater than 400 m, companies would provide data needed by the MMS to determine whether there was the potential for the local existence of chemosynthetic communities. Further, companies must delineate and identify all seafloor areas to be disturbed, as well as any evidence that the area might support chemosynthetic communities. If the MMS review suggests that chemosynthetic communities might be present, the company must:

- (1) modify its plan and relocate the operation,
- (2) modify the application to provide additional photographic or videotape information to determine the presence or absence of well developed communities, or
- (3) otherwise ensure that its activities do not impact a community (for example, through the precision placement of anchors).

However, this was a case-by-case measure, and MMS recognized the need for a better, comprehensive understanding of these communities in the Gulf. So, in 1991, the MMS funded the "Chemosynthetic Ecosystems Study," which was successfully conducted by the Geochemical and Environmental Research Group (GERG) of Texas A&M University (TAMU). This effort provided important multidisciplinary data at a limited number of sites believed to be representative of upper-slope chemosynthetic communities.

The MMS "Chemosynthetic Ecosystem Study" has revealed many intriguing facts about chemosynthetic communities and animals, and ways to conduct research. For example:

- All chemosynthetic species studied to date have a very slow growth rate. Some of the larger tubeworms may be hundreds of years old. They are currently believed to be the oldest living animals on earth. Community successions have been documented over 2,000 years, during which time there were several temporary extinctions.
- Unexpectedly, researchers have learned that while the chemosynthetic communities are locally productive habitats, only a little of the living carbon in the system supports the surrounding heterotrophic (non-chemosynthetic) food chain.
- The number of known chemosynthetic communities in the Gulf of Mexico now exceeds 50, ranging in depth from a few hundred meters to 3,270 m.
- Communities can change significantly over distances of only a few meters.
- All well-developed chemosynthetic communities harbor large numbers of non-chemosynthetic species, such as fishes, crustaceans, and snails.
- The levels of natural oil and gas seepage in the Gulf are great. Photographs taken from space suggest that seepage of oil in an area of about 15,000 square kilometers may be between 100,000 and 400,000 barrels per year. Some surface slicks coincide well with known positions of chemosynthetic communities.
- The types of data received during geophysical surveys may be used to allow researchers to make educated guesses about the locations of chemosynthetic communities.
- Naturally occurring anoxic brine pools have been discovered that can kill fish but fuel surrounding mussel beds with gas. Mussels that fall into the pool soon die because of the lack of oxygen. The pools are also far saltier than ambient water and some are much warmer.
- Several species have proven to be new to science. But they are closely related to other chemosynthetic species found elsewhere (themselves discovered only in the last 20 years). The structures of chemosynthetic communities worldwide are similar.



Figure 5. Photograph of giant tube worms from Bush Hill. (Photo by Boland)

- Manned research submersibles have so far proven to be the only feasible means to conduct the types of surveys and collections needed in deep specialized habitats.

The ecological significance of the chemosynthetic process in the deep ocean continues to be resolved through interdisciplinary studies. However, the evolutionary relationships among these communities are still an open question. Through research and continued investigative procedures, we will be able to understand the complex interactions among chemical, biological and geological processes in these unique environments.

These studies, which continue, have been spurred by the development of the offshore oil and gas industry and its movement into deepwater. Today, the continental shelf in the western and central Gulf of Mexico is distinctive in its population of thousands of active offshore platforms, some of which have been in place for decades. Because of this extensive development, MMS has funded many studies in the Gulf.

Information on the deep Gulf is needed now as the oil and gas industry moves well onto the slope and deeper water in its continuing search for producible oil and gas. New exploration in depths greater than 3,000 m is expected in the very near future. Only a few years ago technical and engineering considerations limited the depths in which oil and gas operators could explore for oil and produce it if they found it. Now, thanks to remarkable technological advances, the limiting factors are chiefly the costs involved; given the right market prices and a reservoir of sufficient size, however, the investment is economically justifiable. Under these circumstances, it becomes necessary to know more about life in the deep sea.

Class Exercise 1

Assignment:

1. Assign students projects relative to these deepwater topics: general information, research tools, fauna, geology, significance, ethics, and unsolved mysteries.

Discuss the following subjects:

(1) What is the basis of the chemosynthetic community food chain?

(2) How do tubeworms survive without sunlight or a mouth?

(3) How many creatures are associated with chemosynthetic communities and the deepwater of the Gulf?

Related Activity:

Make a model of the fauna around a chemosynthetic community, or deep Gulf seep?

Resources:

You may find images of creatures of the deep sea, including chemosynthetic communities associated with cold seeps and hydrothermal vents, on these and other Web sites:

- Tube worms at http://library.advanced.org/18828/data/fn_3.html
- "Deep-sea Bestiary" from NOVA Online/Into the Abyss" at <http://www.pbs.org/wgbh/nova/abyss/life/bestiary.html>
- Texas A&M University <http://www.ocean.tamu.edu/NR1/home.html>
- Pennsylvania State University <http://www.psu.edu>

Class Exercise 2

You are the Chief Scientist of an upcoming cruise to investigate chemosynthetic communities and associated deepwater organisms. You will be in charge of many scientists who are specialists in several different fields. You will also have a small group of school science teachers on board to assist the researchers. They know a lot about science, but little about cold seeps. They have many questions.

Your job as Chief Scientist is to coordinate the research work. You also must coordinate teaching the teachers about these areas.

Assignment:

1. If this is a class project, assign classmates to become experts in these deepwater topics: general information, research tools, fauna, geology, significance, ethics, and unsolved mysteries.

Discuss the following subjects:

(1) What is the basis of the chemosynthetic community food chain?

(2) How do tubeworms survive without sunlight or a mouth?

(3) Are there just a few creatures associated with Chemosynthetic Communities and the deepwater of the Gulf?

Related Activity:

How could I make a model of the fauna around a hydrothermal vent, chemosynthetic community, or deep Gulf seep?

Pinnacle Trends

The “Pinnacle Trend” is a band of submarine features off the Mississippi-Alabama coast and a significant component of the Gulf of Mexico Offshore Oases habitats (Figure 1). Commercial fishermen historically have known the value of these banks as important fishing grounds. The features lie in water depths ranging from about 67 to 110 meters and are mostly relict carbonate structures. The average height of the pinnacles is about 10 meters, with some exceeding 15 meters. Ahermatypic corals, octocorals, crinoids, hydroids, and sponges (Figure 2) dominate the communities. Other organisms living in these areas include a variety of antipatharians, crabs, seastars, and brittlestars. One of the most important contributions of these features is to provide habitat for numerous fishes commonly associated with hard-bottom habitats in the Gulf as well as a variety of pelagic fishes.

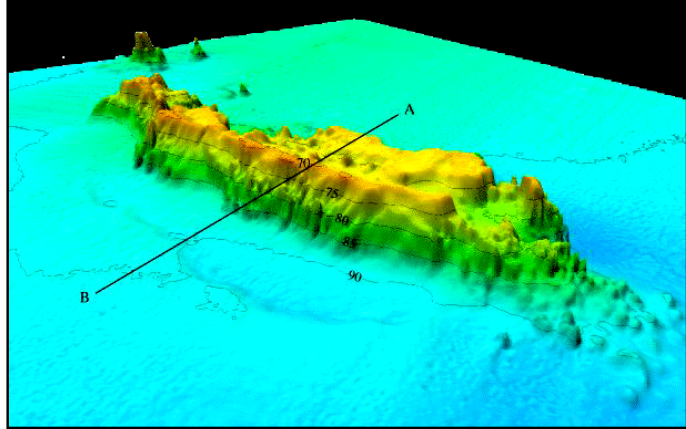


Figure 1. Multibeam bathymetry image of pinnacle reefs off the coast of Alabama/Mississippi. (USGS 2000)

The Pinnacle Trend exhibits a range of community diversity and density governed by local conditions. Two major factors affecting a community are elevation above the seafloor and the nature of the substrate itself. Organisms near the bottom of a feature, close to the surrounding soft substrate, are frequently enveloped in the nepheloid layer. As a result, light is blocked and sediments settle on the surfaces of the organisms. These conditions only allow the existence of a community of low diversity and low density. Only animals that need little to no light and can grow tall or settle on vertical surfaces are able to survive. On pinnacles with low relief (less than 2 meters), the nepheloid layer dominates.

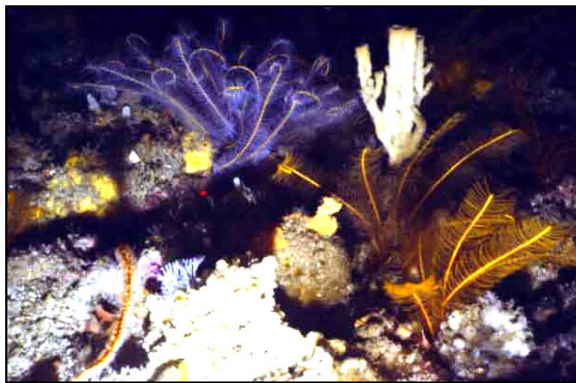


Figure 2. The Minerals Management Service has studied and protects the Pinnacle Trend, a grouping of rocks and ridges that provides a hard-bottom oasis for animals like these sea fans, octocorals, feather stars, and basket stars. (Photo by CSA/MMS)

Above the nepheloid layer, on taller pinnacles, the nature of the substrate gains more influence. Little light penetrates these depths (53-110 meters), supporting only sparse coralline algae and rare corals. But this does not mean that few animals live here. A wide range of animals that do not require light for growth are able to flourish on these Offshore Oasis habitats. The pinnacles are drowned coral reefs with variable surfaces. Vertical sides have low colonization, but horizontal flats are much more densely populated. Some pinnacles even have large flat tops produced by erosion in a past age. Pinnacles with flat tops have a dense population of ahermatypic corals, sea whips, sea

fans, sponges, and other invertebrates and fish. The tallest pinnacles typically have the richest communities because these substrates are farthest above the nepheloid layer and closest to the surface, giving them sunlight and cleaner water. Some pinnacles have complex surfaces honeycombed by overhangs and openings supporting a large diversity and density of organisms. Others are smooth and featureless with correspondingly fewer animals.

Because these features support flourishing communities and provide valuable fishery habitat, the Minerals Management Service (MMS) protects the Pinnacle Trend area with a stipulation. According to the provisions of the stipulation, prior to any drilling activities or placement of any structure for exploration or development on a lease, the lessee will submit to MMS a survey report containing a bathymetry map prepared using remote-sensing techniques and indicating the presence or absence of pinnacles that could be impacted by the proposed activity. If it is determined that pinnacles may be adversely affected by any proposed activity, the lessee may be required to take protective measures that include the relocation of operations and monitoring to assess the impacts of the activity on the Pinnacle Trend area.

Studying the Pinnacles

Researchers have led important contract studies on behalf of MMS and various other agencies like the USGS, which are responsible for managing these extraordinary habitats. Major study programs accomplished bathymetric and habitat reconnaissance; side-scan mapping; and oceanographic, physical, and biological characterization and monitoring of pinnacle features and their hard-bottom communities. These investigations have provided the site locations, bathymetric charts, physical background, and macrofauna framework for the current study of pinnacle reef demersal fish communities currently being conducted by the United States Geological Survey (USGS). This current USGS fish investigation complements another large, MMS-funded research study known as the



Figure 3. Photograph of a rougtongue bass (*Pronotogrammus martinicensis*). This small pelagic bass is generally found in depths of 100 to 200 m, but schools have been reported associated with coral reefs and topographic features such as the Pinnacles. (photo by Weaver)

"Mississippi/Alabama Pinnacle Trend Ecosystem Monitoring Final Synthesis Report," which focuses on the significance of vertical heights of the features and variability in the nature of communities from smaller relief features to the larger pinnacles. The USGS study focuses on the feeding habits and food web structure of the pinnacles' deep reef fishes

(Figure 3). To accomplish this research study, USGS conducted six research cruises from 1997 to 2000. Methods for collecting data included the use of a remote operating vehicle (ROV) (Figure 4),

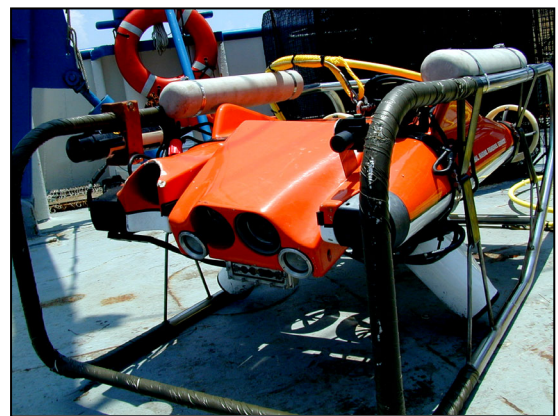


Figure 4. Remote operating vehicles (ROV) are often used to collect biological data in deepwater, where SCUBA cannot be used because of the deep depths. (photo by Weaver)

videography, and still photography. During this investigation scientists were able to document 146 species of fish either from collected specimens or videotape. Sixty-seven of the species documented are considered to be among the reef-fishes of the Caribbean reef-fish faunal type. Thirty-two species are "facultative" reef fish, which have a broad distribution on the Continental Shelf, and 47 species are bottom dwellers and shelf dwellers, and a small number are pelagic and deep midwater animals. These groups of fishes represent a full range of tropical Caribbean reef and reef-associated organisms.

The reef fish were organized into assemblages and characterized on the basis of their "biotope" preference. Through videotape analyses of the fish community composition, scientists were able to determine the different biotope types associated with the pinnacle reefs: reef flat top, reef crest, reef face, reef base, talus zone, and circum-reef sediment apron. The species composition or numerical abundances were different for each biotope and are illustrated in Figures 5 and 6.

Studies like this are critical to understanding the natural variability of these communities and their sensitivity to man-induced impacts. This information database will be important in the monitoring of stipulation effectiveness and establishment of future protective measures.

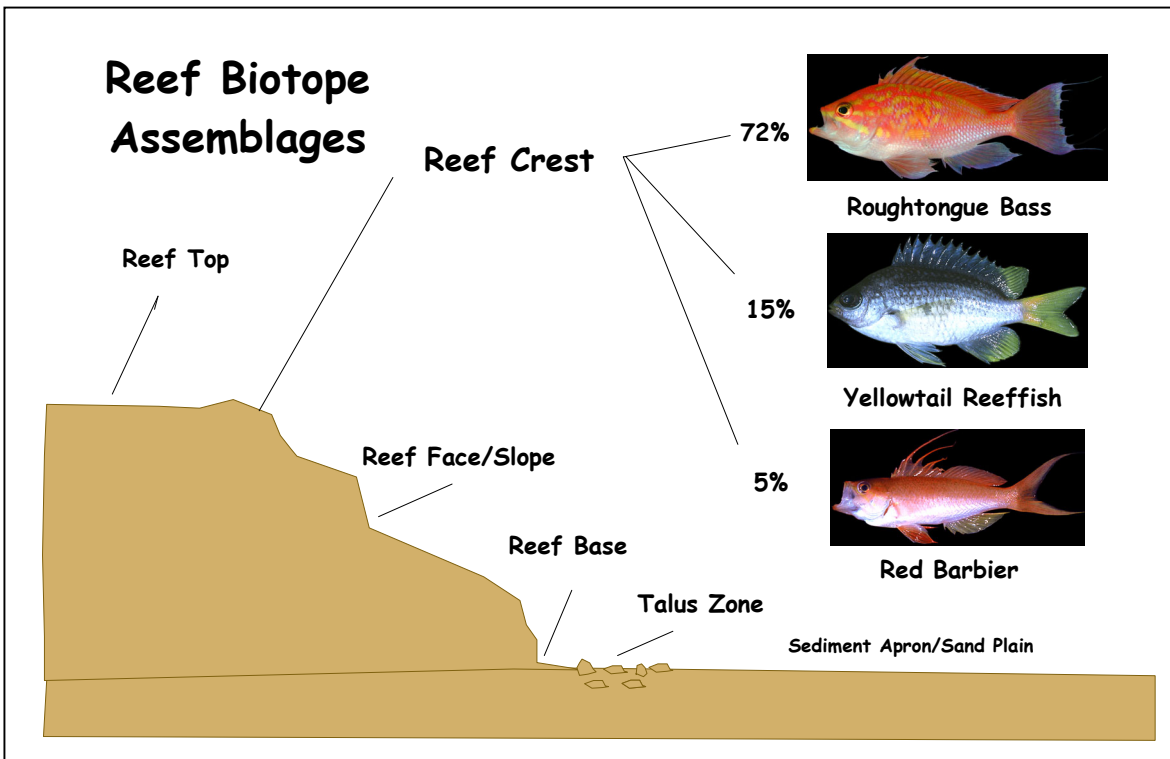
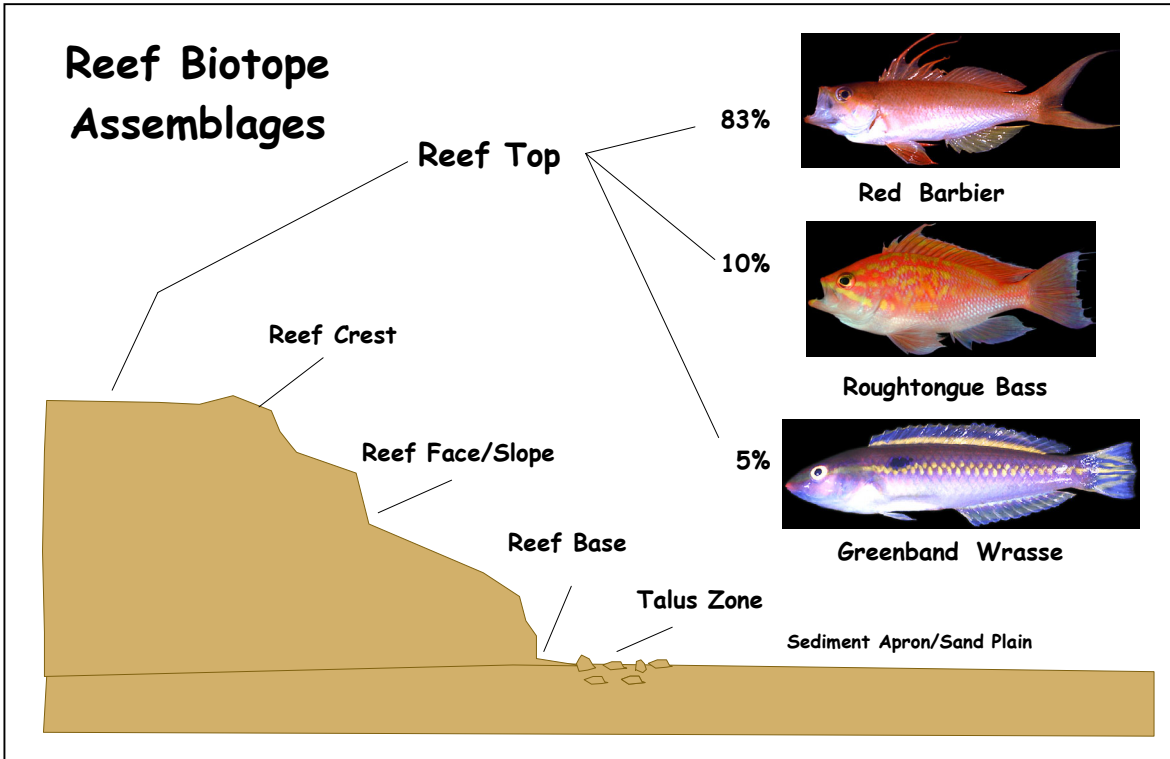


Figure 5. Comparative pinnacle reef fish composition by biotope: Reef top and reef crest (illustration by Weaver, USGS, 2000).

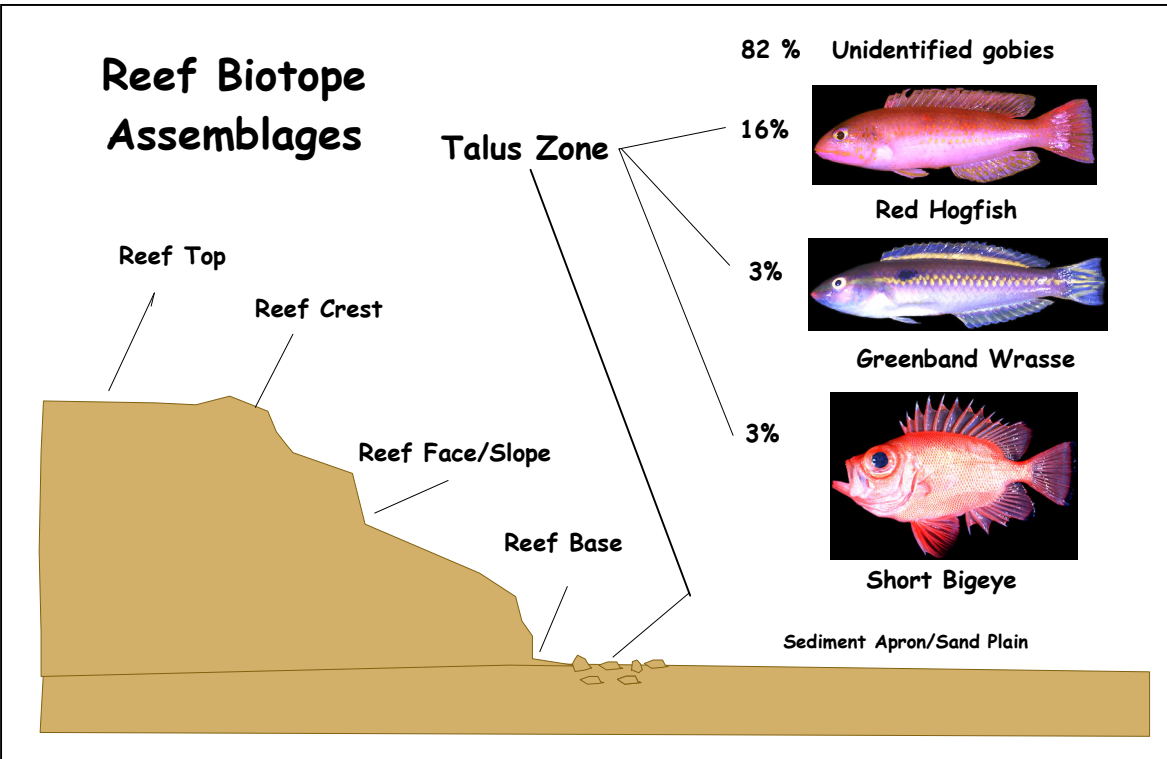
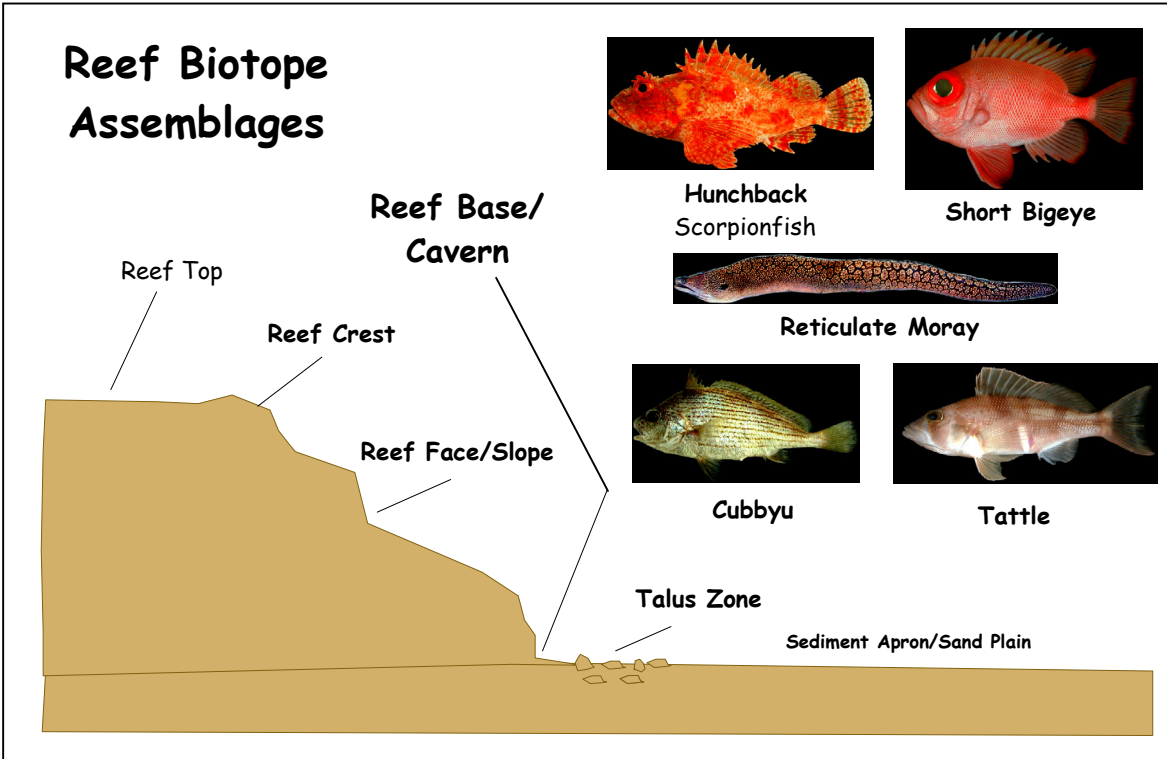


Figure 6. Comparative pinnacle reef fish faunal composition by biotope: Talus zone and reef base/cavern (illustration by Weaver USGS, 2000).

CLASS EXERCISE 1

LIFE IN THE FOOD CHAIN

Charting Marine Food Chains

Materials:

- Poster boards or butcher paper
- Yardsticks
- Magic Markers
- Construction paper
- Scissors
- Illustrated references on marine life
-

Procedures:

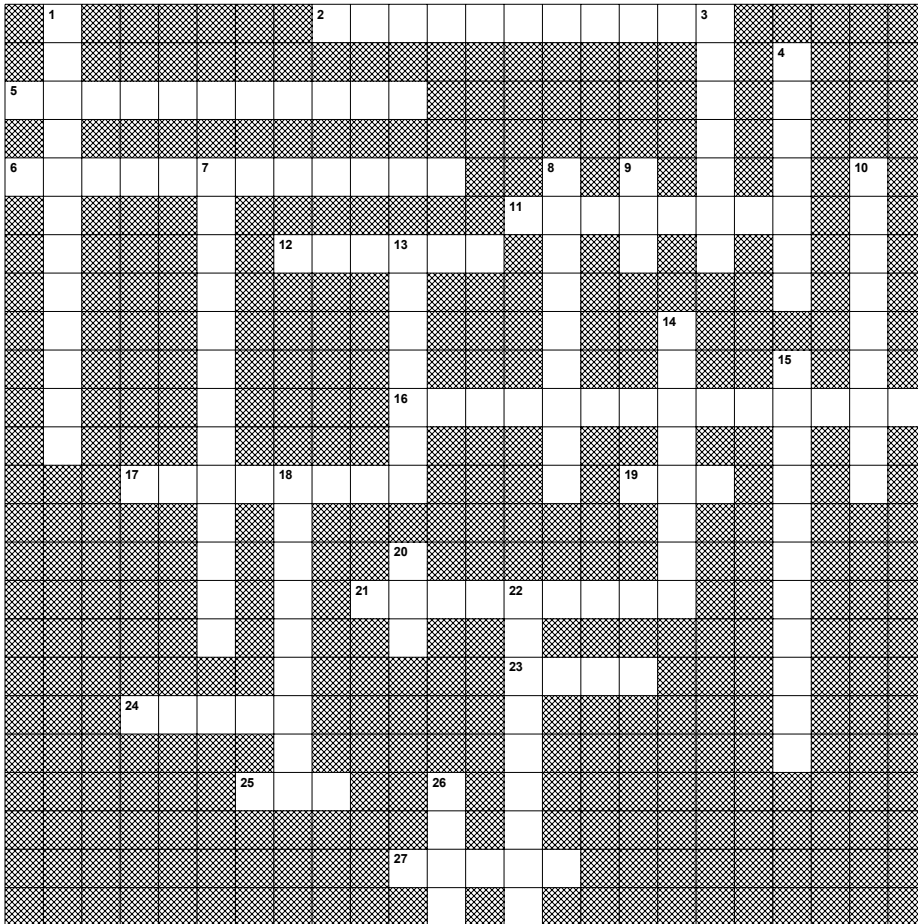
1. Divide students into groups and have each group develop a chart using poster boards or large sheets of paper.
2. Have students divide charts into four vertical columns and five horizontal spaces using yardsticks and magic markers. Each chart should have the following four column headings written in large, bold letters across the top:

Production/ Consumption	Trophic Level Number	Herbivore or Carnivore	Example
Producers			
Primary Consumer			
Secondary Consumer			
Tertiary Consumer			
Quaternary Consumers			

3. Beneath the first column head, label each of the five production/consumption roles, running down the left margin.
4. Draw and cut out illustrations of animals identified in this workbook. Add additional organisms using other references in order to fill out the chart. Consider the placement and role of humans.
5. Place the various animals' cutouts in the appropriate "Example" box on the chart. Identify primary producers, primary consumers, secondary consumers, etc.

Review Exercise

Crossword Puzzle



- chemosynthetic
- community
- complex
- currents
- depth
- ecosystem
- Flower Gardens
- gas
- Gulf of Mexico
- habitat
- impacts
- light
- live bottoms
- MMS
- mud
- nepheloid
- oil
- pinnacle
- reef
- relief
- rock
- sediment
- stipulations
- substrate
- temperature
- topographic
- turbidity

ACROSS

2. "Offshore Oasis" features in the western Gulf of Mexico.
5. Low relief areas in the east-central Gulf of Mexico with hard substrates and reef communities.
6. US Mediterranean Sea.
11. Matter deposited by water.
12. The changes in elevation of a surface.
16. Organisms that use sulfur dioxide or methane gas for their metabolism.
17. Water movement that transports larvae and resuspends bottom sediments.
19. One of the major products regulated by the MMS from the Gulf of Mexico.
21. Bottom of the sea.
23. Sparse substrate in the Gulf of Mexico that harbors complex, thriving communities.
24. The depth of penetration by this limits the growth of many organisms.
25. Minerals Management Service.
27. Distance below the surface of the water.

DOWN

1. Mechanism for the protection of habitats by the Minerals Management Service.
3. Adjective for a habitat with overhangs, caverns, and rough surfaces.
4. The physical surroundings where organisms live.
7. Location of high diversity, living coral reef in the Gulf of Mexico.
8. Bottom-water layer of suspended sediment.

9. One of the major products regulated by the MMS from the *Gulf of Mexico*.
10. A group of organisms living in a single habitat.
13. Effects on habitats in the *Gulf of Mexico*.
14. A point or ridge of rock that is thrust up higher than the surrounding substrate.
15. Physical factor that limits the northward colonization of tropical marine organisms.
18. All living organisms in a community, their habitat, and physical factors that affect them.
20. Soft sediment that covers most of the *Gulf of Mexico*.
22. Low visibility caused by suspended matter in the water.
26. A hard substrate that stands above the seafloor and usually has organisms growing on it.

MINERALS MANAGEMENT SERVICE MISSION STATEMENT

The Minerals Management Service (MMS), a bureau within the Department of the Interior, pursues research on the marine environment as part of its responsibility to manage the mineral resources on the Outer Continental Shelf (OCS) in an environmentally sound and safe manner. Various laws and regulations protect the environment; the National Environmental Policy Act and the Outer Continental Shelf Lands Act cover most activities in the marine environment.

The MMS funds studies looking at the possible effects of human activities on environmental aspects of the marine ecosystem. This information, combined with data that continue to be collected, will make sure that MMS has the information needed to safeguard the environment.

**For copies of this Teaching Tool contact:
1-800-200-GULF
<http://www.gomr.mms.gov>**

**You can also access this Teacher's Companion
through the WWW at:
<http://www.mms.gov>**

- Select:**
- ⇒ **Managing Offshore Resources**
 - ⇒ **Gulf of Mexico OCS Region**
 - ⇒ **Lagniappe (Educational Resources)**

GLOSSARY OF TERMS

Ahermatypic: Organisms that do not contribute significantly to the building of coral reefs.

Anemones: Solitary polyps akin to corals but with no skeletal structure; catch prey with stinging tentacles surrounding the mouth.

Antipatharians: "Black Coral" and other corals with slender, branching colonies and horny skeletons.

Basketstars: Echinoderms akin to brittlestars with a flattened central disc and five highly branched arms that bend and coil in any direction. Spread their arms to feed on plankton, usually at night.

Bathymetry: Measurements of water depth; can be depicted on a map.

Benthic: Refers to those plants and animals that live on the bottom of a lake or sea.

Biomass: The weight of living organisms per unit of area or volume of habitat.

Biotope: An ecological niche, or restricted area, or the environmental conditions that are suitable for certain plants and animals.

Bivalves: Molluscs such as oysters, clams, and scallops that typically have two shells encasing the body.

Black corals: Tough, wiry corals with horny skeletons that form slender, branching colonies; antipatharians.

Brittlestars: Echinoderms akin to basketstars with a flattened central disc and five highly flexible arms used for locomotion and, in some, suspension feeding.

Bryozoans: Tiny, polyp-like, colonial animals individually called zooids; usually forming minute, rigid, adjoining calcium carbonate compartments with an opening in the surface of one end for feeding.

Calcium carbonate: The chalky material that makes up bone and structural elements of many animals (for example, shells of molluscs and the skeletons of hard corals).

Chemosynthetic: Refers to organisms that use hydrogen sulfide or methane gas, rather than photosynthesis, as their primary energy source.

Coralline algae: An encrusting red algae that incorporates calcium carbonate into its cell walls.

Crinoids: Echinoderms superficially resembling ferns. Arms branch to form a crown with 10 - 200 suspension feeding limbs. A central calyx is supported by a stalk with cirri (sea lilies) or simply bears cirri (featherstars). Cirri are wiry, prehensile tentacles for grasping and locomotion.

Deglaciation: Removal of glaciers, as in melting, causing sea level to rise.

Density: In biology, refers to the number of organisms per unit of area of a habitat.

Diapir: A geologic formation in which a mobile underlying layer, such as salt, has pushed up through a brittle overlying layer, such as sedimentary rock, forming a crest of rock that may be exposed on the surface.

Diversity: An expression of the number of different species present in a habitat.

Drowned reefs: Natural rock structures composed of the remains of reef-building organisms but no longer harboring reef-building organisms because of deep submergence and inadequate light penetration to the structure.

Echinoderms: A group of marine invertebrates characterized by bodies with penta-symmetry, flexible tube feet operated by water pressure, and calcified plates internally, in the skin, or both. This group includes featherstars, brittlestars, sea stars, sea urchins, and sea cucumbers.

Encrusting organisms: Plants and animals that grow in a layer tightly adhering to, and conforming to, the shape of the substrate or another organism.

Facultative: Not restrictive or capable of existing in more than one medium; bacteria that can exist aerobically (with oxygen) or anaerobically (without oxygen) are an example.

Featherstars: Crinoid echinoderms without a central stalk. (See crinoids).

Filter feeders: Animals that consume plankton and bacteria by straining water through some part of their body.

Gastropods: Molluscs, usually with a spiral shell, e.g., snails. Also nudibranchs (marine snails without a shell) and sea hares (large marine snails with a greatly reduced shell).

Gorgonians: Octocorals that typically exhibit an upright, flexible growth with a horny, axial skeleton (of gorgonon) and polyps with eight tentacles. Include sea whips, sea fans, and red coral.

Habitat: The specific places or type of environment in which an organism or biological population normally lives.

Habitat complexity: Variation of the physical structure of an environment ranges from simple to complex, that is, simple equals smooth, straight, steep, barren, solitary; complex equals rough, overhangs, holes, horizontal surfaces, layers of growth, group of habitats.

Hard bottoms: Areas of the seafloor composed of rock or other hard substrate.

Hard corals: Those corals with calcareous skeletons in various shapes depending on the species; often form reefs and islands.

Hermatypic: Organisms that incorporate calcium carbonate into their structures and occur in large enough quantities to contribute significantly to reef-building.

Heterotrophy: The consumption of organic matter (usually other plants and animals) to support nutrition.

Hydroids: A large group of animals akin to corals. Hydroids are very small polyps that frequently form colonies resembling seaweed. Colonies may be sheathed in a

tough cuticle and typically bear two to four different types of polyps for feeding, defense, and reproduction.

Hydrothermal vents: Faults in the seafloor where hot fluids and gasses issue and vent communities may exist. (Not found in the Gulf of Mexico).

Invertebrates: Animals with no backbone. Of the animal species on Earth, 95 percent are invertebrates.

Loop Current: A large mass of tropical Caribbean water that enters the Gulf of Mexico through the Yucatan Channel, makes a broad clockwise circuit, and exits through the Straits of Florida.

Molluscs: A group of soft-bodied animals, terrestrial, marine, and freshwater, usually partly or wholly enclosed within a calcium carbonate shell; includes snails, clams, and squid.

Nepheloid layer: Bottom waters in which soft sediments are resuspended up to 20 meters from the seafloor by currents. Some locations experience this almost constantly, others only sporadically.

Nodules: Shells and other materials cemented together into clumps by coralline algae.

Octocorals: Corals with flexible skeletons and polyps bearing eight tentacles.

Partly drowned reefs: Natural rock structures composed of the remains of reef-building organisms, but because of deep submergence and lowered levels of light, typical reef-building organisms other than coralline algae do not thrive.

Petroleum seeps: Faults on the seafloor where migrating oil and gas leave the bottom and may reach the sea surface. These areas may support chemosynthetic communities.

Photosynthesis: Process by which organisms use light energy and carbon dioxide, via chlorophyll, to produce carbohydrates for metabolism.

Relict Coral Reefs: a persistent remnant of an otherwise extinct reef.

Relief: Elevations of a substrate above the surrounding seafloor.

Resuspension: Lifting and mixing of particles, for example silt and clay; from the seafloor into the water column by currents or wave action; can cause a Nepheloid layer.

Sea cucumbers: Echinoderms with an elongated cylindrical shape and rough skin, having a mouth on one end and anus on the opposite end.

Sea squirts: Tunicates, ascidians; globular shaped, having an incurrent siphon and an excurrent siphon with a basket-like sieve in between to collect plankton.

Sea urchins: Echinoderms with rigid spines covering a spherical body, having a calcified internal shell called a test with openings at top and bottom for the anus and mouth, respectively.

Sea stars: Echinoderms with a flattened body and typically five flexible arms used for locomotion and feeding. Use their strong arms and many tube feet to open the shells of molluscs.

Sea whips: Gorgonians with a long, thin, unbranched, flexible axial skeleton bearing polyps with eight tentacles.

Seafans: Gorgonians with very small polyps and a community structure that grows upright in a single plane. Vertical branches of some are interconnected by horizontal bridges, increasing surface area and forming a fine mesh.

Seafloor: Bottom of the ocean, substrate that composes the benthic environment.

Sedimentation: The process of particles suspended in the water column settling on the substrate and its attached living organisms.

Soft bottoms: Areas of the seafloor composed of mud, sand, and gravel.

Soft corals: Those corals characterized by the polyps imbedded in a gelatinous or leathery sheath, often forming fans and bushes. They do not have a calcareous skeleton as do hard corals.

Solitary corals: Hard or soft coral polyps that live singly, not forming colonies.

Sponges: Primitive marine animals composed of individual cells not organized into tissues. Variable shape draws water in through many pores, filters it, and expels it through large opening(s).

Stipulations: Measures used by the **Minerals Management Service** to protect marine habitats and organisms. Includes requirements attached to lease agreements with the offshore oil industry.

Substrate: Literally, the "layer below"; the bottom of the ocean, upon which organisms grow.

Suspension feeding: Collecting and consuming particles and plankton mixed into the water column.

Tube worms: Numerous species of marine worms that form and live in tubes. The tube is secreted of calcium carbonate or made of mud, sand, and debris glued together by mucous. The worm may draw a current through the tube and/or extend an appendage or the front of its body to feed. In the case of chemosynthetic communities, they are highly specialized worms with chemosynthetic bacteria.

Turbidity: The restriction of light and vision through water caused by the suspension of particle or plankton.

Vestimentiferans: Large tubeworms living in thick colonies around deep hydrothermal vents in some oceans, including the Pacific. The Gulf of Mexico species are thought to be the oldest animals on earth.

Zooxanthellae: Photosynthetic algae that live in the tissues of animals, such as corals and clams, providing a significant nutritional benefit.



The Department of the Interior Mission

As the Nation's principal conservation agency, the Department of the Interior has responsibility for most of our nationally owned public lands and natural resources. This includes fostering sound use of our land and water resources; protecting our fish, wildlife, and biological diversity; preserving the environmental and cultural values of our national parks and historical places; and providing for the enjoyment of life through outdoor recreation. The Department assesses our energy and mineral resources and works to ensure that their development is in the best interests of all our people by encouraging stewardship and citizen participation in their care. The Department also has a major responsibility for American Indian reservation communities and for people who live in island territories under U.S. administration.



The Minerals Management Service Mission

As a bureau of the Department of the Interior, the Minerals Management Service's (MMS) primary responsibilities are to manage the mineral resources located on the Nation's Outer Continental Shelf (OCS), collect revenue from the Federal OCS and onshore Federal and Indian lands, and distribute those revenues.

Moreover, in working to meet its responsibilities, the **Offshore Minerals Management Program** administers the OCS competitive leasing program and oversees the safe and environmentally sound exploration and production of our Nation's offshore natural gas, oil and other mineral resources. The MMS **Minerals Revenue Management** meets its responsibilities by ensuring the efficient, timely and accurate collection and disbursement of revenue from mineral leasing and production due to Indian tribes and allottees, States and the U.S. Treasury.

The MMS strives to fulfill its responsibilities through the general guiding principles of: (1) being responsive to the public's concerns and interests by maintaining a dialogue with all potentially affected parties and (2) carrying out its programs with an emphasis on working to enhance the quality of life for all Americans by lending MMS assistance and expertise to economic development and environmental protection.