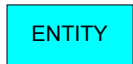
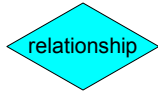


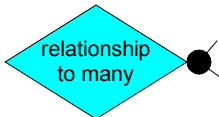
LEGEND: legend for the BOM Visio documents.



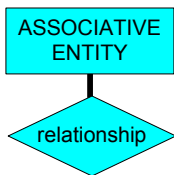
- Entity. An object that is of interest to the registry. In most BOM, these would only be real world objects, but for the SEER registries, entities may be concepts.



- Relationship. A verb phrase describing how the multiple entities are conceptually related.



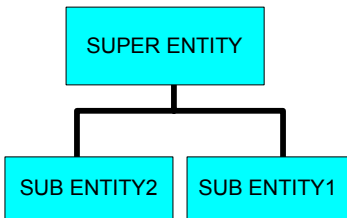
- Relationship with OR connector. A shorthand notation for the relationship between one entity and multiple other entities. The relationship must be the same for all OR connected entities. For example, 'HEALTH RECORD fulfills ABSTRACT REQUEST or SPECIFIC RECORD REQUEST' means health record fulfills abstract request and health record fulfills specific record request. A single relationship may have many OR connectors.



- Relationship with Associative Entity. A relationship that can be is equivalent to an entity. For example, 'PERSON has knowledge of PATIENT' is an 'INFORMANT FOR PATIENT', so information for patient is an associative entity.



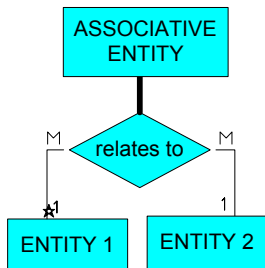
- Line signifying which relationship diamond and entities are part of a relationship. The '*' is a sentence anchor which is attached to an entity. The '1' and 'M' represent the cardinality associated with a relationship, how many entities are needed to have one instance of the relationship and how many instances of a relationship a single entity may participate in.



- Supertype/Subtype. A single entity (Super type) that may be partitioned into multiple categories (Sub type). This is done when relationships are true for only some subtypes or when the attributes of one subtype vary from another.



- Scope line. A thick curved line that arcs around entities or relationships to signify items that are considered outside the scope of the Data Management Project but are related to other objects of interest.



- Example. The relationship represented here can be read (starting at the sentence anchor) 'ENTITY 1 relates to ENTITY 2' which is the same as 'ASSOCIATIVE ENTITY'. In order to have 1 such relationship, there must be one and only one ENTITY 1 and one and only one ENTITY 2. Both ENTITY 1 and ENTITY 2 may participate in multiple relationships of this type.

LEGEND: legend for the BOM Visio documents.

Rectangles and diamonds in the BOM are color coded to show the information group they belong to.

WHITE = Core concepts that affect many other information areas or Auxiliary data that is not specific to particular instances of related entities (i.e. Type of, Format, and Ethnicity)

BLUE = Records coming into the Registry and associated information

Purple = Relationships common to Records and Patient Sets

RED = Patient Set

YELLOW = Follow-Up and Follow-Back and associated info

GREEN = Getting information out of the Registry and associated information