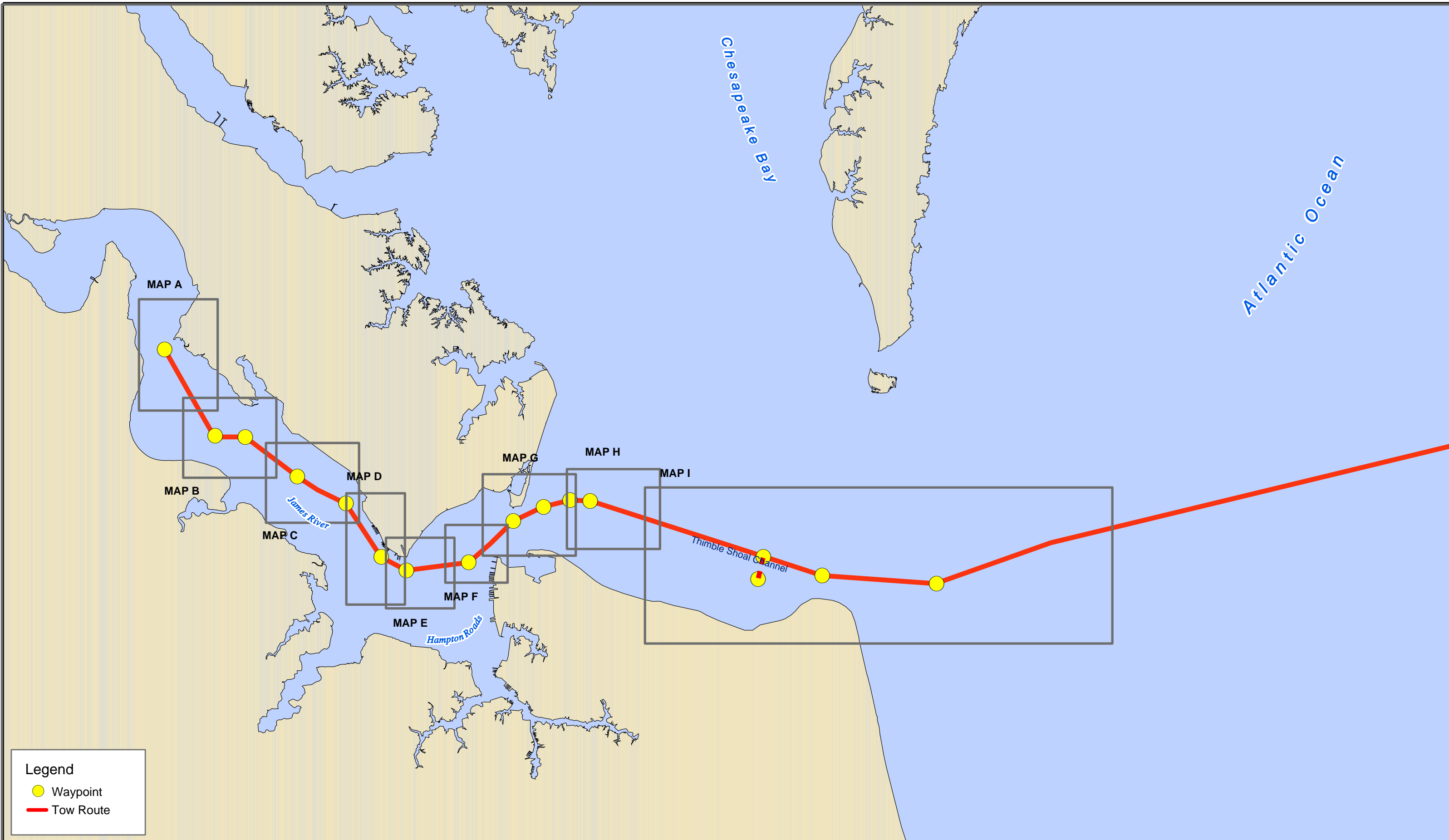
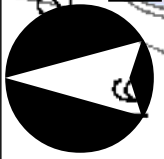
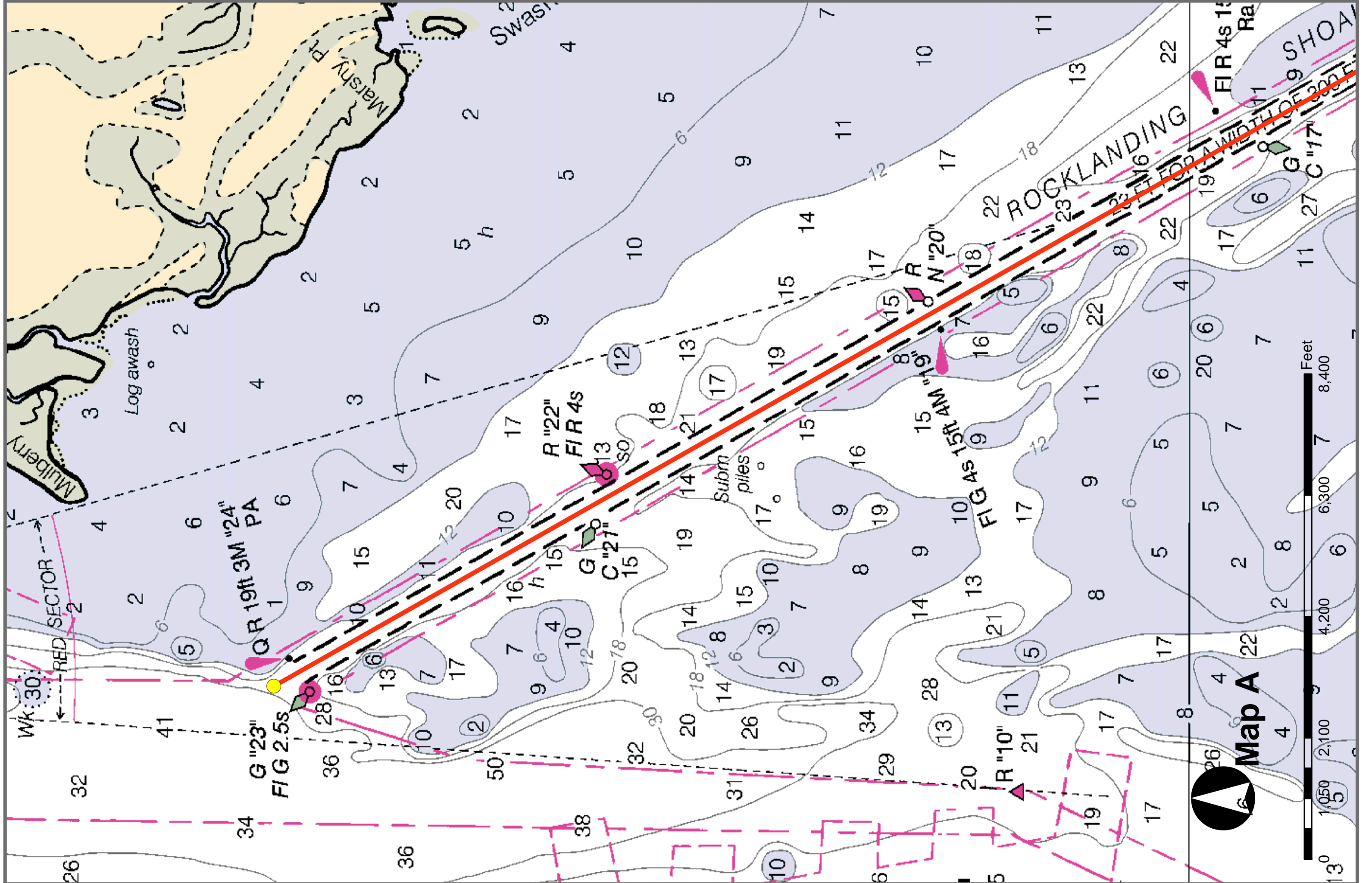


**APPENDIX B
TOW ROUTE**

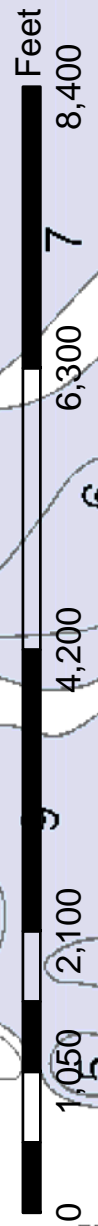


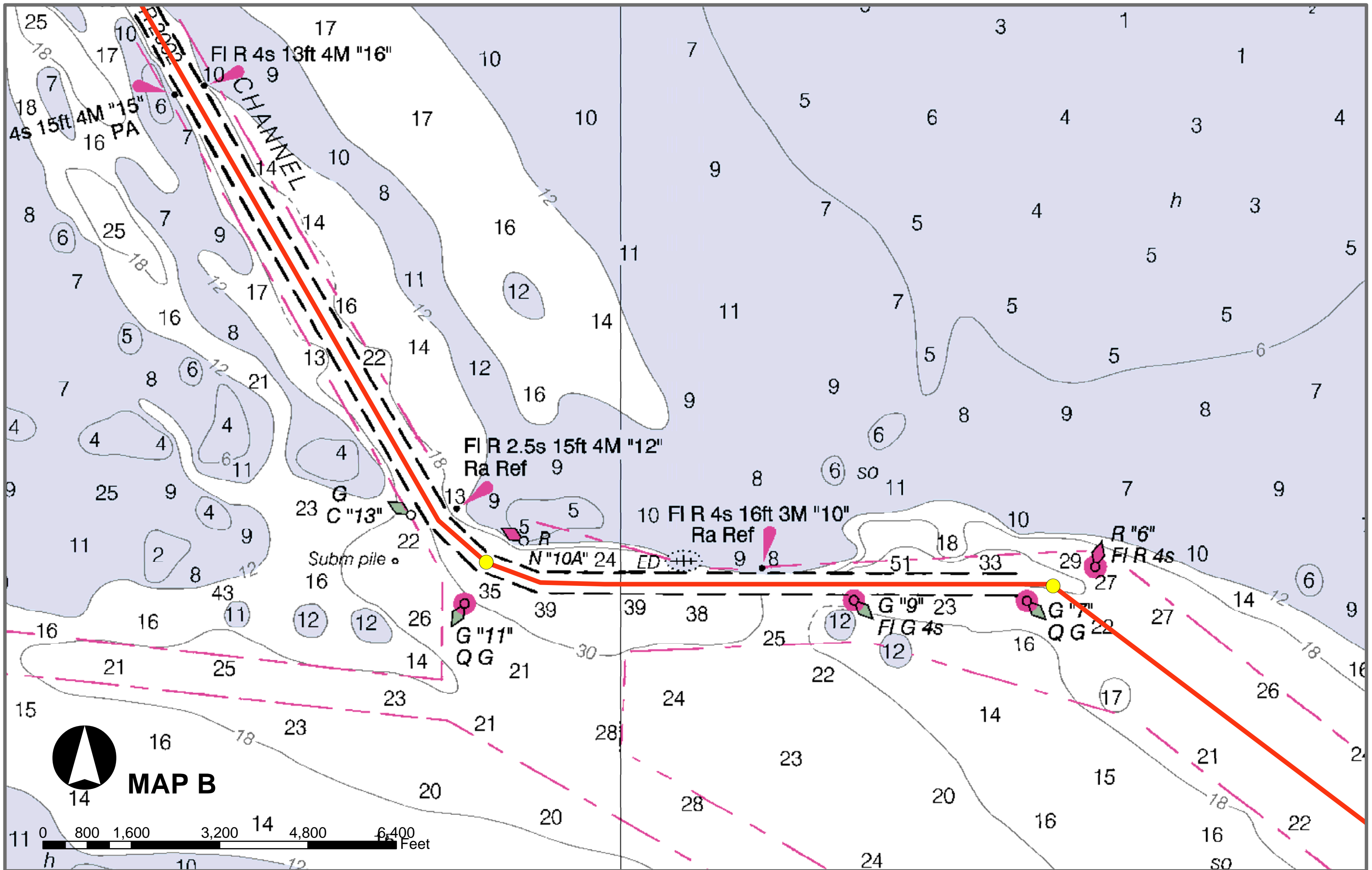
Index Map - Tow Route

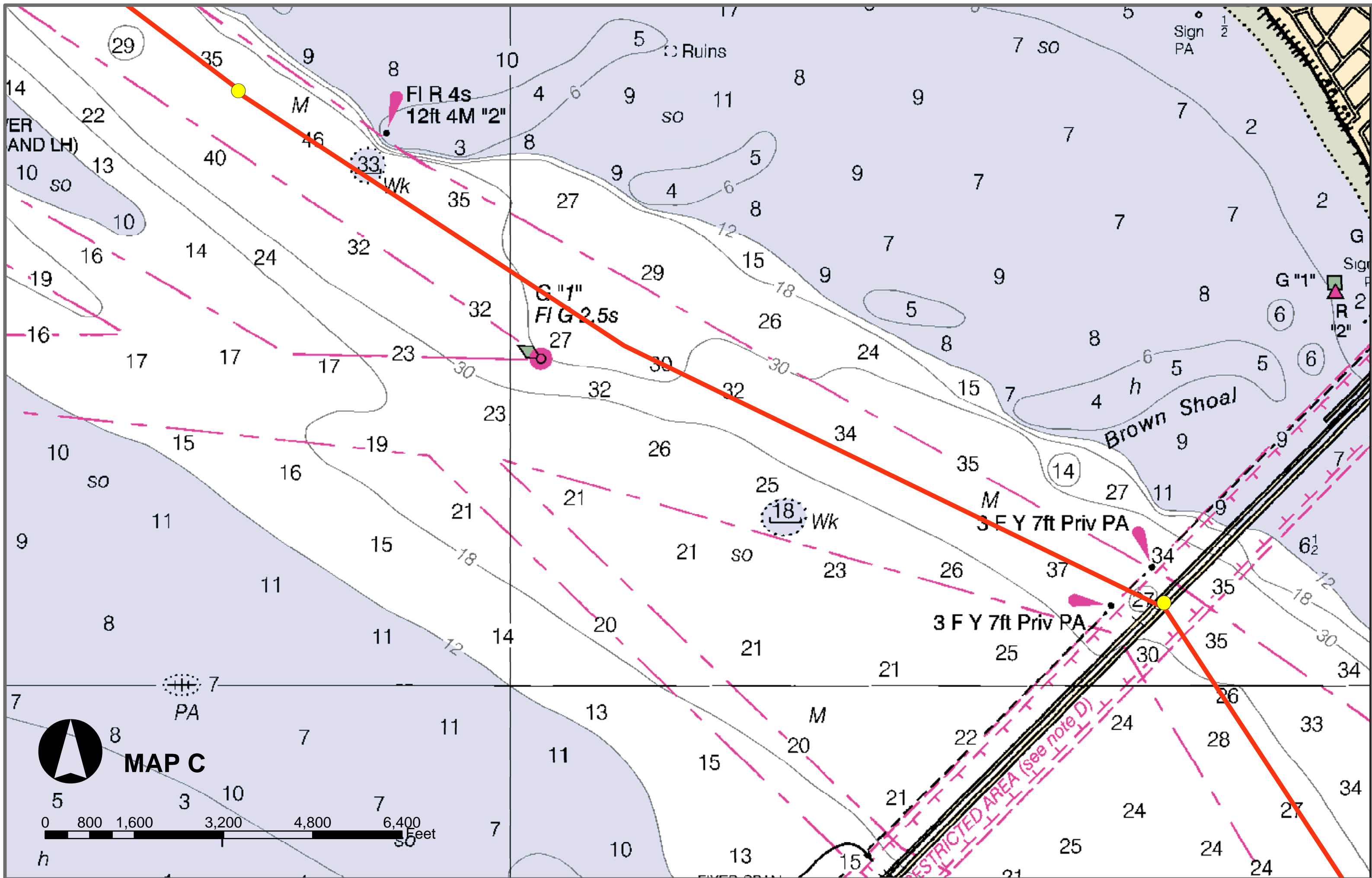
Source: NOAA Navigational Charts 2002-2003.



Map A 22

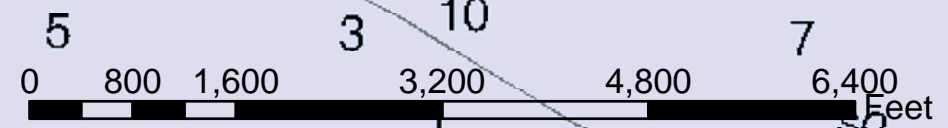




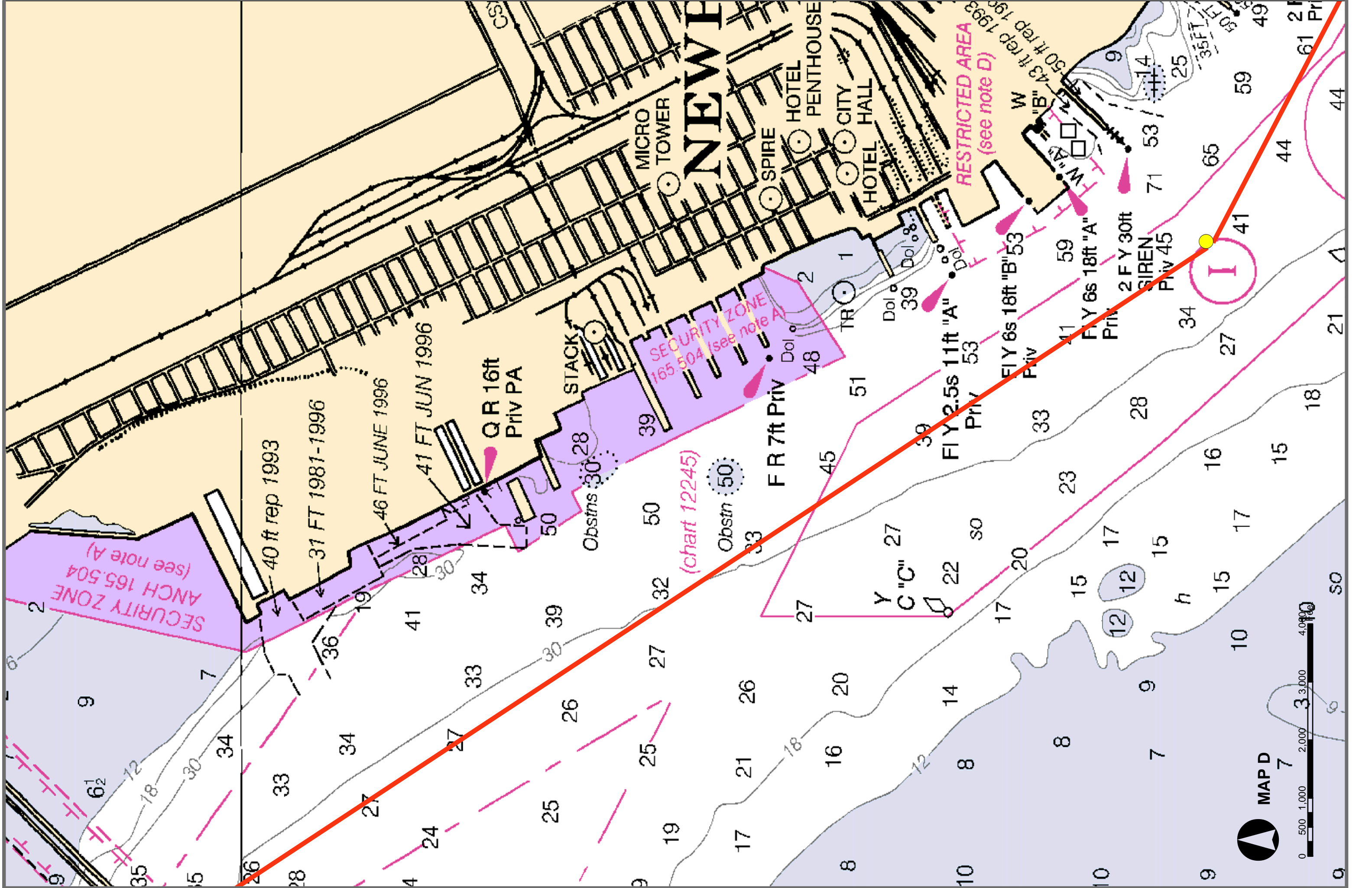


ER
AND LH)

MAP C



RESTRICTED AREA (see note D)



NEW YORK

MICRO TOWER

SPIRE

HOTEL PENTHOUSE

CITY HALL

HOTEL HALL

SECURITY ZONE
ANCH 165.504
(see note A)

SECURITY ZONE
165.504 (see note A)

RESTRICTED AREA
(see note D)

(chart 12245)

QR 16ft
Priv PA

F R 7ft Priv

FLY 2.5s 11ft "A"
Priv 53

FLY 6s 18ft "B" 53
Priv 41

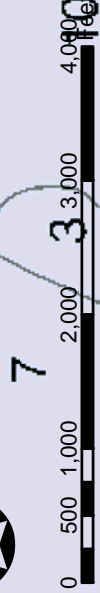
FLY 6s 18ft "A"
Priv 59

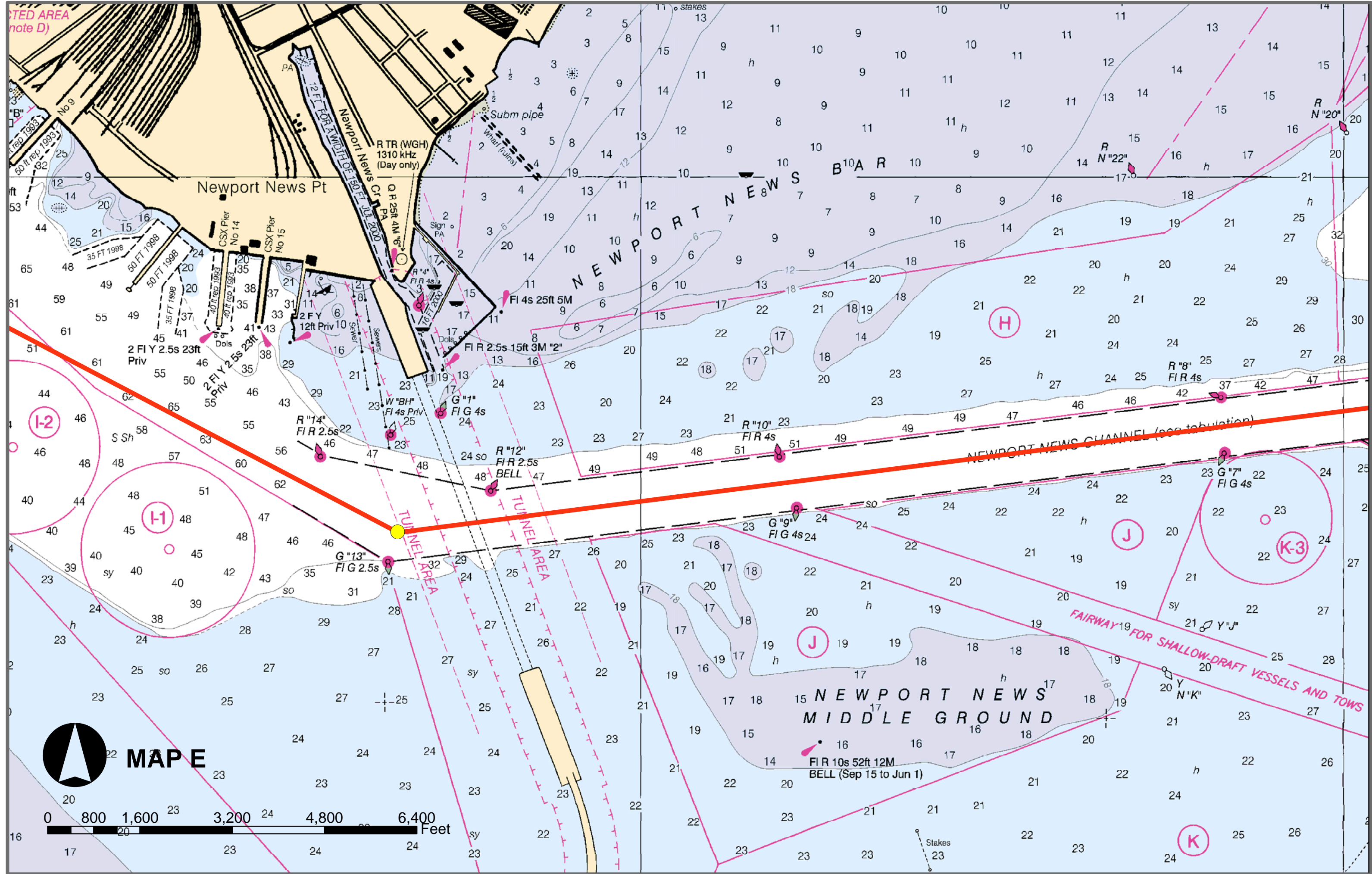
2 F Y 30ft
SIREN
Priv 45

I



MAP D





RESTRICTED AREA
(note D)

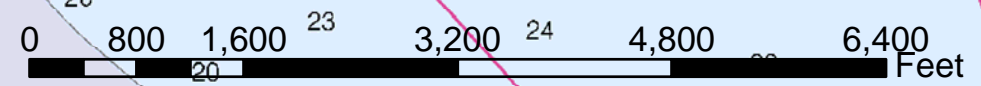
Newport News Pt

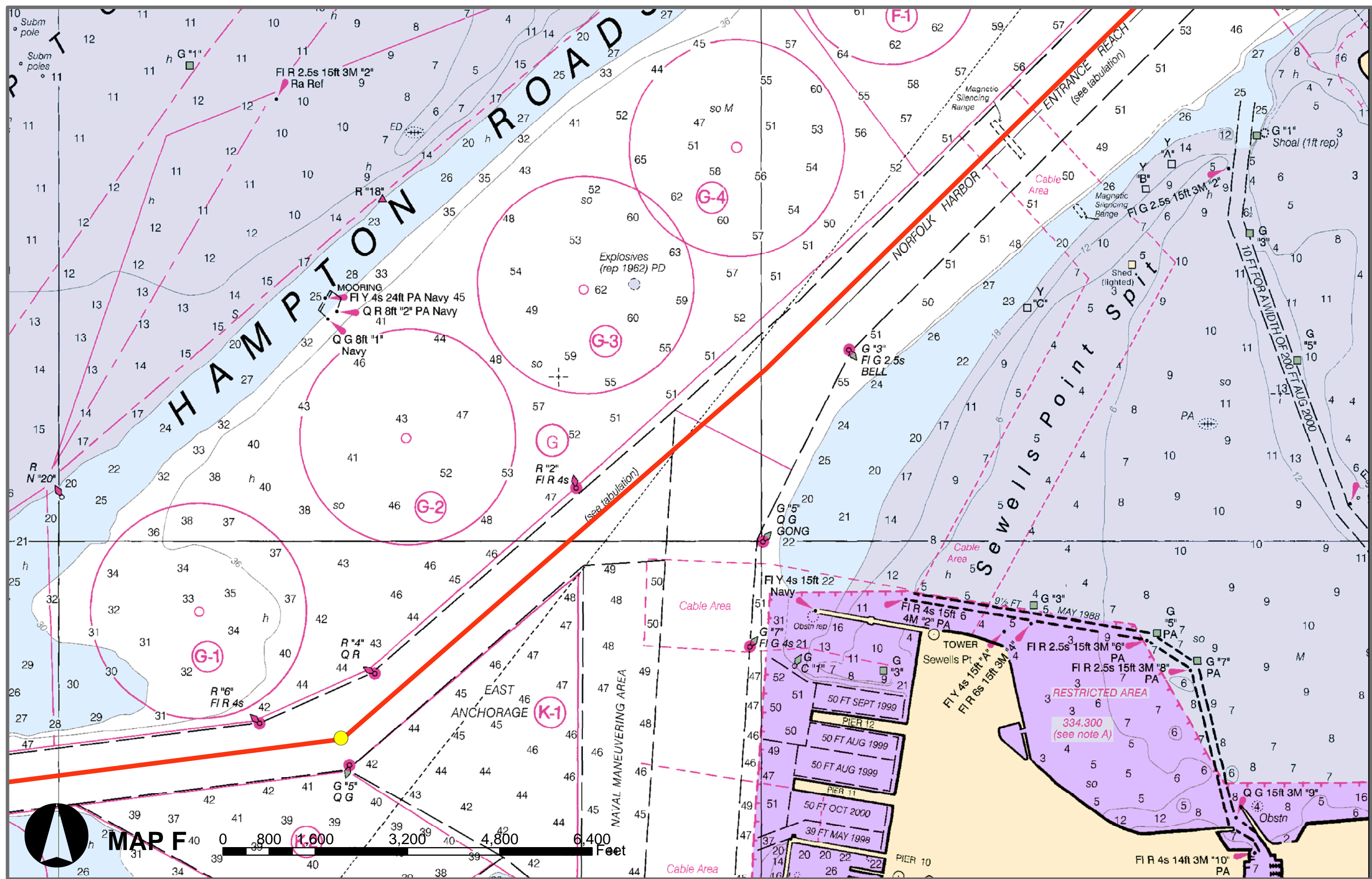
NEWPORT NEWS

NEWPORT NEWS
MIDDLE GROUND

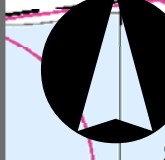
NEWPORT NEWS CHANNEL (see tabulation)

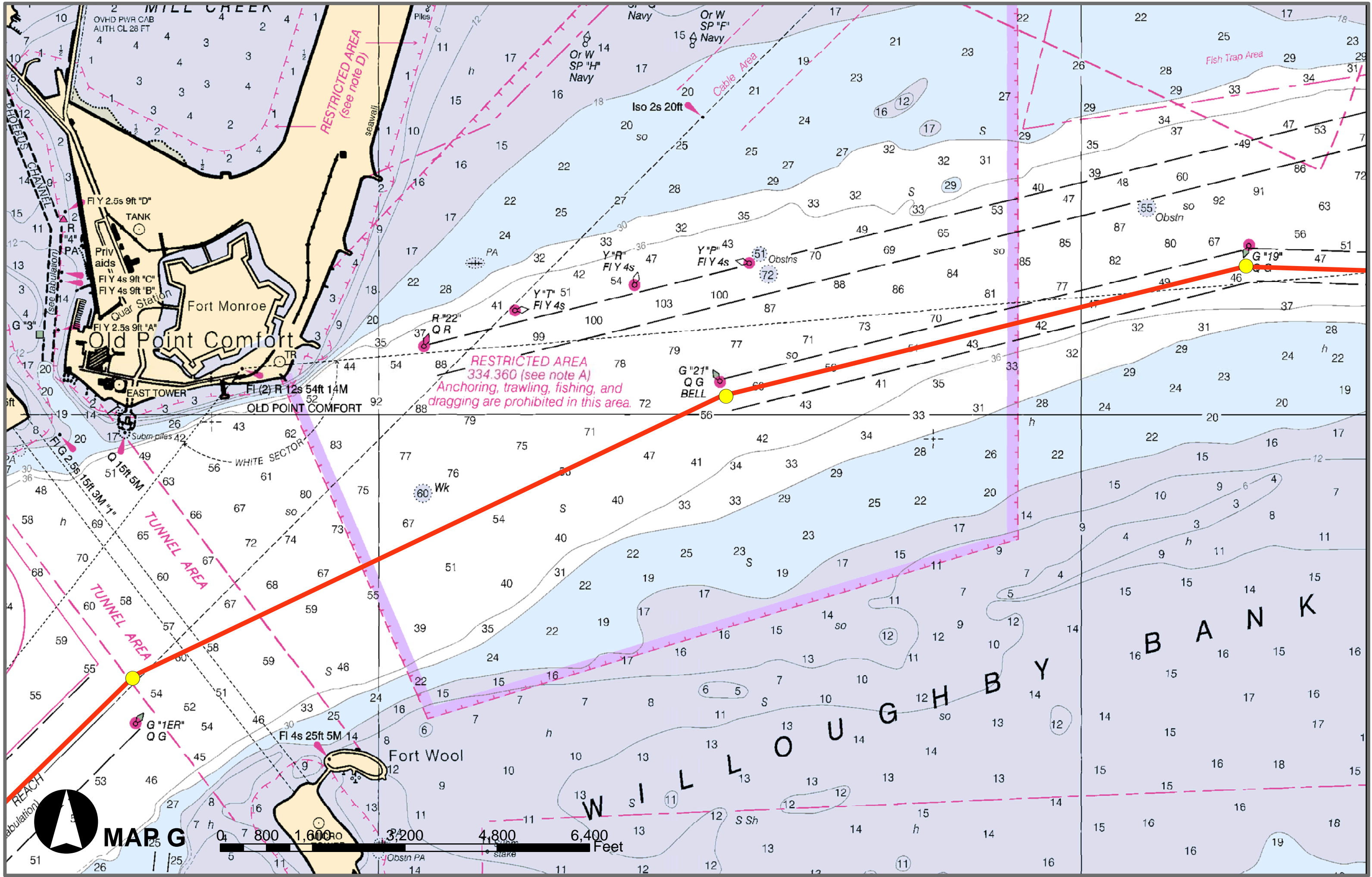
FAIRWAY FOR SHALLOW-DRAFT VESSELS AND TOWS

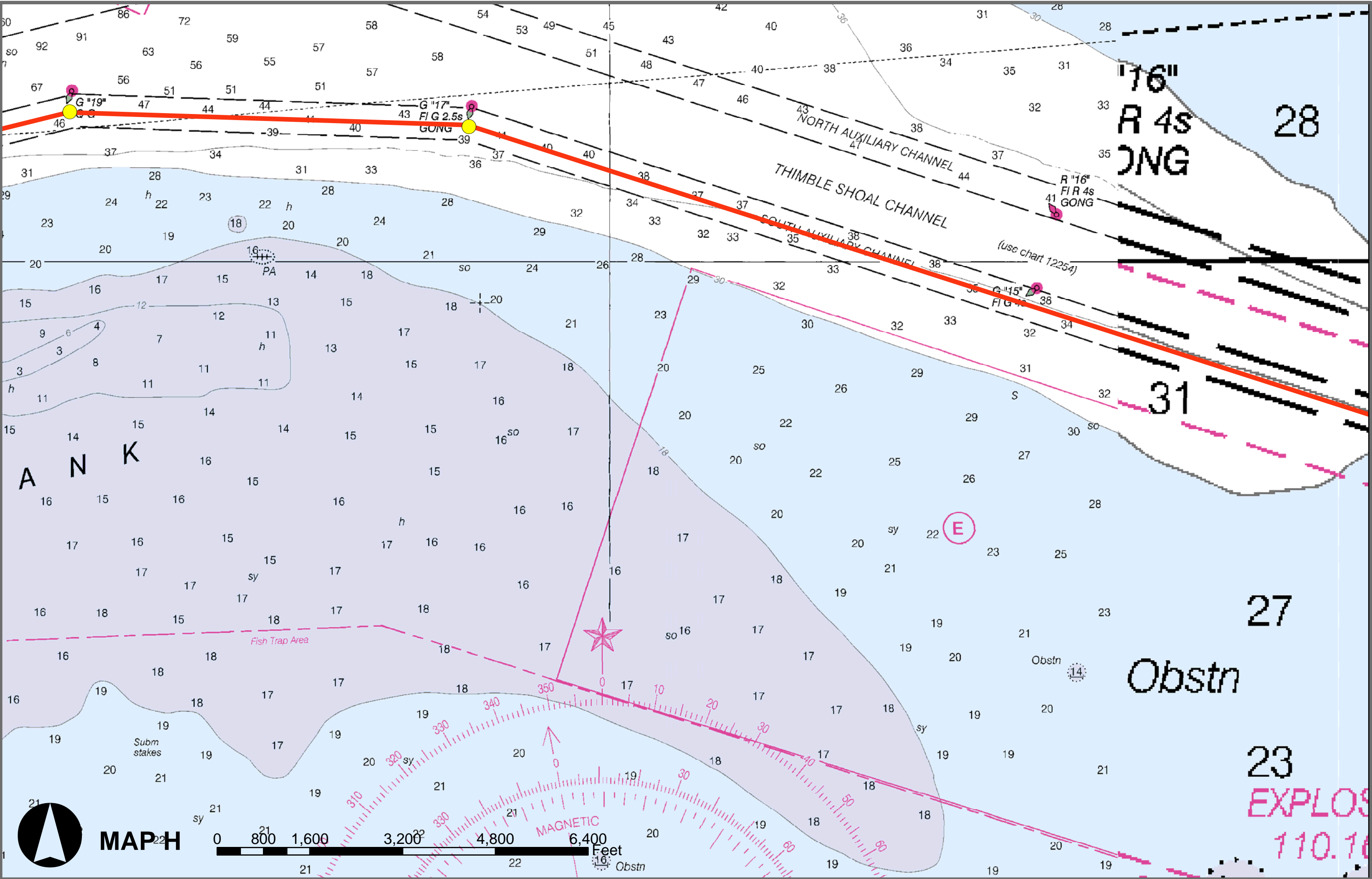




MAP F







'16"
R 4s
ONG

NORTH AUXILIARY CHANNEL
THIMBLE SHOAL CHANNEL
SOUTH AUXILIARY CHANNEL

A N K

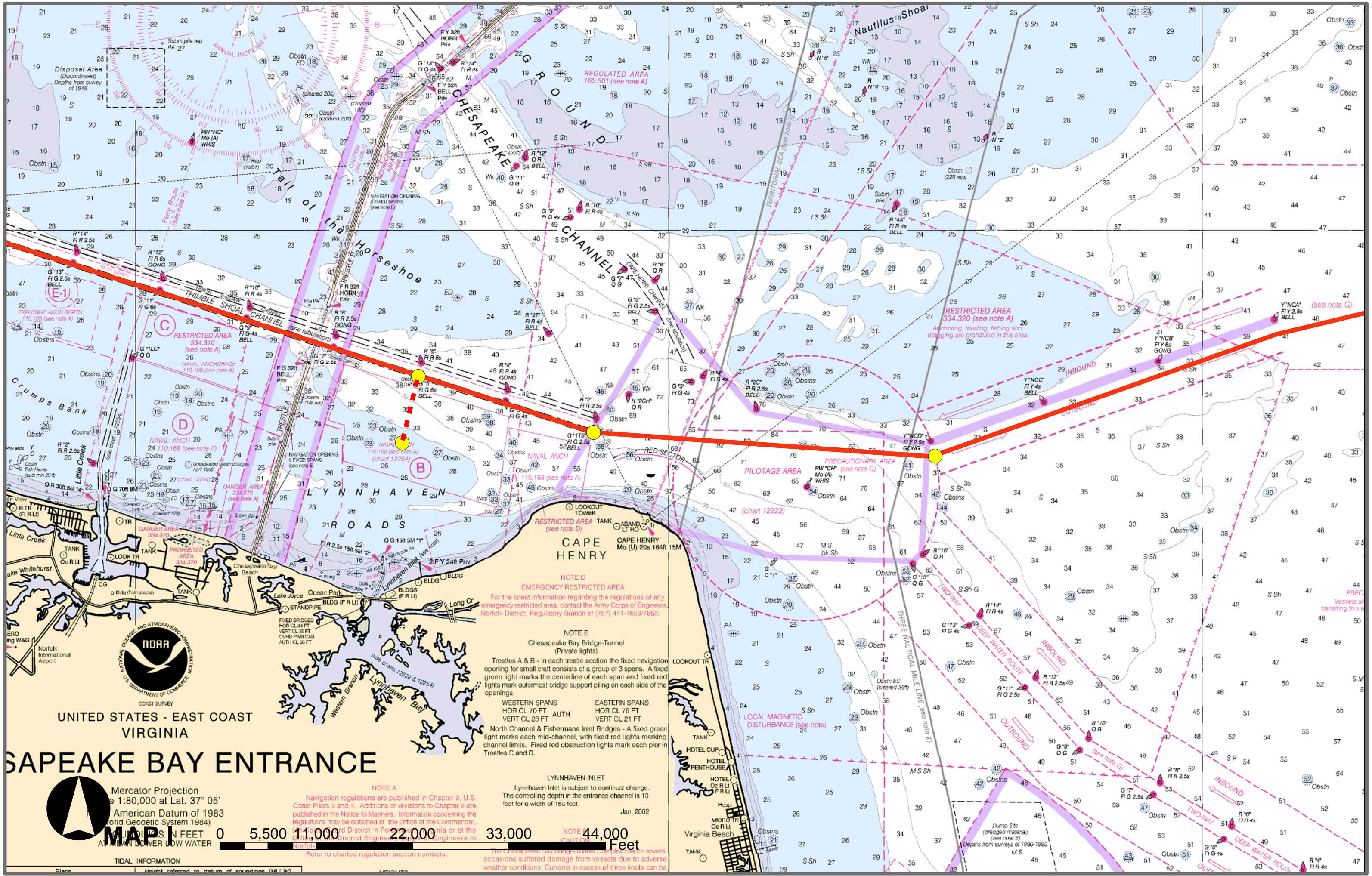
Obstn

EXPLOS
110.10

MAP-H

0 800 1,600 3,200 4,800 6,400 Feet

MAGNETIC



CHESAPEAKE BAY ENTRANCE

NOAA
NATIONAL OCEANIC AND ATMOSPHERIC ADMINISTRATION
U.S. DEPARTMENT OF COMMERCE
COAST SURVEY

UNITED STATES - EAST COAST
VIRGINIA

MERCATOR PROJECTION
Scale 1:80,000 at Lat. 37° 05'
American Datum of 1983
World Geodetic System 1984)

MAP
AT MEAN LOWER LOW WATER

TIDAL INFORMATION
Height referred to datum of soundings (MLLW)

NOTE A
Navigation regulations are published in Chapter 2, U.S. Coast Pilots 3 and 4. Additions or revisions to Chapter 2 are published in the Notice to Mariners. Information concerning the regulations may be obtained at the Office of the Commander, U.S. Coast Guard District in Portsmouth, Virginia or at the U.S. Coast Guard District Engineer's Office in Norfolk, Virginia.

NOTE B
Refer to charted regulation section numbers.

NOTE C
The Chesapeake Bay Bridge-Tunnel has on several occasions suffered damage from vessels due to adverse weather conditions. Currents in excess of three knots can be

NOTE D
EMERGENCY RESTRICTED AREA
For the latest information regarding the regulations of any emergency restricted area, contact the Army Corps of Engineers, Norfolk District, Regulatory Branch at (757) 441-7653/7652.

NOTE E
Chesapeake Bay Bridge-Tunnel
(Private lights)

Trestles A & B - In each trestle section the fixed navigation opening for small craft consists of a group of 3 spans. A fixed green light marks the centerline of each span and fixed red lights mark outermost bridge support piling on each side of the openings.

WESTERN SPANS HOR CL 70 FT AUTH VERT CL 23 FT	EASTERN SPANS HOR CL 70 FT VERT CL 21 FT
--	---

North Channel & Fishermans Inlet Bridges - A fixed green light marks each mid-channel, with fixed red lights marking channel limits. Fixed red obstruction lights mark each pier in Trestles C and D.

LYNNHAVEN INLET
Lynnhaven Inlet is subject to continual change. The controlling depth in the entrance channel is 10 feet for a width of 150 feet.

Jan. 2002

NOTE F
The controlling depth in the entrance channel is 10 feet for a width of 150 feet.

NOTE G
Refer to charted regulation section numbers.

NOTE H
Refer to charted regulation section numbers.

NOTE I
Refer to charted regulation section numbers.

NOTE J
Refer to charted regulation section numbers.

NOTE K
Refer to charted regulation section numbers.

NOTE L
Refer to charted regulation section numbers.

NOTE M
Refer to charted regulation section numbers.

NOTE N
Refer to charted regulation section numbers.

NOTE O
Refer to charted regulation section numbers.

NOTE P
Refer to charted regulation section numbers.

NOTE Q
Refer to charted regulation section numbers.

NOTE R
Refer to charted regulation section numbers.

NOTE S
Refer to charted regulation section numbers.

NOTE T
Refer to charted regulation section numbers.

NOTE U
Refer to charted regulation section numbers.

NOTE V
Refer to charted regulation section numbers.

NOTE W
Refer to charted regulation section numbers.

NOTE X
Refer to charted regulation section numbers.

NOTE Y
Refer to charted regulation section numbers.

NOTE Z
Refer to charted regulation section numbers.