

ASIAN LONGHORNED BEETLE

Quarterly Update



Volume 1, Summer Issue

September, 2004

New York Asian Longhorned Beetle Cooperative Eradication Program



Report an Asian longhorned beetle sighting:

877-STOP-ALB

Contents:

New Co-Director	2
Dennis Roberts	2
Chicago Volunteers	2
Recent Detections	4
Upcoming Events	4
Contacts	4
NY Quarantine Map	5
NJ Quarantine Map	6

Asian Longhorned Beetle found in Carteret, NJ

TRENTON – New Jersey Secretary of Agriculture Charles M. Kuperus confirmed the discovery of an Asian longhorned beetle in Carteret Borough, Middlesex County.

A Carteret resident discovered the beetle – which is native to China and capable of causing widespread damage to maple and other hardwood trees – on a tree in his back yard on August 2 and notified authorities. The species of beetle was confirmed on Wednesday, August 4, and further investigation revealed approximately 400 infested trees in the area.

Asian longhorned beetles have caused serious tree losses in New York State and Chicago, but have been found attacking trees only once before in New Jersey. In October 2002, an area within 1½ miles of a 9-acre site in Jersey City was quarantined to prevent



Infested tree in Carteret, New Jersey

the spread of the insect. More than 100 infested trees at that site were removed to eliminate the beetle.

“We have already begun the process of containing this potentially damaging insect as we did in Jersey City in 2002. The Department is taking

protective measures to ensure that it does not spread to other areas,” said Secretary Kuperus. “These precautions are necessary because this beetle could cause devastating damage to Northeast forests if allowed to spread.”

See Carteret page 3

USDA Continues to Restrict Movement of Firewood

NEW YORK —

Fall is a great time to go camping. But, before heading to the great outdoors, the U.S. Department of Agriculture would like to remind people of the dangers of moving firewood from regulated areas in New York. Moving firewood out of a quarantine area can have a devastating impact on our nation’s trees as it could lead to an infestation by the Asian longhorned beetle (ALB).

“Even though the Asian longhorned beetle doesn’t fly

great distances, it can get around by hitching a ride in infested wood,” said Christine Markham, national ALB program director with USDA’s Animal and Plant Health Inspection Service.

ALB, native to China, Japan and Korea, is a voracious pest of our nation’s deciduous hardwood forests and urban landscape. It deposits its eggs into healthy hardwood trees. After hatching, the developing ALB bores into healthy hardwood trees and feeds on living tree tissue during the

larval stage. Later, throughout the summer, adult beetles emerge from exit holes and briefly feed on the small twigs and leaves of host trees.

ALB attacks many different hardwood trees including: all species of maple, birch, horsechestnut, poplar, willow, elm, ash, mimosa (silk tree), hackberry, London plane, sycamore and mountain ash.

See Firewood page 3



Asian Longhorned Beetle
Anoplophora glabripennis
(Actual Size)



Claudia Ferguson Named Co-Director for New York

NEW YORK – Claudia Ferguson has been selected as the New York Co-Director for the Asian Longhorned Beetle Eradication Program. Claudia enjoys cultural diversity, and loves the opportunity to work in New York City with a cooperative program.

Claudia Ferguson joined USDA-APHIS in 1996 as a PPQ Officer in Miami, Florida after working for several years for the Florida Agriculture Department, Division of Plant Industry. In 1999, she became the PPQ Florida Industry Liaison. This was a position of leadership in highly specialized duties for implementation and coordination of an active Program of Smuggling Interdiction. She gained the cooperation from State and Federal regulatory agencies, and developed effective collaborative relationships with the Florida Agriculture Industry and stakeholders.

In 2002, Claudia was promoted as PPQ Supervisor at the Port of Miami where she worked until late 2002 when she was selected for Port Director for the Agriculture Quarantine Program at Newark Airport, New Jersey. She worked for a year and a half under the Department of Homeland Security due to the mass transfer of PPQ personnel to DHS. As Port Director at Newark she had the responsibility to ensure operational continuity of the Agriculture Program's traditional mission while leading change within the new agency.

Claudia graduated with a B.S. degree in Agronomy in Argentina, and M.S. in Agriculture Sciences from University of Costa Rica, and recently graduated from the APHIS Leadership Development Program. She has brought back to APHIS-PPQ



Claudia Ferguson, New York Co-Director for the ALB Eradication Program

her knowledge and experience to contribute to the cooperative efforts to eradicate the Asian Longhorned Beetle.

Dennis Roberts Retires

AMITYVILLE, 2004 – One of the original soldiers against ALB is no longer here. After over 30 years as a horticulture inspector with the NYS Department of Agriculture and Markets, Dennis Roberts retired to Florida in July. The following is Dennis's farewell message published by his request.

Message from Dennis:

Well what can I say? My time working with the Asian longhorned beetle has come to an end and I probably will miss the program in many ways. One thing I do know is that I will miss the hard working crew of many people who have dedicated

themselves to fighting this destructive pest. I grew up in the Adirondack and Catskill mountains and I can't tell you what they mean to me. That is why this program has been so near to my heart.

I want to thank all of those associated with the program for all the work you have done to protect the trees around us. I leave with confident feelings that you will carry on the fight to rid this great land of ours of this menace.

Thanks to all,

Dennis M. Roberts
Horticulture Inspector II
NYS/DAM

Volunteers look for ALB in Chicago

CHICAGO, 2004 – The United States Department of Agriculture has teamed with Kadix Systems to implement a volunteer survey program to identify any remaining populations of the Asian longhorned beetle (ALB) in Chicago. A group of volunteers called the "Beetle Brigade" survey trees for signs of the ALB. The program is currently being piloted in Chicago's 43rd and 44th Wards.

These proactive citizens help stop the beetle from attacking more trees by locating isolated populations before they can do any additional damage.

Training is provided and consists of beetle identification, signs of

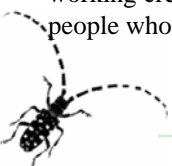
infestation, and tree identification.

If you would like to help protect your community from invasive pests in Chicago, join the "Beetle Brigade" today! Please contact Bob Benjamin, ALB Volunteer Coordinator at 312-617-8980 or email:

ALBVolunteer@kadix.com

If you have limited free time, you can still help by inspecting the trees in your yard. If you find signs of the ALB, please report them to the ALB Volunteer Coordinator immediately or the USDA at:

(312) 74-BEETL



Carteret (cont. from page 1)

Restrictions on the movement of firewood, tree trimmings and nursery products will be instituted in a one-mile radius around the property where the beetle was found, said Carl Schulze, Director of the NDA's Division of Plant Industry.

"We want to make sure that any wood that may be infested with the beetle does not get moved out of the area," Schulze said. "Tree climbers will be in the area in the coming days to inspect trees to determine how large this infestation is."

"The Department is working with the USDA to inspect trees within at least a one-mile radius, looking for signs of the beetle, and that radius might increase as the investigation continues," said Secretary Kuperus.

"The battle to eradicate the longhorned beetle requires a cooperative approach. Municipal, county, state and federal governments, along with the public, all need to work side by side to eradicate this pest. We are committed to marshalling the same effort in Carteret as we did in Jersey City, and we will reach out to residents to make sure they know what our actions are going to be."

The Department is working with the USDA, the New Jersey Department of Environmental Protection and officials from Carteret and Middlesex County on the containment of the beetle.

Anyone suspecting the presence of this beetle should contact the NJDA at:

1-866-BEETLE-1 or (609) 292-5440.



NJDA tree climber Kevin Freeman inspects a tree in Carteret.

For more information, visit the APHIS Web site at www.aphis.usda.gov and click on Asian longhorned beetle under "Hot Issues" or visit the Rutgers Cooperative Extension web site at: www.rce.rutgers.edu/presentations and click on Asian Long-Horned Beetle under "Plant Agriculture."

Firewood (cont. from page 1)

Residents are asked not to move USDA regulated articles out of the quarantine areas as movement of these articles can unintentionally increase the spread of an infestation. Articles include firewood (all hardwood species), green lumber and other wood materials living, dead, cut or fallen, including nursery stock, logs, stumps, roots, branches and debris of half an inch or more in diameter of many common urban and forest trees. Transporting wood from established quarantined areas can be both a federal and state offense. Violations can be punished with federal fines of up to \$250,000.

In New York City, regulated areas for ALB include: all areas south of 125th Street in Manhattan to include Roosevelt, Wards and Randalls Islands; in Queens south of Little Neck Bay, north of the Jackie Robinson Parkway/Grand Central Parkway, west from the Queens/Nassau line to the East River; and in Brooklyn, south of the Queens line, north of Linden Blvd. (Route 27)/Liberty Ave., west of 112th

Street to the East River.

On Long Island, the Amityville quarantine includes the area south of the Southern State Parkway, east of Broadway, in Massapequa, west of Wellwood Ave., in Lindenhurst, south of East John St., west of Route 109, in Babylon, and north of the Great South Bay. The Islip quarantine includes the area east of Brentwood Rd., in Bayshore, north of Montauk Highway, west of Heckscher Parkway, west of Carleton Ave., in Central Islip, south of Pear St., east of Broadway, in Brentwood, and south of the Southern State Parkway.

To fight this destructive pest and prevent it from spreading, agriculture officials have removed and destroyed more than 7,100 trees in New York. The goal is to eradicate this highly destructive insect from New York.

Residents are reminded to find out if they live in an area regulated for ALB before moving firewood by calling:

1-877-STOP-ALB or 1-866-265-0301

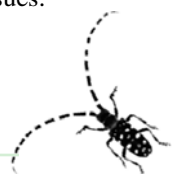
The public can also help by looking for the



Movement of firewood

Asian longhorned beetle, which is about 1 to 1.5 inches long, has a shiny jet black body with distinctive white spots and long antennae that are banded with black and white. To report a sighting of this destructive pest, please call the phone numbers listed above.

For more information, visit the APHIS Web site at www.aphis.usda.gov, click on Asian longhorned beetle under "Hot Issues." Information is also available at: www.uvm.edu/albeetle



Contacts

NY Beetle Sighting
(877) STOP-ALB

NJ ALB Information
(866) BEETLE1

Long Island Office
(631) 598-5943

Brooklyn Office
(718) 852-4685

Queens Office
(718) 747-6758

Manhattan Office
(212) 337-2645

Tree Replanting
NYS-DEC
Lands & Forests
(718) 482-6440

Questions or comments
on this publication
should be directed to:

Michael Bohne
320 Merrick Road
Amityville, NY 11701

Phone: (631) 598-5943
Fax: (631) 598-5963
E-mail: mbohne@fs.fed.us

New York ALB outreach events

Compliance Training Schedule

Sept. 21st 9 am–12:30 pm
Babylon Town Hall Annex

October 19th 6-9:30 pm
Hicks Nursery, Westbury

November 18th 10 am-2 pm
Olmstead Center, Queens

For more information call:
(631) 288-1751

September

4 Carteret Fair, Carteret, NJ
15 Presentation at Riverside Park in
Manhattan 7:00 pm

October

2-3 Brooklyn Botanic Garden
Chili Pepper Fiesta
8-11 Bethpage Fair, Bethpage NY
14-17 Bethpage Fair, Bethpage NY
31 Brooklyn Botanic Garden
Ghouls & Gourds Festival

Contact (631) 598-5943
to set up an ALB event.

Latest New York Infestations

Brooklyn: 40 infested tree were found in Bedford-Stuyvesant & Prospect Heights between 7/22/04 & 9/2/04

Long Island: An infested tree was found in Massapequa on 12/08/03

Manhattan: Two infested tree were found in the Upper East Side on 8/29/04

Queens: Four infested trees were found in Long Island City between 8/25/04 & 9/2/04

Information available on the web at:

Forest Service: www.na.fs.fed.us/spfo/alb/index.htm

Animal and Plant Health Inspection Service: www.aphis.usda.gov

University of Vermont Entomology Research Laboratory: www.uvm.edu/albeetle

New York City Parks & Recreation: www.nycgovparks.org

About the program...

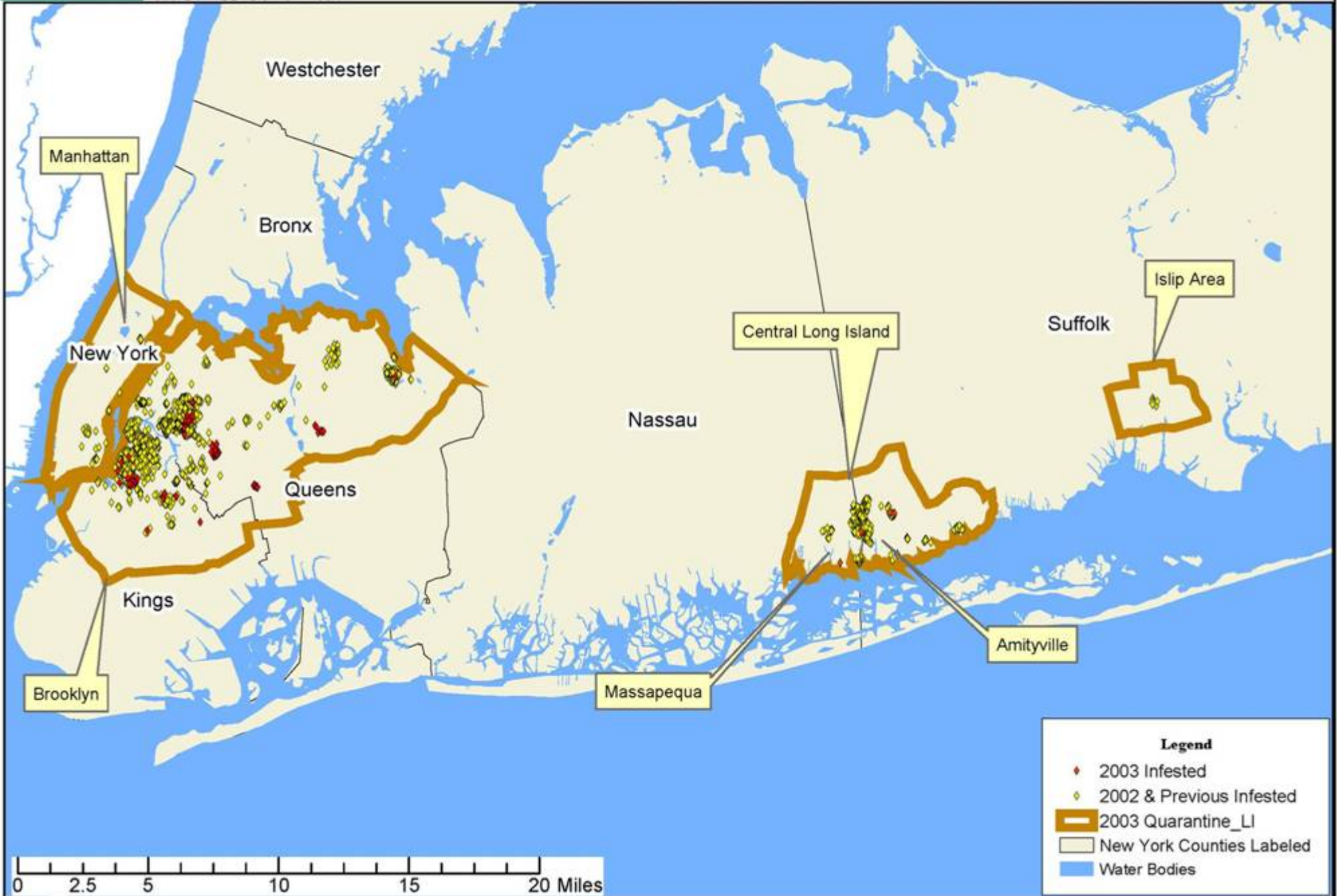
The New York Asian Longhorned Beetle Cooperative Eradication Program includes participation from USDA Animal and Plant Health Inspection Service, USDA Forest Service, New York State Department of Agriculture & Markets, New York State Department of Environmental Conservation and New York City Department of Parks & Recreation.





ANIMAL AND PLANT
HEALTH INSPECTION SERVICE
PLANT PROTECTION AND QUARANTINE
ASIAN LONGHORNED BEETLE
COOPERATIVE ERADICATION PROGRAM

NEW YORK STATE - ASIAN LONGHORNED BEETLE PROGRAM 2003 QUARANTINE BOUNDARIES





Asian Longhorned Beetle
 Carteret, New Jersey - Regulated Area
 New Jersey Department of Agriculture
 USDA APHIS PPQ
 August 18, 2004



 Quarantine Zone

