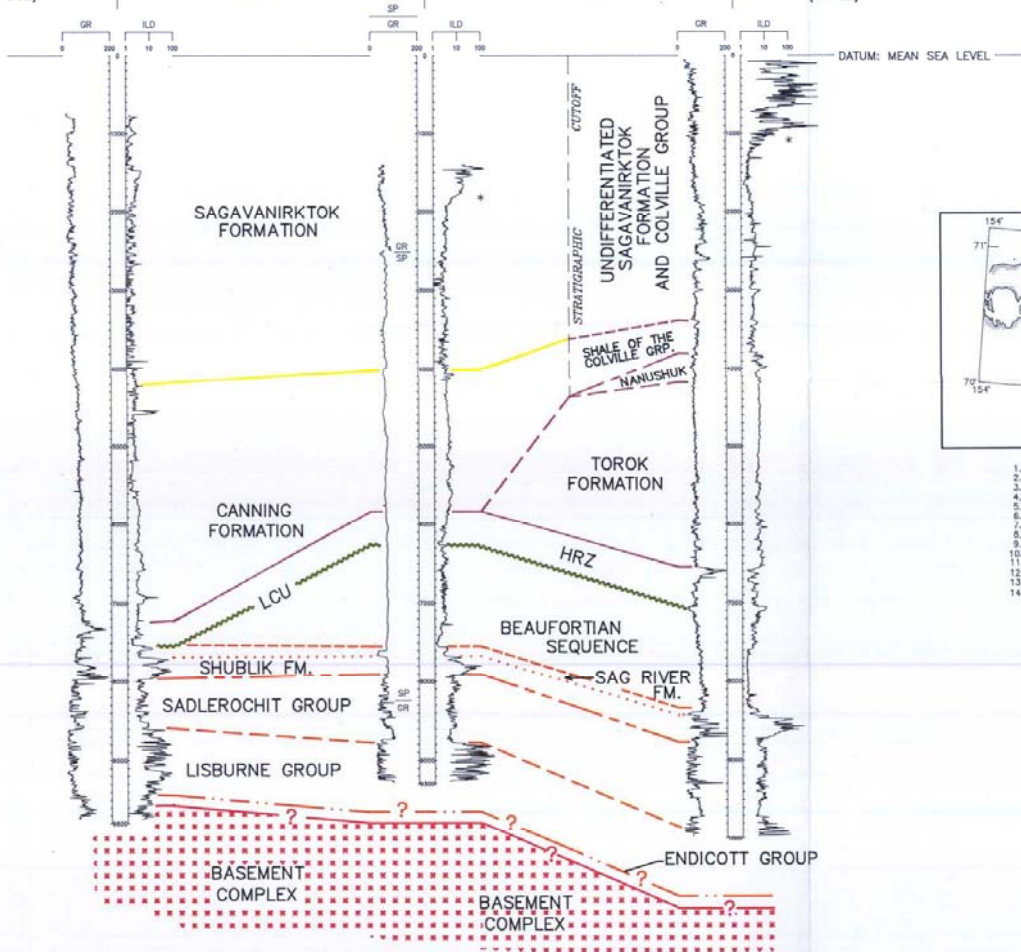


TENNECO
OCS Y-0338 #1
BLOCK 284
STRAIGHT
112' KB
(5 PHOENIX)

GULF
COLVILLE DELTA STATE #1
SEC 9 T13N R6E
STRAIGHT
22' KB
(25)

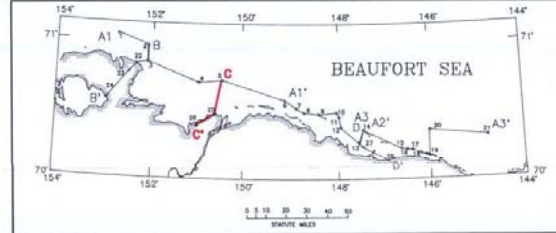
SOHIO
NECHELIK #1
SEC 18 T12N R5E
STRAIGHT
44' KB
(26)

C (NORTH) 15.8 MILES 11.4 MILES C' (SOUTH)



EXPLANATION

- DEPTH IN FEET
- * BASE OF PERMAFROST
- GR GAMMA RAY (IN API UNITS)
- ILD INDUCTION - DEEP (IN OHM-METERS)
- SP SPONTANEOUS POTENTIAL
- SP POINT WHERE LOG CHANGES
- GR POINT WHERE LOG CHANGES
- 112' KB HEIGHT OF KELLY BUSHING ABOVE DATUM (IN FEET)
- (5 PHOENIX) REFERENCE NUMBER FROM WELL LIST, INCLUDES PROSPECT NAME FOR OCS WELLS
- LCU LOWER CRETACEOUS UNCONFORMITY
- METAMORPHOSED SEDIMENTARY ROCKS



- | | |
|----------------------------------|--------------------------------|
| 1. OCS Y-0280 #1 (ANTARES) | 15. CHALLENGE ISLAND #1 |
| 2. OCS Y-0804 #1 (ORION) | 16. ALASKA ISLAND #1 |
| 3. OCS Y-0302 #1 (MARS) | 17. ALASKA STATE T-1 |
| 4. OCS Y-0334 #1 (MULLIK) | 18. ALASKA STATE D-1 |
| 5. OCS Y-0338 #1 (PHOENIX) | 19. ALASKA STATE A-1 |
| 6. OCS Y-0370 #1 (SANDPIPER) | 20. OCS Y-0848 #1 (HAMMERHEAD) |
| 7. NORKINGIAR #1 | 21. OCS Y-0871 #1 (CORONA) |
| 8. SEAL ISLAND 01-47 #1 | 22. W.T. FORAN #1 |
| 9. BEISER ISLAND | 23. CAPE HALKETT #1 |
| 10. BEAUFORT SEA BLOCK 54 #1 | 24. EAST TESHEKLIK #1 |
| 11. NO NAME ISLAND #1 | 25. COLVILLE DELTA STATE #1 |
| 12. OCS Y-0191 #1 (BEECHY POINT) | 26. NECHELIK #1 |
| 13. OCS Y-0196 #2 (TEEN ISLAND) | 27. WEST MIKKELSEN UNIT #A |
| 14. JEANETTE ISLAND #1 | 28. EAST MIKKELSEN UNIT #1 |

CORRELATION STUDY OF
SELECTED EXPLORATION WELLS
FROM THE NORTH SLOPE AND
BEAUFORT SEA, ALASKA

CROSS SECTION C-C'