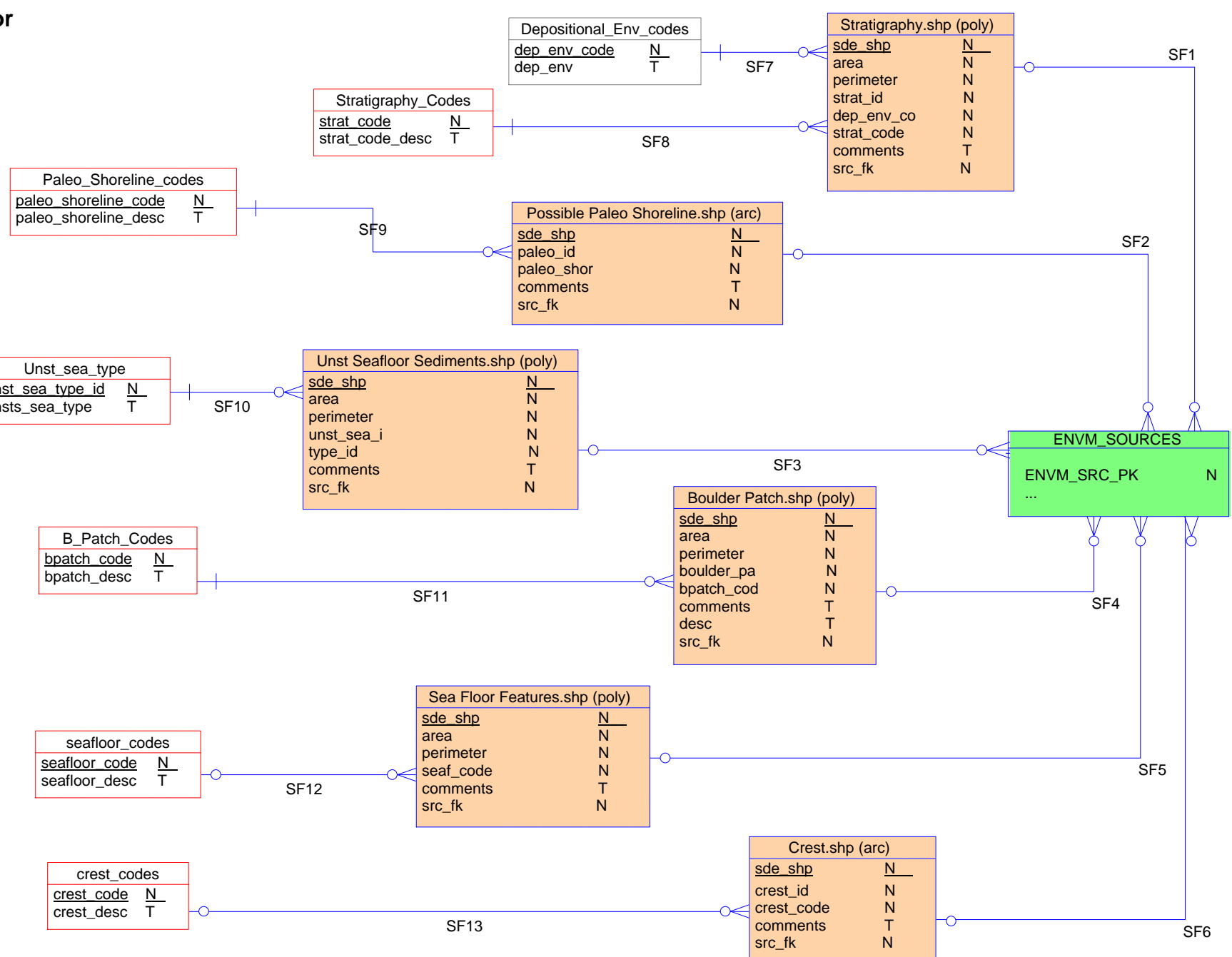
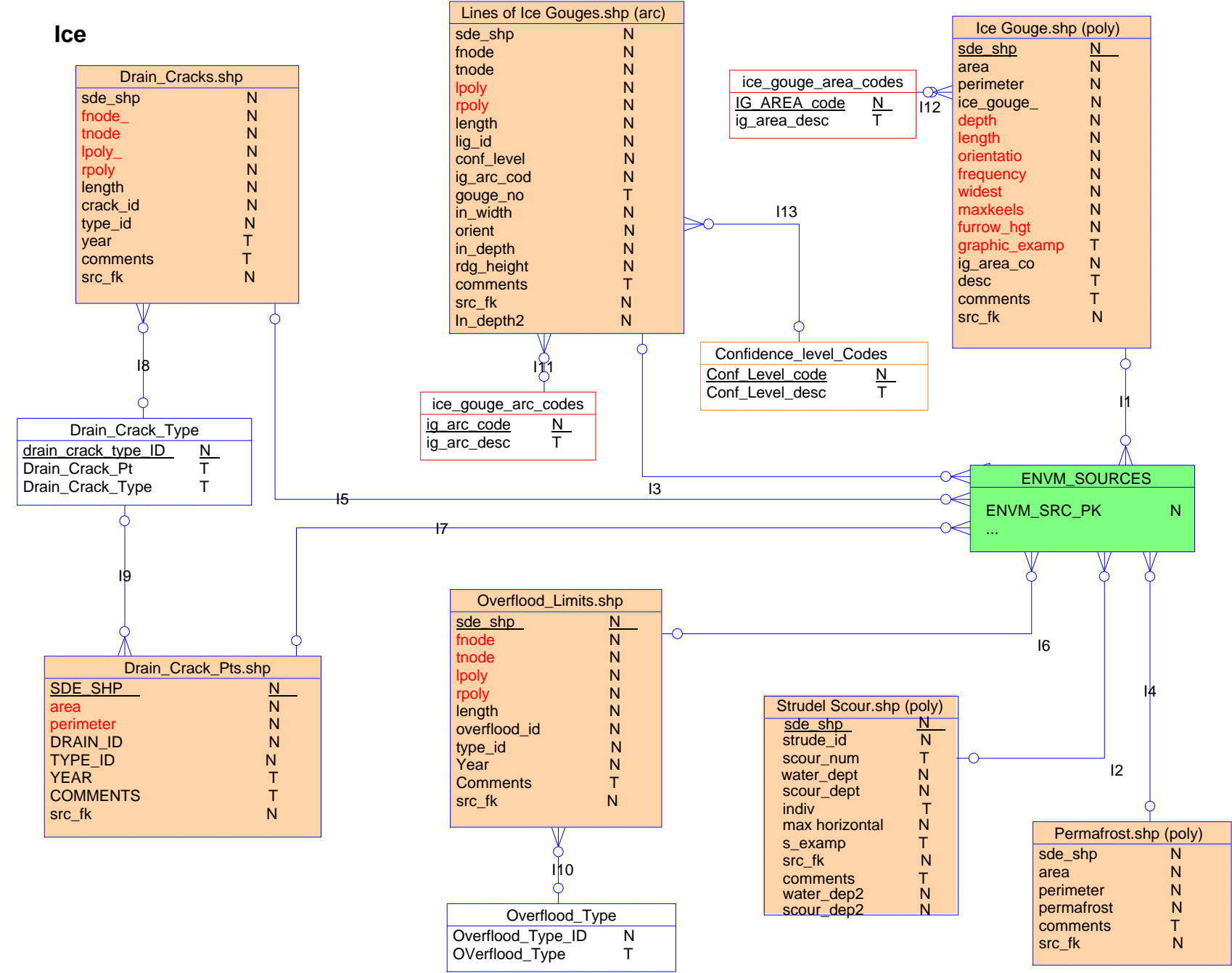


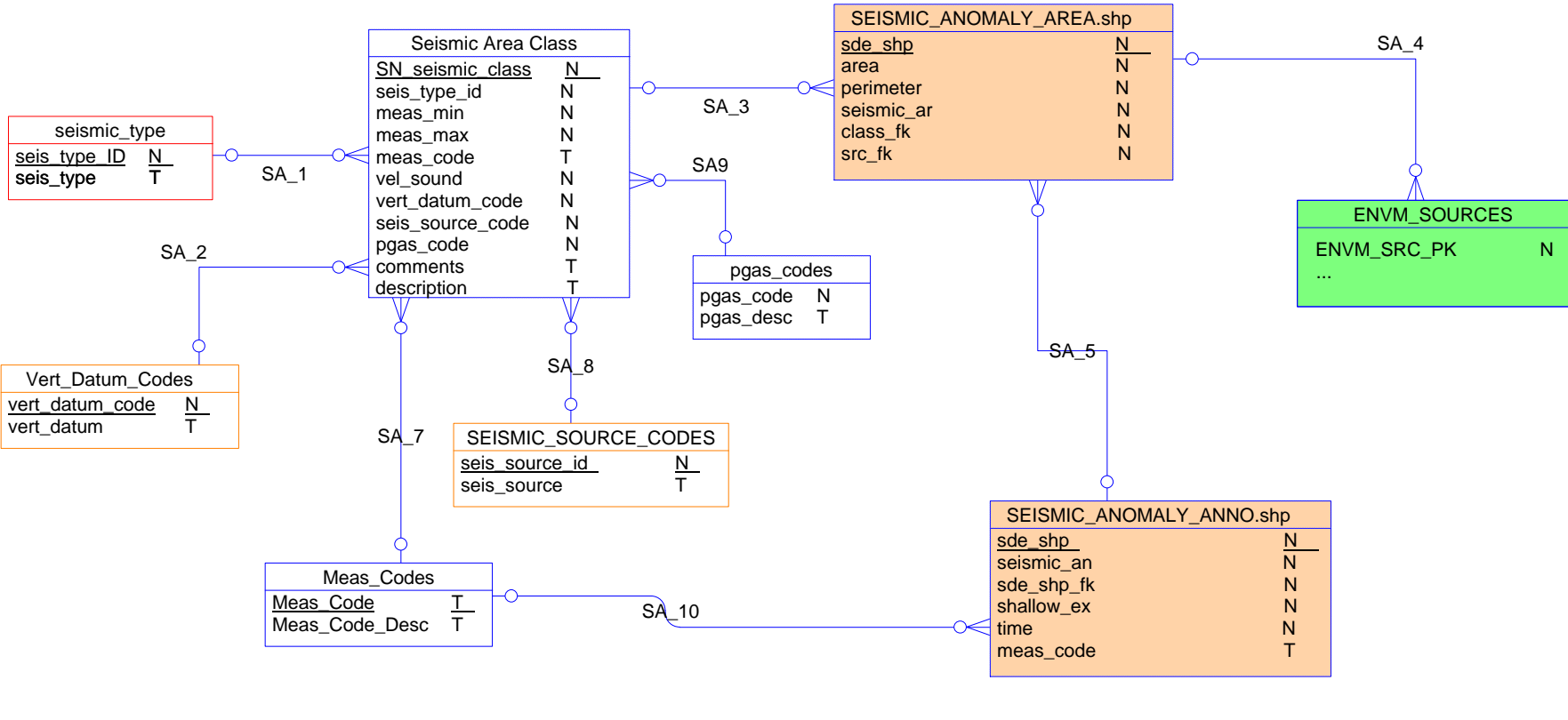
Sea Floor



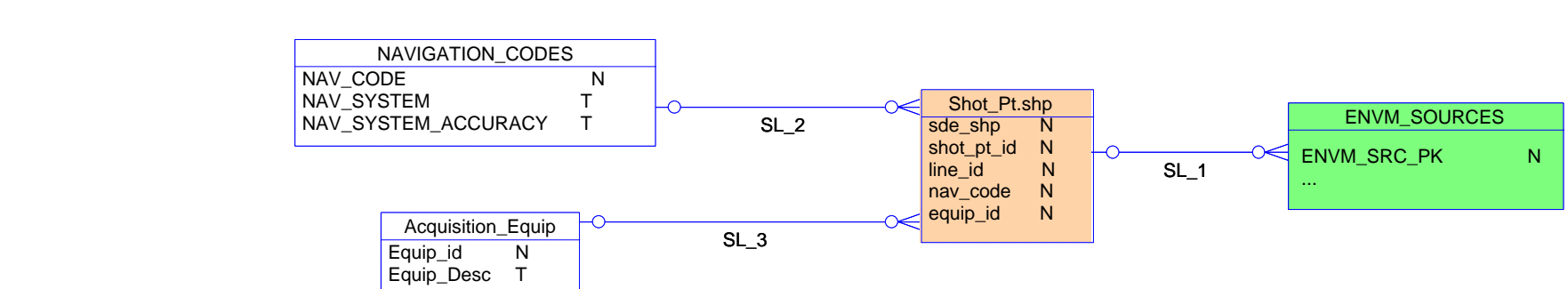
Ice



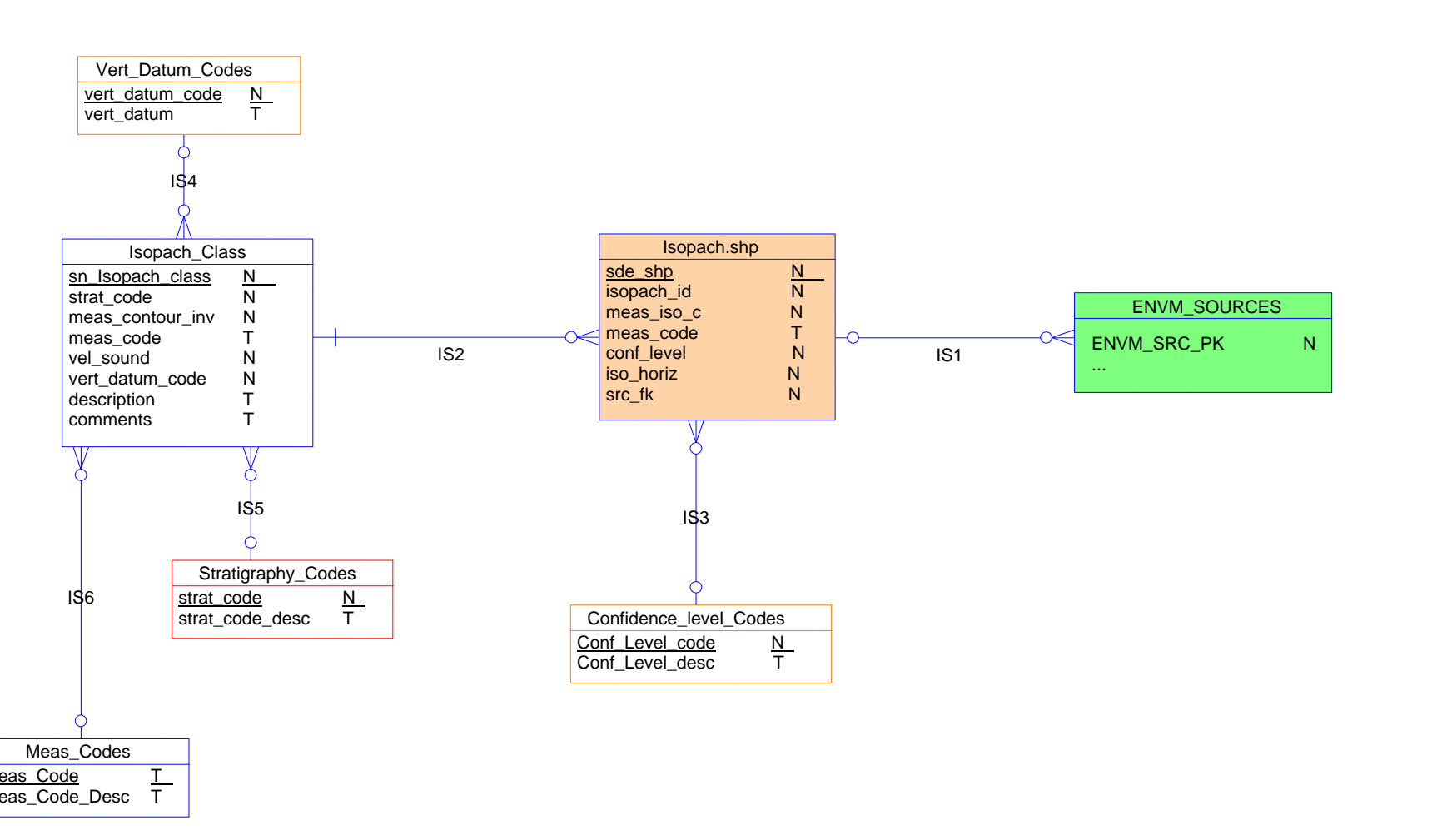
Seismic Anomalies



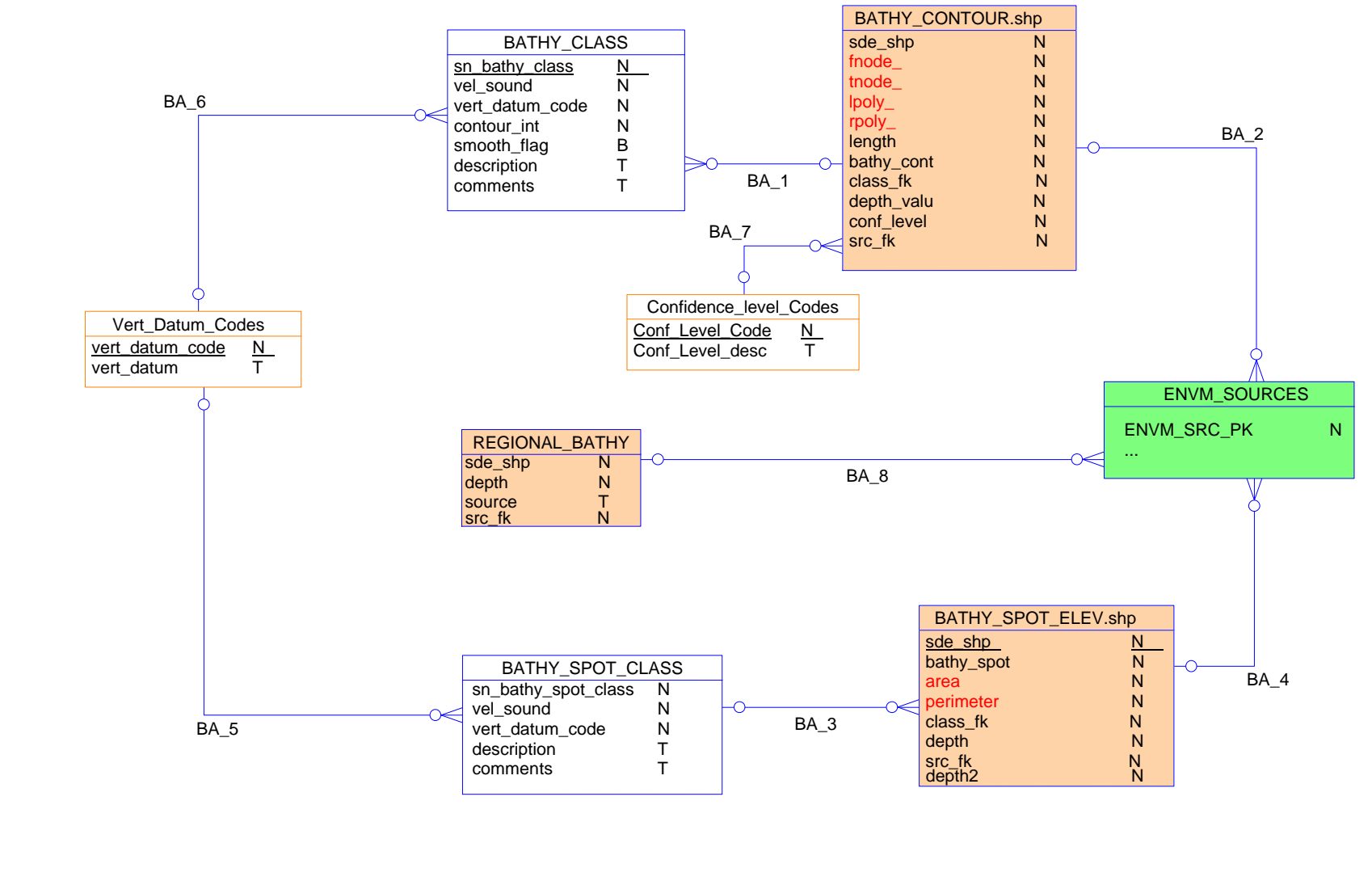
Survey Lines



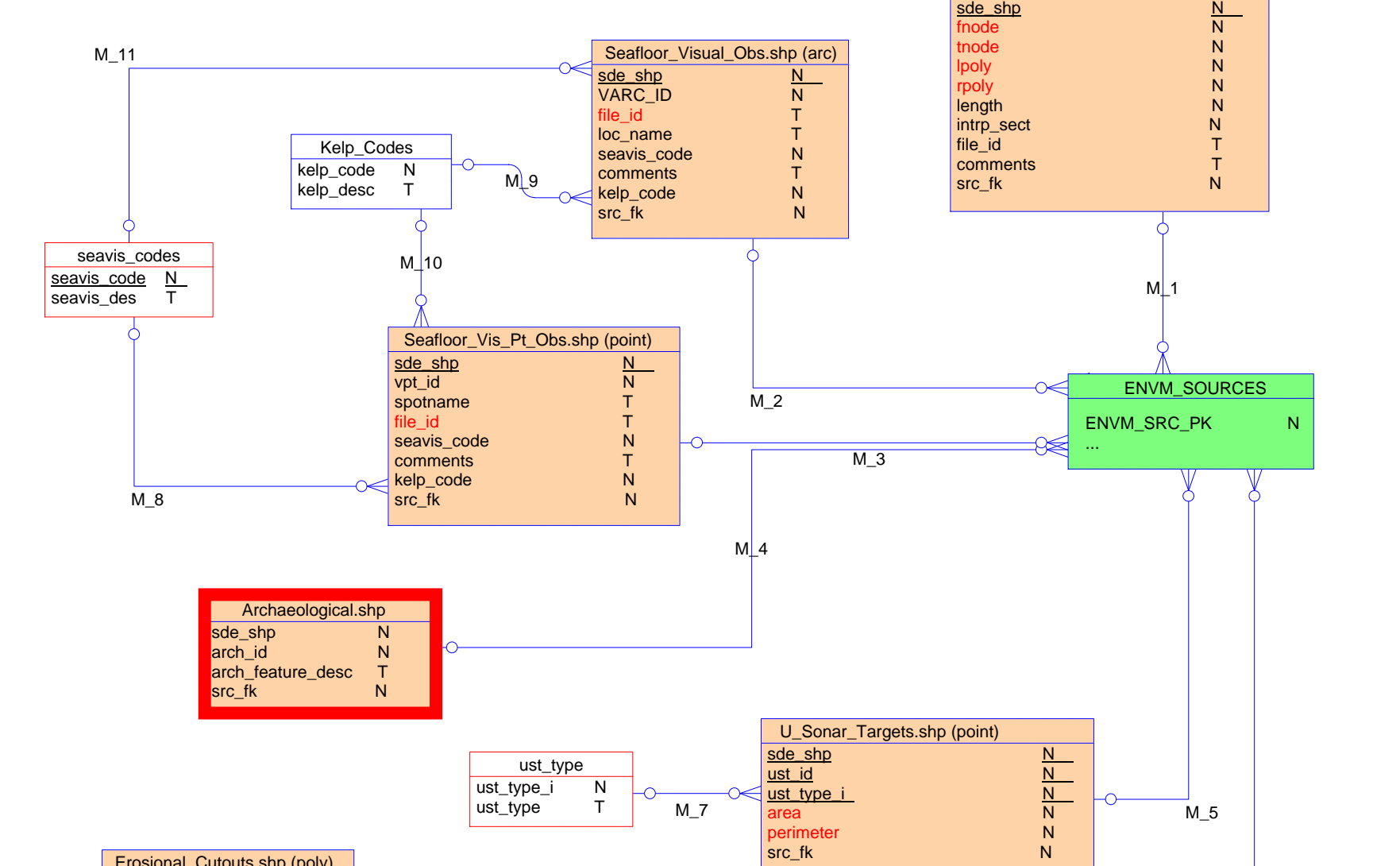
Isopach



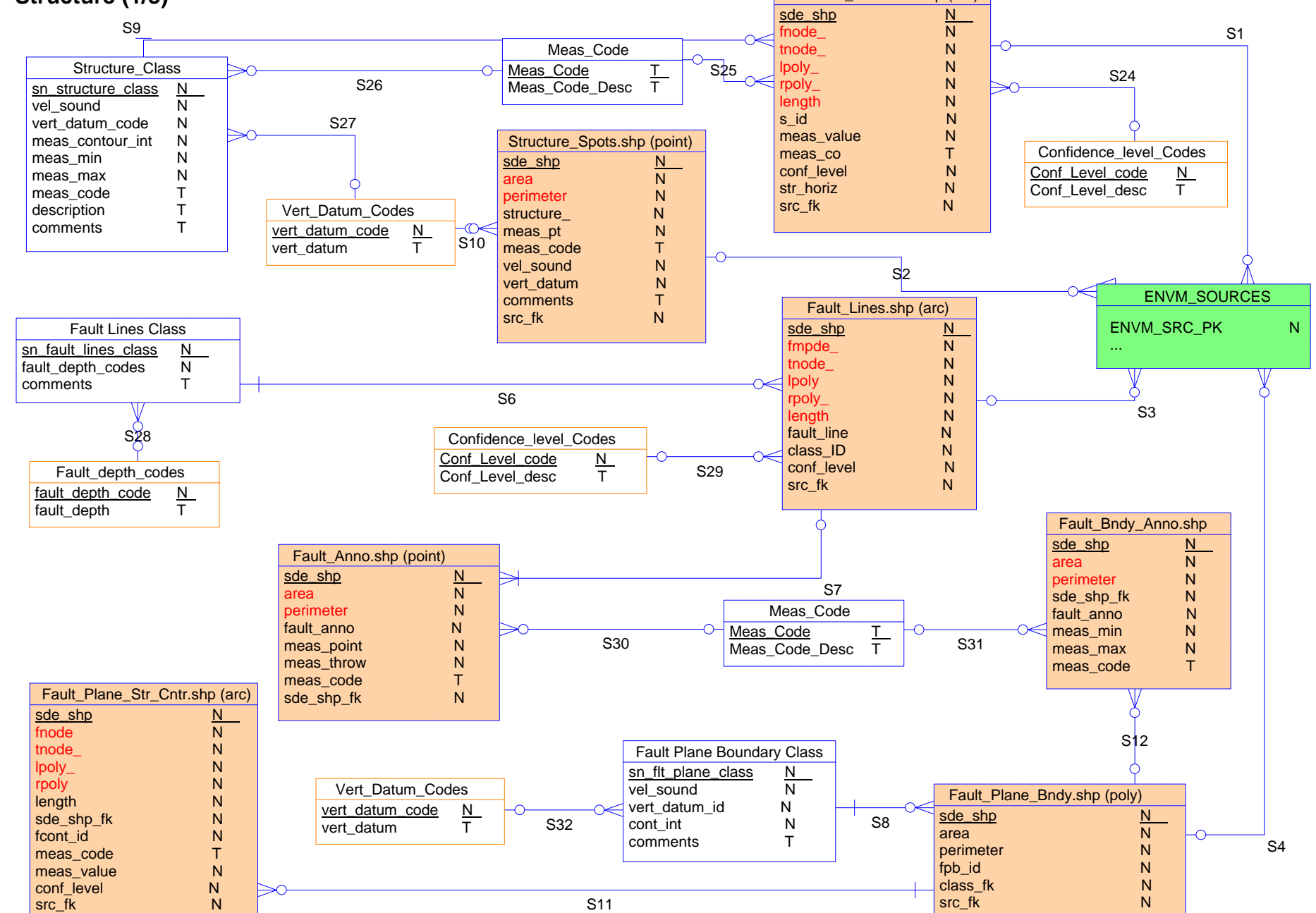
Bathymetry



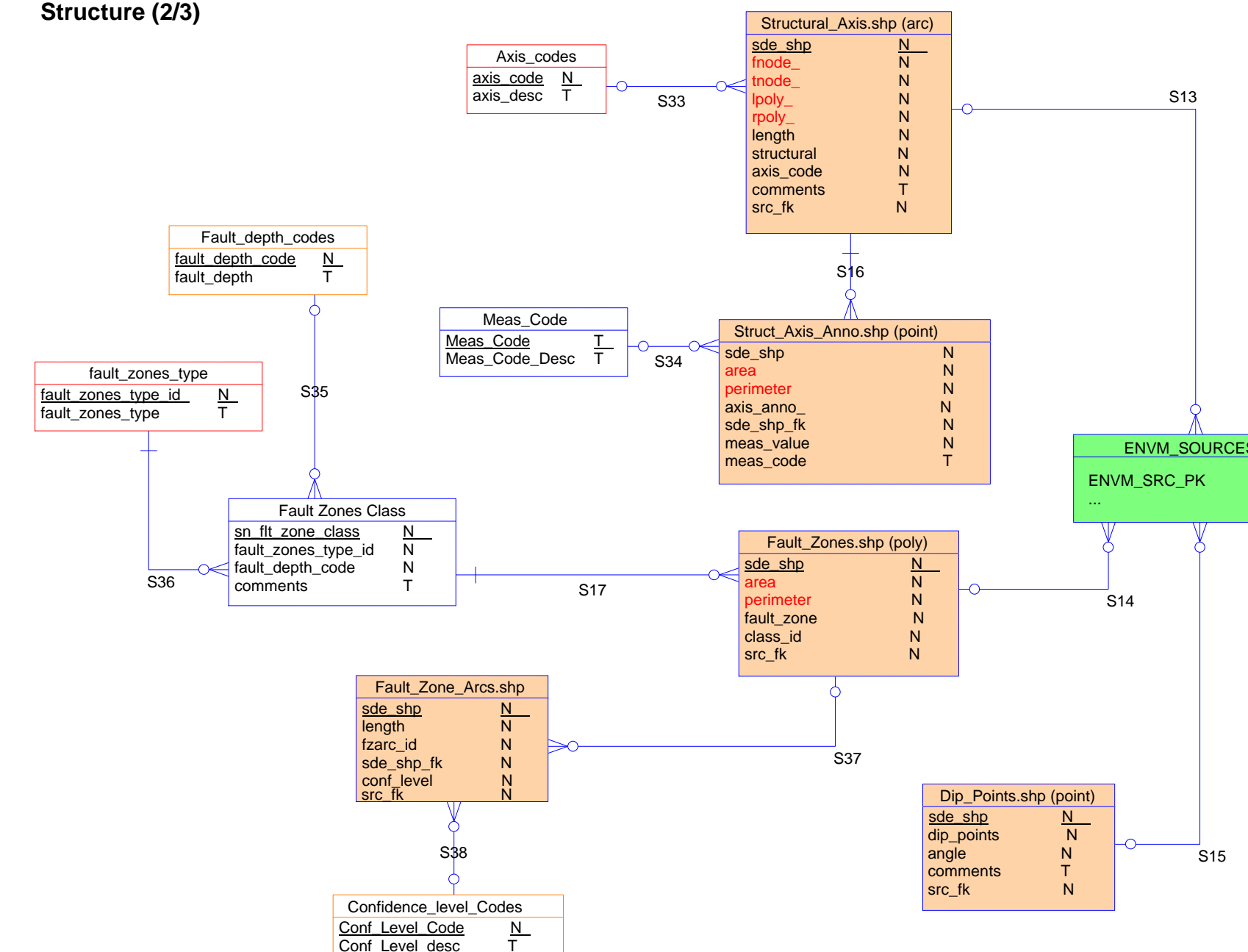
Miscellaneous



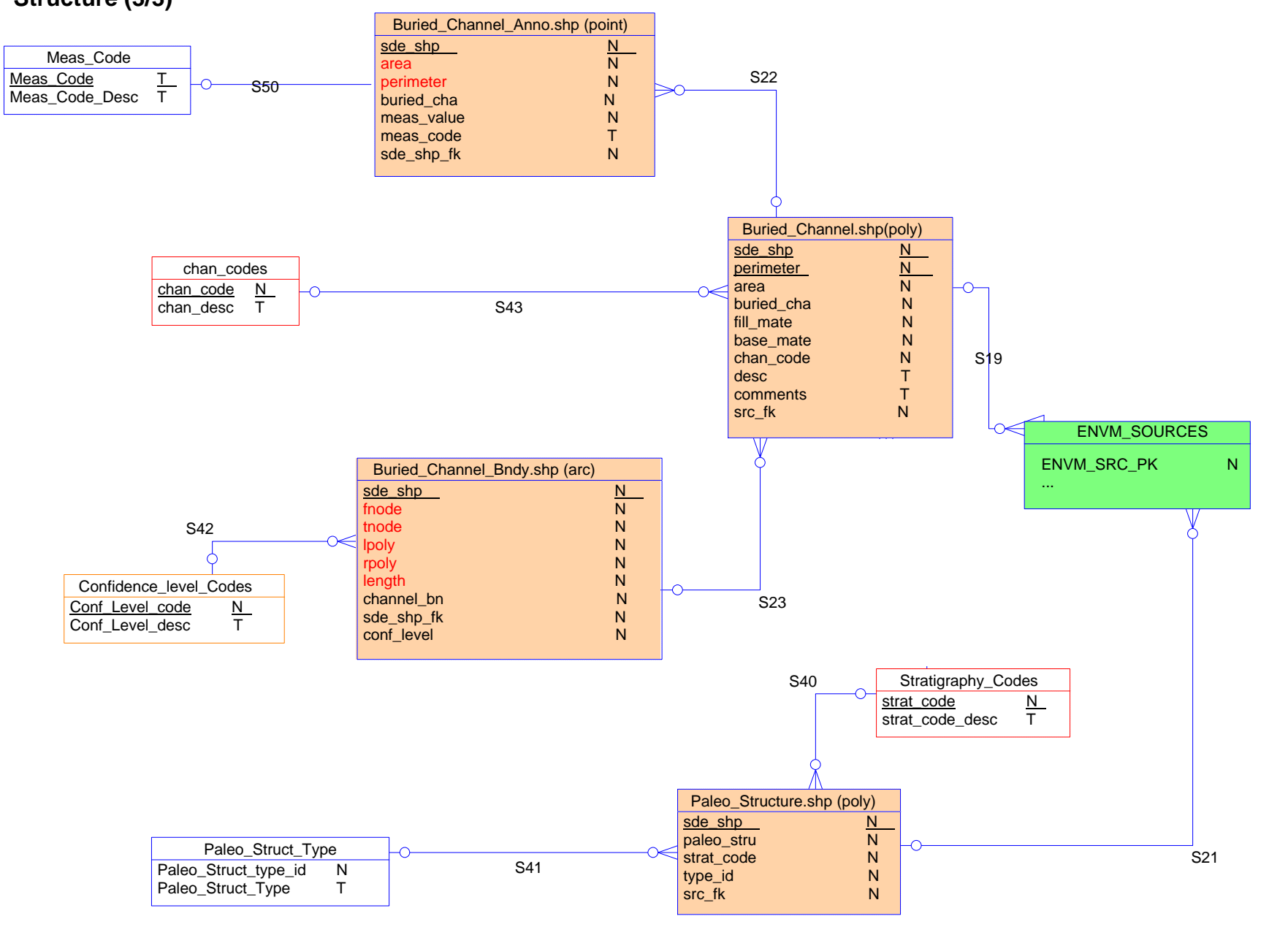
Structure (1/3)



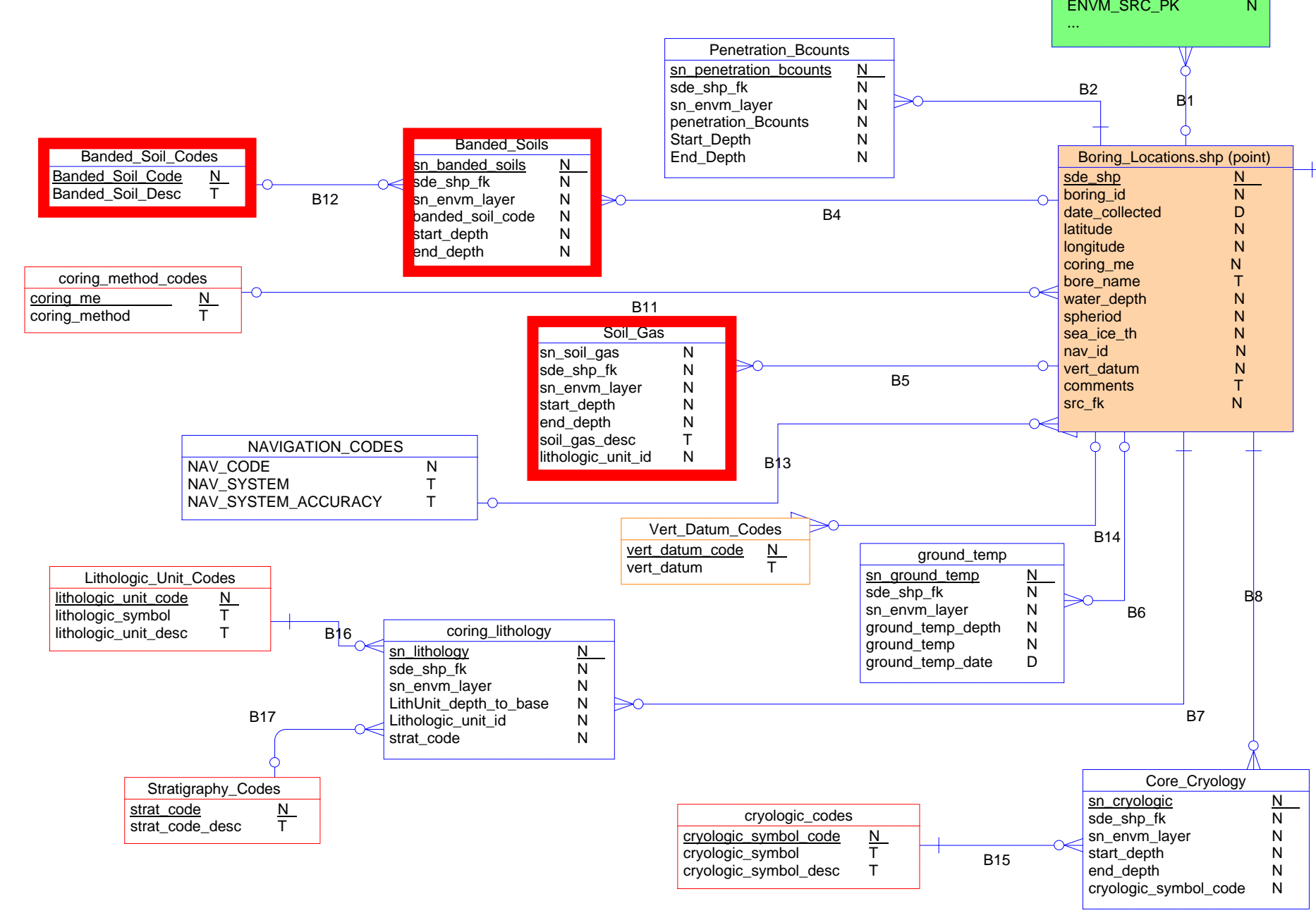
Structure (2/3)



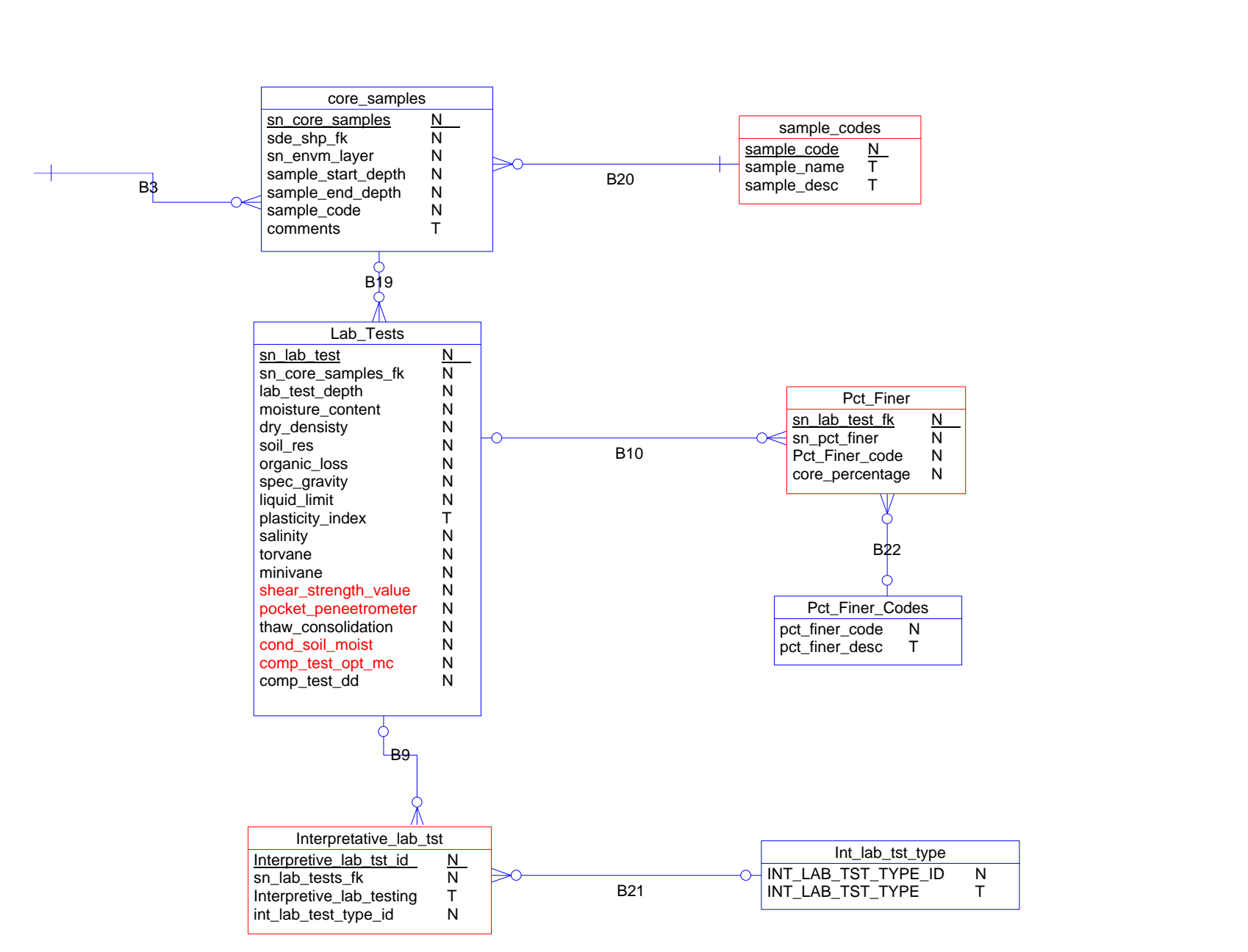
Structure (3/3)



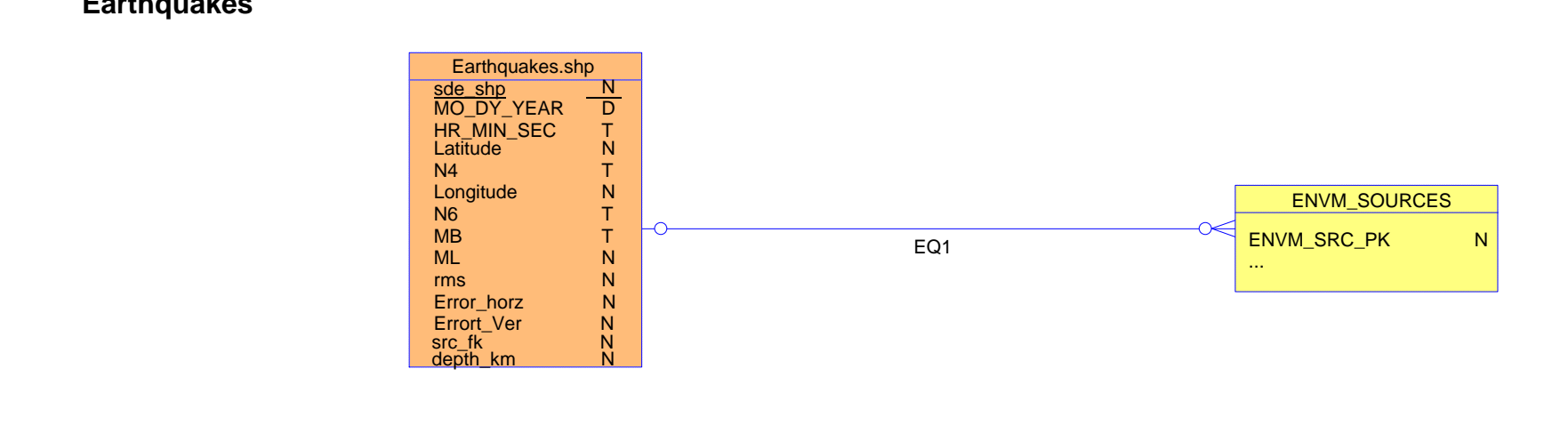
Borings (1/2)



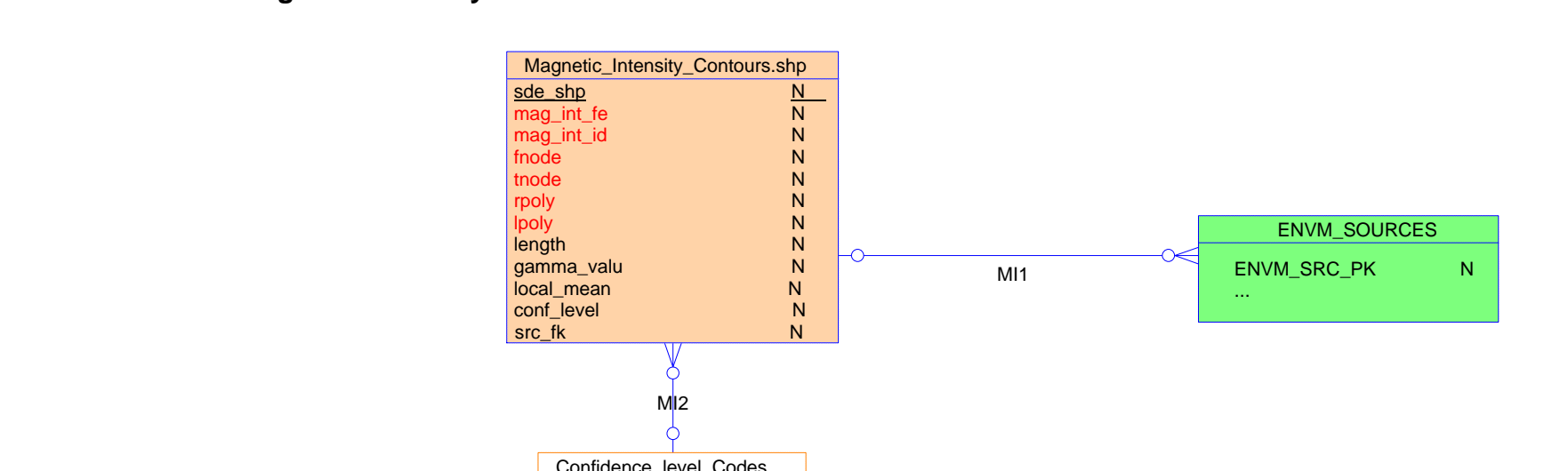
Borings (2/2)



Earthquakes



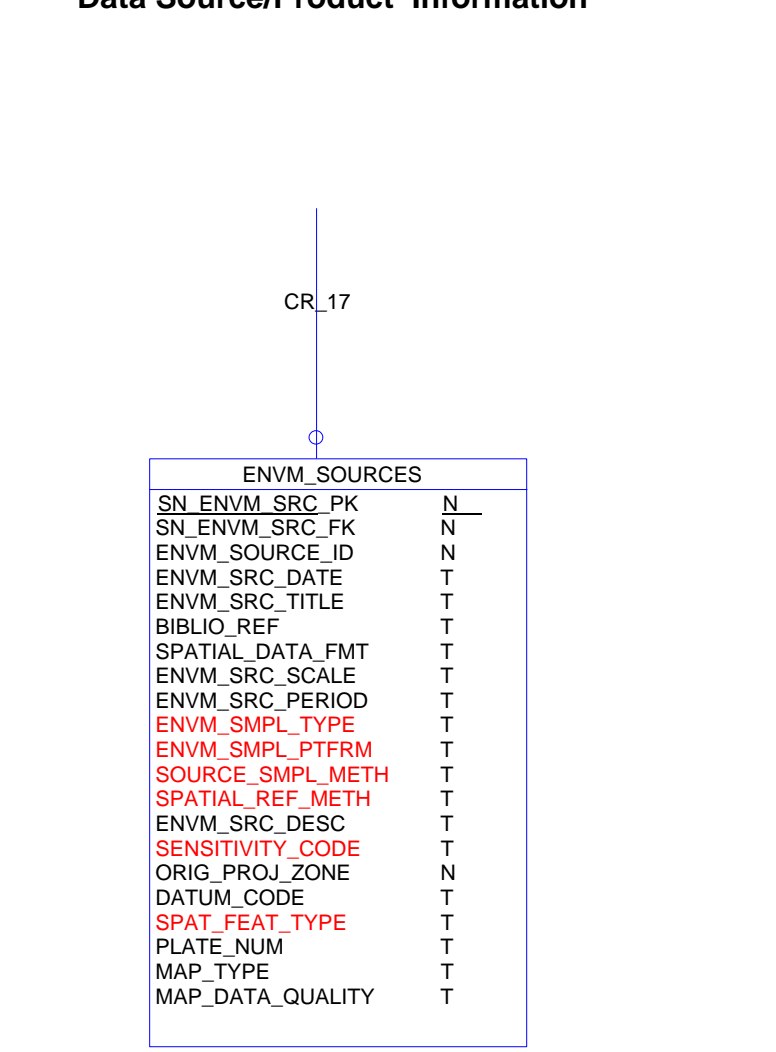
Magnetic Intensity



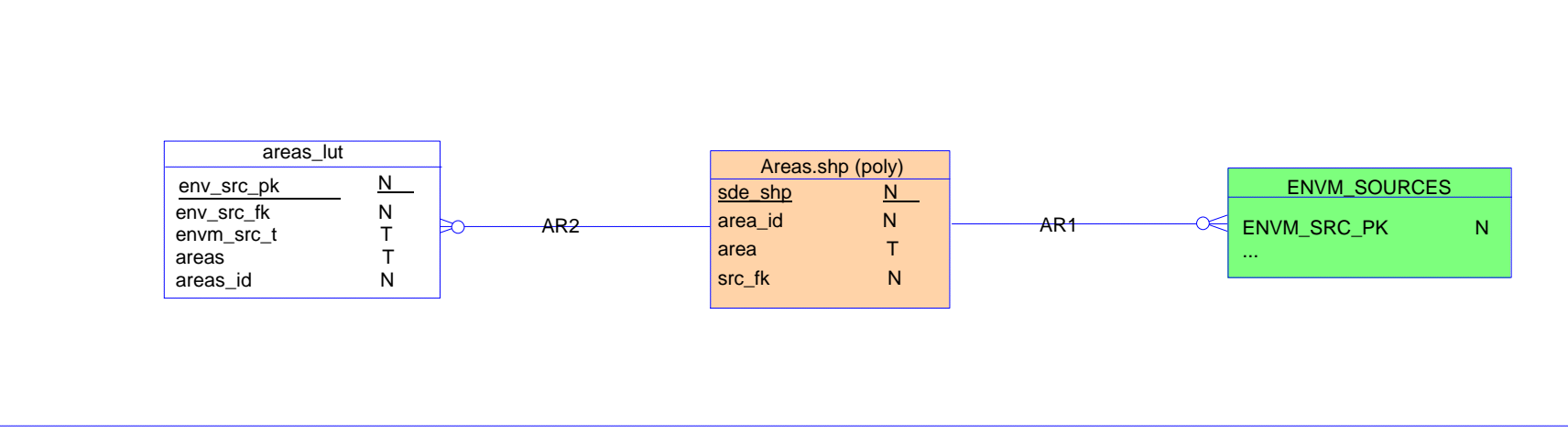
Geohazards Entity Relationship Diagram

Note: - Themes and tables outlined in bold red are not populated with data. - Field names shown in red text are not populated.

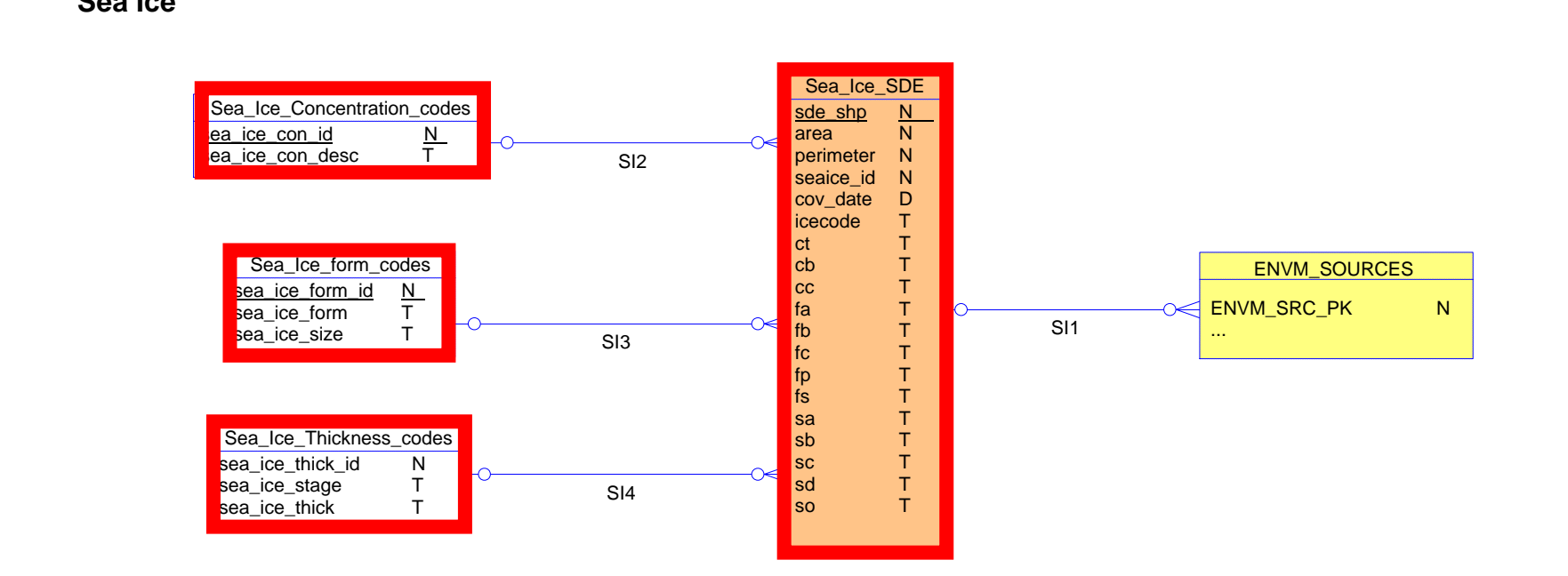
Data Source/Product Information



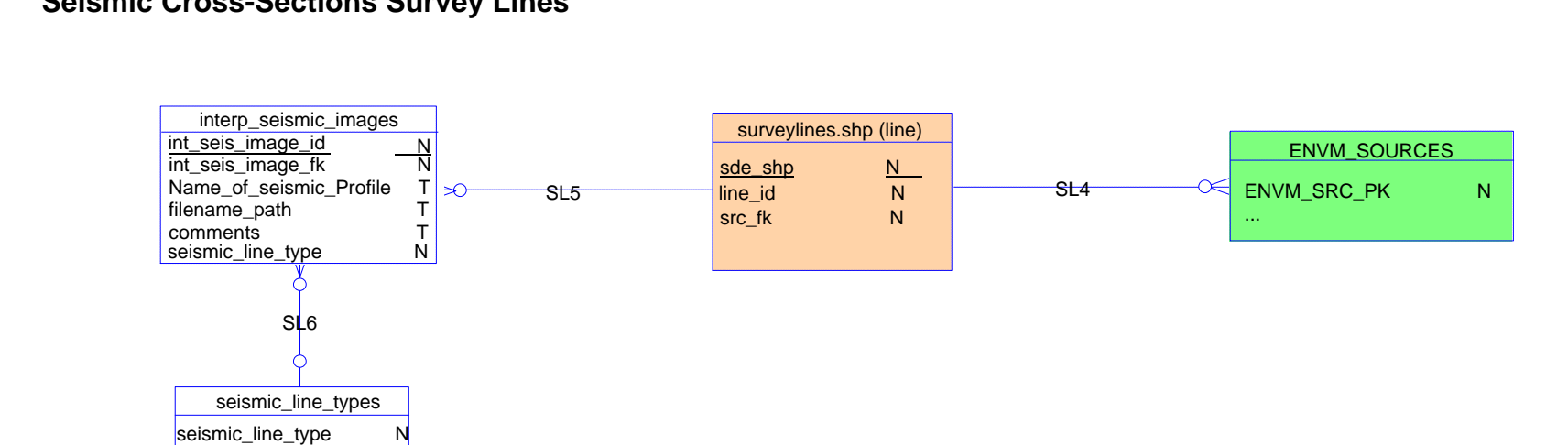
Areas



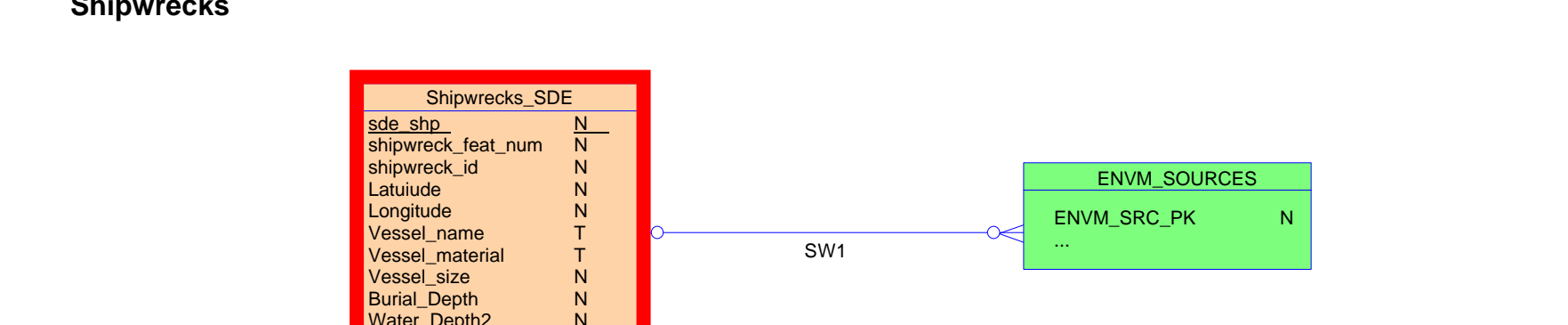
Sea Ice



Seismic Cross-Sections Survey Lines



Shipwrecks



Data Dictionary

Theme	Table Name	Contractor DE Name	Data Element Description	Sensitivity (1)	Data Type
BATHYMETRY	Bathy_Contour.shp	conf_level	Confidence code for the arc. foreign key to Confidence Level table	U	number
BATHYMETRY	Bathy_Contour.shp	depth_valu	bathymetry contour value	U	number
BATHYMETRY	Bathy_Contour.shp	sde_shp	unique sde identification number	U	number
BATHYMETRY	Bathy_Contour.shp	bathy_cont	contour id number	U	number
BATHYMETRY	Bathy_Contour.shp	class_fk	foreign key to bathy_class table	U	number
BATHYMETRY	Bathy_Contour.shp	src_fk	foreign key to envm_src table	U	number
BATHYMETRY	Bathy_Spot_Elev.shp	depth	bathymetry value at this point	U	number
BATHYMETRY	Bathy_Spot_Elev.shp	bathy_spot	unique identification number	U	number
BATHYMETRY	Bathy_Spot_Elev.shp	sde_shp	unique sde identification number	U	number
BATHYMETRY	Bathy_Spot_Elev.shp	class_fk	foreign key to bathy_spot_class table	U	number
BATHYMETRY	Bathy_Spot_Elev.shp	depth2	bathymetry value at this point * (-1)	U	number
BATHYMETRY	Bathy_Spot_Elev.shp	src_fk	foreign to key envm_src table	U	number
BATHYMETRY	Regional_Bathy.shp	sde_shp	unique sde identification number	U	
BATHYMETRY	Regional_Bathy.shp	depth	depth	U	number
BATHYMETRY	Regional_Bathy.shp	source	source information	U	number
BATHYMETRY	Regional_Bathy.shp	src_fk	foreign key to envm_src table	U	number
BATHYMETRY	Bathymetry_Class	comments	legend text plus other comments as appropriate	U	text
BATHYMETRY	Bathymetry_Class	description	Description of bathymetry class record	U	text
BATHYMETRY	Bathymetry_Class	contour_int	bathymetry contour interval in meters	U	text
BATHYMETRY	Bathymetry_Class	smooth_flag	Yes indicates substantial smoothing of contours to accomodate ice gouging	U	number
BATHYMETRY	Bathymetry_Class	sn_bathy_class	unique class identification number	U	boolean
BATHYMETRY	Bathymetry_Class	Vel_sound	speed of sound in meters/second	U	number
BATHYMETRY	Bathymetry_Class	vert_datum_code	code for the vertical datum the measurements are referenced to; foreign	U	number
BATHYMETRY	Bathy_Spot_Class	sn_bathy_spot_class	unique class identification number	U	number
BATHYMETRY	Bathy_Spot_Class	description	description for bathymetry spot class	U	text
BATHYMETRY	Bathy_Spot_Class	comments	additional comments for bathy spot class records	U	text
BATHYMETRY	Bathy_Spot_Class	Vel_sound	speed of sound in meters/second	U	number
BATHYMETRY	Bathy_Spot_Class	vert_datum_code	code for the vertical datum the measurements are referenced to; foreign	U	number
BORINGS	Banded_Soil_Codes	Banded_Soil_desc	Description of banded soils	U	text
BORINGS	Banded_Soil_Codes	Banded_Soil_code	code for banded soil type	U	number
BORINGS	Banded_Soils	Banded_Soil_code	foreign key to Banded Soil Type	U	number
BORINGS	Banded_Soils	end_depth	End depth of banded soil	U	number
BORINGS	Banded_Soils	sde_shp_fk	It is the foreign key to the soil boring (Boring Locations Point feature table)	U	number
BORINGS	Banded_Soils	sn_banded_soils	unique identification number for this unit of banded soils	U	number
BORINGS	Banded_Soils	sn_envm_layer	It is the foreign key to the soil boring (Boring Locations Point feature table)	U	number
BORINGS	Banded_Soils	start_depth	Start depth of banded soil	U	number
BORINGS	Boring_Locations.shp	bore_name	name of bore	U	text
BORINGS	Boring_Locations.shp	coring_met	foreign key (code) to Coring_Method	U	number
BORINGS	Boring_Locations.shp	date_colle	Date soil boring was drilled or sample collected	U	date
BORINGS	Boring_Locations.shp	latitude	Latitude of soil boring or sample location	U	number
BORINGS	Boring_Locations.shp	longitude	Longitude of soil boring or sample location	U	number
BORINGS	Boring_Locations.shp	sde_shp	unique sde identification number for this soil boring	U	number
BORINGS	Boring_Locations.shp	sea_ice_th	thickness of sea ice in meters at soil boring or sample location on date	U	number
BORINGS	Boring_Locations.shp	sn_envm_layer	unique identifier for source of this boring location	U	number
BORINGS	Boring_Locations.shp	spheroid	reference spheroid in which the latitude and longitude are measured	U	number
BORINGS	Boring_Locations.shp	vert_datum	code for the vertical datum the measurements are referenced to; foreign	U	number
BORINGS	Boring_Locations.shp	nav_id	link to navigation systems table	U	number
BORINGS	Boring_Locations.shp	water_depth	water depth at soil boring or sample location on date collected	U	number
BORINGS	Boring_Locations.shp	comments	comments	U	text
BORINGS	Boring_Locations.shp	src_fk	foreign key to envm_src table	U	number
BORINGS	Core_cryology	cryologic_symbol_code	code for the cryology of the unit. foreign key to Cryologic_Symbol table	U	number
BORINGS	Core_cryology	end_depth	base of cryologic unit in meters	U	number
BORINGS	Core_cryology	sde_shp_fk	link to the soil boring to which this core cryology applies. foreign key to	U	number
BORINGS	Core_cryology	sn_cryologic	unique id for each cryological unit	U	number
BORINGS	Core_cryology	sn_envm_layer	part of foreign key to boring locations SDE	U	number
BORINGS	Core_cryology	start_depth	top of cryologic unit in meters	U	number
BORINGS	Core_Samples	sample_end_depth	end depth for core sample	U	number
BORINGS	Core_Samples	sample_start_depth	start depth for core sample	U	number
BORINGS	Core_Samples	sample_code	code for type of sample taken. Link to sample_type table	U	number
BORINGS	Core_Samples	sde_shp_fk	part of identifier for source of this boring location	U	number
BORINGS	Core_Samples	sn_core_samples	unique identifier for each core sample	U	number
BORINGS	Core_Samples	sn_envm_layer	unique identifier for layer of this boring location	U	number
BORINGS	Core_Samples	comments	comments	U	text
BORINGS	Coring_Lithology	Lithologic_unit_id	code for the geologic unit. foreign key to Lithologic_Unit table	U	number
BORINGS	Coring_Lithology	LithUnit_depth_to_base	base of lithologic unit	U	long float
BORINGS	Coring_Lithology	sde_shp_fk	foreign key to Boring Locations point feature table	U	number
BORINGS	Coring_Lithology	sn_envm_layer	link to the soil boring from which this core sample came. foreign key to	U	number
BORINGS	Coring_Lithology	sn_lithology	unique id to identify this lithologic unit in the core	U	number
BORINGS	Coring_Lithology	strat_code	code for the stratigraphy of the unit isopached. Foreign key to the Stratigraphy_	U	number
BORINGS	Coring_Method_Codes	coring_method	coring method	U	text
BORINGS	Coring_Method_Codes	coring_me	unique id	U	number
BORINGS	Cryologic_Codes	cryologic_symbol	The standard cryologic symbol	U	text
BORINGS	Cryologic_Codes	cryologic_symbol_desc	Description for the cryologic symbol	U	text
BORINGS	Cryologic_Codes	cryologic_symbol_code	unique id for each cryologic code combination	U	number
BORINGS	Ground_temp	ground_temp	temperature reading for that depth	U	number
BORINGS	Ground_temp	ground_temp_date	date on which temperature reading was taken	U	date
BORINGS	Ground_temp	ground_temp_depth	depth at which temperature reading was taken	U	number
BORINGS	Ground_temp	sde_shp_fk	link to the soil boring to which this ground temperature measurement	U	number
BORINGS	Ground_temp	sn_envm_layer	foreign key to Boring Locations point feature table	U	number
BORINGS	Ground_temp	sn_ground_temp	unique identification number for the temperature reading	U	number
BORINGS	Interpretive_lab_tst	interpretive_lab_testing	type of testing performed	U	text
BORINGS	Interpretive_lab_tst	interpretive_lab_tst_id	unique identification number for type of lab testing performed	U	number
BORINGS	Interpretive_lab_tst	sn_lab_test_id	foreign key to link to the lab test table from which the lab test sample	U	number
BORINGS	Interpretive_lab_tst	int_lab_tst_type_id	foreign key to link to interpretative lab test type	U	number
BORINGS	Interpretive_lab_tst_type	int_lab_tst_type_id	unique identification number for type of lab testing performed	U	number
BORINGS	Interpretive_lab_tst_type	int_lab_tst_type	description of interpretative lab test type	U	number
BORINGS	Lab_Tests	comp_test_dd	results of compaction test dry density	U	number
BORINGS	Lab_Tests	lab_test_depth	depth at which lab test was taken	U	number

Theme	Table Name	Contractor DE Name	Data Element Description	Sensitivity (1)	Data Type
BORINGS	Lab_Tests	comp_test_opt_mc	results of compaction test at optimum moisture content	U	number
BORINGS	Lab_Tests	cond_soil_moist	conductivity of soil moisture	U	number
BORINGS	Lab_Tests	dry_density	density of sample after drying	U	number
BORINGS	Lab_Tests	liquid_limit	liquid limit of sample	U	number
BORINGS	Lab_Tests	organic_loss	organic loss of sample	U	number
BORINGS	Lab_Tests	plasticity_index	plasticity index of sample	U	number
BORINGS	Lab_Tests	moisture_content	moisture content of sample	U	number
BORINGS	Lab_Tests	pocket_penetrometer	pocket penetrometer reading if taken	U	number
BORINGS	Lab_Tests	salinity	salinity of sample	U	number
BORINGS	Lab_Tests	shear_strength_value	hand vane reading if taken	U	number
BORINGS	Lab_Tests	sn_core_samples_fk	code to identify the core sample the lab test was performed on, foreign		
BORINGS	Lab_Tests	sn_lab_Test	unique identifier for the lab test suite		
BORINGS	Lab_Tests	soil_res	soil resistivity default measurement is by ASTM G-57	U	number
BORINGS	Lab_Tests	spec_gravity	specific gravity of the sample	U	number
BORINGS	Lab_Tests	thaw_consolidation	thaw consolidation of the sample	U	number
BORINGS	Lab_Tests	torvane	measurement of torvane value	U	number
BORINGS	Lab_Tests	minivane	measurement of minivane value	U	number
BORINGS	Lithologic_Unit_Codes	lithologic_unit_symbol	uniform soil code	U	text
BORINGS	Lithologic_Unit_Codes	lithologic_unit_desc	uniform soil code description	U	text
BORINGS	Lithologic_Unit_Codes	lithologic_unit_code	unique numeric code for uniform soil code combinations	U	number
BORINGS	Pct_Finer	core_percentage	Percentage of core with this finer value	U	number
BORINGS	Pct_Finer	pct_finer_code	code of Pct_finer	U	text
BORINGS	Pct_Finer	sn_lab_test_fk	foreign key to link to the core_sample tables, ties the percent finer	U	number
BORINGS	Pct_Finer	sn_pct_finer	unique identifier for table	U	number
BORINGS	Pct_Finer_Codes	pct_finer_code	unique identifier for table	U	number
BORINGS	Pct_Finer_Codes	pct_finer_desc	Description of Percentage finer	U	text
BORINGS	Penetration_Bcounts	end_depth	ending depth for the penetration blow count measurement	U	number
BORINGS	Penetration_Bcounts	penetration_Bcounts	penetration blow count measurement	U	number
BORINGS	Penetration_Bcounts	sde_shp_fk	link to the soil boring to which this Penetration Blow Count measurement	U	number
BORINGS	Penetration_Bcounts	sn_envm_layer	link to the soil boring to which this Penetration Blow Count measurement	U	number
BORINGS	Penetration_Bcounts	sn_penetration_bcounts	unique id for this measurement of penetration blow counts	U	number
BORINGS	Penetration_Bcounts	start_depth	starting depth for this penetration blow count measurement	U	number
BORINGS	Sample_Codes	sample_name	sampling technique used	U	text
BORINGS	Sample_Codes	sample_code	unique identifier for type of sample taken	U	number
BORINGS	Sample_Codes	sample_desc	Description for sampling technique used	U	text
BORINGS	soil_gas	end_depth	ending depth for this soil gas observation	U	number
BORINGS	soil_gas	Lithologic_unit_id	code for the geologic unit at the soil gas observation, foreign key	U	number
BORINGS	soil_gas	sn_soil_gas	unique identifier for this soil gas observation	U	number
BORINGS	soil_gas	soil_gas_desc	description of this soil gas observation code for the environmental layer	U	text
BORINGS	soil_gas	start_depth	starting depth for this soil gas observation	U	number
BORINGS	soil_gas	sn_envm_layer	Layer related to data	U	number
CORIS	ENVM_SOURCES	bibliog_ref	Bibliography reference	U	text
CORIS	ENVM_SOURCES	datum_code	code to identify the original datum code 9NAD 27 OR 83)	U	text
CORIS	ENVM_SOURCES	envm_smpl_pflrm	The platform used by a source to sample	U	text
CORIS	ENVM_SOURCES	envm_smpl_type	the type of sampling used by a source	U	text
CORIS	ENVM_SOURCES	envm_source_id	unique number assigned to an environmental data source	U	number
CORIS	ENVM_SOURCES	envm_src_date	date of the environment source publication	U	date
CORIS	ENVM_SOURCES	envm_src_desc	Text description (abstract) for source	U	text
CORIS	ENVM_SOURCES	envm_src_period	the dates over which the data were collected by a source	U	text
CORIS	ENVM_SOURCES	envm_src_scale	scale applied to digital maps, hard copy maps and some digital data	U	text
CORIS	ENVM_SOURCES	envm_src_title	title or brief desc of the source document, map, or database	U	text
CORIS	ENVM_SOURCES	map_data_quality	Quality of map.	U	text
CORIS	ENVM_SOURCES	map_type	type of map used as source	U	text
CORIS	ENVM_SOURCES	plate_num	plate number of the map	U	number
CORIS	ENVM_SOURCES	Orig_proj_zone	code to identify the original projection zone of the source	U	number
CORIS	ENVM_SOURCES	sensitivity_code	code to indicate the level of sensitivity ("rop, A'dmin., etc.)	U	text
CORIS	ENVM_SOURCES	sn_envm_src_PK	autogenerated number which uniquely identify environmental source	U	number
CORIS	ENVM_SOURCES	sn_envm_src_FK	Foreign Key to refer other record in table.	U	number
CORIS	ENVM_SOURCES	source_smpl_meth	Source sampling method	U	text
CORIS	ENVM_SOURCES	spat_feat_type	code to indicate the feature type (poly, line, point, raster)	U	text
CORIS	ENVM_SOURCES	spatial_data_frm	the type of source used: hard copy maps, text, hard-copy tables, etc.	U	text
CORIS	ENVM_SOURCES	spatial_ref_meth	Spatial referencing method	U	text
CORIS	NAV_CODES	nav_id	uniquely identifies the navigation code records	U	number
CORIS	NAV_CODES	nav_system	Navigation system used	U	text
CORIS	NAV_CODES	nav_system_accuracy	Accuracy of navigation system	U	text
EARTHQUAKES	Earthquakes.shp	MO_DY_YEAR	Date of earthquake	U	date
EARTHQUAKES	Earthquakes.shp	Latitude	Latitude of earthquake	U	number
EARTHQUAKES	Earthquakes.shp	N4	North-South designator	U	text
EARTHQUAKES	Earthquakes.shp	Longitude	Longitude of earthquake.	U	number
EARTHQUAKES	Earthquakes.shp	N6	East-West designator	U	text
EARTHQUAKES	Earthquakes.shp	MB	Mb value of magnitude of earthquake	U	text
EARTHQUAKES	Earthquakes.shp	ML	ML value of magnitude value of earthquake	U	number
EARTHQUAKES	Earthquakes.shp	rms	root mean square value	U	number
EARTHQUAKES	Earthquakes.shp	sde_shp	unique sde identification number	U	number
EARTHQUAKES	Earthquakes.shp	Error_horz	Horizontal error limit	U	number
EARTHQUAKES	Earthquakes.shp	Error_vert	Vertical error limit	U	number
EARTHQUAKES	Earthquakes.shp	HR_MIN_SEC	time of earthquake	U	text
ICE	Drain_Cracks.shp	sde_shp	unique sde identification number	U	number
ICE	Drain_Cracks.shp	crack_ID	Unique identifier for drain cracks	U	number
ICE	Drain_Cracks.shp	Year	Year drain crack spotted	U	text
ICE	Drain_Cracks.shp	Type_ID	link to Drain Crack Type	U	number
ICE	Drain_Cracks.shp	Comments	Description or comment on drain crack.	U	text
ICE	Drain_Cracks.shp	src_fk	foreign key to envm_src table	U	number
ICE	Drain_Crack_Pts.shp	sde_shp	unique sde identification number	U	number
ICE	Drain_Crack_Pts.shp	Drain_ID	Unique identifier for drain cracks	U	number
ICE	Drain_Crack_Pts.shp	Year	Year drain crack spotted	U	text
ICE	Drain_Crack_Pts.shp	Type_ID	link to Drain Crack Type	U	number
ICE	Drain_Crack_Pts.shp	Comments	Description or comment on drain crack.	U	text
ICE	Drain_Crack_Pts.shp	src_fk	foreign key to envm_src table	U	number
ICE	Drain_Crack_Type	Drain_Crack_Type_ID	unique identifier for Drain Crack Type	U	number
ICE	Drain_Crack_Type	Drain_Crack_Type	Type classification of drain crack	U	text
ICE	Drain_Crack_Type	Drain_Crack_Pt	True or False indication if Drain Crack is a point feature.	U	text
ICE	Overflood_Limits.shp	sde_shp	unique sde identification number	U	number

Theme	Table Name	Contractor DE Name	Data Element Description	Sensitivity (1)	Data Type
ICE	Overflood_Limits.shp	overflood_id	unique identifier for overflood limits	U	number
ICE	Overflood_Limits.shp	type_id	link to Overflood Type	U	number
ICE	Overflood_Limits.shp	Comments	Description or comment on overflood limits	U	text
ICE	Overflood_Limits.shp	src_fk	foreign key to envm_src table	U	number
ICE	Overflood_Type	overflood_type_id	Unique identifier for type of overflood	U	number
ICE	Overflood_Type	overflood_type	Type of Overflood description	U	text
ICE	Ice_Gouge_Arc_Codes	ig_arc_desc	description of ice gouge arc	U	text
ICE	Ice_Gouge_Arc_Codes	ig_arc_code	unique identification for ice gouge arc type	U	number
ICE	Overflood_Limits.shp	Year	Year drain crack spotted	U	text
ICE	Ice_Gouge_Area_Codes	ig_area_desc	description of ice gouge area	U	text
ICE	Ice_Gouge_Area_Codes	ig_area_code	unique identifier for ice gouge area type	U	number
ICE	Ice_Gouge.shp	frequency	frequency of occurrence of the ice gouges in number per km	U	number
ICE	Ice_Gouge.shp	furrow_hgt	estimated average furrow height of gouges in the area	U	number
ICE	Ice_Gouge.shp	depth	depth of ice gouge	U	number
ICE	Ice_Gouge.shp	length	length of ice gouge	U	number
ICE	Ice_Gouge.shp	graphic_examp	file name for an image of a typical ice gouge in the area	U	text
ICE	Ice_Gouge.shp	ig_area_co	foreign key to Ice Gouge Area Type	U	number
ICE	Ice_Gouge.shp	maxkeels	maximum number of keels observed in a single ice gouge in the area	U	number
ICE	Ice_Gouge.shp	orientatio	orientation of ice gouge arc in degrees from 0 to 180	U	number
ICE	Ice_Gouge.shp	sde_shp	unique sde identification number	U	number
ICE	Ice_Gouge.shp	comments	Comments	U	text
ICE	Ice_Gouge.shp	description	Description of Ice Gouge	U	text
ICE	Ice_Gouge.shp	widest	width of the widest ice gouge in the area	U	number
ICE	Ice_Gouge.shp	src_fk	foreign key to envm_src table	U	number
ICE	Lines_of_Ice_Gouge.shp	ig_arc_cod	code to indicate type of ice gouge arc (individual gouge or trend of gouges).	U	number
ICE	Lines_of_Ice_Gouge.shp	sde_shp	unique sde identification number for the ice gouge arc	U	number
ICE	Lines_of_Ice_Gouge.shp	conf_level	Confidence code for the arc. foreign key to Confidence Level table	U	number
ICE	Lines_of_Ice_Gouge.shp	gouge_no	ice gouge number	U	text
ICE	Lines_of_Ice_Gouge.shp	in_width	width in inches of ice gouge	U	number
ICE	Lines_of_Ice_Gouge.shp	orient	orientation of ice gouge arc in degrees from 0 to 180	U	number
ICE	Lines_of_Ice_Gouge.shp	in_depth	depth in inches of ice gouge	U	number
ICE	Lines_of_Ice_Gouge.shp	comments	Comments	U	text
ICE	Lines_of_Ice_Gouge.shp	rdg_height	ridge height of ice gouge	U	number
ICE	Lines_of_Ice_Gouge.shp	src_fk	foreign key to envm_src table	U	number
ICE	Permafrost.shp	sde_shp	unique sde identification number for the permafrost ploygon	U	number
ICE	Permafrost.shp	permafrost_id	identification number for the permafrost ploygon	U	number
ICE	Permafrost.shp	comments	comments	U	number
ICE	Permafrost.shp	src_fk	foreign key to envm_src table	U	number
ICE	Strudel_Scour.shp	indiv	Yes / No switch to indicate this is an individual scour or an area of scoursU	U	number
ICE	Strudel_Scour.shp	max_horiz	diameter of strudel scour if individual, maximum diameter of strudel scours	U	number
ICE	Strudel_Scour.shp	s_examp	file name for an image of a typical strudel scour in the area	U	text
ICE	Strudel_Scour.shp	scour_dept	depth of strudel scour if individual, maximum depth	U	number
ICE	Strudel_Scour.shp	scour_num	Number of strudel scour from report for individual scours	U	text
ICE	Strudel_Scour.shp	sde_shp	unique sde identification number for this strudel scour polygon	U	number
ICE	Strudel_Scour.shp	water_depth	water depth at location of scour	U	number
ICE	Strudel_Scour.shp	comments	Comments	U	text
ICE	Strudel_Scour.shp	water_dep2	water depth at location of scour (-1)	U	number
ICE	Strudel_Scour.shp	scour_dep2	depth of strudel scour if individual, maximum depth (-1)	U	number
ICE	Strudel_Scour.shp	src_fk	foreign key to envm_src table	U	number
ISOPACH	Isopach.shp	conf_level	confidence code for the arc. foreign key to Confidence Level table	U	number
ISOPACH	Isopach.shp	iso_horiz	value of the isopach contour	U	number
ISOPACH	Isopach.shp	sde_shp	unique sde identification number for the isopach arc	U	number
ISOPACH	Isopach.shp	meas_code	depth or time measurement code. foreign key to Meas_Code_Ref	U	text
ISOPACH	Isopach.shp	class_fk	foreign key to Isopach Class super lookup table	U	number
ISOPACH	Isopach.shp	src_fk	foreign key to envm_src table	U	number
ISOPACH	Isopach_Class	comments	legend text plus other comments as appropriate	U	text
ISOPACH	Isopach_Class	description	Description of isopach class record	U	text
ISOPACH	Isopach_Class	meas_code	depth or time measurement code. foreign key to Meas_Code_Ref	U	text
ISOPACH	Isopach_Class	meas_contour_inv	contour interval for the isopach contours	U	number
ISOPACH	Isopach_Class	sn_isopach_class	unique id for the isopach class entry	U	number
ISOPACH	Isopach_Class	strat_code	code for the stratigraphy of the unit isopached. Foreign key to the Stratigraphy	U	number
ISOPACH	Isopach_Class	vert_datum_code	code for the vertical datum the measurements are referenced to; foreign	U	number
ISOPACH	Isopach_Class	Vel_sound	speed of sound (compression waves) in meters/second	U	number
MISC	Archaeological.shp	Arch_Feature_Desc	description of archaeological feature	U	text
MISC	Archaeological.shp	arch_id	identification number	U	number
MISC	Archaeological.shp	sde_shp	unique sde identification number	U	number
MISC	Archaeological.shp	src_fk	foreign key to envm_src table	U	number
MISC	Erosional_Cutouts.shp	eros_id	identification number for erosional cutouts	U	number
MISC	Erosional_Cutouts.shp	sde_shp	unique erosional cutout polygon sde identification number	U	number
MISC	Erosional_Cutouts.shp	comments	Comments	U	text
MISC	Erosional_Cutouts.shp	src_fk	foreign key to envm_src table	U	number
MISC	Interpreted_Section_Location.shp	comments	Comments	U	text
MISC	Interpreted_Section_Location.shp	inter_sect	identification for interpreted section	U	number
MISC	Interpreted_Section_Location.shp	file_id	file name that carries a raster image of the interpreted section	U	text
MISC	Interpreted_Section_Location.shp	sde_shp	unique identifier for the interpreted section	U	number
MISC	Interpreted_Section_Location.shp	src_fk	foreign key to envm_src table	U	number
MISC	Seafloor_vis_pt_obs.shp	file_id	file name of sample image supporting visual observation, if available	U	text
MISC	Seafloor_vis_pt_obs.shp	sde_shp	unique sde identification number for the seafloor visual observation pointU	U	number
MISC	Seafloor_vis_pt_obs.shp	seavis_code	code for type of visual observation. foreign key to Seavispt_type table	U	number
MISC	Seafloor_vis_pt_obs.shp	spotname	name of visual observation location from the report	U	text
MISC	Seafloor_vis_pt_obs.shp	vpt_id	visual point identificaiton	U	number
MISC	Seafloor_vis_pt_obs.shp	kelp_code	link to kelp code table	U	number
MISC	Seafloor_vis_pt_obs.shp	comments	Comments	U	text
MISC	Seafloor_vis_pt_obs.shp	src_fk	foreign key to envm_src table	U	number
MISC	Seafloor_Vis_Obs.shp	file_id	file name of sample image supporting visual observation, if available	U	text
MISC	Seafloor_Vis_Obs.shp	loc_name	name of visual observation location from the report	U	text
MISC	Seafloor_Vis_Obs.shp	sde_shp	unique sde identification number	U	number
MISC	Seafloor_Vis_Obs.shp	kelp_code	link to kelp code table	U	number
MISC	Seafloor_Vis_Obs.shp	comments	Comments	U	text
MISC	Seafloor_Vis_Obs.shp	seavis_code	code for type of visual observation. foreign key to Seavispt_type table	U	number
MISC	Seafloor_Vis_Obs.shp	src_fk	foreign key to envm_src table	U	number
MISC	Seavis_Codes	seavis_desc	type of sea floor visual observation that was performed	U	text
MISC	Seavis_Codes	seavis_code	sea floor visual observations code	U	number

Theme	Table Name	Contractor DE Name	Data Element Description	Sensitivity (1)	Data Type
MISC	Unidentified_Sonar_Targets.shp	sde_shp	unique sde identification number	U	number
MISC	Unidentified_Sonar_Targets.shp	ust_type_id	unique identifier for ust_type	U	number
MISC	Unidentified_Sonar_Targets.shp	src_fk	foreign key to envm_src table	U	number
MISC	UST_Type	ust_type	type of unidentified sonar target. foreign key to ust_type	U	text
MISC	UST_Type	ust_type_l	foreign key to ust_type	U	number
MISC	Shipwrecks.shp	sde_shp	unique sde identification number	U	number
MISC	Shipwrecks.shp	latitude	Latitude of shipwreck location	U	number
MISC	Shipwrecks.shp	longitude	Longitude of shipwreck location	U	number
MISC	Shipwrecks.shp	vessel_name	Vessel name	U	text
MISC	Shipwrecks.shp	vessel_size	size of vessel	U	number
MISC	Shipwrecks.shp	water_depth	depth of water at vessel location	U	number
MISC	Shipwrecks.shp	burial_depth	depth of burial of vessel	U	number
MISC	Shipwrecks.shp	Proprietary_attribute	Proprietary attribute	U	text
MISC	Shipwrecks.shp	src_fk	foreign key to envm_src table	U	number
MISC	Magnetic Intensity	sde_shp	unique sde identification number	U	number
MISC	Magnetic Intensity	gamma_valu	gamma reading of magnetometer	U	number
MISC	Magnetic Intensity	Local_Mean	mean value of reading	U	number
MISC	Magnetic Intensity	conf_level	link to confidence level of arcs	U	number
MISC	Shipwrecks.shp	vessel_material	aparent material of vessel	U	text
SEA FLOOR	BPatch_Codes	bpatch_code	unique identifier for the boulder patch type	U	number
SEA FLOOR	BPatch_Codes	bpatch_desc	type of Boulder Patch description	U	text
SEA FLOOR	Boulder_Patch.shp	bpatch_cod	code for boulder patch type. foreign key to B_Patch_Type table	U	number
SEA FLOOR	Boulder_Patch.shp	comments	Comments	U	text
SEA FLOOR	Boulder_Patch.shp	sde_shp	unique sde boulder patch polygon identification number	U	number
SEA FLOOR	Boulder_Patch.shp	desc	Description	U	text
SEA FLOOR	Boulder_Patch.shp	boulder_pa	boulder_patch_id	U	number
SEA FLOOR	Boulder_Patch.shp	src_fk	foreign key to envm_src table	U	number
SEA FLOOR	Crest.shp	crest_code	code for the crest type. foreign key to Crest_Type table	U	number
SEA FLOOR	Crest.shp	sde_shp	unique seafloor crest sde identification number	U	number
SEA FLOOR	Crest.shp	comments	Comments	U	text
SEA FLOOR	Crest.shp	crest_id	identification number	U	number
SEA FLOOR	Crest.shp	src_fk	foreign key to envm_src table	U	number
SEA FLOOR	Crest_Codes	crest_desc	seafloor crest description	U	text
SEA FLOOR	Crest_Codes	crest_code	unique identifier code for the type of seafloor crest	U	number
SEA FLOOR	Depositional_Env_Codes	dep_env	depositional environment	U	text
SEA FLOOR	Depositional_Env_Codes	dep_env_code	unique identification number for the depositional environment	U	number
MISC	Kelp_Codes	kelp_desc	description of kelp for the seafloor visual observation areas and points	U	text
MISC	Kelp_Codes	kelp_code	unique identifier for the type of kelp and coverage	U	number
SEA FLOOR	Paleo_Shoreline_Code	paleo_shoreline_desc	description of possible paleo-shoreline	U	text
SEA FLOOR	Paleo_Shoreline_Code	paleo_shoreline_code	unique identifier for possible paleo-shoreline description	U	number
SEA FLOOR	Possible_Paleo_Shoreline.shp	paleo_shor	code for the possible paleo shoreline description. foreign key to paleo	U	number
SEA FLOOR	Possible_Paleo_Shoreline.shp	comments	Comments	U	text
SEA FLOOR	Possible_Paleo_Shoreline.shp	sde_shp	unique sde identification number for the possible paleo shoreline	U	number
SEA FLOOR	Possible_Paleo_Shoreline.shp	src_fk	foreign key to envm_src table	U	number
SEA FLOOR	Sea_Floor_Features.shp	sde_shp	unique sde identification number for the seafloor feature	U	number
SEA FLOOR	Sea_Floor_Features.shp	comments	Comments	U	text
SEA FLOOR	Sea_Floor_Features.shp	seaf_code	code for the seafloor feature description. foreign key to Seafloor_Type	U	number
SEA FLOOR	Sea_Floor_Features.shp	src_fk	foreign key to envm_src table	U	number
SEA FLOOR	Seafloor_Codes	seafloor_desc	seafloor feature description	U	text
SEA FLOOR	Seafloor_Codes	seafloor_code	unique identifier for seafloor feature description	U	number
SEA FLOOR	Stratigraphy.shp	dep_env_co	code for depositional environment. foreign key to dep_env	U	number
SEA FLOOR	Stratigraphy.shp	sde_shp	unique sde identification number for the sea floor stratigraphy polygon	U	number
SEA FLOOR	Stratigraphy.shp	strat_id	identification number for the sea floor stratigraphy polygon	U	number
SEA FLOOR	Stratigraphy.shp	comments	Comments	U	text
SEA FLOOR	Stratigraphy.shp	strat_code	numeric code for soil type (foreign key to Stratigraphy_type table)	U	number
SEA FLOOR	Stratigraphy.shp	src_fk	foreign key to envm_src table	U	number
SEA FLOOR	Unst_sea_type	unst_sea_type	unstable seafloor description	U	text
SEA FLOOR	Unst_sea_type	unst_sea_type_id	unique identifier for type of unstable seafloor	U	number
SEA FLOOR	Unstable_Seafloor_Sediment.shp	sde_shp	unique sde identification number for the unstable seafloor sediment polygon	U	number
SEA FLOOR	Unstable_Seafloor_Sediment.shp	comments	Comments	U	text
SEA FLOOR	Unstable_Seafloor_Sediment.shp	type_id	code for the type of unstable seafloor. foreign key to Unst_sea_type table	U	number
SEA FLOOR	Unstable_Seafloor_Sediment.shp	src_fk	foreign key to envm_src table	U	number
SEA ICE	sea_ice_concentration_codes	sea_ice_con_desc	Textural description of the sea ice concentration	U	text
SEA ICE	sea_ice_concentration_codes	sea_ice_con_id	sea_ice_concentration code	U	text
SEA ICE	sea_ice_form_codes	sea_ice_form	sea ice form text	U	text
SEA ICE	sea_ice_form_codes	sea_ice_frm_id	sea ice form code	U	text
SEA ICE	sea_ice_form_codes	sea_ice_size	sea ice size/concentration	U	text
SEA ICE	Sea_Ice.shp	ca	Partial Concentration code for thickest sea ice with concentration greater	U	text
SEA ICE	Sea_Ice.shp	cb	Partial Concentration code for second thickest sea iceLinks to sea_ice	U	text
SEA ICE	Sea_Ice.shp	cc	Partial Concentration code for third thickest sea ice Links to sea_ice_concentration	U	text
SEA ICE	Sea_Ice.shp	cov_date	The effective date for the sea ice coverage	U	date
SEA ICE	Sea_Ice.shp	ct	Total Sea Ice Concentration Code - links to sea_ice_concentration tableU	U	text
SEA ICE	Sea_Ice.shp	fa	Form of sea ice code for thickest sea ice Links to sea_ice_form table	U	text
SEA ICE	Sea_Ice.shp	fb	Form of sea ice code for second thickest sea ice Links to sea_ice_form	U	text
SEA ICE	Sea_Ice.shp	fc	Form of sea ice code for third thickest sea ice Links to sea_ice_form tableU	U	text
SEA ICE	Sea_Ice.shp	fp	Form of sea ice code for predominant sea ice type Links to sea_ice_form	U	text
SEA ICE	Sea_Ice.shp	fs	Form of sea ice code for secondary sea ice type Links to sea_ice_form table	U	text
SEA ICE	Sea_Ice.shp	sa	Thickness of ice and stage of development code for thickest sea ice Links	U	text
SEA ICE	Sea_Ice.shp	sb	Thickness of ice and stage of development code for second thickest sea	U	text
SEA ICE	Sea_Ice.shp	sc	Thickness of ice and stage of development code for third thickest sea ice	U	text
SEA ICE	Sea_Ice.shp	sd	Stage of development for any remaining class of ice not reported under	U	text
SEA ICE	Sea_Ice.shp	sde_shp	unique sde identification number for the sea ice polygon	U	number
SEA ICE	Sea_Ice.shp	so	Stage of development code for ice thicker than reported under sa_cd, but	U	number
SEA ICE	sea_ice_thickness_codes	sea_ice_stage	Textural description of the sea ice stage of development	U	text
SEA ICE	sea_ice_thickness_codes	sea_ice_thick	thickness range for this sea ice class in cm	U	text
SEA ICE	sea_ice_thickness_codes	sea_ice_thick_id	sea_ice_thickness code	U	text
SEISMIC ANOMALIES	pgas_codes	pgas_desc	nature of the potential gas hazard associated with the seismic anomaly	U	text
SEISMIC ANOMALIES	pgas_codes	pgas_code	unique identification code for the nature of the potential gas hazard associated	U	number
SEISMIC ANOMALIES	Seismic_Type	seis_type	seismic anomaly type description: see values	U	text
SEISMIC ANOMALIES	Seismic_Type	seis_type_id	seismic anomaly type code: 1 to 13	U	number
SEISMIC ANOMALIES	SEIS_ANOMALY_ANNO.shp	sde_shp	unique sde identification number for this seismic area annotation point	U	number
SEISMIC ANOMALIES	SEIS_ANOMALY_ANNO.shp	sde_shp_fk	foreign key to SEISMIC ANOM AREA SDE polygon to which this annotation	U	number
SEISMIC ANOMALIES	SEIS_ANOMALY_ANNO.shp	shallow_ex	shallowest expression of the anomaly at this point	U	number

Theme	Table Name	Contractor DE Name	Data Element Description	Sensitivity (1)	Data Type
SEISMIC ANOMALIES	SEIS_ANOMALY_ANNO.shp	time2	deepest expression of the anomaly at this point	U	number
SEISMIC ANOMALIES	SEIS_ANOMALY_ANNO.shp	seismic_an	identification number for the seismic area anomaly annotation records	U	number
SEISMIC ANOMALIES	SEIS_ANOMALY_ANNO.shp	meas_code	link to Meas_codes table	U	number
SEISMIC ANOMALIES	seis_source_codes	seis_source	description of source type	U	text
SEISMIC ANOMALIES	seis_source_codes	seis_source_code	unique identifier for this seismic source	U	number
SEISMIC ANOMALIES	seismic_anomaly_area.shp	sde_shp	unique sde identification number for the seismic anomaly polygon	U	number
SEISMIC ANOMALIES	seismic_anomaly_area.shp	class_fk	Code to the class of seismic anomalies. foreign key to Seismic Area Class	U	number
SEISMIC ANOMALIES	seismic_anomaly_area.shp	seismic_ar	identification number for seismic area records	U	number
SEISMIC ANOMALIES	seismic_anomaly_area.shp	src_fk	foreign key to envm_src table	U	number
SEISMIC ANOMALIES	Seismic Area Class	comments	legend text plus other comments as appropriate	U	text
SEISMIC ANOMALIES	Seismic Area Class	meas_code	code to identify whether measurements are taken in time or depth. foreign	U	text
SEISMIC ANOMALIES	Seismic Area Class	meas_max	maximum shallowest expression of anomaly on map if in depth (m)	U	number
SEISMIC ANOMALIES	Seismic Area Class	meas_min	minimum shallowest expression of anomaly on map if in depth (m)	U	number
SEISMIC ANOMALIES	Seismic Area Class	pgas_code	code for the type and likelihood of gas as stated in the report. foreign	U	number
SEISMIC ANOMALIES	Seismic Area Class	seis_type_id	code for the category the seismic anomaly falls into. foreign key to Seismic	U	number
SEISMIC ANOMALIES	Seismic Area Class	sn_seismic_class	unique identification number for this class of seismic anomalies	U	number
SEISMIC ANOMALIES	Seismic Area Class	Vel_sound	speed of sound in meters/second	U	number
SEISMIC ANOMALIES	Seismic Area Class	vert_datum_code	code for the vertical datum the measurements are referenced to; foreign	U	number
SEISMIC ANOMALIES	Seismic Area Class	description	Description of record	U	number
SEISMIC ANOMALIES	Seismic_Source_Codes	seismic_source_id	unique identifier for seismic source		
SEISMIC ANOMALIES	Seismic_Source_Codes	seismic_source	description of seismic source used		
STRUCTURE	Axis_Code	axis_desc	type of structural axis: Anticline, syncline, linear	U	text
STRUCTURE	Axis_Code	axis_code	axis type code: 1,2,3	U	number
SEISMIC ANOMALIES	Seismic Area Class	seis_source_code	code for the instruments that detected the seismic anomaly. foreign key	U	number
STRUCTURE	Buried_Channel_Bndy.shp	conf_level	code for the confidence level of the channel boundary. foreign key to CU	U	number
STRUCTURE	Buried_Channel_Bndy.shp	sde_shp	unique sde identification number for the boundary arc of the burried channel	U	number
STRUCTURE	Buried_Channel_Bndy.shp	channel_bn	identification number for channel boundary record	U	number
STRUCTURE	Buried_Channel_Bndy.shp	sde_shp_fk	link to the burried channel polygon that this are is the boundary of. foreign	U	number
STRUCTURE	Buried_Channel_Bndy.shp	src_fk	foreign key to envm_src table	U	number
STRUCTURE	Buried_Channel_Anno.shp	meas_code	code to identify whether measurements are taken in time or depth. foreign	U	text
STRUCTURE	Buried_Channel_Anno.shp	meas_value	depth (time) to the base of the burried channel	U	number
STRUCTURE	Buried_Channel_Anno.shp	buried_cha	identification number for burried channel annotation records	U	number
STRUCTURE	Buried_Channel_Anno.shp	sde_shp	unique sde identification number for this burried channel annotation point	U	number
STRUCTURE	Buried_Channel_Anno.shp	sde_shp_fk	link to the burried channel polygon that this annotation point applies to.	U	number
STRUCTURE	Buried_Channel.shp	base_mate	code for the stratigraphy of the material burried channel cut into (holocene	U	number
STRUCTURE	Buried_Channel.shp	conf_level_code	code for the confidence level of the channel. foreign key to Confidence	U	number
STRUCTURE	Buried_Channel.shp	chan_code	link to chan_code table	U	number
STRUCTURE	Buried_Channel.shp	fill_mate	code for the stratigraphy of the material filling the burried channel (holocene	U	number
STRUCTURE	Buried_Channel.shp	sde_shp	unique sde identification number for the burried channel polygon	U	number
STRUCTURE	Buried_Channel.shp	buried_cha	identification of burried channel record	U	number
STRUCTURE	Buried_Channel.shp	comments	Comments	U	text
STRUCTURE	Buried_Channel.shp	desc	Description of record	U	text
STRUCTURE	Buried_Channel.shp	src_fk	foreign key to envm_src table	U	number
STRUCTURE	Chan_Codes	chan_desc	burried channel type: distributary, main, fragment	U	text
STRUCTURE	Chan_Codes	chan_code	code for the type of the burried channel	U	number
STRUCTURE	Dip_Point.shp	angle	angle of dip at the measuring point	U	number
STRUCTURE	Dip_Point.shp	sde_shp	unique sde identification number for the dip indication point	U	number
STRUCTURE	Dip_Point.shp	comments	Comments	U	text
STRUCTURE	Dip_Point.shp	src_fk	foreign key to envm_src table	U	number
STRUCTURE	Fault_Annotation.shp	meas_code	code to identify whether measurements are taken in time or depth. foreign	U	text
STRUCTURE	Fault_Annotation.shp	meas_point	the shallowest expression of the fault at this point	U	number
STRUCTURE	Fault_Annotation.shp	meas_throw	the throw of the fault measured at this point	U	number
STRUCTURE	Fault_Annotation.shp	sde_shp	unique sde identification number for this annotation point	U	number
STRUCTURE	Fault_Annotation.shp	sde_shp_fk	line to the fault to which this annotation applies. foreign key to Fault Lines	U	number
STRUCTURE	Fault_Annotation.shp	fault_anno	identification to record	U	number
STRUCTURE	Fault_Depth_Codes	fault_depth	fault depth text - shallow; deep; unknown	U	text
STRUCTURE	Fault_Depth_Codes	fault_depth_code	fault depth code - 1,2,3	U	number
STRUCTURE	Fault_Lines_Class	comments	legend text plus other comments as appropriate	U	text
STRUCTURE	Fault_Lines_Class	fault_depth_code	code to indicate whether the fault is shallower than one second in two way	U	number
STRUCTURE	Fault_Lines_Class	sn_fault_lines_class	unique class identification number	U	number
STRUCTURE	Fault_Lines.shp	conf_level	confidence code for the arc. foreign key to Confidence Level table	U	number
STRUCTURE	Fault_Lines.shp	sde_shp	unique sde identification number for this fault arc	U	number
STRUCTURE	Fault_Lines.shp	fault_lines	identification to record	U	number
STRUCTURE	Fault_Lines.shp	class_id	foreign key to Fault Lines Class	U	number
STRUCTURE	Fault_Lines.shp	src_fk	foreign key to envm_src table	U	number
STRUCTURE	Fault_Bndy_Anno.shp	meas_code	code to identify whether measurements are taken in time or depth. foreign	U	text
STRUCTURE	Fault_Bndy_Anno.shp	meas_max	maximum expression of the fault at this point	U	number
STRUCTURE	Fault_Bndy_Anno.shp	meas_min	minimum expression of the fault at this point	U	number
STRUCTURE	Fault_Bndy_Anno.shp	sde_shp	unique sde identification number for this fault plane annotation point	U	number
STRUCTURE	Fault_Bndy_Anno.shp	sde_shp_fk	link to the fault plane polygon that this annotation to which this annotation	U	number
STRUCTURE	Fault_Bndy_Anno.shp	fault_anno	identification to record	U	number
STRUCTURE	Fault_Plane_Boundary_Class	comments	legend text plus other comments as appropriate	U	text
STRUCTURE	Fault_Plane_Boundary_Class	cont_int	contour interval for the fault plane contours in the fault plane	U	number
STRUCTURE	Fault_Plane_Boundary_Class	sn_ft_plane_class	unique class identification number	U	number
STRUCTURE	Fault_Plane_Boundary_Class	Vel_sound	speed of sound in meters/second	U	number
STRUCTURE	Fault_Plane_Boundary_Class	vert_datum_id	code for the vertical datum the measurements are referenced to; foreign	U	number
STRUCTURE	Fault_Plane_Bndy.shp	sde_shp	unique sde identification number for the fault plane boundary	U	number
STRUCTURE	Fault_Plane_Bndy.shp	fpb_id	identification to record	U	number
STRUCTURE	Fault_Plane_Bndy.shp	class_fk	foreign key to Fault Plane Boundary class table	U	number
STRUCTURE	Fault_Plane_Bndy.shp	src_fk	foreign key to envm_src table	U	number
STRUCTURE	Fault_Plane_Str_Cntr.shp	conf_level	confidence code for the arc. foreign key to Confidence Level table	U	number
STRUCTURE	Fault_Plane_Str_Cntr.shp	meas_value	value of the structure contour	U	number
STRUCTURE	Fault_Plane_Str_Cntr.shp	meas_code	code to identify whether measurements are taken in time or depth. foreign	U	text
STRUCTURE	Fault_Plane_Str_Cntr.shp	sde_shp	unique sde identification number for each fault plane contour	U	number
STRUCTURE	Fault_Plane_Str_Cntr.shp	sde_shp_fk	link to the fault plane boundary polygon that contain these fault plane contours.	U	number
STRUCTURE	Fault_Plane_Str_Cntr.shp	fpcont_id	identification to record	U	number
STRUCTURE	Fault_Plane_Str_Cntr.shp	src_fk	foreign key to envm_src table	U	number
STRUCTURE	Fault_Zones_Class	comments	legend text plus other comments as appropriate	U	text
STRUCTURE	Fault_Zones_Class	fault_depth_code	code to indicate whether the fault is shallower than one second in two way	U	number
STRUCTURE	Fault_Zones_Class	fault_zones_type_id	link to fault zones type table	U	number
STRUCTURE	Fault_Zones_Class	sn_ft_zone_class	unique class identification number	U	number
STRUCTURE	Fault_Zones.shp	sde_shp	unique sde identification number	U	number
STRUCTURE	Fault_Zones.shp	fault_zones	identification to record	U	number

Theme	Table Name	Contractor DE Name	Data Element Description	Sensitivity (1)	Data Type
STRUCTURE	Fault_Zones.shp	class_id	foreign key to Fault Zones Class table	U	number
STRUCTURE	Fault_Zones.shp	src_fk	foreign key to envm_src table	U	number
STRUCTURE	Fault_Zones_Type	fault_zones_type	fault zone type text: complex, near surface	U	text
STRUCTURE	Fault_Zones_Type	fault_zones_type_id	code for the type of fault zone	U	number
STRUCTURE	Paleo_Structure.shp	type_id	code for the type of paleo structure. foreign key to Paleo_type table	U	number
STRUCTURE	Paleo_Structure.shp	sde_shp	unique sde identification number for the pleistocene structure	U	number
STRUCTURE	Paleo_Structure.shp	paleo_stru	identification of record	U	number
STRUCTURE	Paleo_Structure.shp	strat_code	foreign key to strat type table to determine paleo age of structure.	U	number
STRUCTURE	Paleo_Structure.shp	src_fk	foreign key to envm_src table	U	number
STRUCTURE	Paleo_Struct_Type	Paleo_Struct_type	description of paleo structure type	U	text
STRUCTURE	Paleo_Struct_Type	Paleo_Struct_type_id	unique id for paleo structure type	U	number
STRUCTURE	Struc_Axis_Anno.shp	meas_code	code to identify whether measurements are taken in time or depth. foreign	U	text
STRUCTURE	Struc_Axis_Anno.shp	meas_value	depth to the top of the structural axis at this point	U	number
STRUCTURE	Struc_Axis_Anno.shp	sde_shp	unique sde identification number for this structural axis annotation point	U	number
STRUCTURE	Struc_Axis_Anno.shp	sde_shp_fk	link to the structural axis to which this annotation applies. foreign key	U	number
STRUCTURE	Struc_Axis_Anno.shp	axis_anno	identification of record	U	number
STRUCTURE	Struc_Axis.shp	axis_code	foreign key to Axis_type table	U	number
STRUCTURE	Struc_Axis.shp	sde_shp	unique sde identification number for this structural arc	U	number
STRUCTURE	Struc_Axis.shp	structural	identification of record	U	number
STRUCTURE	Struc_Axis.shp	src_fk	foreign key to envm_src table	U	number
STRUCTURE	Structure_Class	comments	legend text plus other comments as appropriate	U	text
STRUCTURE	Structure_Class	description	Description of record	U	text
STRUCTURE	Structure_Class	meas_code	code to identify whether measurements are taken in time or depth. foreign	U	text
STRUCTURE	Structure_Class	meas_contour_int	contour interval	U	number
STRUCTURE	Structure_Class	meas_max	measured maximum contour value	U	number
STRUCTURE	Structure_Class	meas_min	measured minimum contour value	U	number
STRUCTURE	Structure_Class	sn_structure_class	unique class identification number	U	number
STRUCTURE	Structure_Class	Vel_sound	speed of sound in meters/second	U	number
STRUCTURE	Structure_Class	vert_datum_code	code for the vertical datum the measurements are referenced to; foreign	U	number
STRUCTURE	Structure_Contours.shp	conf_level	confidence code for the arc. foreign key to Confidence Level table	U	number
STRUCTURE	Struc_Axis.shp	comments	Comments	U	text
STRUCTURE	Structure_Contours.shp	meas_value	value of the structure contour	U	number
STRUCTURE	Structure_Contours.shp	meas_co	code to identify whether measurements are taken in time or depth. foreign	U	number
STRUCTURE	Structure_Contours.shp	sde_shp	unique sde identification number for this structural contour	U	number
STRUCTURE	Structure_Contours.shp	s_id	identification of record	U	number
STRUCTURE	Structure_Contours.shp	str_horiz	foreign key to Structure Class	U	number
STRUCTURE	Structure_Contours.shp	src_fk	foreign key to envm_src table	U	number
STRUCTURE	Structure_Spot.shp	comments	legend text plus other comments as appropriate	U	text
STRUCTURE	Structure_Spot.shp	meas_code	code to identify whether measurements are taken in time or depth. foreign	U	number
STRUCTURE	Structure_Spot.shp	meas_pt	the depth to the mapped structure at this point	U	number
STRUCTURE	Structure_Spot.shp	structure	identification number	U	number
STRUCTURE	Structure_Spot.shp	vert_datum	code for the vertical datum the measurements are referenced to; foreign	U	number
STRUCTURE	Structure_Spot.shp	Vel_sound	speed of sound in meters/second	U	number
STRUCTURE	Structure_Spot.shp	sde_shp	unique sde identification number for this structure point	U	number
STRUCTURE	Structure_Spot.shp	src_fk	foreign key to envm_src table	U	number
STRUCTURE	Fault_Zone_Arcs.shp	sde_shp	unique sde identification number for this structure point	U	number
STRUCTURE	Fault_Zone_Arcs.shp	fzarc_id	identification of record	U	number
STRUCTURE	Fault_Zone_Arcs.shp	sde_shp_fk	link to the fault zones table records to which these arc apply.	U	number
STRUCTURE	Fault_Zone_Arcs.shp	conf_level	confidence code for the arc. foreign key to Confidence Level table	U	number
STRUCTURE	Fault_Zone_Arcs.shp	src_fk	foreign key to envm_src table	U	number
SURVEY LINES	Acquisition_Equip	equip_id	list of the acoustic sources used to acquire the data on this line	U	number
SURVEY LINES	Acquisition_Equip	equip_desc	description of acquisition equipment used in survey.	U	text
SURVEY LINES	shot_pt.shp	line_id	line # on map - assigned by the geohazard survey contractor	U	text
SURVEY LINES	shot_pt.shp	shot_pt_id	shotpoint # on map - assigned by the geohazard survey contractor	U	text
SURVEY LINES	shot_pt.shp	sde_shp	unique sde identification number for this geohazard survey line	U	number
SURVEY LINES	shot_pt.shp	equip_id	link to the acoustic sources used to acquire the data on this line. foreign	U	number
SURVEY LINES	shot_pt.shp	nav_code	link to the navigation system table.	U	number
SURVEY LINES	shot_pt.shp	src_fk	foreign key to envm_src table	U	number
SURVEY LINES	surveylines.shp	sde_shp	unique sde identification number for this geohazard survey line	U	number
SURVEY LINES	surveylines.shp	line_id	line # on map - assigned by the geohazard survey contractor	U	number
SURVEY LINES	surveylines.shp	src_fk	foreign key to envm_src table	U	number
SURVEY LINES	interp_seismic_images	int_seis_image_id	primary key of table	U	number
SURVEY LINES	interp_seismic_images	int_seis_image_fk	foreign key of table	U	number
SURVEY LINES	interp_seismic_images	name_of_seismic_profile	name of scan	U	text
SURVEY LINES	interp_seismic_images	filename_path	filename and path of scan	U	text
SURVEY LINES	interp_seismic_images	comments	comments	U	text
SURVEY LINES	interp_seismic_images	seismic_line_type	seismic scan code	U	number
SURVEY LINES	seismic_line_types	seismic_line_type	seismic scan type code	U	number
SURVEY LINES	seismic_line_types	seismic_line_typ_desc	seismic scan type desc	U	text
VARIOUS	Confidence_Level_codes	conf_level_code	code describing the confidence level of the arc	U	number
VARIOUS	Confidence_Level_codes	conf_level	text describing the confidence level of the arc	U	text
VARIOUS	Meas_Codes	meas_code_desc	measurement type	U	text
VARIOUS	Meas_Codes	meas_code	unique code (D or T)	U	text
VARIOUS	Stratigraphy_Codes	strat_desc	stratigraphic classification	U	text
VARIOUS	Stratigraphy_Codes	strat_code	unique identifier for the stratigraphic unit	U	number
VARIOUS	Vert_Datum_codes	vert_datum	text describing the vertical datum	U	text
VARIOUS	Vert_Datum_codes	vert_datum_code	numerical index of datum reference	U	number
AREAS	areas.shp	sde_shp	unique id of polygon	U	number
AREAS	areas.shp	areas_id	link to lut table	U	number
AREAS	areas.shp	area	name of area	U	text
AREAS	areas.shp	src_fk	foreign key to envm_src table	U	number
AREAS	areas_lut	env_src_pk	primary key of table	U	number
AREAS	areas_lut	env_src_fk	foreign key of table	U	number
AREAS	areas_lut	envm_src_t	envm source title	U	text
AREAS	areas_lut	areas	area name	U	text
AREAS	areas_lut	areas_id	link to area.shp	U	number

Relationships

Relation ID	Theme	Fields defining join	One to many	Description
BA1	Bathymetry	Bathy_contour.shp.class_fk = Bathy_Class.sn_bathy_class	One to many Bathy_contour.shp feature record requires one Bathy_Class record	The bathymetry contour arc record description is defined by the record in the bathymetry class table.
BA2	Bathymetry	BATHY_CONTOUR.sde.shp = ENVM_SOURCES.sn_envm_src_pk	A BATHY_CONTOUR.shp feature record must have at least one reference to ENVM_SOURCES	Each record of the BATHY_CONTOUR feature table must be referenced to its layer and source through one record in the ENVM_SOURCES table.
BA3	Bathymetry	Bathy_Spot_Elev.shp.class_fk = Bathy_Spot_Class.bathy_spot_class	One to many Bathy_Spot_Elev.shp feature record requires one Bathy_Class record	The bathymetry Spot elevation point record description is defined by the record in the bathymetry spot class table.
BA4	Bathymetry	BATHY_Spot_elev.shp.src_fk = ENVM_SOURCES.sn_envm_src_pk	A Spot_elev.shp feature record must have one reference to ENVM_SOURCES	Each record of the BATHY_Spot_elev feature table must be referenced to its layer and source through one record in the ENVM_SOURCES table.
BA8	Bathymetry	REGIONAL_BATHY.sde.shp = ENVM_SOURCES.sn_envm_src_pk	A REGIONAL_BATHY.shp feature record must have one or more reference to ENVM_SOURCES	Each record of the REGIONAL_BATHY feature table must be referenced to its layer and source through one record in the ENVM_SOURCES table.
B1	Borings	ENVM_SOURCES.sn_envm_src_pk = Boring_locations.shp.src_fk	One or many ENVM_SOURCES records involve only one Boring Locations.shp record	This links the boring locations feature table to higher level source and layer tables.
B10	Borings	lab_tests.sn_lab_test = Pct_Finer.sn_lab_tests_fk	One lab tests record may require one to many Pct_Finer record	The lab test may include one or more percentages of core with a specific finer value.
B19	Borings	core_samples.sn_core_samples = lab_tests.sn_core_samples_fk	One core_samples record may require one to many lab_tests record	The core samples may include one or more tests.
B2	Borings	Boring_Locations.shp.sde.shp = Penetration_BCounts.sde.shp_fk	One or many Penetration_BCounts records involve only one Boring Locations.shp record	The boring Locations feature may contain one or more Penetration Blow count measurements.
B3	Borings	Boring_Locations.shp.sde.shp = core_samples.sde.shp_fk	One or many core_sample records involve only one Boring Locations.shp record	The boring Locations feature may contain one or more core samples.
B4	Borings	Banded_Soils.sde.shp_fk = Boring_locations.shp.sde.shp	One or many Banded_Soil records involve only one Boring Locations.shp record	The boring location feature may contain one or more unit of banded soils.
B5	Borings	Boring_Locations.shp.sde.shp = Soil_Gas.sde.shp_fk	One or many soil_gas records involve only one Boring Locations.shp record	The boring location feature may contain one or more soil gas observation description.
B6	Borings	Boring_Locations.shp.sde.shp = Ground_temp.sde.shp_fk	One or many ground_temp records involve only one Boring Locations.shp record	The boring location feature may contain one or more temperature reading measurement.
B7	Borings	Boring_Locations.shp.sde.shp = coring_lithology.sde.shp_fk	One or many coring_lithology records involve only one Boring Locations.shp record	The boring location feature may contain one or more lithologic unit.
B8	Borings	Boring_Locations.shp.sde.shp = core_cryology.sde.shp_fk	One or many core_cryology records involve only one Boring Locations.shp record	The boring location feature may contain one or more cryologic unit.
B9	Borings	lab_tests.sn_lab_test = Interpretive_lab_test.sn_lab_tests_fk	One lab tests record may require one to many interpretive_lab_tests record	The lab Test may be defined by one or more types of interpretive lab tests.
CR17	CORIS ADDITION	ENVM_SOURCES.sn_ENVM_SRC_PK=ENVM_SOURCES.sn_ENVM_SRC_FK	One ENVM_SOURCES record requires one to many ENVM_SOURCES records	Each reference of a ENVM_SOURCES or geohazard survey record, must be linked to at least one envm source.
EQ1	Earthquakes	Earthquake.shp.src_fk = ENVM_SOURCES.sn_envm_src_pk	An Earthquake feature record must have one reference to ENVM_SOURCES	Each record of the Earthquake feature table must be referenced to its layer and source through one record in the ENVM_SOURCES table.
I1	Ice	Ice_Gouge.shp.src_fk = ENVM_SOURCES.sn_envm_src_pk	A Ice_Gouge feature record must have one reference to ENVM_SOURCES	Each record of the Ice_Gouge feature table must be referenced to its layer and source through one record in the ENVM_SOURCES table.
I2	Ice	Strudel_Scour_Boundary.shp.src_fk = ENVM_SOURCES.sn_envm_src_pk	A Strudel_Scour_Boundary feature record must have one reference to ENVM_SOURCES	Each record of the Strudel_Scour_Boundary feature table must be referenced to its layer and source through one record in the ENVM_SOURCES table.
I3	Ice	Lines_of_ice_Gouges.shp.src_fk = ENVM_SOURCES.sn_envm_src_pk	A Lines_of_ice_Gouges feature record must have one reference to ENVM_SOURCES	Each record of the Lines_of_ice_Gouges feature table must be referenced to its layer and source through one record in the ENVM_SOURCES table.
I4	Ice	Permafrost.shp.src_fk = ENVM_SOURCES.sn_envm_src_pk	A Permafrost feature record must have one reference to ENVM_SOURCES	Each record of the Permafrost feature table must be referenced to its layer and source through one record in the ENVM_SOURCES table.
I5	Ice	Drain Cracks.shp.src_fk = ENVM_SOURCES.sn_envm_src_pk	A drain Cracks feature record must have one reference to ENVM_SOURCES	Each record of the Drain Cracks feature table must be referenced to its layer and source through one record in the ENVM_SOURCES table.
I6	Ice	Overflood_Limits.shp.Type_id = Overflood_type.Overflood_Type_ID	One or many overflood limits record may be described by an overflood type.	One or many of the overflood limits may be defined by an overflood type record.
I7	Ice	Drain Crack Pt.shp.src_fk=ENVM_SOURCES.sn_envm_src_pk	A drain Cracks point feature record must have one reference to ENVM_SOURCES	Each record of the Drain Crack feature table must be referenced to its layer and source through one record in the ENVM_SOURCES table.
I8	Ice	Drain_Cracks.shp.type_id = drain_crack_type.drain_crack_type_id	One or many drainage crack record may be described by a drain crack type.	One or many of the drain crack may be defined by a drain crack type record.
I9	Ice	Drain_Crack_Pt.shp.type_id = drain_crack_type.drain_crack_type_id	One or many drainage crack point record may be described by a drain crack type.	One or many of the drain crack point records may be defined by a drain crack type record.
I10	Ice	Overflood_limits.shp.type_id = Overflood_type.Overflood_type_id	One or many Overflood_limits arc record may be described by an Overflood_limits type.	One or many of the Overflood_limits arc records may be defined by an Overflood_limits type record.
IS1	Isopach	Isopach_Arcs.shp.src_fk=ENVM_SOURCES.sn_envm_src_pk	A Isopach_Arcs feature record must have one reference to ENVM_SOURCES	Each record of the Isopach_Arcs feature table must be referenced to its layer and source through one record in the ENVM_SOURCES table.
IS2	Isopach	ISOPACH_arcs.shp.iso_horiz = Isopach_Class.sn_isopach_class	One or many Isopach_Arcs.shp records involve only one Isipach_Class record.	One or more Isopach arc records is categorized by an Isopach class record.
M11	Magnetic Intensity	Magnetic_Intensity.shp.src_fk = ENVM_SOURCES.sn_envm_src_pk	A Magnetic_Intensity.shp feature record must have one reference to ENVM_SOURCES	Each record of the Magnetic_Intensity feature table must be referenced to its layer and source through one record in the ENVM_SOURCES table.
M1	Miscellaneous	Interpreted Section_Location.shp.src_fk = ENVM_SOURCES.sn_envm_src_pk	A Interpreted Section_Location.shp feature record must have one reference to ENVM_SOURCES	Each record of the Interpreted Section_Location feature table must be referenced to its layer and source through one record in the ENVM_SOURCES table.
M2	Miscellaneous	Seafloor_Visual_Obs.shp.src_fk = ENVM_SOURCES.sn_envm_src_pk	A Seafloor_Visual_Obs.shp feature record must have one reference to ENVM_SOURCES	Each record of the Seafloor_Visual_Obs feature table must be referenced to its layer and source through one record in the ENVM_SOURCES table.
M3	Miscellaneous	Seafloor_Vis_PT_Obs.shp.src_fk = ENVM_SOURCES.sn_envm_src_pk	A Seafloor_Vis_PT_Obs.shp feature record must have one reference to ENVM_SOURCES	Each record of the Seafloor_Vis_PT_Obs feature table must be referenced to its layer and source through one record in the ENVM_SOURCES table.
M4	Miscellaneous	Archaeological.shp.src_fk = ENVM_SOURCES.sn_envm_src_pk	A Archaeological.shp feature record must have one reference to ENVM_SOURCES	Each record of the Archaeological feature table must be referenced to its layer and source through one record in the ENVM_SOURCES table.
M5	Miscellaneous	Unidentified_Sonar_Targets.shp.src_fk = ENVM_SOURCES.sn_envm_src_pk	A Unidentified_Sonar_Targets.shp feature record must have one reference to ENVM_SOURCES	Each record of the Unidentified_Sonar_Targets feature table must be referenced to its layer and source through one record in the ENVM_SOURCES table.
M6	Miscellaneous	Erosional_Cutouts.shp.src_fk = ENVM_SOURCES.sn_envm_src_pk	A Erosional_Cutouts.shp feature record must have one reference to ENVM_SOURCES	Each record of the Erosional_Cutouts feature table must be referenced to its layer and source through one record in the ENVM_SOURCES table.

Relation ID	Theme	Fields defining join	One to many	Description
SF1	Sea Floor	Stratigraphy.shp_src_fk=ENVM_SOURCES.sn_envm_src_pk	A Stratigraphy.shp feature record must have one reference to ENVM_SOURCES	Each record of the Stratigraphy feature table must be referenced to its layer and source through one record in the ENVM_SOURCES.
SF2	Sea Floor	Possible_paleo_shoreline.shp_src_fk=ENVM_SOURCES.sn_envm_src_pk	A Possible_paleo_shoreline.shp feature record must have one reference to ENVM_SOURCES	Each record of the Possible_paleo_shoreline feature table must be referenced to its layer and source through one record in the ENVM_SOURCES.
SF3	Sea Floor	Unst_Seafloor_Sediments.shp_src_fk=ENVM_SOURCES.sn_envm_src_pk	A Unst_Seafloor_Sediments.shp feature record must have one reference to ENVM_SOURCES	Each record of the Unst_Seafloor_Sediments feature table must be referenced to its layer and source through one record in the ENVM_SOURCES.
SF4	Sea Floor	Boulder_Patch.shp_src_fk=ENVM_SOURCES.sn_envm_src_pk	A Boulder_Patch.shp feature record must have one reference to ENVM_SOURCES	Each record of the Boulder_Patch feature table must be referenced to its layer and source through one record in the ENVM_SOURCES.
SF5	Sea Floor	Seafloor_Features.shp_src_fk=ENVM_SOURCES.sn_envm_src_pk	A Seafloor_Features.shp feature record must have one reference to ENVM_SOURCES	Each record of the Seafloor_Features feature table must be referenced to its layer and source through one record in the ENVM_SOURCES.
SF6	Sea Floor	Crest.shp_src_fk=ENVM_SOURCES.sn_envm_src_pk	A Crest.shp feature record must have one reference to ENVM_SOURCES	Each record of the Crest feature table must be referenced to its layer and source through one record in the ENVM_SOURCES.
SI1	Sea Ice	Sea_Ice.shp_src_fk=ENVM_SOURCES.sn_envm_src_pk	A Sea_Ice feature record must have one reference to ENVM_SOURCES	Each record of the Sea_Ice feature table must be referenced to its layer and source through one record in the ENVM_SOURCES table.
SI2	Sea Ice	Sea_Ice.shp.sea_ice_con_idSea_Ice_Concentration_Codes.sea_ice_con_id	One or many Sea_Ice.shp records involve only one Sea_Ice Concentration codes record.	One or many records of the Sea_Ice arc feature may include a sea ice concentration code.
SI3	Sea Ice	Sea_Ice.shp.sea_ice_form_idSea_Ice_Form_Codes.sea_ice_form_id	One or many Sea_Ice.shp records involve only one Sea_Ice formation codes record.	One or many records of the Sea_Ice arc feature may include a sea ice formation code.
SI4	Sea Ice	Sea_Ice.shp.sea_ice_thick_idSea_Ice_Thickness_Codes.sea_ice_thick_id	One or many Sea_Ice.shp records involve only one Sea_Ice thickness codes record.	One or many records of the Sea_Ice arc feature may include a sea ice thickness code.
SA3	SEISMIC ANOMALIES	SEISMIC_ANOMALY_AREA.shp.CLASS_FK=SEISMIC_AREA_CLASS.SN_SEISMIC_CLASSES	One or more seismic anomaly area feature records must be defined by a seismic_area class record.	The seismic anomaly area record is included in a seismic class category.
SA4	SEISMIC ANOMALIES	ENVM_SOURCES.sn_envm_src_pk=SEISMIC_ANOMALY_AREA.shp_src_fk	A Seismic Anomaly Area.shp feature record must have one reference to ENVM_SOURCES	Each record of the Seismic Anomaly Area.shp must be referenced to its layer and source through one record in the ENVM_SOURCES.
SA5	SEISMIC ANOMALIES	Seismic_Anomaly_Area.shp.sde_shp_fk=Seismic_Anomaly_Anno.shp.sde_shp_fk	One or many Seismic Anomaly Annotation records involve only one seismic_Anomaly_Area record.	The Seismic Anomaly annotation points, if present, describe a single Seismic Anomaly polygon.
SW1	Shipwrecks	Shipwrecks.shp_src_fk=ENVM_SOURCES.sn_envm_src_pk	An shipwreck point feature record must have one reference to ENVM_SOURCES	Each record of the shipwreck feature table must be referenced to its layer and source through one record in the ENVM_SOURCES table.
S1	Structure	StructureContours.shp_src_fk=ENVM_SOURCES.sn_envm_src_pk	A Structure Contours.shp feature record must have one reference to ENVM_SOURCES	Each record of the Structure Contours feature table must be referenced to its layer and source through one record in the ENVM_SOURCES table.
S11	Structure	Fault_Plane_Boundary.shp_src_fk=Fault_Plane_Str_Cntr.sde_shp_fk	One or many Fault Plane Str Cntr arc records involve only one Fault Plane Boundary polygon record.	The features of the Fault Plane Boundary coverage can be described by the values of the Fault Plane Str Contour table The Fault Boundary annotation points, if present, describe a
S12	Structure	Fault_Annotation.shp.sde_shp_fk=Fault_Plane_Boundary.shp.sde_shp	One or many Fault Bndy Annotation records involve only one FaultBoundary polygon feature record.	single Fault Boundary polygon.
S13	Structure	Structural_Axis.shp_src_fk=ENVM_SOURCES.sn_envm_src_pk	A Structural_Axis.shp feature record must have one reference to ENVM_SOURCES	Each record of the Structural_Axis feature table must be referenced to its layer and source through one record in the ENVM_SOURCES table.
S14	Structure	Fault_Zones.shp_src_fk=ENVM_SOURCES.sn_envm_src_pk	A Fault_Zones.shp feature record must have one reference to ENVM_SOURCES	Each record of the Fault_Zones feature table must be referenced to its layer and source through one record in the ENVM_SOURCES table.
S15	Structure	Dip_Points.shp_src_fk=ENVM_SOURCES.sn_envm_src_pk	A Dip_Points.shp feature record must have one reference to ENVM_SOURCES	Each record of the Dip_Points feature table must be referenced to its layer and source through one record in the ENVM_SOURCES table.
S16	Structure	Structural_Axis_Annotation.shp.sde_shp_fk=Structural_Axis.shp.sde_shp	One or many Structural_Axis Annotation records involve only one Structural_Axis arc feature record.	The Structural_Axis annotation points, if present, describe a singleStructural_Axis arc.
S17	Structure	Fault_Zones.shp.class_id=Fault_Zones_Class.sn_fit_zone_class	One or many fault zone polygon records involve only one class record.	The features of the Fault zone polygon coverage can be described by the values of the fault zone Class.
S19	Structure	Buried_Channel.shp_src_fk=ENVM_SOURCES.sn_envm_src_pk	A Buried_Channel.shp feature record must have one reference to ENVM_SOURCES	Each record of the Buried_Channel feature table must be referenced to its layer and source through one record in the ENVM_SOURCES table.
S2	Structure	StructureSpots.shp_src_fk=ENVM_SOURCES.sn_envm_src_pk	A Structure Spots.shp feature record must have one reference to ENVM_SOURCES	Each record of the Structure Spots feature table must be referenced to its layer and source through one record in the ENVM_SOURCES table.
S21	Structure	Paleo_Structure.shp.sde_shp=ENVM_SOURCES.sn_envm_src_pk	A Paleo_Structure.shp feature record must have one reference to ENVM_SOURCES	Each record of the Paleo_Structure feature table must be referenced to its layer and source through one record in the ENVM_SOURCES table.
S22	Structure	Buried_Channel_Annotation.shp.sde_shp_fk=Buried_Channel.shp.sde_shp	One or many Buried_Channel Annotation records involve only one Buried_Channel polygon feature record.	The Buried_Channel annotation points, if present, describe a single Buried_Channel polygon.
S23	Structure	BuriedChannel_Boundaries.shp.sde_shp_fk=Buried_Channel.shp.sde_shp	One or many Buried_Channel Boundaries arc records involve one or more Buried_Channel polygon feature record.	The Buried_Channel arcs, if present, describe a single Buried_Channel polygon.
S3	Structure	Fault_Lines.shp_src_fk=ENVM_SOURCES.sn_envm_src_pk	A Fault_Lines.shp feature record must have one reference to ENVM_SOURCES	Each record of the Fault_Lines feature table must be referenced to its layer and source through one record in the ENVM_SOURCES table.
S37	Structure	Fault_Zone_Arcs.sde_shp_fk=Fault_Zones.shp.sde_shp	One or more fault zone arcs may involve only one fault zones polygon record	One or more fault zone arcs may involve only one fault zones polygon record
S4	Structure	Fault_Plane_Boundary.shp_src_fk=ENVM_SOURCES.sn_envm_src_pk	A Fault_Plane_Boundary.shp feature record must have one reference to ENVM_SOURCES	Each record of the Fault_Plane_Boundary feature table must be referenced to its layer and source through one record in the ENVM_SOURCES table.
S6	Structure	Fault_Lines.shp.class_fk=Fault_Lines_Class.sn_fault_lines_class	One or many Fault Lines arc records involve only one class record.	The features of the Fault Lines arc coverage can be described by the values of the Fault Lines Class.
S7	Structure	Fault_Lines.shp.sde_shp_fk=Fault_Annotation.shp.sde_shp_fk	One or many Fault Annotation records involve only one Fault Lines arc feature record.	The Fault Lines annotation points, if present, describe a single Fault Line arc.
S8	Structure	Fault_Plane_Boundary.shp.class_fk=Fault_Plane_Boundary_Class.sn_fit_plane	One or many Fault plane boundary polygon records involve only one class record.	The features of the Fault Plane Boundary coverage can be described by the values of the Fault Plane Boundary Class.
S9	Structure	Structure_Contours.shp.str_horiz=Structure_Class.sn_structure_class	One or many structure contour arc records involve only one class record.	The features of the Structure contour arc coverage can be described by the values of the Structure Class.
SL1	Survey Lines	Shot_Pt.shp_src_fk=ENVM_SOURCES.sn_envm_src_pk	A Shot Pt.shp feature record must have one reference to ENVM_SOURCES	Each record of the Shot Point.shp must be referenced to its layer and source through one record in the ENVM_SOURCES.
SL3	Survey Lines	Shot_Pt.shp.equip_id=Acquisition_Equip.Equip_id	One or many Shot Pt.shp records involve only one equipment record.	The features of the Shot Pt.shp can be described by the values of the Acquisition_Equip.
SL4	Survey Lines	Surveylines.shp_src_fk=ENVM_SOURCES.sn_envm_src_pk	A Surveylines.shp feature record must have one reference to ENVM_SOURCES	Each record of the SurveyLines.shp must be referenced to its layer and source through one record in the ENVM_SOURCES.
SL5	Survey Lines	Surveylines.shp.sde_shp=INTERPRETATIVE_LAB_TST.int_seis_image_FK	One or many INTERPRETATIVE_LAB_TST records involve only one Surveylines.shp record	The survey line feature may contain one or more INTERPRETATIVE_LAB_TST records.
AR1	Areas	Areas.shp_src_fk=ENVM_SOURCES.sn_envm_src_pk	A areas.shp feature record must have one reference to ENVM_SOURCES	Each record of the areas.shp must be referenced to its layer and source through one record in the ENVM_SOURCES.
AR2	Areas	areas.area_id=AREAS_LUT.AREA_ID	A areas.shp feature record must have one reference to AREAS_LUT	Each record of the areas.shp must be referenced to one or many area_lut records.

Domains

Table	ID Field	Desc Field	Relationship Ids
ACQUISITION_EQUIP	equip_id	equip_desc	SL2
AXIS_CODE	axis_code	axis_desc	S33
BANDED_SOIL_CODES	banded_soil_code	banded_soil_desc	B12
BPATCH_CODES	bpatch_code	bpatch_desc	SF11
CHAN_CODES	chan_code	chan_desc	S43
CONF_LEVEL_CODES	conv_level_code	conf_level	BA7,S24,S29, S38,S42, IS3, MI2,I13
CORING_METHOD_CODES	coring_method_code	coring_method_desc	B11,
CREST_CODES	crest_code	crest_desc	SF13
CRYOLOGIC_SYMBOL_CODES	cryologic_symbol_code	cryologic_symbol_desc	B15
DEPOSITIONAL_ENV_CODES	dep_env_code	dep_env	SF7
FAULT_DEPTH_CODES	fault_depth_code	fault_depth	S28, S35
FAULT_ZONES_TYPE	fault_zone_type_id	fault_zone_type	S36
ICE_GOUGE_ARC_CODES	ig_arc_code	ig_arc_desc	I11
ICE_GOUGE_AREA_CODES	ig_area_code	ig_area_desc	I12
INT_LAB_TST_TYPE	ing_lab_tst_type_id	int_lab_tst_type	B21
KELP_CODES	kelp_code	kelp_desc	M9,M10
LITHOLOGIC_UNIT_CODES	lithologic_unit_id	lith_unit_desc	B16
MEAS_CODES	meas_code	meas_code_desc	SA7,SA10,S25,S26,S30,S31, S34, IS6, S50
NAVIGATION_CODES	nav_code	nav_system_accuracy	SL2, B13
OVERFLOOD_TYPE	overflow_type_id	overflow_type	I7
PALEO_SHORELINE_CODES	paleo_shoreline_code	paleo_shoreline_desc	SF9
PALEO_STRUCT_TYPE	paleo_struct_type_id	paleo_struct_type	S41
PGAS_CODES	pgas_code	pgas_desc	SA9
PCT_FINER_CODES	pct_finer_code	pct_finer_value	B22
SAMPLE_CODES	sample_code	sample_desc	B20
SEA_ICE_CONCENTRATION_CODES	sea_ice_con_id	sea_ice_con_desc	SI2*
SEA_ICE_FORM_CODES	sea_ice_form_id	sea_ice_form_desc	SI3**
SEA_ICE_THICKNESS_CODES	sea_ice_thick_id	sea_ice_thick_desc	SI4
SEAFLOOR_CODES	seafloor_code	seafloor_desc	SF12
SEAVIS_CODES	seavis_code	seavis_desc	M8,M11
SEISMIC_SOURCE_CODES	seismic_source_code	seismic_source	SA8
SEISMIC_TYPE	seismic_type_id	seismic_type	SA1
SEISMIC_LINE_TYPES	seismic_line_type	seismic_line_type ID	SL6
STRATIGRAPHY_CODES	strat_code	strat_code_desc	SF8, S40, IS5,B17
UNST_SEA_TYPE	unst_sea_type_id	unst_sea_type	SF10
UST_TYPE	ust_type_id	ust_type	M7
VERT_DATUM_CODES	vert_datum_code	vert_datum	BA5,BA6,SA2,S10,S27,S32, IS4, B14
ENVM_SOURCES	sn_envm_source_pk	src_fk	CR11
* Linked by fields ct, cb, cc			
** Linkd by fields fa,fb,fc,fp,fs			
*** Lined by fields sa,sb,sc,s,so			