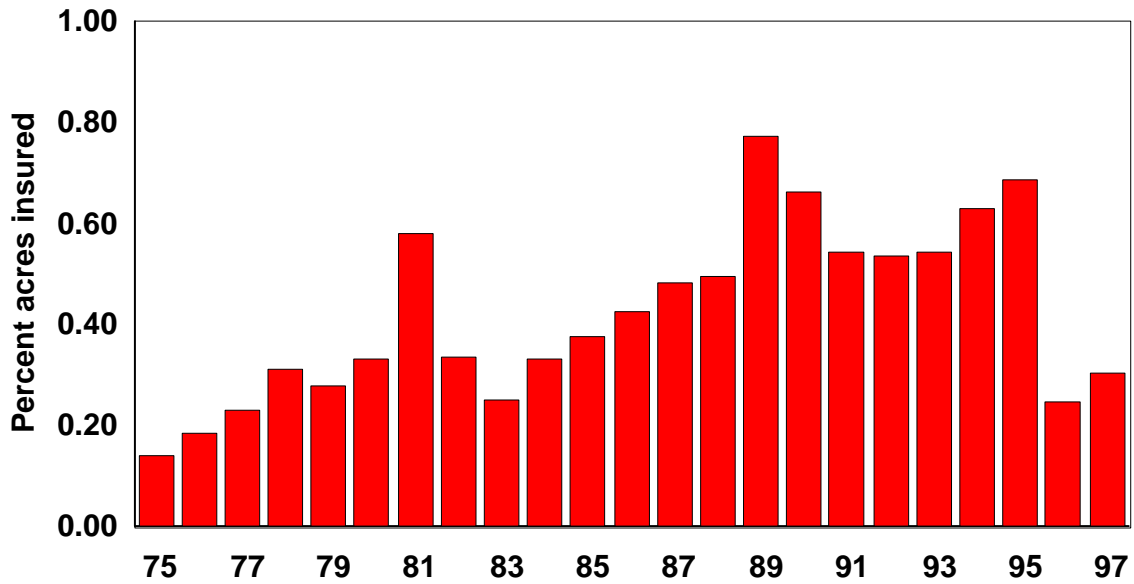
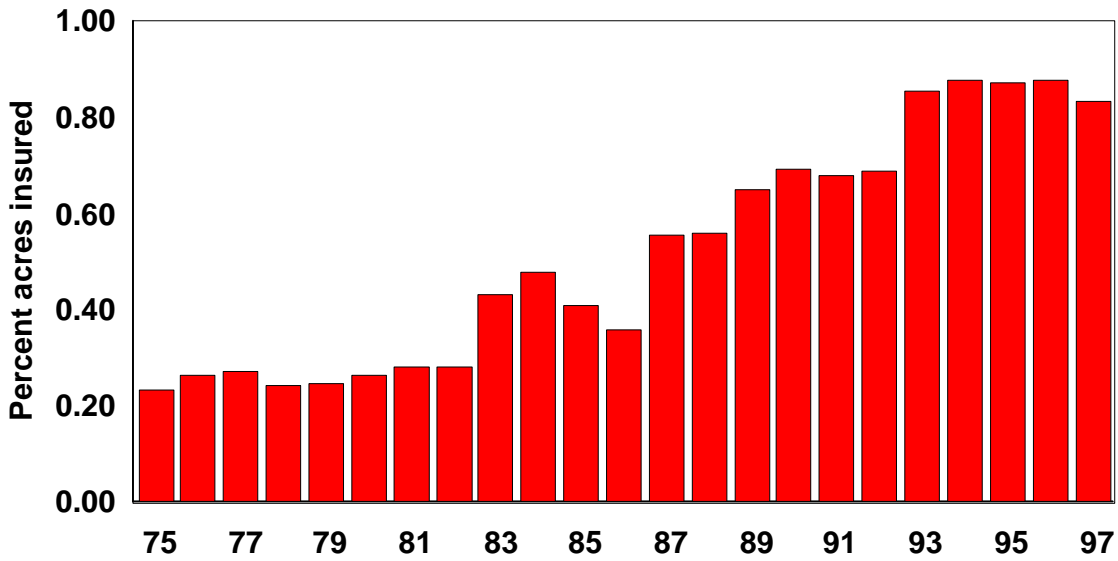


Chart 1A: Percent Acres Insured for Corn, Iowa County



Acreage of revenue products not included in 1996 or 1997

Chart 1B: Percent Acres Insured for Cotton, Texas County



Acreage of revenue products not included in 1996 or 1997

Chart 2A: Insurance Experience for Corn, Iowa County

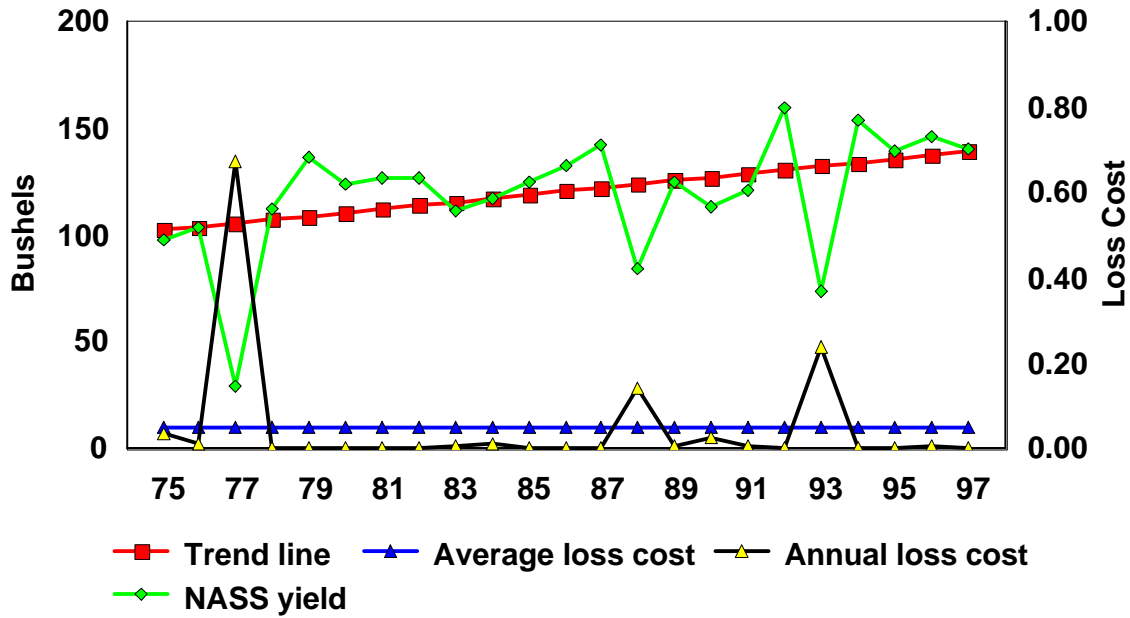


Chart 2B: Insurance Experience for Cotton, Texas County

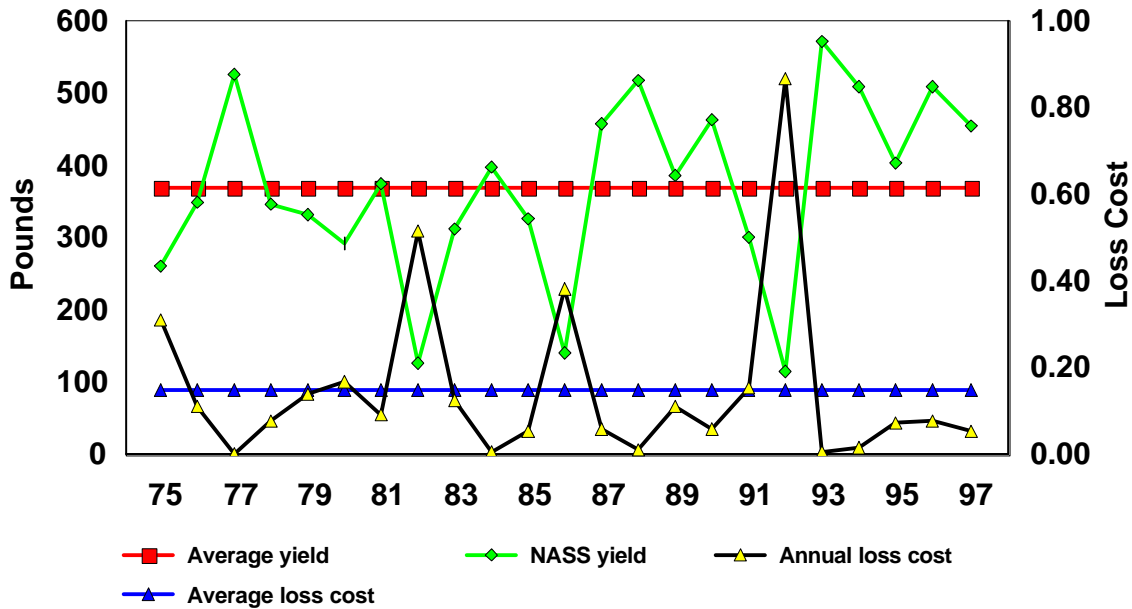


Chart 3A: Basic Data for Corn Rates, Iowa County

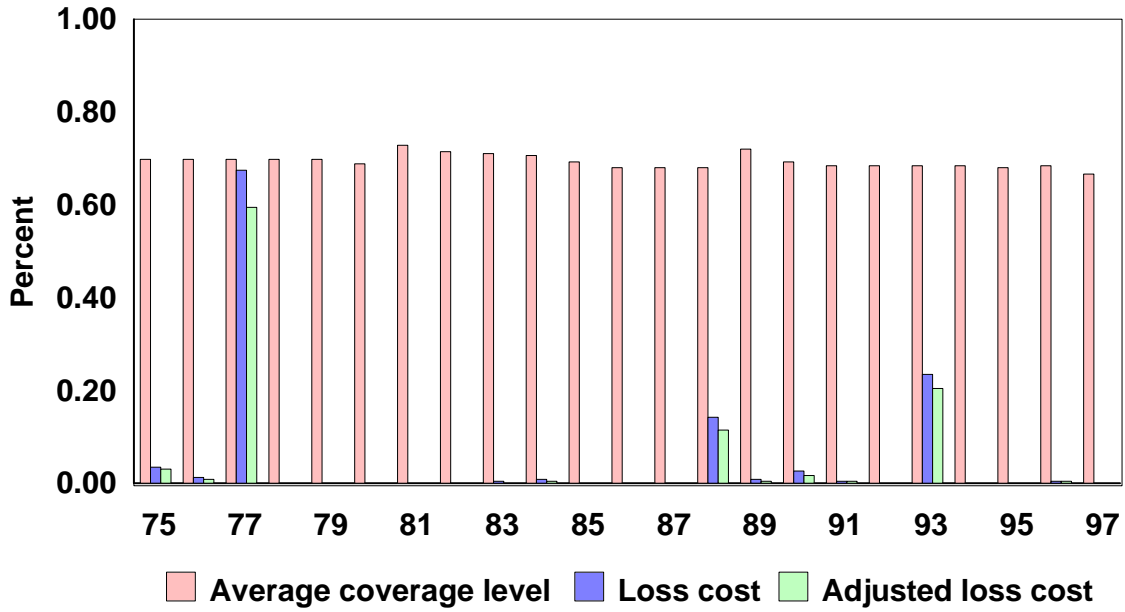


Chart 3B: Basic Data for Cotton Rates, Texas County

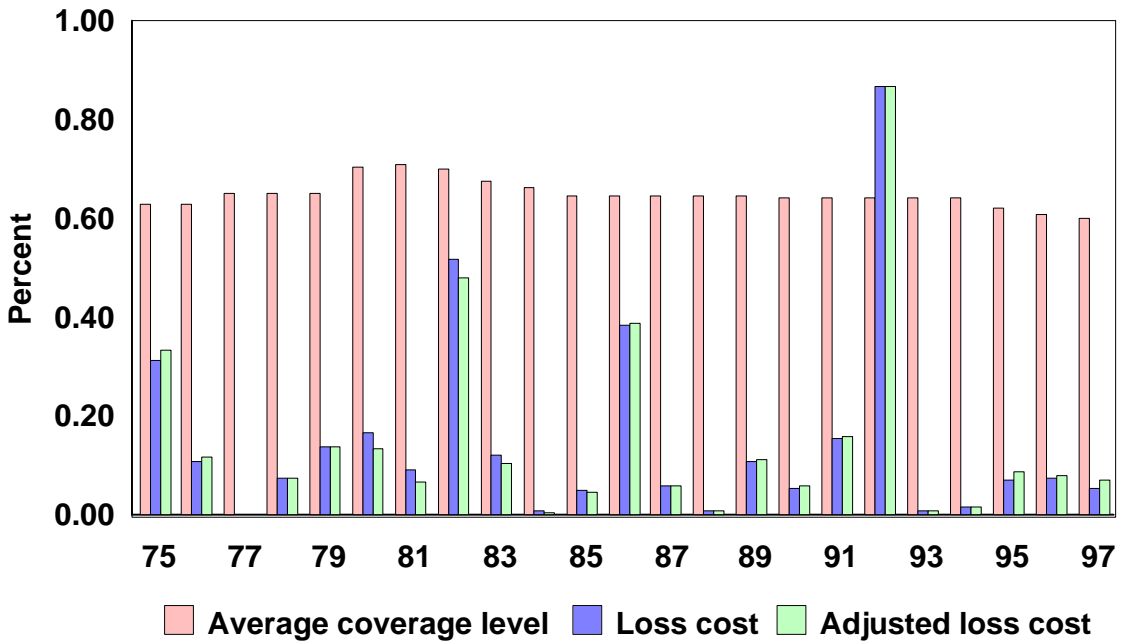


Chart 4A: Loss Cost Data for Corn, Iowa County

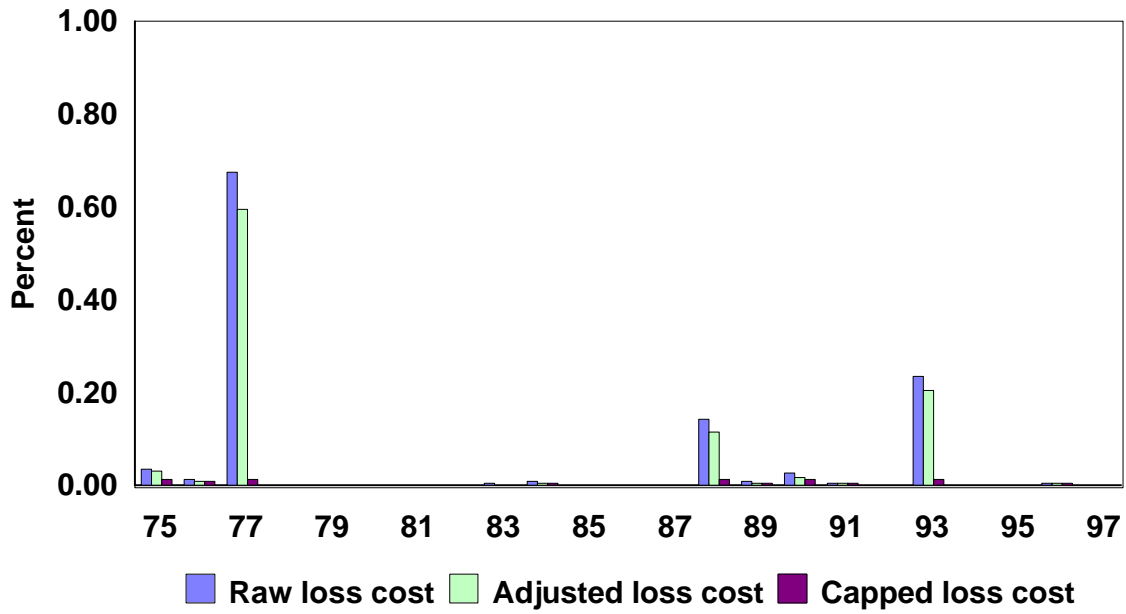
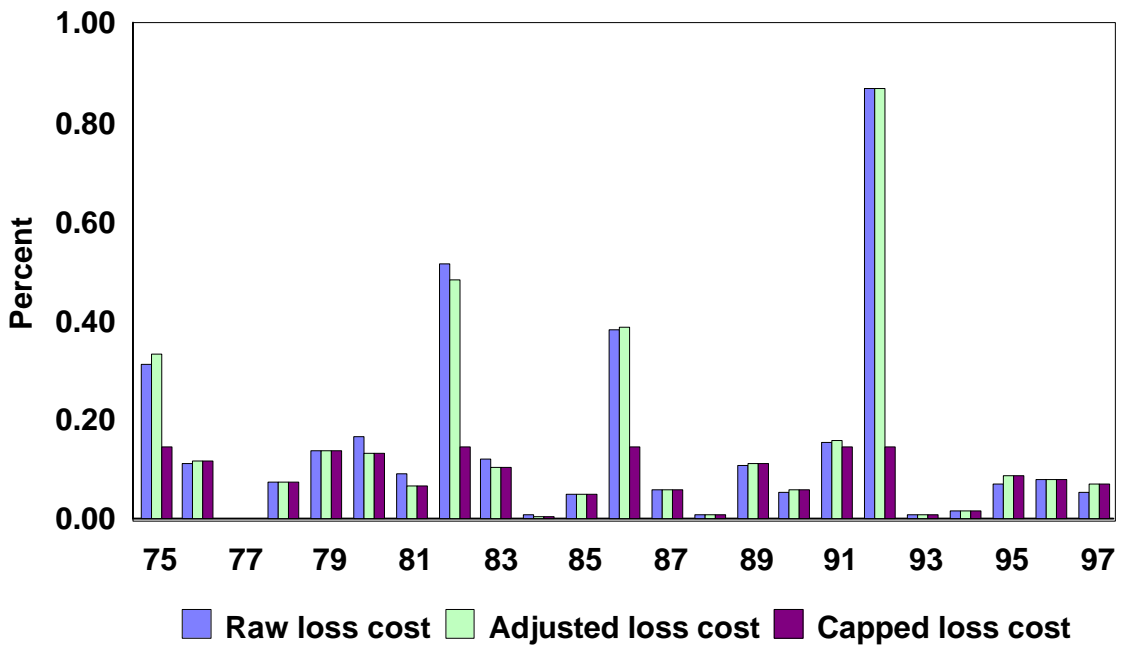


Chart 4B: Loss Cost Data for Cotton, Texas County



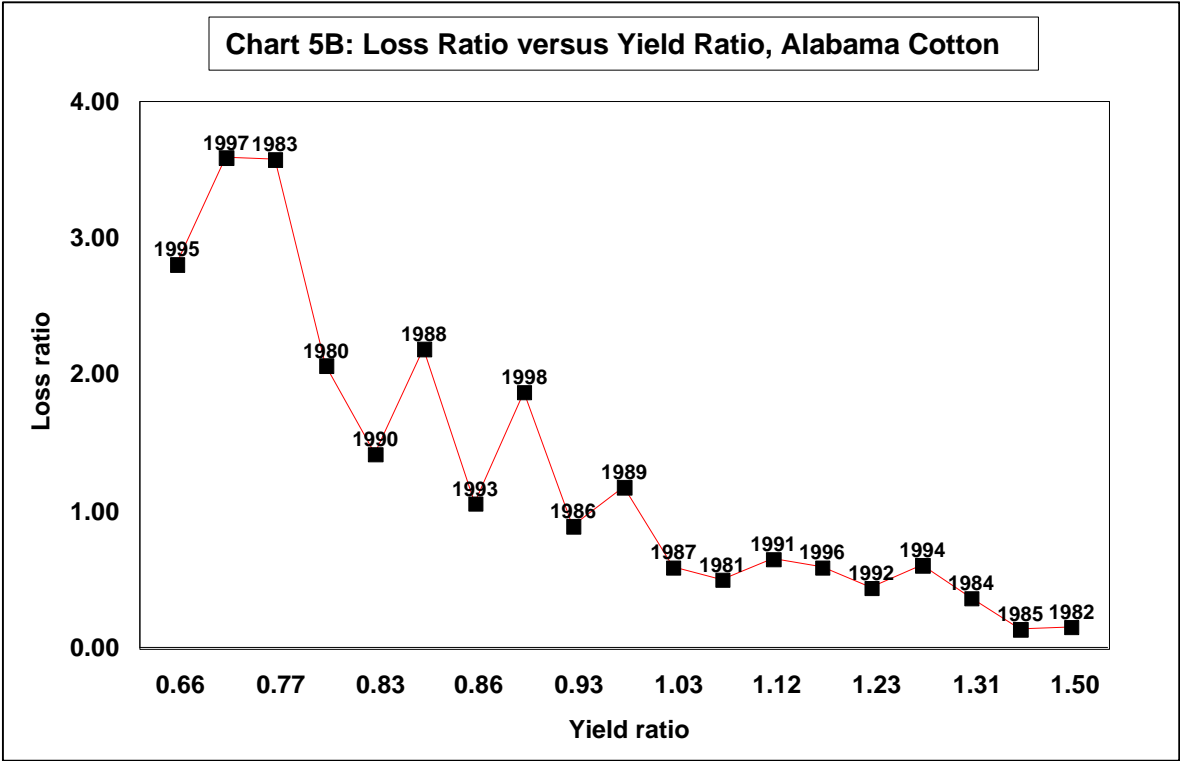
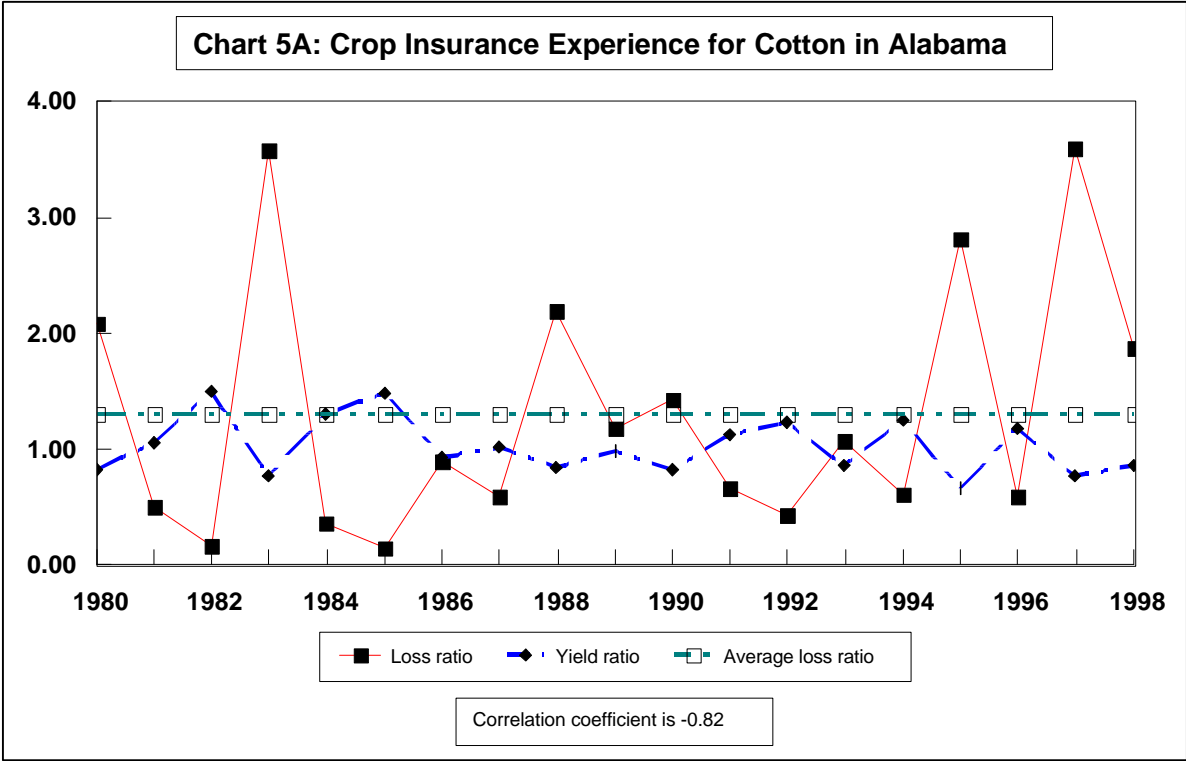
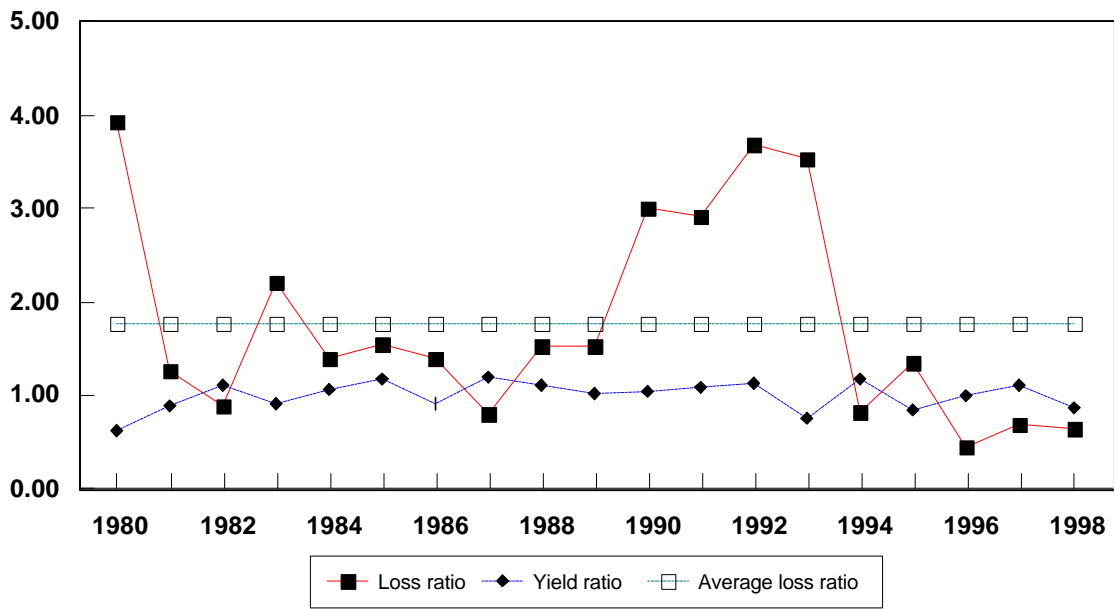
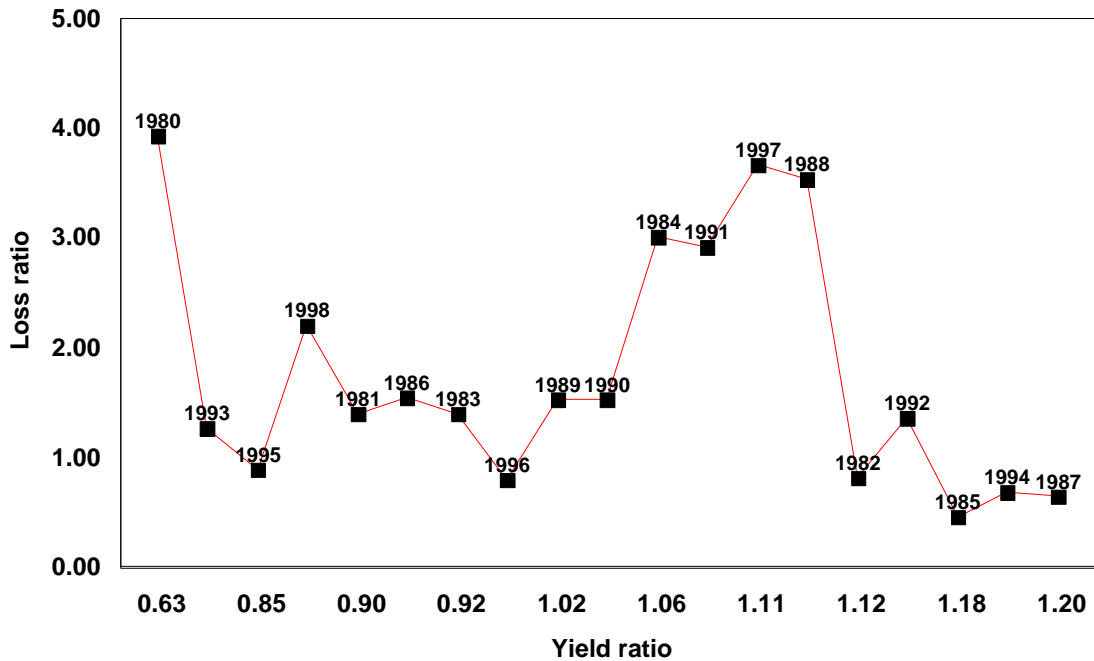


Chart 6A: Crop Insurance Experience for Cotton in Arkansas



Correlation coefficient is -0.40

Chart 6B: Loss Ratio versus Yield Ratio, Arkansas Cotton



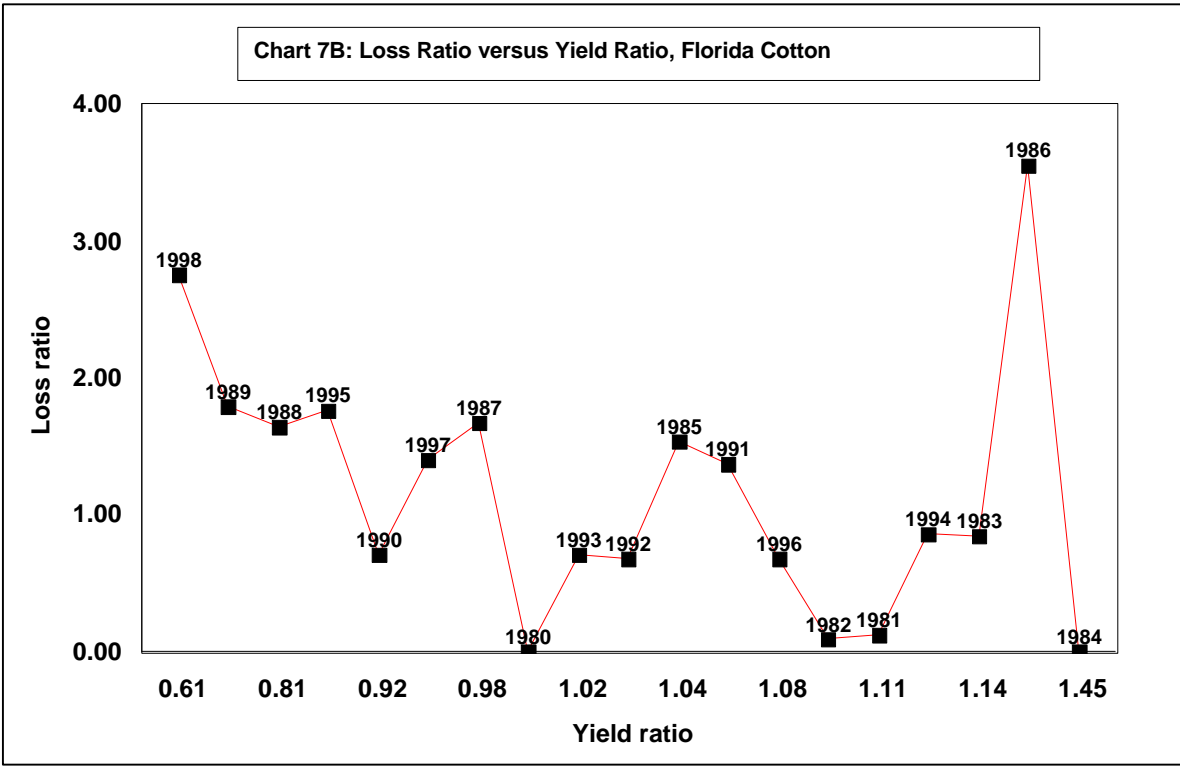
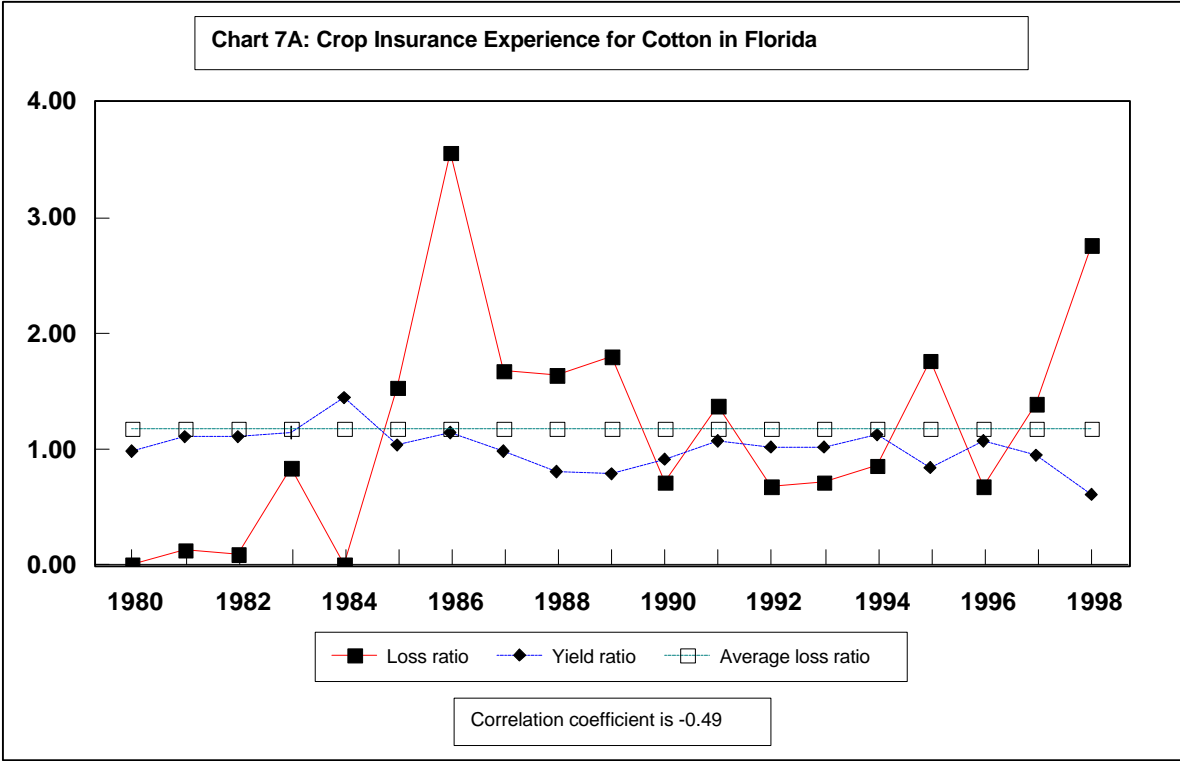
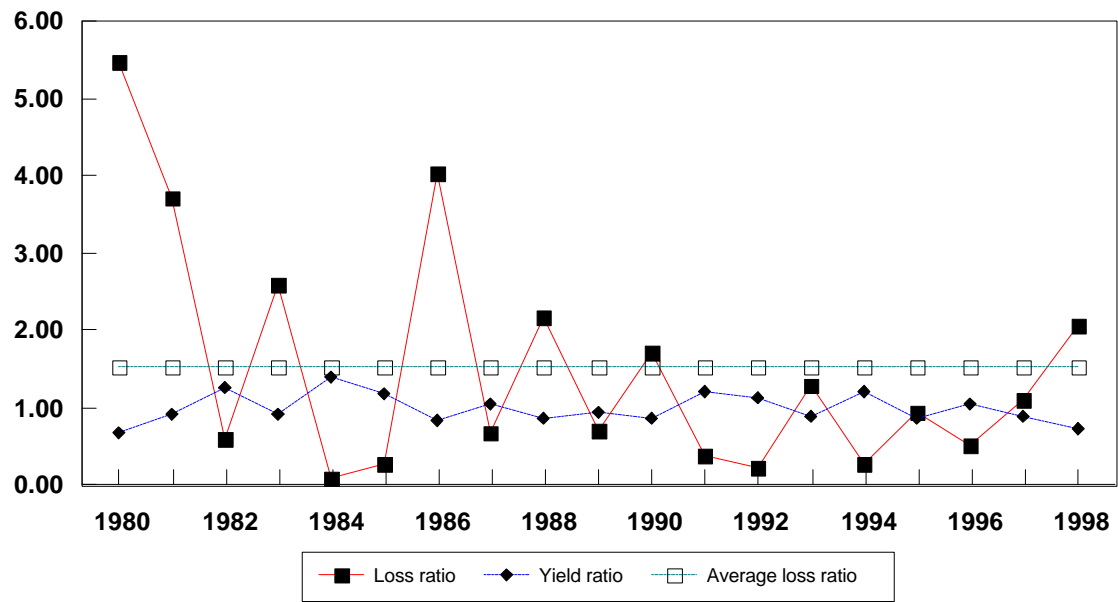
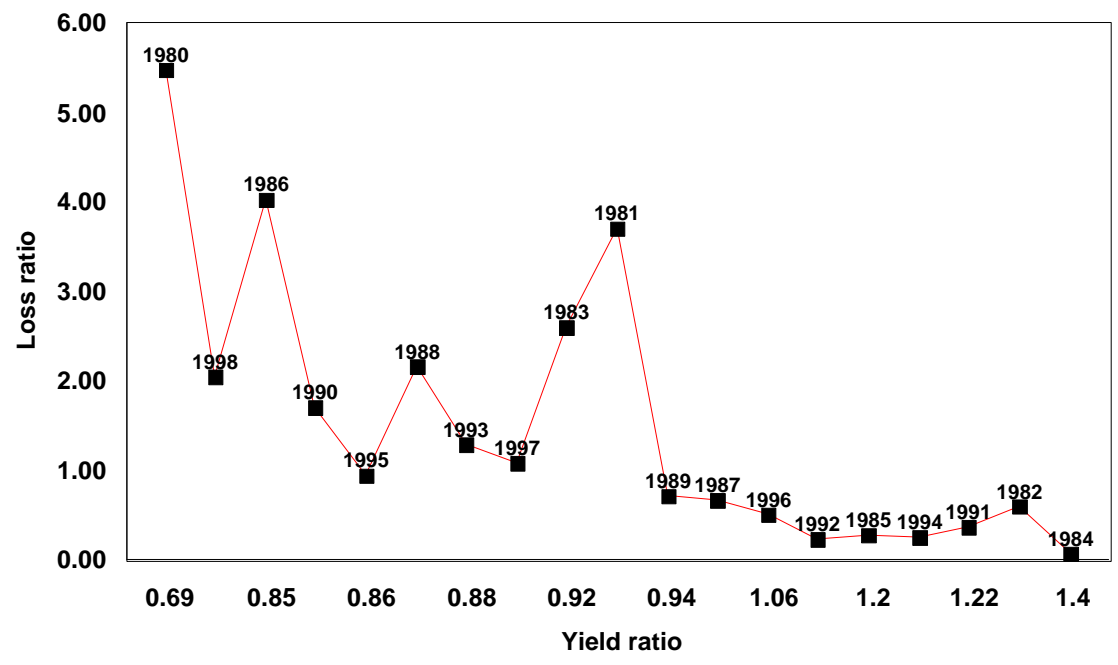


Chart 8A: Crop Insurance Experience for Cotton in Georgia



Correlation coefficient is -0.72

Table 8B: Loss Ratio versus Yield Ratio, Georgia Cotton



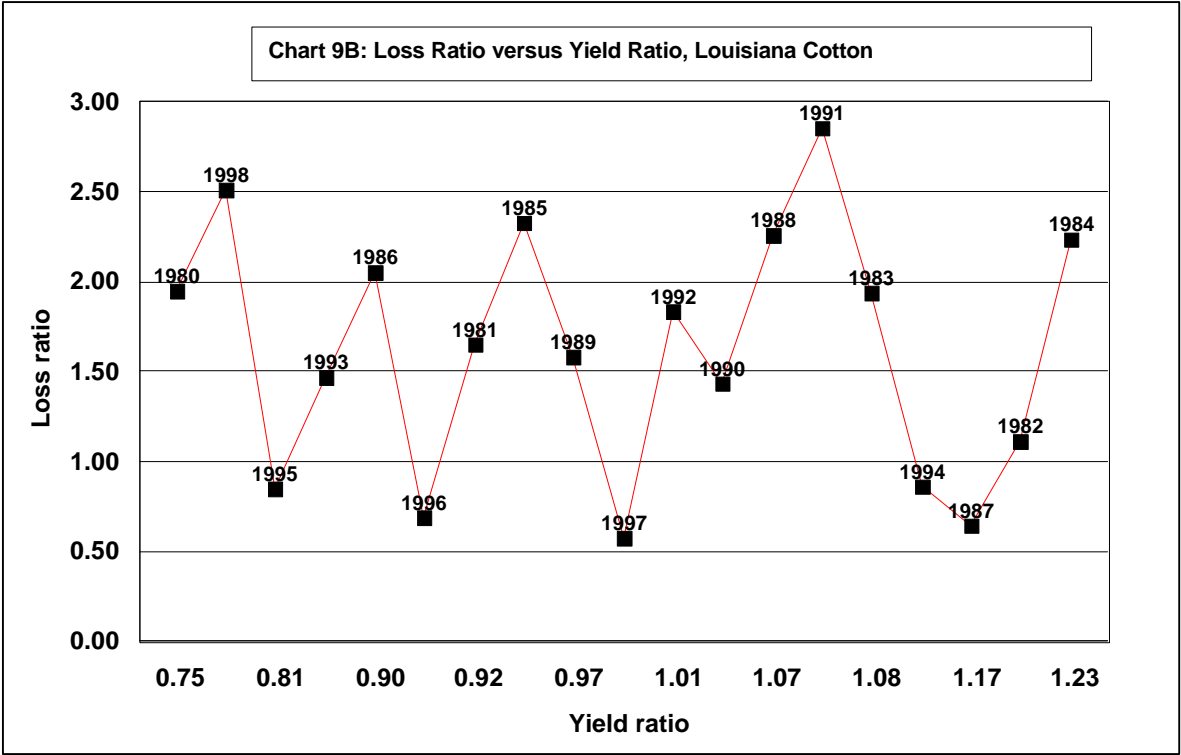
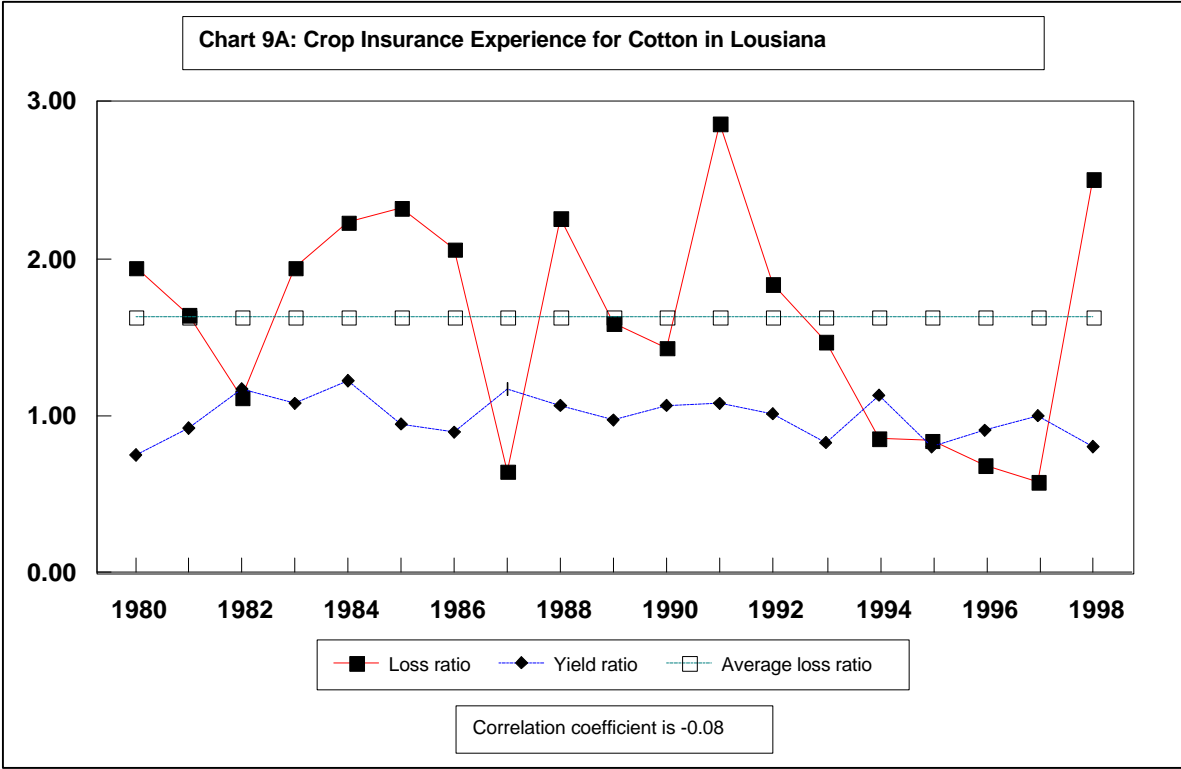
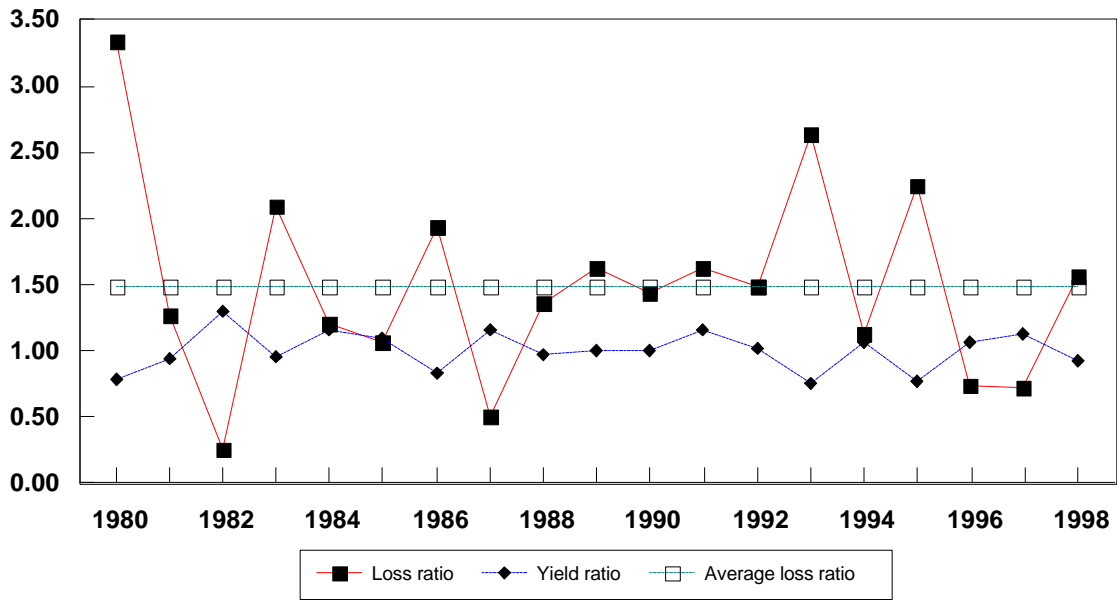
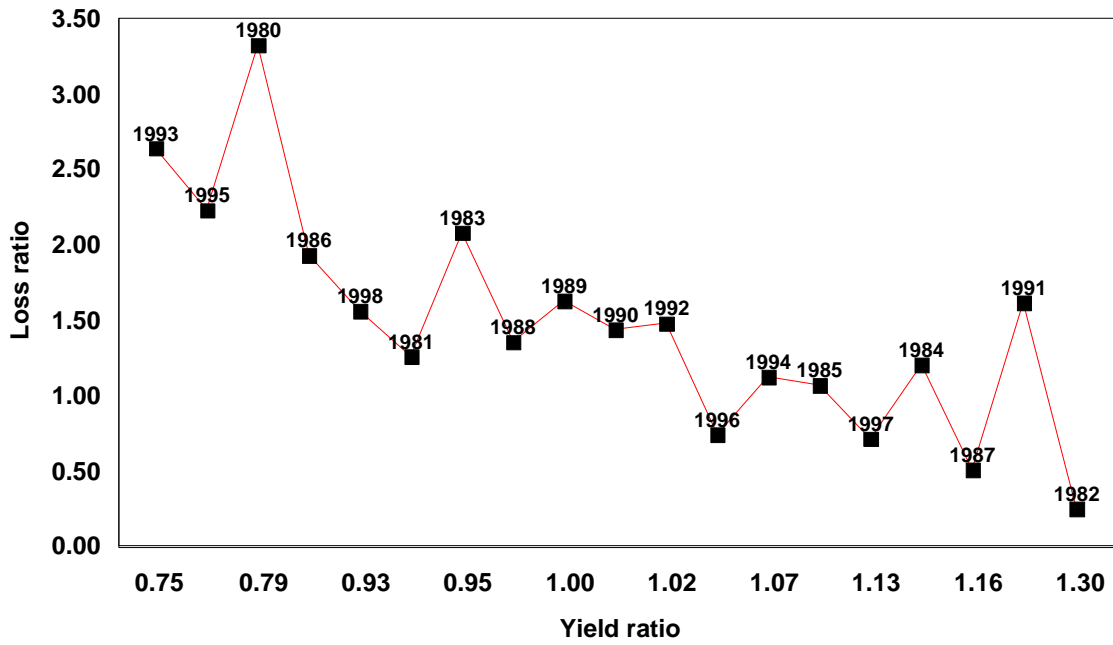


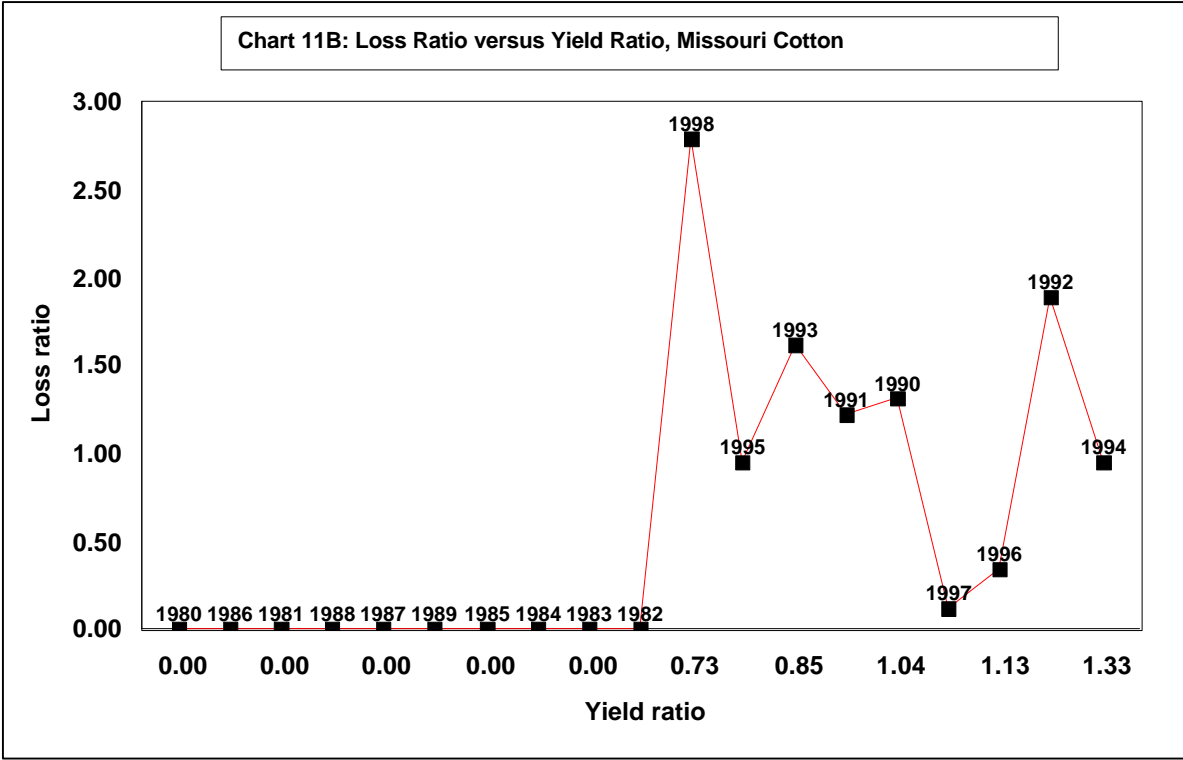
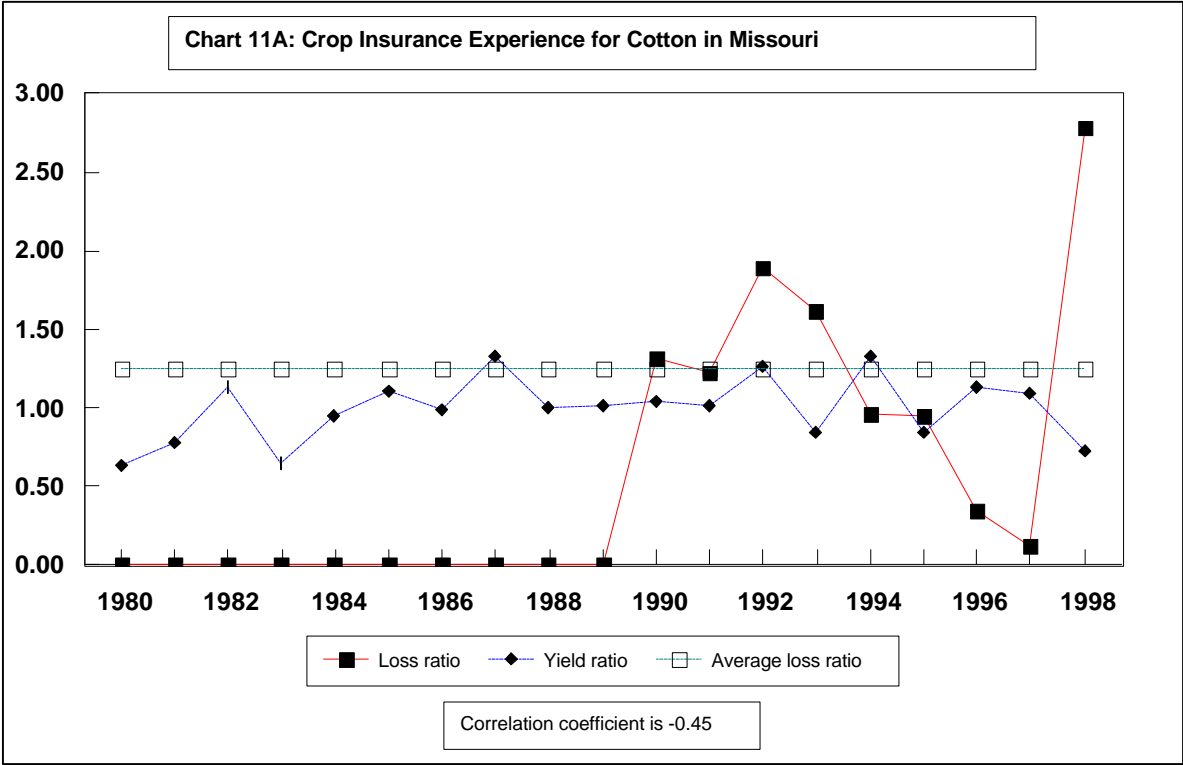
Chart 10A: Crop Insurance Experience for Cotton in Mississippi

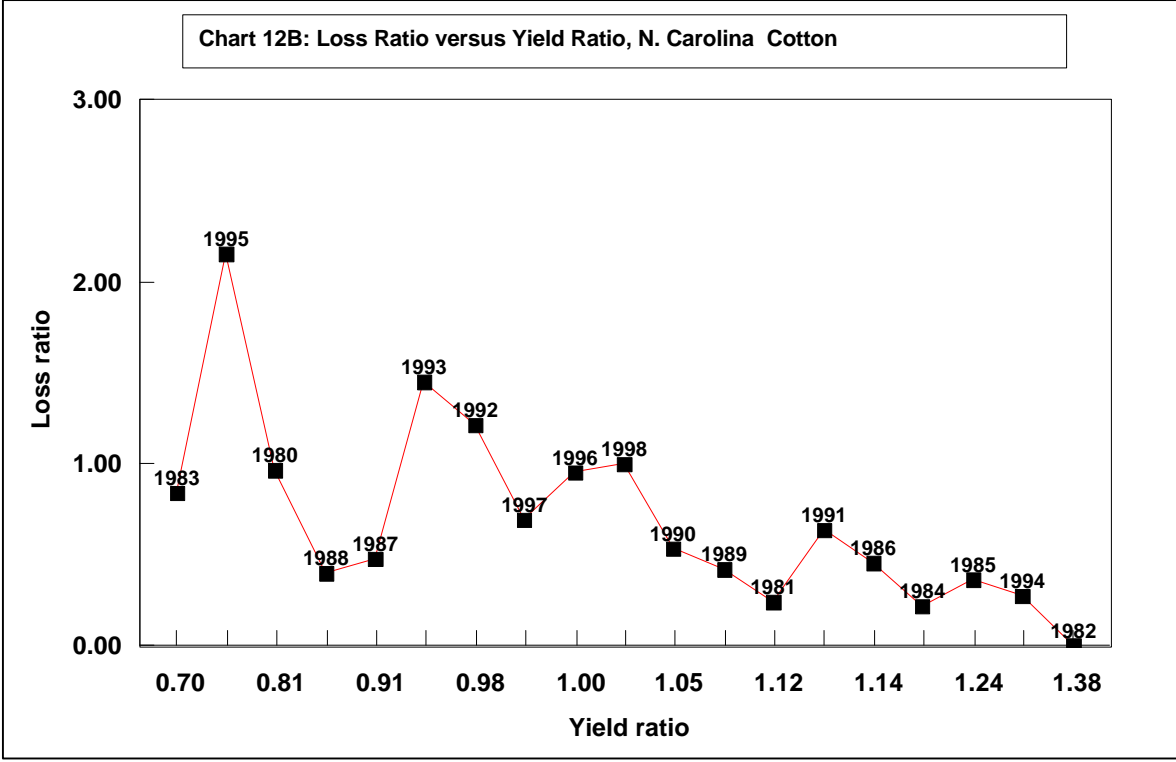
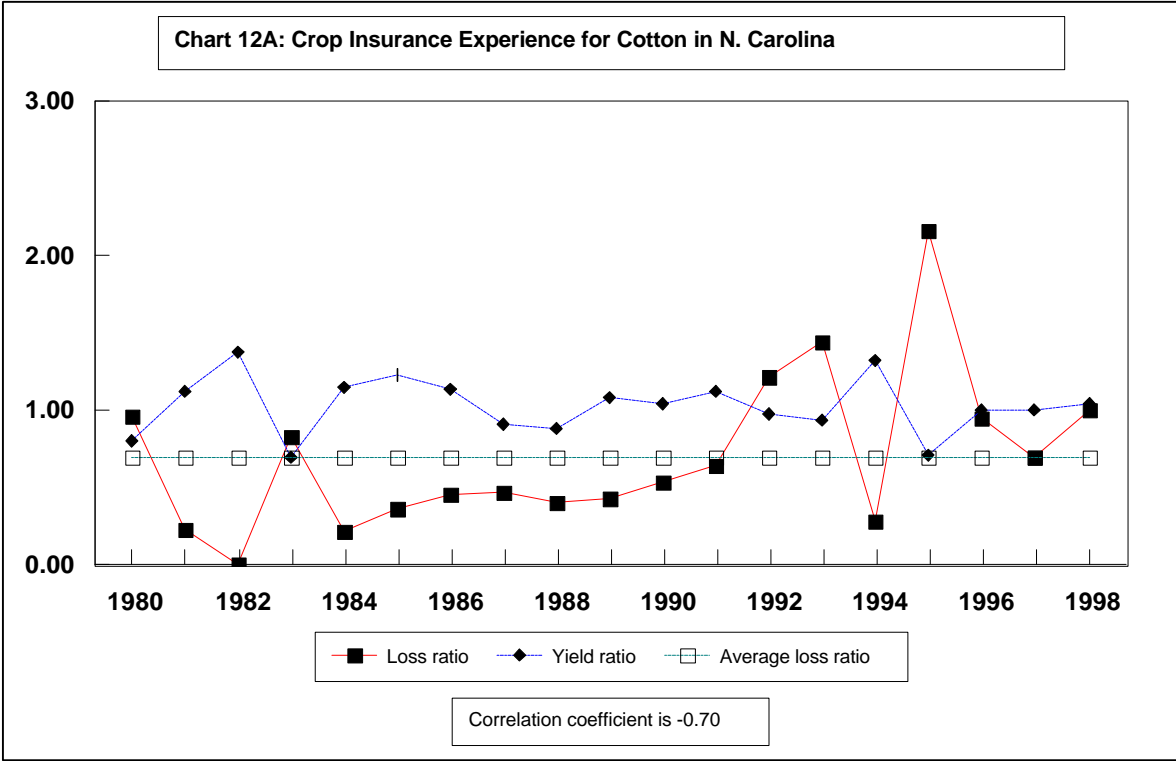


Correlation coefficient is -0.85

Chart 10B: Loss Ratio versus Yield Ratio, Mississippi Cotton







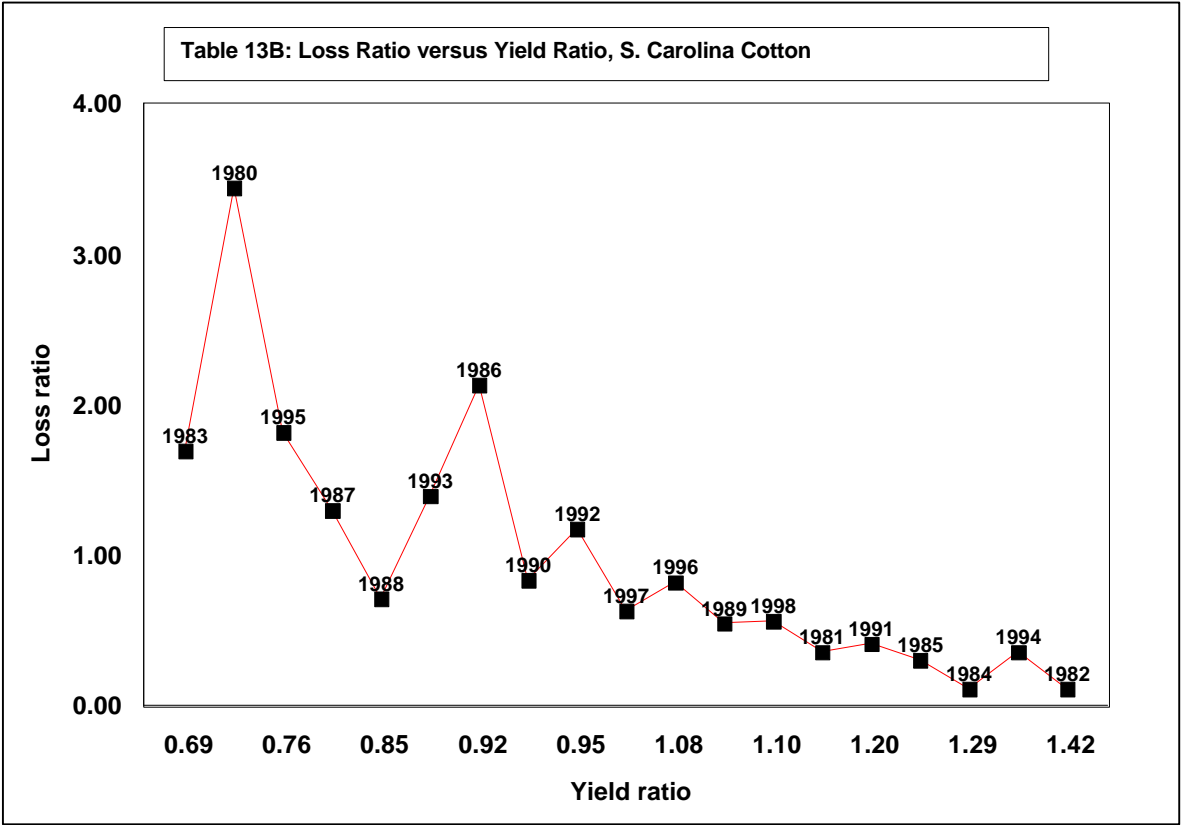
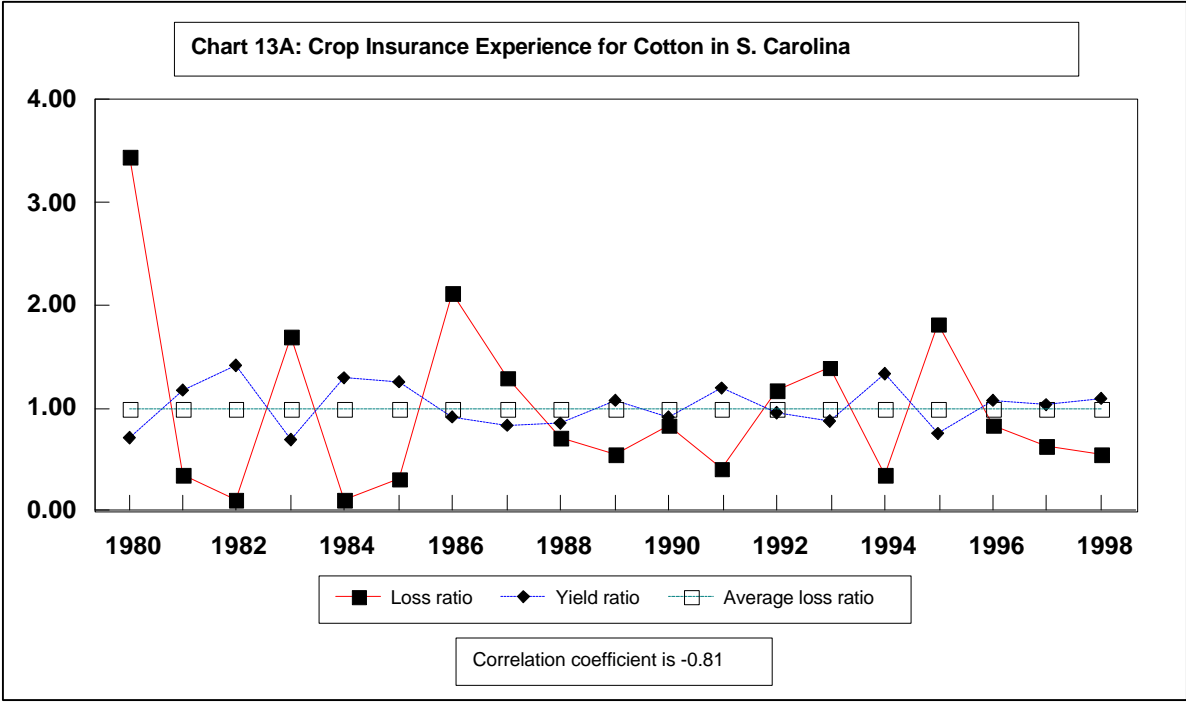
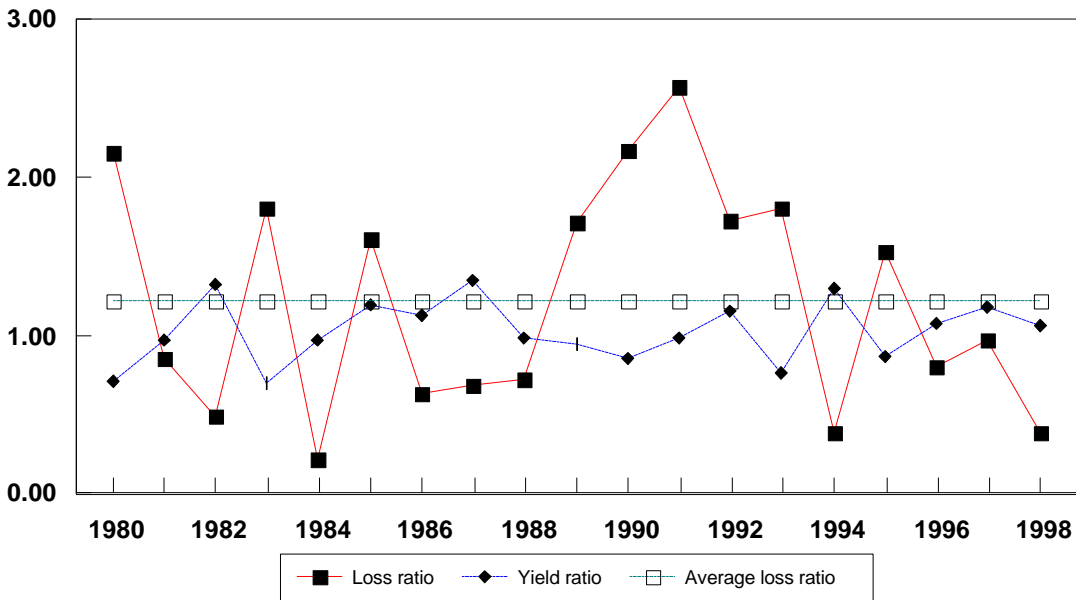


Chart 14A: Crop Insurance Experience for Cotton in Tennessee



Correlation coefficient is -0.58

Chart 14B: Loss Ratio versus Yield Ratio, Tennessee Cotton

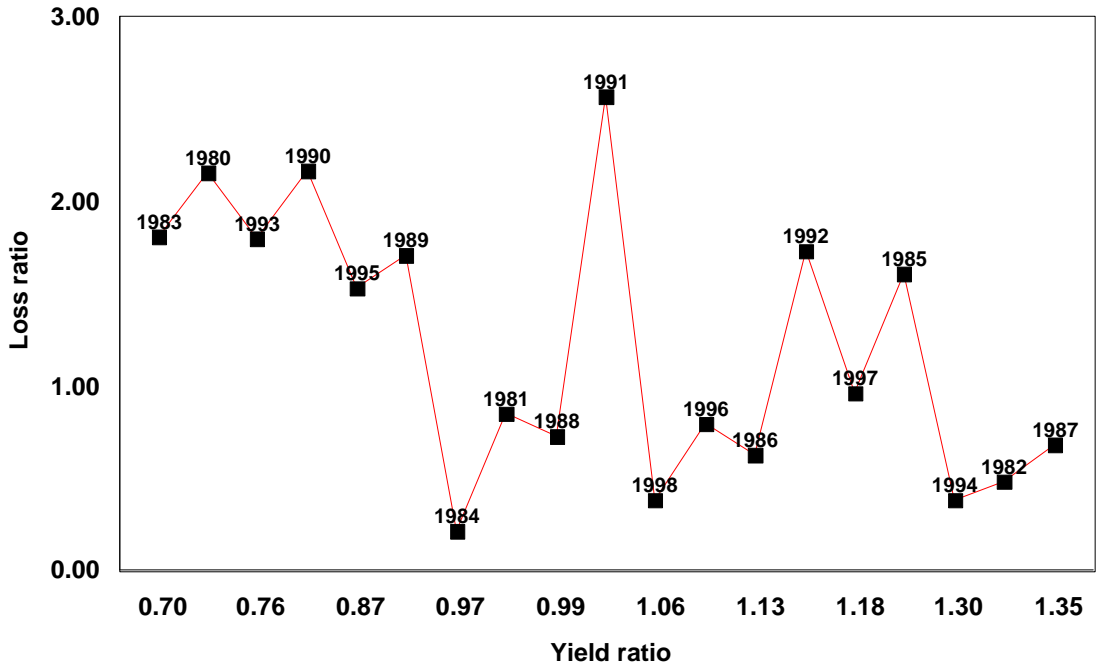


Chart 15: Acres Insured versus "Gap"

