

V I N E Y A R D

revealing the relationship between Americans and their land

AN OCCASIONAL RECORD OF THE NATIONAL PARK SERVICE HISTORIC LANDSCAPE INITIATIVE

VOLUME IV, ISSUE 1 / 2003

Learning from the Lay of the Land: Internet Lesson Plans Highlight Cultural Landscapes

Beth M. Boland, Historian
National Register of Historic Places
National Park Service

On a frosty day in March, some two-dozen detectives tramped through the snow to investigate the scene for clues. These historians, landscape architects, archaeologists, interpreters and educators were searching for clues from the past: character-defining landscape features which could provide a portal to the past design at Fairsted, Frederick Law Olmsted's home in Brookline, Massachusetts. Thus began an intensive week-long workshop sponsored by the Teaching with Historic Places and Historic Landscape Initiative programs of the National Park

Service. The project received base funding from the NPS Cultural Resource Training Initiative while Harvard's Graduate School of Design provided the venue for the intensive week-long workshop. The purpose of the workshop was to create several prototype lesson plans for a variety of cultural landscape types. Starting with *Chicago's Columbus Park: The Prairie Idealized*, in February 2002, several of these lessons have recently made their debut on the Web. The rest will be added over the coming months.

Teaching with Historic Places (TwHP), administered by the National Park Service's National Register of Historic Places, strives to enrich courses in history, social studies, geography, and other subjects; foster an

appreciation for the nation's cultural resources; and encourage collaboration among educators, historians, preservationists, and others. Forming the cornerstone of the program is a series of more than 100 lesson plans on places throughout the country. These lessons are posted on the TwHP Web site at www.cr.nps.gov/nr/twhp.

At a time when it is increasingly difficult for educators to take their classes on field trips, it is still possible to bring places into the classroom effectively. Real places tend to make the history they represent and the people who used them more real, too. The built environment was not created

continued on page 3



Payday at Woodlawn Cemetery. See related article, page 12.

Fort Wayne Parks Conference Raises Awareness for Historic Designed Landscapes in Indiana



Julie Donnell
Friends of the Parks
Fort Wayne, Indiana

It was an interesting, exciting and enlightening day for more than 100 participants of all disciplines. Students, landscape architects, parks professionals, historians and architects gathered in Fort Wayne, Indiana on September 9 and came away with a broad perspective that applied to each discipline. Entitled *Celebrating America's Historic Parks: Connecting the Past with the Future*, this day long symposium highlighted the work of pioneering landscape architects George Kessler and Arthur Schurcliff and used the Kessler park and boulevard system in Fort Wayne as a departure point.

continued on page 3

In This Issue

Features

Internet Lesson Plans Highlight	
Cultural Landscapes	1
Fort Wayne Conference for Historic	
Designed Landscapes in Indiana	1

In The Field

Yew Dell Gardens, Crestwood, KY	5
Woodlawn Cemetery	6

In Every Issue

Survey: Documenting Historic	
Residential Suburbs	9
Treatment: Revealing the Story	
of Virginius Island	12
Call for Papers: 4th National Forum	
on Historic Preservation Practice	15

The Last Word 16

Katherine H. Stevenson

Associate Director, Cultural Resource

Stewardship and Partnerships

de Teel Patterson Tiller

Deputy Associate Director, Cultural Resource

Stewardship and Partnerships

John Robbins

Assistant Director, National Center for Cultural Resources

H. Bryan Mitchell

Manager, Heritage Preservation Services

Charles A. Birnbaum, FASLA

Coordinator, Historic Landscape Initiative

Laurie E. Klenkel

Graphic Design, Vineyard

Mission of the National Park Service

The National Park Service is dedicated to conserving unimpaired the natural and cultural resources and values of the National Park System for the enjoyment, education, and inspiration of this and future generations. The Service is also responsible for managing a great variety of national and international programs designed to help extend the benefits of natural and cultural resource conservation and outdoor recreation throughout this country and the world.



HPS

Heritage
Preservation
Services

Welcome to **VINEYARD**

I am pleased to write this welcome letter to *Vineyard*.

Over the past six months, hundreds of letters of support were received on behalf of the National Park Service's Historic Landscape Initiative (HLI). I want you to know that the NPS is fully committed to the HLI and we recognize the legacy of this successful and still-young program.

This edition of *Vineyard* is representative of the breadth and diversity of the HLI's partnerships—a hallmark of this small and innovative program. First, within the NPS, the HLI has collaborated with the *Teaching with Historic Places* program on the first lesson plans dedicated to cultural landscapes for Columbus Park in Chicago, IL and Mount Auburn Cemetery in Cambridge, MA. The HLI has also just completed an on-line *Current* that explores the myriad issues surrounding the rehabilitation of Virginius Island at Harpers Ferry National Historical Park. The latter was produced in concert with NPS regional landscape architects and historians. On the survey front, a new *National Register Bulletin* on Suburbs is announced herein. All of these efforts illustrate the vigor and diversity of cultural landscape enterprises here at the National Park Service.

The HLI also works with our colleagues outside of the NPS and two such partnership projects are highlighted: Woodlawn Cemetery in the Bronx, NY and Yew Dell gardens in Louisville, KY. In both of these projects the HLI has advised on National Register and Landmark applications, scope of work development and consultant selection, to insure that educated planning and treatment decisions are made.

Finally, a word about the future: We are making new "value added" partnership opportunities happen among the HLI and professionals and organizations committed to preserving our nation's landscape legacy. This will include a broadening of the HLI's mission to support the development of National Historic Landmark designations and National Register nominations for significant historic landscapes nationwide. In addition, the HLI will take the lead among our partners to create a thematic context framework for America's historic landscapes.

I have been pleased to see the impact of this program on both professionals and the general public over the past decade while serving as the Associate Director of Cultural Resource Stewardship and Partnership. I look forward to seeing its important mission reach many more in the future.

Katherine H. Stevenson
Associate Director, Cultural Resource Stewardship and Partnerships

Mission of the Historic Landscape Initiative

The Historic Landscape Initiative develops preservation planning tools that respect and reveal the relationship between Americans and their land.

The Initiative provides essential guidance to accomplish sound preservation practice on a variety of landscapes, from parks and gardens to rural villages and agricultural landscapes.

The Historic Landscape Initiative is committed to ongoing preservation of cultural landscapes that can yield an improved quality of life for all, a sense of place, and identity for future generations.

Cover image: Lakeside Park, Fort Wayne, Indiana, includes this signature pavilion and sunken garden designed by the first Superintendent of Parks, Adolph Jaenicke.

Image right: Swinney Park, designed by Arthur Shurcliffe, includes the Japanese garden by Adolph Jaenicke in 1928. Both of these sites were included on a tour held the day before the conference. Photos courtesy HLI.



Fort Wayne Parks Conference

continued from cover

In the morning, speakers Arleyn Levee, Kurt Culbertson, Elizabeth Hope Cushing, George Kessler, and Arthur Shurcliffe respectively. In the afternoon session Charles Birnbaum laid out the importance of making informed management decisions about designed landscapes in the public domain. After his presentation, Anita Solomon and John Swintosky discussed the practicalities of managing such properties using their experience with the Louisville Olmsted Parks Conservancy as the focus. Finally, Patricia O'Donnell presented her work for Cultural Landscape Reports for Swinney, Lakeside and Memorial Parks in Fort Wayne. The symposium drew both the Mayor of Fort Wayne, Graham Richard and Indiana Congressman Mark Souder. Both officials spoke of their respect for the heritage of Fort Wayne and the surrounding area and their strong support of the parks.

Recently, the city of Indianapolis has taken steps toward pursuing National Register status for its own Kessler designed system of parks and boulevards. Just weeks after the symposium, ARCH, Fort Wayne's historic preservation organization, passed a resolution that it will undertake the same for Fort Wayne's system, partnering with the City of Fort Wayne Historic Preservation Office.

Participants at the symposium have requested a follow up in 2004 to see what progress has been made in Fort Wayne. We hope to continue our partnership with the National Park Service on such future endeavors.

Learning from the Lay of the

Land

continued from cover

randomly, but is the product of choices—whether deliberate or unconscious. It is a primary source of evidence that embodies information about the past experiences, values, tastes, and practices of different cultures and societies. Learning about and from places helps us understand more about broad themes in American history, and this is as true of landscapes as it is of buildings. Helping to demonstrate the breadth and diversity of our nation's nationally significant historic places are eight new lessons on the following cultural landscapes: Jens Jensen's design for Columbus Park, Canyon de Chelly, Boston's Emerald Necklace Park System, "Fairsted," the Frederick Law Olmsted National Historic Site, Mount Auburn Cemetery, Oglethorpe's Plan for Savannah, the University of Virginia Campus, and the Village of Waterford. Collectively, these landscapes represent the spectrum of cultural landscape types:

designed, vernacular, ethnographic and historic sites.

TwHP lessons allow students to make their own discoveries about the past as they practice the art and science of historical investigation. Each lesson consists of a variety of primary and secondary documents, all accompanied by questions. The Getting Started section engages students quickly, as in the lesson on Savannah, Georgia, for which students immediately begin to inspect a 1734 site plan for patterns in the way the town was laid out. Setting the Stage provides enough background information to prepare students to learn. In Locating the Site of Arizona's Canyon de Chelly, students search maps for information on the topography and travelling distances between destinations affecting the lives of the canyon's Navajo residents. In Determining the Facts about the University of Virginia's campus plan, students read Thomas Jefferson's own words to discern his intertwining philosophies of education and democracy, as well as the design intent for his revolutionary academical village. In another lesson, an 1848 ledger sheds light on the products and transportation systems involved in supporting a small mill town like Waterford, Virginia, and in defining its physical arrangement. Visual Evidence also conveys facts; in *Chicago's Columbus Park*, students examine early 20th century photographs to identify "prairie style" landscape features of Jens Jensen's naturalistic design and find evidence of the work required to achieve a harmonious relationship between nature and art. Historic drawings and photographs allow students to compare Fairsted at the time Olmsted, Sr., moved in and 20 years later, after he executed his design and managed it over time.



Participants in a Teaching with Historic Places workshop for writing lesson plans on historic landscapes explore Fairsted, the home of Frederick Law Olmsted.
Courtesy HLI.

Learning from the Lay of the Land

**Chicago's Columbus Park:
The Prairie Idealized**

Here are individuals who hardly get beyond the city limits... They used the solitude of the pastoral meadow and the nesting groves of grass and woodland to conduct much the same and give of the great city!

In the early years of the 20th century, when Carl Zauderer was the mayor of Chicago, he believed the work being done in the city involving, reworking, planning, building, creating, rebuilding, that the park was enjoying the work done in the "City of the Big Shoulders" should be able to create and strong and "strong" a well-rehearsed Danish message with a flowing meadow was endeavoring to create a landscape where the people of the densely populated city could refresh their spirits and reduce their anxieties after laboring so hard.

Just before came to the United States when he was about 24 years old, settled in Chicago, and promptly fell in love with the Midwestern prairie landscape. Although some thought the prairie was boring, monotonous, and ordinary, Jencks saw great beauty in the meadows, tree-lined groves, long winding rivers, natural rock formations and waterfalls, and the flat meadows filled with colorful native grasses and wildflowers. From these street-scapes and gardens to "New York, Chicago, Denver, San Francisco and Chief Landscape Designer, and then becoming a consulting landscape designer. Just before designing Columbus Park in 1915. On a parcel of land that consisted of about 128 acres, raised for the explorer who opened the American to European settlers, Jencks would attempt to interpret the same landscape of Illinois as comprehensively as possible.

TABLE OF CONTENTS	RELATED INFORMATION
About This Lesson	How to Use a TwHP Lesson
Setting Standards, Inquiry Questions	Lessons on District Topics
Setting the Stage: Historical Context	TwHP Home
Learning the Site Maps	National Register Home
1. Mount Park System, Chicago, 1902	About the National Register
2. Jencks's original plan for Columbus Park	How the National Register Works
Understanding the Facts: Readings	Contact TwHP
1. The National Register	
2. Columbus Park, The Prairie Idealized	
3. Death of the Prairie	
Visual Evidence: Images	This lesson is based on Columbus Park, one of the thousands of properties listed in the National Register of Historic Places.
1. Decoral architectural style	
2. Street car, c. 1910	
3. Historic park in 1900, c. 1910	
4. Excavation of the Louisa, 1910	
5. The Louisa with Jencks, c. 1900	
6. Council Ridge with children, 1910s	
7. Original rendering, built with children, c. 1910	
Putting It All Together: Activities	
1. Know Your Site	
2. Green Spaces	
Supplemental Resources	

First page of an online Teaching with Historic Places lesson plan for Columbus Park, Chicago, IL. Search for other available lessons at www.cr.nps.gov/nr/twhp/descrip.

Putting it All Together activities help students synthesize information in the lessons and put their knowledge to work. After learning about Navajo agriculture at Canyon de Chelly, students research information about other tribes mentioned in the lesson, work in teams to determine the impact of various factors on tribal farming and on the economy of their own region, and/or conduct oral history projects in their own community. After studying Olmsted, Olmsted & Eliot's design for Boston's Emerald Necklace Park System, class members take on one or more assignments. This includes examining local historical, topographical, and zoning maps to form a proposal for a park or park system in their neighborhood; creating a publicity brochure

for either an existing park or one of their own design; or inviting a local landscape architect to make a presentation and then work with-in a modest budget to plan a small landscape design project at their school. Activities like these, which lead students to research their own communities, raise awareness of the richness, variety, and value of historic places around them. Finally, a Supplemental Resources link to other useful Web sites, such as the Cultural Landscape Foundation's Columbus Park project (www.tclf.org/columbus) helps teachers and students expand each lesson.

In an era of increasing emphasis on standards and assessment, teachers must be able to see how educational tools help them meet curriculum requirements. TwHP lessons reference specific national standards for history grades 5-12 (*National Standards for History: Basic Edition*, National Center for History in the Schools, University of California, Los Angeles, 1996). The TwHP lesson plans also will eventually cite relevant performance expectations from national social studies standards for middle schools (*Expectations of Excellence: Curriculum Standards for Social Studies Bulletin 89*, National Council for the Social Studies, Washington, DC, 1994). For example, learning about the origins and evolution of Savannah's town plan relates to national history standards having to do with the role of immigrants in forming European colonies, the roots of representative government and political rights, and colonial economic life and labor systems (Era 2: Standards 1A, 2A, 3A, and 3B). Mount Auburn Cemetery embodies responses to America's first era of urbanization, as well as to the reform efforts growing out of emerging 19th century literary, artistic, and intellectual movements (Era 4: Standards 2B and 4B). Boston's Emerald Necklace helps students meet the social studies requirements that students be able to explain how people change their environments on the basis of shared values (Themes I: Culture; Theme III: People, Places, Environment), evaluate alternative uses of land and resources (Theme III), and examine strategies designed to strengthen the common good (Theme X: Civic Ideals and Practices).

Learning who we are and where we come from by investigating our nation's cultural landscapes extends a classroom's horizons for both teachers and students, enriching the ed-

ucational process. At the same time, as their awareness of and appreciation for cultural landscapes increases, students can develop their own personal ethics about stewardship of the land and decisions about the world around them.

Looking ahead, the TwHP program and the Historic Landscape Initiative hope to collaborate on future lesson plans for our nation's nationally significant cultural landscapes.

Mount Auburn Cemetery: A New American Landscape

The situation of Mount Auburn Cemetery, in one of the great natural beauties of the region to which it has been devoted... It is a fine piece, where the best of nature shall have combined among the trees, and has already begun to do, creating a landscape of the most prospective character and the most beautiful. Its place in the evolution of our city will prove stronger attraction to the nation... (John Jencks, letter, made consultation on creating landscape and monuments... This can be felt above, not on the construction and arranging also of sites... but under the great verdure of the field under the broad and cheerful light of heaven...)

The existing grounds of which Jacob Bigelow was here already owner were the remains of a plot that would be used as Mount Auburn Cemetery. The establishment of Mount Auburn Cemetery, about five miles north of Boston, marked a major shift in the way Americans viewed their dead. As the country's first large-scale designed landscape open to the public, it required many thoughtful and well-considered, first public parks, and the first designed urban plan in the United States.

"When 'A Discourse on the Death of Death' a speech delivered by Jacob Bigelow to the Boston Society for the Promotion of Right Knowledge in 1817"

TABLE OF CONTENTS	RELATED INFORMATION
About This Lesson	How to Use a TwHP Lesson
Setting Standards, Inquiry Questions	Lessons on District Topics
Setting the Stage: Historical Context	TwHP Home
Learning the Site Maps	National Register Home
1. Boston and outside, 1800	About the National Register
2. Mount Auburn Cemetery, 1800	How the National Register Works
Understanding the Facts: Readings	Contact TwHP
1. The National Register	
2. The Landscape Architect	
3. A Plan for the 19th Century	
4. Landscape and History	
Visual Evidence: Images	This lesson is based on Mount Auburn Cemetery, one of the thousands of properties listed in the National Register of Historic Places.
1. Engraving of the City of Boston, 1811	
2. Engraving of the City of Boston, 1811	
3. Engraving of the City of Boston, 1811	
4. Engraving of the City of Boston, 1811	
5. Engraving of the City of Boston, 1811	
6. Engraving of the City of Boston, 1811	
7. Engraving of the City of Boston, 1811	
8. Engraving of the City of Boston, 1811	
9. Engraving of the City of Boston, 1811	
10. Engraving of the City of Boston, 1811	
Putting It All Together: Activities	
1. Map Study	
2. Landscape in Everyday Life	
3. Observing the Landscape	
Supplemental Resources	

First page of an online Teaching with Historic Places lesson plan for Mount Auburn Cemetery in Cambridge, MA. Lessons are indexed by theme, time period, state, and national history standards at www.cr.nps.gov/nr/twhp/descrip.

Beth Boland is a historian with the National Register of Historic Places and the Program Manager for Teaching with Historic Places. Contact her at Beth_Boland@nps.gov

Yew Dell Gardens, Crestwood, Kentucky Guiding a Unique Cultural Landscape into the Future

Mary F. Rounsavall, President
Yew Dell, Inc.

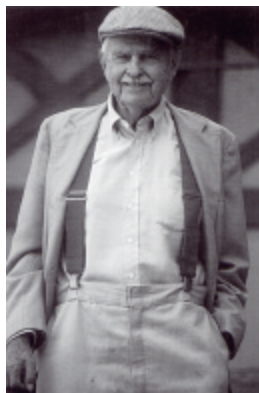
Yew Dell was the home, office, nursery, and farm of Theodore Klein, a nationally recognized horticulturist, plantsman and nurseryman as well as an artist and craftsman. His family emigrated in the 19th century from Germany and settled in the Cincinnati area, where his grandfather worked for Nicholas Longworth in the then-thriving vineyards of that region. When the vineyards failed, Klein's family made their way to Oldham County, Kentucky, where Klein himself had a milk route at the age of seven.

Theodore Klein and his wife Martha Lee bought the 200-acre farm now known as Yew Dell in Crestwood in 1941. Over the years, Klein began to find success through hard work in his nursery business, marketing hollies and yews to the nurseries and landscapers throughout the area.

He was the largest wholesale grower of nursery stock in the Louisville area. Klein was able to create a little haven for himself and his family on the farm, named "Yew Dell" for the Japanese Yew he was so well known for. He moved his nursery stock elsewhere and planted his arboretum with well over 1100 specimen and rare trees and shrubs, some collected from friends in horticulture, some new cultivars of his own propagating efforts.

Klein designed gardens at Yew Dell to please the eye: a pleached arbor of his father's own "Klein #1" holly trees, with the only entrance to a tiny secret garden hidden inside, a serpentine garden of evergreens and conifers

in every texture and color imaginable, composed with a painter's eye, a sunken garden with a pond,



*Theodore Roosevelt Klein, 1905-1998.
Photo by Mike Hayman.*

a walled rose garden, and formal gardens, topiaries, and a dwarf conifer garden, set with small millstones. He built greenhouses, barns for his cattle, various out-buildings, imported a log cabin from another Kentucky town, and designed and built his Cotswolds-style home of fieldstone with a slate roof, leaded glass windows, and paneling which he had milled himself of cherry and wormy chestnut. In 1952, Klein added a stone castle as a poolhouse—a miniature castle, complete with turrets, slate roof, a spiral staircase, his own stone carvings, stained glass windows, and wrought iron chandeliers he forged himself.

In 1998, Theodore Klein died at the great age of 93, leaving behind his life's work of art, Yew Dell.

Less than two years ago, a small, passionate band of hard-working volunteers got together to save Yew Dell from the irreversible fate of development. Initially organized as a Committee of the Oldham County Historical Society, this group was able to raise funds to undertake an option for purchase of the property with Theodore Klein's heirs. The group grew and matured and incorporated itself independently in May of 2001, and received non-profit status in October of 2001. Through hard work and the generosity of many donors, the remaining 33 acres of the property was purchased in February of 2002. Today, the mission of Yew Dell Gardens is "to continue the horticultural legacy of Theodore Klein; to encourage exploration of the arboretum, gardens, and extraordinary architectural setting; and to provide opportunities for education, enrichment, and enjoyment."

The Board of Yew Dell has been fortunate to gain expert support at both a state and local level including the Kentucky Heritage Council, the Kentucky Division of Forestry, the Garden Conservancy and the National Park Service Historic Landscape Initiative (HLI).



*The castle at Yew Dell.
Photo by Marian Klein Koehler.*

In particular, the Board is grateful to the HLI for their help in working with the Board and with its local consulting historian to develop thematic structure areas for Yew Dell's nomination to the National Register of Historic Places. This partnership has been very valuable in helping Yew Dell's leadership and its constituency view Yew Dell as an important historic and cultural landscape for this area. The partnership with the Initiative has also benefited Yew Dell in a variety of other ways. This included advice on specialized consultants, assisting with the development of scope for a future Cultural Landscape Report (CLR), and perhaps most important, encouraging the Board to realize that it was important to pursue National Register status in order to determine the period of significance for Klein's eclectic landscape.

This in particular is essential, as it will be invaluable in determining Klein's design intent and in avoiding the pitfalls of creating gardens out of context for this charming historical site.

For additional information, contact Yew Dell at: P.O. Box 1334, Crestwood, KY 40014; (502) 241-4788; e-mail: yewdell@lou-telecom.net; website: www.yewdellgardens.org

Woodlawn Cemetery, Bronx, New York: America's First Memorial Park Cemetery

Susan Olsen
Executive Director
Friends of the Woodlawn Cemetery

The Woodlawn Cemetery (est. 1863) is among the nation's largest and best-known burial grounds that began when a group of railroad entrepreneurs initially invested in the cemetery project. They purchased 310 acres of farmland, and within a decade they increased the parcel an additional 90 acres. To promote the project and solicit sales, an office was set up in midtown Manhattan near Madison Park. Advertisements announced that the new cemetery was only thirty minutes by train from the city, and that there was a convenient train station at the entrance to the grounds. By 1880, The Woodlawn Cemetery had become the place for prominent New York families to purchase lots for multiple generations.

Today, The Woodlawn Cemetery serves as the final resting place for many well-known celebrities including: F.W. Woolworth, Edward Kennedy "Duke" Ellington, Miles Davis, Alva Vanderbilt Belmont, Fiorello LaGuardia, Herman Melville, Elizabeth Cady Stanton, Admiral David Glasgow Farragut,

When plots of the cemetery were divided into lots, models were made for use by the sales office. Photo circa 1929, courtesy Friends of the Woodlawn Cemetery.



George M. Cohan, Irving Berlin, and Madame C.J. Walker. There are over 1250 mausoleums on the grounds; John Russell Pope, McKim Mead and White, James Gamble Rogers, Stanford White, Raymond Hood and Richard Howland Hunt are among the architects that designed memorials in the cemetery.

Several important landscape gardeners and landscape architects also contributed to the beauty of the Woodlawn Cemetery: James C. Sidney, the designer of Philadelphia's Fairmount Park (1859) and South Laurel Hill Cemetery (1862) was hired to develop the initial design of the 400-acre site. Beatrice Jones Farrand, Charles Wellford Leavitt, Ferruccio Vitale and the Olmsted Brothers are among those who supervised the development and the maintenance of several memorial gardens.

Despite the list of nationally significant notables associated with the

Aerial photographs of the cemetery were taken for use in the pictorial publications issued to current and potential lot owners. Photo circa 1921, courtesy Friends of the Woodlawn Cemetery.

Woodlawn Cemetery, the historic designed landscape is not listed on the National Register of Historic Places. The Coordinator of the Historic Landscape Initiative noted during his recent visit to the cemetery that "this was especially surprising when one considers that there are over 1,800 cemeteries and burial grounds listed on the National Register, and that Woodlawn is one of the pre-eminent examples of the Memorial Park Movement in America."

As an active cemetery dedicated to serving the New York community, in the past there was concern that designation might deter the cemetery from constructing mausoleums, columbariums, and other structures to accommodate future interments. The Trustees and new management staff are now aggressively dealing with the challenge of protecting a dynamic cultural resource while providing burial services for one of the largest metropolitan areas in the world.

The first step Woodlawn's Trustees took towards focusing on the site, as a cultural resource was to establish a not-for-profit

Among the most successful memorial settings is the Harkness Lot designed by James Gamble Rogers and Beatrix Jones Ferrand. Photo courtesy Friends of the Woodlawn Cemetery.

support organization with a mission to document, interpret and preserve the cemetery. In recent years many historically significant rural cemeteries such as Mount Auburn Cemetery in Cambridge, MA and Laurel Hill Cemetery in Philadelphia, PA, have established such not-for-profit "Friends" groups and Foundations to raise treatment, maintenance and management funds and to provide programming for the non-traditional visitor. These newly founded support organizations work to develop education and outreach programs, preserve deteriorating monuments, and to protect the cemetery's natural and cultural resources. The success of these groups is dependent upon their ability to develop partnerships that will strengthen and expand the efforts to interpret and preserve these rich cultural resources.

The Friends of the Woodlawn Cemetery was founded in the spring of 2000; for the past two years the organization has been focused on raising public awareness by coor-

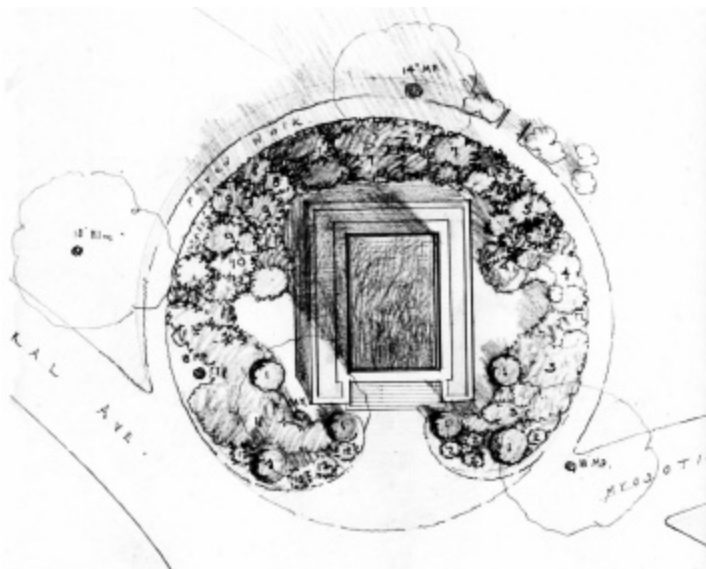


inating a public tour program, soliciting members and generating publicity for the site. Now that the Friends of the Woodlawn Cemetery has established a devoted and enthusiastic constituency, the time has come to address the organization's primary challenge; the execution of preservation and interpretation plan for the historic cemetery.

What make the development of a comprehensive plan for the Woodlawn Cemetery so challenging is the size of site, the number of memorials, plants and trees and the enormous wealth of records held in the archives of the Woodlawn Cemetery. The first step in approaching this daunting task was to pick a starting point and after meeting with archivists, preservationists, conservators and

other professionals, Cemetery staff were encouraged to begin with the "big picture", focusing on the physical development of the landscape over time. We called upon the coordinator of the Historic Landscape Initiative (HLI) of the National Park Service to guide us in the development of the scope of work for a phased approach to the cultural landscape study. Our priorities were to develop a scope of work that was: organized to be eligible for outside support, clearly defined the roles of project partners, identified the responsibilities of the Friends Board, Management Staff and Cemetery Trustees, and that produced manageable reports that were useful tools in planning preservation activities and ongoing operations.

Below, left and right: Before plantings were allowed, plans and sketches had to be submitted to the cemetery superintendent for review. The proposed gardens for the Francis P. Garvan Mausoleum were drawn by J. J. Levison. Courtesy Friends of the Woodlawn Cemetery.



Woodlawn Cemetery
continued from previous page 7

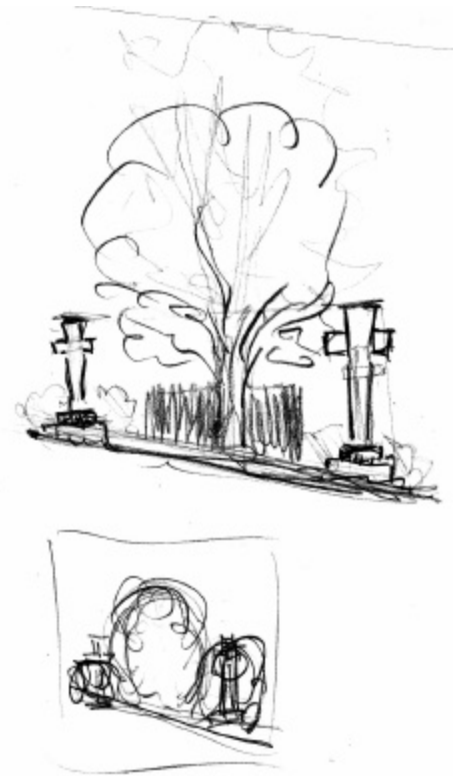
Working in concert with the HLI, we are now embarking on a preservation planning process that closely adheres to *Preservation Brief #36: Protecting Cultural Landscapes*. These five primary project phases includes:

- Historical Research - production of narrative history of the cemetery, addressing the cemetery's change over time.
- Period Plans - determination of key periods in the cemetery's evolution, includes analysis of plans, comparing designs to the existing conditions and identifying "gaps" in the historical narrative.
- Existing Conditions - documentation and mapping of current visual and spatial relationships, topography, plantings, roadways, water features, structures and furnishings.
- Site Analysis and Evaluation - determination of the integrity and period of significance of the Woodlawn Cemetery landscape.
- Treatment/Master Plan - Recommendations for preservation, rehabilitation and/or restoration,

tion of character-defining landscape features, including phasing and strategic guidelines for implementation.

These preservation planning phases are to be executed in sequence, but can be done independently thus making it a "fundable" series of projects. Within each phase, there are logical and well defined "points of commitment" where the cemetery management will be able to determine what resources will be needed to implement and maintain a well planned treatment and management plan for the grounds. Final phases of the work plan are designed to integrate the individual plot owners into the project, providing them with the information and inspiration to preserve and restore the private gardens planted in the early 20th century. Also, by approaching the project in this manner, trustees, volunteers and staff are given manageable amounts of material to review and are not overwhelmed by the quantity of information and the enormity of cost.

Later this year, the Friends of the Woodlawn Cemetery plan to initiate work on a Cultural Landscape Report. We are now confident that this effort will assist the Woodlawn Cemetery in making decisions about day to day care, planning for new uses, preparing a nomination for National Register or National Historic Landmark designation,

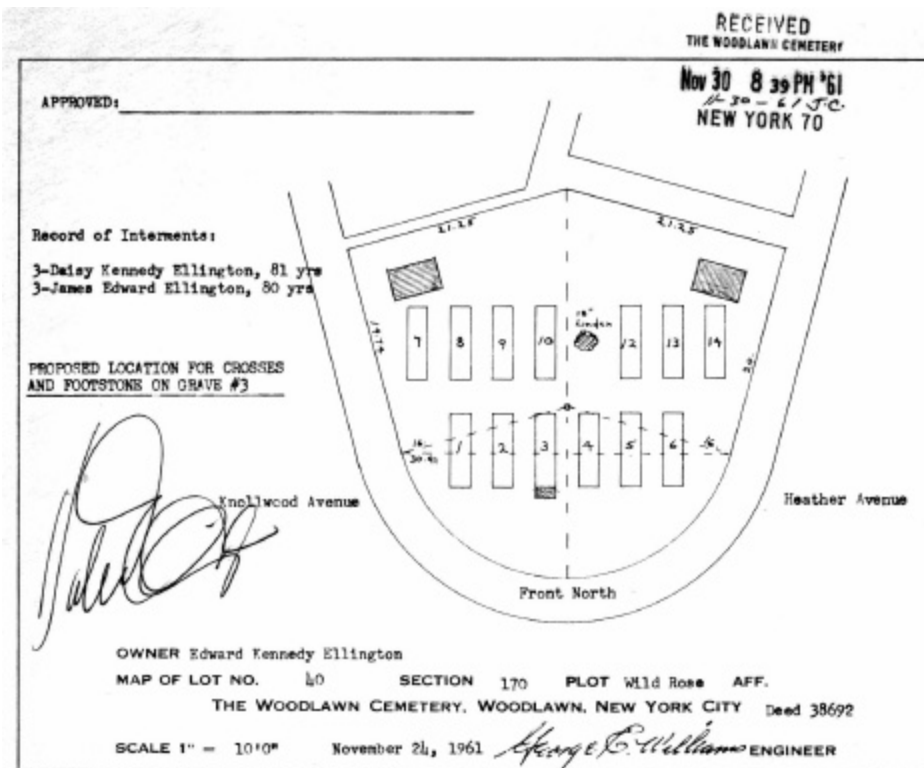


and energizing and enriching our interpretive programs. As we prepare to select our professional consultants, we will continue to involve our project partners in each phase to guarantee the success of this very exciting endeavor.

To learn more contact Susan Olsen at FriendsOfWoodlawn@msn.com or call 718.920.1469.

Above: Site sketches for the placement of memorials and shrubbery on the Duke Ellington Lot. Circa 1961, courtesy Friends of the Woodlawn Cemetery.

Left: Proposed Lot diagram for placement of monuments approved by the owner, Duke Ellington. Circa 1961, courtesy Friends of the Woodlawn Cemetery.



Documenting Historic Residential Suburbs

Linda Flint McClelland
National Register of Historic Places
National Park Service

New NPS National Register Bulletin to be Issued

Historically the residential suburb has been one of the strongest determinants of the American landscape—one that by the mid-twentieth century was "home" to most Americans. Many of America's residential suburbs resulted from the collaboration of developers, planners, architects, and landscape architects. The contributions of these professional groups, individually and collectively, give American suburbs their characteristic identity as historic neighborhoods, collections of residential architecture, and designed landscapes. In addition to the professionally designed plans and landscaped settings of many historic subdivisions, countless vernacular landscapes have been shaped in tandem by homebuilders, seeking conformity with local zoning regulations and national policy, and homeowners, following popular trends in home design and gardening.

Historic residential suburbs reflect land use decisions and landscape design in three layers: first, the location within a growing metropolitan area; second, the layout of the subdivision with provisions for streets, utilities, house lots, and community facilities; and finally, the design of the house and yard. Examining these layers in the context of significant patterns of America's suburbanization is the focus of the new National Register Bulletin, *Historic Residential Suburbs: Guidelines for Evaluation and Documentation*, to be released this fall. Readers are encouraged to consider the significance of historic suburbs in a variety of areas, including community development and planning, landscape architecture, architecture, and social history.



Co-authored by Professor David L. Ames of the University of Delaware and National Register historian Linda McClelland, the bulletin is the latest in a series of National Register publications dedicated to specific cultural landscape types; previous titles include cemeteries, mining sites and battlefields.

This issue's Survey feature presents highlights from the Bulletin relating to the inventory and documentation of residential suburbs as cultural landscapes.

Location

A number of factors typically influenced the selection of a location for residential development, the foremost being the presence of a transportation system that made daily commuting to the city or other places of employment possible. Natural topography and the presence of scenic and recreational resources, including parks and parkways, have also exerted considerable influence on the location of planned suburbs. Zoning regulations and comprehensive planning practices adopted by many localities in the twentieth century further affected the location, as well as the character, of suburban development. Other factors include demographic trends, local demand for housing, opportunities for employment, availability of water and other utilities, proximity to commercial or civic facilities, and the cost of purchasing and developing a particular parcel of land.

At Washington Highlands (1916) in Wauwatosa, Wisconsin, planners Werner Hegemann and Elbert Peets created a park-like setting for the homes of Milwaukee's growing professional class by laying out winding streets to follow the site's topography and using the natural streambed as a design element.

Photo by Cynthia Lynch, courtesy Wisconsin Historical Society. Listed 12/1989.

Subdivision Design

Generally recorded in the form of a plat or a general development plan, the layout of a subdivision is based on a parcel of land having precise boundaries. This layer is characterized by the organization of space providing an internal circulation network, a system of utilities, blocks of buildable house lots, and, sometimes, community facilities, such as parks, playgrounds, and schools. A number of factors influence subdivision design, including natural topography, site drainage, availability of utilities, picturesque qualities, and relationship to nearby roads or transportation systems.

Subdivision design often reflected principles and practices drawn from the professions of landscape architecture, civil engineering or city planning. From the mid-nineteenth to the early twentieth centuries, planned communities were developed to attract rising middle- and upper-income residents by offering fine homes and a cohesive and somewhat private, park-like setting. Such suburbs relied on the design expertise of ac-

Documenting Residential Suburbs



Heralding the emergence of a regional style of gardening, the designers of Pasadena's Prospect Park Subdivision (1906) transformed the dry and barren site along the Arroyo Seco into one of southern California's earliest and most attractive planned suburbs. Photo, c. 1910, courtesy Pasadena Historical Society. Listed 4/1983.

Completed landscape architects and town planners, and legal tools, such as deed restrictions and trust indentures, to ensure that a developer's vision and homeowners' expectations were fulfilled. In the 1920s, collaboration between developers and landscape architects became more commonplace, and professional practices derived from nineteenth-century curvilinear designs such as Riverside and Llewellyn Park, the turn-of-the-century City Beautiful movement, and subsequent Garden City experiments--began to influence the design of middle and lower-income communities. In the 1930s, Federal Housing Administration (FHA) standards for the design of neighborhoods of small homes and an approval process for mortgage insurance institutionalized established principles and practices of landscape architecture and community planning for the design of neighborhoods of small, affordable houses. Established in 1936, the Urban Land Institute further promoted community development based on established principles of landscape design and planning.

House and Yard

Traditionally called the home grounds, this layer repre-

sents the spatial arrangement of each home with its dwelling, garage, lawns, walks, driveway, gardens, walls, fences, plantings, and activity areas. This layer typically reflects the economic status, lifestyle, and social and cultural attitudes of a neighborhood's residents. The design of the house and yard may be influenced by deed restrictions, subdivision regulations, prevailing trends in building construction, changing transportation technologies, popular landscape and architectural styles, and, beginning in the 1930s, FHA standards.

As an aesthetic enhancement and source of recreational activity, gardening is integral to the suburban experience. Domestic yard design may reflect popular trends in gardening and conceptions about the function and use of the yard. The design of a house and yard may reflect popular trends introduced by the developer or homebuilder, as well as the tastes, talents, and interests of individual homeowners. Practical guidebooks, such as A.J. Downing's *Treatise on the Theory and Practice of Landscape Gardening* (1841), Frank Scott's *Art of Beautifying Suburban Home Grounds of A Small Extent* (1870), Samuel Parson Jr.'s *How to Plan the Home Grounds* (1899), Myrl E. Bottomley's *The Art of Home Landscape* (1935) and Garrett Eckbo's *Landscape for Living* (1950), historically exerted considerable influence on the spatial arrangement and landscape design of neighborhood streets and suburban yards.

Domestic gardening flourished under the influence of popular magazines such as *Country Life in America*, *The Garden Magazine*, and *House and Garden*. A host of writings by landscape architects and expert gardeners appealed to increasing numbers of suburban households. These included Mabel

Osgood Wright's *The Garden of a Commuter's Wife* (1901), Helena Rutherford Ely's *A Woman's Hardy Garden* (1903), Louisa Yeoman King's *The Well-Considered Garden* (1915), Grace Tabor's *The Landscape Gardening Book* (1911) and *Come Into My Garden* (1921), Ruth Bramley Dean's *The Liveable House, Its Garden* (1917), and Fletcher Steele's *Design in the Little Garden* (1926).

Documenting American Suburbs

Through annotated chronologies and a detailed text, the Bulletin traces the history of significant patterns in America's suburbanization, including transportation, land development practices, subdivision design, home financing, and popular trends in house and garden design. The Bulletin recognizes historic suburbs, such as Riverside, Forest Hills Garden, Myers Park, and Radburn, which established precedents for design as well as many regional and local examples that reflect broad national trends. It also lists many of the pattern books, landscape guides, and popular magazines that historically influenced community design, house construction, yard design, and domestic gardening practices.

Intended to help preservation and design professionals understand local patterns

Designed by the Olmsted Brothers for real estate developer Edward Bouton, Guilford (1912) in Baltimore has been recognized for its artistic arrangement of tree-lined streets, planted medians, cul-de-sacs, parks, and plantings and its reflection of City Beautiful and Garden City movements.

Photo by Greg Pease, courtesy Maryland Department Housing and Economic Development. Listed 7/2001.





Reflecting the modernistic principles promoted by western landscape architects Thomas Church and Garrett Eckbo, the landscape design of Arapahoe Acres, a postwar subdivision in Englewood, Colorado, is characterized by the flowing space of neighboring front lawns, sculptural treatment of shrubs and trees, and enclosure of private outdoor rooms visible from house interiors. Photograph by Diane Wray, courtesy Colorado Historical Society. Listed 11/1998.

of suburbanization, the Bulletin lists informative historical sources, such as recorded plats, real estate advertisements, and transportation maps, that can be found in local libraries and courthouses. It also guides readers through the process of developing local contexts, researching historical records, mapping suburban growth, and surveying existing neighborhoods. It ends with an extensive list of recommended readings.

Through an extensive literature search, the Bulletin's authors examined the contributions that planners, landscape architects, developers, public officials and expert gardeners, made to the planning and landscape design of suburban neighborhoods, yards, and gardens. The authors relied heavily on existing National Register listings as a source of information about American suburbs and as verification of the broad national patterns documented by academic studies and other secondary sources. The recent publication of *Pioneers of American Landscape Design* (McGraw Hill Companies, 2000) enabled the authors to trace the careers and work of leading designers and planners. This includes A. J. Downing, the Olmsted firm, John Nolen, Henry Hubbard, and Henry Wright, as well as regional practitioners such as Earle Sumner Draper, Stephen Child, O.C. Simonds and

Hare and Hare. *Pioneers* also provided insights into the careers of lesser-known, but equally influential individuals, such as Kate Sessions, Mrs. Francis King, and Wilhelm Miller who contributed to allied fields such as horticulture and garden-writing.

Through National Register listings, scholars, design and historic preservation professionals and the public are helping to document the nation's rich legacy of residential suburbs. To date, more than 7,000 residential districts have been listed in the National Register of Historic Places. The new Bulletin is intended to stimulate even greater interest nationwide in preserving and interpreting historic neighborhoods, including the unprecedented number built since World-War II, and perhaps most significantly, cultivate a richer and more in depth understanding of the broader cultural landscape.

In sum, this Bulletin aims to broaden the public's appreciation of these places as living landscapes whose liveability and quality of design stem as much from their overall spatial organization, circulation networks, and plantings, as from the architectural design of each house.

Further Reading

Clayton, Virginia Tuttle. *The Once and Future Gardener: Garden Writing from the Golden Age of Magazines 1900-1940*. Boston: David R. Godine Publishers, 2000.

Girling, Cynthia, and Kenneth I. Helphand. *Yard—Street—Park: The Design of Suburban Open Space*. New York: John Wiley & Sons, 1994.

Hise, Greg. *Magnetic Los Angeles: Planning the Twentieth Century Metropolis*. Baltimore: Johns Hopkins University Press, 1997.

Jackson, Kenneth T. *Crabgrass Frontier: The Suburbanization of the United States*. New York: Oxford University Press, 1985.

Kelly, Barbara. *Expanding the American Dream: Building and Rebuilding Levittown*. Albany: State University of New York Press, 1993.

Klaus, Susan. *A Modern Arcadia: Frederick Law Olmsted Jr. and the Plan for Forest Hills Gardens*. Amherst: University of Massachusetts Press and Library of American Landscape History, 2001.

Randall, Gregory C. *America's Original G.I. Town: Park Forest, Illinois*. Baltimore: Johns Hopkins University Press, 2000.

Rogers, Millard F. *John Nolen and Mariemont: Building a New Town in Ohio*. Baltimore: Johns Hopkins University Press, 2001.

Stilgoe, John R. *Borderland: Origins of the American Suburb, 1820-1939*. New Haven and London: Yale University Press, 1988.

Worley, William S. *J.C. Nichols and the Shaping of Kansas City*. Columbia: University of Missouri Press, 1990.

Linda Flint McClelland is a Historian with the National Register, History, and Education Program of the National Park Service, Washington, DC. E-mail her at Linda_McClelland@nps.gov.

1869 Plan for Riverside, Illinois, by Frederick Law Olmsted and Calvert Vaux. Reflecting mid-nineteenth century principles of naturalistic landscape design, Riverside is considered the archetypal example of the American curvilinear planned suburb. Plan courtesy F.L. Olmsted National Historic Site. NHL listed 9/1969.



Revealing the Story of Virginius Island: Rehabilitation and Interpretation of an Industrial Landscape

Maureen DeLay Joseph
Perry Carpenter Wheelock
National Park Service

In 1994, the National Park Service (NPS) completed the first phase of the treatment plan from the *Cultural Landscape Report, Virginius Island*. Since the completion of the first phase of work, however, two major floods, which occurred in the winter and fall of 1996, have wrecked havoc on the island. To prevent further deterioration of the landscape, park managers have recently begun to reassess the measures recommended in the 1993 report.

The 1996 floods reaffirmed the need to preserve Virginius Island's sensitive resources by accounting for and incorporating the constant threat of flooding and potential loss in its plan for the repair of the island.

Island's History

During the first half of the nineteenth century, the owners of a small thirteen-acre island took advantage of its proximity to the U.S. Armory at Harpers Ferry, to develop the only privately-owned land in the vicinity with

water-powered mills and industries. The island, which became known as Virginius Island, lies in the Shenandoah River adjacent to the Lower Town area of Harpers Ferry and below the high cliffs of shale formed by the confluence of the Potomac and Shenandoah rivers. The industries established here supported the federal armory operation. In spite of efforts to rebuild the island community during the post-Civil War period, the floods of 1870 and 1889, as well as those that followed, left an indelible mark, eventually destroying the old mills and residences alike. The record flood of 1936 permanently damaged many buildings and brought an end to life on the island leaving only ruins. With each flood event nature began to rapidly reclaim Virginius Island, to bury and to conceal remnants of more than a century of history.

Congress included Virginius Island among the properties for acquisition when they enacted the legislation to create Harpers Ferry National Monument (now Harpers Ferry National Historical Park) in 1944. In the early years, the NPS paid little attention to Virginius Island, where cultural resources mostly lay underground. The NPS treated this naturalized island habitat as a wooded archeological preserve, consisting of mill ru-

ins, remnants of historic waterways, and the foundations of old residential structures.

Almost a century later these ruins were the subject of a project conducted by a team of landscape architects, architects, historians, and archeologists to document the historic resources, prescribe treatment for the remaining features, and improve interpretation of the island's history. The project generated a comprehensive social history, multiple archeological investigations, and a Cultural Landscape Report (CLR).

Treatment Philosophy

As defined in the 1993 Virginius Island CLR, a treatment plan was agreed upon with a primary focus on preserving the island's resources for interpretation while upgrading the roads for pedestrian accessibility. The work neatly reflects one of the four approaches in the Secretary of Interior's Standards - Rehabilitation.

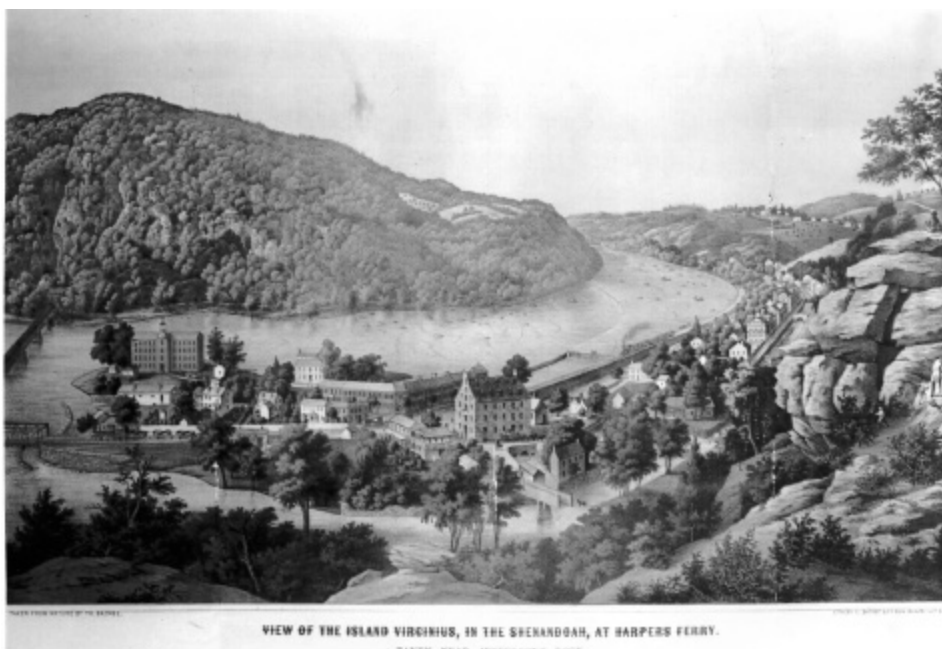
Because of the ruinous state of the remaining features, emphasis was on "reading" the island's signs of change. This was followed by implementing appropriate work, as needed: stabilization and repair of structures that provide tangible historic fabric; vegetation management approaches that better define the residential yards; and re-establishing the remnant road system that links resources.

To accomplish this the team focused on issues related to the structural stabilization and vegetation management. The narrative summary that follows highlights the treatment approach showcased in the new *Cultural Landscape Current*, available on-line at www2.cr.nps.gov/hli/currents.

Ruins Stabilization

On the island structural ruins that are evident range from the spectacular to unim-

This lithograph depicts Virginius Island in its heyday before the Civil War when the island supported a cotton mill, a flour mill, stores and several houses. Circa 1857 by Thomas Sachse, Baltimore. Courtesy Harpers Ferry National Historical Park files.



VIEW OF THE ISLAND VIRGINIUS, IN THE SHENANDOAH, AT HARPERS FERRY.
TAKEN NEAR JEFFERSON'S ROCK.



Standing vacant around the turn of the century, this mill (cotton mill converted to a flour mill) was the longest continuously operated mill on the island. Circa 1904. Courtesy Harpers Ferry National Historical Park files.

posing. The recommendations included the stabilization of prominent walls to removing detrimental vegetation, repointing masonry joints, and adding new capstones to the irregular-shaped ruin walls to prevent further deterioration. The second priority included minimal vegetation removal on residential ruins with only a portion of the foundation visible at grade. For this last group, generally viewed as depressions, some vegetation removal was recommended for portions of the feature to make them more apparent.

Vegetation Management

To assist in the stabilization and interpretation of the landscape and built features on Virginius Island, a program for controlling the vegetation growth was necessary, but had to be balanced with the need to lessen the scouring effect of flood waters. Vegetation control will limit the damage caused by trees and woody shrubs growing on foundations, and by the growth of invasive roots from vines and herbaceous vegetation in the crevices of stone and brick walls. By deterring the growth within a structural remnant and creating a vegetative buffer zone around the feature, the feature is also enhanced for interpretation. There are four prescribed levels of vegetation

management for the island: mowing regularly, clearing woody vegetation, selective thinning and leaving vegetation as is.

Where and how the four levels of vegetation management are implemented is key to interpreting the landscape and structural features. A four-foot mown buffer was recommended around the exterior of all structural remnants. For the interior of buildings, the removal of detrimental woody vegetation and regular control of herbaceous plants to aid in their visibility was suggested. For the island's residential community, an additional level of selective thinning of woody vegetation and establishment of a healthy herbaceous plant groundcover was needed to define historic boundaries of the yards. A limited amount of vista clearing would follow to recapture views and vistas to the Shenandoah River and specific features such as raceways and water holding basins.

Treatment Approach

Even before the CLR was published, Harpers Ferry NHP started to implement the first phase of its treatment plan. The main emphasis of this work was on the stabilization of built features, rehabilitation of historic circulation patterns and control of

vegetation.

A shift in the management of the island's resources occurred after two major floods within eight months in 1996. Due to the destruction caused by the floodwaters, the park's stewards focused their efforts on "stabilizing" the remaining industrial ruins before another freshet destroyed those that remained. The island remained closed to the public for four years after the floods, in order to make it once again accessible to visitors.

What follows is an overview of the *Virginius Island Current* and what was implemented based on the treatment plan and ruins stabilization plan between 1993-1995 and the resultant changes to the plans based on how features responded to the floods of 1996.

Before the Floods of 1996

Ruins Stabilization

Harpers Ferry NHP sought the expertise from the Historic Preservation Training Center (HPTC), a park service affiliate, to develop a Ruins Assessment and Stabilization Plan for the most prominent ruins. The project was initiated with a plan for the cotton/flour mill. The historic preservation approach emphasized the need to re-establish the appearance of lost mill features that also function to stabilize the structure during times of high water. The project utilized original stone material from the mills collapsed walls in the immediate project area in order to reload critical walls that were vulnerable during high water. Availability of original stone masonry, replication of construction details, mortar color and texture, and historic craftsmanship were key elements for re-establishing the foundation walls of the cotton/flour mill structure. Two phases of the cotton/flour mill stabilization plan were completed before the 1996 floods. Several other key structures were also assessed at this time. The report recorded the condition of the ruins affected by "micro" hydrologic patterns, vegetative growth, and masonry deterioration.

Virginius Island

continued from previous page 13

Pedestrian Trails

The re-establishment of historic circulation patterns was undertaken to connect the physical remnants and aid in interpreting the history of the island to a broader public. Efforts here focused on rerouting the existing, deteriorated, and non-functional trail system. Park trails either ran haphazardly over and through structural ruins, or followed closely along the Shenandoah River shoreline. This posed a major concern to park stewards, because visitor use of the trails accelerated the deterioration of the ruins. By re-establishing some of the historic patterns, the impact on the structural ruins would be lessened. Based on historical mapping, photographs, and archeological investigations, maintenance staff reestablished the only named road on the island, Wernwag Street. The reinstated road connected to a new pedestrian bridge (Hamilton Street Bridge) that crossed over the outlet for the Shenandoah Canal channel to physically link Virginius Island with Lower Town Harpers Ferry community.

Vegetation Management

The last major component of the implementation plan was vegetation management. Re-vegetation zones were defined for areas that were previously disturbed by past activity and included abandoned trails, construction sites and archeological sites. Staff and volunteers, revegetated these areas with a native riparian plant palette of trees and shrubs, and seeded them with a native mixture of annual and perennial grasses.

Attention was initially focused on domestic sites with prescribed mowing zones around extant ruins and tree thinning of the yards. For other areas, woody and herbaceous vegetation was removed off of the structural ruins where it was deemed detrimental to the structure. In a few areas, significant viewsheds were recaptured.

After the Floods of 1996

Ruins Stabilization

By the end of 1996, a Flood/Storm Recovery Program was instituted throughout

The surviving ruins of the cotton/flour mill were the focus of the first stabilization project. 2001. Courtesy NPS files.



the park with special emphasis placed on safeguarding the island's ruins. One of the most significant shifts in the park's management was the methodology behind ruin stabilization. Based on the initial assessment, the walls that resisted and withstood the impact loads of the floodwaters appeared to be the ones that had recently been repointed and reloaded with coping stones. Based on the sustainability of this recent stabilization project, it was determined that all surviving historic fabric should be built-up to the same level or order to protect and safeguard vulnerable historic fabric. Although the new work protects and stabilizes the resources, it does result in a loss of the patina to the historic brick and stone surfaces. One of the major outcomes to this course of action is that the authenticity of the "ruin" is in question because of the amount of new material added.

Pedestrian Trails and Vegetation Management

Since the island was closed to the public from 1996 to 2000, little was done to the trail system. Several elements of the original implemented design are being reassessed.

The two floods brought down hundreds of mature trees and changed the enclosed character of the island, especially in the residential core. Today, this area is now more open and undulating where the uprooted trees left depressions.

Other than the regular grass mowing near the Shenandoah canal bridge, the maintenance crews have spent most of their efforts on clean up of storm debris. Once the stabi-

lization of the industrial structures is completed in the next few years, the hope is to resume with vegetation management around the ruins and in the yards.

Conclusion

The Virginius Island *Current* presents a preservation treatment approach. This philosophy adheres to the park's primary mission and follows the Secretary of Interior's Standards for Preservation. While the Standards outline a full range of options from stabilization to reconstruction, the decisions made here reflect the importance of and sensitivity to the unique stone and brick ruins that characterize its landscape.

When the last residents left the island in the 1936, nature reclaimed the abandoned landscape, leaving behind only remnants of the past. Even though time has weathered the stone and brick, through research, preservation and interpretation, the National Park Service has uncovered a rich history of an island forgotten.

Maureen DeLay Joseph is the Regional Historical Landscape Architect for the National Capital Region of the National Park Service. Perry Carpenter Wheelock is the Cultural Resource Manager of Rock Creek Park, Washington, DC.

Call for Papers

The Fourth National Forum on Historic Preservation Practice: A Critical Look at Cultural Landscapes and Historic Preservation

Historic preservation is an evolving interdisciplinary endeavor bringing together different perceptions, approaches and methods to address some of the critical cultural and environmental issues of our nation. In a series of National Forums held at Goucher College since 1997, a consortium of preservation programs at colleges and universities, the National Park Service, and the Historic Resources Committee of the American Institute of Architects have focused on changing perspectives of historic significance and integrity and on the evolving role of design in historic preservation.

The major purpose of the Forum is to bring together persons from a variety of backgrounds to exchange ideas. These include anthropologists, archeologists, architects, cultural and historical geographers, folklorists, historians of landscape and landscape architecture, historic preservationists, natural scientists, natural resource managers, and social and urban historians working in academic institutions, government preservation offices, non-profit institutions, and private practice. To facilitate dialogue, the conference will be limited to single sessions, held over a two-day period with evenings reserved for informal exchange.

The Fourth National Forum, to be held in **March 2004**, will explore the challenges that preservation faces in documenting, assessing, and protecting America's changing cultural landscapes. The concept of cultural landscapes is relatively new to the preservation field and is often misunderstood. For purposes of the Forum, cultural landscapes is defined as any environment that has been shaped or modified by human beings and thus encompasses all types of settings affected by all peoples.

Cultural landscapes also entail an understanding of the dynamic interaction of natural and human-made components of landscapes that changes over time. This complex, diverse, and changing nature of cultural landscapes is often seen to be at odds with the more traditional notions of historic

preservation, which typically seek to advance harmony, compatibility as well as maintain a particular period of history.

Proposed papers may address any topic pertaining to the understanding the role of cultural landscapes and historic preservation. Among the many topics that may be developed are:

- *How the emerging discipline of cultural landscapes should be understood and appreciated by public officials and the general public.*
- *New perspectives on researching, documenting, or evaluating cultural landscapes, including new tools and techniques useful in the decision making process.*
- *Innovative approaches to listing or land-marking changing cultural landscapes.*
- *Understanding conflicts and commonality in approaches to managing cultural and natural resources within a cultural landscape.*
- *How diverse values of different cultural groups associated with a cultural landscape can be incorporated in its preservation and change.*

While the focus of the Forums is on preservation practice in the United States, papers may address other parts of the world for comparative purposes or in ways that brings domestic practices and issues to the fore. Papers should be analytical rather than descriptive in nature. They should address emerging issues in historic preservation and cultural landscapes, not simply be case studies; that is they should address the why, not the how. Papers should focus on new material that brings fresh information and/or insight to identifying, understanding, interpreting and preserving cultural landscapes.

Abstracts should be between 300 and 500 words and must be submitted no later than **February 28, 2003**. Abstracts should contain the author's name(s), postal and

e-mail addresses, telephone and fax numbers at the top of the page. Papers will be selected based on how well they address the focus the conference, thoughtfulness, and organization. The selection committee reserves the right to request modifications to proposals.

Authors will be notified by **April 25, 2003** whether or not their proposed paper has been selected. Complete drafts of papers, 10 to 12 papers in length, will be due on **September 1, 2003**, for review by the selection committee. The committee reserves the right to request modifications to the drafts. Final papers, to be made available to attendees at the conference, will be due on **January 15, 2004**. It is the intention of the committee to publish revised and expanded papers in a proceedings after the conference.

The historic preservation departments of Boston University, Columbia University, George Washington University, Goucher College, University of Cincinnati, University of Delaware, University of Kentucky, University of Minnesota, University of Oregon, University of Southern California, along with the Historic Resources Committee of the American Institute of Architects, the Historic Preservation Professional Interest Group of the American Society of Landscape Architects, the National Park Service's Historic Landscape Initiative and Cultural Landscapes Program, sponsor the Fourth National Forum on Historic Preservation Practice.

Abstracts and any inquiries should be sent to: David L. Ames, Conference Coordinator, and Director of the Center for Historic Architecture and Design, University of Delaware, Newark, DE 19716; 302-831-1050, FAX 302-831-4548, davames@udel.edu. Abstracts may be submitted electronically or in hard copy.

Forthcoming Historic Landscape Symposium Developed by the National Park Service Historic Landscape Initiative

Save the date for:

Mission Impossible: Can Historic Properties Embrace a Landscape Continuum?

Gunston Hall, Mason Neck, VA

Friday, July 11, 2003—9:00 a.m. to 4:30 p.m.

Optional tour on Saturday, July 12

Today, as historic preservation professionals we are asked in the *Secretary of the Interior's Standards for the Treatment of Historic Properties* to "never create a property that has not existed in time." As a result, sites charged with their own institutional missions to interpret a "Person," an "Event," or an "Era" have difficult management decisions to make. This symposium will explore the myriad of challenges associated with this stewardship dilemma. Symposium goals will consider where, when, and how historic properties can broaden their period of significance and interpretation to ensure the preservation of important later landscape features. Symposium co-sponsored by Gunston Hall, the National Park Service Historic Landscape Initiative and the Cultural Landscape Foundation with support from the Garden Club of Virginia. Optional tours to area historic landscapes will be offered on Saturday, July 12.

Advanced registration is required. For additional information contact the Education Department at Gunston Hall at 703-550-9220 for a reservation form. Registration is \$95; \$80 for Friends of Gunston Hall.

Purchase "Making Educated Decisions"

Making Educated Decisions: A Landscape Preservation Bibliography. Edited by Charles A. Birnbaum, FASLA, and Heather Barrett. A valuable resource to anyone involved with preservation planning and stewardship of significant landscapes.

667 annotated citations from 48 American states and 27 countries. 170 pages.

30 illustrations. 2000. GPO stock number: 024-005-01206-1. To order, call

202-512-1800. \$12.00 per copy.

Do you have a friend or colleague who would like to receive Vineyard?

Send name, address, phone, and e-mail to Historic Landscape Initiative, Heritage Preservation Services, Preservation Initiatives, National Park Service, 1849 C Street, NW, (2255), Washington, DC, 20240 or e-mail Vineyard@nps.gov.