



## CARD A Pain Relievers


**1**



**Darvocet-N<sup>®</sup>**




**Darvon<sup>®</sup>**




**Tylenol<sup>®</sup> with Codeine**


**2**



**Percocet<sup>®</sup>**




**Percodan<sup>®</sup>**




**Tylox<sup>®</sup>**


**3**



**Vicodin<sup>®</sup>**




**Lortab<sup>®</sup>**



**Lorcet<sup>®</sup>/Lorcet Plus<sup>®</sup>**

**4**



**Codeine**

**9**



**Hydrocodone**

**14**



**Propoxyphene**

**5**



**Demerol<sup>®</sup>**

**10**



**Methadone**

**15**



**SK-65<sup>®</sup>**

**6**



**Dilaudid<sup>®</sup>**

**11**



**Morphine**

**16**

**Stadol<sup>®</sup>**

**7**



**Fioricet<sup>®</sup>**

**12**



**OxyContin<sup>®</sup>**

**17**



**Talacen<sup>®</sup>**

**8**



**Fiorinal<sup>®</sup>**

**13**



**Phenaphen<sup>®</sup> with Codeine**

**18**



**Talwin<sup>®</sup>**

**19**



**Talwin<sup>®</sup> NX**

**20**

**Tramadol**

**21**




**Ultram<sup>®</sup>**

# CARD B

## Tranquilizers

**1**



**Klonopin®**

**Clonazepam**

**2**



**Xanax®**

**Alprazolam**

**Ativan®**

**Lorazepam**

**3**



**Valium®**

**Diazepam**

**4**



**Atarax®**

**8**



**Librium®**

**13**



**Serax®**

**5**



**BuSpar®**

**9**



**Limbital®**

**14**



**Soma®**

**6**



**Equanil®**

**10**



**Meprobamate**

**15**



**Tranxene®**

**7**



**Flexeril®**

**11**



**Miltown®**

**16**



**Vistaril®**

**12**



**Rohypnol®**

## CARD C Stimulants

1

(picture not available)  
**Methamphetamine**  
("speed" or "ice" or  
"crank")



**Desoxyn®**

(picture not available)  
**Methedrine**

2

### Amphetamines



**Benzedrine®**



**Biphentamine®**



**Fastin®**



**Phentermine**

3



**Ritalin®**



**Methylphenidate**

4



**Cylert®**

8



**Eskatrol®**

12



**Plegine®**

5



**Dexedrine®**

9



**Ionamin®**

13



**Preludin®**

6 **Dextroamphetamine**

10



**Mazanor®**

14



**Sanorex®**

7

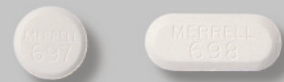


**Didrex®**

11

**Obedrin-LA®**

15



**Tenuate®**

## CARD D Sedatives

1

(picture not available)  
**Methaqualone**  
(includes Sopor®,  
Quaalude®)

2



**Nembutal® Sodium**

(picture not available)  
**Pentobarbital**



**Seconal®**

(picture not available)  
**Secobarbital**

(picture not available)  
**Butalbital**

3



**Restoril®**



**Temazepam**

4



**Amytal®**

7



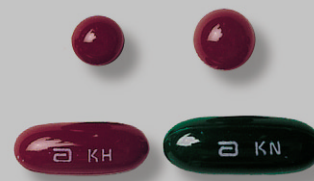
**Dalmane®**

8



**Halcion®**

10



**Placidyl®**

5



**Butisol®**

6

**Chloral Hydrate**

9



**Phenobarbital**

11



**Tuinal®**