

**Estimated Cases of Alzheimer's Disease and Mixed Dementia in VA Patient Population
All Levels of Severity**

FY 2002

Ages	Middle	Total Low	High
65-84	66,416	53,319	78,847
85+	24,205	18,450	29,388
Total	90,621	71,769	108,235

FY 2003

Ages	Middle	Total Low	High
65-84	71,137	57,109	84,452
85+	32,701	24,927	39,704
Total	103,838	82,036	124,156

FY 2004

Ages	Middle	Total Low	High
65-84	72,880	58,508	86,520
85+	40,896	31,173	49,653
Total	113,775	89,681	136,174

FY 2005

Ages	Middle	Total Low	High
65-84	70,591	56,671	83,804
85+	48,167	36,716	58,482
Total	118,758	93,386	142,286

FY 2006

Ages	Middle	Total Low	High
65-84	70,909	56,926	84,180
85+	57,249	43,638	69,509
Total	128,157	100,564	153,689

FY 2007

Ages	Middle	Total Low	High
65-84	71,028	57,022	84,323
85+	66,730	50,865	81,020
Total	137,758	107,887	165,343

FY 2008

Ages	Middle	Total Low	High
65-84	71,538	57,431	84,927
85+	74,697	56,938	90,694
Total	146,235	114,369	175,621

FY 2009

Ages	Middle	Total Low	High
65-84	71,986	57,791	85,460
85+	81,636	62,227	99,119
Total	153,622	120,018	184,578

FY 2010

Ages	Middle	Total Low	High
65-84	72,493	58,198	86,062
85+	87,850	66,964	106,663
Total	160,343	125,161	192,724

FY 2011

Ages	Middle	Total Low	High
65-84	73,216	58,778	86,920
85+	92,183	70,267	111,924
Total	165,399	129,045	198,844

FY 2012

Ages	Middle	Total Low	High
65-84	76,351	61,295	90,642
85+	95,016	72,426	115,364
Total	171,367	133,721	206,006

FY 2013

Ages	Middle	Total Low	High
65-84	79,659	63,951	94,569
85+	96,765	73,760	117,487
Total	176,424	137,710	212,057

FY 2014

Ages	Middle	Total Low	High
65-84	82,419	66,166	97,845
85+	96,063	73,224	116,635
Total	178,482	139,390	214,480

FY 2015

Ages	Middle	Total Low	High
65-84	84,247	67,634	100,015
85+	96,072	73,231	116,646
Total	180,319	140,865	216,661

FY 2016

Ages	Middle	Total Low	High
65-84	84,777	68,059	100,645
85+	96,473	73,537	117,133
Total	181,250	141,596	217,778

FY 2017

Ages	Middle	Total Low	High
65-84	84,755	68,041	100,618
85+	96,692	73,704	117,399
Total	181,447	141,745	218,017

FY 2018

Ages	Middle	Total Low	High
65-84	84,705	68,001	100,559
85+	96,570	73,611	117,251
Total	181,274	141,612	217,809

FY 2019

Ages	Middle	Total Low	High
65-84	84,482	67,823	100,295
85+	95,075	72,472	115,436
Total	179,558	140,294	215,731

FY 2020

Ages	Middle	Total Low	High
65-84	84,368	67,731	100,159
85+	93,063	70,938	112,993
Total	177,431	138,669	213,152

FY 2021

Ages	Middle	Total Low	High
65-84	84,415	67,768	100,214
85+	89,931	68,550	109,189
Total	174,345	136,318	209,404

FY 2022

Ages	Middle	Total Low	High
65-84	84,362	67,726	100,152
85+	86,998	66,315	105,629
Total	171,360	134,041	205,781

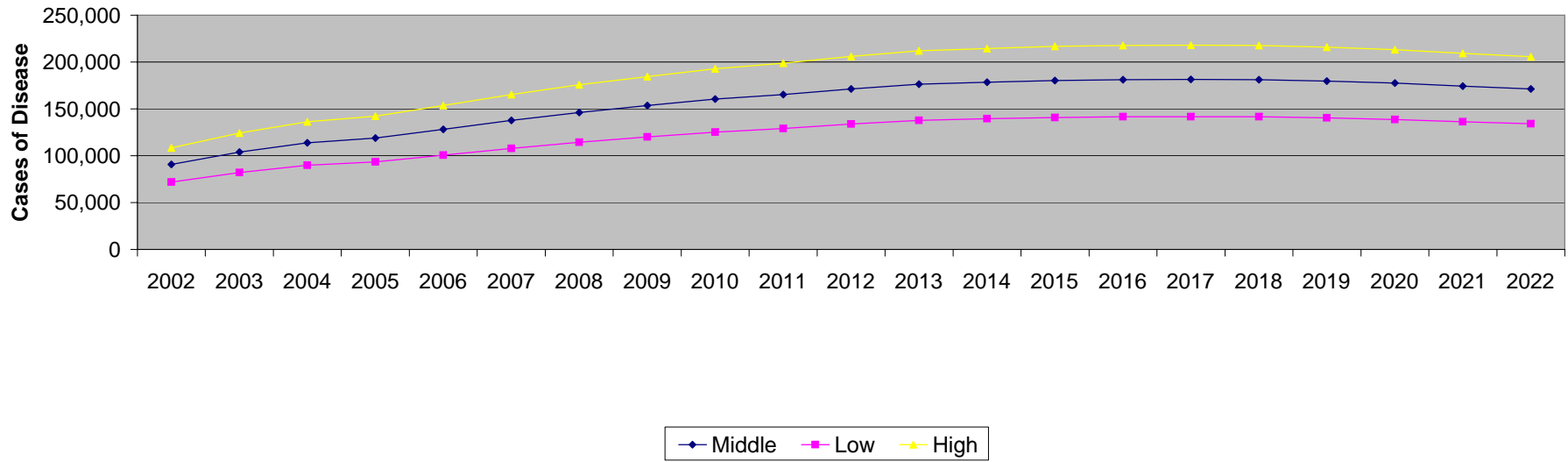
Estimated Cases of Dementia in VA Patient Population

Total Cases (Males + Females)

All Levels of Severity

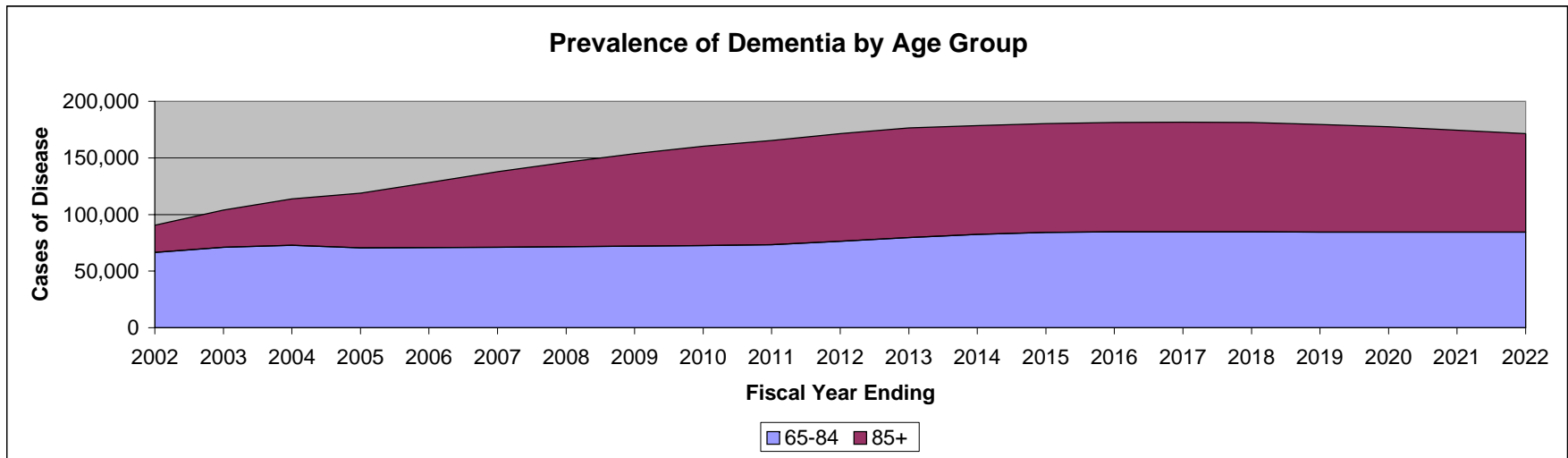
	2002	2003	2004	2005	2006	2007	2008	2009	2010	2011	2012	2013	2014	2015	2016	2017	2018	2019	2020	2021	2022
Middle	90,621	103,838	113,775	118,758	128,157	137,758	146,235	153,622	160,343	165,399	171,367	176,424	178,482	180,319	181,250	181,447	181,274	179,558	177,431	174,345	171,360
Low	71,769	82,036	89,681	93,386	100,564	107,887	114,369	120,018	125,161	129,045	133,721	137,710	139,390	140,865	141,596	141,745	141,612	140,294	138,669	136,318	134,041
High	108,235	124,156	136,174	142,286	153,689	165,343	175,621	184,578	192,724	198,844	206,006	212,057	214,480	216,661	217,778	218,017	217,809	215,731	213,152	209,404	205,781

Prevalence of Dementia by Rate



Estimated Cases of Dementia in VA Patient Population
Middle (Point Estimate) Projection
All Levels of Severity

	2002	2003	2004	2005	2006	2007	2008	2009	2010	2011	2012	2013	2014	2015	2016	2017	2018	2019	2020	2021	2022
65-84	66,416	71,137	72,880	70,591	70,909	71,028	71,538	71,986	72,493	73,216	76,351	79,659	82,419	84,247	84,777	84,755	84,705	84,482	84,368	84,415	84,362
85+	24,205	32,701	40,896	48,167	57,249	66,730	74,697	81,636	87,850	92,183	95,016	96,765	96,063	96,072	96,473	96,692	96,570	95,075	93,063	89,931	86,998



**Estimated Incident Cases of Alzheimer's Disease in VA Patient Population
All Levels of Severity**

FY 2002

Ages	Middle	Total Low	High
65-84	24,931	14,441	38,372
85+	6,854	3,401	11,610
Total	31,784	17,843	49,982

FY 2003

Ages	Middle	Total Low	High
65-84	26,703	15,468	41,100
85+	9,259	4,595	15,685
Total	35,962	20,063	56,785

FY 2004

Ages	Middle	Total Low	High
65-84	27,357	15,847	42,106
85+	11,580	5,747	19,615
Total	38,936	21,593	61,722

FY 2005

Ages	Middle	Total Low	High
65-84	26,498	15,349	40,784
85+	13,639	6,769	23,103
Total	40,136	22,118	63,887

FY 2006

Ages	Middle	Total Low	High
65-84	26,617	15,418	40,968
85+	16,210	8,045	27,459
Total	42,827	23,463	68,427

FY 2007

Ages	Middle	Total Low	High
65-84	26,662	15,444	41,037
85+	18,895	9,377	32,007
Total	45,557	24,821	73,044

FY 2008

Ages	Middle	Total Low	High
65-84	26,853	15,555	41,331
85+	21,151	10,497	35,828
Total	48,004	26,052	77,159

FY 2009

Ages	Middle	Total Low	High
65-84	27,021	15,652	41,590
85+	23,115	11,472	39,156
Total	50,137	27,124	80,746

FY 2010

Ages	Middle	Total Low	High
65-84	27,212	15,763	41,883
85+	24,875	12,345	42,136
Total	52,086	28,108	84,020

FY 2011

Ages	Middle	Total Low	High
65-84	27,483	15,920	42,301
85+	26,102	12,954	44,215
Total	53,585	28,874	86,516

FY 2012

Ages	Middle	Total Low	High
65-84	28,660	16,602	44,112
85+	26,904	13,352	45,574
Total	55,564	29,954	89,686

FY 2013

Ages	Middle	Total Low	High
65-84	29,902	17,321	46,024
85+	27,399	13,598	46,413
Total	57,301	30,919	92,436

FY 2014

Ages	Middle	Total Low	High
65-84	30,938	17,921	47,618
85+	27,200	13,499	46,076
Total	58,138	31,420	93,694

FY 2015

Ages	Middle	Total Low	High
65-84	31,624	18,318	48,674
85+	27,203	13,500	46,080
Total	58,827	31,819	94,754

FY 2016

Ages	Middle	Total Low	High
65-84	31,823	18,434	48,980
85+	27,316	13,557	46,272
Total	59,139	31,990	95,253

FY 2017

Ages	Middle	Total Low	High
65-84	31,814	18,429	48,967
85+	27,378	13,588	46,378
Total	59,193	32,016	95,345

FY 2018

Ages	Middle	Total Low	High
65-84	31,796	18,418	48,938
85+	27,344	13,570	46,319
Total	59,139	31,988	95,257

FY 2019

Ages	Middle	Total Low	High
65-84	31,712	18,369	48,810
85+	26,921	13,360	45,602
Total	58,633	31,730	94,412

FY 2020

Ages	Middle	Total Low	High
65-84	31,669	18,345	48,744
85+	26,351	13,078	44,637
Total	58,020	31,422	93,381

FY 2021

Ages	Middle	Total Low	High
65-84	31,687	18,355	48,771
85+	25,464	12,637	43,134
Total	57,151	30,992	91,905

FY 2022

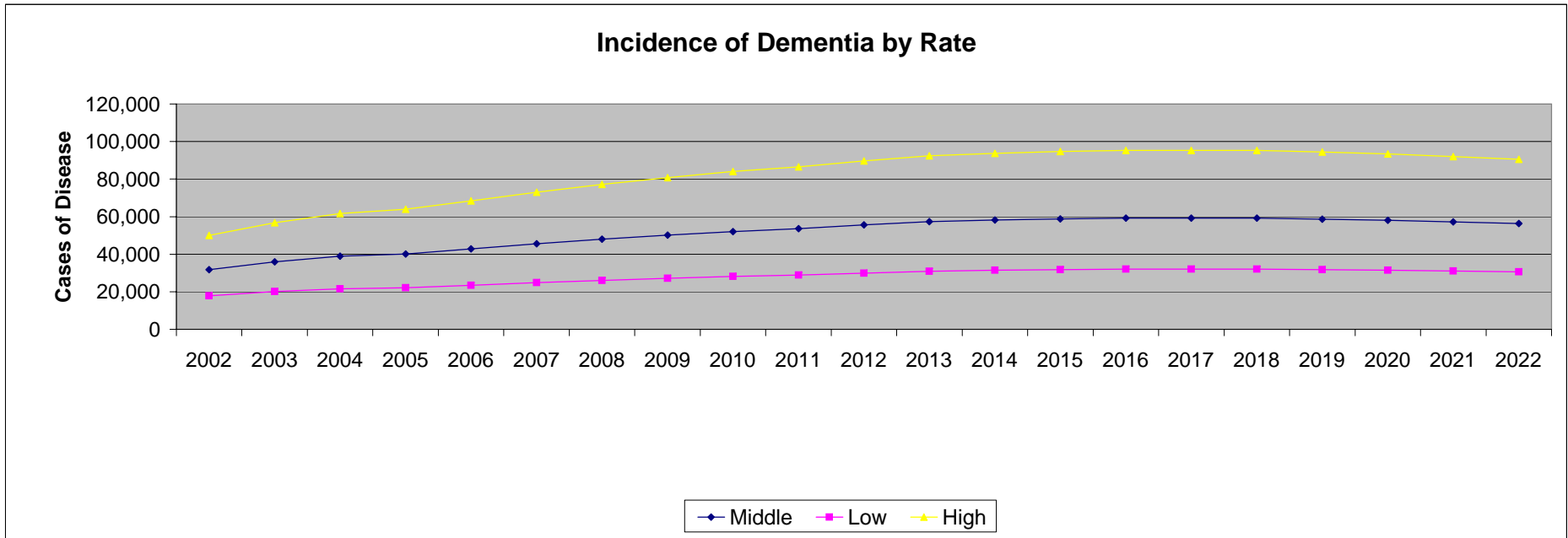
Ages	Middle	Total Low	High
65-84	31,667	18,343	48,741
85+	24,633	12,225	41,728
Total	56,301	30,569	90,469

Estimated Incident Cases of Dementia in VA Patient Population

Total Cases (Males + Females)

All Levels of Severity

	2002	2003	2004	2005	2006	2007	2008	2009	2010	2011	2012	2013	2014	2015	2016	2017	2018	2019	2020	2021	2022
Middle	31,784	35,962	38,936	40,136	42,827	45,557	48,004	50,137	52,086	53,585	55,564	57,301	58,138	58,827	59,139	59,193	59,139	58,633	58,020	57,151	56,301
Low	17,843	20,063	21,593	22,118	23,463	24,821	26,052	27,124	28,108	28,874	29,954	30,919	31,420	31,819	31,990	32,016	31,988	31,730	31,422	30,992	30,569
High	49,982	56,785	61,722	63,887	68,427	73,044	77,159	80,746	84,020	86,516	89,686	92,436	93,694	94,754	95,253	95,345	95,257	94,412	93,381	91,905	90,469



**Estimated Incident Cases of Dementia in VA Patient Population
Middle (Point Estimate) Projection
All Levels of Severity**

	2002	2003	2004	2005	2006	2007	2008	2009	2010	2011	2012	2013	2014	2015	2016	2017	2018	2019	2020	2021	2022
65-84	24,931	26,703	27,357	26,498	26,617	26,662	26,853	27,021	27,212	27,483	28,660	29,902	30,938	31,624	31,823	31,814	31,796	31,712	31,669	31,687	31,667
85+	6,854	9,259	11,580	13,639	16,210	18,895	21,151	23,115	24,875	26,102	26,904	27,399	27,200	27,203	27,316	27,378	27,344	26,921	26,351	25,464	24,633

