

Reprojecting Shapefiles in ArcView 3.3

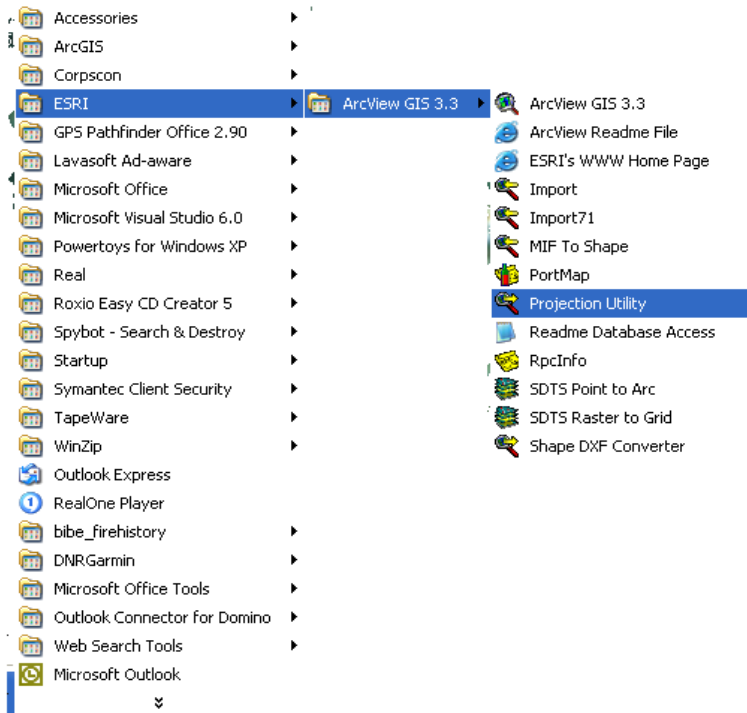
Step-by-Step instructions for reprojecting shapefiles using ArcView 3.3.

Step 1

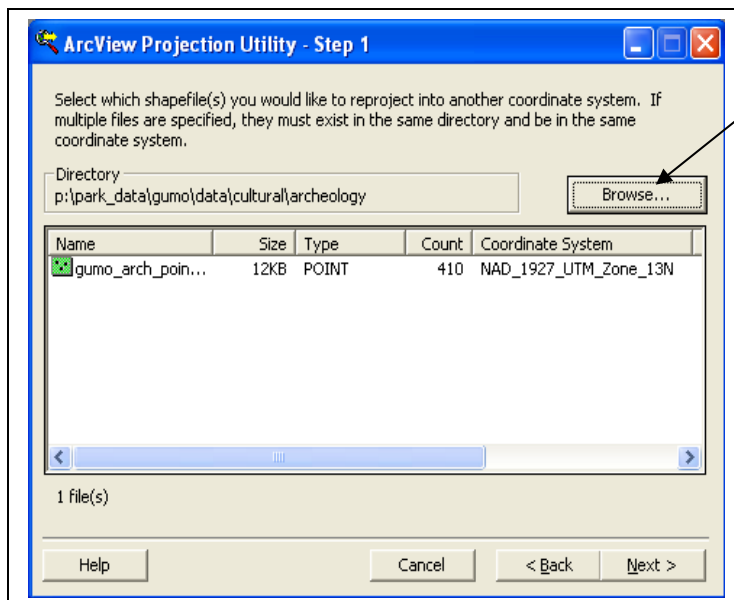
Start the Projection Utility outside of ArcView.

Programs→ESRI→ArcView GIS 3.3→Projection Utility

Note: Do not launch the Projection Utility from within ArcView 3.3. The utility is more likely to error while running.



Step 2



Use this button to **BROWSE** to the shapefile(s) to reproject.

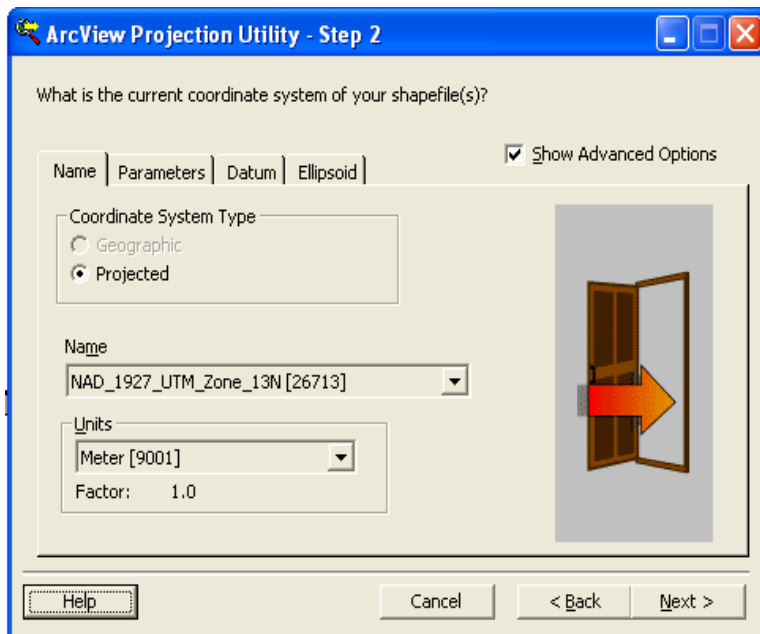
If the shapefile has a projection file (*.prj) then the **Coordinate System** will be display. If there is no *.prj file it will read UNKNOWN.

**Note: If you are reprojecting multiple file they all have to be in the same coordinate system and same directory!!!!

Step 3

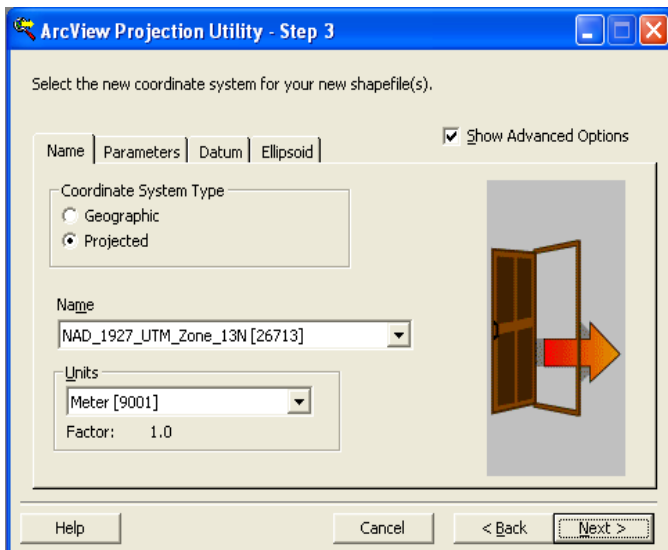
Use this dialog to indicate the coordinate system information for the shapefile(s) you chose in the previous panel. Notice this dialog box's picture has the arrow still to the left of the door frame. The values for these fields are read from the shapefiles' *.prj (projection) file, if present. You can not change these values if your shapefile(s) have a *.prj file. If no *.prj exists, default values are shown and you'll need to enter the values that represent the coordinate system information for your shapefiles.

**If the shapefile(s) you've chosen to project are not in the same coordinate system, you will get a warning. You'll need to choose shapefile(s) which share a common coordinate system before you'll be able to go on to the next step.



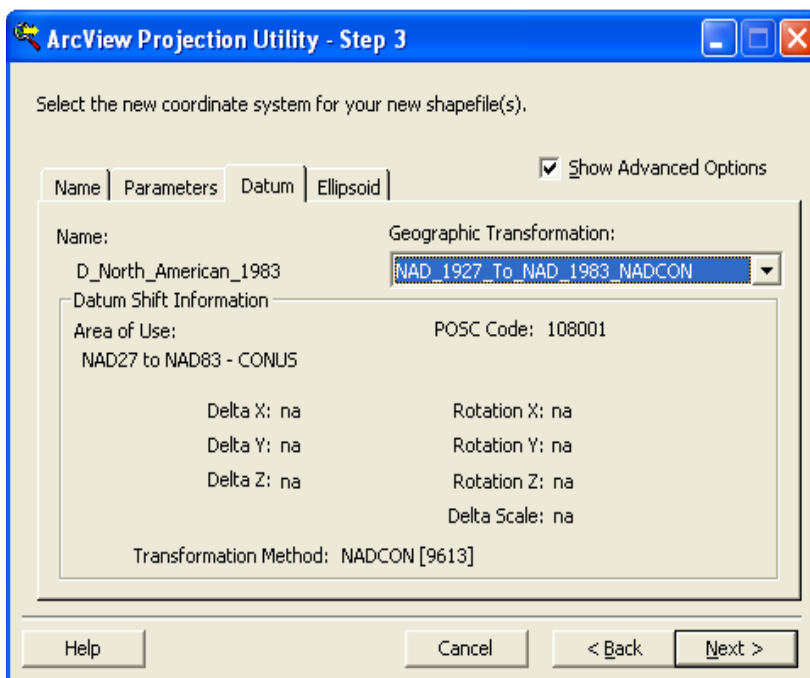
Step 4

Use this dialog to indicate the new coordinate system information for the shapefile(s) you chose in the previous dialog. Notice that in this dialog box's picture, the arrow has moved through the door frame to the right. Click on the check box for "Show Advanced Options" in the upper right corner. Go to the next step before dismissing this dialog box.



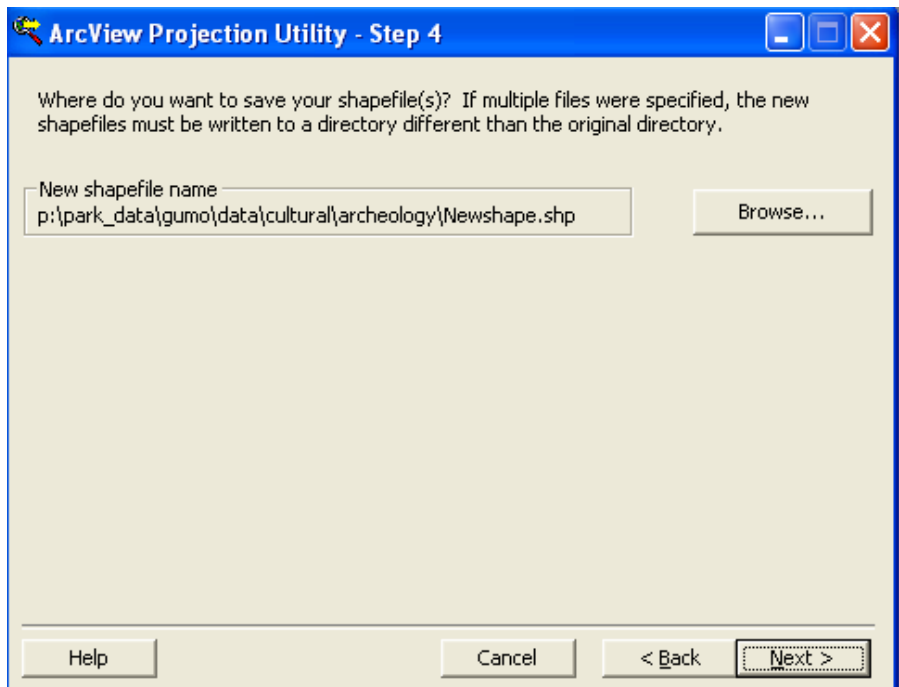
Step 5

If you are projecting between NAD27 and NAD83 (either direction) make sure to set the proper transformation method. Go to the DATUM tab and choose "Nad_1927_to_NAD1983_NADCON" for the Geographic Transformation.



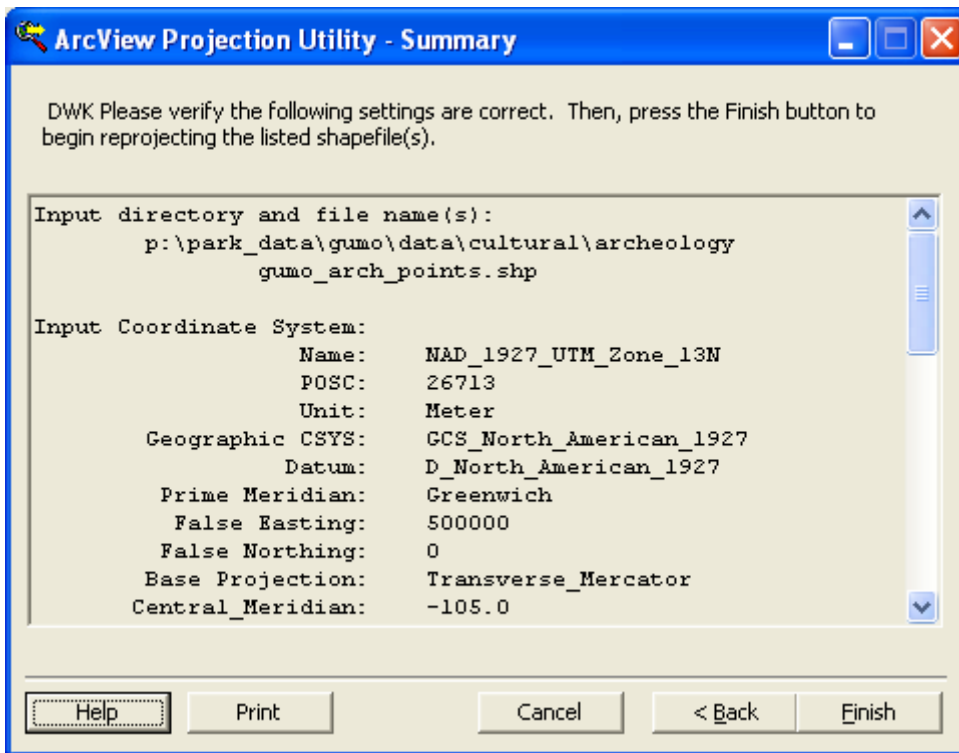
Step 6

Use this dialog to specify a name and/or a location for the projected shapefile(s). The current working directory is shown in the “New shapefile name” field. Hit the **BROWSE** button to change it.



Step 7

Use this dialog to review the settings. The names of the shapefile(s) to be projected or reprojected are shown, as well as the input and output projection parameters, and the file name(s) and location. If multiple input files are shown, the order is controlled by the operating system (they may not be in alphabetical order).



Step 8

Add the new shapefile to your ArcView View.