

State of Kansas

Draft

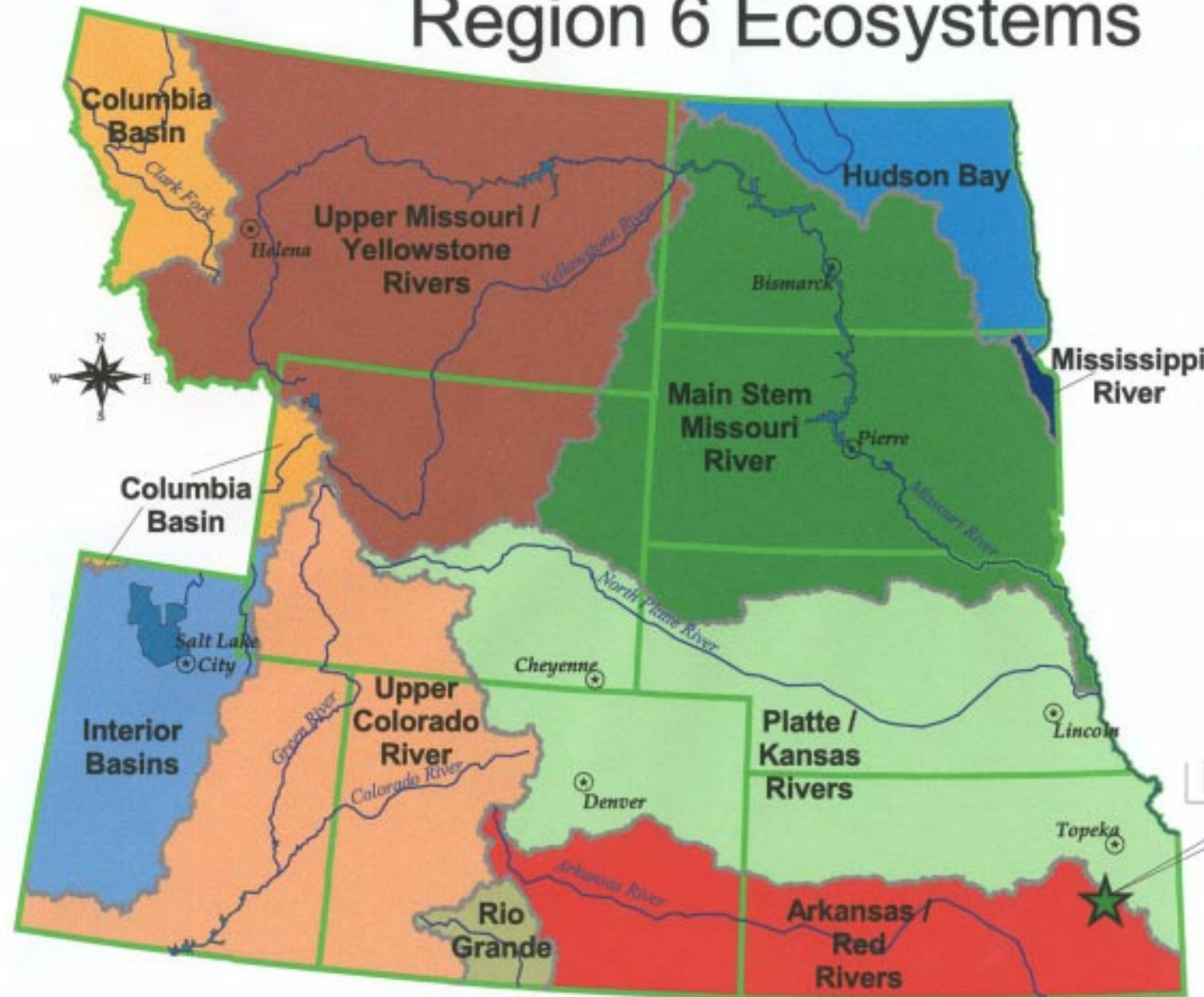


0 50 100 150 Miles

Map # 1 Vicinity Map

Region 6 Ecosystems

Draft

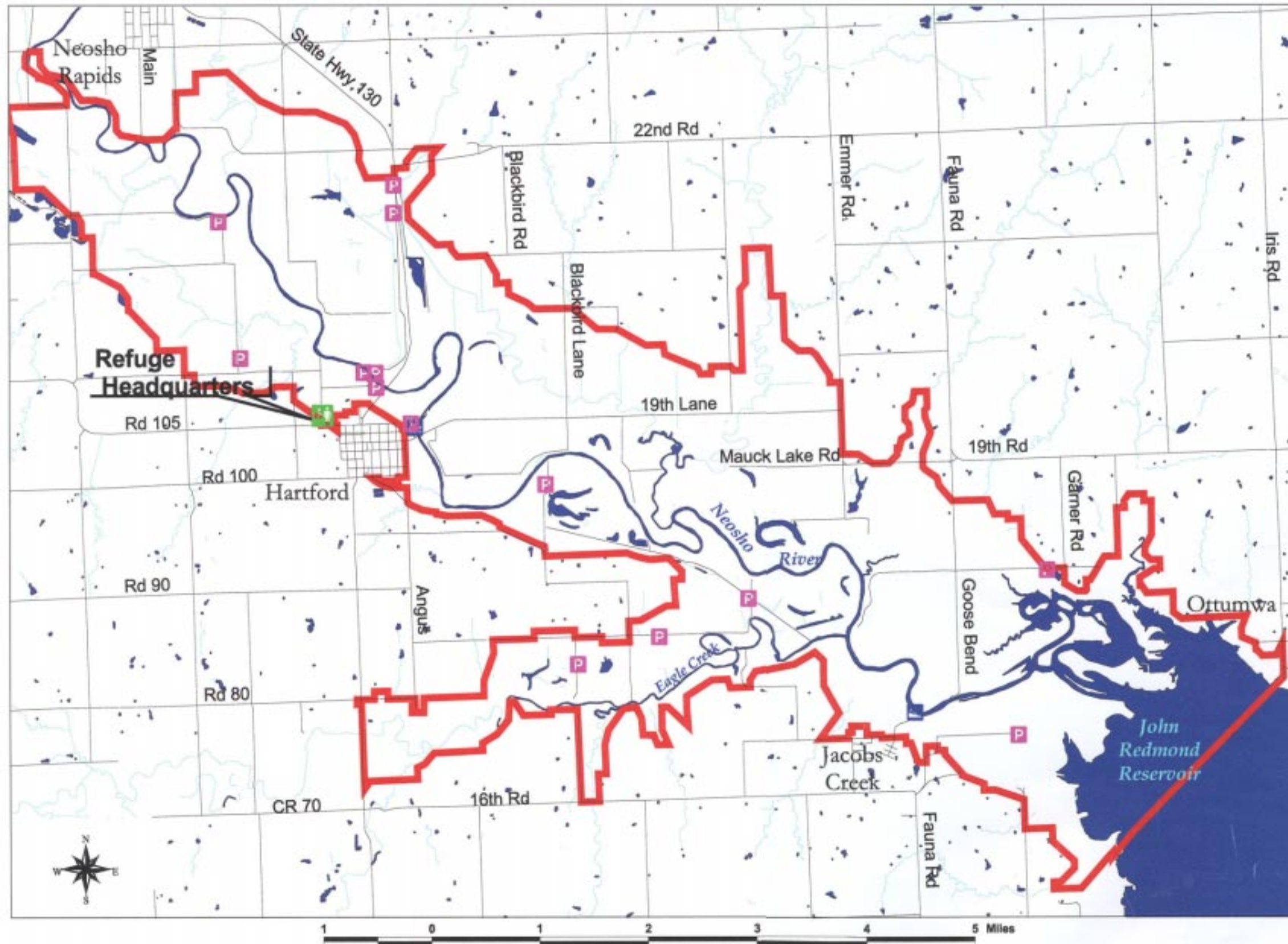


Map #2 Ecoregion Map





Flint Hills National Wildlife Refuge

Coffey and Lyon Counties, Kansas

Draft



Legend

-  Refuge Boundary
-  Parking Area
-  Boat Ramp
-  Refuge Headquarters

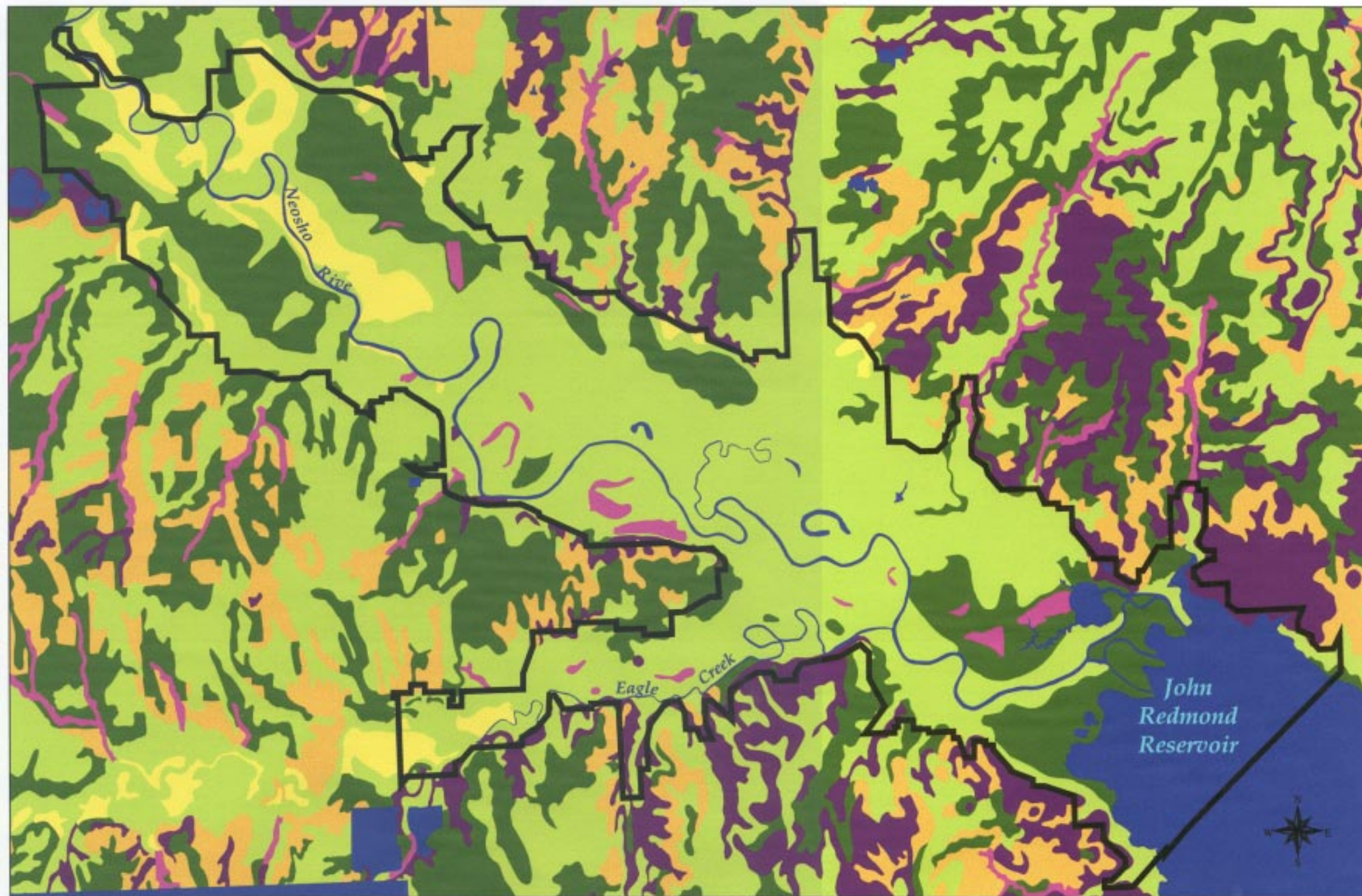


Map # 3 Base Map

Soils of Flint Hills NWR

Coffey and Lyon Counties, Kansas

Draft



Legend

Soil Capability Classes

- I - Few or No Hazards
- II
- III
- IV
- V
- VI - Severe Hazards

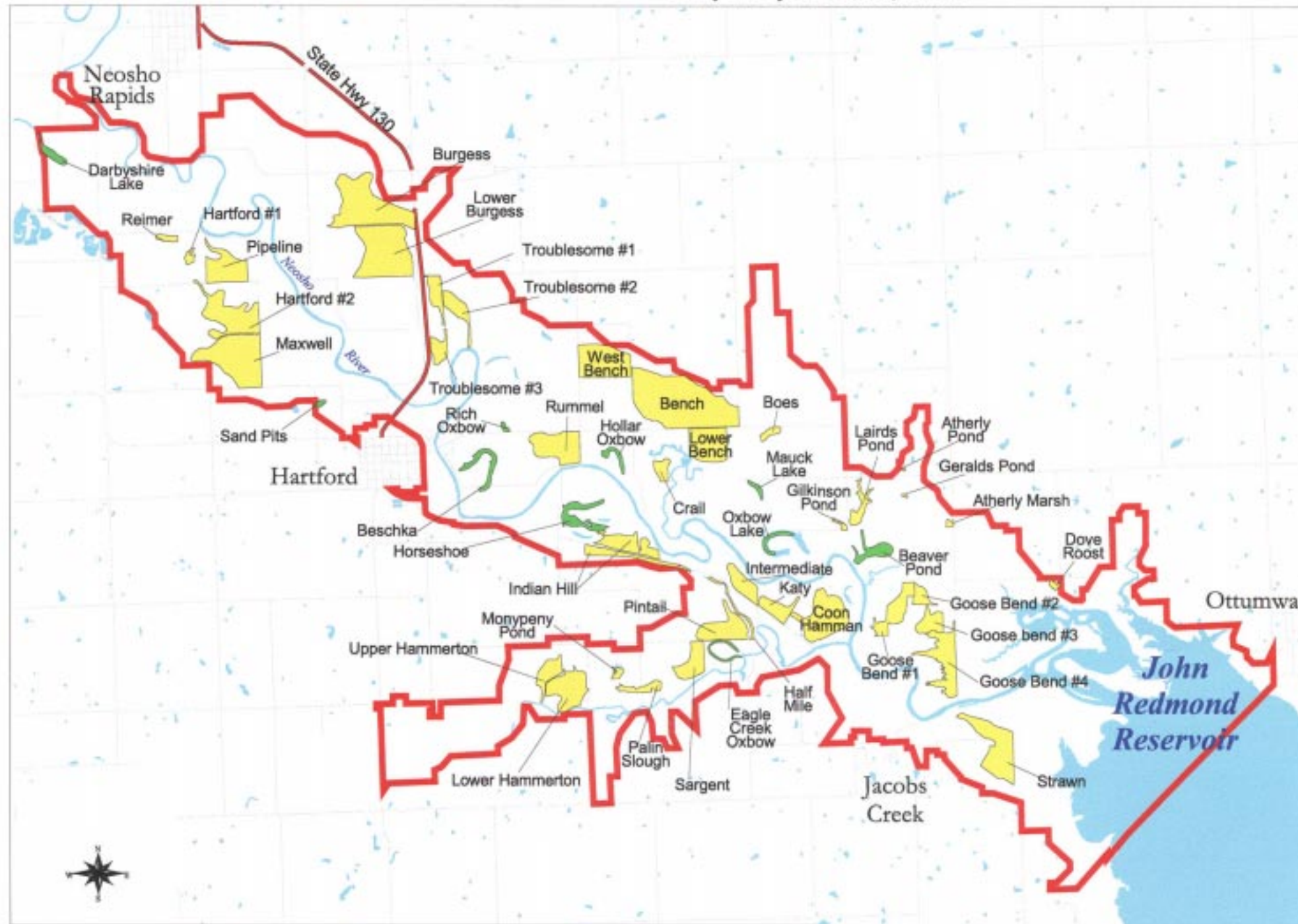
1 0 1 2 3 4 5 Miles

Map # 4 Soils Map

Wetland Units of Flint Hills NWR

Coffey and Lyon Counties, Kansas

Draft



Frequency	Wetland_type	Acreage
8	CREATED	122.933
43	NATURAL	1933.972

Legend

Wetland Units

- Created Wetland
- Natural Wetland

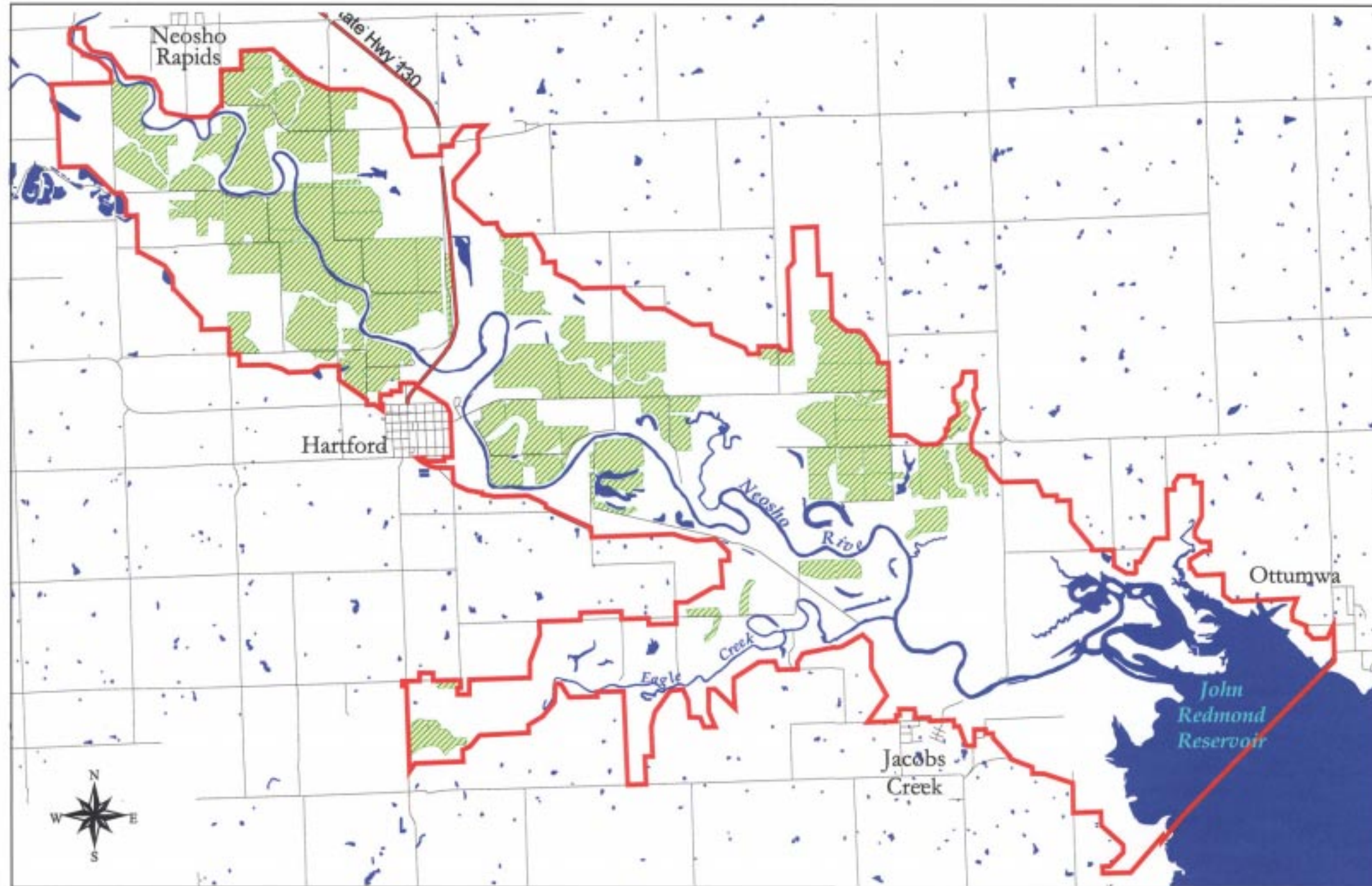


Map # 5 Wetland Units Map

Flint Hills National Wildlife Refuge



Coffey and Lyon Counties, Kansas

Draft



Type	Total Acres
AGRICULT	4297.3660

Legend

-  Refuge Boundary
-  Croplands as of 1999

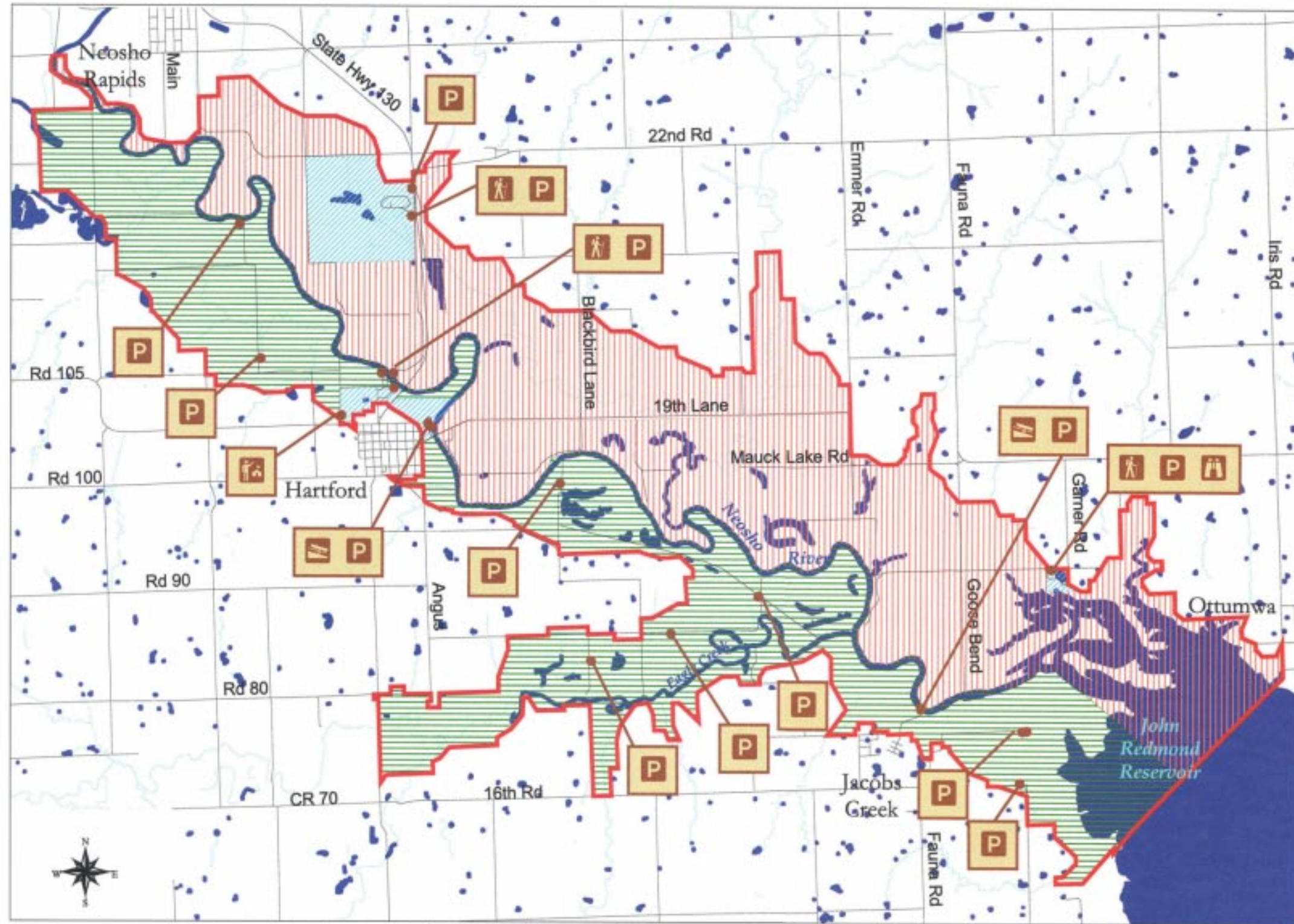
Agriculture fields digitized from
Refuge data August 1999

1 0 1 2 3 4 Miles

Map # 6 Cropland/Farmland Map

Flint Hills National Wildlife Refuge

Coffey and Lyon Counties, Kansas



Draft



Legend

- Public Use
- Open All Year
 - Open All Year - Except Hunting
 - Closed Nov. 1 - March 1
 - Refuge Headquarters
 - Parking Area
 - Hiking Trail
 - Boat Ramp
 - Observation Tower
- Please Consult Refuge and State Hunting and Public Use Regulations for Specific Guidelines*

Map # 7a Public Use Map

Flint Hills National Wildlife Refuge

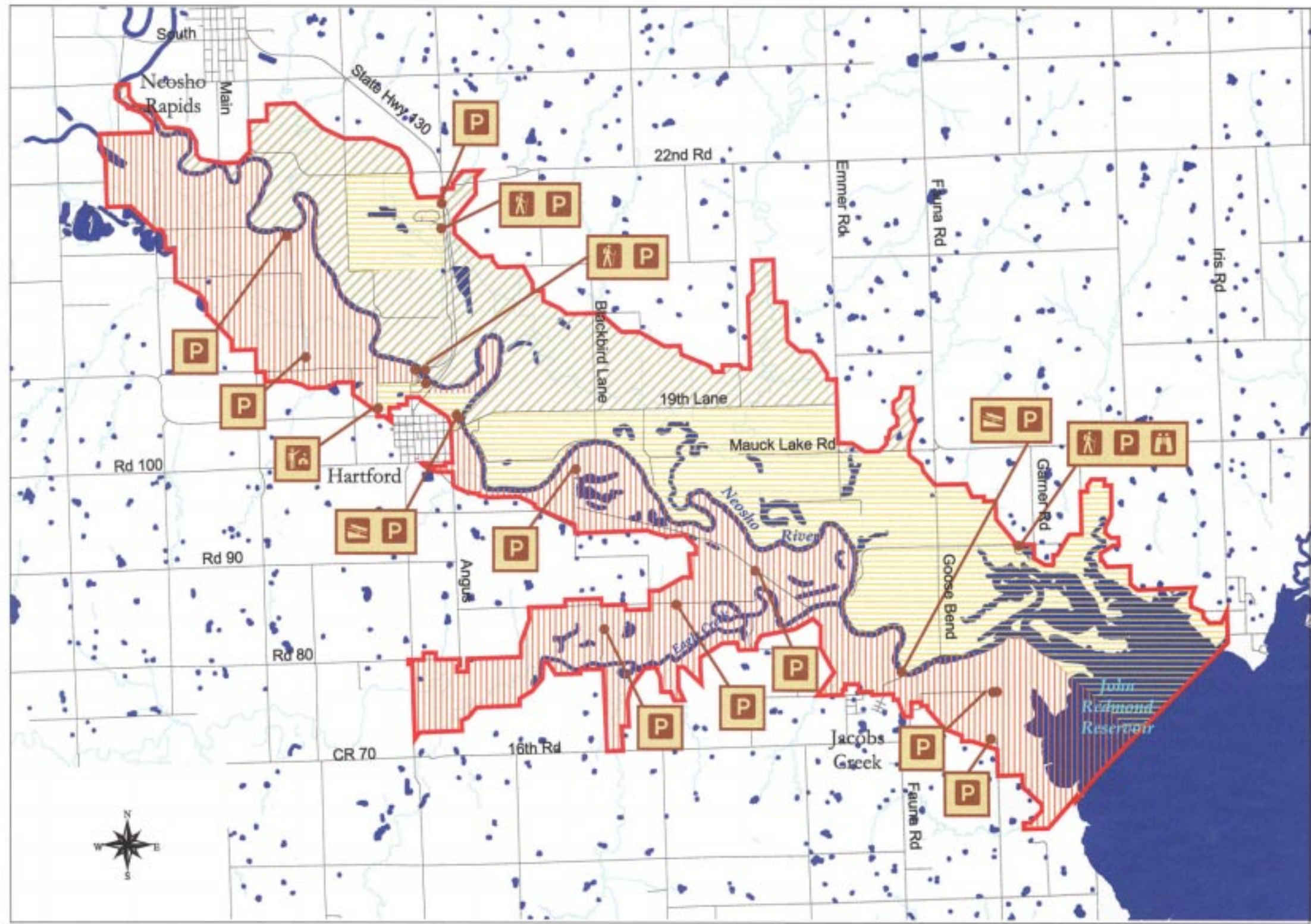
Coffey and Lyon Counties, Kansas

Draft



Legend

- Hunting**
- Open All Year Round
 - Closed All Year Round
 - Open to Hunting Mar.2 - Oct 31
Except Waterfowl Hunting
Closed to All Hunting Nov.1 - Mar.1
 - Refuge Headquarters
 - Parking Area
 - Hiking Trail
 - Boat Ramp
 - Observation Tower
- Please Consult Refuge and State
Hunting and Public Use Regulations
for Specific Guidelines*

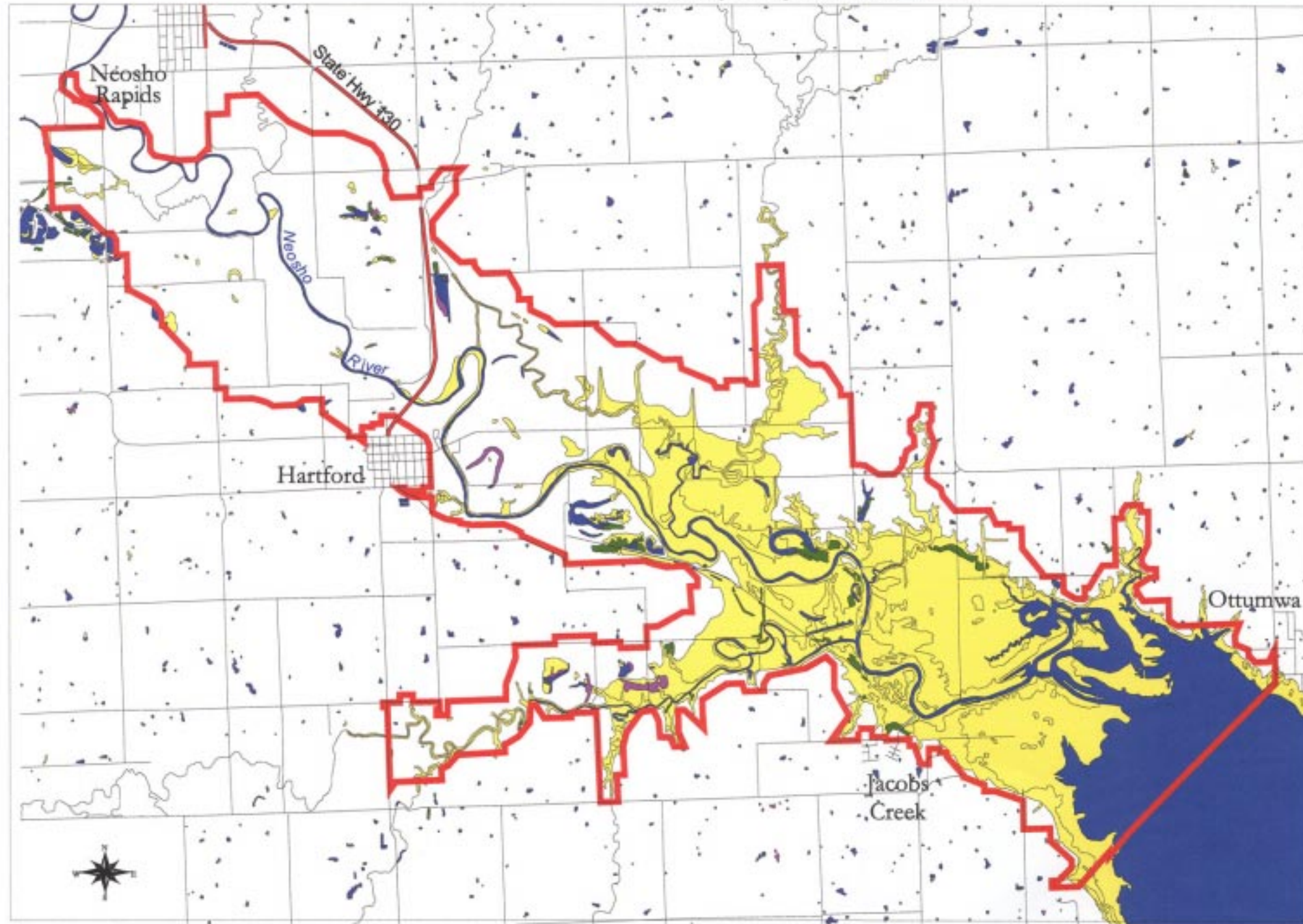


Map # 7b Hunting Map

Wetlands of Flint Hills NWR

Coffey and Lyon Counties, Kansas

Draft



Acres of Wetlands Within Refuge Boundary

Frequency	Regime	Acres
45	LAKE	1944.731000
1	RIVER	136.148000
75	SEASONAL	145.741000
10	SEMI-PERMANENT	61.071000
269	TEMPORARY	6053.223000
59	UPLAND	10233.358000

Based on FWS-NWI Data

Legend

- Wetland Water Regimes**
- Open Water
 - River
 - Seasonally Flooded
 - Semipermanently Flooded
 - Temporarily Flooded
 - Upland

NWI Data based on May 1985, June 1985, and June 1986 color infrared aerial photographs.

1 0 1 2 3 4 Miles

Map # 8 Wetland Habitat Map