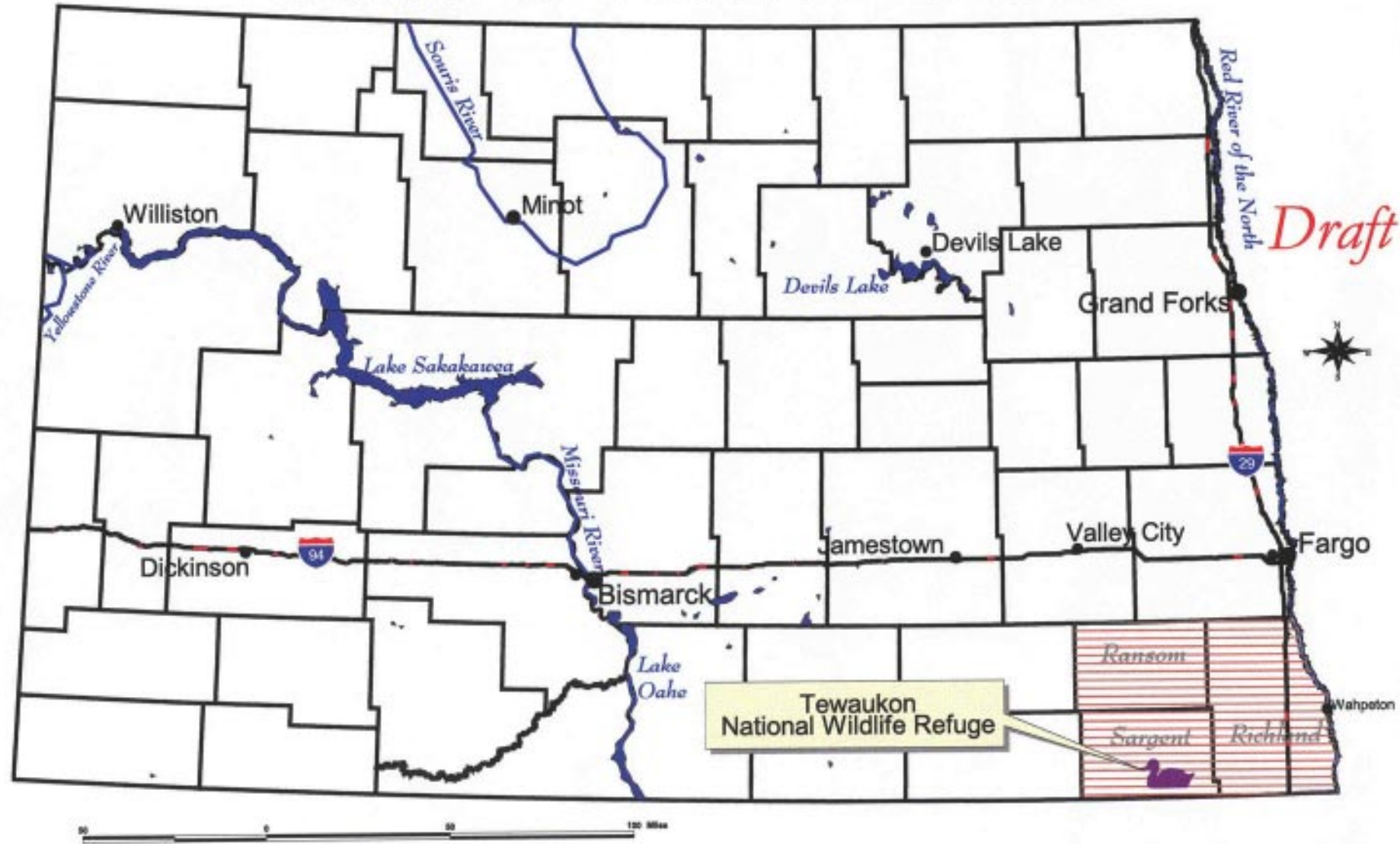


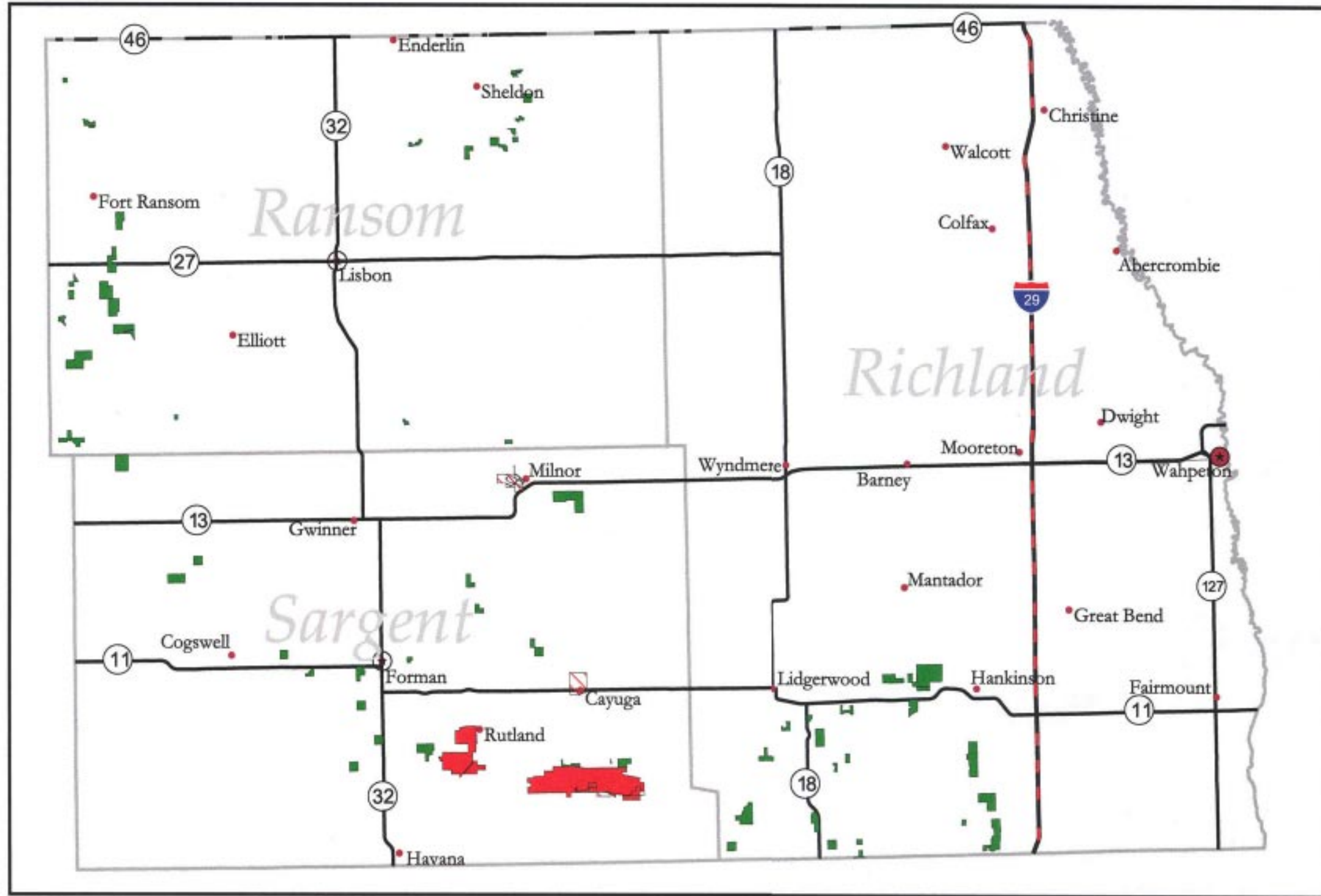
# State of North Dakota



Map #1 Location Within North Dakota




# Tewaukon Wetland Management District


Ransom, Richland, and Sargent Counties, North Dakota



*Draft*

**Legend**

-  Easement Refuge
-  Waterfowl Production Area
-  National Wildlife Refuge

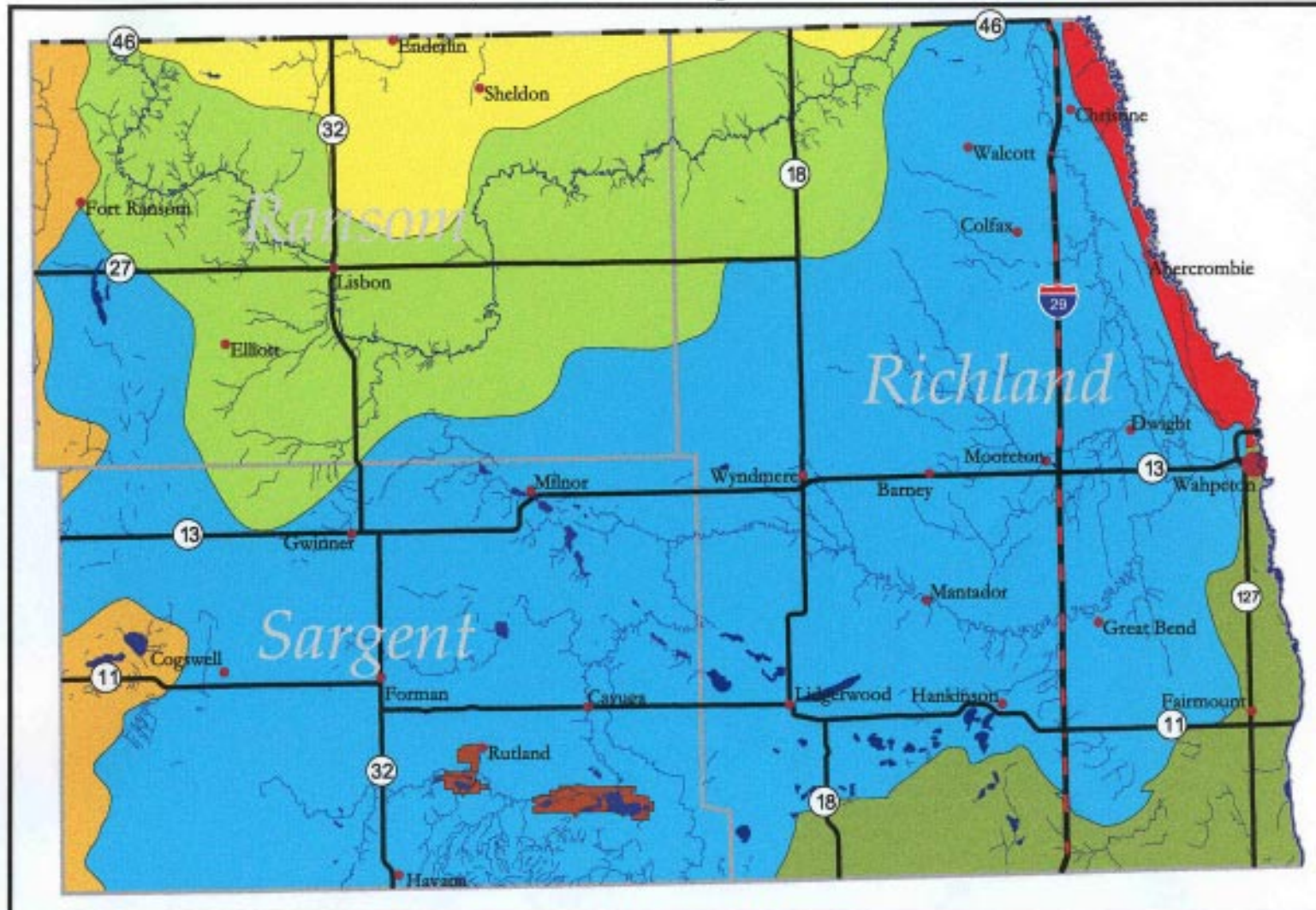


Map #2 Location Within District



# Tewaukon Wetland Management District

Ransom, Richland, and Sargent Counties, North Dakota



*Draft*



### Legend

- Watersheds
- Upper James
  - Maple
  - Lower Sheyenne
  - Upper Red
  - Western Wild Rice
  - Bois De Sioux

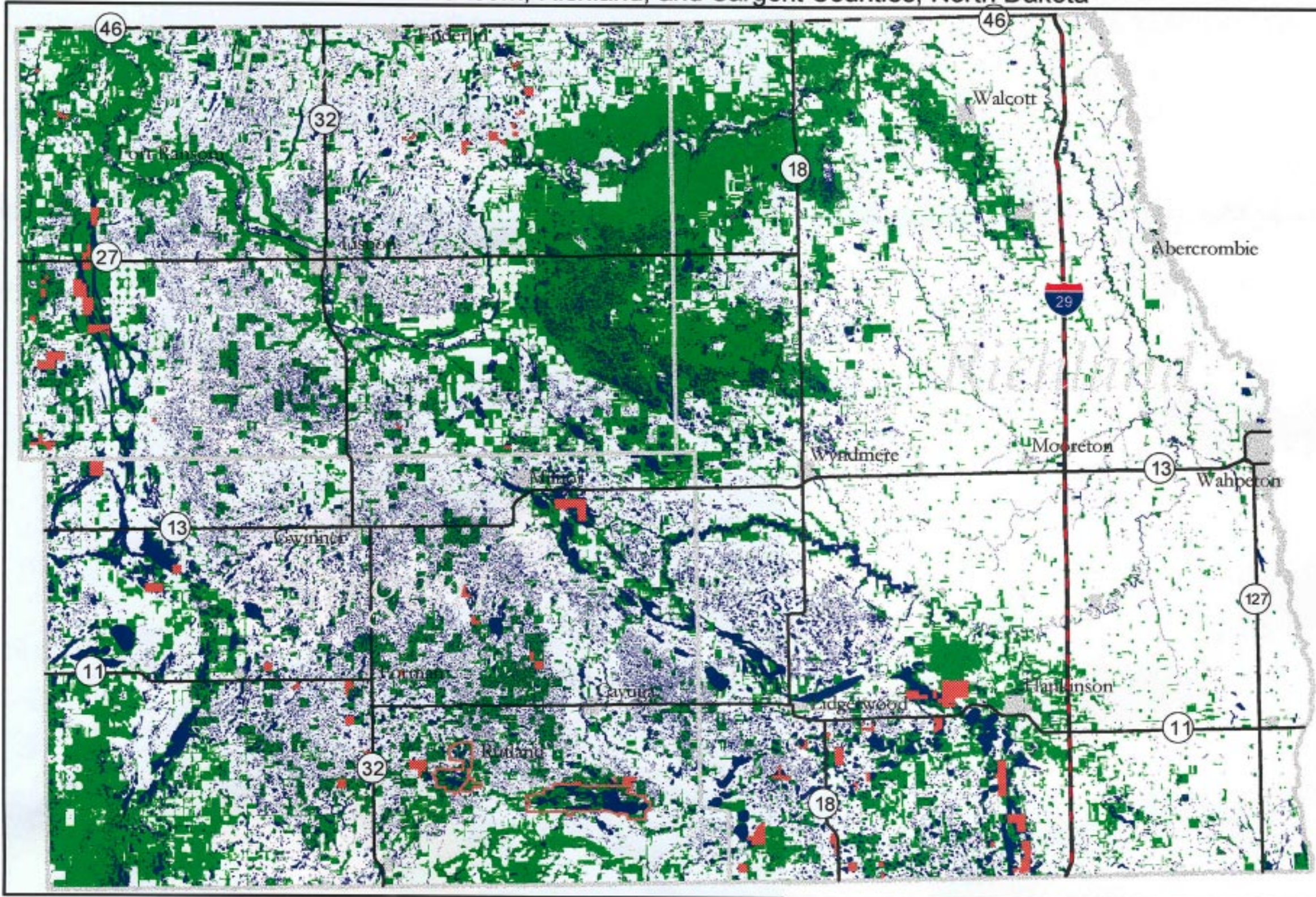


Map #3 Watershed District Map



# Tewaukon Wetland Management District

Ransom, Richland, and Sargent Counties, North Dakota




*Draft*

**Legend**

Covertypes

- Wetland (NWI)
- Grassland
- Cropland
- Forest and Shelterbelt
- Urban
- Waterfowl Production Areas



Map #4 Landcover Map for District

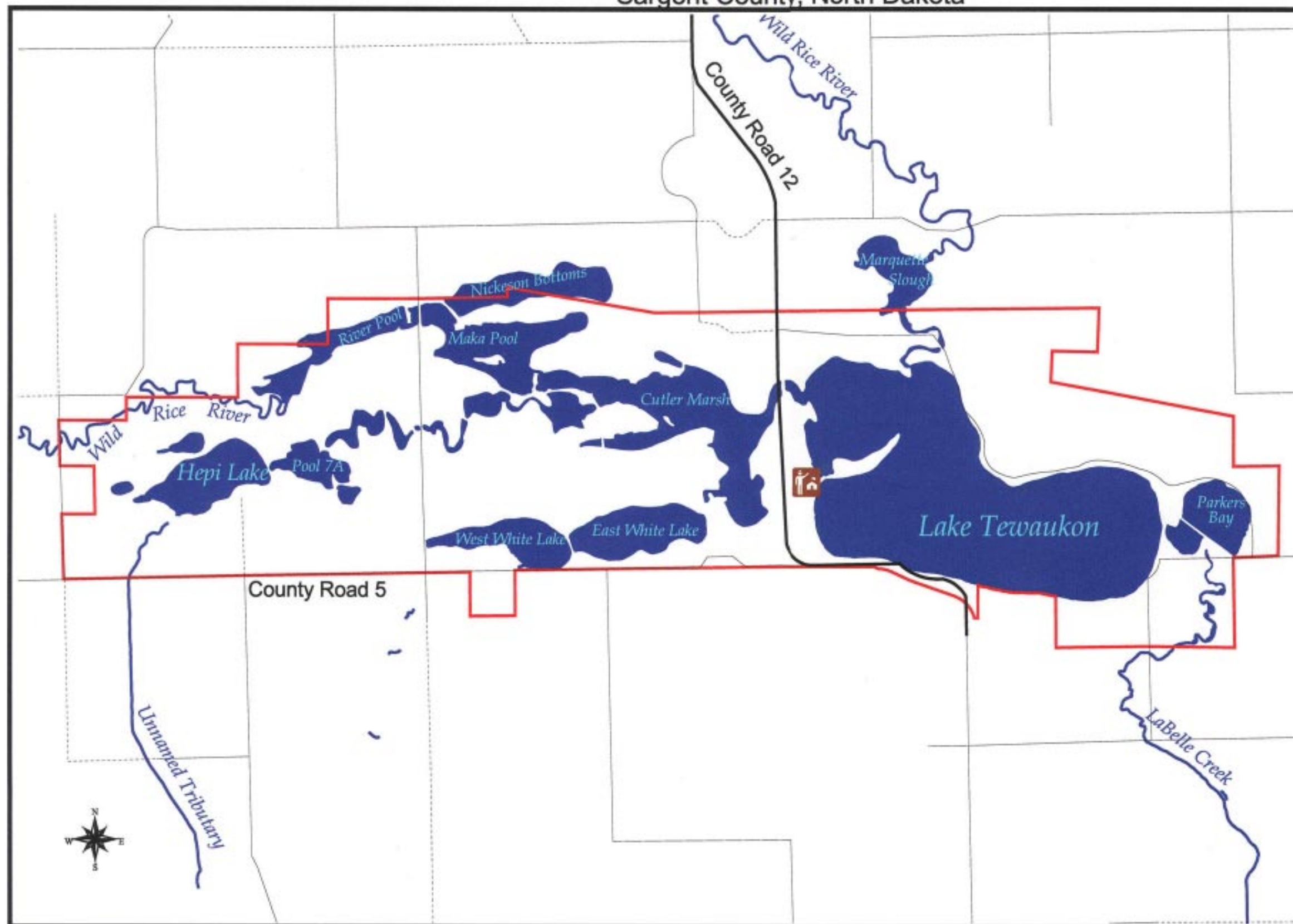


# Tewaukon Unit

Sargent County, North Dakota



*Draft*



**Legend**

- Refuge Boundary
- Managed Wetlands
- Rivers and Streams
- Refuge Headquarters

**Road Types**

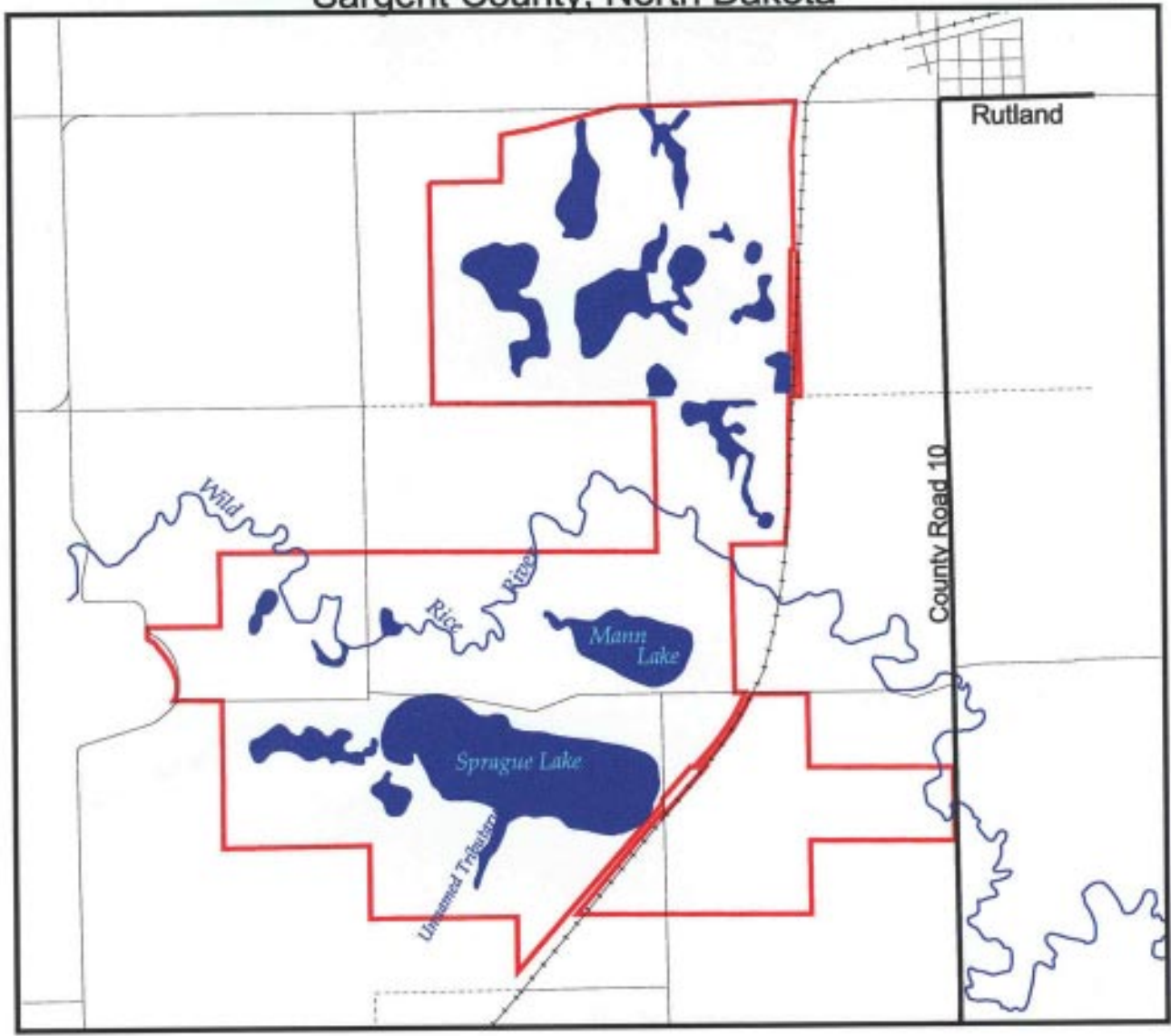
- Gravel
- Limited Access or Trail
- Paved



Map #5 Refuge Map - Tewaukon Unit

# Sprague Lake Unit

Sargent County, North Dakota



**Legend**

Limited Access or Trail	Refuge Boundary
Gravel	Managed Wetlands
Paved	Rivers and Streams
Railroad	



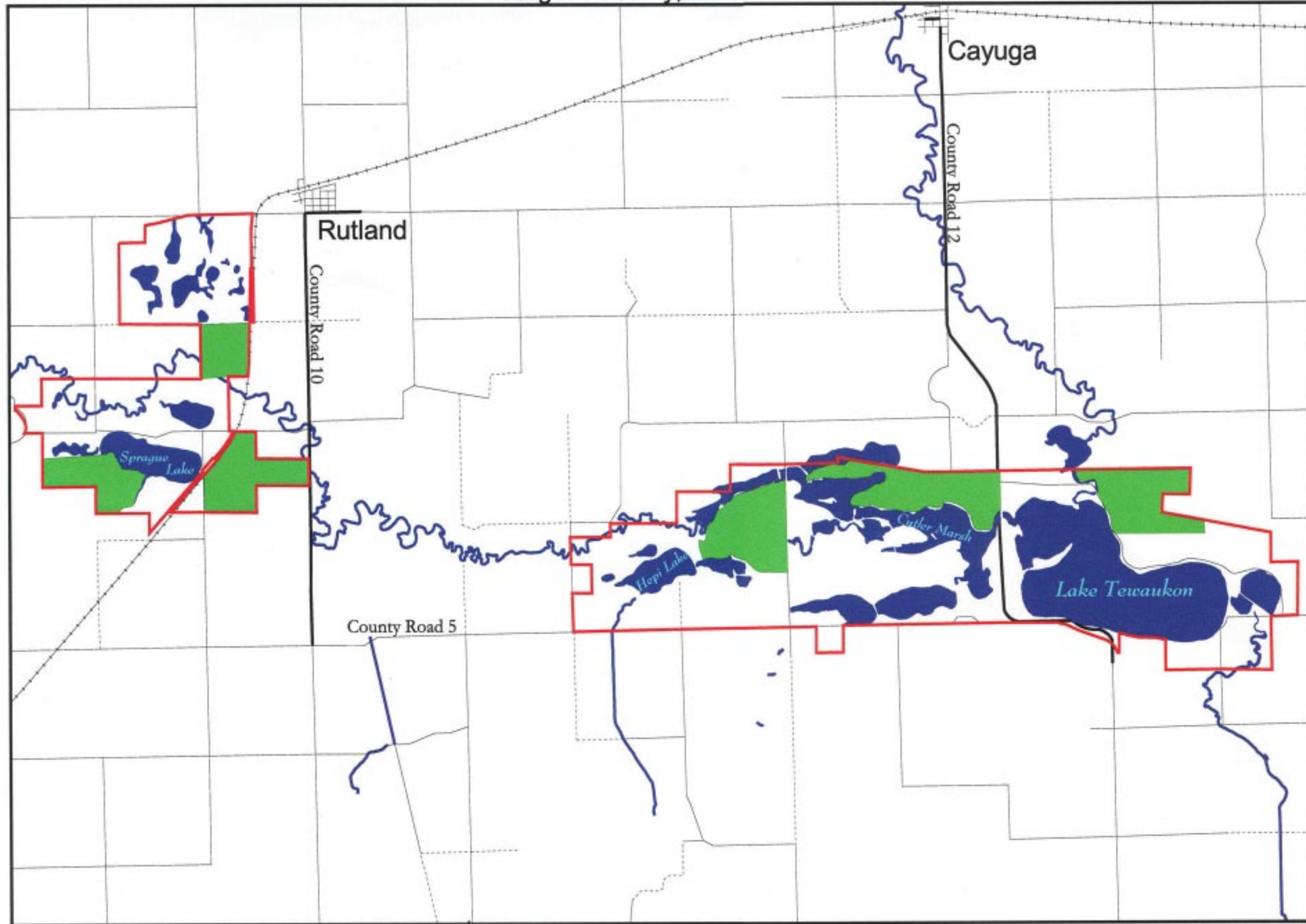
*Draft*

Map #6 Refuge Map - Sprague Lake Unit



# Tewaukon National Wildlife Refuge

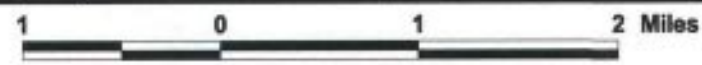
Sargent County, North Dakota



*Draft*

## Legend

- Priority Grasslands  
*(Total of 1,504 Acres)*
- Managed Wetlands
- Rivers and Streams
- Road Types**
- Limited Access or Trail
- Gravel
- Paved
- Railroad

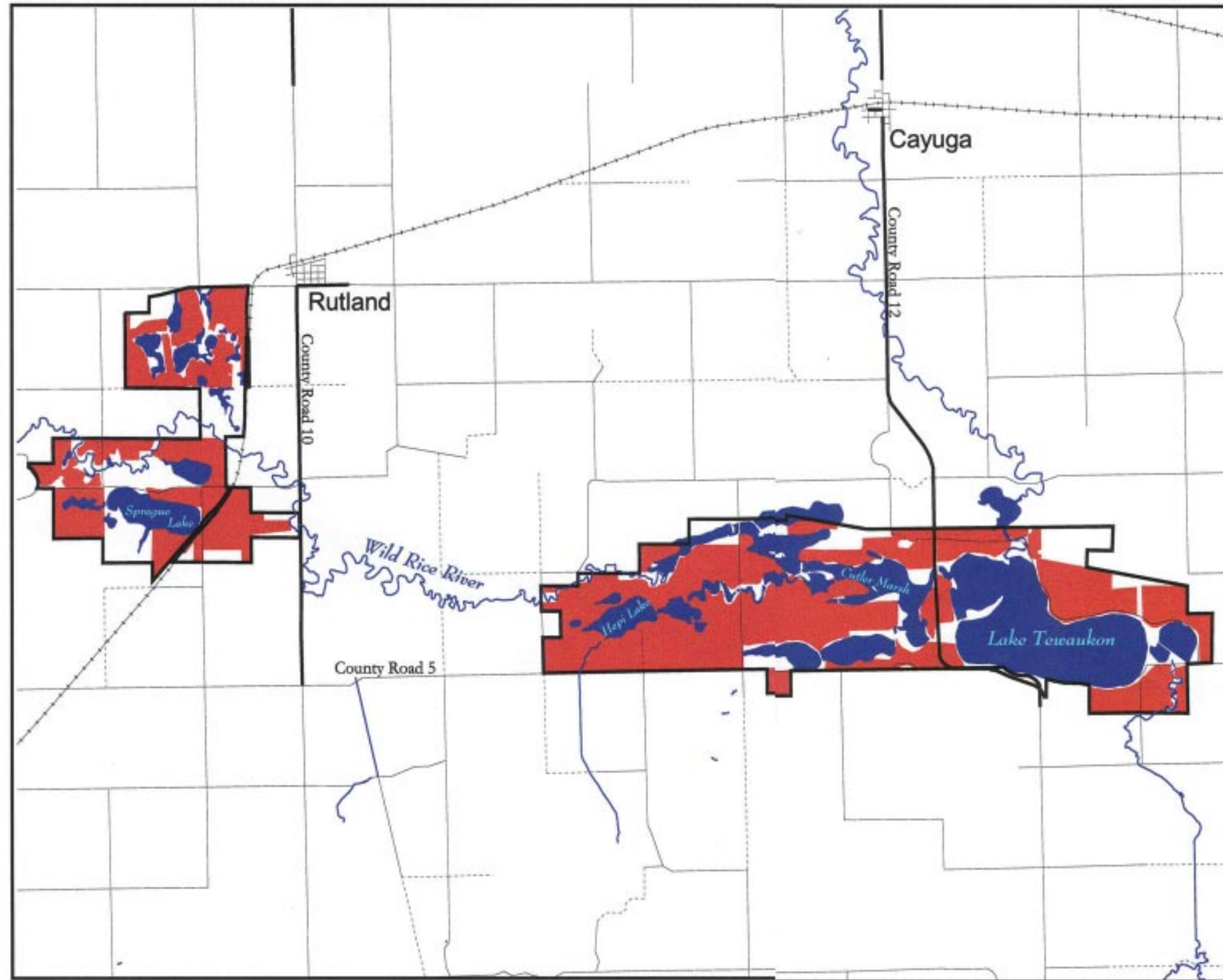


Map #7 Six Priority Grassland Sites



# Tewaukon National Wildlife Refuge

Sargent County, North Dakota



*Draft*

**Legend**

- Historic Cropland**  
*(Total of 4,303 Acres)*
- Managed Wetlands**
- Rivers and Streams**
- Road Types**
- Limited Access or Trail
- Gravel
- Paved
- Railroad

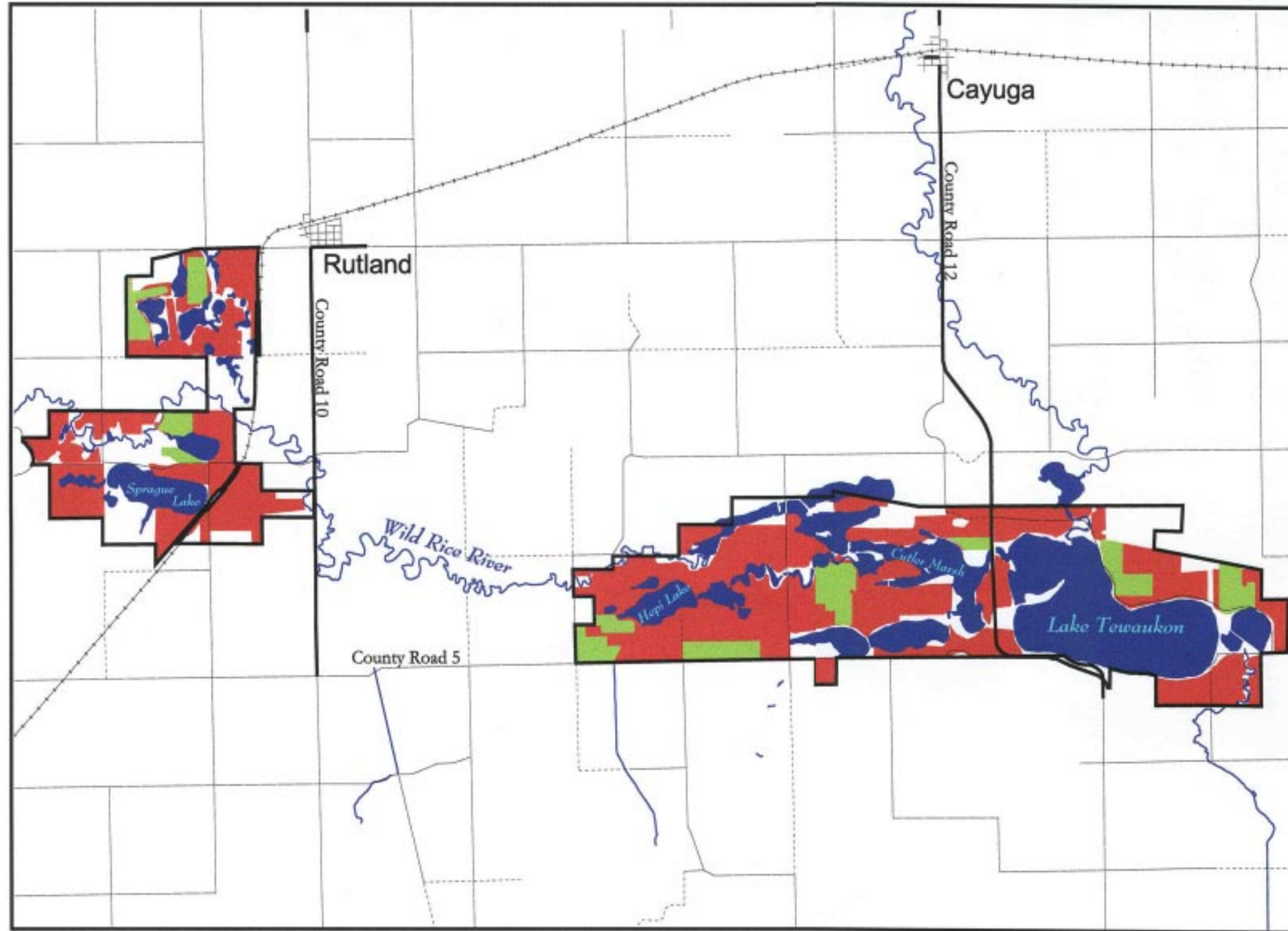


Map #8 Historic Cropland



# Tewaukon National Wildlife Refuge

Sargent County, North Dakota



*Draft*

## Legend

- Historic Cropland (Retired)**  
*(Total of 4,503 Acres)*
- Current Cropland**  
*(Total of 615 Acres)*
- Managed Wetlands**
- Rivers and Streams**
- Road Types**
  - Limited Access or Trail
  - Gravel
  - Paved
  - Railroad



Map #9 Cropland Past and Present

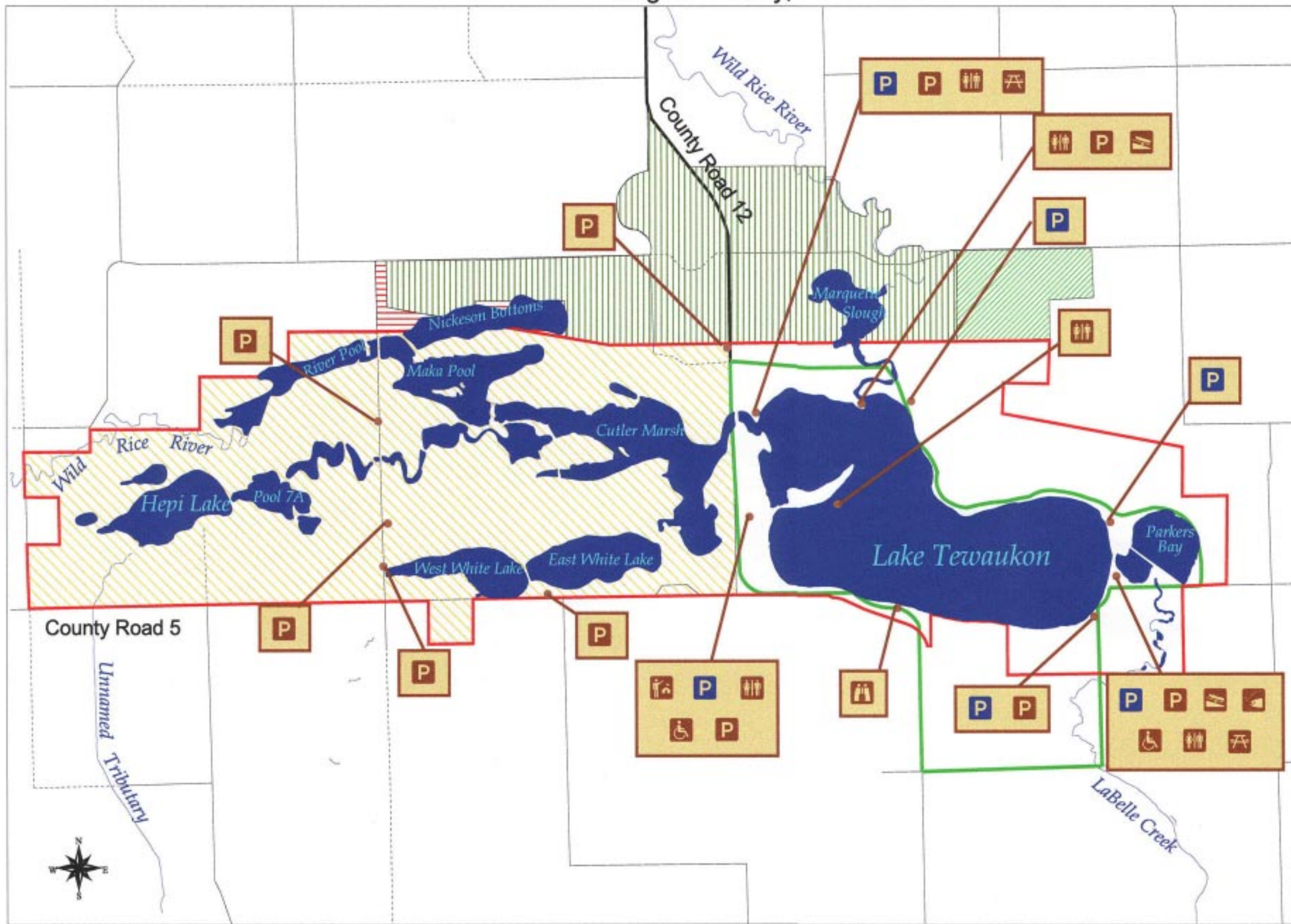


# Tewaukon Unit

Sargent County, North Dakota



*Draft*



### Legend

- Closed Area - Closed to All Public Use January 1 - August 30
- Krause Waterfowl Production Area (Open to Hunting per State Season)
- Nickeson Waterfowl Production Area (Open to Hunting per State Season)
- North Dakota Game and Fish Wildlife Management Area
- Auto Tour Route (Open May 1 through September 30)
- Boat Ramp - Boat Fishing (Open May 1 through September 30)
- Fishing Access Dock - Bank Fishing Open Year Round
- Refuge Headquarters
- General Parking Area
- Hunting Parking Area
- Rest Room
- Universally Accessible
- Picnic Area
- Overlook

*Please Consult Refuge Public Use Regulations for Specific Guidelines*

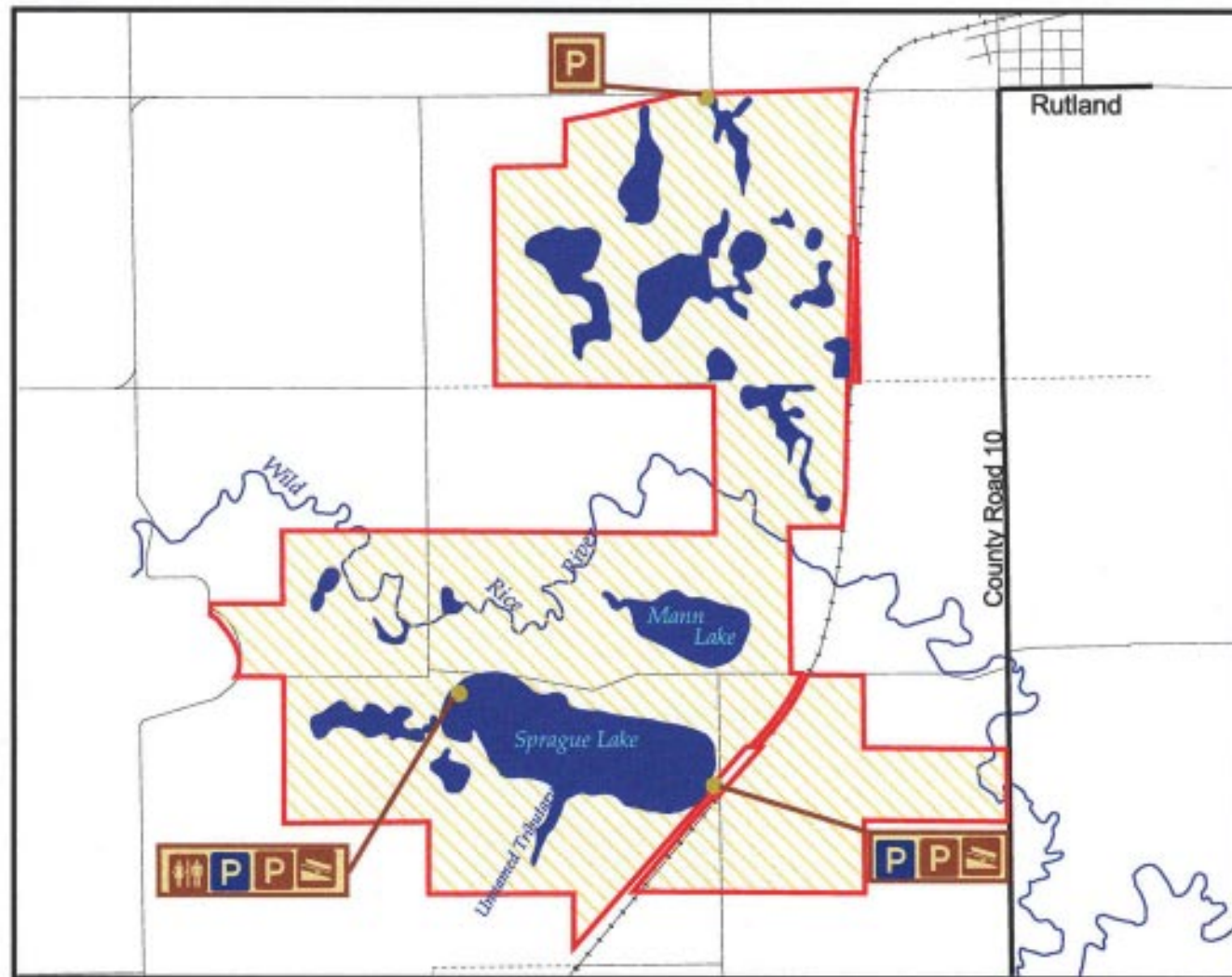


Map #10 Public Use Tewaukon Unit  
*(May-August)*



# Sprague Lake Unit

Sargent County, North Dakota



**Legend**

Closed Area - Closed to all Public Use January 1 - August 30	General Parking Area
Managed Wetlands	Hunting Parking Area
Rivers and Streams	Rest Room
<b>Road Types</b>	Boat Ramp Boat Fishing Open May 1 - September 30 Bank Fishing Open Year Round
Limited Access or Trail	
Gravel	
Paved	
Railroad	

*Please Consult Refuge Public Use Regulations for Specific Guidelines*



*Draft*

Map #11 Public Use Sprague Lake Unit  
(May - August)

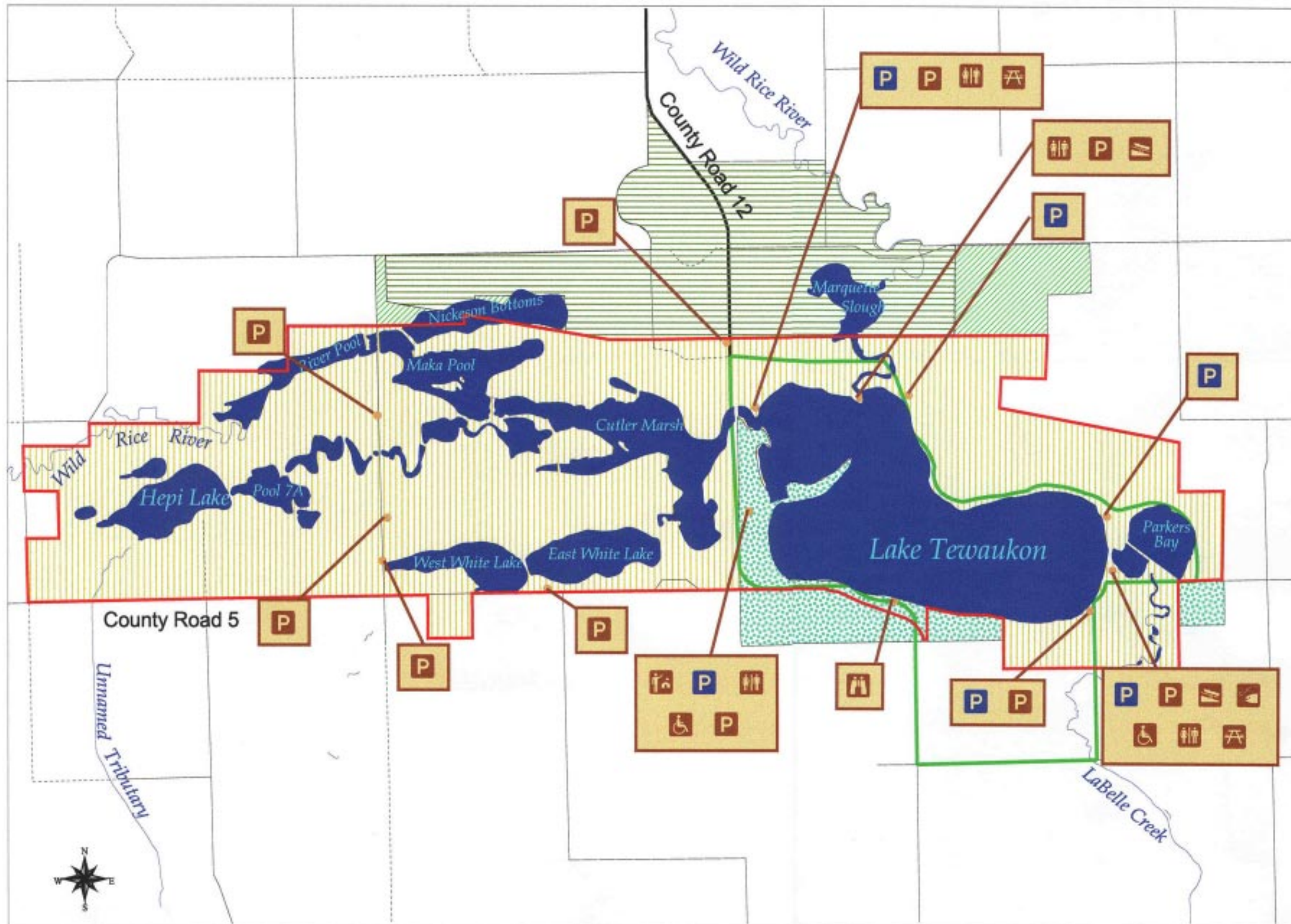


# Tewaukon Unit

Sargent County, North Dakota



*Draft*



### Legend

- Public Use Area - Open to Archery in September, Special Permit Deer Hunting in November, and Pheasant Hunting in December
- No Hunting Area - Point Road Closed October 1 - April 30
- Waterfowl Production Area (Open to Hunting per State Season)
- North Dakota Game and Fish Wildlife Management Area
- Auto Tour Route (Closed October 1 through April 30)
- Boat Ramp - Boat Fishing (Closed October 1 through April 30)
- Fishing Access Dock - Bank Fishing Open Year Round
- Refuge Headquarters
- General Parking Area
- Hunting Parking Area
- Rest Room
- Universally Accessible
- Picnic Area
- Overlook

*Please Consult Refuge and State Hunting Regulations for Specific Guidelines*

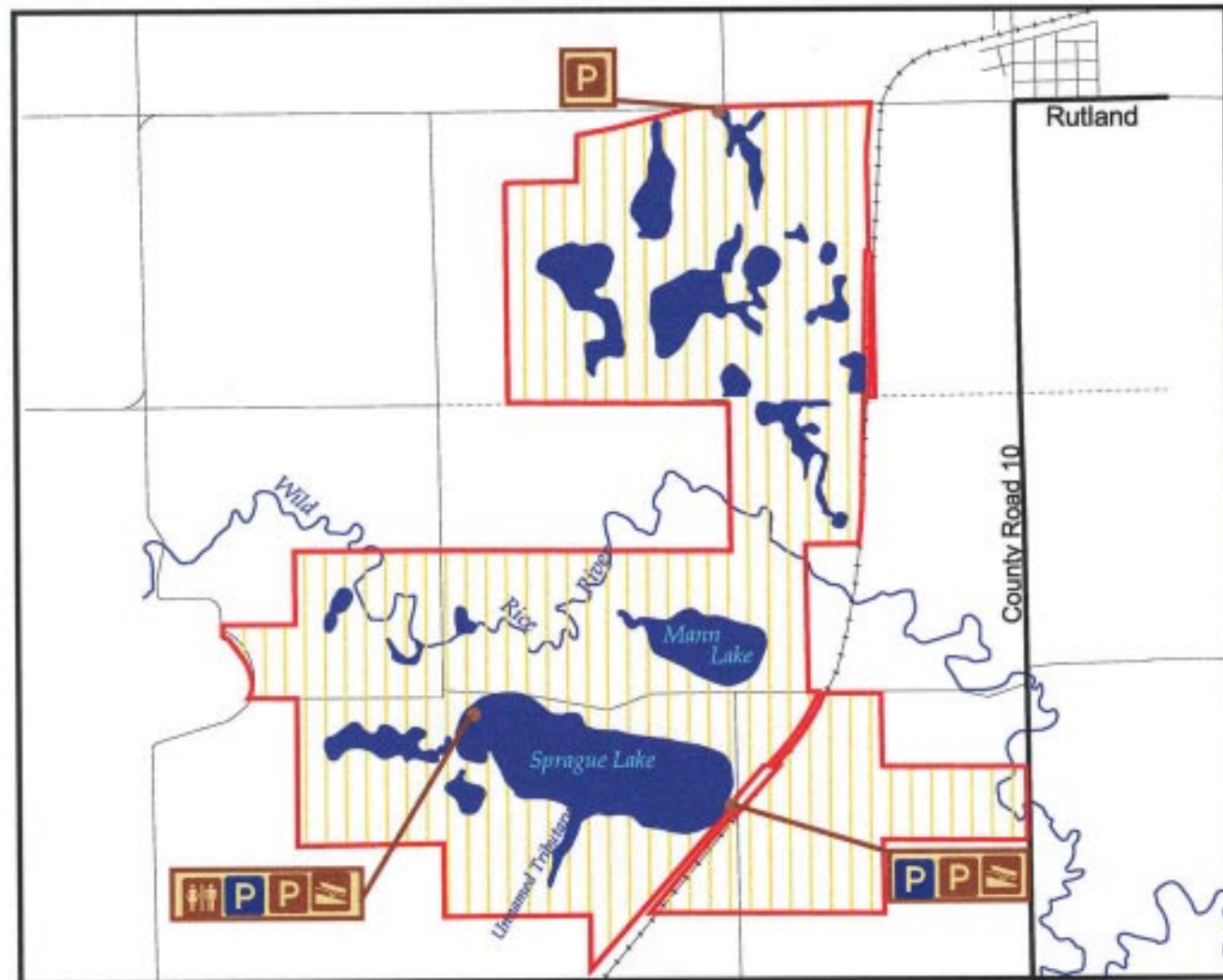


Map #12 Public Use Tewaukon Unit (September-April)



# Sprague Lake Unit

Sargent County, North Dakota



**Legend**

Public Use Area - Open to Archery in September, Special Permit Deer Hunting in November, and Pheasant Hunting in December	General Parking Area
Managed Wetlands	Hunting Parking Area
Rivers and Streams	Rest Room
<b>Road Types</b>	Boat Ramp Boat Fishing Closed October 1 - April 30 Bank Fishing Open Year Round
Limited Access or Trail	
Gravel	
Paved	
Railroad	

*Please Consult Refuge and State Hunting Regulations for Specific Guidelines*



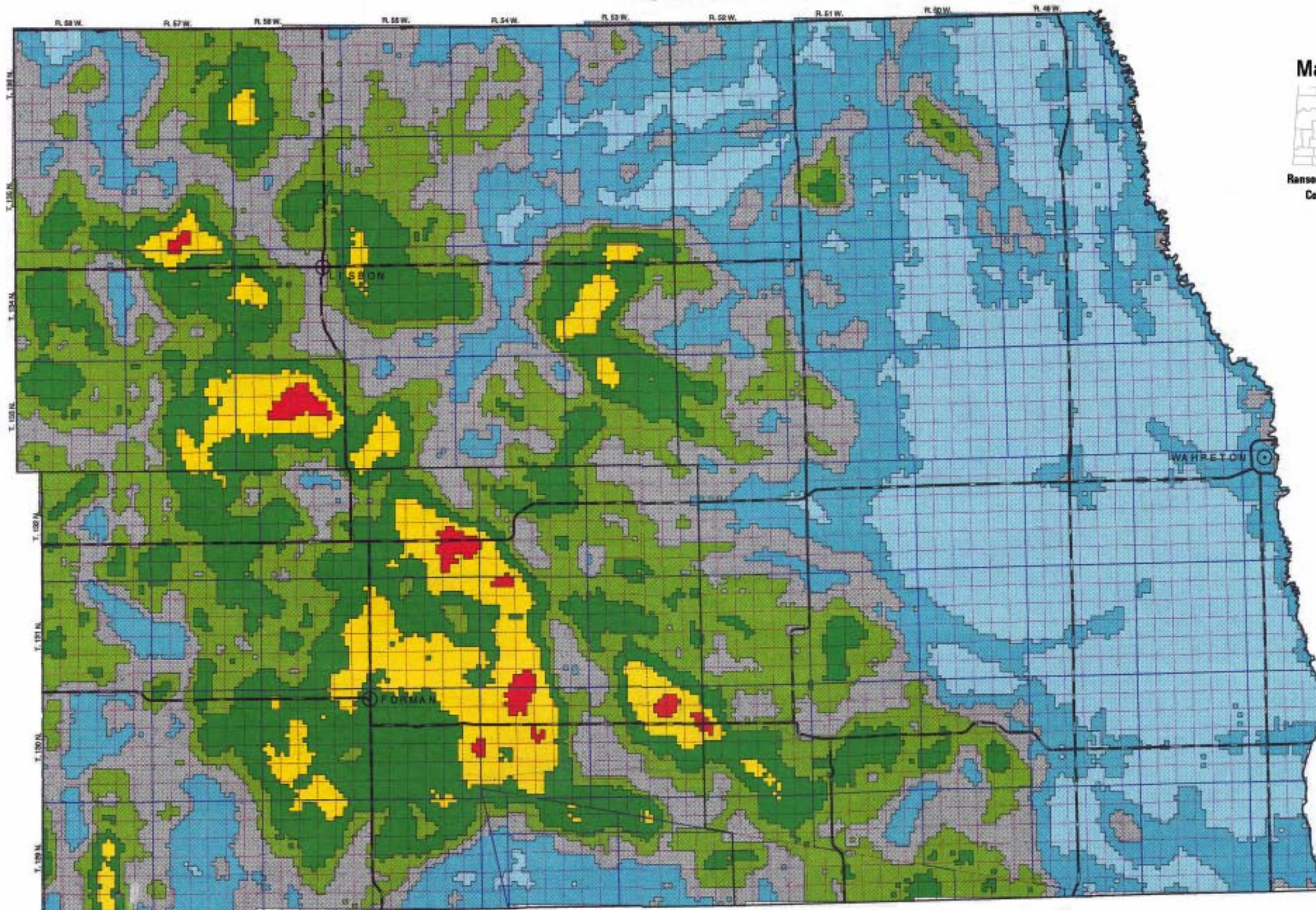
*Draft*

Map #13 Public Use Sprague Lake Unit  
(September - April)



# WATERFOWL BREEDING PAIR DISTRIBUTIONS

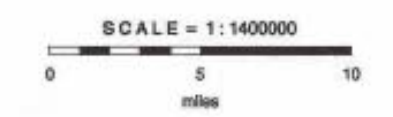
## Tewaukon Wetland Management District, North Dakota



### Map Location



Waterfowl pair density information in this map was generated with GIS modeling technique utilizing National Wetland Inventory digital data, Four Square Mile Survey results, and pair/wetland regression equations. The information presented represent the combined breeding pair densities of mallard, blue-winged teal, gadwall, pintail and shoveler displayed in percentile landscape classes. All data processing, statistical analyses and hardcopy output were produced with Arc/Info GIS software on a SUN SPARC-20 UNIX workstation. This map was produced by the U.S.F.W.S Habitat and Population Evaluation Team, Bismarck, North Dakota in July, 1995.



Projection: Universal Transverse Mercator, Zone 14

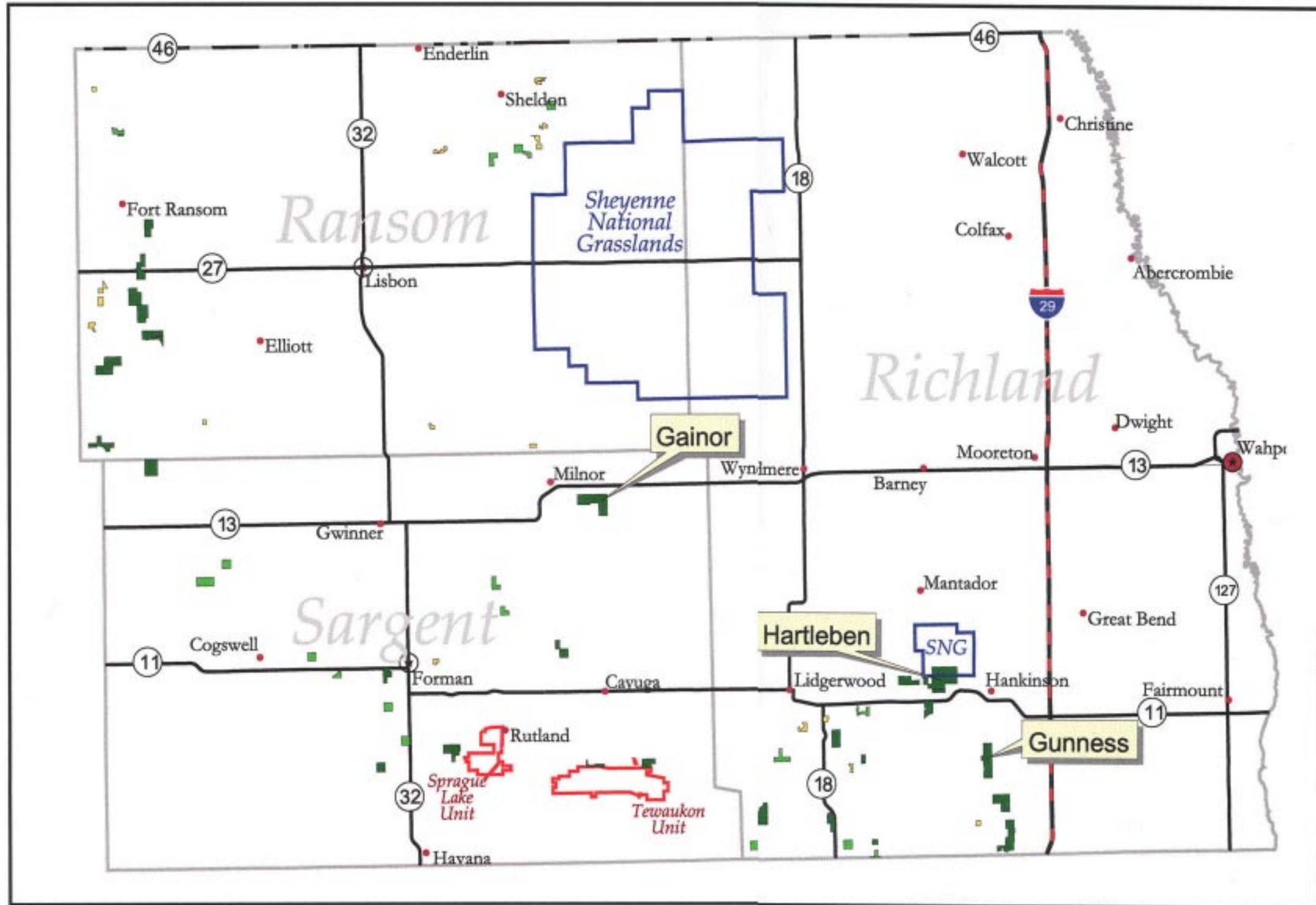
PERCENTILE LANDBASE	DUCK PAIRS PER SQUARE MILE	
	range	mean
99 - 5	108 - 121	113
95	85 - 107	93
80	55 - 84	68
60	37 - 54	45
40	19 - 36	27
20	7 - 18	12
0	0 - 6	4

**Map #14 Thunderstorm Map**



# Tewaukon Wetland Management District

Ransom, Richland, and Sargent Counties, North Dakota



*Draft*

**Legend**

Waterfowl Production Area Priorities

- High
- Moderate
- Low

