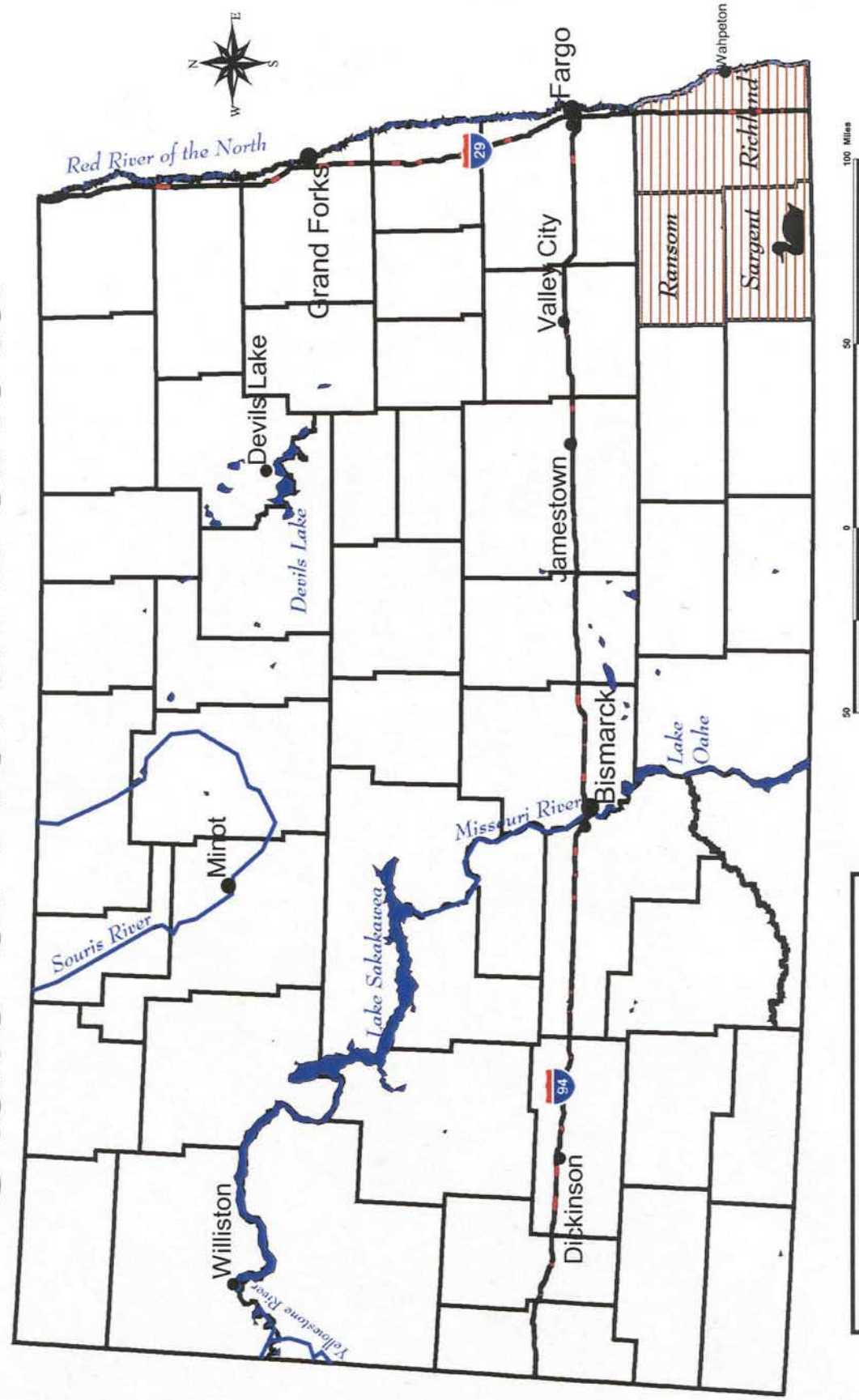


# State of North Dakota



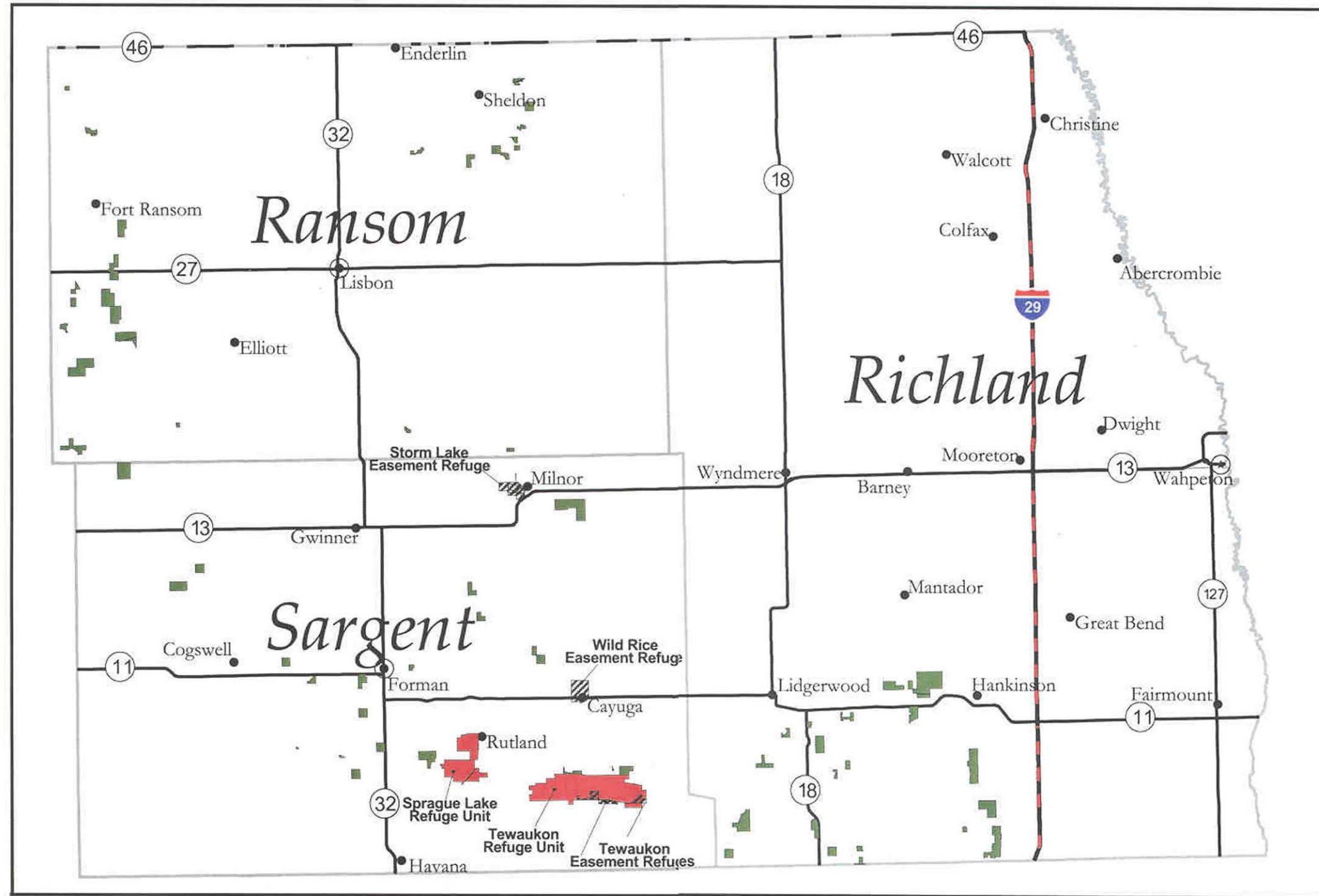
**Legend**

- Tewaikon National Wildlife Refuge
- Tewaikon Wetland Management District

Map #1 Location Within North Dakota

# Tewaukon National Wildlife Refuge Complex

Ransom, Richland, and Sargent Counties, North Dakota



**Legend**

- Easement Refuge
- Waterfowl Production Area
- National Wildlife Refuge
- County Seats
- Towns

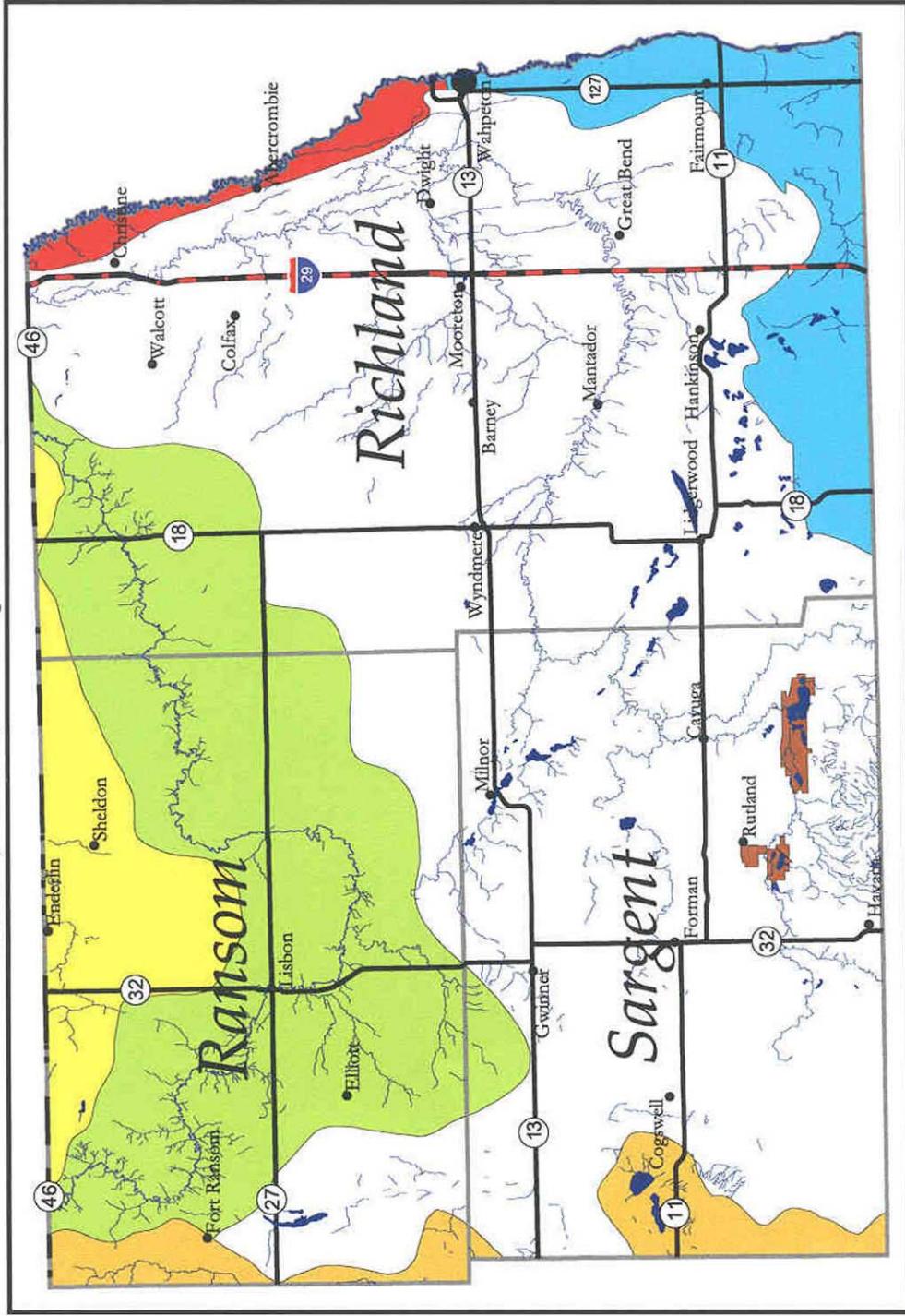


Map #2 Location of Management Units Within Complex



# Tewaukon National Wildlife Complex

Ransom, Richland, and Sargent Counties, North Dakota



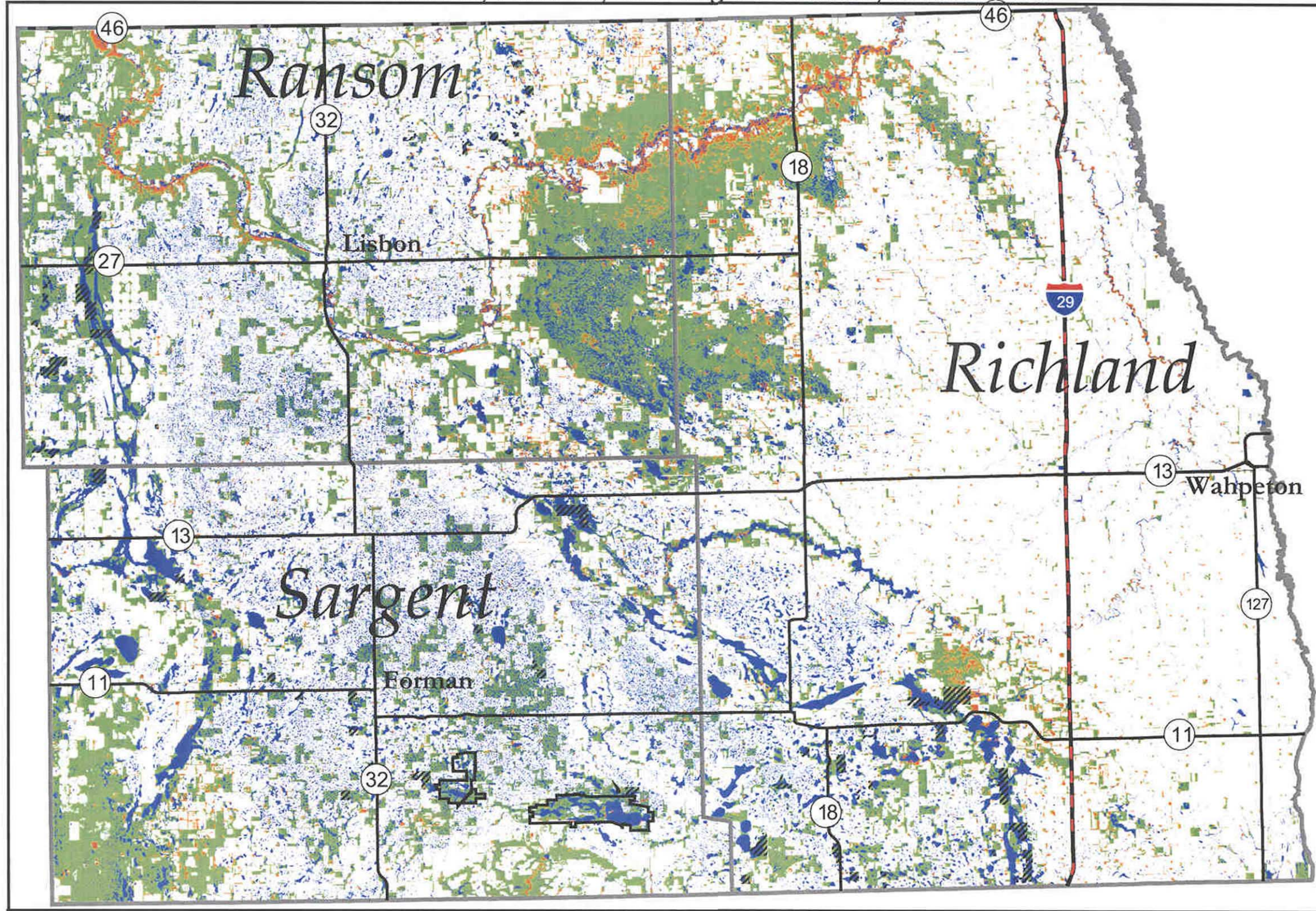
10 0 10 20 30 40 50 Miles

Map #3 Tewaukon Complex Watershed Map



# Tewaukon National Wildlife Refuge Complex

Ransom, Richland, and Sargent Counties, North Dakota



**Legend**

Covertypes

- Wetland (NW)
- Grassland
- Cropland
- Forest and Shelterbelt
- Waterfowl Production Areas

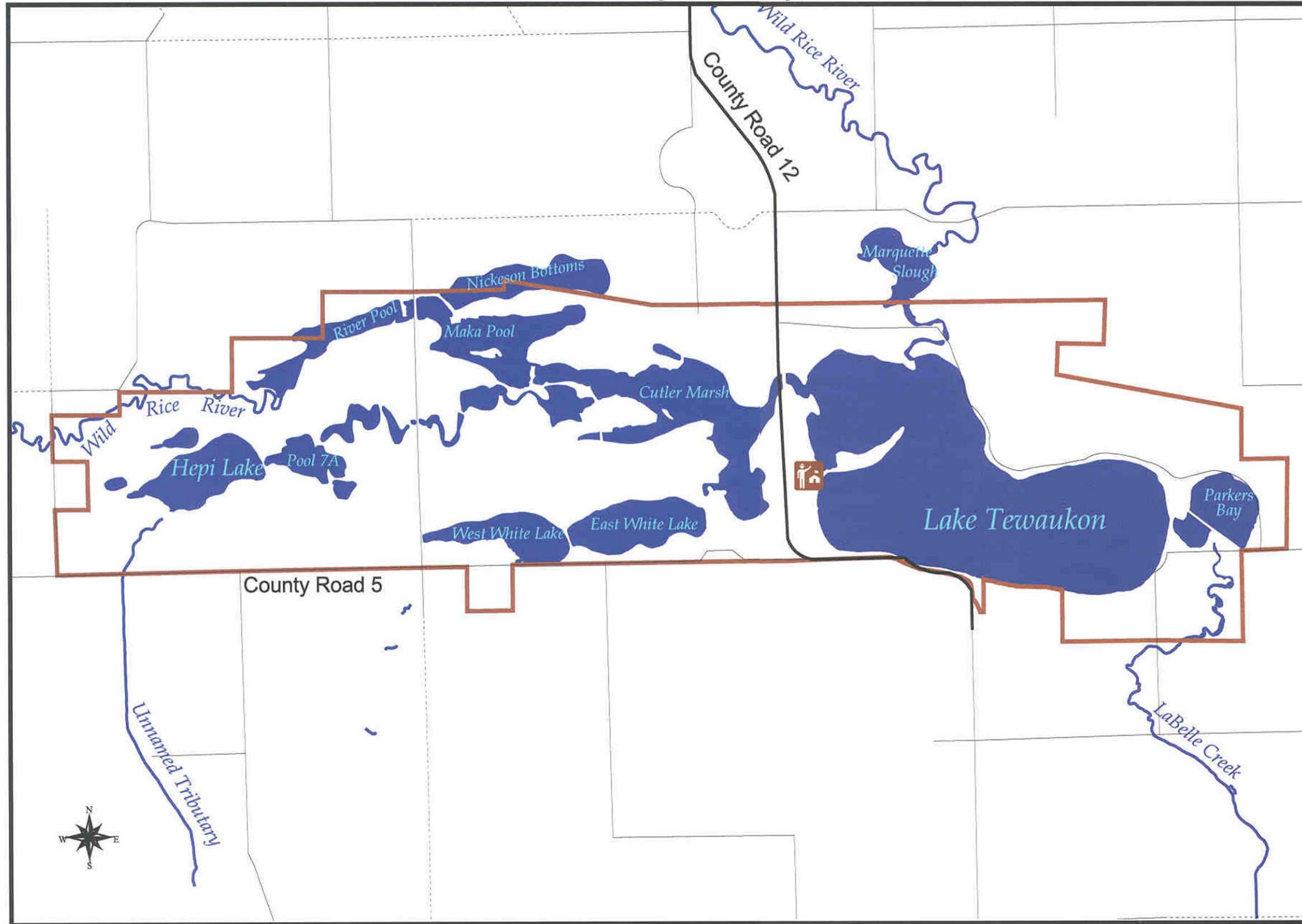


Map #4 Landcover Map for Tewaukon Complex



# Tewaukon Unit

Sargent County, North Dakota



**Legend**

- Refuge Boundary
- Managed Wetlands
- Rivers and Streams
- Refuge Headquarters

**Road Types**

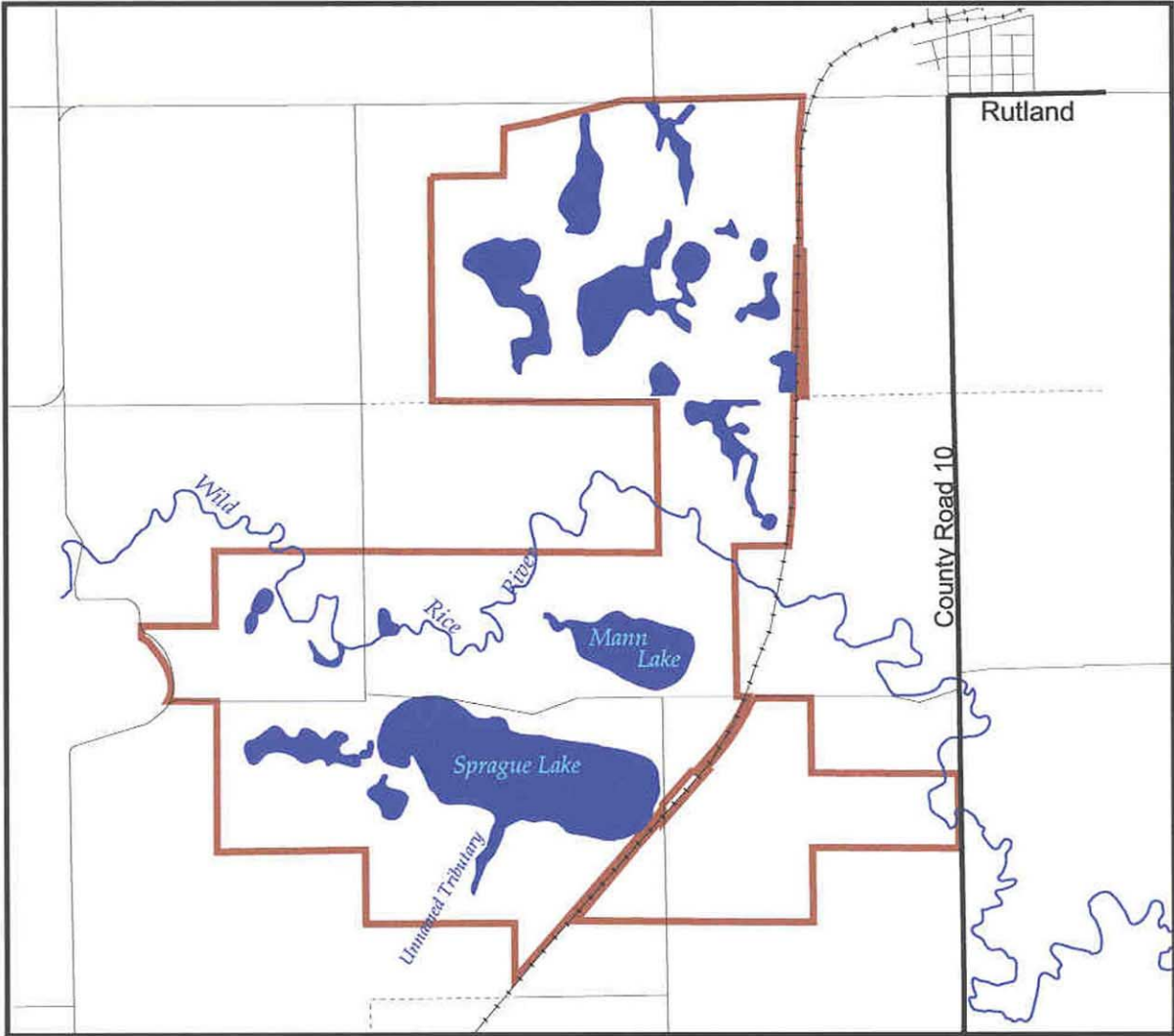
- Gravel
- Limited Access Trail
- Paved



Map #5 Refuge Map - Tewaukon Unit

# Sprague Lake Unit

Sargent County, North Dakota



1 0 1 Miles

**Legend**

Limited Access Trail	Refuge Boundary
Gravel	Managed Wetlands
Paved	Rivers and Streams
Railroad	

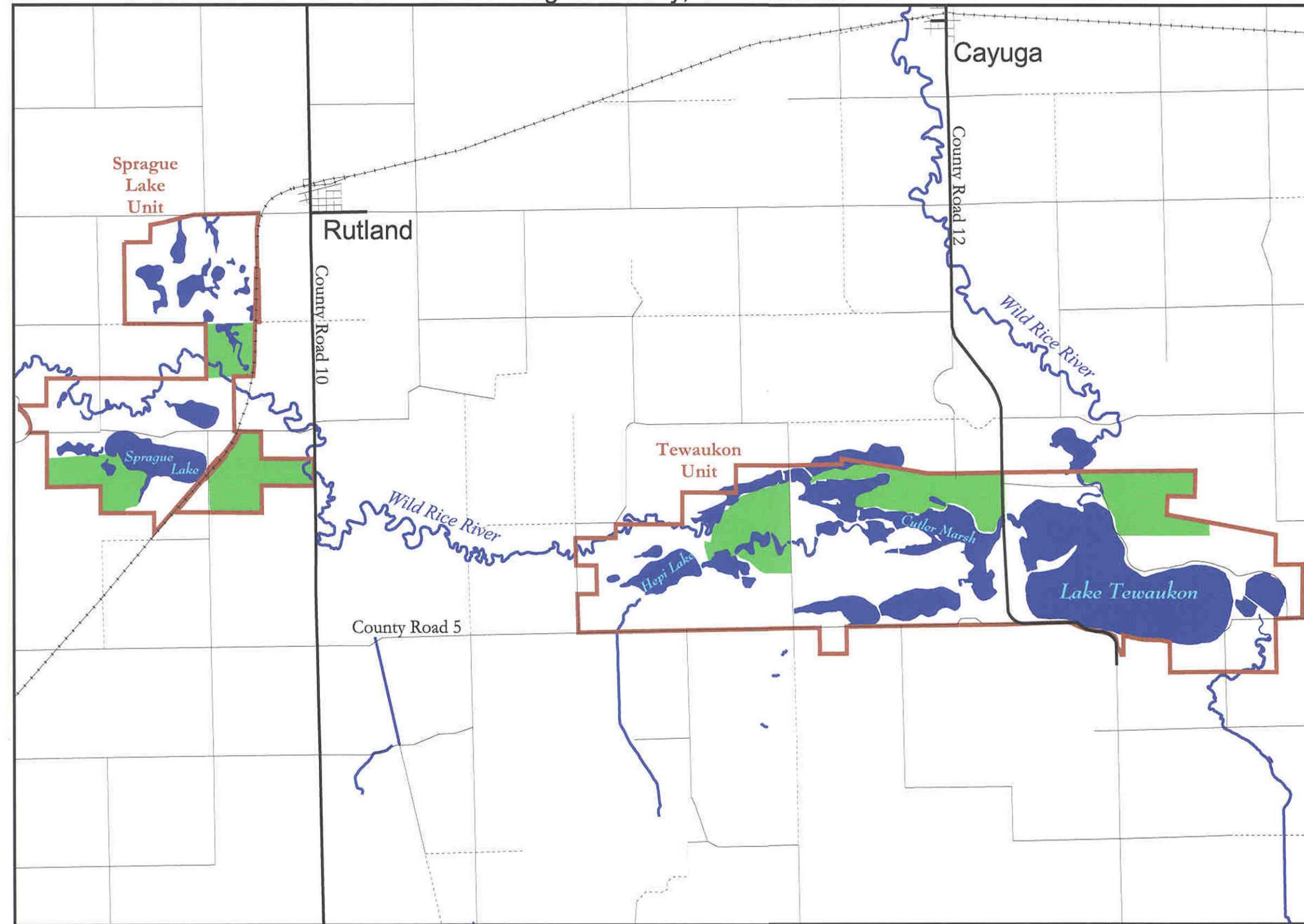


Map #6 Refuge Map - Sprague Lake Unit



# Tewaukon National Wildlife Refuge

Sargent County, North Dakota



## Legend

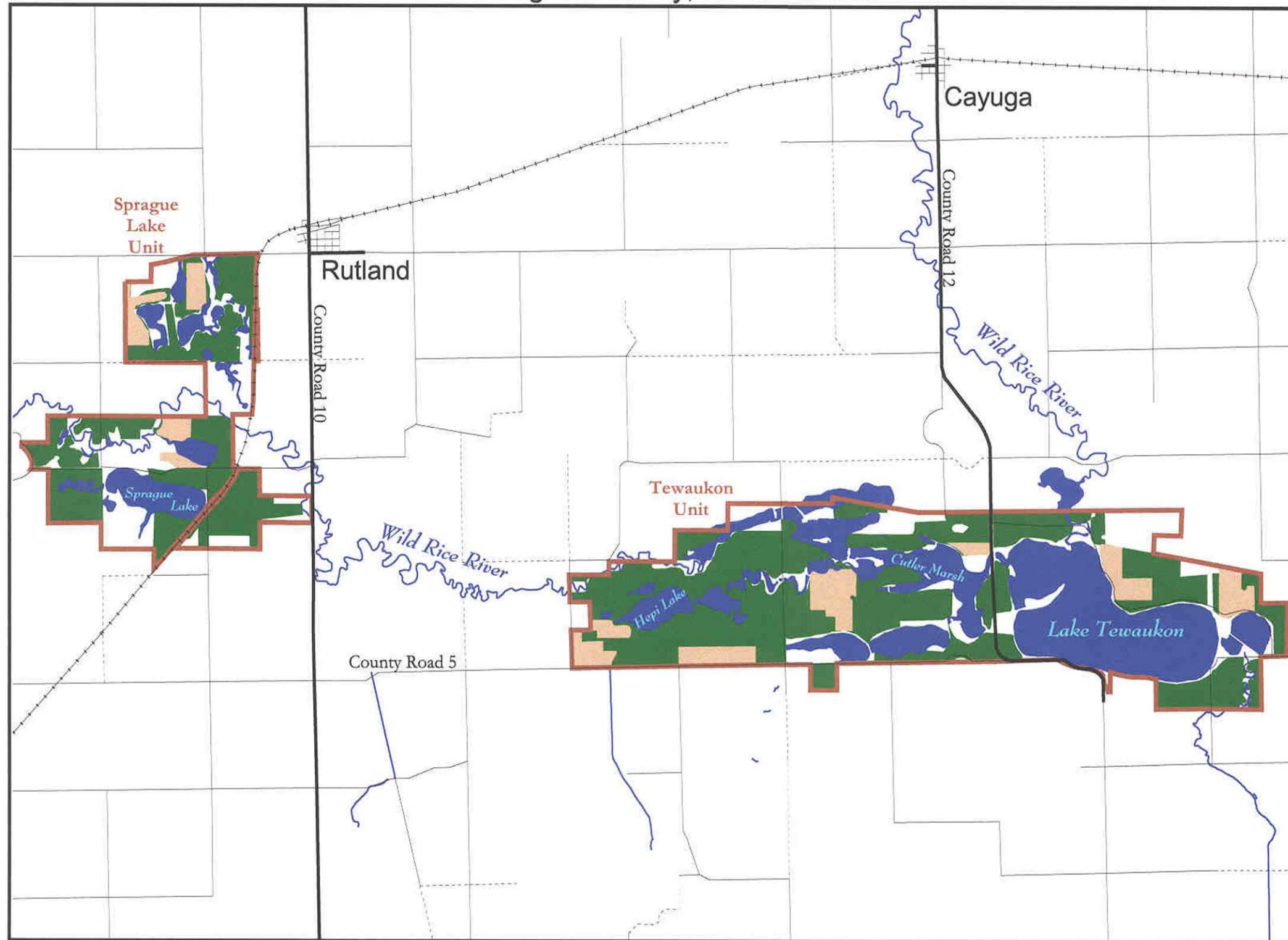
- Prairie focus Areas  
*(Total of 1,594 Acres)*
- Managed Wetlands
- Rivers and Streams
- Road Types**
- Limited Access Trail
- Gravel
- Paved
- /\ Railroad



Map #7 Six Prairie Focus Areas

# Tewaukon National Wildlife Refuge

Sargent County, North Dakota




### Legend

- Historic Cropland**  
(Planted to Grassland Cover)  
*(Total of 3,088 Acres)*
- Current Cropland**  
*(Total of 615 Acres)*
- Managed Wetlands**
- Rivers and Streams**

#### Road Types

- Limited Access Trail
- Gravel
- Paved
- Railroad



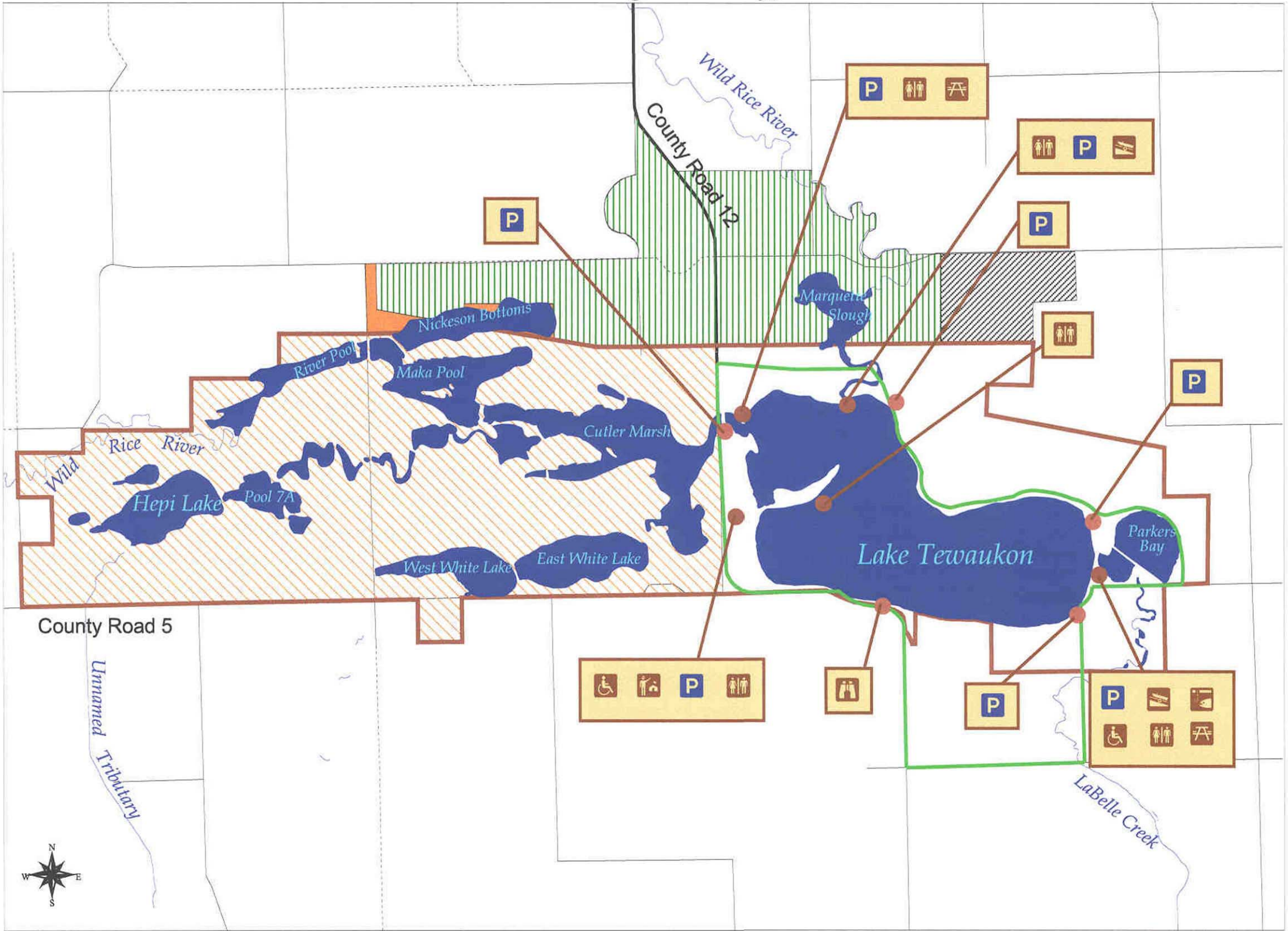


Map #8 Cropland Past and Present



# Tewaukon Unit

Sargent County, North Dakota



### Legend

- Closed Area - Closed to All Public Use January 1 - August 30
- Krause Waterfowl Production Area (Open to Hunting per State Season)
- Nickeson Waterfowl Production Area (Open to Hunting per State Season)
- North Dakota Game and Fish Wildlife Management Area
- Auto Tour Route (Open May 1 through September 30)
- Boat Ramp
- Fishing Access Dock - Bank Fishing Open Year Round
- Refuge Headquarters
- General Parking Area
- Rest Room
- Universally Accessible
- Picnic Area
- Overlook

*Please Consult Refuge Public Use Regulations for Specific Guidelines*

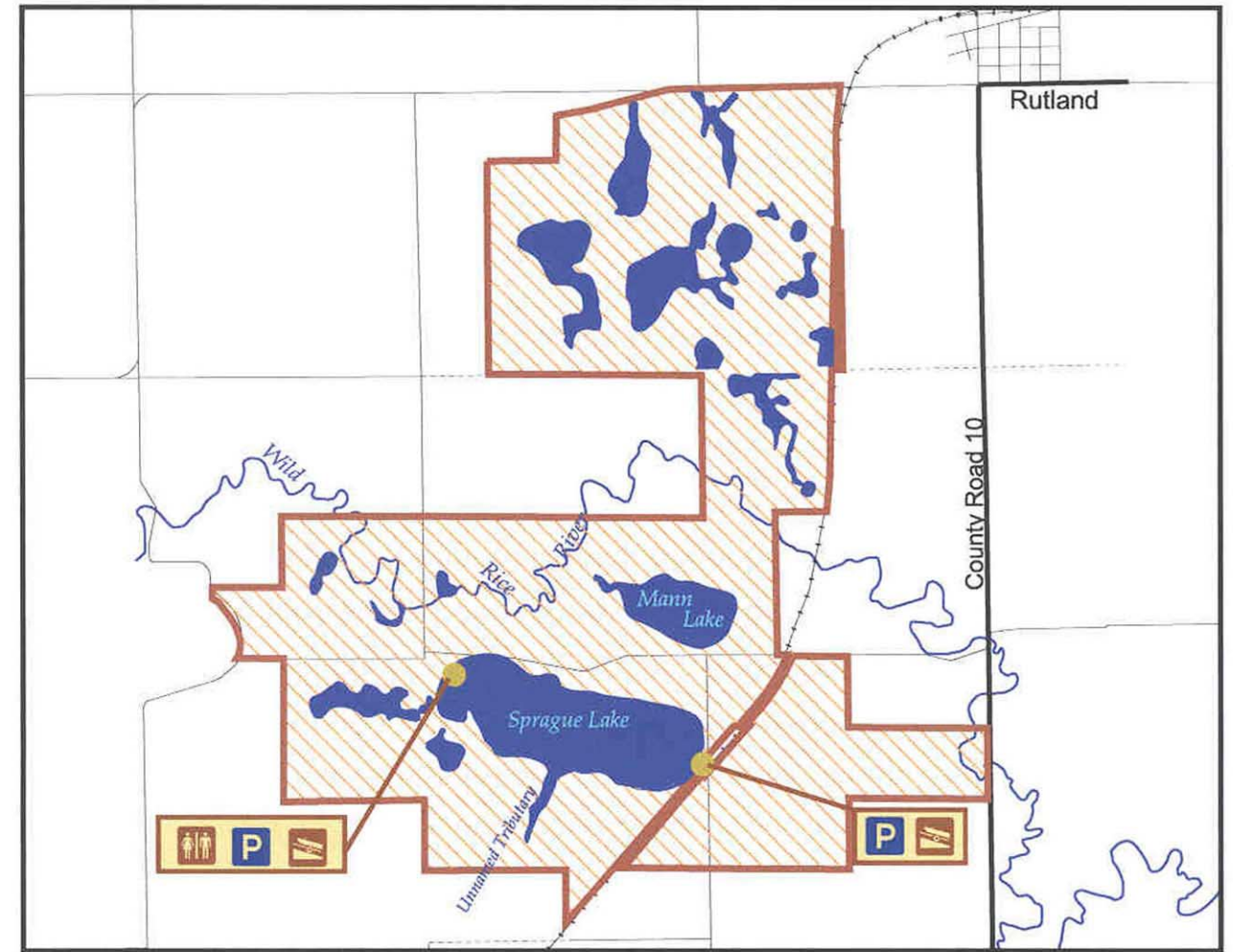


Map #9 Public Use Tewaukon Unit  
**(May-August)**



# Sprague Lake Unit

Sargent County, North Dakota



1 0 1 Miles

**Legend**

Closed Area - Closed to all Public Use January 1 - August 30	General Parking Area
Managed Wetlands	Rest Room
Rivers and Streams	Boat Ramp
<b>Road Types</b>	
Limited Access Trail	
Gravel	
Paved	
Railroad	

*Please Consult Refuge Public Use Regulations for Specific Guidelines*

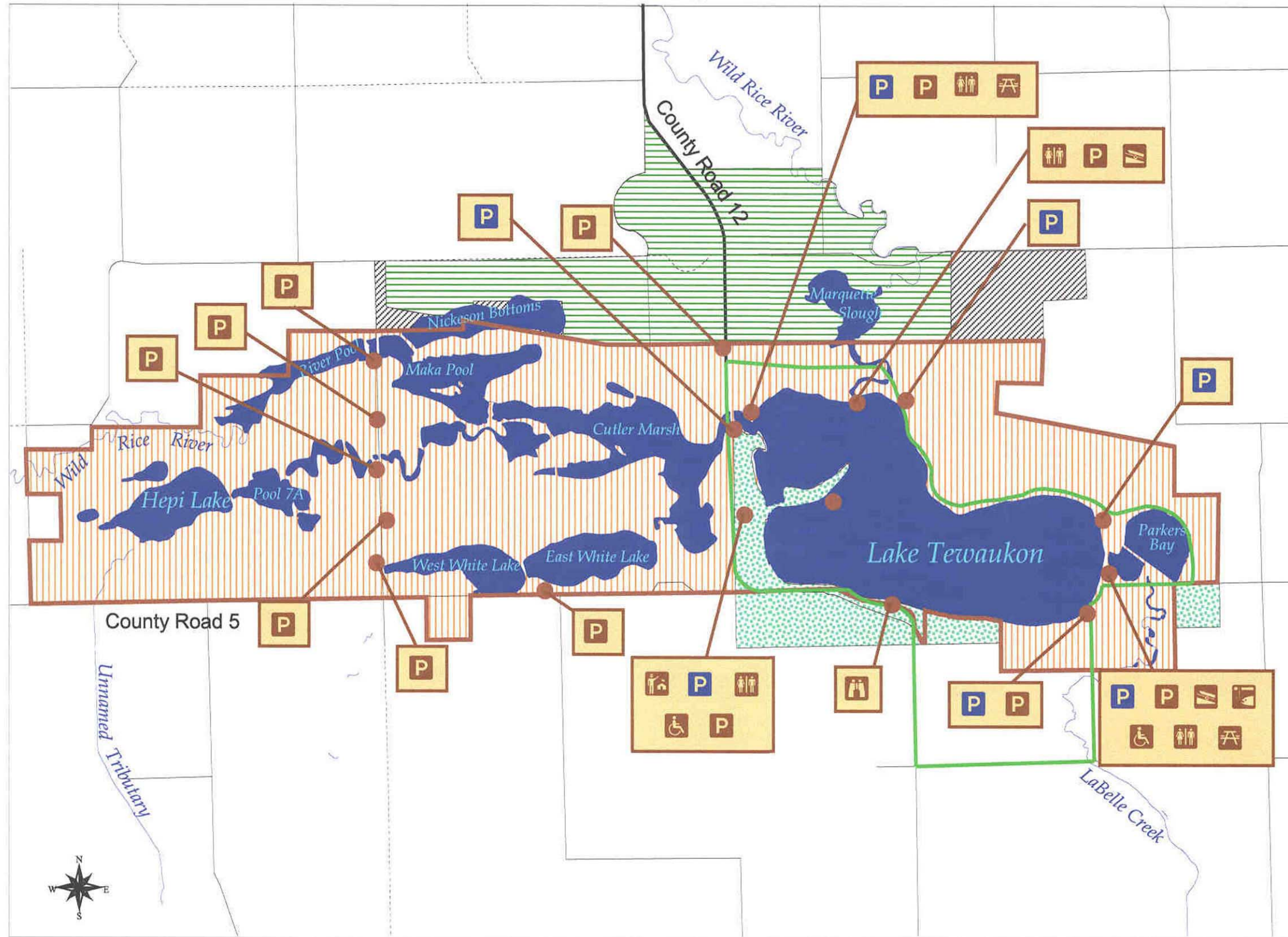


Map #10 Public Use Sprague Lake Unit  
*(May - August)*



# Tewaukon Unit

Sargent County, North Dakota



### Legend

- Public Use Area - Open to Archery in September, Special Permit Deer Hunting in November, and Pheasant Hunting in December
- No Hunting Area
- Waterfowl Production Area (Open to Hunting per State Season)
- North Dakota Game and Fish Wildlife Management Area
- Auto Tour Route (Closed October 1 through April 30)
- Boat Ramp
- Fishing Access Dock
- Refuge Headquarters
- General Parking Area
- Hunting Parking Area
- Rest Room
- Universally Accessible
- Picnic Area
- Overlook

*Please Consult Refuge and State Hunting Regulations for Specific Guidelines*

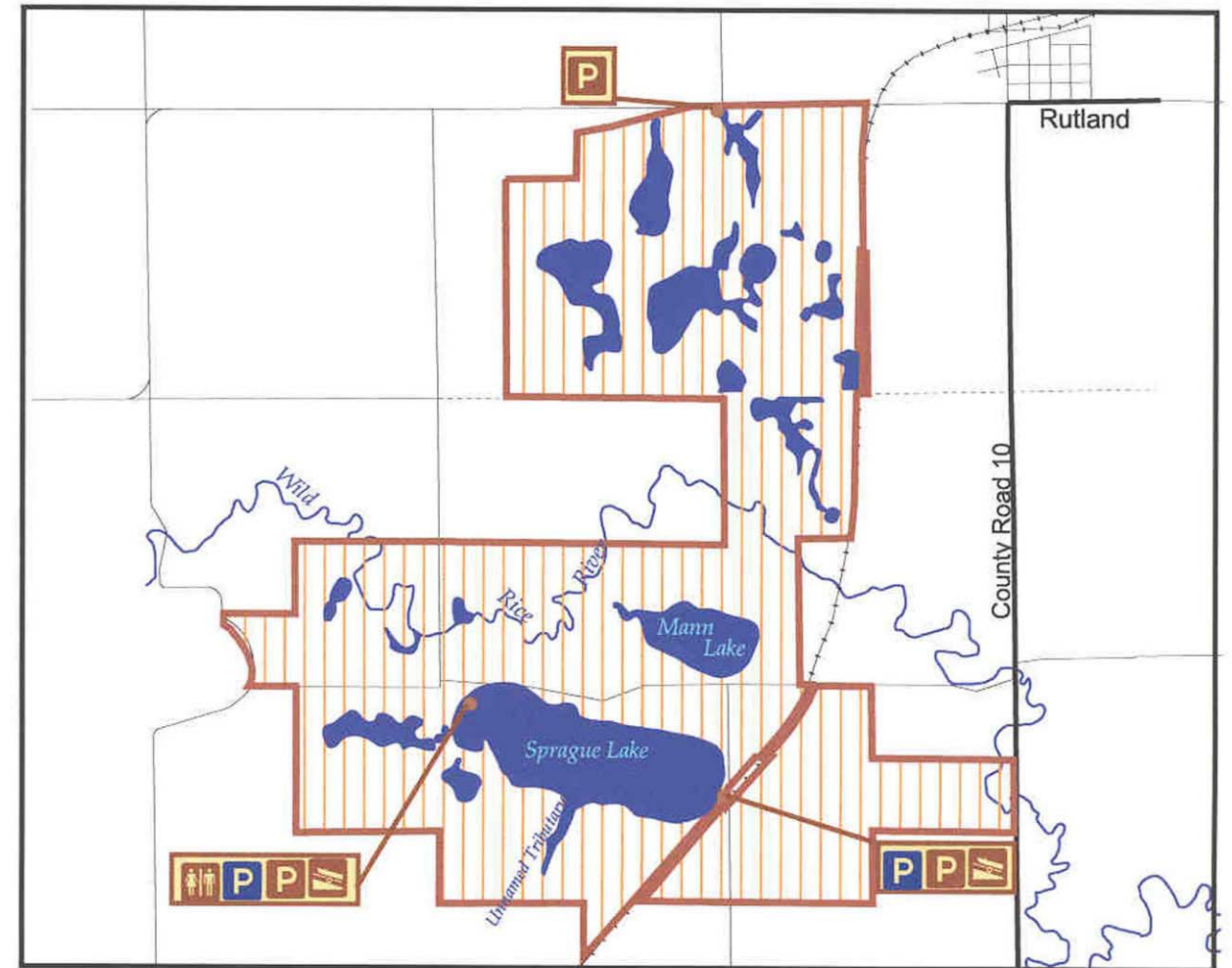


Map #11 Public Use Tewaukon Unit (September-April)



# Sprague Lake Unit

Sargent County, North Dakota



1 0 1 2 Miles



**Legend**

Public Use Area - Open to Archery in September, Special Permit Deer Hunting in November, and Pheasant Hunting in December	General Parking Area
Managed Wetlands	Hunting Parking Area
Rivers and Streams	Rest Room
<b>Road Types</b>	Boat Ramp
Limited Access or Trail	
Gravel	
Paved	
Railroad	

*Please Consult Refuge and State Hunting Regulations for Specific Guidelines*

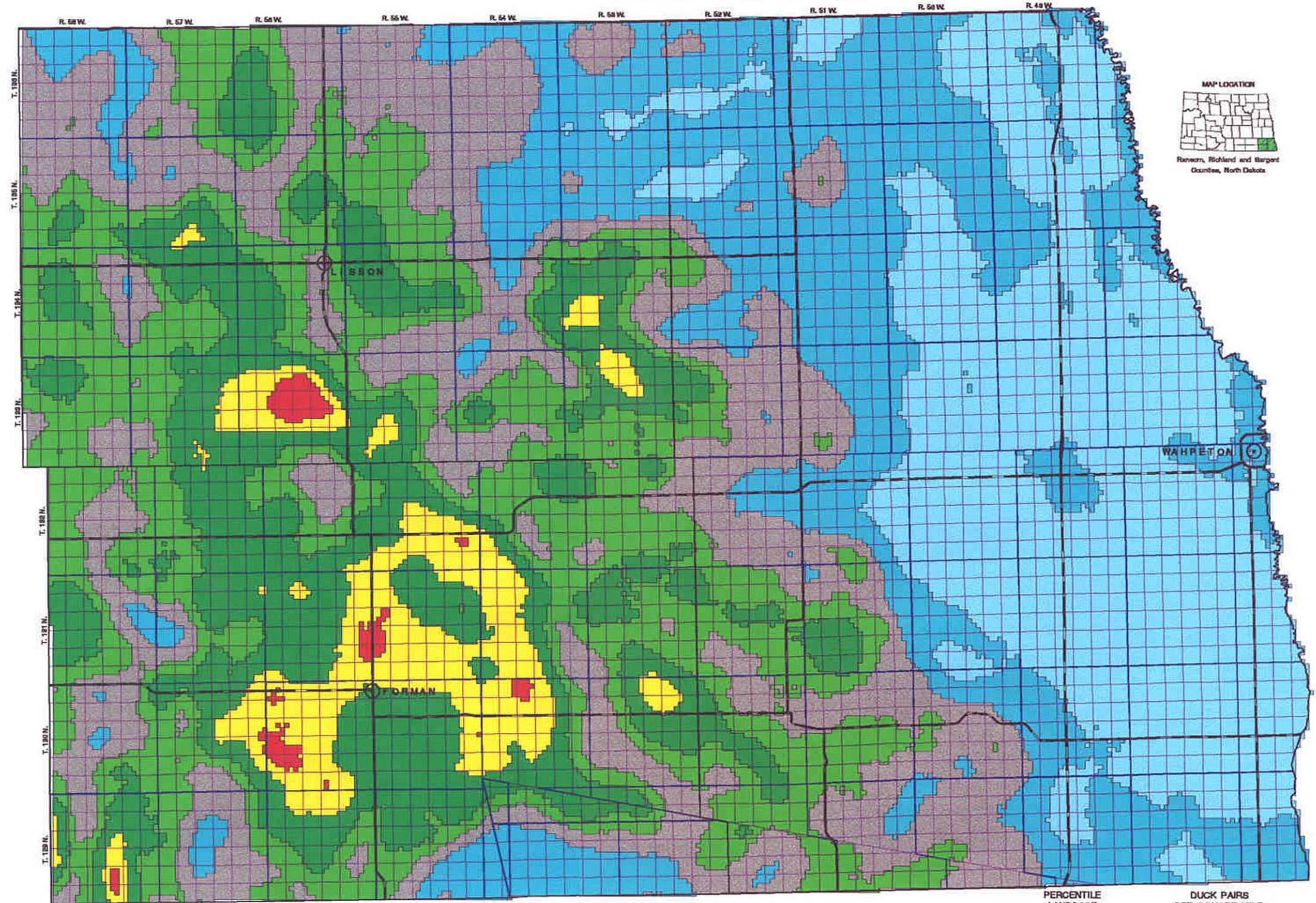


Map #12 Public Use Sprague Lake Unit  
(September - April)



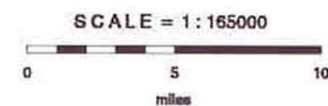
# WATERFOWL BREEDING PAIR DISTRIBUTIONS

## Tewaukon Wetland Management District, North Dakota



Waterfowl pair density information was generated using GIS modeling techniques utilizing USFWS National Wetland Inventory digital data, the USFWS-Region 8 Four Square Mile Survey results, and regression equations predicting duck pair/wetland relationships developed by the USFWS Habitat and Population Evaluation Team and USGS Northern Prairie Wildlife Research Center. The information presented represents the accessibility of 57.58 acre landscape units to the combined predicted breeding pairs for mallard, blue-winged teal, gadwall, pintail, and shoveler. For more information contact the HAPET Office, USFWS, Bismarck, North Dakota.

This map was prepared in September 2000.



Projection : Universal Transverse Mercator, Zone 14

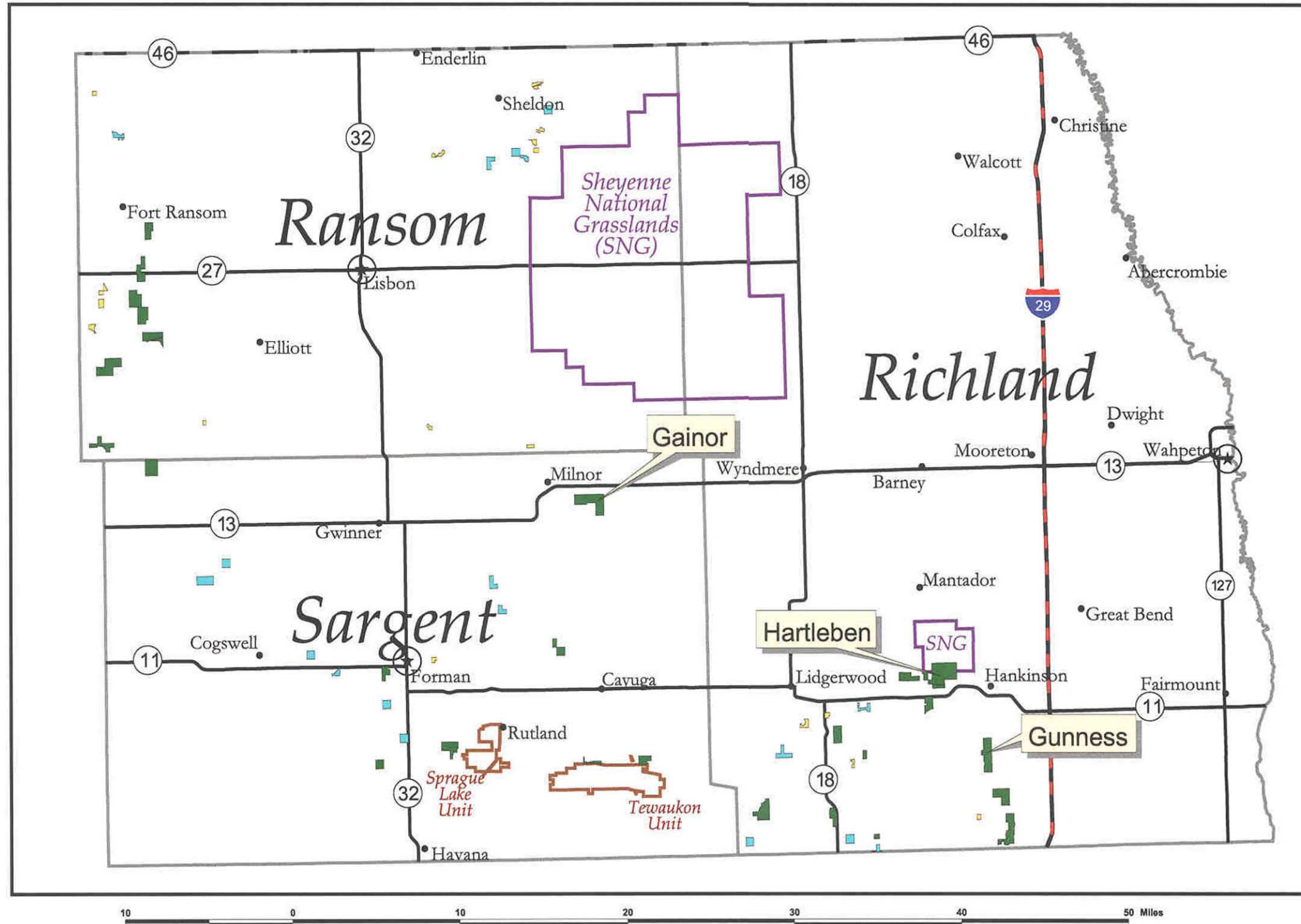
PERCENTILE LANDBASE	DUCK PAIRS PER SQUARE MILE		
	range	mean	
99.5	97 - 117	102	
95	80 - 97	87	
80	54 - 79	64	
60	37 - 53	44	
40	19 - 36	28	
20	6 - 18	10	
0	0 - 5	3	

**Map #13 Potential Waterfowl Pair Densities.**



# Tewaukon Wetland Management District

Ransom, Richland, and Sargent Counties, North Dakota

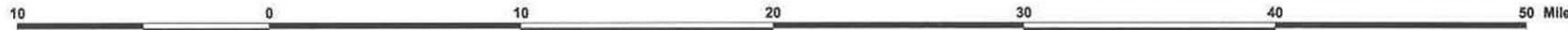


**Legend**

**Waterfowl Production Area Priorities**

- High
- Moderate
- Low

Prairie Focus Areas



Map #14 Waterfowl Production Area Priorities