

Our Mission

Lead and help support sustainable forest management and use of forests across the landscape to provide benefits for the people of the 20 Northeastern and Midwestern States and the District of Columbia.

We Achieve This By ...

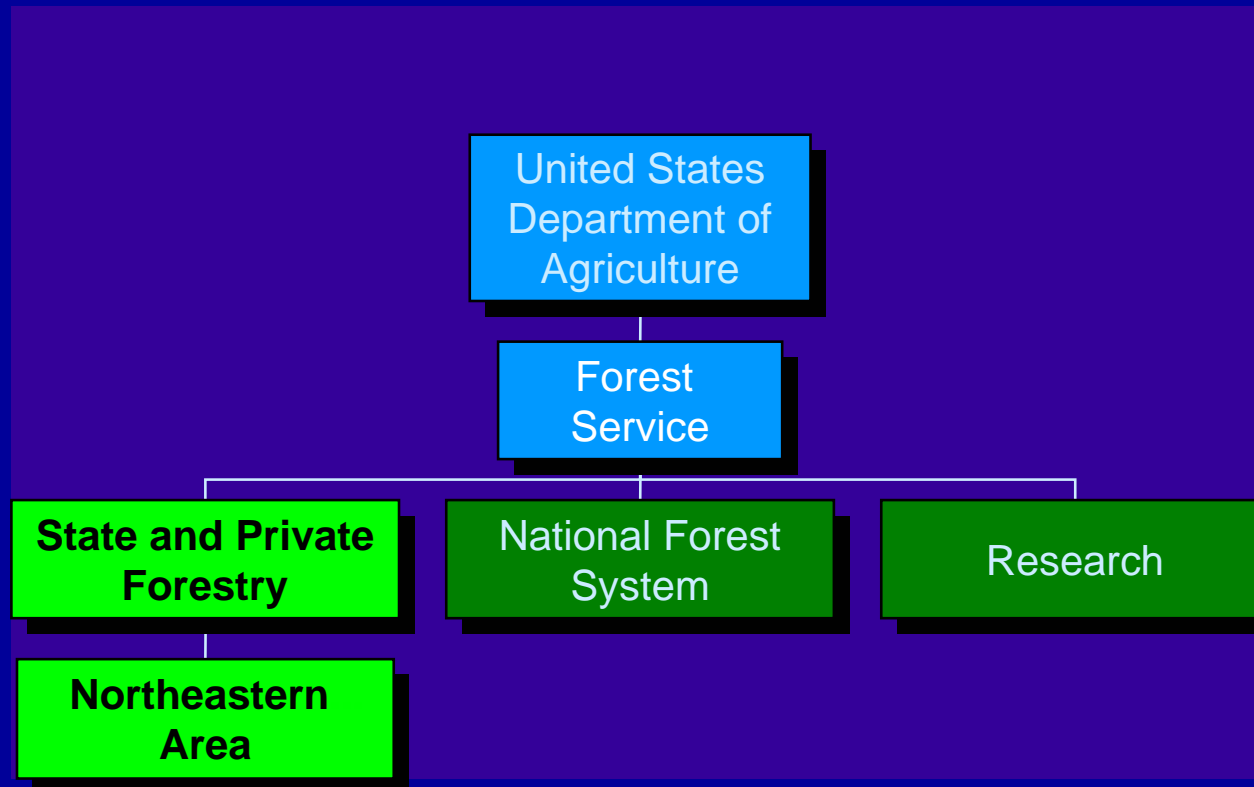
- Providing leading-edge technical assistance,
- Building strong state forestry programs,
- Targeting financial assistance,
- Reducing Federal investments through prevention,
- Monitoring and assessing forest sustainability trends,
- Acting as an information clearinghouse.

Northeastern Area Overview

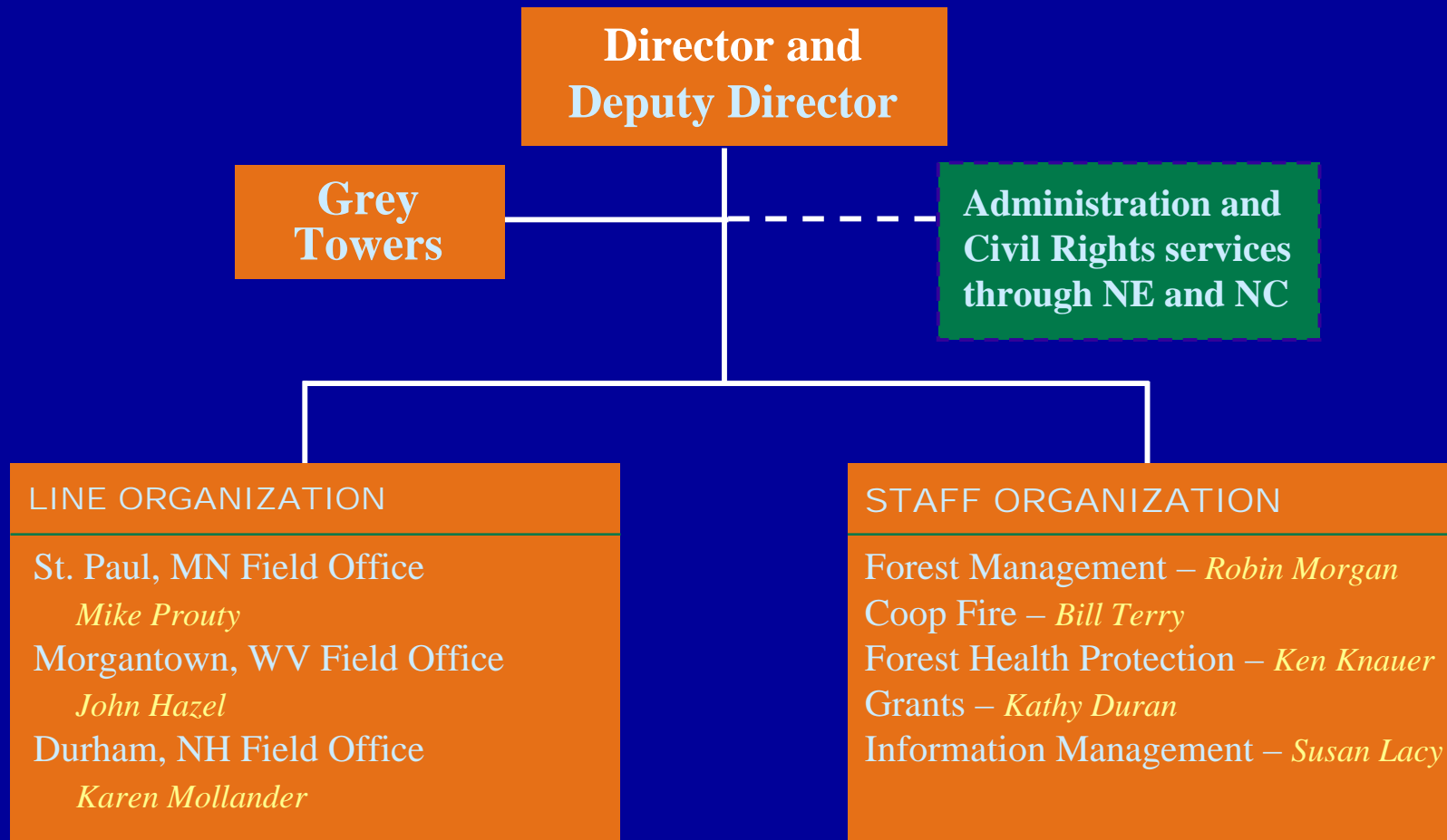
- **Who we are**
- **Who we serve**
- **What we do**
- **How we work**
- **Who cares? (And, why they should!)**

Who We Are

We are Part of the Forest Service



Who We Are



We Serve

The Northeast and Midwest

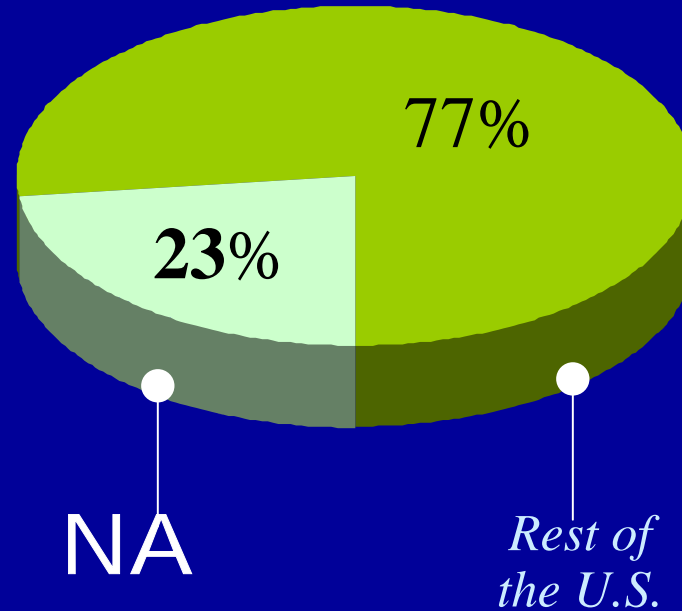


We Serve

- About 4 million private landowners (3.1 million NIPF)
- More than 170 million acres of forest
- More than 120 million people in 20 states
- Nearly 43% of the US population

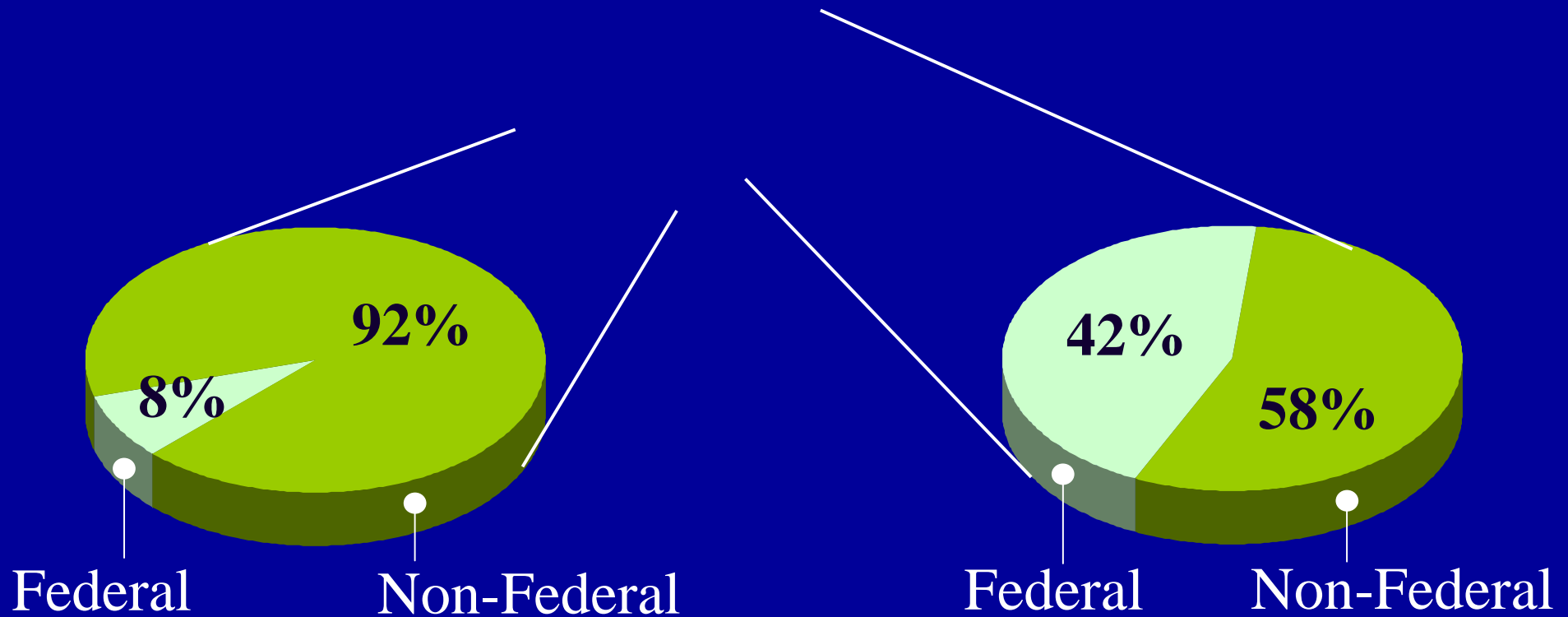
We Serve the Nation's Forest Land

U.S. Forest Land *All Ownerships*



We Serve State and Private (Non-Federal) Forests

U.S. Forest Land *All Ownerships*



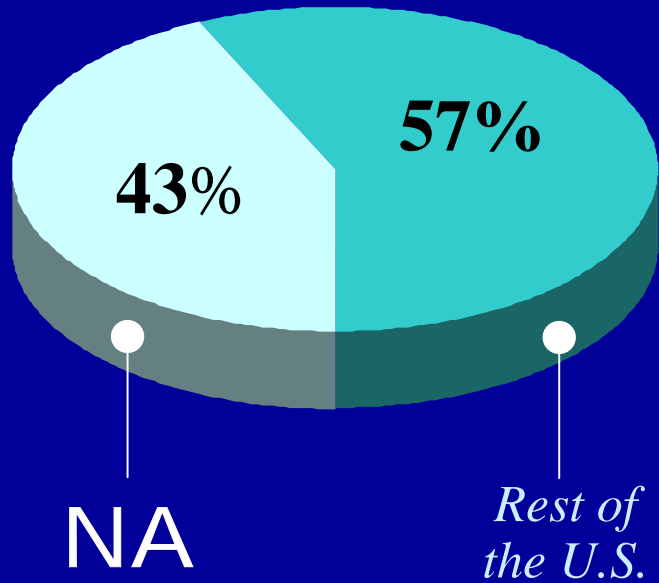
* Forest health support also provided on federal lands

Northeastern Area Overview

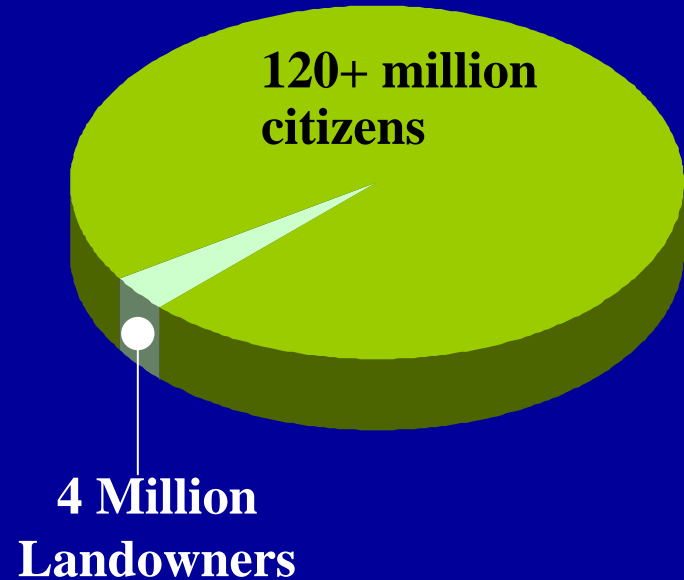


We Serve Millions of Americans

U.S. Population



NA Population



What We Do

Assist States, local governments, and forest landowners

- Protect drinking water
- Sustain healthy forests
- Employ best management practices

What We Do

We have National Responsibilities

- National Information Center – *St. Paul, MN*
- Grey Towers – *Milford, PA*
- Wood Education and Resource Center – *WV*
- Army Environmental Center – *Aberdeen, MD*
- Wood in Transportation – *Morgantown, WV*

How We Work

Our Work is Based on These Guiding Principles:

- Focused investments
- Outcome-driven management
- Partnerships
- Program integration
- Innovative approaches

How We Work

We Use a Variety of Programs



How We Work

We Seek to:

- *Add Value* through
 - Voluntary partnerships and cooperation
 - Non-regulatory assistance
- *Create Opportunity*
 - For people and communities
 - Through improved program delivery

How We Work

Our Emphases for FY 2004:

- Healthy forests
- Sustainable forest management
- Cost-effective assistance
- Homeland security

Healthy Forests Restoration Act, 2003

- Focus on hazardous fuels reduction in communities at risk
- New authorities
 - Utilization
 - Watershed Forestry Assistance
- Emphasis on forest health and reduction of insects and disease

Who Cares? (*Why We Should*)

VALUE from...

- Clean water and air for towns and cities
- Jobs contributing to local economies
- Sustainable forests
- Well-prepared volunteer fire departments
- Better informed forest land owners

Who Cares? (*Why We Should*)

OPPORTUNITY to Achieve...

- **R**esults!
- **E**ffective mgmt. – watersheds and forests
- **S**erve more peoples' needs
- **U**se and extend FS expertise
- **L**everage investments
- **T**rust and credibility
- **S**ustainable forests

The Current NA Budget . . .

FY 2004

. . . Dollars in thousands . . .

Forest Health Management	27,375
Cooperative Fire Management	19,424
Cooperative Forestry	56,648
Grey Towers	1,950
<hr/>	
Total	105,397
Operating Costs	17,293,000
Assessment to NERS/NCRS	2,884,000

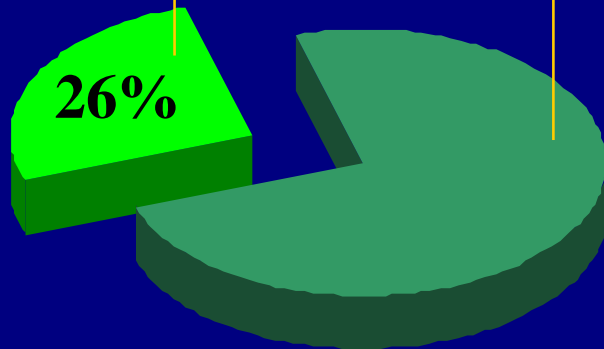
State and Private Forestry Nationwide

Budget

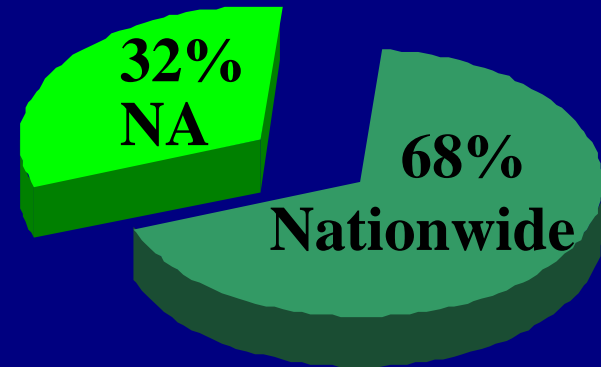
State & Private Forestry

\$407,180,000

\$105,397,000



Nonfederal Land



* Total Forest Service budget (FY04): \$5.264 billion

Northeastern Area Overview



Some Key Outcomes in 2003...

- Leveraged federal investments (estimated **\$10 for every \$1**).
- Placed **632,779** acres of private lands under stewardship.
- Assisted more than **6,546** towns and cities to improve their urban forest resources.
- Protected **65,726** acres through Forest Legacy.
- Monitored **20** states for forest health conditions.
- Assisted **2,452** Rural Volunteer Fire Departments.

The Outlook . . .

- Private Landowners will determine the future of most of America's forests.
- Private lands will continue to outproduce Federal lands.
- Urban forests will contribute more:
 - Livable communities
 - Air quality
 - Energy savings
- Collaboration and partnerships are key.

The Outlook . . .

The Forest Service is focusing on four profound threats to our Nation's forests.

- Fuel and fires,
- Invasive species,
- Fragmentation,
- Unmanaged recreation.

The Northeastern Area wants to make Americans aware of these threats and what we're doing to address them.

Questions?