

PLANT SPECIES OF THE DEEP CREEK MOUNTAINS

by

Cleve Davis

Hymenoxys cooperi var. *canescens*



Photos and graphs shown in black and white in this bulletin can be found in color on the website.

**Idaho Technical Bulletins can be accessed through the Idaho BLM website as follows:
www.id.blm.gov (click on Information, and click on Technical Bulletins)**

**Further information is available from the Idaho State Office BLM,
1387 S. Vinnell Way, Boise, ID 83709. Telephone (208) 373-4018.**

**LANT SPECIES OF THE DEEP
CREEK MOUNTAINS**

by

Cleve Davis

**Bureau of Land Management
Upper Snake River District
Burley Field Office
15 East, 200 South
Burley, ID 83318**

Table of Contents

Introduction	1
Study Area	1
<i>Geology</i>	1
Figure 1: Overview map of the project area including land status.	2
Methods	3
Results	3
<i>Species of Conservation Concern</i>	4
References	4
Table 1: Vascular plants listed in alphabetical order by family.	6
Table 2: Vascular plants listed in alphabetical order by genus.	15

Introduction

Botanical inventories are useful for gathering objective knowledge about plant species, variety and abundance for a wide range of cultural, scientific, and educational purposes. Typical uses of inventories include land use planning, preparing wildlife habitat and grazing plans, environmental assessments (EAs), use in schools and historical documentation. Inventories are also important because they provide data on the distribution and condition of special status species.

Special status plants are species that are normally considered rare and threatened by some type of cultural activity. Plants considered to be of special status include the following: 1) proposed species – species that have been officially proposed for listing as threatened or endangered under the Endangered Species Act by the Secretary of the Interior, 2) listed species – species officially listed as threatened or endangered by the Secretary of the Interior under the provisions of the Endangered Species Act, 3) candidate species – species designated as candidates for listing as threatened or endangered by the U.S. Fish & Wildlife Service, 4) state listed species – species listed by a state in a category implying but not limited to potential endangerment or extinction, and 5) sensitive species are those species designated by a State Director, usually in cooperation with the state agency responsible for managing the species and state Natural Heritage programs, as as sensitive.

Study Area

Although Glennon (1991) studied the flora of the Fort Hall Indian Reseration, only the work of Bauer (1991) on the flora of Deep Creek Peak and this present study have dealt with plant species of the Deep Creek Mountains.

The study area (Figure 1) is located entirely in Power County. The elevation ranges from 1707 m at the base to 2667 m at the top of Deep Creek Peak. The maximum difference in elevation is about 960 m. The study area encompasses approximately 30,200 hectares.

Dominant plant species within the study area include *Pseudotsuga menziesii* (Douglas-fir) and *Pinus contorta* (lodgepole pine) with a small amount of *Abies lasiocarpa* (subalpine-fir) in the higher elevations. On lower, primarily southerly, slopes are stands of *Cercocarpus ledifolius* (curl-leaf mountain mahogany). The rest of the study area is dominated by *Artemisia tridentata* ssp. *vaseyana* (mountain sagebrush) with an understory of *Pseudoroegneria spicata* (blue bunchwheat grass) and/or *Poa pratensis* (Kentucky bluegrass). Knox Creek is the only perennial stream in the study area, but springs and intermittent streams are scattered throughout. Most of the area is grazed.

Geology

The Deep Creek Mountains trend north and south and are located on the northern edge of the Basin and Range physiographic province. The range is bound on the north by Tertiary aged volcanic rocks related to the Snake River Plain. It is characterized by a thick sequence of shallow marine Paleozoic rocks. A variety of limestones of the Pennsylvanian-Permian aged

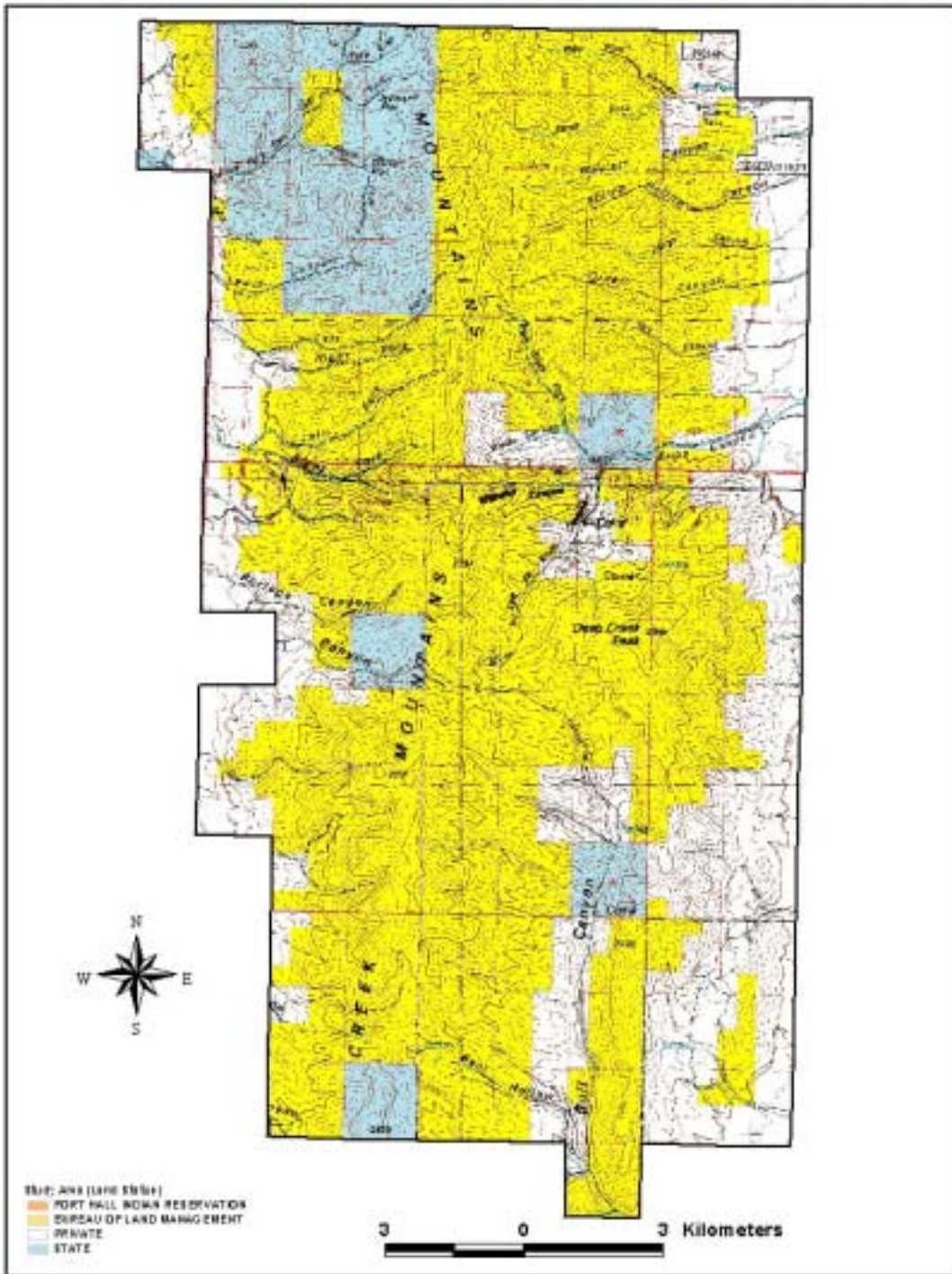


Figure 1: Land status map of the project area.

Oquirrh Formation comprise the majority of the range. It is separated from the valleys by north-south trending Basin and Range style normal faults. Although there are exceptions, the rocks have generally been folded in a gentle syncline where the eastern strata dip gently west and the western strata dip gently east (Stout 2002).

Methods

EAs for several projects in the Deep Creek Mountains including a fiber optic line, weed control and grazing permit renewals necessitated special status plant inventories. Surveys were conducted during the growing season of 2001 and 2002 so an analysis of the effects of these projects on special status plants could be completed. Surveys were conducted by identifying every species encountered while walking through the proposed project area. This flora is a compilation of the species observed during field work for these projects. An additional survey for the *Hymenoxys richardsonii* (Richardson's butterweed), a sensitive species was conducted and the plant list compiled during this survey is included.

The special status plants known to occur or likely to occur within the study area are primarily restricted to rocky outcrops on ridges. Therefore, many of these surveys emphasized rocky outcrops. Knox Creek was also surveyed because riparian areas are also likely places to find special status plants. Unfortunately, Knox Creek has been extensively grazed and wetland biodiversity for this creek was found to be low.

Areas surveyed include: 1) the southeastern ridge from the summit of the Left Fork of Knox Canyon Road to Deep Creek Peak, 2) area along Left Fork of Knox Canyon Road, 3) windswept ridges and Douglas-fir stands north of Deep Creek Peak, 4) northwest ridge approximately 1.5 km from the summit of the Left Fork of Knox Canyon pass, 5) southwestern ridge approximately 2.5 km from the Big Canyon/Bull Canyon Road intersection, 6) area along Bull Canyon Road, 7) area along Bear Hollow Road and western and eastern most ridgeline of the allotment, 8) area along West Fork Canyon Road, 9) area along Green Canyon Road, and 10) ridge from jeep trail north to unnamed summit (2353 m) T10S R32E, Sec 27.

To provide the most comprehensive list of plant species known for the study area, Bauer's 1991 species list of "Medicinal, Edible, Poisonous, and Injurious Flora of Deep Creek Peak" was also incorporated. Bauer's Master's Thesis is the only other extensive botanical inventory for the area not conducted by the author. Taxonomy of plant species within this paper follows USDA-NRCS (2001) and Hitchcock and Cronquist (1961).

Results

The complete species list can be found in Tables 1 and 2. Table 1 lists species alphabetically by family, and Table 2 by genus. A total of 258 species, subspecies, or varieties have been observed and/or collected within the Deep Creek Mountains. These taxa are distributed among 45 families. The family with the greatest amount of diversity was the Asteraceae, with a total of 54 species.

To provide information on the origin of these taxa, native and exotic plants have been assigned either an “N” or “E” in the table. In this paper, exotics are considered to be any plant species introduced since the arrival of non-Native Americans to the area. A total of 46 exotic species were found within the study area.

Species of Conservation Concern

During the inventories two species of conservation concern were observed and documented within the range. *Pediocactus simpsonii* (Simpson’s hedgehog cactus) and *Hymenoxys cooperii* var. *canescens* (ragged-rustlers) were found at higher elevations (~2,100 m – 2,600 m) on windswept limestone ridges and benches. These species have been identified with a “C” in the table.

Pediocactus simpsonii is currently designated by the BLM as a sensitive plant species. Potential threats to this species include over-collection and habitat destruction or degradation (Mancuso & Moseley 1994). *P. simpsonii* occurs from Washington to Wyoming south to Nevada, Arizona, and New Mexico (Welsh et al. 1987). In Idaho, the majority of *P. simpsonii* populations occur in a variety of open, rocky habitats, and across a wide range of elevations (487 m - 2591 m). It is known from canyon ridges, benches and rims at low- to mid-elevations, as well as exposed, mountain ridgecrests. Soils are generally shallow, rocky and well drained. Throughout the state *P. simpsonii* can be associated with a variety of sagebrush, grassland or juniper communities, and can occur on all aspects, although mostly warmer exposures, and from flat to steep slopes (Mancuso & Moseley 1994). During surveys within the study site *P. simpsonii* was found on a couple of rocky ridges within the Bear Hollow grazing allotment. Similar ridges within the allotment could also support this species.

Hymenoxys cooperii var. *canescens* was found during a search for a documented occurrence of *Hymenoxys richardsonii* (Richardson’s butterweed). The author believes the documented occurrence of *H. richardsonii* was misidentified. *Hymenoxys cooperii* var. *canescens* is very closely related to *H. richardsonii*, which was not observed during the course of this study. *Hymenoxys cooperii* var. *canescens* was also found growing in association with *P. simpsonii* in the Bear Hollow allotment. This species is currently considered a review species by the Idaho Native Plant Society. Review species are taxa that may be of conservation concern in Idaho, but which lack sufficient information to base a recommendation regarding their appropriate classification (INPS 2002). This species has also been found in the Pleasantview Mountains southeast of the study area. Further inventories for this species in the Pocatello Field Office area are needed to determine its conservation status in Idaho.

References

- Bauer, N.L. 1991. Medicinal, edible, poisonous, and injurious flora of Deep Creek Peak, Power County, Idaho. Unpublished master’s thesis, Idaho State University, Pocatello, Idaho. 220pp.
- Glennon, J.M. 1991. Flora of the Fort Hall Indian Reservation, Idaho. Unpublished master’s thesis, Idaho State University, Pocatello, Idaho. 91pp.

- Hitchcock, L.C., and A. Cronquist. 1961. Vascular plants of the Pacific Northwest. Part 3: Saxifragaceae to Ericaceae. University of Washington Press, Seattle, Washington.
- Idaho Native Plant Society (INPS). 2002. Results of the eighteenth annual Idaho Rare Plant Conference. Boise, Idaho. 8pp.
- Mancuso, M., and R. Moseley. 1994. Vegetation description, rare plant inventory, and vegetation monitoring for Craig Mountain, Idaho. Idaho Department of Fish and Game, Natural Resource Policy Bureau. Boise, Idaho.
- Stout, W. 2002. Personal communication. Bureau of Land Management, Pocatello, Idaho.
- USDA, NRCS. 2001. The PLANTS database, Version 3.1 (<http://plants.usda.gov>). National Plant Data Center, Baton Rouge, LA. 70874-4490 USA.
- Welsh, S.L., N.D. Atwood, S. Goodrich, and L.C. Higgins. 1987. Great Basin naturalist's memoirs, a Utah flora. Brigham Young University, Provo, Utah. 894pp.

Table 1: Species list of vascular plants known to occur within the Deep Creek Mountains of southeast Idaho. Listed in alphabetical order by family. (N = Native; E = Exotic; C = Species of Conservation Concern)

Family	Scientific Name	Common Name	Status
Aceraceae	<i>Acer glabrum</i> Torr.	Rock Mountain maple	N
Amaranthaceae	<i>Amaranthus albus</i> L.	Prostrate pigweed	E
Apiaceae	<i>Lomatium dissectum</i> (Nutt.) Mathias & Constance	Fernleaf biscuitroot	N
Apiaceae	<i>Lomatium foeniculaceum</i> (Nutt.) Coult. & Rose	Desert biscuitroot	N
Apiaceae	<i>Lomatium triternatum</i> (Pursh) Coult. & Rose	Nineleaf biscuitroot	N
Apiaceae	<i>Osmorhiza berteroi</i> DC.	Sweetcicely	N
Apiaceae	<i>Osmorhiza occidentalis</i> (Nutt. ex Torr. & Gray) Torr.	Western sweetroot	N
Apiaceae	<i>Pteryxia terebinthina</i> (Hook.) Coult. & Rose var. <i>foeniculacea</i> (Nutt. ex Torr. & Gray) Mathias	Turpentine wavewing	N
Asteraceae	<i>Achillea millefolium</i> L.	Common yarrow	N
Asteraceae	<i>Agoseris aurantiaca</i> (Hook.) Greene	Orange agoseris	N
Asteraceae	<i>Agoseris glauca</i> (Pursh) Raf. var. <i>laciniata</i> (D.C. Eat.) Smiley	False-agoseris	N
Asteraceae	<i>Antennaria dimorpha</i> (Nutt.) Torr. & Gray	Low pussytoes	N
Asteraceae	<i>Antennaria microphylla</i> Rydb.	Littleleaf pussytoes	N
Asteraceae	<i>Arnica cordifolia</i> Hook.	Heartleaf arnica	N
Asteraceae	<i>Artemisia arbuscula</i> Nutt.	Dwarf sagebrush	N
Asteraceae	<i>Artemisia dracunculus</i> L.	Tarragon	N
Asteraceae	<i>Artemisia lindleyana</i> Bess.	Columbia River wormwood	N
Asteraceae	<i>Artemisia ludoviciana</i> Nutt.	Prairie sage	N
Asteraceae	<i>Artemisia nova</i> A. Nels.	Black sagebrush	N
Asteraceae	<i>Artemisia tridentata</i> Nutt. ssp. <i>Tridentata</i>	Basin big sagebrush	N
Asteraceae	<i>Artemisia tridentata</i> Nutt. ssp. <i>vaseyana</i> (Rydb.) Boivin	Mountain big sagebrush	N
Asteraceae	<i>Balsamorhiza hookeri</i> Nutt.	Hooker's balsamroot	N
Asteraceae	<i>Balsamorhiza macrophylla</i> Nutt.	Big-leaf balsamroot	N
Asteraceae	<i>Balsamorhiza sagittata</i> (Pursh) Nutt.	Arrowleaf balsamroot	N
Asteraceae	<i>Chaenactis douglasii</i> (Hook.) Hook. & Arn.	Douglas' dustymaiden	N
Asteraceae	<i>Chrysothamnus viscidiflorus</i> (Hook.) Nutt.	Green rabbitbrush	N
Asteraceae	<i>Cirsium arvense</i> (L.) Scop.	Canada thistle	E
Asteraceae	<i>Cirsium utahense</i> Petr.	Utah thistle	N

Asteraceae	<i>Cirsium vulgare</i> (Savi) Ten..	Bull thistle	E
Asteraceae	<i>Crepis acuminata</i> Nutt.	Tapertip hawksbeard	N
Asteraceae	<i>Crepis occidentalis</i> Nutt.	Western hawksbeard	N
Asteraceae	<i>Ericameria nauseosa</i> (Pallas ex Pursh) Nesom & Baird	Gray rabbitbrush	N
Asteraceae	<i>Erigeron compositus</i> Pursh	Cutleaf daisy	N
Asteraceae	<i>Erigeron pumilus</i> Nutt.	Shaggy fleabane	N
Asteraceae	<i>Erigeron speciosus</i> (Lindl.) DC.	Aspen fleabane	N
Asteraceae	<i>Eriophyllum lanatum</i> (Pursh) Forbes	Oregon sunshine	N
Asteraceae	<i>Eucephalus elegans</i> Nutt.	Elegant aster	N
Asteraceae	<i>Eucephalus engelmannii</i> (D.C. Eat.) Greene	Engelmann's aster	N
Asteraceae	<i>Grindelia squarrosa</i> (Pursh) Dunal	Curlycup gumweed	N
Asteraceae	<i>Gutierrezia sarothrae</i> (Pursh) Britt. & Rusby	Broom snakeweed	N
Asteraceae	<i>Helianthella uniflora</i>	Rocky Mountain helianthella	N
Asteraceae	<i>Heliomeris multiflora</i> Nutt.	Showy goldeneye	N
Asteraceae	<i>Hieracium albiflorum</i> Hook.	White hawkweed	N
Asteraceae	<i>Hymenoxys cooperi</i> (Gray) Cockerell var. <i>canescens</i> (D.C. Eat.) Parker	Cooper's rubberweed	N, C
Asteraceae	<i>Lactuca serriola</i> L.	Prickly lettuce	E
Asteraceae	<i>Machaeranthera canescens</i> (Pursh) Gray	Hoary aster	N
Asteraceae	<i>Matricaria discoidea</i> DC.	Pineapple weed	N
Asteraceae	<i>Nothocalais troximoides</i> (Gray) Greene	False-agoseris	N
Asteraceae	<i>Packera cana</i> (Hook.) W.A. Weber & A. L"ve	Wooly groundsel	N
Asteraceae	<i>Packera debilis</i> (Nutt.) W.A. Weber & A. L"ve	Weak groundsel	N
Asteraceae	<i>Packera indecora</i> (Greene) A.&D. L"ve	Rayless mountain butterweed	N
Asteraceae	<i>Packera multilobata</i> (Torr. & Gray ex Gray) W.A. Weber & A.L"ve	Lobeleaf groundsel	N
Asteraceae	<i>Packera paupercula</i> (Michx.) A.&D. L"ve	Balsam groundsel	N
Asteraceae	<i>Packera streptanthifolia</i> (Greene) W.A. Weber & A. L"ve	Rocky Mountain groundsel	N
Asteraceae	<i>Rudbeckia occidentalis</i> Nutt.	Western coneflower	N
Asteraceae	<i>Senecio serra</i> Hook.	Tall ragwort	N
Asteraceae	<i>Sisymbrium altissimum</i> L.	Tumblemustard	E
Asteraceae	<i>Solidago canadensis</i> L.	Canada goldenrod	N
Asteraceae	<i>Stenotus acaulis</i> (Nutt.) Nutt.	Stemless goldenweed	N
Asteraceae	<i>Symphotrichum spathulatum</i> (Lindl.) Nesom	Western mountain aster	N

Asteraceae	<i>Taraxacum officinale</i> G.H. Weber ex Wiggers	Common dandelion	E
Asteraceae	<i>Tetradymia canescens</i> DC.	Gray horsebrush	N
Asteraceae	<i>Tragopogon dubius</i> Scop.	Yellow salsify	E
Asteraceae	<i>Wyethia amplexicaulis</i> (Nutt.) Nutt.	Mule's ears	N
Berberidaceae	<i>Mahonia repens</i> (Lindl.) G. Don	Creeping oregon grape	N
Boraginaceae	<i>Amsinckia menziesii</i> (Lehm.) A. Nels. & J.F. Macbr.	Menzies' fiddleneck	N
Boraginaceae	<i>Asperugo procumbens</i> L.	Catchweed	E
Boraginaceae	<i>Cryptantha humilis</i> (Gray) Payson	Roundspike cryptantha	N
Boraginaceae	<i>Cryptantha scoparia</i> A. Nels.	Desert cryptantha	N
Boraginaceae	<i>Cryptantha spiculifera</i> (Piper) Payson	Snake River cryptantha	N
Boraginaceae	<i>Cryptantha torreyana</i> (Gray) Greene	Torrey's cryptantha	N
Boraginaceae	<i>Cynoglossum officinale</i> L.	Hound's-tongue	E
Boraginaceae	<i>Hackelia deflexa</i> (Wahlenb.) Opiz var. <i>americana</i> (Gray) A. & D. L'Ve	American stickseed	N
Boraginaceae	<i>Hackelia floribunda</i> (Lehm.) I. M. Johnston	Manyflowered stickseed	N
Boraginaceae	<i>Hackelia patens</i> (Nutt.) I.M. Johnston var. <i>patens</i>	Spreading stickseed	N
Boraginaceae	<i>Lappula occidentalis</i> (S.Wats.) Greene	Western stickseed	N
Boraginaceae	<i>Lappula squarrosa</i> (Retz.) Dumort.	European stickseed	E
Boraginaceae	<i>Lithospermum ruderales</i> Dougl. ex Lehm.	Stoneseed	N
Boraginaceae	<i>Mertensia oblongifolia</i> (Nutt.) G. Don	Leafy bluebells	N
Boraginaceae	<i>Plagiobothrys scouleri</i> (Hook. & Arn.) I.M. Johnston	Scouler's popcornflower	N
Brassicaceae	<i>Arabis glabra</i> (L.) Bernh.	Tower rockcress	N
Brassicaceae	<i>Arabis holboellii</i> Hornem.	Holboell's rockcress	N
Brassicaceae	<i>Arabis lignifera</i> A. Nels	Wooden-branched rockcress	N
Brassicaceae	<i>Camelina microcarpa</i> DC.	Littlepod flase flax	E
Brassicaceae	<i>Capsella bursa-pastoris</i> (L.) Medik.	Sheperd's purse	E
Brassicaceae	<i>Cardaria draba</i> (L.) Desv.	Whitetop	E
Brassicaceae	<i>Chorispora tenella</i> (Pallas) DC.	Blue mustard	E
Brassicaceae	<i>Conringia orientalis</i> (L.) Dumort.	Hare's-ear mustard	E
Brassicaceae	<i>Descurainia californica</i> (Gray) O.E. Schulz	Sierra tansymustard	N
Brassicaceae	<i>Descurainia incana</i> (Bernh. Ex Fisch. & C.A. Mey.) Dorn	Mountain tansymustard	N
Brassicaceae	<i>Descurainia sophia</i> (L.) Webb ex Pranti	Flixweed	E
Brassicaceae	<i>Erysimum capitatum</i> (Dougl. ex Hook) Greene	Rough wallflower	N

Brassicaceae	<i>Lepidium virginicum</i> L. var. <i>pubescens</i> (Greene) Thellung	Hairy pepperweed	E
Brassicaceae	<i>Lesquerella occidentalis</i> S. Wats	Western bladderpod	N
Brassicaceae	<i>Thlaspi montanum</i> L.	Field pennycress	E
Cactaceae	<i>Opuntia polyacantha</i> Haw.	Starvation cholla	N
Cactaceae	<i>Pediocactus simpsonii</i> (Engelm.) Britt. & Rose	Simpson's hedgehog cactus	N, C
Caprifoliaceae	<i>Sambucus nigra</i> L. ssp. <i>cerulea</i> (Raf.) R. Bolli	Blue elderberry	N
Caprifoliaceae	<i>Symphoricarpos oreophilus</i>	Mountain snowberry	N
Caryophyllaceae	<i>Arenaria capillaris</i> Poir.	Slender mountain sandwort	N
Caryophyllaceae	<i>Arenaria kingi</i> (Wats) M.E. Jones ssp. <i>uintahensis</i> (A. Nels.) Majuire	Utah sandwort	N
Caryophyllaceae	<i>Pseudostellaria jamesiana</i> (Torr.) W.A. Weber & R.L. Hartman	Tuber starwort	N
Caryophyllaceae	<i>Silene menziesii</i> Hook.	Menzies' silene	N
Caryophyllaceae	<i>Spergularia rubra</i> (L.) J.& K. Presl	Red sandspurry	E
Chenopodiaceae	<i>Salsola tragus</i> L.	Russian thistle	E
Convolvulaceae	<i>Convolvulus arvensis</i> L.	Field bindweed	E
Crassulaceae	<i>Sedum lanceolatum</i> Torr.	Lanceleaf stonecrop	N
Cupressaceae	<i>Juniperus communis</i> L.	Common juniper	N
Cupressaceae	<i>Juniperus osteosperma</i> (Torr.) Little	Utah juniper	N
Cupressaceae	<i>Juniperus scopulorum</i> Sarg.	Rocky Mountain juniper	N
Cyperaceae	<i>Carex geyeri</i> Boott	Geyer's sedge	N
Cyperaceae	<i>Carex hoodii</i> Boott	Hood sedge	N
Cyperaceae	<i>Carex microptera</i> Mackenzie	Smallwing sedge	N
Cyperaceae	<i>Carex multcosta</i> Mackenzie	Manyrib sedge	N
Cyperaceae	<i>Carex pachystachya</i> Cham.	Thick-headed sedge	N
Ericaceae	<i>Orthilia secunda</i> (L.) House	One-sided wintergreen	N
Ericaceae	<i>Pterospora andromedea</i> Nutt.	Woodland pinedrops	N
Fabaceae	<i>Astragalus agrestis</i> Dougl. ex G.Don	Purple milkvetch	N
Fabaceae	<i>Astragalus cibarius</i> Sheldon	Browse milkvetch	N
Fabaceae	<i>Astragalus convallarius</i> Greene	Lesser rushy milkvetch	N
Fabaceae	<i>Astragalus purshii</i> Dougl. ex Hook.	Wooly-pod milkvetch	N
Fabaceae	<i>Astragalus spatulatus</i> Sheldon	Tufted milkvetch	N
Fabaceae	<i>Lupinus argenteus</i> Pursh	Silvery lupine	N
Fabaceae	<i>Lupinus caudatus</i> Kell.	Tailcup lupine	N

Fabaceae	<i>Lupinus parviflorus</i> Nutt. ex Hook. & Arn.	Lodgepole lupine	N
Fabaceae	<i>Lupinus sericeus</i> Pursh	Silky lupine	N
Fabaceae	<i>Medicago lupulina</i> L.	Black medic	E
Fabaceae	<i>Medicago sativa</i> L.	Alfalfa	E
Fabaceae	<i>Melilotus alba</i> Desr.	White sweet-clover	E
Fabaceae	<i>Melilotus officinalis</i> (L.) Lam.	Yellow sweetclover	E
Fabaceae	<i>Trifolium pratense</i> L.	Red clover	E
Fabaceae	<i>Trifolium repens</i> L.	White clover	E
Geraniaceae	<i>Erodium cicutarium</i> (L.) L'H,r. ex Ait.	Stork's bill	E
Geraniaceae	<i>Geranium viscosissimum</i> Fisch. & C.A. Mey. ex C.A. Mey.	Sticky purple geranium	N
Grossulariaceae	<i>Ribes cereum</i> Dougl.	Wax currant	N
Grossulariaceae	<i>Ribes montigenum</i> McClatchie	Gooseberry currant	N
Grossulariaceae	<i>Ribes viscosissimum</i> Pursh	Sticky currant	N
Hydrophyllaceae	<i>Hydrophyllum capitatum</i> Dougl. ex Benth.	Ballhead waterleaf	N
Hydrophyllaceae	<i>Hydrophyllum occidentale</i> (S. Wats.) Gray	Western waterleaf	N
Hydrophyllaceae	<i>Nemophila breviflora</i>	Great Basin nemophila	N
Hydrophyllaceae	<i>Phacelia hastata</i> Dougl. ex. Lehm.	Silverleaf phacelia	N
Lamiaceae	<i>Agastache urticifolia</i> (Benth.) Kuntze	Nettle-leaf horsemint	N
Liliaceae	<i>Allium acuminatum</i> Hook.	Tapertip onion	N
Liliaceae	<i>Calochortus nuttallii</i> Torr. & Gray	Sego lily	N
Liliaceae	<i>Disporum trachycarpum</i> (S.Wats.) Benth. & Hook. f.	Roughfruit fairybells	N
Liliaceae	<i>Fritillaria atropurpurea</i> Nutt.	Chocolate lily	N
Liliaceae	<i>Fritillaria pudica</i> (Pursh) Spreng.	Yellow bells	N
Liliaceae	<i>Maianthemum stellatum</i> (L.) Link	Starry solomon-plume	N
Liliaceae	<i>Zigadenus paniculatus</i> (Nutt.) S. Wats.	Foothill deathcamas	N
Linaceae	<i>Linum lewisii</i> Pursh	Blue flax	N
Loasaceae	<i>Mentzelia albicaulis</i> (Dougl. ex Hook.) Dougl. ex Torr. & Gray	Whitestem blazingstar	N
Malvaceae	<i>Iliamna rivularis</i> (Dougl. ex Hook.) Greene	Mountain hollyhock	N
Onagraceae	<i>Chamerion angustifolium</i> (L.) Holub	Fireweed	N
Onagraceae	<i>Clarkia rhomboidea</i> Dougl. ex Hook	Diamond clarkia	N
Onagraceae	<i>Epilobium brachycarpum</i> K. Presl	Tall annual willowherb	N
Onagraceae	<i>Epilobium lactiflorum</i> Hausskn.	Milkflower willowherb	N

Onagraceae	<i>Epilobium minutum</i> Lindl. ex Lehm.	Chaparral willowherb	N
Onagraceae	<i>Oenothera caespitosa</i> Nutt.	Tufted evening-primrose	N
Orchidaceae	<i>Piperia unalascensis</i> (Spreng.) Rydb.	Slender-spire orchid	N
Pinaceae	<i>Abies lasiocarpa</i> (Hook.) Nutt.	Subalpine fir	N
Pinaceae	<i>Pinus contorta</i> Dougl. ex Loud.	Lodgepole pine	N
Pinaceae	<i>Pseudotsuga menziesii</i> (Raf.) Sudw.	Douglas-fir	N
Plantaginaceae	<i>Plantago major</i> L.	Common plantain	E
Poaceae	<i>Achnatherum nelsonii</i> (Scribn.) Barkworth ssp. <i>dorei</i> (Barkworth & Maze) Barkworth	Dore's needlegrass	N
Poaceae	<i>Agropyron cristatum</i> (L.) Gaertn.	Crested wheatgrass	E
Poaceae	<i>Agrostis scabra</i> Willd.	Rough bentgrass	N
Poaceae	<i>Bromus commutatus</i> Schrad.	Hairy brome	E
Poaceae	<i>Bromus inermis</i> Leyss.	Smooth brome	E
Poaceae	<i>Bromus tectorum</i> L.	Cheatgrass	E
Poaceae	<i>Calamagrostis purpurascens</i> R. Br.	Pinegrass	N
Poaceae	<i>Calamagrostis rubescens</i> Buckl.	Pinegrass	N
Poaceae	<i>Dactylis glomerata</i> L.	Orchardgrass	E
Poaceae	<i>Deschampsia elongata</i> (Hook.) Munro	Slender hairgrass	N
Poaceae	<i>Elymus elymoides</i> (Raf.) Swezey	Squirreltail	N
Poaceae	<i>Elymus glaucus</i> Buckl.	Blue wildrye	N
Poaceae	<i>Elymus repens</i> (L.) Gould	Quackgrass	E
Poaceae	<i>Glyceria grandis</i> S. Wats.	American mannagrass	N
Poaceae	<i>Hesperostipa comata</i> (Trin. & Rupr.) Barkworth	Needle-and-thread	N
Poaceae	<i>Hordeum jubatum</i> L.	Foxtail barley	N
Poaceae	<i>Koeleria macrantha</i> (Ledeb.) J.A. Schultes	Prairie junegrass	N
Poaceae	<i>Leucopoa kingii</i> (S. Wats.) W.A. Weber	Spike fescue	N
Poaceae	<i>Leymus cinereus</i> (Scribn. & Merr.) A. L'Ve	Basin wildrye	N
Poaceae	<i>Melica bulbosa</i> Geyer ex Porter & Coult.	Oniongrass	N
Poaceae	<i>Pascopyrum smithii</i> (Rydb.) A. L'Ve	Western wheatgrass	N
Poaceae	<i>Phleum pratensis</i> L.	Timothy	E
Poaceae	<i>Poa arnowiae</i> Soreng, ined.	Wasatch bluegrass	N
Poaceae	<i>Poa bulbosa</i> L.	Bulbous bluegrass	E
Poaceae	<i>Poa pratensis</i> L.	Kentucky bluegrass	E

Poaceae	<i>Poa secunda</i> J. Presl	Sandberg bluegrass	N
Poaceae	<i>Poa stenantha</i> Trin.	Trinius' bluegrass	N
Poaceae	<i>Poa wheeleri</i> Vasey	Wheeler's bluegrass	N
Poaceae	<i>Pseudoroegneria spicata</i> (Pursh) A.L."ve	Bluebunch wheatgrass	N
Poaceae	<i>Secale cereale</i> L.	Cereal rye	E
Poaceae	<i>Thinopyrum intermedium</i> (Host) Barkworth & D.R. Dewey	Intermediate wheatgrass	E
Polemoniaceae	<i>Collinsia parviflora</i> Lindl.	Small flowered blue eyed mary	N
Polemoniaceae	<i>Collomia linearis</i> Nutt.	Linear-leaf collomia	N
Polemoniaceae	<i>Ipomopsis aggregata</i> (Pursh) V. Grant	Scarlet gilia	N
Polemoniaceae	<i>Linanthus septentrionalis</i> Mason	Northern linanthus	N
Polemoniaceae	<i>Phlox gracilis</i> (Hook.) Greene	Slender phlox	N
Polemoniaceae	<i>Phlox hoodii</i> Richards.	Hood's phlox	N
Polemoniaceae	<i>Phlox longifolia</i> Nutt.	Longleaf phlox	N
Polygonaceae	<i>Eriogonum heracleoides</i> Nutt.	Parsnipflower buckwheat	N
Polygonaceae	<i>Eriogonum microthecum</i> Nutt.	Slender buckwheat	N
Polygonaceae	<i>Eriogonum umbellatum</i> Torr.	Sulfer-flower buckwheat	N
Polygonaceae	<i>Polygonum aviculare</i> L.	Door knotweed	E
Polygonaceae	<i>Polygonum douglasii</i> Greene	Douglas' knotweed	N
Polygonaceae	<i>Rumex crispus</i> L.	Curly dock	E
Polypodiaceae	<i>Cystopteris fragilis</i> (L.) Bernh.	Brittle bladderfern	N
Portulacaceae	<i>Claytonia lanceolata</i> Pall. ex Pursh	Lanceleaf springbeauty	N
Portulacaceae	<i>Claytonia perfoliata</i> Donn ex Willd.	Miner's lettuce	N
Ranunculaceae	<i>Aquilegia caerulea</i> James var. <i>ochroleuca</i> Hook.	White Colorado columbine	N
Ranunculaceae	<i>Ceratocephala testiculata</i> (Crantz) Bess.	Bur buttercup	E
Ranunculaceae	<i>Delphinium glaucescens</i> Rydb.	Smooth larkspur	N
Ranunculaceae	<i>Delphinium nuttallianum</i> Pritz. ex Walp.	Upland larkspur	N
Ranunculaceae	<i>Ranunculus andersonii</i> Gray	Anderson's buttercup	N
Ranunculaceae	<i>Ranunculus cymbalaria</i> Pursh	Shoreline buttercup	N
Ranunculaceae	<i>Ranunculus glaberrimus</i> Hook.	Sagebrush buttercup	N
Ranunculaceae	<i>Ranunculus inamoerus</i> Greene	Unlovely buttercup	N
Ranunculaceae	<i>Ranunculus jovis</i> A. Nels.	Jove's buttercup	N

Rhamnaceae	<i>Ceanothus velutinus</i> Dougl. ex Hook.	Buckbrush	N
Rosaceae	<i>Amelanchier alnifolia</i> (Nutt.) Nutt. ex M. Roemer	Western serviceberry	N
Rosaceae	<i>Amelanchier utahensis</i> Koehne	Utah serviceberry	N
Rosaceae	<i>Cercocarpus ledifolius</i> Nutt.	Curl-leaf mountain mahogany	N
Rosaceae	<i>Fragaria vesca</i> L.	Woodland strawberry	N
Rosaceae	<i>Geum triflorum</i> Pursh	Old man's whiskers	N
Rosaceae	<i>Petrophytum caespitosum</i> (Nutt.) Rydb.	Rocky Mountain rockmat	N
Rosaceae	<i>Potentilla arguta</i> Pursh	Tall cinquefoil	N
Rosaceae	<i>Potentilla glandulosa</i> Lindl.	Sticky cinquefoil	N
Rosaceae	<i>Potentilla gracilis</i> Dougl. ex Hook.	Slender cinquefoil	N
Rosaceae	<i>Prunus virginiana</i> L.	Chokecherry	N
Rosaceae	<i>Purshia tridentata</i> (Pursh) DC.	Antelope bitterbrush	N
Rosaceae	<i>Rosa nutkana</i> K. Presl	Nootka rose	N
Rosaceae	<i>Rosa woodsii</i> Lindl.	Woods' rose	N
Rubiaceae	<i>Galium aparine</i> L.	Cleavers	N
Rubiaceae	<i>Galium boreale</i> L.	Northern bedstraw	N
Rubiaceae	<i>Galium triflorum</i> Michx.	Gragrant bedstraw	N
Salicaceae	<i>Populus tremuloides</i> Michx.	Quaking aspen	N
Salicaceae	<i>Salix scouleriana</i> Barratt ex Hook.	Scouler's willow	N
Santalaceae	<i>Comandra umbellata</i> (L.) Nutt.	Bastard toadflax	N
Saxifragaceae	<i>Lithophragma glabrum</i> Nutt.	Bulbous woodland-star	N
Saxifragaceae	<i>Lithophragma parviflorum</i> (Hook.) Nutt. ex Torr. & Gray	Smallflower woodland-star	N
Saxifragaceae	<i>Mitella stauropetala</i> Piper	Side-flowered miterwort	N
Scrophulariaceae	<i>Castilleja applegatei</i> ssp. <i>martini</i>	Desert paintbrush	N
Scrophulariaceae	<i>Castilleja linariaefolia</i> Benth.	Wyoming Indian paintbrush	N
Scrophulariaceae	<i>Cordylanthus ramosus</i> Nutt. ex Benth.	Bushy bird's beak	N
Scrophulariaceae	<i>Penstemon attenuatus</i> Dougl.	Sulfur penstemon	N
Scrophulariaceae	<i>Penstemon cyananthus</i> Hook.	Wasatch penstemon	N
Scrophulariaceae	<i>Penstemon humilis</i> Nutt. ex Gray	Lowly penstemon	N
Scrophulariaceae	<i>Rorippa nasturtium-aquaticum</i> (L.) Hayek	Watercress	E
Scrophulariaceae	<i>Scrophularia lanceolata</i> Pursh	Lanceleaf figwort	N
Scrophulariaceae	<i>Verbascum thapsus</i> L.	Common mullein	E

Scrophulariaceae	<i>Veronica americana</i> Schwein	American Brooklime	N
Scrophulariaceae	<i>Veronica anagallis-aquatica</i> L.	Water speedwell	E
Scrophulariaceae	<i>Veronica biloba</i> L.	Twolobe speedwell	E
Urticaceae	<i>Urtica dioica</i> L.	Stinging nettle	N
Valerianaceae	<i>Valeriana dioica</i> L.	Marsh valerian	N
Violaceae	<i>Viola adunca</i> Sm.	Early violot	N
Violaceae	<i>Viola nuttallii</i> Pursh	Nuttall's violet	N
Violaceae	<i>Viola purpurea</i> Kellogg	Goosefoot violet	N

Table 2: Species list of vascular plants known to occur within the Deep Creek Mountains of southeast Idaho. Listed in alphabetical order by genus. (N = Native; E = Exotic; C = Species of Conservation Concern)

Scientific Name	Common Name	Family	Status
<i>Abies lasiocarpa</i> (Hook.) Nutt.	Subalpine fir	Pinaceae	N
<i>Acer glabrum</i> Torr.	Rock Mountain maple	Aceraceae	N
<i>Achillea millefolium</i> L.	Common yarrow	Asteraceae	N
<i>Achnatherum nelsonii</i> (Scribn.) Barkworth ssp. <i>dorei</i> (Barkworth & Maze) Barkworth	Dore's needlegrass	Poaceae	N
<i>Agastache urticifolia</i> (Benth.) Kuntze	Nettle leaf horsemint	Lamiaceae	N
<i>Agoseris aurantiaca</i> (Hook.) Greene	Orange agoseris	Asteraceae	N
<i>Agoseris glauca</i> (Pursh) Raf. var. <i>laciniata</i> (D.C. Eat.) Smiley	False-agoseris	Asteraceae	N
<i>Agropyron cristatum</i> (L.) Gaertn.	Crested wheatgrass	Poaceae	E
<i>Agrostis scabra</i> Willd.	Rough bentgrass	Poaceae	N
<i>Allium acuminatum</i> Hook.	Tapertip onion	Liliaceae	N
<i>Amaranthus albus</i> L.	Prostrate pigweed	Amaranthaceae	E
<i>Amelanchier alnifolia</i> (Nutt.) Nutt. ex M. Roemer	Western serviceberry	Rosaceae	N
<i>Amelanchier utahensis</i> Koehne	Utah serviceberry	Rosaceae	N
<i>Amsinckia menziesii</i> (Lehm.) A. Nels. & J.F. Macbr.	Menzies' fiddleneck	Boraginaceae	N
<i>Antennaria dimorpha</i> (Nutt.) Torr. & Gray	Low pussytoes	Asteraceae	N
<i>Antennaria microphylla</i> Rydb.	Littleleaf pussytoes	Asteraceae	N
<i>Aquilegia caerulea</i> James var. <i>ochroleuca</i> Hook.	White Colorado columbine	Ranunculaceae	N
<i>Arabis glabra</i> (L.) Bernh.	Tower rockcress	Brassicaceae	N
<i>Arabis holboellii</i> Hornem.	Holboell's rockcress	Brassicaceae	N
<i>Arabis lignifera</i> A. Nels	Wooden-branched rockcress	Brassicaceae	N
<i>Arenaria capillaris</i> Poir.	Slender mountain sandwort	Caryophyllaceae	N
<i>Arenaria kingi</i> (Wats) M.E. Jones ssp. <i>uintahensis</i> (A. Nels.) Majuire	Utah sandwort	Caryophyllaceae	N
<i>Arnica cordifolia</i> Hook.	Heartleaf arnica	Asteraceae	N
<i>Artemisia arbuscula</i> Nutt.	Dwarf sagebrush	Asteraceae	N
<i>Artemisia dracuncululus</i> L.	Tarragon	Asteraceae	N
<i>Artemisia lindleyana</i> Bess.	Columbia River wormwood	Asteraceae	N

<i>Artemisia ludoviciana</i> Nutt.	Prairie sage	Asteraceae	N
<i>Artemisia nova</i> A. Nels.	Black sagebrush	Asteraceae	N
<i>Artemisia tridentata</i> Nutt. ssp. <i>tridentata</i>	Basin big sagebrush	Asteraceae	N
<i>Artemisia tridentata</i> Nutt. ssp. <i>vaseyana</i> (Rydb.) Boivin	Mountain big sagebrush	Asteraceae	N
<i>Asperugo procumbens</i> L.	Catchweed	Boraginaceae	E
<i>Astragalus agrestis</i> Dougl. ex G. Don	Purple milkvetch	Fabaceae	N
<i>Astragalus cibarius</i> Sheldon	Browse milkvetch	Fabaceae	N
<i>Astragalus convallarius</i> Greene	Lesser rushy milkvetch	Fabaceae	N
<i>Astragalus purshii</i> Dougl. ex Hook.	Wooly-pod milkvetch	Fabaceae	N
<i>Astragalus spatulatus</i> Sheldon	Tufted milkvetch	Fabaceae	N
<i>Balsamorhiza hookeri</i> Nutt.	Hooker's balsamroot	Asteraceae	N
<i>Balsamorhiza macrophylla</i> Nutt.	Big-leaf balsamroot	Asteraceae	N
<i>Balsamorhiza sagittata</i> (Pursh) Nutt.	Arrowleaf balsamroot	Asteraceae	N
<i>Bromus commutatus</i> Schrad.	Hairy brome	Poaceae	E
<i>Bromus inermis</i> Leyss.	Smooth brome	Poaceae	E
<i>Bromus tectorum</i> L.	Cheatgrass	Poaceae	E
<i>Calamagrostis purpurascens</i> R. Br.	Pinegrass	Poaceae	N
<i>Calamagrostis rubescens</i> Buckl.	Pinegrass	Poaceae	N
<i>Calochortus nuttallii</i> Torr. & Gray	Sego lily	Liliaceae	N
<i>Camelina microcarpa</i> DC.	Littlepod flase flax	Brassicaceae	E
<i>Capsella bursa-pastoris</i> (L.) Medik.	Sheperd's purse	Brassicaceae	E
<i>Cardaria draba</i> (L.) Desv.	Whitetop	Brassicaceae	E
<i>Carex geeyeri</i> Boott	Geyer's sedge	Cyperaceae	N
<i>Carex hoodii</i> Boott	Hood sedge	Cyperaceae	N
<i>Carex microptera</i> Mackenzie	Smallwing sedge	Cyperaceae	N
<i>Carex multcosta</i> Mackenzie	Manyrib sedge	Cyperaceae	N
<i>Carex pachystachya</i> Cham.	Thick-headed sedge	Cyperaceae	N
<i>Castilleja applegatei</i> ssp. <i>martini</i>	Desert paintbrush	Scrophulariaceae	N
<i>Castilleja linarifolia</i> Benth.	Wyoming Indian paintbrush	Scrophulariaceae	N
<i>Ceanothus velutinus</i> Dougl. ex Hook.	Buckbrush	Rhamnaceae	N
<i>Ceratocephala testiculata</i> (Crantz) Bess.	Bur buttercup	Ranunculaceae	E
<i>Cercocarpus ledifolius</i> Nutt.	Curl-leaf mountain mahogany	Rosaceae	N
<i>Chaenactis douglasii</i> (Hook.) Hook. & Arn.	Douglas' dustymaiden	Asteraceae	N
<i>Chamerion angustifolium</i> (L.) Holub	Fireweed	Onagraceae	N

<i>Chorispora tenella</i> (Pallas) DC.	Blue mustard	Brassicaceae	E
<i>Chrysothamnus viscidiflorus</i> (Hook.) Nutt.	Green rabbitbrush	Asteraceae	N
<i>Cirsium arvense</i> (L.) Scop.	Canada thistle	Asteraceae	E
<i>Cirsium utahense</i> Petr.	Utah thistle	Asteraceae	N
<i>Cirsium vulgare</i> (Savi) Ten..	Bull thistle	Asteraceae	E
<i>Clarkia rhomboidea</i> Dougl. ex Hook	Diamond clarkia	Onagraceae	N
<i>Claytonia lanceolata</i> Pall. ex Pursh	Lanceleaf springbeauty	Portulacaceae	N
<i>Claytonia perfoliata</i> Donn ex Willd.	Miner's lettuce	Portulacaceae	N
<i>Collinsia parviflora</i> Lindl.	Small flowered blue eyed mary	Polemoniaceae	N
<i>Collomia linearis</i> Nutt.	Linear-leaf collomia	Polemoniaceae	N
<i>Comandra umbellata</i> (L.) Nutt.	Bastard toadflax	Santalaceae	N
<i>Conringia orientalis</i> (L.) Dumort.	Hare's-ear mustard	Brassicaceae	E
<i>Convolvulus arvensis</i> L.	Field bindweed	Convolvulaceae	E
<i>Cordylanthus ramosus</i> Nutt. ex Benth.	Bushy bird's beak	Scrophulariaceae	N
<i>Crepis acuminata</i> Nutt.	Tapertip hawksbeard	Asteraceae	N
<i>Crepis occidentalis</i> Nutt.	Western hawksbeard	Asteraceae	N
<i>Cryptantha humilis</i> (Gray) Payson	Roundspike cryptantha	Boraginaceae	N
<i>Cryptantha scoparia</i> A. Nels.	Desert cryptantha	Boraginaceae	N
<i>Cryptantha spiculifera</i> (Piper) Payson	Snake River cryptantha	Boraginaceae	N
<i>Cryptantha torreyana</i> (Gray) Greene	Torrey's cryptantha	Boraginaceae	N
<i>Cynoglossum officinale</i> L.	Hound's-tongue	Boraginaceae	E
<i>Cystopteris fragilis</i> (L.) Bernh.	Brittle bladderfern	Polypodiaceae	N
<i>Dactylis glomerata</i> L.	Orchardgrass	Poaceae	E
<i>Delphinium glaucescens</i> Rydb.	Smooth larkspur	Ranunculaceae	N
<i>Delphinium nuttallianum</i> Pritz. ex Walp.	Upland larkspur	Ranunculaceae	N
<i>Deschampsia elongata</i> (Hook.) Munro	Slender hairgrass	Poaceae	N
<i>Descurainia californica</i> (Gray) O.E. Schulz	Sierra tansymustard	Brassicaceae	N
<i>Descurainia incana</i> (Bernh. ex Fisch. & C.A. Mey.) Dorn	Mountain tansymustard	Brassicaceae	N
<i>Descurainia sophia</i> (L.) Webb ex Pranti	Flixweed	Brassicaceae	E
<i>Disporum trachycarpum</i> (S.Wats.) Benth. & Hook. f.	Roughfruit fairybells	Liliaceae	N
<i>Elymus elymoides</i> (Raf.) Swezey	Squirreltail	Poaceae	N
<i>Elymus glaucus</i> Buckl.	Blue wildrye	Poaceae	N
<i>Elymus repens</i> (L.) Gould	Quackgrass	Poaceae	E
<i>Epilobium brachycarpum</i> K. Presl	Tall annual willowherb	Onagraceae	N
<i>Epilobium lactiflorum</i> Hausskn.	Milkflower willowherb	Onagraceae	N

<i>Epilobium minutum</i> Lindl. ex Lehm.	Chaparral willowherb	Onagraceae	N
<i>Ericameria nauseosa</i> (Pallas ex Pursh) Nesom & Baird	Gray rabbitbrush	Asteraceae	N
<i>Erigeron compositus</i> Pursh	Cutleaf daisy	Asteraceae	N
<i>Erigeron pumilus</i> Nutt.	Shaggy fleabane	Asteraceae	N
<i>Erigeron speciosus</i> (Lindl.) DC.	Aspen fleabane	Asteraceae	N
<i>Eriogonum heracleoides</i> Nutt.	Parsnipflower buckwheat	Polygonaceae	N
<i>Eriogonum microthecum</i> Nutt.	Slender buckwheat	Polygonaceae	N
<i>Eriogonum umbellatum</i> Torr.	Sulfer-flower buckwheat	Polygonaceae	N
<i>Eriophyllum lanatum</i> (Pursh) Forbes	Oregon sunshine	Asteraceae	N
<i>Erodium cicutarium</i> (L.) L'H,r. ex Ait.	Stork's bill	Geraniaceae	E
<i>Erysimum capitatum</i> (Dougl. ex Hook) Greene	Rough wallflower	Brassicaceae	N
<i>Eucephalus elegans</i> Nutt.	Elegant aster	Asteraceae	N
<i>Eucephalus engelmannii</i> (D.C. Eat.) Greene	Engelmann's aster	Asteraceae	N
<i>Fragaria vesca</i> L.	Woodland strawberry	Rosaceae	N
<i>Fritillaria atropurpurea</i> Nutt.	Chocolate lily	Liliaceae	N
<i>Fritillaria pudica</i> (Pursh) Spreng.	Yellow bells	Liliaceae	N
<i>Galium aparine</i> L.	Cleavers	Rubiaceae	N
<i>Galium boreale</i> L.	Northern bedstraw	Rubiaceae	N
<i>Galium triflorum</i> Michx.	Gragrant bedstraw	Rubiaceae	N
<i>Geranium viscosissimum</i> Fisch. & C.A. Mey. ex C.A. Mey.	Sticky purple geranium	Geraniaceae	N
<i>Geum triflorum</i> Pursh	Old man's whiskers	Rosaceae	N
<i>Glyceria grandis</i> S. Wats.	American mannagrass	Poaceae	N
<i>Grindelia squarrosa</i> (Pursh) Dunal	Curlycup gumweed	Asteraceae	N
<i>Gutierrezia sarothrae</i> (Pursh) Britt. & Rusby	Broom snakeweed	Asteraceae	N
<i>Hackelia deflexa</i> (Wahlenb.) Opiz var. <i>americana</i> (Gray) A. & D. L'Ve	American stickseed	Boraginaceae	N
<i>Hackelia floribunda</i> (Lehm.) I.M. Johnston	Manyflowered stickseed	Boraginaceae	N
<i>Hackelia patens</i> (Nutt.) I.M. Johnston var. <i>patens</i>	Spreading stickseed	Boraginaceae	N
<i>Helianthella uniflora</i>	Rocky Mountain helianthella	Asteraceae	N
<i>Heliomeris multiflora</i> Nutt.	Showy goldeneye	Asteraceae	N
<i>Hesperostipa comata</i> (Trin. & Rupr.) Barkworth	Needle-and-thread	Poaceae	N
<i>Hieracium albiflorum</i> Hook.	White hawkweed	Asteraceae	N
<i>Hordeum jubatum</i> L.	Foxtail barley	Poaceae	N
<i>Hydrophyllum capitatum</i> Dougl. Ex Benth.	Ballhead waterleaf	Hydrophyllaceae	N
<i>Hydrophyllum occidentale</i> (S. Wats.) Gray	Western waterleaf	Hydrophyllaceae	N
<i>Hymenoxys cooperi</i> (Gray) Cockerell var. <i>canescens</i> (D.C. Eat.) Parker	Cooper's rubberweed	Asteraceae	N, C

<i>Iliamna rivularis</i> (Dougl. ex Hook.) Greene	Mountain hollyhock	Malvaceae	N
<i>Ipomopsis aggregata</i> (Pursh) V. Grant	Scarlet gilia	Polemoniaceae	N
<i>Juniperus communis</i> L.	Common juniper	Cupressaceae	N
<i>Juniperus osteosperma</i> (Torr.) Little	Utah juniper	Cupressaceae	N
<i>Juniperus scopulorum</i> Sarg.	Rocky Mountain juniper	Cupressaceae	N
<i>Koeleria macrantha</i> (Ledeb.) J.A. Schultes	Prairie junegrass	Poaceae	N
<i>Lactuca serriola</i> L.	Prickly lettuce	Asteraceae	E
<i>Lappula occidentalis</i> (S.Wats.) Greene	Western stickseed	Boraginaceae	N
<i>Lappula squarrosa</i> (Retz.) Dumort.	European stickseed	Boraginaceae	E
<i>Lepidium virginicum</i> L. var. <i>pubescens</i> (Greene) Thellung	Hairy pepperweed	Brassicaceae	E
<i>Lesquerella occidentalis</i> S. Wats	Western bladderpod	Brassicaceae	N
<i>Leucopoa kingii</i> (S. Wats.) W.A. Weber	Spike fescue	Poaceae	N
<i>Leymus cinereus</i> (Scribn. & Merr.) A. L"ve	Basin wildrye	Poaceae	N
<i>Linanthus septentrionalis</i> Mason	Northern linanthus	Polemoniaceae	N
<i>Linum lewisii</i> Pursh	Blue flax	Linaceae	N
<i>Lithophragma glabrum</i> Nutt.	Bulbous woodland-star	Saxifragaceae	N
<i>Lithophragma parviflorum</i> (Hook.) Nutt. ex Torr. & Gray	Smallflower woodland-star	Saxifragaceae	N
<i>Lithospermum ruderales</i> Dougl. ex Lehm.	Stoneseed	Boraginaceae	N
<i>Lomatium dissectum</i> (Nutt.) Mathias & Constance	Fernleaf biscuitroot	Apiaceae	N
<i>Lomatium foeniculaceum</i> (Nutt.) Coult. & Rose	Desert biscuitroot	Apiaceae	N
<i>Lomatium triternatum</i> (Pursh) Coult. & Rose	Nineleaf biscuitroot	Apiaceae	N
<i>Lupinus argenteus</i> Pursh	Silvery lupine	Fabaceae	N
<i>Lupinus caudatus</i> Kell.	Tailcup lupine	Fabaceae	N
<i>Lupinus parviflorus</i> Nutt. ex Hook. & Arn.	Lodgepole lupine	Fabaceae	N
<i>Lupinus sericeus</i> Pursh	Silky lupine	Fabaceae	N
<i>Machaeranthera canescens</i> (Pursh) Gray	Hoary aster	Asteraceae	N
<i>Mahonia repens</i> (Lindl.) G. Don	Creeping oregon grape	Berberidaceae	N
<i>Maianthemum stellatum</i> (L.) Link	Starry solomon-plume	Liliaceae	N
<i>Matricaria discoidea</i> DC.	Pineapple weed	Asteraceae	N
<i>Medicago lupulina</i> L.	Black medic	Fabaceae	E
<i>Medicago sativa</i> L.	Alfalfa	Fabaceae	E
<i>Melica bulbosa</i> Geyer ex Porter & Coult.	Oniongrass	Poaceae	N
<i>Melilotus alba</i> Desr.	White Sweet-clover	Fabaceae	E
<i>Melilotus officinalis</i> (L.) Lam.	Yellow sweetclover	Fabaceae	N
<i>Mentzelia albicaulis</i> (Dougl. ex Hook.) Dougl. ex Torr. & Gray	Whitestem blazingstar	Loasaceae	N

<i>Mertensia oblongifolia</i> (Nutt.) G. Don	Leafy bluebells	Boraginaceae	N
<i>Mitella stauropetala</i> Piper	Side-flowered miterwort	Saxifragaceae	N
<i>Nemophila breviflora</i>	Great Basin nemophila	Hydrophyllaceae	N
<i>Nothocalais troximoides</i> (Gray) Greene	False-agoseris	Asteraceae	N
<i>Oenothera caespitosa</i> Nutt.	Tufted evening-primrose	Onagraceae	N
<i>Opuntia polyacantha</i> Haw.	Starvation cholla	Cactaceae	N
<i>Orthilia secunda</i> (L.) House	One-sided wintergreen	Ericaceae	N
<i>Osmorhiza berteroi</i> DC.	Sweetcicely	Apiaceae	N
<i>Osmorhiza occidentalis</i> (Nutt. ex Torr. & Gray) Torr.	Western sweetroot	Apiaceae	N
<i>Packera cana</i> (Hook.) W.A. Weber & A. L"ve	Wooly groundsel	Asteraceae	N
<i>Packera debilis</i> (Nutt.) W.A. Weber & A. L"ve	Weak groundsel	Asteraceae	N
<i>Packera indecora</i> (Greene) A.&D. L"ve	Rayless mountain butterweed	Asteraceae	N
<i>Packera multilobata</i> (Torr. & Gray ex Gray) W.A. Weber & A.L"ve	Lobeleaf groundsel	Asteraceae	N
<i>Packera paupercula</i> (Michx.) A.&D. L"ve	Balsam groundsel	Asteraceae	N
<i>Packera streptanthifolia</i> (Greene) W.A. Weber & A. L"ve	Rocky Mountain groundsel	Asteraceae	N
<i>Pascopyrum smithii</i> (Rydb.) A. L"ve	Western wheatgrass	Poaceae	N
<i>Pediocactus simpsonii</i> (Engelm.) Britt. & Rose	Simpson's hedgehog cactus	Cactaceae	N
<i>Penstemon attenuatus</i> Dougl.	Sulfur penstemon	Scrophulariaceae	N
<i>Penstemon cyananthus</i> Hook.	Wasatch penstemon	Scrophulariaceae	N
<i>Penstemon humilis</i> Nutt. ex Gray	Lowly penstemon	Scrophulariaceae	N
<i>Petrophytum caespitosum</i> (Nutt.) Rydb.	Rocky Mountain rockmat	Rosaceae	N
<i>Phacelia hastata</i> Dougl. ex. Lehm.	Silverleaf phacelia	Hydrophyllaceae	N
<i>Phleum pratensis</i> L.	Timothy	Poaceae	E
<i>Phlox gracilis</i> (Hook.) Greene	Slender phlox	Polemoniaceae	N
<i>Phlox hoodii</i> Richards.	Hood's phlox	Polemoniaceae	N
<i>Phlox longifolia</i> Nutt.	Longleaf phlox	Polemoniaceae	N
<i>Pinus contorta</i> Dougl. ex Loud.	Lodgepole pine	Pinaceae	N
<i>Piperia unalascensis</i> (Spreng.) Rydb.	Slender-spire orchid	Orchidaceae	N
<i>Plagiobothrys scouleri</i> (Hook. & Arn.) I.M. Johnston	Scouler's popcornflower	Boraginaceae	N
<i>Plantago major</i> L.	Common plantain	Plantaginaceae	E
<i>Poa arnowiae</i> Soreng, ined.	Wasatch bluegrass	Poaceae	N
<i>Poa bulbosa</i> L.	Bulbous bluegrass	Poaceae	E
<i>Poa pratensis</i> L.	Kentucky bluegrass	Poaceae	E

<i>Poa secunda</i> J. Presl	Sandberg bluegrass	Poaceae	N
<i>Poa stenantha</i> Trin.	Trinius' bluegrass	Poaceae	N
<i>Poa wheeleri</i> Vasey	Wheeler's bluegrass	Poaceae	N
<i>Polygonum aviculare</i> L.	Door knotweed	Polygonaceae	E
<i>Polygonum douglasii</i> Greene	Douglas' knotweed	Polygonaceae	N
<i>Populus tremuloides</i> Michx.	Quaking aspen	Salicaceae	N
<i>Potentilla arguta</i> Pursh	Tall cinquefoil	Rosaceae	N
<i>Potentilla glandulosa</i> Lindl.	Sticky cinquefoil	Rosaceae	N
<i>Potentilla gracilis</i> Dougl. ex Hook.	Slender cinquefoil	Rosaceae	N
<i>Prunus virginiana</i> L.	Chokecherry	Rosaceae	N
<i>Pseudoroegneria spicata</i> (Pursh) A.L."ve	Bluebunch wheatgrass	Poaceae	N
<i>Pseudostellaria jamesiana</i> (Torr.) W.A. Weber & R.L. Hartman	Tuber starwort	Caryophyllaceae	N
<i>Pseudotsuga menziesii</i> (Raf.) Sudw.	Douglas-fir	Pinaceae	N
<i>Pterospora andromedea</i> Nutt.	Woodland pinedrops	Ericaceae	N
<i>Pteryxia terebinthina</i> (Hook.) Coult. & Rose var. <i>foeniculacea</i> (Nutt. ex Torr. & Gray) Mathias	Turpentine wavewing	Apiaceae	N
<i>Purshia tridentata</i> (Pursh) DC.	Antelope bitterbrush	Rosaceae	N
<i>Ranunculus andersonii</i> Gray	Anderson's buttercup	Ranunculaceae	N
<i>Ranunculus cymbalaria</i> Pursh	Shoreline buttercup	Ranunculaceae	N
<i>Ranunculus glaberrimus</i> Hook.	Sagebrush buttercup	Ranunculaceae	N
<i>Ranunculus inamoerus</i> Greene	Unlovely buttercup	Ranunculaceae	N
<i>Ranunculus jovis</i> A. Nels.	Jove's buttercup	Ranunculaceae	N
<i>Ribes cereum</i> Dougl.	Wax currant	Grossulariaceae	N
<i>Ribes montigenum</i> McClatchie	Gooseberry currant	Grossulariaceae	N
<i>Ribes viscosissimum</i> Pursh	Sticky currant	Grossulariaceae	N
<i>Rorippa nasturtium-aquaticum</i> (L.) Hayek	Watercress	Scrophulariaceae	E
<i>Rosa nutkana</i> K. Presl	Nootka rose	Rosaceae	N
<i>Rosa woodsii</i> Lindl.	Woods' rose	Rosaceae	N
<i>Rudbeckia occidentalis</i> Nutt.	Western coneflower	Asteraceae	N
<i>Rumex crispus</i> L.	Curly dock	Polygonaceae	E
<i>Salix scouleriana</i> Barratt ex Hook.	Scouler's willow	Salicaceae	N
<i>Salsola tragus</i> L.	Russian thistle	Chenopodiaceae	E
<i>Sambucus nigra</i> L. ssp. <i>cerulea</i> (Raf.) R. Bolli	Blue elderberry	Caprifoliaceae	N
<i>Scrophularia lanceolata</i> Pursh	Lanceleaf figwort	Scrophulariaceae	N
<i>Secale cereale</i> L.	Cereal rye	Poaceae	E
<i>Sedum lanceolatum</i> Torr.	Lanceleaf stonecrop	Crassulaceae	N

Senecio serra Hook.	Tall ragwort	Asteraceae	N
Silene menziesii Hook.	Menzies' silene	Caryophyllaceae	N
Sisymbrium altissimum L.	Tumblemustard	Asteraceae	E
Solidago canadensis L.	Canada goldenrod	Asteraceae	N
Spergularia rubra (L.) J.&K. Presl	Red sandspurry	Caryophyllaceae	E
Stenotus acaulis (Nutt.) Nutt.	Stemless goldenweed	Asteraceae	N
Symphoricarpos oreophilus	Mountain snowberry	Caprifoliaceae	N
Symphotrichum spathulatum (Lindl.) Nesom	Western mountain aster	Asteraceae	N
Taraxacum officinale G.H. Weber ex Wiggers	Common dandelion	Asteraceae	E
Tetradymia canescens DC.	Gray horsebrush	Asteraceae	N
Thinopyrum intermedium (Host) Barkworth & D.R. Dewey	Intermediate wheatgrass	Poaceae	E
Thlaspi montanum L.	Field pennycress	Brassicaceae	E
Tragopogon dubius Scop.	Yellow salsify	Asteraceae	E
Trifolium pratense L.	Red clover	Fabaceae	E
Trifolium repens L.	White clover	Fabaceae	E
Urtica dioica L.	Stinging nettle	Urticaceae	N
Valeriana dioica L.	Marsh valerian	Valerianaceae	N
Verbascum thapsus L.	Common mullein	Scrophulariaceae	E
Veronica americana Schwein	American Brooklime	Scrophulariaceae	N
Veronica anagallis-aquatica L.	Water speedwell	Scrophulariaceae	E
Veronica biloba L.	Twolobe speedwell	Scrophulariaceae	E
Viola adunca Sm.	Early violet	Violaceae	N
Viola nuttallii Pursh	Nuttall's violet	Violaceae	N
Viola purpurea Kellogg	Goosefoot violet	Violaceae	N
Wyethia amplexicaulis (Nutt.) Nutt.	Mule's ears	Asteraceae	N
Zigadenus paniculatus (Nutt.) S. Wats.	Foothill deathcamas	Liliaceae	N