



DRAFT COMMUNITY INVOLVEMENT PLAN

Terminal 4 Sediment Cleanup

Portland Harbor Superfund Site - Portland, Oregon

Introduction

The Environmental Protection Agency (EPA) is developing this plan to encourage community involvement during the cleanup of contaminated sediments at the Port of Portland's marine Terminal 4. This plan identifies opportunities for involvement, community concerns and information needs.

EPA is developing this plan in collaboration with the Oregon Department of Environmental Quality (DEQ), the Port of Portland, other stakeholders and the Portland Harbor Community Advisory Group. Interviews and discussions with individuals and groups from the community are an important ongoing part of this planning effort. If you have questions about the project, this plan, or would like additional information, please call, Judy Smith, EPA Community Involvement Coordinator, (503) 326-6994, or e-mail her at smith.judy@epa.gov.

EPA Invites You to Get Involved

This section describes opportunities to find out more about the cleanup and participate in activities at the site. EPA is using a variety of activities to encourage community involvement in the Terminal 4 Sediment Cleanup.

Since the Terminal 4 Sediment Cleanup is an early action within the larger Portland Harbor Superfund Site, harbor-wide community involvement activities will also inform project managers about public concerns and values. EPA is also working cooperatively with the Port of Portland on joint public outreach activities such as site tours and presentations.

Visit the EPA Terminal 4 Web Site

EPA has developed a web site for the Terminal 4 Early Action Sediment Cleanup. To access the site, go to:
<http://yosemite.epa.gov/R10/CLEANUP.NSF/sites/T4>. The web site contains fact sheets, legal and technical documents, press releases and links to other related web sites, including the Port of Portland's Terminal 4 Early Action Sediment Cleanup Project web site.

Add Your Name to Our Mailing Lists

EPA will use the established Portland Harbor Superfund Site mailing list to distribute fact sheets, meeting notices and other information about the Terminal 4 Sediment Cleanup. Please contact Judy Smith at smith.judy@epa.gov or (503) 326-6994 if you would like to be added or removed from the mailing list.

Read Terminal 4 Facts Sheets

EPA will prepare fact sheets for the Terminal 4 Sediment Cleanup to inform you about progress on site activities, public meetings and comment opportunities. The fact sheets will be sent out by regular mail to the project mailing list, sent by e-mail to those who request it, and will be available on EPA and Port web sites.

Attend Meetings and Open Houses about the Project

EPA's public involvement coordinator and project manager are available to meet with community members to provide information. EPA expects to conduct public meetings for project activities that may be of particular interest to the community, including the Engineering Evaluation/Cost Analysis (EE/CA).

The Port of Portland will also be hosting a variety of activities to share information including site tours and meetings. The Port of Portland hosted an initial site tour on December 20, 2003. Sixteen people participated in a discussion about the project and tour of Terminal 4.

Express Your Ideas During Public Comment Periods

Comment periods are a formal opportunity to make sure your comments become part of the official record for the site. Comment periods usually last thirty days and are required before certain final cleanup decisions are made. Written comments are encouraged and if there is sufficient interest, a public hearing may be held to hear spoken comments. EPA considers the comments before making its decision.

A formal public comment period will be opened when the draft Engineering Evaluation/Cost Analysis is available. EPA will notify community members of the public comment opportunity through the project mailing and e-mail lists, posting on the project web site, and notices in local newspapers.

Read Project Documents at an Information Repository

Information repositories are places where the public may review and read selected project information, including documents that are the subject of public comment. Information repositories are located at:

- Multnomah County Central Library, 801 S.W. 10th Avenue. Phone: 503-988-5123.
- St. John's Library, 7510 N. Charleston Avenue. Phone: 503-988-5397.
- Northwest Branch Library, 2309 NW Thurman Street. Phone: 503-988-5660.

Provide Regular Updates to Portland Harbor Community Advisory Group

Because Terminal 4 is within the Portland Harbor Superfund Site, EPA and the Port will provide regular project updates for the Portland Harbor Community Advisory Group (CAG). The Portland Harbor CAG meets the second Wednesday evening of each month from 6:00 to 8:00 p.m. at the State Office Building, 800 N.E. Oregon Street in Portland.

To learn more about the Portland Harbor CAG, visit the group's web site:
www.portlandharborcag.org

Contact Project Personnel

If you have questions about the Terminal 4 Early Action Sediment Cleanup contact:

Judy Smith, 503-326-6994

EPA Community Involvement Coordinator
smith.judy@epa.gov

Sean Sheldrake, 206-553-1220

EPA Project Manager
sheldrake.sean@epa.gov

Susan Safford, 503-944-7047

Port of Portland
Environmental Outreach Manager
saffos@portptld.com

Anne Summers, 503-944-7508

Port of Portland
Project Manager
summea@portptld.com

Fenix Grange, 503-229-6590

Oregon Dept. of Environmental Quality
Portland Harbor Project Coordinator
grange.fenix@deq.state.or.us

The Local Community

The Terminal 4 Sediment Cleanup may be of interest to nearby residents, employees of industries located at Terminal 4, anglers, boaters and other recreational users of the Willamette River, and many others in the Portland, Oregon metropolitan area.

Terminal 4 is located within the St. Johns Neighborhood of Portland, Oregon. According to information gathered during Census 2000, St Johns has 11,346 residents living in 4,148 households. The population of St. Johns is approximately 62percent white, 9 percent black, 14 percent Hispanic, 5 percent Asian, 2 percent Native American and 7 percent other.

Approximately 29 percent of the population is under 18 years old.

The Linnton Neighborhood is directly across the Willamette River from Terminal 4.

Results of Community Interviews

This part of the Community Involvement Plan will not be completed until EPA and the Port of Portland complete interviews with individuals and groups during January 2004 to learn about community needs and concerns, and find out how people would like to be involved.

In addition to community interviews, EPA and the Port of Portland will be talking with people at open houses, tours and briefings about the Terminal 4 Sediment Cleanup to identify additional issues, concerns and values.

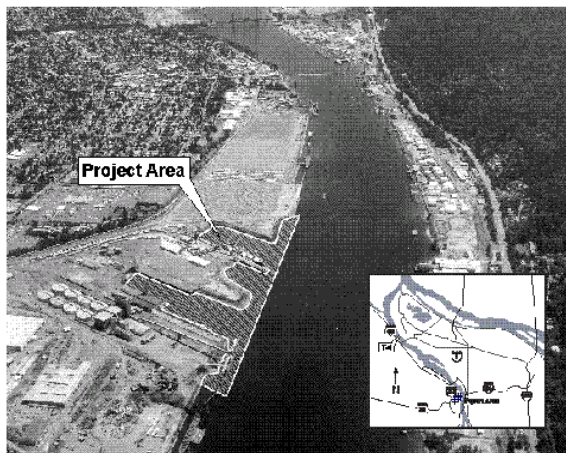
A summary of what we heard from community members will be here in the final plan.

If you would like to participate in a community interview or talk with EPA and the Port of Portland during January or February about the project, please e-mail Judy Smith at smith.judy@epa.gov or call 503-326-6994.

Terminal 4 Site History

The Port of Portland's marine Terminal 4 is located at 11040 North Lombard Street in Portland, Oregon, on the east side of the Willamette River just north of the St. Johns Bridge. It is the Port of Portland's oldest operating marine terminal. Historically, the terminal was used for loading and unloading petroleum products, pencil pitch, liquid fertilizer, soda ash, metals and agricultural products.

Today, marine Terminal 4 is a multi-purpose facility that provides ship berths capable of handling grain, autos, forest products, steel, and dry and liquid bulks.



In October 2003, the EPA and Port of Portland signed a legal agreement called an Administrative Order on Consent (AOC) to assess and clean up contaminated river sediment at marine Terminal 4. The area being cleaned up extends west from the ordinary high water line of the northeast bank of the lower Willamette River to the edge of the navigation channel, and extending south from the downstream end of Berth 414 to the downstream edge of Berth 401, including Slip 1, Slip 3 and Wheeler Bay. This area is located within

the Portland Harbor Superfund Site, which was added to the National Priorities List in December 2000.

Some investigation work has already been completed and shows the presence of various contaminants in the sediments, such as petroleum products, metals, pesticides and polychlorinated biphenyls (PCBs) at levels that pose a threat to human health and the environment. The Port of Portland will investigate the nature and extent of the sediment contamination and recommend viable cleanup methods to EPA. EPA oversees the Port of Portland's investigation work and will make the final decision about what cleanup method to use.

The Port of Portland and EPA are coordinating the Terminal 4 Early Action Sediment Cleanup Project with upland cleanup work taking place concurrently under the oversight of the Oregon Department of Environmental Quality (DEQ). The project is also being undertaken in partnership with Tribal governments and natural resources agencies already involved in the Portland Harbor cleanup. It is being closely coordinated for consistency with ongoing activities to clean up the Portland Harbor. The Terminal 4 Sediment Cleanup is called an "early action," because it will be finished before the Portland Harbor cleanup.

Terminal 4 Cleanup Timeline

- Investigation..... Spring-Fall 2004
- Develop and Analyze Cleanup Alternatives...Fall 2004 – 2005
- Select Cleanup Method... Early 2006
- Design Selected Cleanup Method..... thru 2006
- Cleanup Actionsstart 2007

APPENDIX A: Summary of Community Interviews for Terminal 4 Early Action Sediment Cleanup Project

Community interviews were held with individuals and small groups on December 20, 2003 and [insert dates 2004]. The purpose of these discussions was for EPA to learn community concerns related to the Terminal 4 Sediment Cleanup, find out how the community wants to receive information about the project and learn how the community would like to be involved.

Judy Smith, EPA Community Involvement Coordinator conducted the following community interviews and meetings:

[Insert name, date etc.]

Participants were asked the following questions to stimulate discussion (as needed):

- When did you first become aware Terminal 4 Sediment Cleanup project?
- What is your understanding of the site history?
- What are your current concerns about the project?
- Have you participated in activities concerning the project?
- How would you like to be involved in future activities?
- How can EPA best provide you with information about the project?
- What kinds of information do you need?
- How do you want to receive information about the project and how frequently?
- How does the public perceive the presence of Federal or state officials in the area?
- Are there other environmental issues in the area that we should be aware of?
- Is there anything we haven't discussed that would be helpful to know about the project?
- Can you suggest other individuals or groups who we should contact for additional information?

APPENDIX B: Superfund Removal and Remedial Action Programs

EPA and the Port of Portland are responding to sediment contamination at marine Terminal 4 with a **removal action** authorized by the Comprehensive Environmental Response, Compensation and Liability Act (CERCLA or “Superfund”). **Removal actions** are short-term responses to prevent, minimize or mitigate damage to the public or the environment at sites where hazardous substances, pollutants, or contaminants have been released, or where there is substantial threat of a release. The Administrative Order on Consent (AOC) describes the need for the response and the proposed action at marine Terminal 4.

Superfund also authorizes **remedial actions** that involve the study, design and construction of long-term environmental cleanup actions. **Remedial actions** involve more detailed planning and decision-making processes than removal actions and may only be conducted at sites on the National Priorities List. The Portland Harbor Superfund Site Cleanup is a remedial action.

There are three types of removal actions: (1) emergency, (2) time-critical, and (3) non-time-critical. **Emergency removals** must be initiated within hours or days in response to acute problems. These emergency situations may involve fires or explosions, imminent contamination of a water supply, or the release or imminent release of hazardous substances. **Time-critical removals** respond to releases requiring onsite action within six months. Examples include removal of drums or small volumes of contaminated soil and stabilization of lagoons. **Non-time-critical (NTC) removals** respond to releases where a planning period of at least six months is available before project activities must begin and the need is less immediate. The categorization of a removal into one of these three types is based largely on the urgency of the situation.

The marine Terminal 4 Sediment Cleanup is a NTC removal action.