



**Department of Health and Human Services
National Institutes of Health
National Center for Research Resources
Division of Research Infrastructure (DRI)**

***“The Division of Research Infrastructure
Overview”***

**Sidney A. McNairy, Ph.D., D.Sc.
Director, DRI
July 18, 2003**



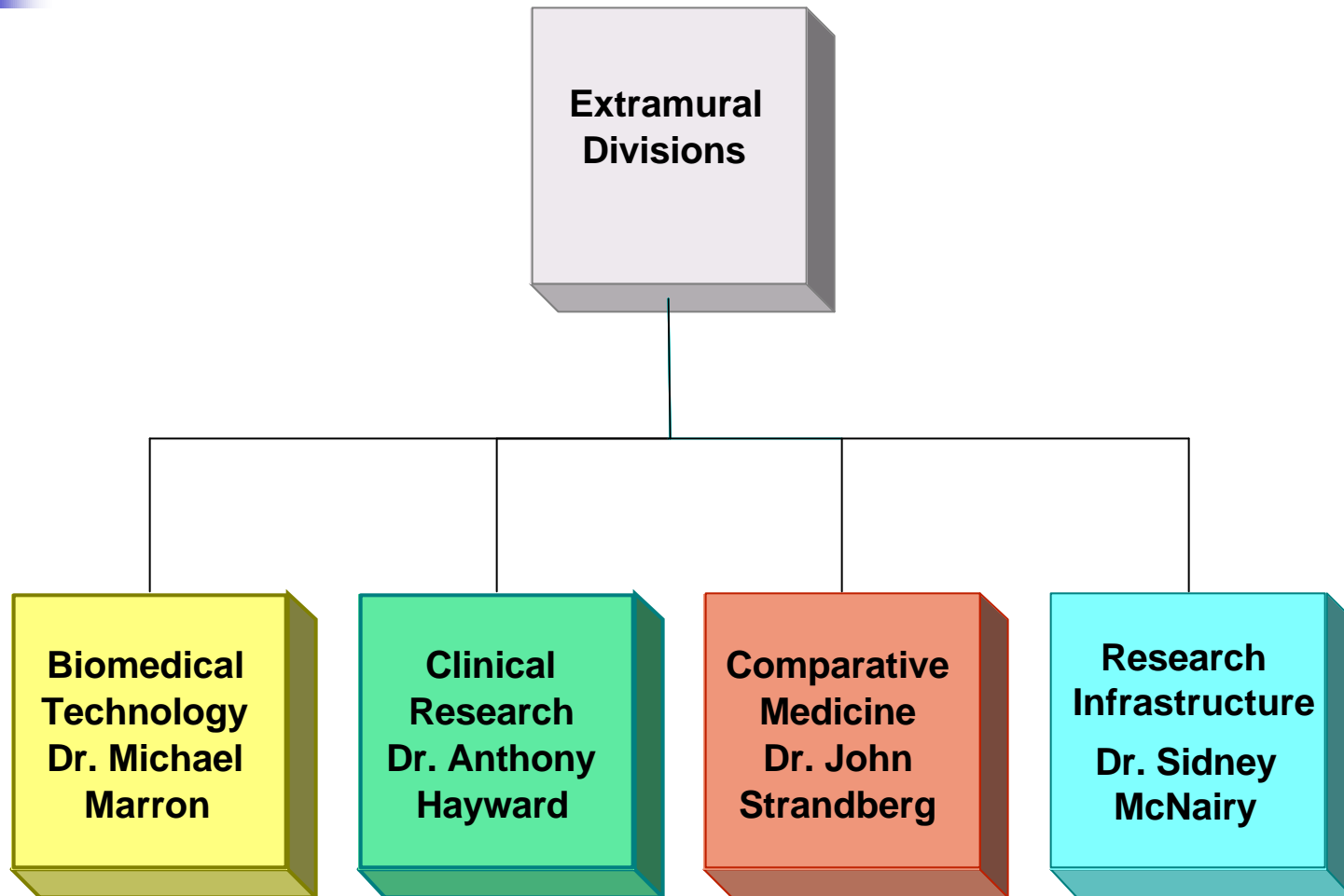
National Center for Research Resources

Mission:

"...to strengthen and enhance the research environments of entities engaged in health-related research by developing and supporting essential research resources."

{PHS Act, Title III, Part E, Section 479}

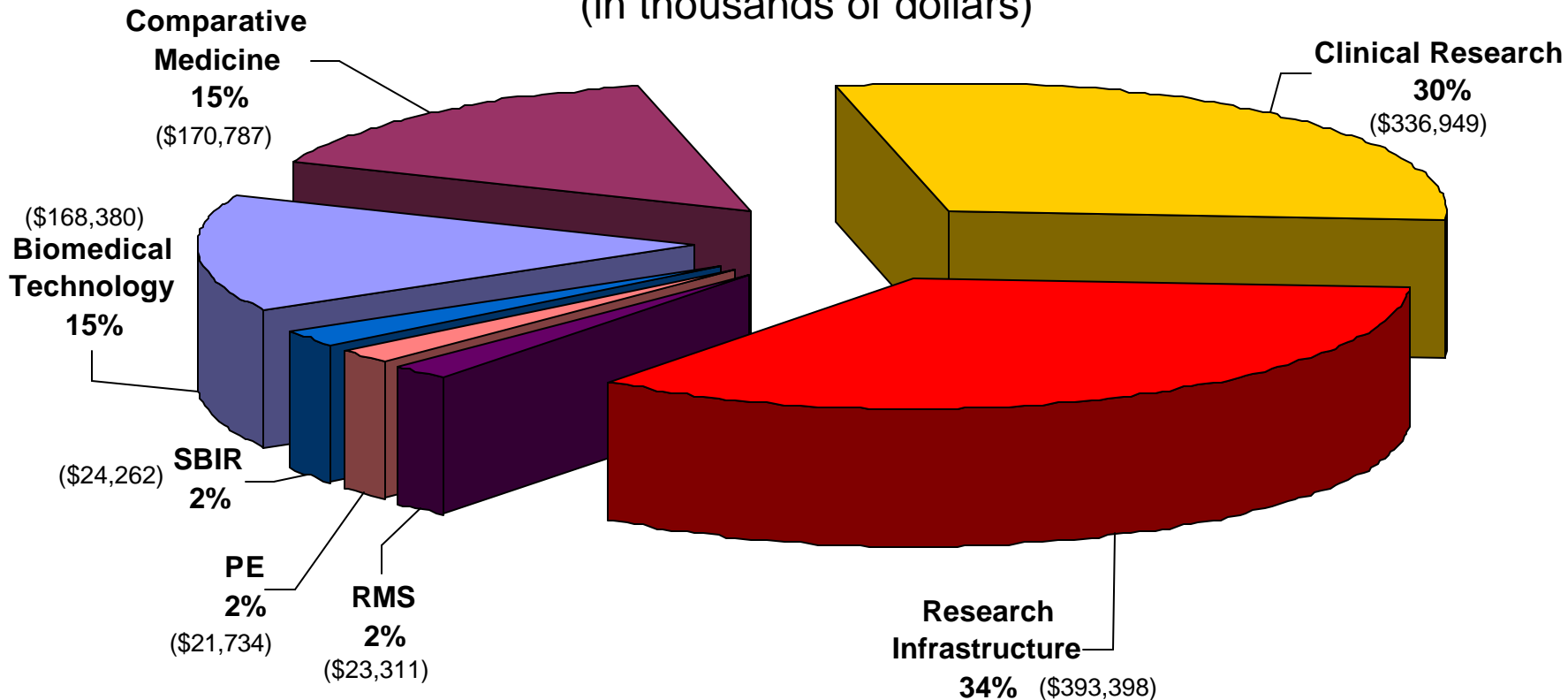
National Center for Research Resources



National Center for Research Resources

FY 2003 Appropriations

(in thousands of dollars)



NCRR Total: \$1,138,821,000

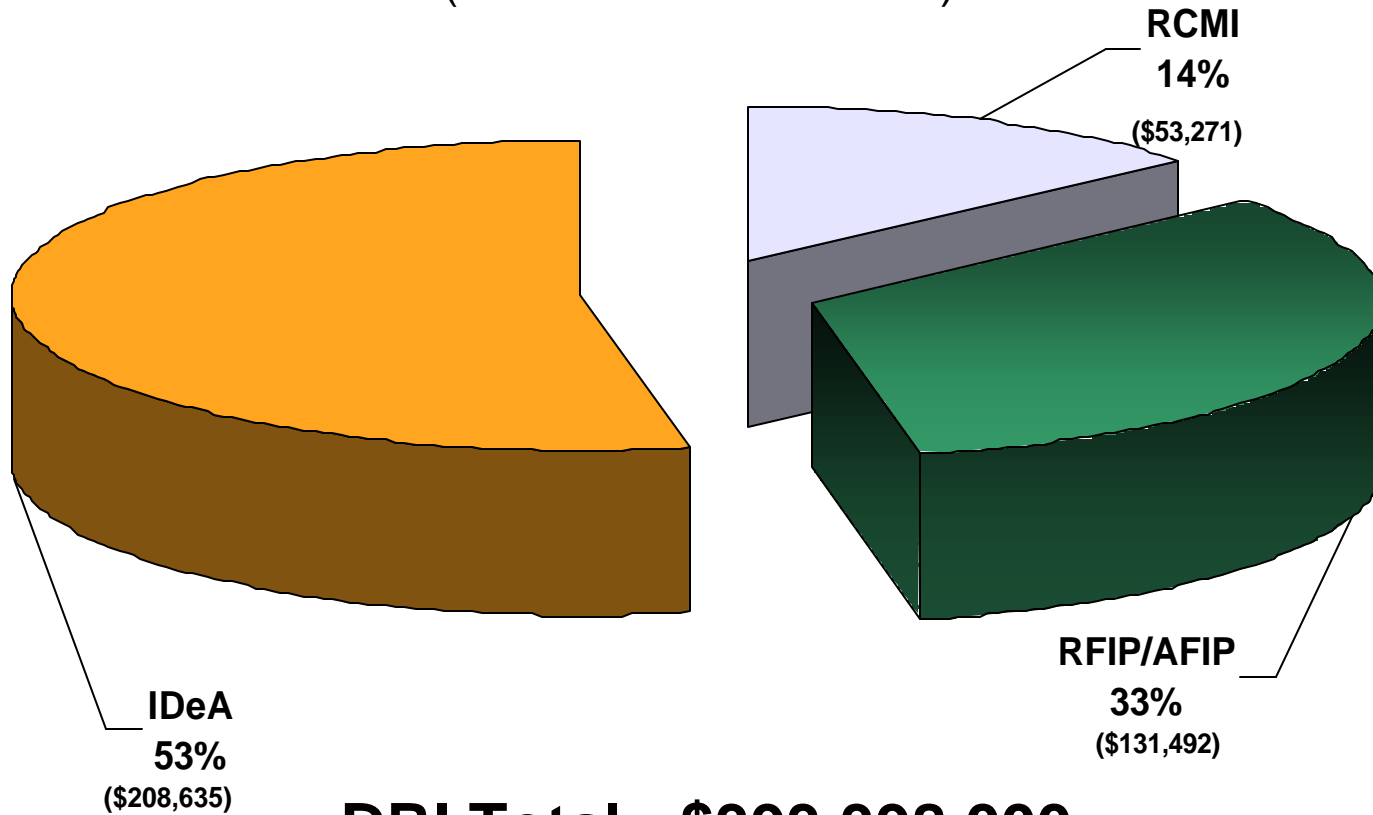


Division of Research Infrastructure

**GOAL: TO DEVELOP THE NATION'S
CAPACITY FOR BIOMEDICAL
RESEARCH BY PROVIDING SUPPORT
FOR THE DEVELOPMENT OF
RESEARCH INFRASTRUCTURE**

Division of Research Infrastructure

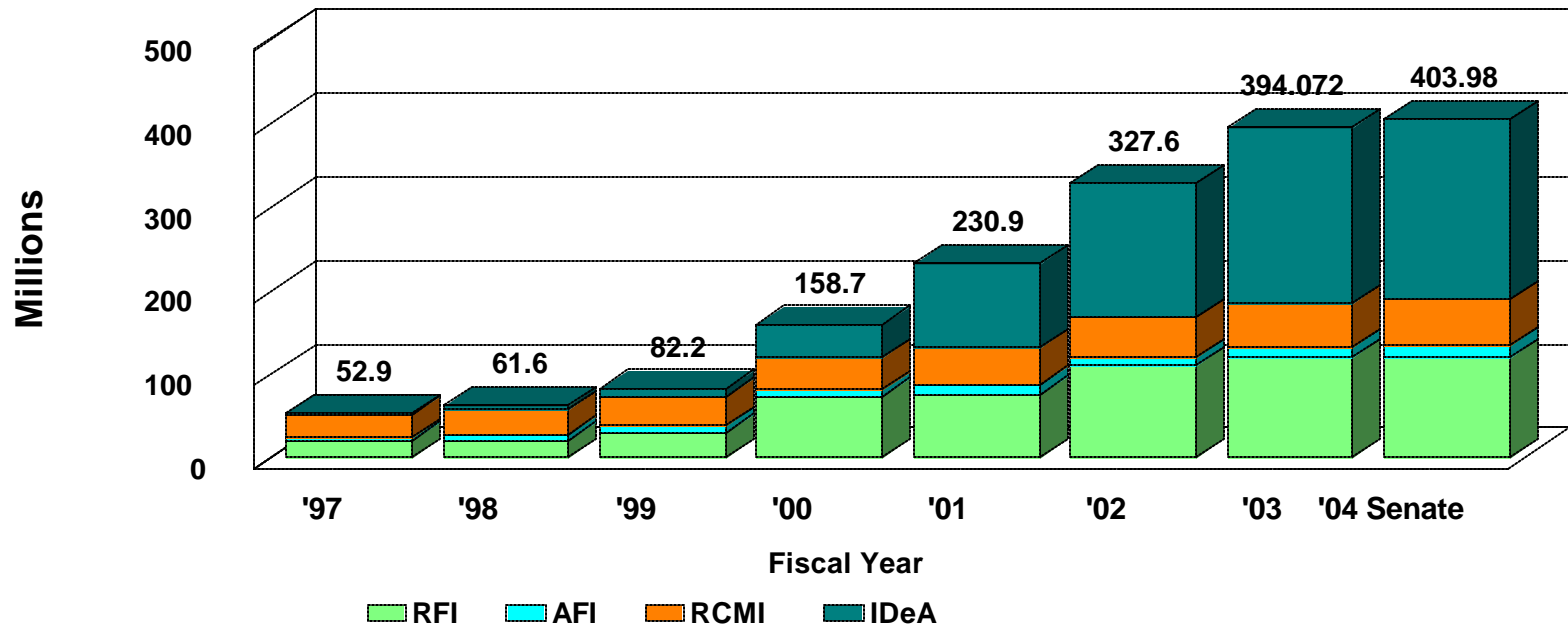
FY 2003 Appropriations (in thousands of dollars)



DRI Total: \$393,398,000

Division of Research Infrastructure

Budget History



Division of Research Infrastructure

Some NIH Collaborative Partners

- NIEHS
- NIDCR
- NIDDK
- NCI
- NEI
- NIAMS
- NIA
- NICHD
- NCMHD
- NIAID
- NHLBI
- NIDA
- OAR
- NINDS
- NIAAA
- NIMH



Division of Research Infrastructure Programs

- ✓ **Institutional Development Award (IDeA) Program**
- ✓ **Research Centers in Minority Institutions (RCMI) Program**
- ✓ **Facilities Improvement Programs**



Division of Research Infrastructure Institutional Development Award Program Historical

- ✓ **IDeA Program established in 1993**
- ✓ **Authorized in NIH Revitalization Act of 1993**
- ✓ **Congressional intent to enhance geographical distribution of research funds**
- ✓ **Comparable to NSF Experimental Program to Stimulate Competitiveness in Research (EPSCoR), established in 1980**
- ✓ **EPSCoR-like programs across 8 Federal Agencies (NIH, NSF, USDA, NASA, DOE, DOC, DOD, EPA)**



**Division of Research Infrastructure
Institutional Development Award Program**

COBRE Program - Objectives

- ✓ **To enhance the ability of investigators to compete independently for other NIH individual research grant or other external peer-reviewed support.**
- ✓ **To strengthen an institution's biomedical research infrastructure through the establishment of a multi-disciplinary center.**



Division of Research Infrastructure Institutional Development Award Program Eligibility Criteria

All states with a success rate for obtaining NIH grant awards of less than 20% over the period of 1997-2001.

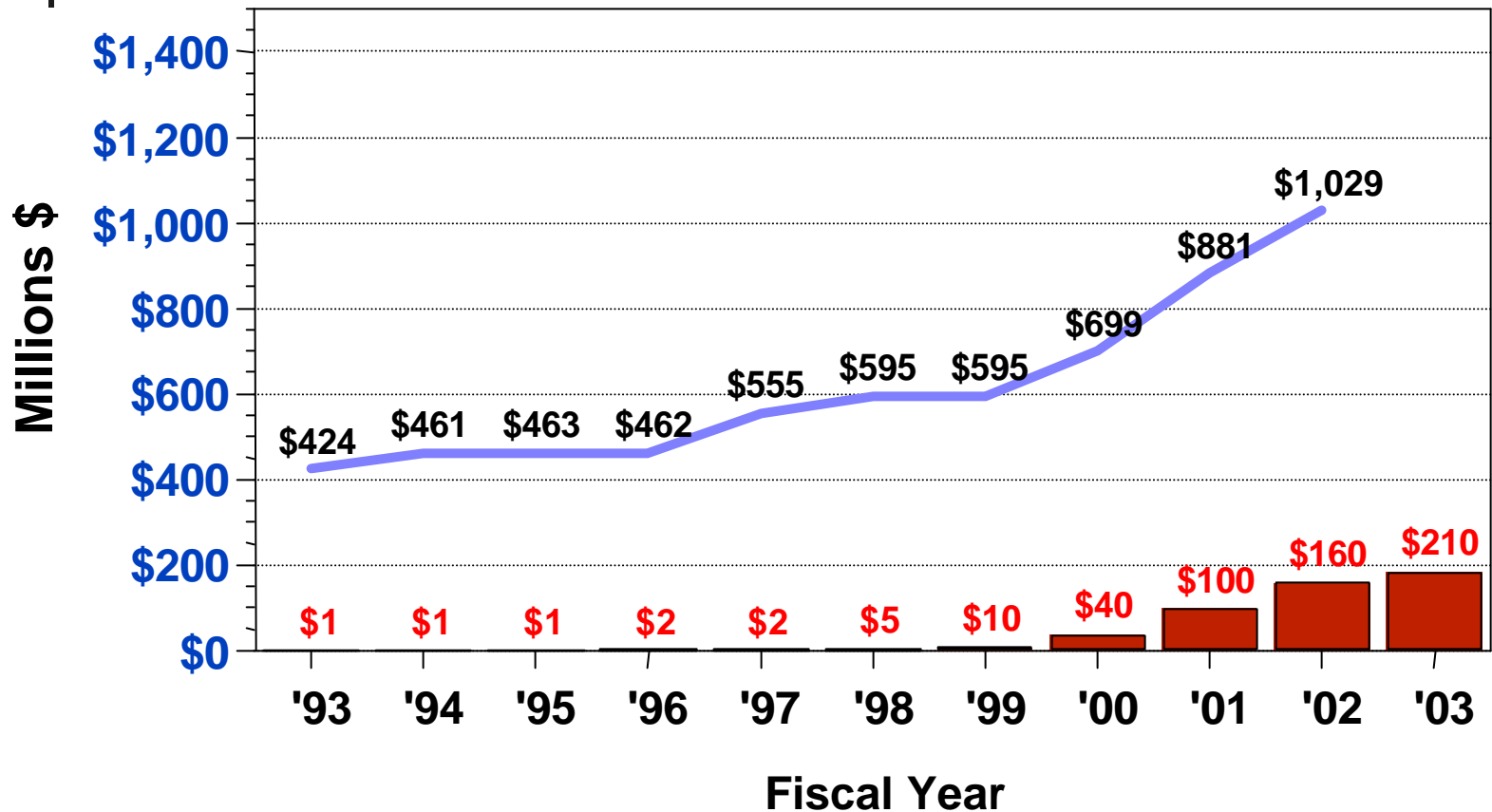
Also includes those states with higher success rates, but less than \$75 million average NIH funding over those five years.

IDeA-eligible States:

Alaska	Kentucky	Nevada	Rhode Island
Arkansas	Louisiana	New Hampshire	South Carolina
Delaware	Maine	New Mexico	South Dakota
Hawaii	Mississippi	North Dakota	Vermont
Idaho	Montana	Oklahoma	West Virginia
Kansas	Nebraska	Puerto Rico	Wyoming

Eligible: 23 states and Puerto Rico

Division of Research Infrastructure Institutional Development Award Program Funding



— NIH \$ Awards to IDeA states only ■ IDeA Program Funds

Division of Research Infrastructure Institutional Development Award Program

Past Progress

FY1993-1998

One year pilot studies, two and three year matching grants, shared instrumentation grants and Shannon-like awards (no match required)

FY 2000

New Program: **Centers of Biomedical Research Excellence (COBRE)**

FY 2001

New Program: **Biomedical Research Infrastructure Network (BRIN)**
and another round for **COBRE**

FY 2002

COBRE recompeted, 16 awards. $(16/48) = 33\%$

Competitive supplements to COBRE for alteration and renovation of animal or laboratory facilities and major instrumentation,
13 awards. $(13/28) = 46\%$

Competitive supplements for BRIN for project related activities,
11 awards. $(11/24) = 46\%$



Division of Research Infrastructure Institutional Development Award Program

COBRE Program - FY 2003 Plans

FY 2003

COBRE RFA released: September 24, 2002

RFA-RR-02-007; Receipt date: January 22, 2003

Anticipate making 10-12 awards subject to availability of funds.

Veterinary and Dental Schools are encouraged to apply.

Eligibility Criteria

No eligible institution can submit more than one application in response to the RFA.

Applications will NOT be accepted from institutions holding two or more active COBRE awards. Only institutions holding one or not holding any COBREs can submit an application.

If an institution is writing more than one application, it is the institution's responsibility to decide which single application to submit.

Division of Research Infrastructure Institutional Development Award Program

BRIN Program



Objectives:

- ✓ **Develop a competitive biomedical research base.**
- ✓ **Bring together the institutions (undergraduate & graduate schools) within the state to establish networks.**
- ✓ **Foster collaborations to enhance the development of the next generation of researchers.**
- ✓ **Develop areas of potential research through staff development and access to research resources.**
- ✓ **Strengthen research management within institutions.**

Core elements: Administration, bioinformatics and at least one optional core (training and mentoring, research, shared instrumentation).



Division of Research Infrastructure Research Centers in Minority Institutions Objectives

- ✓ **RCMI Program established in 1985 by Congress**
- ✓ **Expand the nation's capacity for the conduct of biomedical and behavioral research at minority doctoral degree-granting institutions**
- ✓ **Strengthen research environments and improve faculty research competitiveness**
- ✓ **Collaborations: AIDS-related research, health disparities, neuroscience and other research foci**



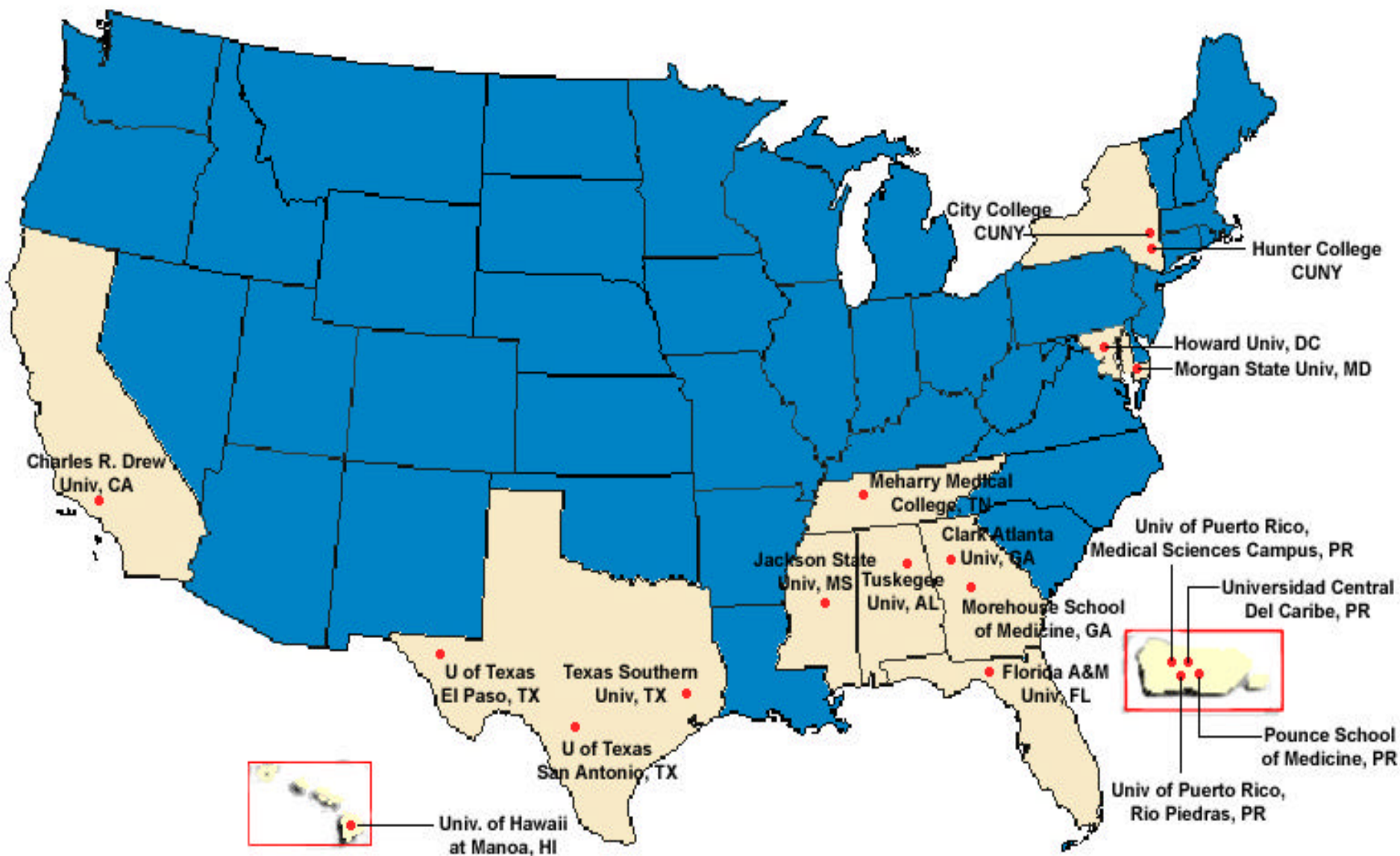
Division of Research Infrastructure

Research Centers in Minority Institutions

Eligibility Criteria

- ✓ **College or University with 50% or greater enrollment of students who are underrepresented in biomedical sciences (African Americans, Hispanics, Native Americans, Alaskan Natives, Native Hawaiians and Pacific Islanders)**
- ✓ **Award doctoral degrees in the health professions or health-related sciences**
- ✓ **There are currently 19 Centers in 10 states, the District of Columbia and Puerto Rico**

NIH-NCRR: RCMI SITES





Division of Research Infrastructure Research Centers in Minority Institutions Research Plan

- ✓ **A self-assessment of Institutional biomedical and/or behavioral research capacity**
- ✓ **Program plans to enhance biomedical research capacity consistent with the long-range goals of the institution**
- ✓ **Identification of a thematic scientific focus**
- ✓ **Support may be provided for core administrative staff; faculty development and expansion; equipment; grants management and research development activities; renovation of labs and animal facilities; and pilot projects**



**Division of Research Infrastructure
Research Centers in Minority Institutions
Clinical Research Infrastructure Initiative
Objective**

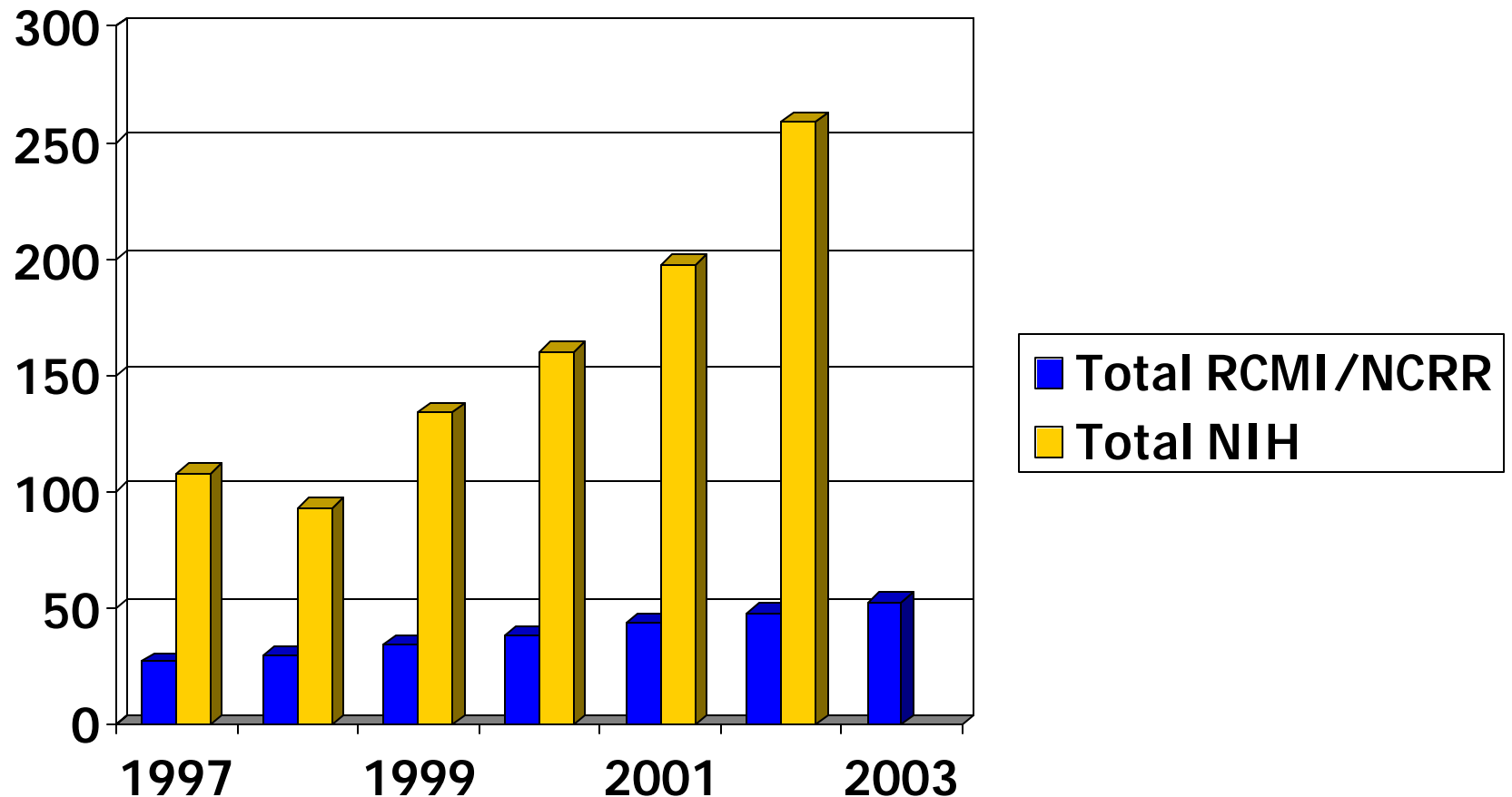
- ✓ **RCRII Program (Outpatient Clinical Research Units) established in 1995**
- ✓ **Objective: To expand the nation's capacity for clinical research by developing the research infrastructure at eligible minority institutions.**
- ✓ **Institutions with RCMI-supported Clinical Research Units:**
 - Charles Drew University of Medicine and Science**
 - Meharry Medical College**
 - Morehouse School of Medicine**
 - University of Hawaii at Manoa**
 - University of Puerto Rico, Medical Sciences Campus**



**Division of Research Infrastructure
Research Centers in Minority Institutions
Centers of Clinical Research Excellence**

- ✓ **Centers of Clinical Research Excellence (CCRE) established in 1999**
- ✓ **Objective: to expand the capacity of RCMI-supported medical schools to conduct clinical research through recruitment of magnet clinical investigators**
- ✓ **Three CCRE at Charles R. Drew University of Medicine and Science, the University of Hawaii, and the Morehouse School of Medicine**

Division of Research Infrastructure Research Centers in Minority Institutions Budget History (in millions)





**Division of Research Infrastructure
Research Centers in Minority Institutions
FY 03 Activities**

- ✓ **FY 2003 Budget of \$52.7M; plus \$3.7M co-funding (to date)**
- ✓ **\$46.1M to fund RCMI (19), RCRII (5), and CCRE (3);**
- ✓ **\$2.3M to fund 3 competitive supplements to RCMI Institutions for (developing technology infrastructure and research core development)**



Division of Research Infrastructure Research Centers in Minority Institutions FY 03 Activities

- ✓ **\$1.18M (0.25M from NCRR) to co-fund 3 Clinical Research Education and Career Development Awards at Meharry Medical College, the University of Puerto Rico, Medical Sciences Campus, and the Morehouse School of Medicine (RFA AR-01-009 - NIAMS, NCMHD, NIDDK, NHLBI, NEI, NIA, NIDA)**
- ✓ **\$4.5M to co-fund 8 Specialized Neuroscience Center Grants (SNRP) with NINDS**



Division of Research Infrastructure

Research Centers in Minority Institutions

Activities

FY 03 Initiatives include:

- ✓ Funding 2-3 **Comprehensive Centers on Health Disparities** (\$1.5M) in response to RFA RR-03-004 and co-funding for the **SPIRP** (\$0.25M) at Morehouse School of Medicine)
- ✓ Co-funding of 2 **Cooperative Reproductive Science Centers** in Minority Institutions with NICHD (\$1.0M)
- ✓ Co-funding 2-3 additional **Clinical Research Education and Career Development Awards** (\$0.29M) in response to RFA RR-03-007
- ✓ Administrative supplements to **enhance the communications technology infrastructure at RCMI**s (\$2.7M)

Research Centers in Minority Institutions

Eighth RCMI International Symposium on Health Disparities

- ✓ **Initiated in 1988, originally called the RCMI International AIDS Symposium, until the sixth meeting in San Juan, PR**
- ✓ **Re-named the International Symposium on Health Disparities in 2000, to call attention to the need to reduce and eliminate health disparities by the year 2010**



**Eighth RCMI International Symposium
on Health Disparities 2002**

Sheraton Waikiki Hotel, Honolulu, Hawaii . December 8-11, 2002



8th RCM International Symposium on Health Disparities

- **Over 250 scientific sessions** highlighted the environmental, economic, cultural, bio-behavioral and genetic bases of health disparities in
 - ✓ **Cancer**
 - ✓ **Cardiovascular disease**
 - ✓ **Diabetes**
 - ✓ **HIV/AIDS**
 - ✓ **Asthma and autoimmunity**
 - ✓ **Perinatology and reproductive biology**
 - ✓ **Neuroscience**

- **9th RCM International Symposium on Health Disparities**

December 8-14, 2004 in Baltimore, MD

National Center for Research Resources

Division of Research Infrastructure

Future Directions

- ✓ **Comprehensive Centers on Health Disparities (RCMI)**
- ✓ **Faculty/Student Development Program (RCMI/IDeA)**
- ✓ **Clinical Research Networks (RCMI)**
- ✓ **Networking/Internet-2 (RCMI/IDeA)**
- ✓ **Loan Repayment Program (RCMI)**
- ✓ **Loan Guarantee Program (new construction)**
- ✓ **Two-tiered Construction Program**
 - \$ 20-25 million (large)**
 - \$ 3-5 million (small)**

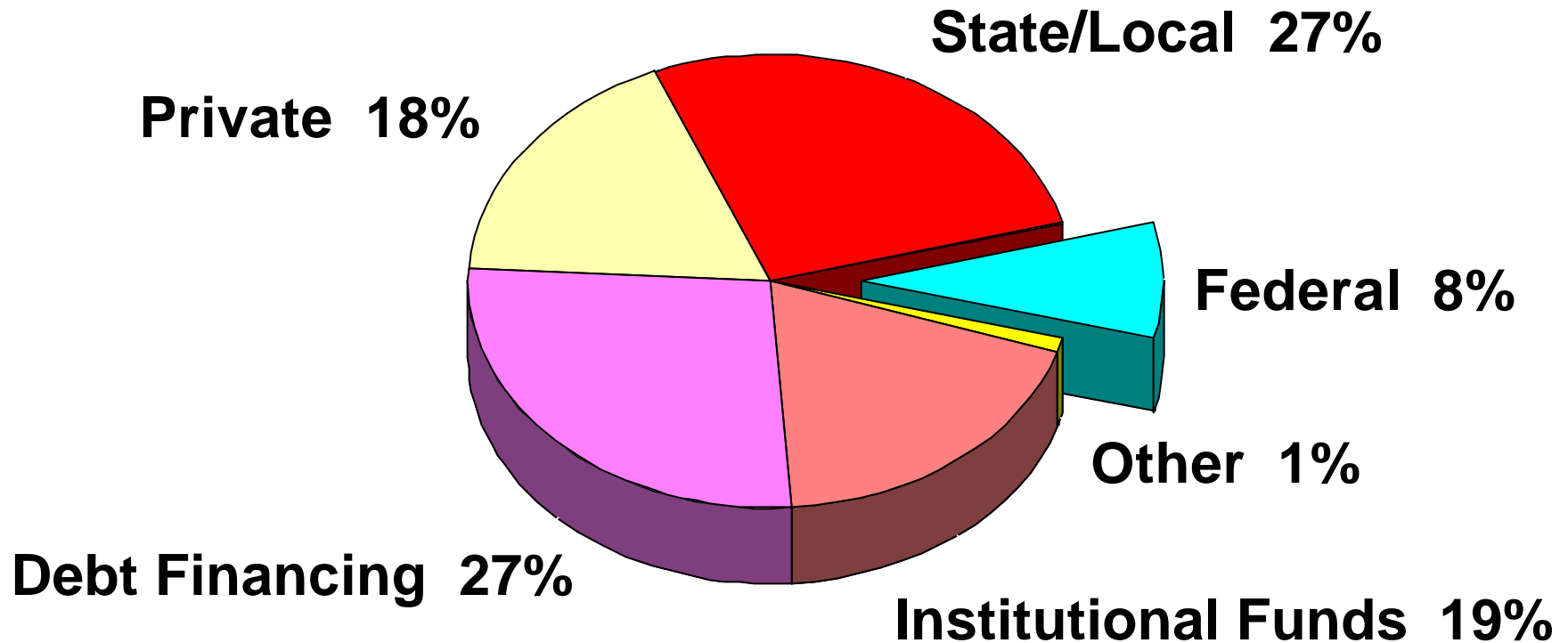


Division of Research Infrastructure Facilities Improvement Programs

- ✓ **The Research Facility Improvement (RFI) Program**
- ✓ **The Animal Facility Improvement (AFI) Program**

Division of Research Infrastructure Research Facilities Improvement Program

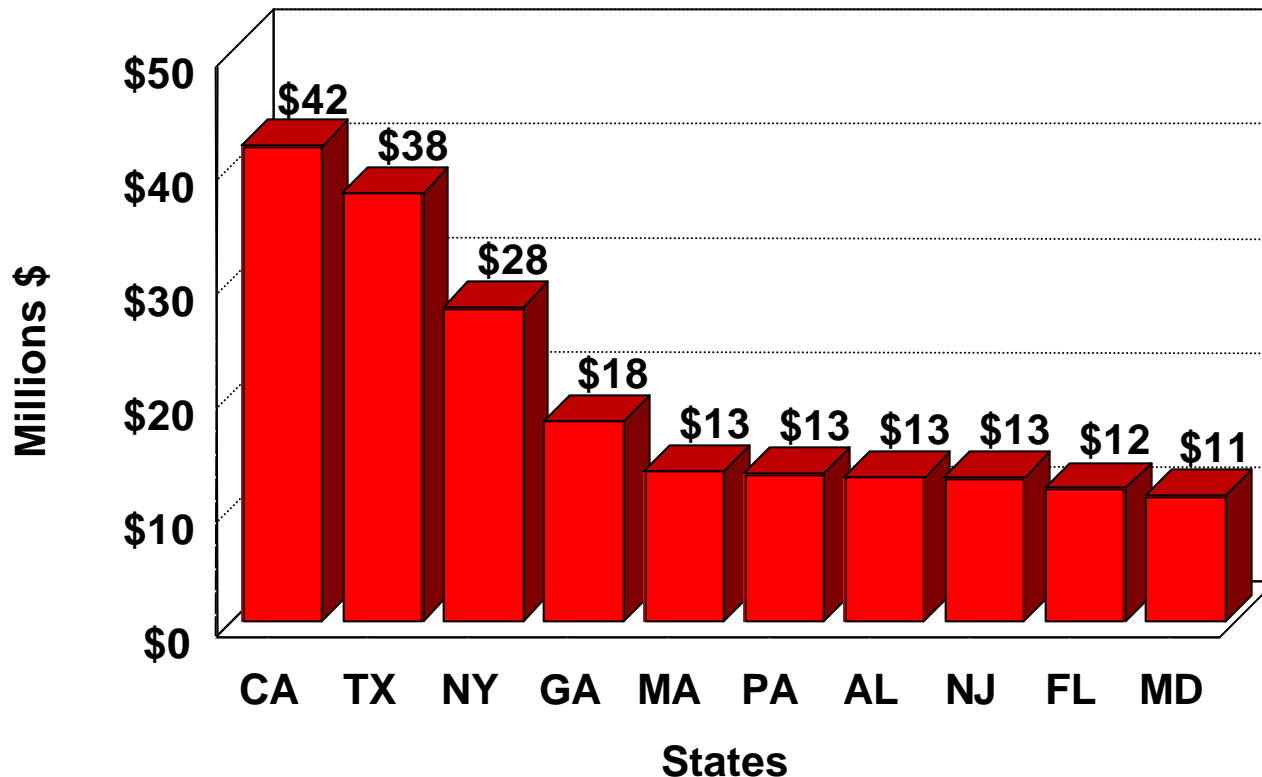
Sources of Funding for Construction of
Biomedical Research Facilities in USA (1996-97)*



*Total amount: \$1.605B (projects costing at least \$100K).

Division of Research Infrastructure Research Facilities Improvement Program

RFIP Construction Awards (C06) To Top Ten States: FY 1994-2002*



* The total for all FYs 1994 to 2002 awards is \$368 million (225 grants).