

A Preliminary Guide to Creating 94x Return Transmission Files

Updated: June 14, 2002

This document describes the procedure for creating a sample 94x return transmission file with dummy return data.

Assumptions

1. The 94x XML Schemas Final Release 2.0 will be used as the base schemas for creating the XML data instances.
2. XML Spy Suite 4.3 is used as the tool for creating and validating XML data instances generated from the aforementioned base schemas.
3. All optional fields will be created to illustrate the widest spectrum of data combinations. The actual definitions of required vs. optional fields can be found in the base schemas.
4. All XML data instances generated are kept in the instances subdirectory directly under the root of the 94x XML schemas package. If placed elsewhere, the `xsi:schemaLocation` attributes in all data instances generated need to be modified to reflect the location of the XML instance relative to other schemas.

Step 1 – Create 94x Return Transmission Envelope

◆ Step 1.1: Create Transmission Envelope Skeleton

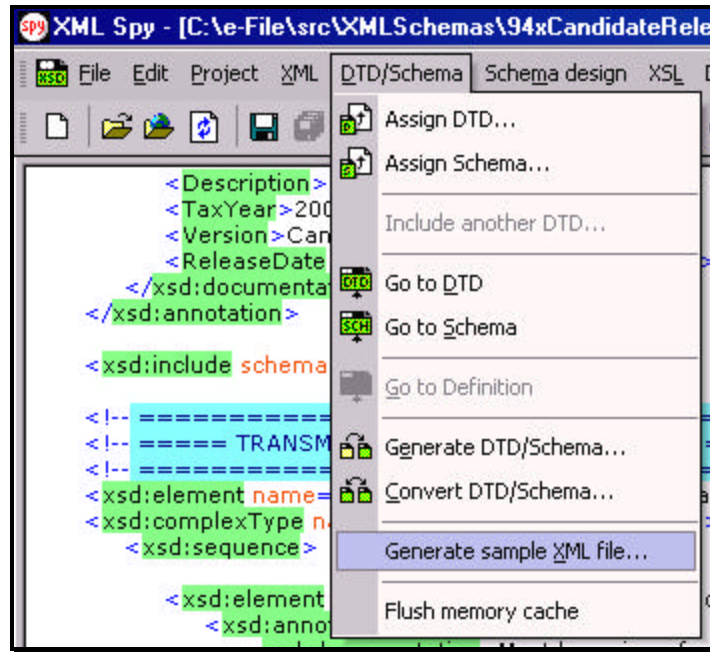
Create the transmission envelope skeleton as outlined below. After filling in the placeholders, it becomes the SOAP Envelope in the transmission file.

```
<?xml version="1.0" encoding="UTF-8"?>
<SOAP:Envelope xmlns="http://www.irs.gov/efile"
xmlns:xsi="http://www.w3.org/2001/XMLSchema-instance"
xmlns:SOAP="http://schemas.xmlsoap.org/soap/envelope/"
xmlns:efile="http://www.irs.gov/efile"
xsi:schemaLocation="http://schemas.xmlsoap.org/soap/envelope/ ../message/SOAP.xsd
http://www.irs.gov/efile ../message/efileMessage.xsd">
  <SOAP:Header>
    Placeholder for TransmissionHeader
  </SOAP:Header>
  <SOAP:Body>
    Placeholder for OriginHeaders
  </SOAP:Body>
</SOAP:Envelope>
```

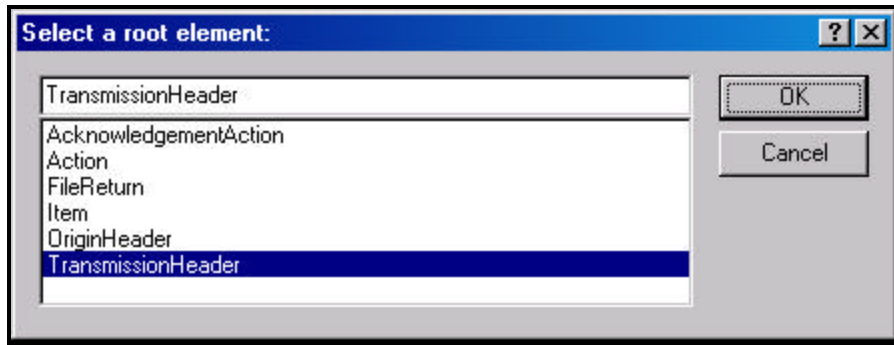
A Preliminary Guide to Creating 94x Return Transmission Files

◆ Step 1.2: Create TransmissionHeader

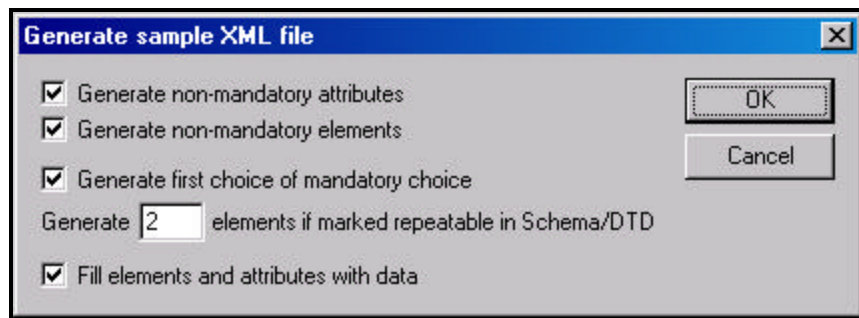
Open message/efileMessage.xsd in XML Spy and select DTD/Schema from the main menu. Next select Generate sample XML file...



Select TransmissionHeader from the pop-up menu shown below:



Check all options in the following pop-up menu and specify 2 (or more) repeatable elements so that repeating structures are illustrated in the sample data.




A Preliminary Guide to Creating 94x Return Transmission Files

You now have an XML Spy generated XML data structure for the TransmissionHeader.

◆ Step 1.3: Complete the Placeholder for TransmissionHeader

In the TransmissionHeader data structure:

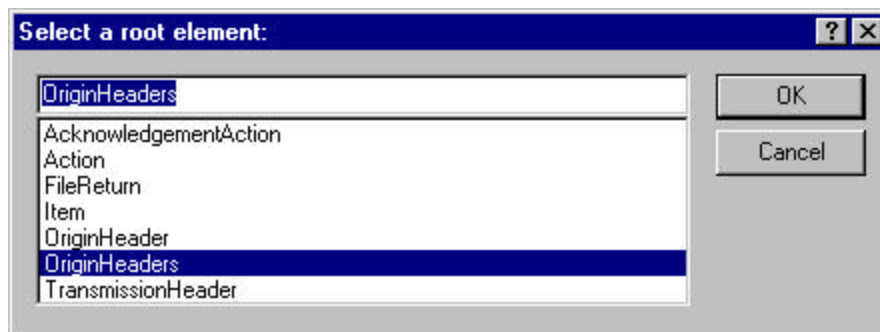
1. Remove all attributes in the TransmissionHeader element and prefix the element name (begin and end tags) with efile:
2. Edit the data as you see fit.
3. Validate the Transmission Envelope in XML Spy by clicking on the  button on the tool bar.

The complete TransmissionHeader is shown below:

```
<efile:TransmissionHeader>
  <TransmissionId>MyUniqueTransID001</TransmissionId>
  <Timestamp>2001-12-17T09:30:47-05:00</Timestamp>
  <Transmitter>
    <ETIN>00200</ETIN>
  </Transmitter>
  <ProcessType>T</ProcessType>
  <TransmissionManifest originHeaderCount="2">
    <OriginHeaderReference originId="MyUniqueOrigID001"/>
    <OriginHeaderReference originId="MyUniqueOrigID002"/>
  </TransmissionManifest>
</efile:TransmissionHeader>
```

◆ Step 1.4: Create OriginHeaders

Repeat Step 1.2 but this time select OriginHeaders as the root element:

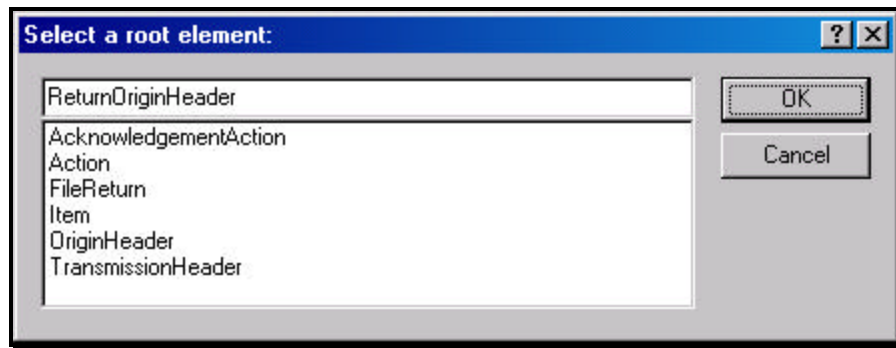


You now have an XML Spy generated XML data structure for the OriginHeaders with two occurrences of PINRegistrationOriginHeader.

A Preliminary Guide to Creating 94x Return Transmission Files

◆ Step 1.5: ReturnOriginHeader

Repeat Step 1.2 but this time type ReturnOriginHeader as the root element:




Now you have a stand-alone ReturnOriginHeader structure that can be used to replace the PINRegistrationOriginHeader structures generated previously.

In the ReturnOriginHeader data structure:

1. Remove all attributes in the ReturnOriginHeader elements.

◆ Step 1.6: Complete the Placeholder for OriginHeaders

In the OriginHeaders data structure:

1. Remove all attributes in the OriginHeaders element and prefix the element name (begin and end tags) with efile:
2. Replace each of the two PINRegistrationOriginHeader structures with the ReturnOriginHeader.
3. Edit the data as you see fit. Make sure all instances of originId and contentLocation are correctly referenced in the manifests. The originId attribute must match the value of the OriginId element in the ReturnOriginHeader, and the contentLocation attribute must match the value of the ContentLocation element in ReturnData and the Content-Location: line to be generated in Step 3. The OriginId and ContentLocation must be unique within the transmission file.
4. Validate the Transmission Envelope in XML Spy by clicking on the  button on the tool bar.

You now have an XML Spy generated XML data structure for the OriginHeaders that could look like this:

```
<efile:OriginHeaders>
  <ReturnOriginHeader>
    <OriginId>MyUniqueOrigID001</OriginId>
    <Timestamp>2001-12-17T09:30:47-05:00</Timestamp>
    <OriginManifest itemCount="2">
      <ItemReference contentLocation="MyUnique001ReturnId"/>
      <ItemReference contentLocation="MyUnique002ReturnId"/>
    </OriginManifest>
    <Originator>
```

A Preliminary Guide to Creating 94x Return Transmission Files

```
<EFIN>510000</EFIN>
  <Type>ReportingAgent</Type>
</Originator>
<ReportingAgentSignature>
  <PIN>00000</PIN>
  <ETIN>00000</ETIN>
</ReportingAgentSignature>
<ISPNumber>AAAAAA</ISPNumber>
</ReturnOriginHeader>
<ReturnOriginHeader>
  <OriginId>MyUniqueOrigID002</OriginId>
  <Timestamp>2001-12-17T09:30:47-05:00</Timestamp>
  <OriginManifest itemCount="2">
    <ItemReference contentLocation="999999RetData20020617T093047"/>
    <ItemReference contentLocation="999999RetData20020617T093101"/>
  </OriginManifest>
  <Originator>
    <EFIN>999999</EFIN>
    <Type>ERO</Type>
  </Originator>
  <ISPNumber>AAAAAA</ISPNumber>
</ReturnOriginHeader>
</efile:OriginHeaders>
```

◆ Step 1.7: Complete the Transmission Envelope

Complete the Transmission Envelope:

1. Plug the TransmissionHeader created in Step 1.3 into the Placeholder for TransmissionHeader defined in Step 1.1
2. Plug the OriginHeaders structure created in Step 1.6 into the Placeholder for OriginHeaders defined in Step 1.1


The complete Transmission Envelope is shown below:

```
<?xml version="1.0" encoding="UTF-8"?>
<SOAP:Envelope xmlns="http://www.irs.gov/efile"
xmlns:xsi="http://www.w3.org/2001/XMLSchema-instance"
xmlns:SOAP="http://schemas.xmlsoap.org/soap/envelope/"
xmlns:efile="http://www.irs.gov/efile"
xsi:schemaLocation="http://schemas.xmlsoap.org/soap/envelope/ ../message/SOAP.xsd
http://www.irs.gov/efile ../message/efileMessage.xsd">
  <SOAP:Header>
    <efile:TransmissionHeader>
      <TransmissionId>MyUniqueTransID001</TransmissionId>
      <Timestamp>2001-12-17T09:30:47-05:00</Timestamp>
      <Transmitter>
        <ETIN>00200</ETIN>
      </Transmitter>
      <ProcessType>T</ProcessType>
      <TransmissionManifest originHeaderCount="2">
        <OriginHeaderReference originId="MyUniqueOrigID001"/>
        <OriginHeaderReference originId="MyUniqueOrigID002"/>
      </TransmissionManifest>
    </efile:TransmissionHeader>
  </SOAP:Header>
</SOAP:Body>
```

A Preliminary Guide to Creating 94x Return Transmission Files

```
<efile:OriginHeaders>
  <ReturnOriginHeader>
    <OriginId>MyUniqueOrigID001</OriginId>
    <Timestamp>2001-12-17T09:30:47-05:00</Timestamp>
    <OriginManifest itemCount="2">
      <ItemReference contentLocation="MyUnique001ReturnId"/>
      <ItemReference contentLocation="MyUnique002ReturnId"/>
    </OriginManifest>
    <Originator>
      <EFIN>510000</EFIN>
      <Type>ReportingAgent</Type>
    </Originator>
    <ReportingAgentSignature>
      <PIN>00000</PIN>
      <ETIN>00000</ETIN>
    </ReportingAgentSignature>
    <ISPNumber>AAAAAA</ISPNumber>
  </ReturnOriginHeader>
  <ReturnOriginHeader>
    <OriginId>MyUniqueOrigID002</OriginId>
    <Timestamp>2001-12-17T09:30:47-05:00</Timestamp>
    <OriginManifest itemCount="2">
      <ItemReference contentLocation="999999RetData20020617T093047"/>
      <ItemReference contentLocation="999999RetData20020617T093101"/>
    </OriginManifest>
    <Originator>
      <EFIN>999999</EFIN>
      <Type>ERO</Type>
    </Originator>
    <ISPNumber>AAAAAA</ISPNumber>
  </ReturnOriginHeader>
</efile:OriginHeaders>
</SOAP:Body>
</SOAP:Envelope>
```

◆ Step 1.8: Validate the Transmission Envelope

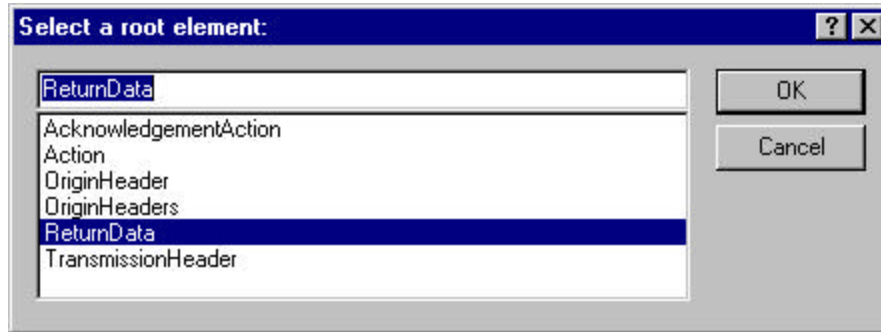
1. Edit the dummy data in the Transmission Envelope as you see fit.
2. Validate the Transmission Envelope in XML Spy by clicking on the  button on the tool bar.
3. Correct the data, if necessary, and re-validate.

A Preliminary Guide to Creating 94x Return Transmission Files

Step 2 – Create ReturnData MIME Parts


◆ Step 2.1: Create ReturnData

Repeat Step 1.2 with the 94x/ReturnData941.xsd schema file (or other ReturnData94x.xsd for other return types). This time select ReturnData as the root element:



You now have an XML Spy generated XML data structure for ReturnData with all potential parts in a return.

◆ Step 2.2: Validate ReturnData

1. Edit the dummy data in ReturnData as below or as you see fit.
2. Validate the ReturnData in XML Spy by clicking on the  button on the tool bar.
3. Correct the data, if necessary, and re-validate.

You now have an XML Spy generated XML data structure for ReturnData that could look like this:

```
<?xml version="1.0" encoding="UTF-8"?>
<ReturnData xmlns="http://www.irs.gov/efile"
xmlns:xsi="http://www.w3.org/2001/XMLSchema-instance"
xsi:schemaLocation="http://www.irs.gov/efile
..\94x\ReturnData941.xsd" documentCount="10">

  <ContentLocation>999999RetData20020617T093101</ContentLocation>
  <ReturnHeader94x documentId="1RetDID">
    <ElectronicPostmark>2001-12-17T09:30:47-05:00</ElectronicPostmark>
    <TaxPeriodEndDate>1967-08-13</TaxPeriodEndDate>
    <DisasterRelief>! !</DisasterRelief>
    <ISPNumber>AAAAAA</ISPNumber>
    <PreparerFirm>
      <EIN>010000009</EIN>
      <BusinessName1>A A</BusinessName1>
      <BusinessName2>A A</BusinessName2>
      <Address1>A A</Address1>
      <Address2>A A</Address2>
      <City>A A</City>
      <State>AL</State>
      <ZIPCode>000000000</ZIPCode>
    </PreparerFirm>
    <SoftwareId>00000000</SoftwareId>
    <ReturnType>941</ReturnType>
    <Business>
```

A Preliminary Guide to Creating 94x Return Transmission Files

```
<EIN>010000000</EIN>
<BusinessName1>A A</BusinessName1>
<BusinessName2>A A</BusinessName2>
<BusinessNameControl>A</BusinessNameControl>
<Address1>A A</Address1>
<Address2>A A</Address2>
<City>A A</City>
<State>AL</State>
<ZIPCode>000000000</ZIPCode>
<AddressChange>X</AddressChange>
</Business>
<Preparer>
  <Name>A A</Name>
  <SSN>000000000</SSN>
  <Phone>5666446645</Phone>
  <EmailAddress>A@0.0.0.0</EmailAddress>
  <SelfEmployed>X</SelfEmployed>
</Preparer>
<ReturnSigner>
  <Name>A A</Name>
  <Title>! !</Title>
  <Phone>5699666660</Phone>
  <EmailAddress>A@0.0.0.0</EmailAddress>
  <Signature>000000000</Signature>
  <DateSigned>1967-08-13</DateSigned>
</ReturnSigner>
<ThirdPartyAuthorization>
  <AuthorizeThirdParty>X</AuthorizeThirdParty>
  <DesigneeName>A A</DesigneeName>
  <DesigneePhone>4589599628</DesigneePhone>
  <DPIN>AAAAAAAAA</DPIN>
</ThirdPartyAuthorization>
</ReturnHeader94x>
<IRS941 documentId="2RetDID">
  <DepositStateCode>AL</DepositStateCode>
  <FinalReturn>X</FinalReturn>
  <AmendedReturn>X</AmendedReturn>
  <DateFinalWagesPaid>1967-08-13</DateFinalWagesPaid>
  <SeasonalEmployer>X</SeasonalEmployer>
  <NumberOfEmployees>1</NumberOfEmployees>
  <TotalWages>0.00</TotalWages>
  <TotalIncomeTaxWithheld>0.00</TotalIncomeTaxWithheld>
  <WithheldIncomeTaxAdjustment>+99999999.9</WithheldIncomeTaxAdjustment>
  <AdjustedTotalIncomeTaxWithheld>-
99999999.99</AdjustedTotalIncomeTaxWithheld>
  <TaxableSocialSecurityWages>0.00</TaxableSocialSecurityWages>
  <TaxOnSocialSecurityWages>0.00</TaxOnSocialSecurityWages>
  <TaxableSocialSecurityTips>0.00</TaxableSocialSecurityTips>
  <TaxOnSocialSecurityTips>0.00</TaxOnSocialSecurityTips>
  <TaxableMedicareWagesTips>0.00</TaxableMedicareWagesTips>
  <TaxOnMedicareWagesTips>0.00</TaxOnMedicareWagesTips>
  <WagesNotSubjToSSMedicareTaxes>X</WagesNotSubjToSSMedicareTaxes>
  <TotalSocialSecurityMedTaxes>0.00</TotalSocialSecurityMedTaxes>
  <SickPayAdjustment>3.14</SickPayAdjustment>
  <FractionsOfCentsAdjustment>3.14</FractionsOfCentsAdjustment>
  <OtherAdjustment>3.14</OtherAdjustment>
  <TotalAdjustmentSSMedicareTaxes>3.14</TotalAdjustmentSSMedicareTaxes>
  <AdjustedTotalSSMedicareTaxes>0.00</AdjustedTotalSSMedicareTaxes>
  <TotalTax>0.00</TotalTax>
  <AdvanceEarnedIncomeCreditPymts>0.00</AdvanceEarnedIncomeCreditPymts>
  <NetTaxes>0.00</NetTaxes>
```


A Preliminary Guide to Creating 94x Return Transmission Files

```
<TotalDepositsOverpaymentForQtr>0.00</TotalDepositsOverpaymentForQtr>
<BalanceDue>0.00</BalanceDue>
<SemiweeklyScheduleDepositor>X</SemiweeklyScheduleDepositor>
<Month1Liability>0.00</Month1Liability>
<Month2Liability>0.00</Month2Liability>
<Month3Liability>0.00</Month3Liability>
<TotalQuarterLiability>0.00</TotalQuarterLiability>
</IRS941>
<AmendedReturnExplanation documentId="3RetDID">
  <Explanation>! !</Explanation>
</AmendedReturnExplanation>
<WgNotSubjToSSMedTaxExplanation documentId="4RetDID">
  <Explanation>! !</Explanation>
</WgNotSubjToSSMedTaxExplanation>
<SickPayAdjustmentExplanation documentId="5RetDID">
  <Explanation>! !</Explanation>
</SickPayAdjustmentExplanation>
<FractionsOfCentsAdjExplanation documentId="6RetDID">
  <Explanation>! !</Explanation>
</FractionsOfCentsAdjExplanation>
<OtherAdjustmentExplanation documentId="7RetDID">
  <Explanation>! !</Explanation>
</OtherAdjustmentExplanation>
<IRS941ScheduleB documentId="8RetDID">
  <Month1Liabilities>
    <LiabilityAmount liabilityDay="31">0.00</LiabilityAmount>
    <LiabilityAmount liabilityDay="31">0.00</LiabilityAmount>
  </Month1Liabilities>
  <TotalMonth1Liability>0.00</TotalMonth1Liability>
  <Month2Liabilities>
    <LiabilityAmount liabilityDay="31">0.00</LiabilityAmount>
    <LiabilityAmount liabilityDay="31">0.00</LiabilityAmount>
  </Month2Liabilities>
  <TotalMonth2Liability>0.00</TotalMonth2Liability>
  <Month3Liabilities>
    <LiabilityAmount liabilityDay="31">0.00</LiabilityAmount>
    <LiabilityAmount liabilityDay="31">0.00</LiabilityAmount>
  </Month3Liabilities>
  <TotalMonth3Liability>0.00</TotalMonth3Liability>
  <TotalQuarterLiability>0.00</TotalQuarterLiability>
</IRS941ScheduleB>
<IRS941c documentId="9RetDID">
  <DateErrorDiscovered>1967-08-13</DateErrorDiscovered>
  <Certification1>X</Certification1>
  <Certification2>X</Certification2>
  <Certification3>X</Certification3>
  <Certification4>X</Certification4>
  <IncomeTaxWithholdingAdjustment>
    <PeriodCorrectedEndDate>1000-03-31</PeriodCorrectedEndDate>
    <WithheldTaxPreviouslyReported>0.00</WithheldTaxPreviouslyReported>
    <CorrectWithheldTax>0.00</CorrectWithheldTax>
    <WithheldTaxAdjustmentForPeriod>0.00</WithheldTaxAdjustmentForPeriod>
  </IncomeTaxWithholdingAdjustment>
  <IncomeTaxWithholdingAdjustment>
    <PeriodCorrectedEndDate>1000-03-31</PeriodCorrectedEndDate>
    <WithheldTaxPreviouslyReported>0.00</WithheldTaxPreviouslyReported>
    <CorrectWithheldTax>0.00</CorrectWithheldTax>
    <WithheldTaxAdjustmentForPeriod>0.00</WithheldTaxAdjustmentForPeriod>
  </IncomeTaxWithholdingAdjustment>
  <NetWithheldIncomeTaxAdjustment>3.14</NetWithheldIncomeTaxAdjustment>
  <SocialSecurityTaxAdjustment>
```

A Preliminary Guide to Creating 94x Return Transmission Files

```
<PeriodCorrectedEndDate>1000-03-31</PeriodCorrectedEndDate>
<SocialSecurityWagesPrevRpt>0.00</SocialSecurityWagesPrevRpt>
<CorrectSocialSecurityWages>0.00</CorrectSocialSecurityWages>
<SocialSecurityTipsPrevRpt>0.00</SocialSecurityTipsPrevRpt>
<CorrectSocialSecurityTips>0.00</CorrectSocialSecurityTips>
<SocialSecurityTaxAdjForPeriod>3.14</SocialSecurityTaxAdjForPeriod>
</SocialSecurityTaxAdjustment>
<SocialSecurityTaxAdjustment>
  <PeriodCorrectedEndDate>1000-03-31</PeriodCorrectedEndDate>
  <SocialSecurityWagesPrevRpt>0.00</SocialSecurityWagesPrevRpt>
  <CorrectSocialSecurityWages>0.00</CorrectSocialSecurityWages>
  <SocialSecurityTipsPrevRpt>0.00</SocialSecurityTipsPrevRpt>
  <CorrectSocialSecurityTips>0.00</CorrectSocialSecurityTips>
  <SocialSecurityTaxAdjForPeriod>3.14</SocialSecurityTaxAdjForPeriod>
</SocialSecurityTaxAdjustment>
<TotalSocialSecurityWgsPrevRpt>0.00</TotalSocialSecurityWgsPrevRpt>
<TotalCorrectSocialSecurityWgs>0.00</TotalCorrectSocialSecurityWgs>
<TotalSocialSecurityTipsPrevRpt>0.00</TotalSocialSecurityTipsPrevRpt>
<TotalCorrectSocialSecurityTips>0.00</TotalCorrectSocialSecurityTips>
<NetSocialSecurityTaxAdjustment>3.14</NetSocialSecurityTaxAdjustment>
<NetSocialSecurityWageAdj>3.14</NetSocialSecurityWageAdj>
<NetSocialSecurityTipAdjustment>3.14</NetSocialSecurityTipAdjustment>
<MedicareTaxAdjustment>
  <PeriodCorrectedEndDate>1000-03-31</PeriodCorrectedEndDate>
  <MedicareWagesTipsPreviouslyRpt>0.00</MedicareWagesTipsPreviouslyRpt>
  <CorrectMedicareWagesTips>0.00</CorrectMedicareWagesTips>
  <MedicareTaxAdjustmentForPeriod>3.14</MedicareTaxAdjustmentForPeriod>
</MedicareTaxAdjustment>
<MedicareTaxAdjustment>
  <PeriodCorrectedEndDate>1000-03-31</PeriodCorrectedEndDate>
  <MedicareWagesTipsPreviouslyRpt>0.00</MedicareWagesTipsPreviouslyRpt>
  <CorrectMedicareWagesTips>0.00</CorrectMedicareWagesTips>
  <MedicareTaxAdjustmentForPeriod>3.14</MedicareTaxAdjustmentForPeriod>
</MedicareTaxAdjustment>
<TotalMedicareWagesTipsPrevRpt>0.00</TotalMedicareWagesTipsPrevRpt>
<TotalCorrectMedicareWagesTips>0.00</TotalCorrectMedicareWagesTips>
<NetMedicareTaxAdjustment>3.14</NetMedicareTaxAdjustment>
<NetMedicareWageTipAdjustment>3.14</NetMedicareWageTipAdjustment>
<AdjustmentsExplanation>! !</AdjustmentsExplanation>
</IRS941c>
<IRS94xPayment documentId="10RetDID">
  <RoutingTransitNumber>010000000</RoutingTransitNumber>
  <BankAccountNumber>A A</BankAccountNumber>
  <AccountType>1</AccountType>
  <PaymentAmount>3.14</PaymentAmount>
  <TaxpayerDaytimePhone>5548669620</TaxpayerDaytimePhone>
</IRS94xPayment>
</ReturnData>
```

◆ Step 2.3: Duplicate ReturnData

1. Duplicate the ReturnData structure 3 times to create a sequence of 4 separate ReturnData structures.
2. Edit the data in ReturnData as you see fit.
3. Make sure all instances of the attribute contentLocation in the OriginManifest of the ReturnOriginHeader match one referenced element ContentLocation in each ReturnData. The ContentLocation must be unique within the transmission file.

A Preliminary Guide to Creating 94x Return Transmission Files

4. Edit the documentId attribute for each return document in ReturnData. The documentId must be unique within the return.

Step 3 – Create 94x Return Transmission File

Now that you have the validated Transmission Envelope and the ReturnData MIME parts, you are ready to put it all together.

Create the transmission file according to the structure outlined below. Please note the following:

1. Required MIME content headers are **highlighted**.
2. Line spacing is important. There is a blank line between the end of the MIME content headers and the beginning of the MIME part content itself. Also, there is a blank line between the end of the MIME part content and the beginning of the next MIME part boundary.
3. "MIME-Version: 1.0" must appear as the first line of the MIME message header.
4. The parameters on the "Content-Type: " line in each MIME part are required and must be in the order as shown below.
5. The sample below uses "MIME94xBoundary" as the value for the MIME boundary but an actual transmission file can have any transmitter-defined string as the boundary. The same applies to the Content-Location MIME content header.
6. The **Content-Location:** line must match one of the contentLocation attributes referenced in the OriginManifest of a ReturnOriginHeader, and the corresponding element ContentLocation in the ReturnData.

```
MIME-Version: 1.0
Content-Type: Multipart/Related; boundary=MIME94xBoundary; type=text/xml;
Content-Description: This is a sample 94x transmission file with most of the XML data generated by XML Spy.
```

```
--MIME94xBoundary
Content-Type: text/xml; charset=UTF-8
Content-Transfer-Encoding: 8bit
Content-Location: Envelope94x
```

Transmission Envelope

```
--MIME94xBoundary
Content-Type: text/xml; charset=UTF-8
Content-Transfer-Encoding: 8bit
Content-Location: 999999RetData20020617T093047
```

First ReturnData

```
--MIME94xBoundary
Content-Type: text/xml; charset=UTF-8
Content-Transfer-Encoding: 8bit
Content-Location: 999999RetData20020617T093101
```

Second ReturnData

```
--MIME94xBoundary
Content-Type: text/xml; charset=UTF-8
Content-Transfer-Encoding: 8bit
Content-Location: MyUniqueOrigID001
```

Third ReturnData

A Preliminary Guide to Creating 94x Return Transmission Files

```
--MIME94xBoundary  
Content-Type: text/xml; charset=UTF-8  
Content-Transfer-Encoding: 8bit  
Content-Location: MyUniqueOrigID002
```

Fourth ReturnData

```
--MIME94xBoundary--
```

The complete 94x return transmission file is shown below in its entirety:

```
MIME-Version: 1.0  
Content-Type: Multipart/Related; boundary=MIME94xBoundary; type=text/xml;  
Content-Description: This is a sample 94x transmission file with most of the XML data generated by XML Spy.
```

```
--MIME94xBoundary  
Content-Type: text/xml; charset=UTF-8  
Content-Transfer-Encoding: 8bit  
Content-Location: Envelope94x
```

```
<?xml version="1.0" encoding="UTF-8"?>  
<SOAP:Envelope xmlns="http://www.irs.gov/efile"  
  xmlns:xsi="http://www.w3.org/2001/XMLSchema-instance"  
  xmlns:SOAP="http://schemas.xmlsoap.org/soap/envelope/"  
  xmlns:efile="http://www.irs.gov/efile"  
  xsi:schemaLocation="http://schemas.xmlsoap.org/soap/envelope/ ../message/SOAP.xsd  
  http://www.irs.gov/efile ../message/efileMessage.xsd">  
  <SOAP:Header>  
    <efile:TransmissionHeader>  
      <TransmissionId>MyUniqueTransID001</TransmissionId>  
      <Timestamp>2001-12-17T09:30:47-05:00</Timestamp>  
      <Transmitter>  
        <ETIN>00200</ETIN>  
      </Transmitter>  
      <ProcessType>T</ProcessType>  
      <TransmissionManifest originHeaderCount="2">  
        <OriginHeaderReference originId="MyUniqueOrigID001"/>  
        <OriginHeaderReference originId="MyUniqueOrigID002"/>  
      </TransmissionManifest>  
    </efile:TransmissionHeader>  
  </SOAP:Header>  
  <SOAP:Body>  
    <efile:OriginHeaders>  
      <ReturnOriginHeader>  
        <OriginId>MyUniqueOrigID001</OriginId>  
        <Timestamp>2001-12-17T09:30:47-05:00</Timestamp>  
        <OriginManifest itemCount="2">  
          <ItemReference contentLocation="MyUnique001ReturnId"/>  
          <ItemReference contentLocation="MyUnique002ReturnId"/>  
        </OriginManifest>  
        <Originator>  
          <EFIN>510000</EFIN>  
          <Type>ReportingAgent</Type>  
        </Originator>  
        <ReportingAgentSignature>  
          <PIN>00000</PIN>  
          <ETIN>00000</ETIN>  
        </ReportingAgentSignature>
```

A Preliminary Guide to Creating 94x Return Transmission Files

```
<ISPNumber>AAAAAA</ISPNumber>
</ReturnOriginHeader>
<ReturnOriginHeader>
  <OriginId>MyUniqueOrigID002</OriginId>
  <Timestamp>2001-12-17T09:30:47-05:00</Timestamp>
  <OriginManifest itemCount="2">
    <ItemReference contentLocation="999999RetData20020617T093047"/>
    <ItemReference contentLocation="999999RetData20020617T093101"/>
  </OriginManifest>
  <Originator>
    <EFIN>999999</EFIN>
    <Type>ERO</Type>
  </Originator>
  <ISPNumber>AAAAAA</ISPNumber>
</ReturnOriginHeader>
</efile:OriginHeaders>
</SOAP:Body>
</SOAP:Envelope>
```

--MIME94xBoundary

Content-Type: text/xml; charset=UTF-8

Content-Transfer-Encoding: 8bit

Content-Location: 999999RetData20020617T093047

```
<?xml version="1.0" encoding="UTF-8"?>
<ReturnData xmlns="http://www.irs.gov/efile"
xmlns:xsi="http://www.w3.org/2001/XMLSchema-instance"
xsi:schemaLocation="http://www.irs.gov/efile
..\efile94x\94x\ReturnData940.xsd" documentCount="5">
```

```
<ContentLocation>999999RetData20020617T093047</ContentLocation>
<ReturnHeader94x documentId="1RetDID">
  <ElectronicPostmark>2001-12-17T09:30:47-05:00</ElectronicPostmark>
  <TaxPeriodEndDate>1967-08-13</TaxPeriodEndDate>
  <DisasterRelief>! !</DisasterRelief>
  <ISPNumber>AAAAAA</ISPNumber>
  <PreparerFirm>
    <EIN>010000000</EIN>
    <BusinessName1>A A</BusinessName1>
    <BusinessName2>A A</BusinessName2>
    <Address1>A A</Address1>
    <Address2>A A</Address2>
    <City>A A</City>
    <State>AL</State>
    <ZIPCode>000000000</ZIPCode>
  </PreparerFirm>
  <SoftwareId>00000000</SoftwareId>
  <ReturnType>940</ReturnType>
  <Business>
    <EIN>010000000</EIN>
    <BusinessName1>A A</BusinessName1>
    <BusinessName2>A A</BusinessName2>
    <BusinessNameControl>A</BusinessNameControl>
    <Address1>A A</Address1>
    <Address2>A A</Address2>
    <City>A A</City>
    <State>AL</State>
    <ZIPCode>000000000</ZIPCode>
    <AddressChange>X</AddressChange>
  </Business>
  <Preparer>
    <Name>A A</Name>
```

A Preliminary Guide to Creating 94x Return Transmission Files

```
<SSN>000000000</SSN>
<Phone>2222222222</Phone>
<EmailAddress>A@0.0.0.0</EmailAddress>
<SelfEmployed>X</SelfEmployed>
</Preparer>
<ReturnSigner>
  <Name>A A</Name>
  <Title>! !</Title>
  <Phone>1122255111</Phone>
  <EmailAddress>A@0.0.0.0</EmailAddress>
  <Signature>0000000000</Signature>
  <DateSigned>1967-08-13</DateSigned>
</ReturnSigner>
<ThirdPartyAuthorization>
  <AuthorizeThirdParty>X</AuthorizeThirdParty>
  <DesigneeName>A A</DesigneeName>
  <DesigneePhone>0000000000</DesigneePhone>
  <DPIN>AAAAAAAA</DPIN>
</ThirdPartyAuthorization>
</ReturnHeader94x>
<IRS940 documentId="2RetDID">
  <QuestionA>true</QuestionA>
  <QuestionB>true</QuestionB>
  <QuestionC>false</QuestionC>
  <FinalReturn>X</FinalReturn>
  <AmendedReturn>X</AmendedReturn>
  <TotalWages>0.00</TotalWages>
  <ExemptWages>0.00</ExemptWages>
  <WagesOverLimit>0.00</WagesOverLimit>
  <TotalExemptWages>0.00</TotalExemptWages>
  <TotalTaxableWages>0.00</TotalTaxableWages>
  <GrossFUTATax>0.00</GrossFUTATax>
  <MaximumCredit>0.00</MaximumCredit>
  <StateContribution>
    <StateCode>AL</StateCode>
    <StateReportingNumber>!</StateReportingNumber>
    <TaxablePayroll>0.00</TaxablePayroll>
    <RatePeriodFrom>1967-08-13</RatePeriodFrom>
    <RatePeriodTo>1967-08-13</RatePeriodTo>
    <ExperienceRate>0.000000</ExperienceRate>
    <ContributionsAtRate>0.00</ContributionsAtRate>
    <ContributionsAtExperienceRate>0.00</ContributionsAtExperienceRate>
    <AdditionalCredit>0.00</AdditionalCredit>
    <TimelyContributions>0.00</TimelyContributions>
  </StateContribution>
  <StateContribution>
    <StateCode>AL</StateCode>
    <StateReportingNumber>!</StateReportingNumber>
    <TaxablePayroll>0.00</TaxablePayroll>
    <RatePeriodFrom>1967-08-13</RatePeriodFrom>
    <RatePeriodTo>1967-08-13</RatePeriodTo>
    <ExperienceRate>0.000000</ExperienceRate>
    <ContributionsAtRate>0.00</ContributionsAtRate>
    <ContributionsAtExperienceRate>0.00</ContributionsAtExperienceRate>
    <AdditionalCredit>0.00</AdditionalCredit>
    <TimelyContributions>0.00</TimelyContributions>
  </StateContribution>
  <TotalAdditionalCredit>0.00</TotalAdditionalCredit>
  <TotalTimelyContributions>0.00</TotalTimelyContributions>
  <TotalTentativeCredit>0.00</TotalTentativeCredit>
  <Credit>0.00</Credit>
```

A Preliminary Guide to Creating 94x Return Transmission Files

```
<TotalTax>0.00</TotalTax>
<TotalTaxDeposited>0.00</TotalTaxDeposited>
<BalanceDue>0.00</BalanceDue>
<Quarter1Liability>0.00</Quarter1Liability>
<Quarter2Liability>0.00</Quarter2Liability>
<Quarter3Liability>0.00</Quarter3Liability>
<Quarter4Liability>0.00</Quarter4Liability>
<TotalYearLiability>0.00</TotalYearLiability>
</IRS940>
<AmendedReturnExplanation documentId="3RetDID">
  <Explanation>! !</Explanation>
</AmendedReturnExplanation>
<ExemptWages documentId="4RetDID">
  <ExemptWage>
    <ExemptCode>01</ExemptCode>
    <ExemptAmount>0.00</ExemptAmount>
  </ExemptWage>
  <ExemptWage>
    <ExemptCode>01</ExemptCode>
    <ExemptAmount>0.00</ExemptAmount>
  </ExemptWage>
</ExemptWages>
<IRS94xPayment documentId="5RetDID">
  <RoutingTransitNumber>010000000</RoutingTransitNumber>
  <BankAccountNumber>A A</BankAccountNumber>
  <AccountType>1</AccountType>
  <PaymentAmount>3.14</PaymentAmount>
  <TaxpayerDaytimePhone>1454554845</TaxpayerDaytimePhone>
</IRS94xPayment>
</ReturnData>
```

--MIME94xBoundary

Content-Type: text/xml; charset=UTF-8

Content-Transfer-Encoding: 8bit

Content-Location: 999999RetData20020617T093101

```
<?xml version="1.0" encoding="UTF-8"?>
<ReturnData xmlns="http://www.irs.gov/efile"
xmlns:xsi="http://www.w3.org/2001/XMLSchema-instance"
xsi:schemaLocation="http://www.irs.gov/efile
..\94x\ReturnData941.xsd" documentCount="10">
```

```
<ContentLocation>999999RetData20020617T093101</ContentLocation>
<ReturnHeader94x documentId="1RetDID">
  <ElectronicPostmark>2001-12-17T09:30:47-05:00</ElectronicPostmark>
  <TaxPeriodEndDate>1967-08-13</TaxPeriodEndDate>
  <DisasterRelief>! !</DisasterRelief>
  <ISPNumber>AAAAAA</ISPNumber>
  <PreparerFirm>
    <EIN>010000009</EIN>
    <BusinessName1>A A</BusinessName1>
    <BusinessName2>A A</BusinessName2>
    <Address1>A A</Address1>
    <Address2>A A</Address2>
    <City>A A</City>
    <State>AL</State>
    <ZIPCode>000000000</ZIPCode>
  </PreparerFirm>
  <SoftwareId>000000000</SoftwareId>
  <ReturnTypes>941</ReturnTypes>
  <Business>
    <EIN>010000000</EIN>
```

A Preliminary Guide to Creating 94x Return Transmission Files

```
<BusinessName1>A A</BusinessName1>
<BusinessName2>A A</BusinessName2>
<BusinessNameControl>A</BusinessNameControl>
<Address1>A A</Address1>
<Address2>A A</Address2>
<City>A A</City>
<State>AL</State>
<ZIPCode>000000000</ZIPCode>
<AddressChange>X</AddressChange>
</Business>
<Preparer>
  <Name>A A</Name>
  <SSN>000000000</SSN>
  <Phone>5666446645</Phone>
  <EmailAddress>A@0.0.0.0</EmailAddress>
  <SelfEmployed>X</SelfEmployed>
</Preparer>
<ReturnSigner>
  <Name>A A</Name>
  <Title>! !</Title>
  <Phone>5699666660</Phone>
  <EmailAddress>A@0.0.0.0</EmailAddress>
  <Signature>0000000000</Signature>
  <DateSigned>1967-08-13</DateSigned>
</ReturnSigner>
<ThirdPartyAuthorization>
  <AuthorizeThirdParty>X</AuthorizeThirdParty>
  <DesigneeName>A A</DesigneeName>
  <DesigneePhone>4589599628</DesigneePhone>
  <DPIN>AAAAAAAAA</DPIN>
</ThirdPartyAuthorization>
</ReturnHeader94x>
<IRS941 documentId="2RetDID">
  <DepositStateCode>AL</DepositStateCode>
  <FinalReturn>X</FinalReturn>
  <AmendedReturn>X</AmendedReturn>
  <DateFinalWagesPaid>1967-08-13</DateFinalWagesPaid>
  <SeasonalEmployer>X</SeasonalEmployer>
  <NumberOfEmployees>1</NumberOfEmployees>
  <TotalWages>0.00</TotalWages>
  <TotalIncomeTaxWithheld>0.00</TotalIncomeTaxWithheld>
  <WithheldIncomeTaxAdjustment>+99999999.9</WithheldIncomeTaxAdjustment>
  <AdjustedTotalIncomeTaxWithheld>-
99999999.99</AdjustedTotalIncomeTaxWithheld>
  <TaxableSocialSecurityWages>0.00</TaxableSocialSecurityWages>
  <TaxOnSocialSecurityWages>0.00</TaxOnSocialSecurityWages>
  <TaxableSocialSecurityTips>0.00</TaxableSocialSecurityTips>
  <TaxOnSocialSecurityTips>0.00</TaxOnSocialSecurityTips>
  <TaxableMedicareWagesTips>0.00</TaxableMedicareWagesTips>
  <TaxOnMedicareWagesTips>0.00</TaxOnMedicareWagesTips>
  <WagesNotSubjToSSMedicareTaxes>X</WagesNotSubjToSSMedicareTaxes>
  <TotalSocialSecurityMedTaxes>0.00</TotalSocialSecurityMedTaxes>
  <SickPayAdjustment>3.14</SickPayAdjustment>
  <FractionsOfCentsAdjustment>3.14</FractionsOfCentsAdjustment>
  <OtherAdjustment>3.14</OtherAdjustment>
  <TotalAdjustmentSSMedicareTaxes>3.14</TotalAdjustmentSSMedicareTaxes>
  <AdjustedTotalSSMedicareTaxes>0.00</AdjustedTotalSSMedicareTaxes>
  <TotalTax>0.00</TotalTax>
  <AdvanceEarnedIncomeCreditPymts>0.00</AdvanceEarnedIncomeCreditPymts>
  <NetTaxes>0.00</NetTaxes>
  <TotalDepositsOverpaymentForQtr>0.00</TotalDepositsOverpaymentForQtr>
```


A Preliminary Guide to Creating 94x Return Transmission Files

```
<BalanceDue>0.00</BalanceDue>
<SemiweeklyScheduleDepositor>X</SemiweeklyScheduleDepositor>
<Month1Liability>0.00</Month1Liability>
<Month2Liability>0.00</Month2Liability>
<Month3Liability>0.00</Month3Liability>
<TotalQuarterLiability>0.00</TotalQuarterLiability>
</IRS941>
<AmendedReturnExplanation documentId="3RetDID">
  <Explanation>! !</Explanation>
</AmendedReturnExplanation>
<WgNotSubjToSSMedTaxExplanation documentId="4RetDID">
  <Explanation>! !</Explanation>
</WgNotSubjToSSMedTaxExplanation>
<SickPayAdjustmentExplanation documentId="5RetDID">
  <Explanation>! !</Explanation>
</SickPayAdjustmentExplanation>
<FractionsOfCentsAdjExplanation documentId="6RetDID">
  <Explanation>! !</Explanation>
</FractionsOfCentsAdjExplanation>
<OtherAdjustmentExplanation documentId="7RetDID">
  <Explanation>! !</Explanation>
</OtherAdjustmentExplanation>
<IRS941ScheduleB documentId="8RetDID">
  <Month1Liabilities>
    <LiabilityAmount liabilityDay="31">0.00</LiabilityAmount>
    <LiabilityAmount liabilityDay="31">0.00</LiabilityAmount>
  </Month1Liabilities>
  <TotalMonth1Liability>0.00</TotalMonth1Liability>
  <Month2Liabilities>
    <LiabilityAmount liabilityDay="31">0.00</LiabilityAmount>
    <LiabilityAmount liabilityDay="31">0.00</LiabilityAmount>
  </Month2Liabilities>
  <TotalMonth2Liability>0.00</TotalMonth2Liability>
  <Month3Liabilities>
    <LiabilityAmount liabilityDay="31">0.00</LiabilityAmount>
    <LiabilityAmount liabilityDay="31">0.00</LiabilityAmount>
  </Month3Liabilities>
  <TotalMonth3Liability>0.00</TotalMonth3Liability>
  <TotalQuarterLiability>0.00</TotalQuarterLiability>
</IRS941ScheduleB>
<IRS941c documentId="9RetDID">
  <DateErrorDiscovered>1967-08-13</DateErrorDiscovered>
  <Certification1>X</Certification1>
  <Certification2>X</Certification2>
  <Certification3>X</Certification3>
  <Certification4>X</Certification4>
  <IncomeTaxWithholdingAdjustment>
    <PeriodCorrectedEndDate>1000-03-31</PeriodCorrectedEndDate>
    <WithheldTaxPreviouslyReported>0.00</WithheldTaxPreviouslyReported>
    <CorrectWithheldTax>0.00</CorrectWithheldTax>
    <WithheldTaxAdjustmentForPeriod>0.00</WithheldTaxAdjustmentForPeriod>
  </IncomeTaxWithholdingAdjustment>
  <IncomeTaxWithholdingAdjustment>
    <PeriodCorrectedEndDate>1000-03-31</PeriodCorrectedEndDate>
    <WithheldTaxPreviouslyReported>0.00</WithheldTaxPreviouslyReported>
    <CorrectWithheldTax>0.00</CorrectWithheldTax>
    <WithheldTaxAdjustmentForPeriod>0.00</WithheldTaxAdjustmentForPeriod>
  </IncomeTaxWithholdingAdjustment>
  <NetWithheldIncomeTaxAdjustment>3.14</NetWithheldIncomeTaxAdjustment>
  <SocialSecurityTaxAdjustment>
    <PeriodCorrectedEndDate>1000-03-31</PeriodCorrectedEndDate>
```

A Preliminary Guide to Creating 94x Return Transmission Files

```
<SocialSecurityWagesPrevRpt>0.00</SocialSecurityWagesPrevRpt>
<CorrectSocialSecurityWages>0.00</CorrectSocialSecurityWages>
<SocialSecurityTipsPrevRpt>0.00</SocialSecurityTipsPrevRpt>
<CorrectSocialSecurityTips>0.00</CorrectSocialSecurityTips>
<SocialSecurityTaxAdjForPeriod>3.14</SocialSecurityTaxAdjForPeriod>
</SocialSecurityTaxAdjustment>
<SocialSecurityTaxAdjustment>
  <PeriodCorrectedEndDate>1000-03-31</PeriodCorrectedEndDate>
  <SocialSecurityWagesPrevRpt>0.00</SocialSecurityWagesPrevRpt>
  <CorrectSocialSecurityWages>0.00</CorrectSocialSecurityWages>
  <SocialSecurityTipsPrevRpt>0.00</SocialSecurityTipsPrevRpt>
  <CorrectSocialSecurityTips>0.00</CorrectSocialSecurityTips>
  <SocialSecurityTaxAdjForPeriod>3.14</SocialSecurityTaxAdjForPeriod>
</SocialSecurityTaxAdjustment>
<TotalSocialSecurityWgsPrevRpt>0.00</TotalSocialSecurityWgsPrevRpt>
<TotalCorrectSocialSecurityWgs>0.00</TotalCorrectSocialSecurityWgs>
<TotalSocialSecurityTipsPrevRpt>0.00</TotalSocialSecurityTipsPrevRpt>
<TotalCorrectSocialSecurityTips>0.00</TotalCorrectSocialSecurityTips>
<NetSocialSecurityTaxAdjustment>3.14</NetSocialSecurityTaxAdjustment>
<NetSocialSecurityWageAdj>3.14</NetSocialSecurityWageAdj>
<NetSocialSecurityTipAdjustment>3.14</NetSocialSecurityTipAdjustment>
<MedicareTaxAdjustment>
  <PeriodCorrectedEndDate>1000-03-31</PeriodCorrectedEndDate>
  <MedicareWagesTipsPreviouslyRpt>0.00</MedicareWagesTipsPreviouslyRpt>
  <CorrectMedicareWagesTips>0.00</CorrectMedicareWagesTips>
  <MedicareTaxAdjustmentForPeriod>3.14</MedicareTaxAdjustmentForPeriod>
</MedicareTaxAdjustment>
<MedicareTaxAdjustment>
  <PeriodCorrectedEndDate>1000-03-31</PeriodCorrectedEndDate>
  <MedicareWagesTipsPreviouslyRpt>0.00</MedicareWagesTipsPreviouslyRpt>
  <CorrectMedicareWagesTips>0.00</CorrectMedicareWagesTips>
  <MedicareTaxAdjustmentForPeriod>3.14</MedicareTaxAdjustmentForPeriod>
</MedicareTaxAdjustment>
<TotalMedicareWagesTipsPrevRpt>0.00</TotalMedicareWagesTipsPrevRpt>
<TotalCorrectMedicareWagesTips>0.00</TotalCorrectMedicareWagesTips>
<NetMedicareTaxAdjustment>3.14</NetMedicareTaxAdjustment>
<NetMedicareWageTipAdjustment>3.14</NetMedicareWageTipAdjustment>
<AdjustmentsExplanation>! !</AdjustmentsExplanation>
</IRS941c>
<IRS94xPayment documentId="10RetDID">
  <RoutingTransitNumber>010000000</RoutingTransitNumber>
  <BankAccountNumber>A A</BankAccountNumber>
  <AccountType>1</AccountType>
  <PaymentAmount>3.14</PaymentAmount>
  <TaxpayerDaytimePhone>5548669620</TaxpayerDaytimePhone>
</IRS94xPayment>
</ReturnData>
--MIME94xBoundary
Content-Type: text/xml; charset=UTF-8
Content-Transfer-Encoding: 8bit
Content-Location: MyUnique001ReturnId
<?xml version="1.0" encoding="UTF-8"?>
<ReturnData xmlns="http://www.irs.gov/efile"
xmlns:xsi="http://www.w3.org/2001/XMLSchema-instance"
xsi:schemaLocation="http://www.irs.gov/efile
..\efile94x\94x\ReturnData941.xsd" documentCount="2">
  <ContentLocation>MyUnique001ReturnId</ContentLocation>
  <ReturnHeader94x documentId="1UniqDocIdRet">
    <TaxPeriodEndDate>1967-08-13</TaxPeriodEndDate>
```

A Preliminary Guide to Creating 94x Return Transmission Files

```
<ReturnType>941</ReturnType>
<Business>
  <EIN>010000000</EIN>
  <BusinessName1>A A</BusinessName1>
  <BusinessNameControl>A</BusinessNameControl>
  <Address1>A A</Address1>
  <City>A A</City>
  <State>AL</State>
  <ZIPCode>000000000</ZIPCode>
</Business>
</ReturnHeader94x>
<IRS941 documentId="2UniqDocIdRet">
  <AdjustedTotalSSMedicareTaxes>0.00</AdjustedTotalSSMedicareTaxes>
  <TotalTax>0.00</TotalTax>
  <NetTaxes>0.00</NetTaxes>
  <TotalDepositsOverpaymentForQtr>0.00</TotalDepositsOverpaymentForQtr>
</IRS941>
</ReturnData>
```

--MIME94xBoundary

Content-Type: text/xml; charset=UTF-8

Content-Transfer-Encoding: 8bit

Content-Location: MyUnique002ReturnId

```
<?xml version="1.0" encoding="UTF-8"?>
<ReturnData xmlns="http://www.irs.gov/efile"
xmlns:xsi="http://www.w3.org/2001/XMLSchema-instance"
xsi:schemaLocation="http://www.irs.gov/efile
..\94x\ReturnData940.xsd" documentCount="2">

  <ContentLocation>MyUnique002ReturnId</ContentLocation>
  <ReturnHeader94x documentId="1UniqDocIdRet">
    <TaxPeriodEndDate>1967-08-13</TaxPeriodEndDate>
    <ReturnType>940</ReturnType>
    <Business>
      <EIN>010000000</EIN>
      <BusinessName1>A A</BusinessName1>
      <BusinessNameControl>A</BusinessNameControl>
      <Address1>A A</Address1>
      <City>A A</City>
      <State>AL</State>
      <ZIPCode>000000000</ZIPCode>
    </Business>
  </ReturnHeader94x>
  <IRS940 documentId="2UniqDocIdRet">
    <QuestionA>1</QuestionA>
    <QuestionB>1</QuestionB>
    <QuestionC>1</QuestionC>
    <TotalTaxableWages>0.00</TotalTaxableWages>
    <StateContribution>
      <StateCode>AL</StateCode>
      <StateReportingNumber>!</StateReportingNumber>
      <TaxablePayroll>0.00</TaxablePayroll>
      <RatePeriodFrom>1967-08-13</RatePeriodFrom>
      <RatePeriodTo>1967-08-13</RatePeriodTo>
      <ExperienceRate>0.000000</ExperienceRate>
      <ContributionsAtRate>0.00</ContributionsAtRate>
      <ContributionsAtExperienceRate>0.00</ContributionsAtExperienceRate>
      <AdditionalCredit>0.00</AdditionalCredit>
      <TimelyContributions>0.00</TimelyContributions>
    </StateContribution>
```

A Preliminary Guide to Creating 94x Return Transmission Files

```
<StateContribution>
  <StateCode>AL</StateCode>
  <StateReportingNumber>!</StateReportingNumber>
  <TaxablePayroll>0.00</TaxablePayroll>
  <RatePeriodFrom>1967-08-13</RatePeriodFrom>
  <RatePeriodTo>1967-08-13</RatePeriodTo>
  <ExperienceRate>0.000000</ExperienceRate>
  <ContributionsAtRate>0.00</ContributionsAtRate>
  <ContributionsAtExperienceRate>0.00</ContributionsAtExperienceRate>
  <AdditionalCredit>0.00</AdditionalCredit>
  <TimelyContributions>0.00</TimelyContributions>
</StateContribution>
<StateContribution>
  <StateCode>AL</StateCode>
  <StateReportingNumber>!</StateReportingNumber>
  <TaxablePayroll>0.00</TaxablePayroll>
  <RatePeriodFrom>1967-08-13</RatePeriodFrom>
  <RatePeriodTo>1967-08-13</RatePeriodTo>
  <ExperienceRate>0.000000</ExperienceRate>
  <ContributionsAtRate>0.00</ContributionsAtRate>
  <ContributionsAtExperienceRate>0.00</ContributionsAtExperienceRate>
  <AdditionalCredit>0.00</AdditionalCredit>
  <TimelyContributions>0.00</TimelyContributions>
</StateContribution>
<StateContribution>
  <StateCode>AL</StateCode>
  <StateReportingNumber>!</StateReportingNumber>
  <TaxablePayroll>0.00</TaxablePayroll>
  <RatePeriodFrom>1967-08-13</RatePeriodFrom>
  <RatePeriodTo>1967-08-13</RatePeriodTo>
  <ExperienceRate>0.000000</ExperienceRate>
  <ContributionsAtRate>0.00</ContributionsAtRate>
  <ContributionsAtExperienceRate>0.00</ContributionsAtExperienceRate>
  <AdditionalCredit>0.00</AdditionalCredit>
  <TimelyContributions>0.00</TimelyContributions>
</StateContribution>
<StateContribution>
  <StateCode>AL</StateCode>
  <StateReportingNumber>!</StateReportingNumber>
  <TaxablePayroll>0.00</TaxablePayroll>
  <RatePeriodFrom>1967-08-13</RatePeriodFrom>
  <RatePeriodTo>1967-08-13</RatePeriodTo>
  <ExperienceRate>0.000000</ExperienceRate>
  <ContributionsAtRate>0.00</ContributionsAtRate>
  <ContributionsAtExperienceRate>0.00</ContributionsAtExperienceRate>
  <AdditionalCredit>0.00</AdditionalCredit>
  <TimelyContributions>0.00</TimelyContributions>
</StateContribution>
<Credit>0.00</Credit>
<TotalTax>0.00</TotalTax>
</IRS940>
</ReturnData>
--MIME94xBoundary--
```