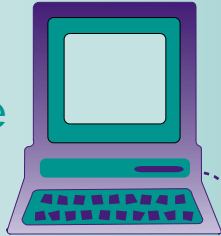


## Electronic Tax Administration

### Electronic Commerce for Businesses



The Internal Revenue Service offers alternatives to file and pay business taxes.

### Electronic Data Interchange (EDI)

The 941ELF program lets you file your "Employer's Quarterly Federal Tax Return" in EDI format. EDI is a computer-to-computer exchange of data. You can develop your own software or buy it off the shelf, where available. Call (901) 546-2690 (ext 7519) for info.

### Magnetic Tape, Disk or BBS

You can file your business tax returns via mag tape, floppy disk or bulletin board system (BBS). Forms that can be filed this way include 940, 941, 1041, 1065 and the 5500 series. Call your IRS service center magnetic tape coordinator for information.

An application and testing process is required for each filing program.



### Electronic Payments

You can now make your federal tax deposits electronically. Enroll in the Electronic Federal Tax Payment System (EFTPS). Call 1-800-555-4477 or 1-800-945-8400 for more info.

<http://www.irs.ustreas.gov>  
Department of the Treasury  
**Internal Revenue Service**

Publication 1973 (2-97)  
Catalog Number 22896Y